



CITY OF URBANA
PUBLIC WORKS
ENGINEERING DIVISION

DRAWN BY: AJJ
CHECKED BY: GLJ

DATED: 1/09
DESIGNED BY: CES
CITY SECTION
00-00361-00-PV

WINDSOR ROAD IMPROVEMENTS
PLAN AND PROFILES
STA 89+00 TO STA 93+50

SHEET NO.
41
OF
145

CONTRACT NO. 91391

LEGEND

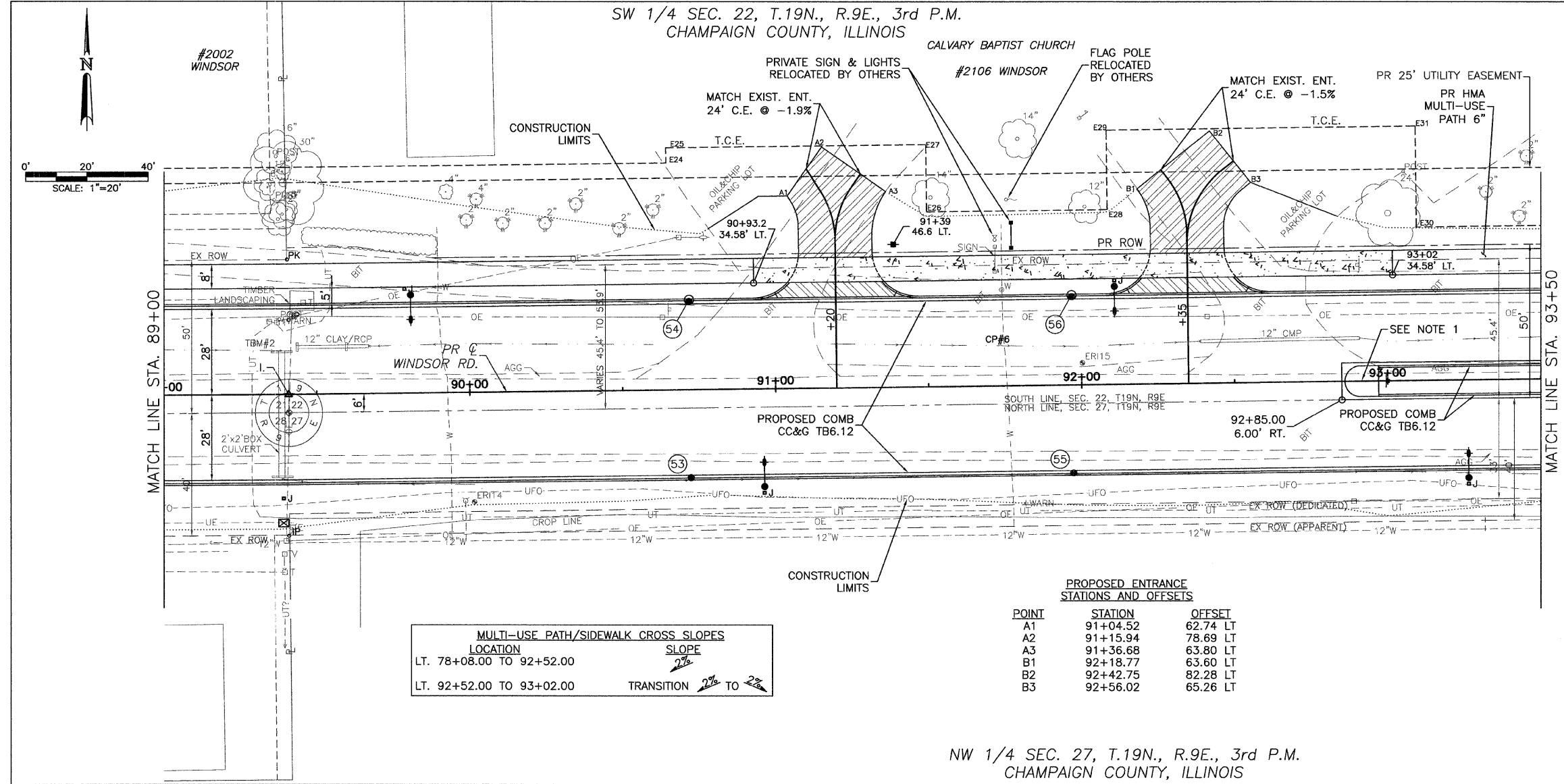
- DETECTABLE WARNINGS
- PCC SIDEWALK
- PCC DRIVEWAY PAVEMENT
- AGGREGATE SURFACE COURSE, TYPE A
- INCIDENTAL HMA SURFACE
- DRAINAGE STRUCTURE NO. (SEE DRAINAGE SHEETS)

TBM #2: STA. 89+38.70, 14.00' LT. CHISELED SQUARE ON CONCRETE HEADWALL ON N. SIDE OF WINDSOR RD. EAST OF SUSAN STONE DR. W. OF WEST MOST ENTRANCE TO CALVARY BAPTIST CHURCH ELEV.= 732.02

- NOTES:
- PROPOSED CONCRETE MEDIAN, TYPE SB-6.12 (SEE MISC. DETAILS SHEETS)

TEMPORARY CONSTRUCTION EASEMENT STATIONS AND OFFSETS

POINT	STATION	OFFSET
E24	90+65.00	74.00 LT
E25	90+65.00	79.00 LT
E26	91+50.00	57.00 LT
E27	91+50.00	79.00 LT
E28	92+09.00	57.00 LT
E29	92+09.00	83.00 LT
E30	93+10.00	50.00 LT
E31	93+10.00	83.00 LT



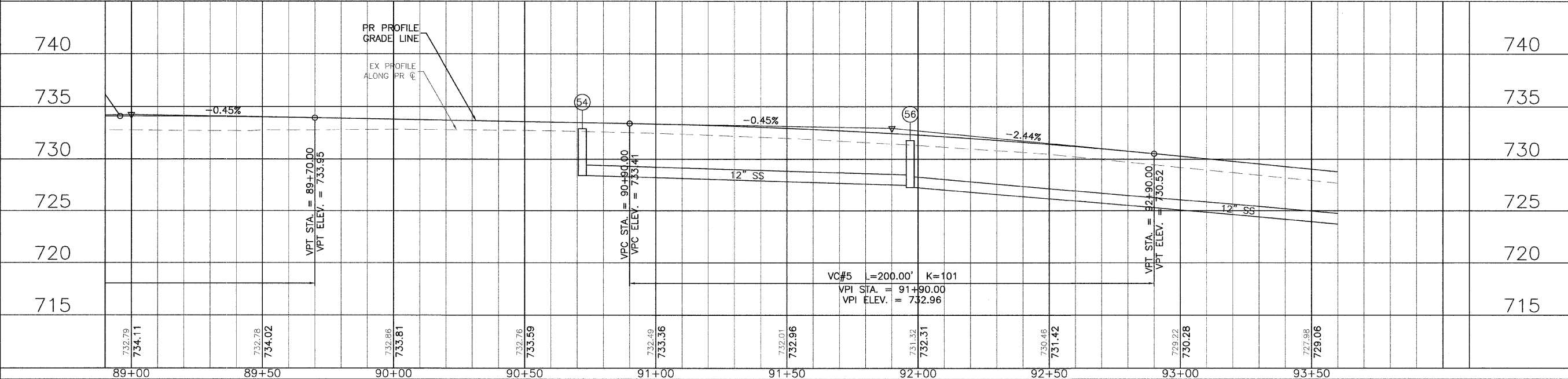
MULTI-USE PATH/SIDEWALK CROSS SLOPES

LOCATION	SLOPE
LT. 78+08.00 TO 92+52.00	2%
LT. 92+52.00 TO 93+02.00	TRANSITION 2% TO 2 1/2%

PROPOSED ENTRANCE STATIONS AND OFFSETS

POINT	STATION	OFFSET
A1	91+04.52	62.74 LT
A2	91+15.94	78.69 LT
A3	91+36.68	63.80 LT
B1	92+18.77	63.60 LT
B2	92+42.75	82.28 LT
B3	92+56.02	65.26 LT

NW 1/4 SEC. 27, T.19N., R.9E., 3rd P.M.
CHAMPAIGN COUNTY, ILLINOIS



JAN 09 2009 11:35AM PP ST489+00-93+50.DWG