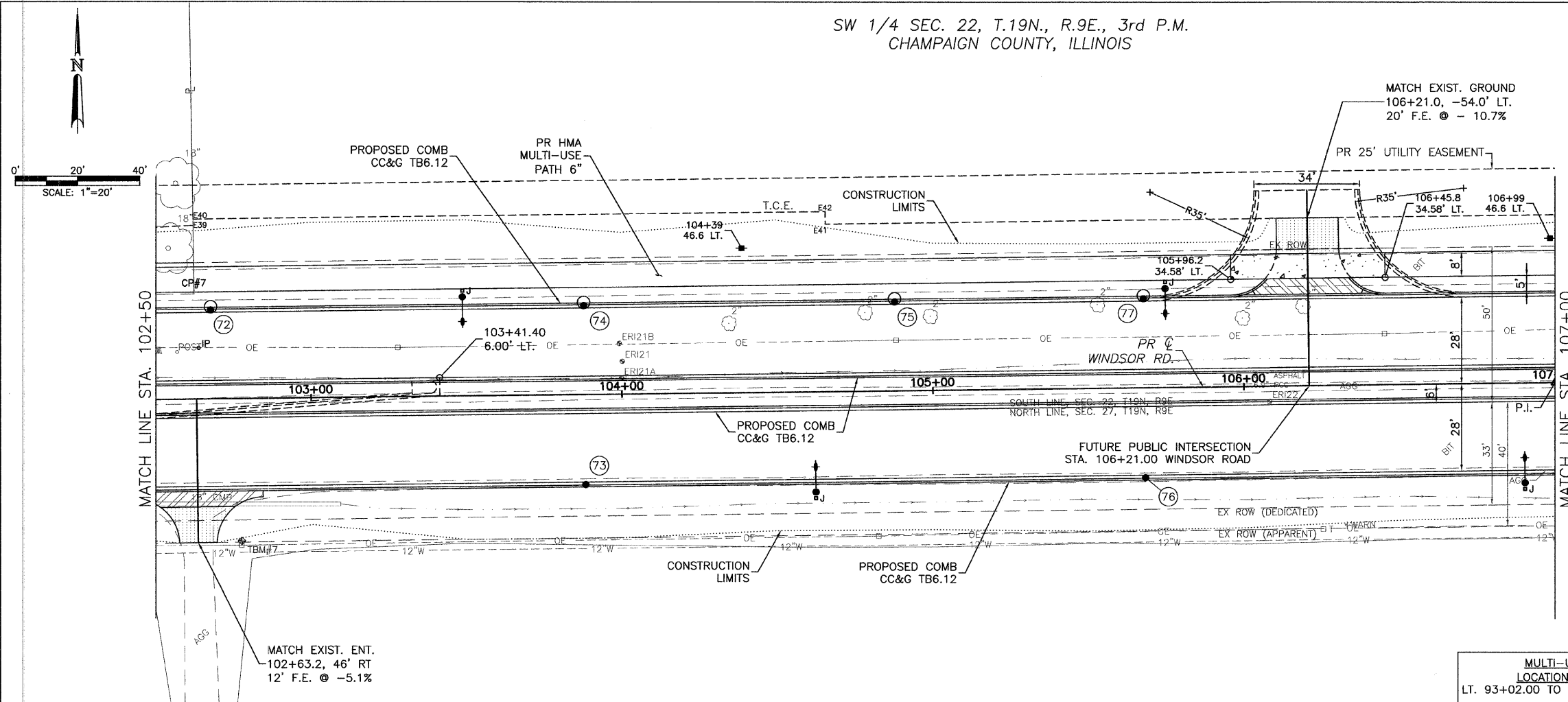


SW 1/4 SEC. 22, T.19N., R.9E., 3rd P.M.
CHAMPAIGN COUNTY, ILLINOIS

CONTRACT NO. 91391



CITY OF URBANA
PUBLIC WORKS
ENGINEERING DIVISION



- LEGEND**
- DETECTABLE WARNINGS
 - PCC SIDEWALK
 - PCC DRIVEWAY PAVEMENT
 - AGGREGATE SURFACE COURSE, TYPE A
 - INCIDENTAL HMA SURFACE
 - DRAINAGE STRUCTURE NO. (SEE DRAINAGE SHEETS)

TBM #7: STA. 102+78.20, 46.00'
RT. P.K. NAIL IN N. FACE OF
POWER POLE ON THE S. SIDE
WINDSOR RD. FIFTH POLE E. OF
SUSAN STONE DR. ELEV.=716.16

TEMPORARY CONSTRUCTION EASEMENT STATIONS AND OFFSETS

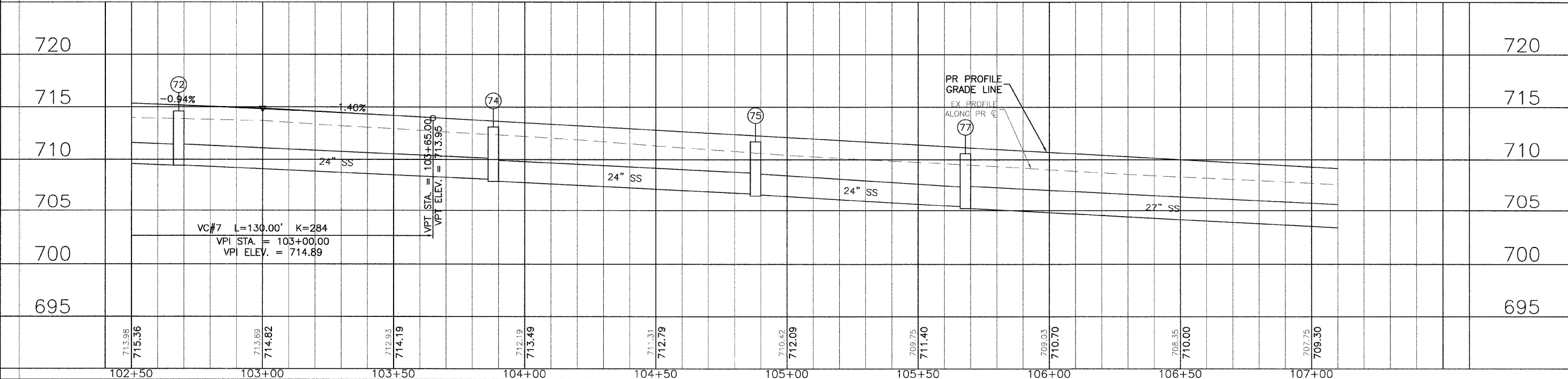
POINT	STATION	OFFSET
E39	102+62.67	56.00 LT
E40	102+62.67	58.00 LT
E41	104+66.00	54.00 LT
E42	104+66.00	58.00 LT

MULTI-USE PATH/SIDEWALK CROSS SLOPES

LOCATION	SLOPE
LT. 93+02.00 TO 105+50.00	2%
LT. 105+44.00 TO 105+96.00	TRANSITION 2% TO 2%

EX UNDERGROUND TELEPHONE NOT SHOWN
FROM STA. 94+00 TO STA. 114+00

NW 1/4 SEC. 27, T.19N., R.9E., 3rd P.M.
CHAMPAIGN COUNTY, ILLINOIS



WINDSOR ROAD IMPROVEMENTS
PLAN AND PROFILES
STA 102+50 TO STA 107+00

SHEET NO.
44
OF
145

JAN-09-2009 11:40AM PP-STA102+50-107+00.DWG