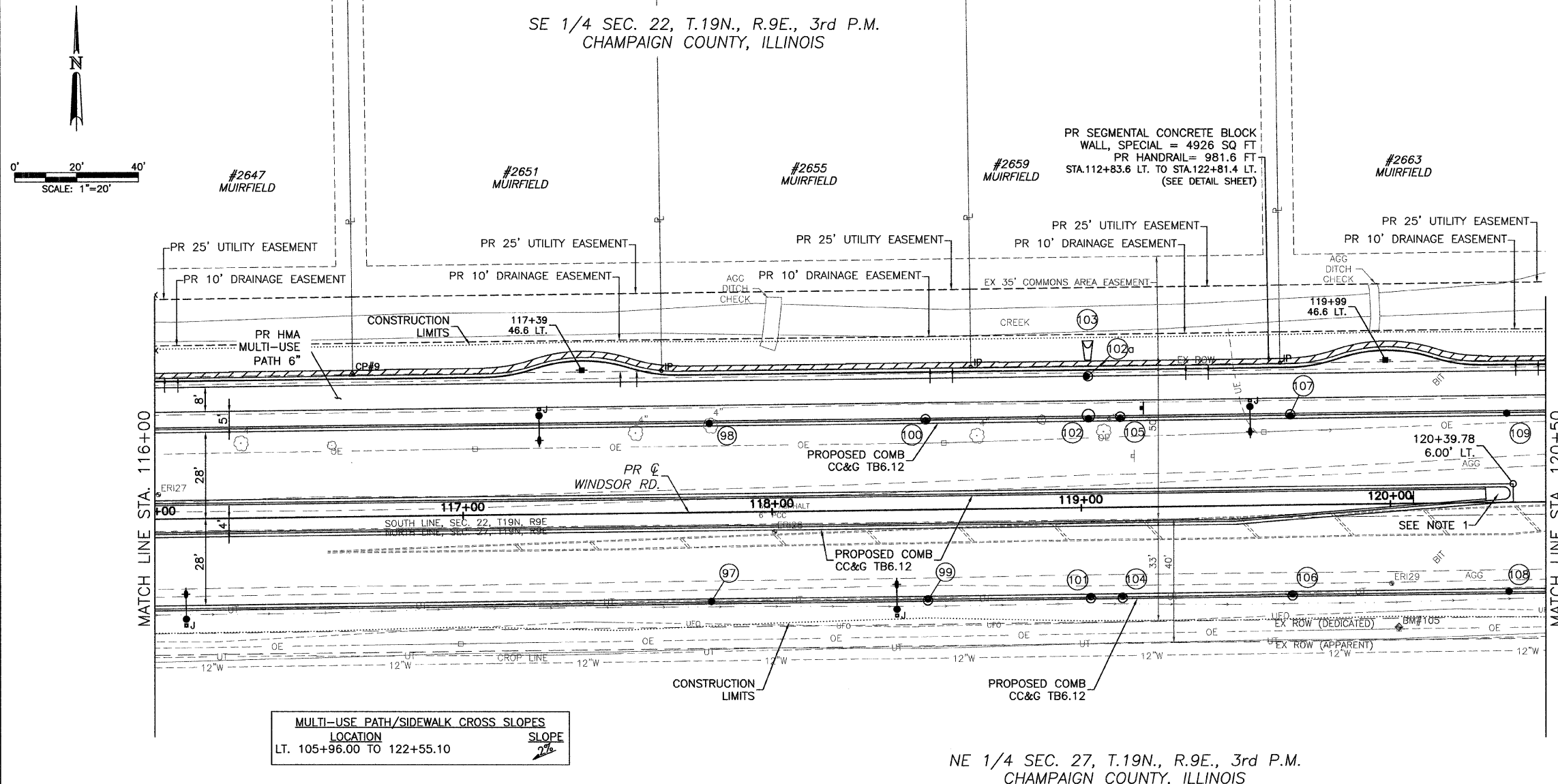




CITY OF URBANA
PUBLIC WORKS
ENGINEERING DIVISION

CONTRACT NO. 91391



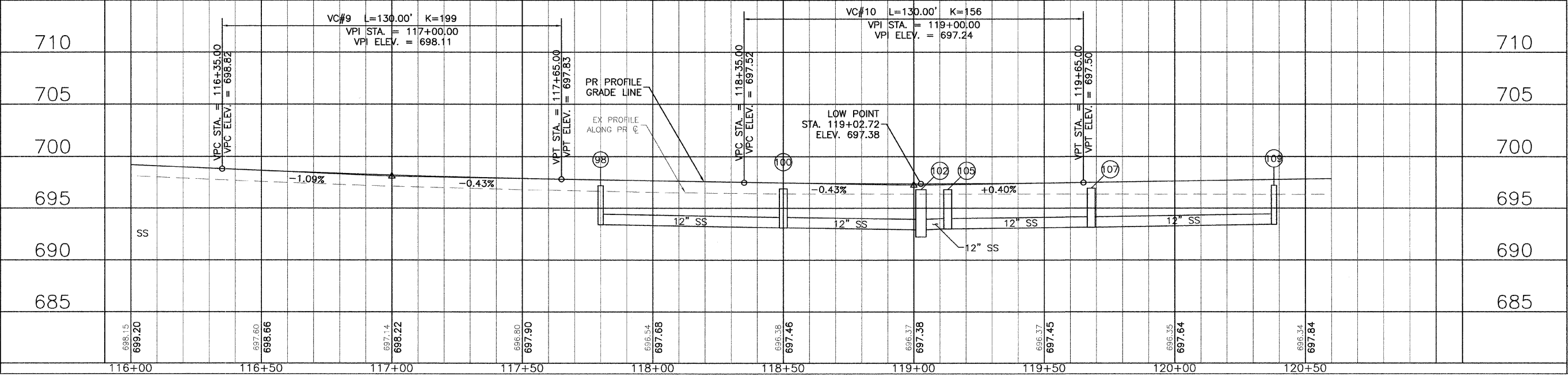
- LEGEND**
- DETECTABLE WARNINGS
 - PCC SIDEWALK
 - PCC DRIVEWAY PAVEMENT
 - AGGREGATE SURFACE COURSE, TYPE A
 - INCIDENTAL HMA SURFACE
 - DRAINAGE STRUCTURE NO. (SEE DRAINAGE SHEETS)

BM #105: STA. 120+02.80, 40.00'
RT. RR SPIKE IN N. SIDE OF POWER
POLE ON S. SIDE OF WINDSOR ROAD,
FIRST POLE W. OF STONE CREEK
BLVD. ELEV.=697.36

- NOTES:**
1. PROPOSED CONCRETE MEDIAN, TYPE SB-6.12 (SEE MISC. DETAILS SHEET)

MULTI-USE PATH/SIDEWALK CROSS SLOPES		
LOCATION	SLOPE	
LT. 105+96.00 TO 122+55.10	2.7%	

NE 1/4 SEC. 27, T.19N., R.9E., 3rd P.M.
CHAMPAIGN COUNTY, ILLINOIS



DATED: 1/09
DESIGNED BY: CES
DRAWN BY: AJS
CHECKED BY: GLJ
CITY SECTION
00-00361-00-PV

WINDSOR ROAD IMPROVEMENTS
PLAN AND PROFILES
STA 116+00 TO STA 120+50

SHEET NO.
47
OF
145

MAR 20 2009 11:04AM PP STA116+00-120+50.DWG