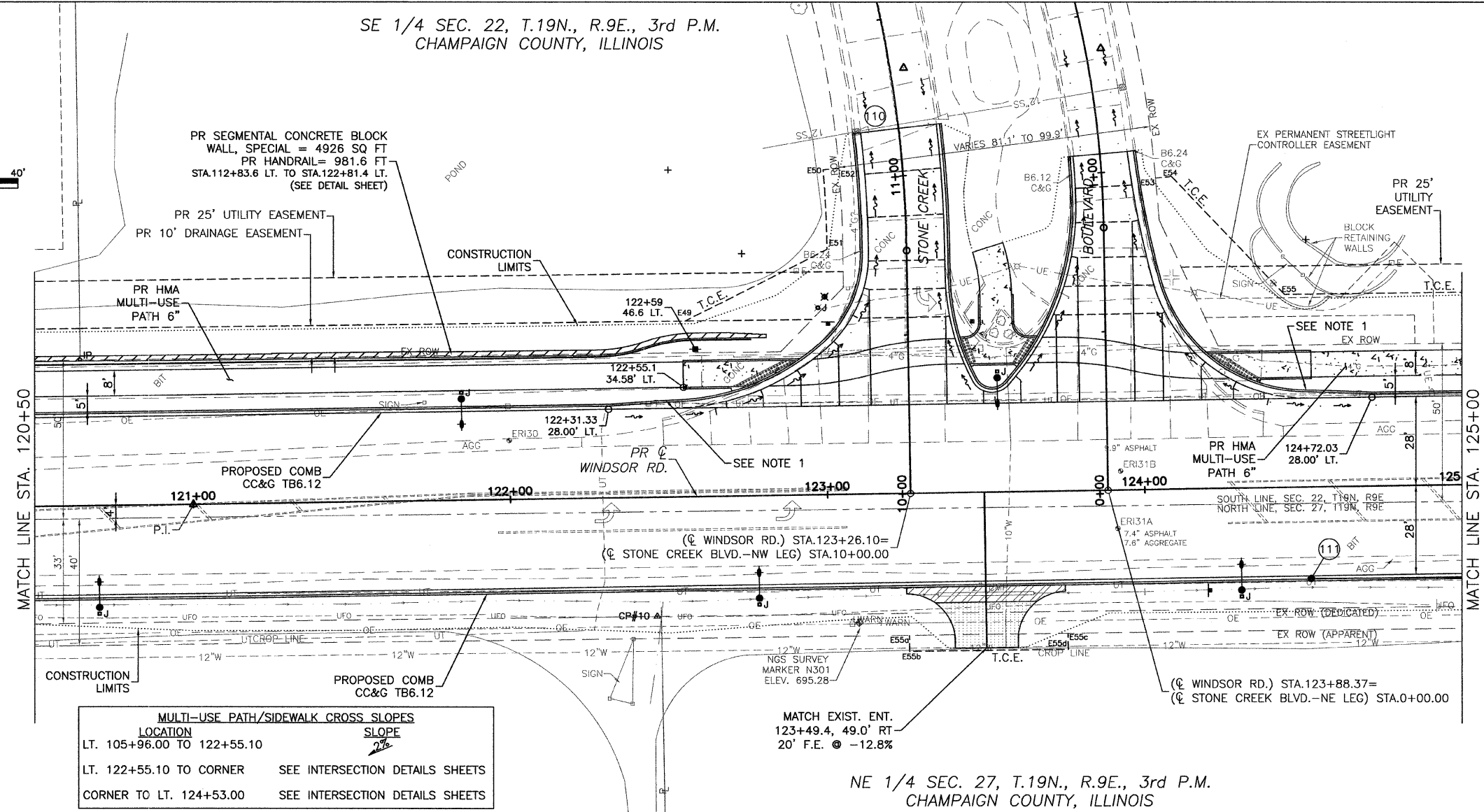
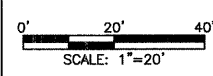


SE 1/4 SEC. 22, T.19N., R.9E., 3rd P.M.
CHAMPAIGN COUNTY, ILLINOIS

CONTRACT NO. 91391



CITY OF URBANA
PUBLIC WORKS
ENGINEERING DIVISION



- LEGEND**
- DETECTABLE WARNINGS
 - PCC SIDEWALK
 - PCC DRIVEWAY PAVEMENT
 - AGGREGATE SURFACE COURSE, TYPE A
 - INCIDENTAL HMA SURFACE
 - DRAINAGE STRUCTURE NO. 1 (SEE DRAINAGE SHEETS)

SEE INTERSECTION DETAILS FOR ADDITIONAL INFORMATION.

NOTES
1. TRANSITION CC&G B-6.12 TO CC&G B-6.24 IN 20'

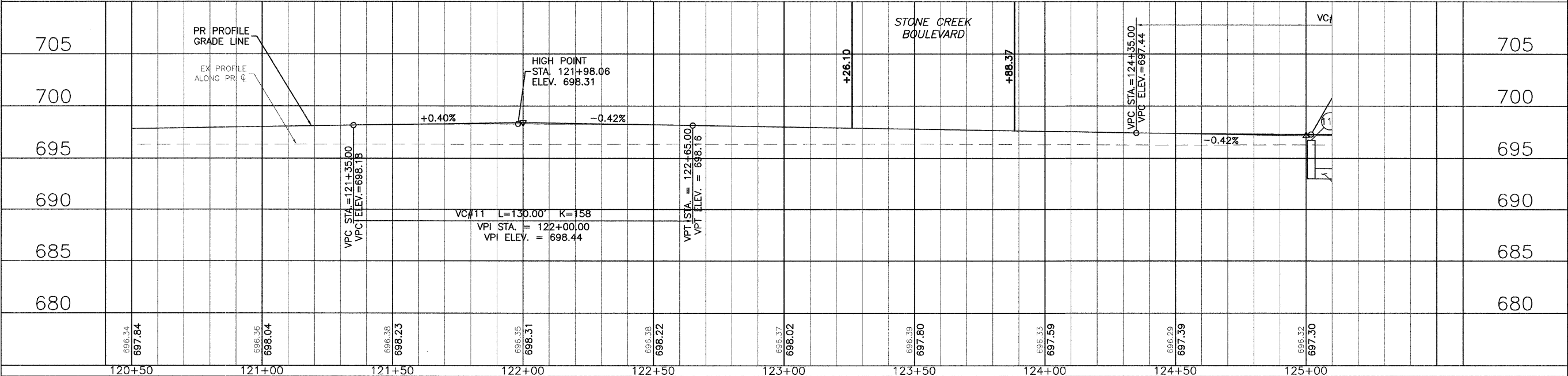
TEMPORARY CONSTRUCTION EASEMENT STATIONS AND OFFSETS

POINT	STATION	OFFSET
E49	122+85.93	55.38 LT
E50	123+00.70	102.30 LT
E51	123+01.02	102.65 LT
E52	123+05.18	77.32 LT
E53	124+04.97	98.00 LT
E54	124+09.96	98.37 LT
E55	124+45.00	60.85 LT
E55a	123+25.00	44.75 RT
E55b	123+25.00	49.75 RT
E55c	123+75.00	44.92 RT
E55d	123+75.00	49.92 RT

MULTI-USE PATH/SIDEWALK CROSS SLOPES

LOCATION	SLOPE
LT. 105+96.00 TO 122+55.10	2%
LT. 122+55.10 TO CORNER	SEE INTERSECTION DETAILS SHEETS
CORNER TO LT. 124+53.00	SEE INTERSECTION DETAILS SHEETS

NE 1/4 SEC. 27, T.19N., R.9E., 3rd P.M.
CHAMPAIGN COUNTY, ILLINOIS



WINDSOR ROAD IMPROVEMENTS
PLAN AND PROFILES
STA 120+50 TO STA 125+00

SHEET NO.
48
OF
145

MAR 20 2009 11:11AM PP STA120+50-125+00.DWG