



CITY OF URBANA
PUBLIC WORKS
ENGINEERING DIVISION

DRAWN BY: AUS
CHECKED BY: GLJ

DATED: 1/09
DESIGNED BY: CES
CITY SECTION
00-00361-00-PV

WINDSOR ROAD IMPROVEMENTS
PLAN AND PROFILES
STA 125+00 TO STA 129+50

SHEET NO.
49
OF
145

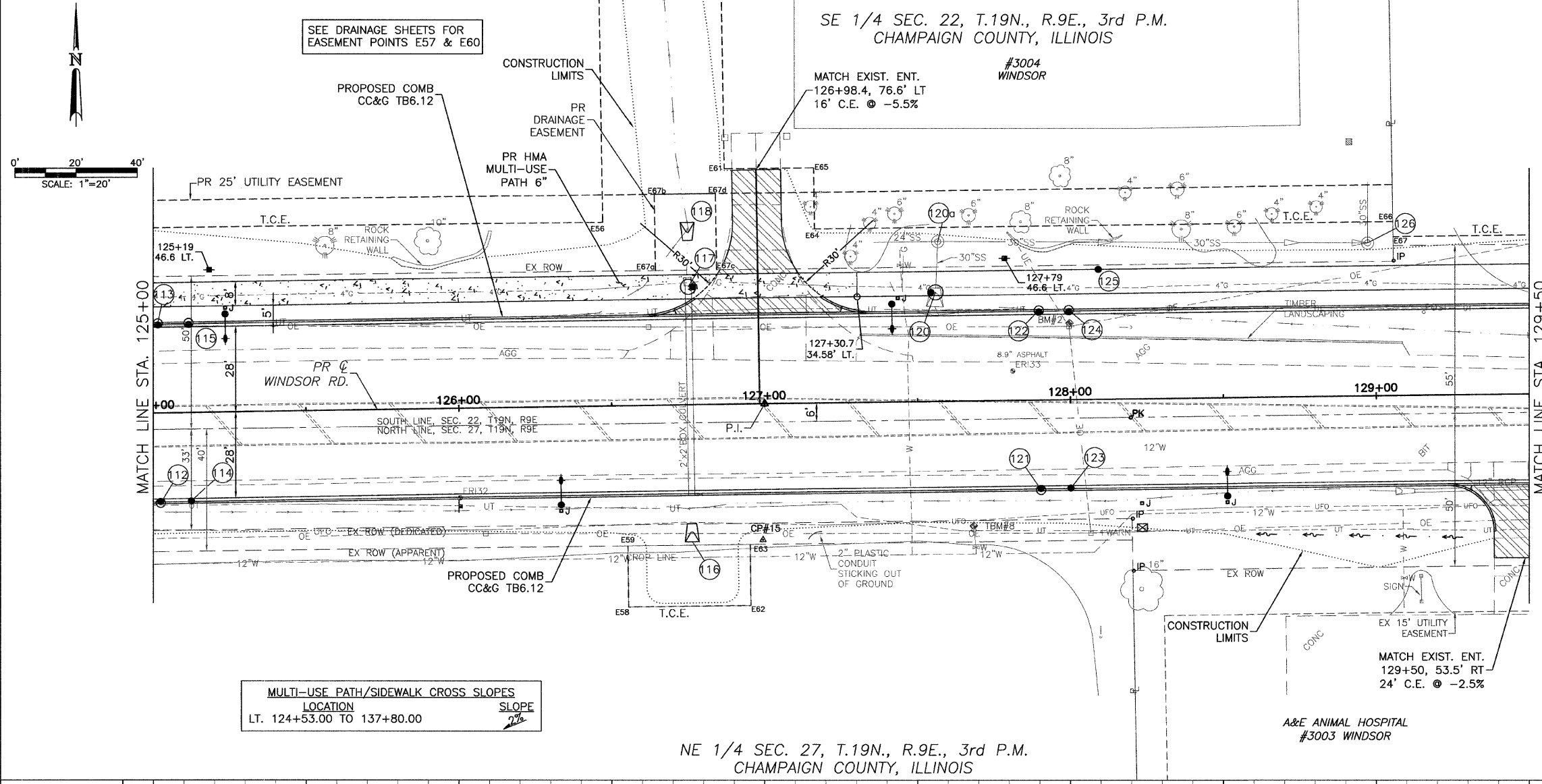
CONTRACT NO. 91391

- LEGEND**
- DETECTABLE WARNINGS
 - PCC SIDEWALK
 - PCC DRIVEWAY PAVEMENT
 - AGGREGATE SURFACE COURSE, TYPE A
 - INCIDENTAL HMA SURFACE
 - DRAINAGE STRUCTURE NO. (SEE DRAINAGE SHEETS)

SE 1/4 SEC. 22, T.19N., R.9E., 3rd P.M.
CHAMPAIGN COUNTY, ILLINOIS

#3004 WINDSOR

MATCH EXIST. ENT.
126+98.4, 76.6' LT
16' C.E. @ -5.5%



BM #2: STA. 128+00, 25' LT. 16 P.
NAIL IN N. SIDE OF POWER POLE ON N.
SIDE OF WINDSOR RD. 1429.00' W. OF
INTERSECTION RT. 130 & WINDSOR RD.
ELEV.= 695.57

TBM #8: STA. 127+68.50, 40.50' RT.
FLANGE BOLT BETWEEN THE 'E' & 'L' IN THE
WORD 'MUELLER' S. SIDE OF WINDSOR, E.
OF ENTRANCE INTO STONE CREEK
MAINTNENCE SHED 3004 WINDSOR
ELEV.=697.00

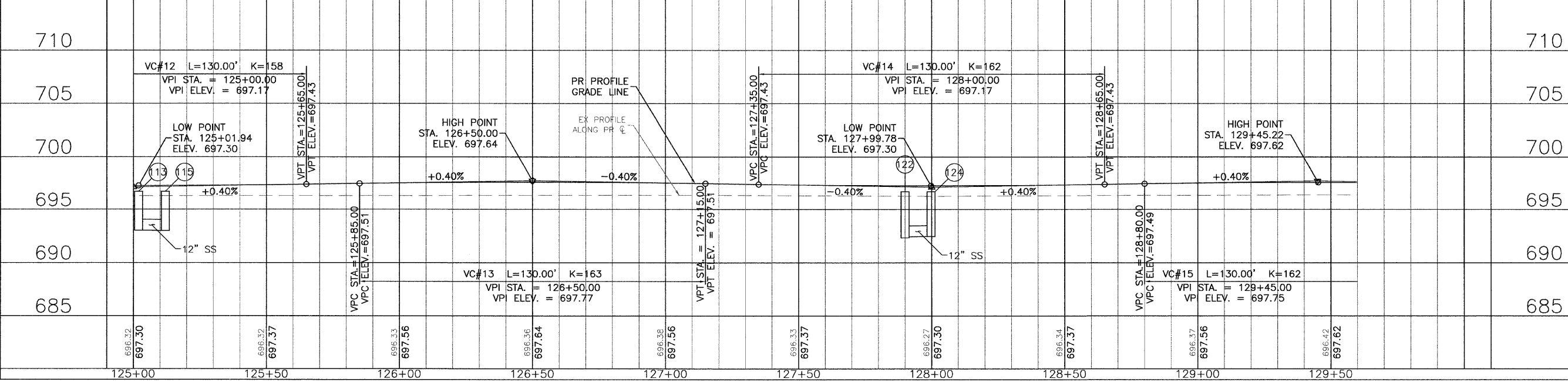
TEMPORARY CONSTRUCTION EASEMENT STATIONS AND OFFSETS

POINT	STATION	OFFSET
E56	126+48.00	60.17 LT
E57	126+48.00	164.17 LT
E58	126+54.45	65.85 RT
E59	126+54.51	45.85 RT
E60	126+88.00	77.04 RT
E61	162+88.00	164.17 RT
E62	126+94.45	65.98 RT
E63	126+94.51	45.98 RT
E64	127+17.00	57.00 LT
E65	127+17.00	77.00 LT
E66	129+06.12	52.00 LT
E67	129+06.13	57.00 LT
E67a	126+65.00	44.12 LT
E67b	126+65.00	69.12 LT
E67c	126+85.00	44.05 LT
E67d	126+85.00	69.01 LT

MULTI-USE PATH/SIDEWALK CROSS SLOPES

LOCATION	SLOPE
LT. 124+53.00 TO 137+80.00	2%

NE 1/4 SEC. 27, T.19N., R.9E., 3rd P.M.
CHAMPAIGN COUNTY, ILLINOIS



JAN 09 2009 12:06PM PP STA125+00-129+50.DWG