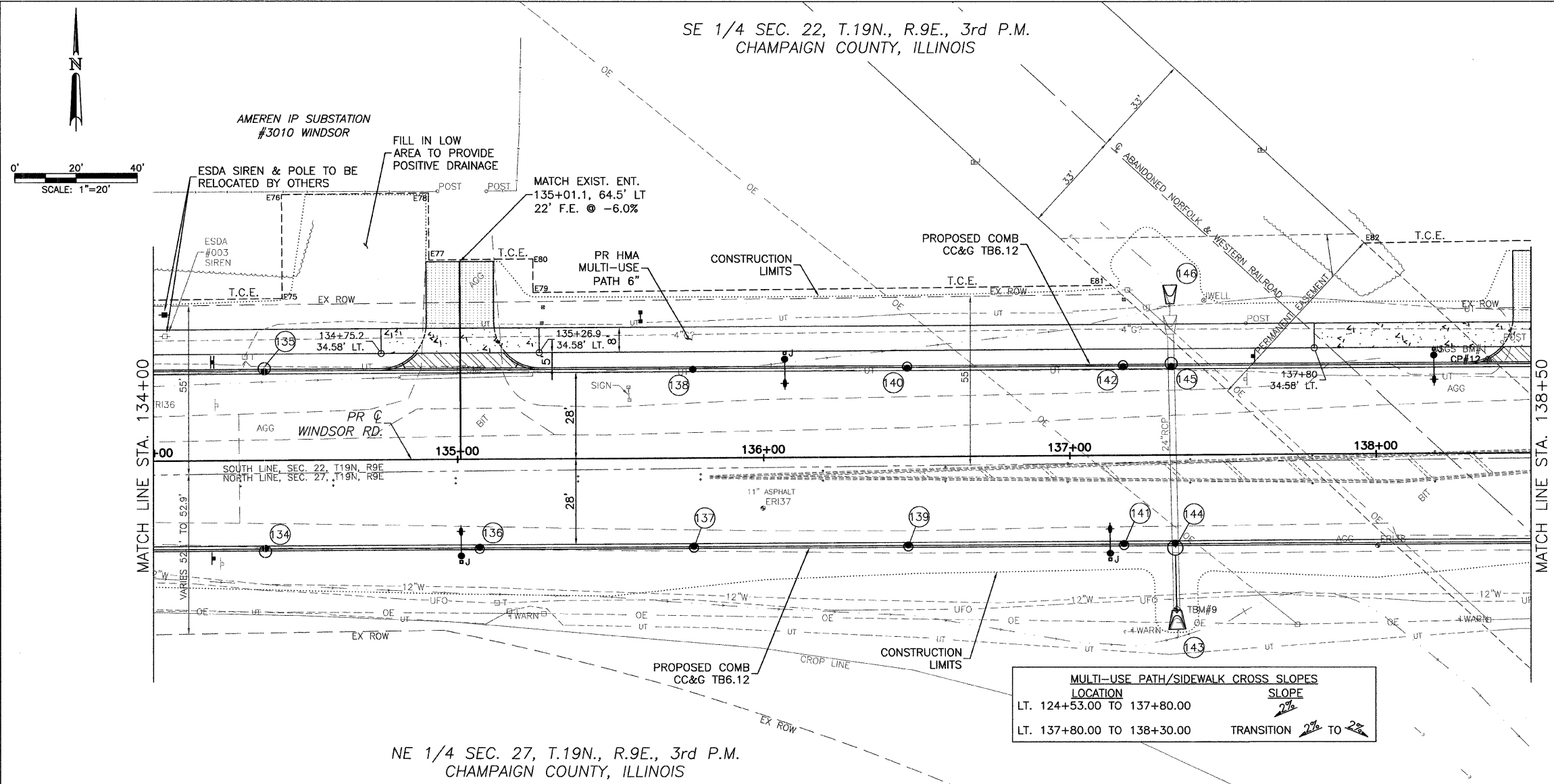
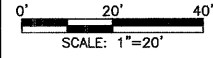




CITY OF URBANA
PUBLIC WORKS
ENGINEERING DIVISION

CONTRACT NO. 91391

SE 1/4 SEC. 22, T.19N., R.9E., 3rd P.M.
CHAMPAIGN COUNTY, ILLINOIS



- LEGEND**
- DETECTABLE WARNINGS
 - PCC SIDEWALK
 - PCC DRIVEWAY PAVEMENT
 - AGGREGATE SURFACE COURSE, TYPE A
 - INCIDENTAL HMA SURFACE
 - DRAINAGE STRUCTURE NO. (SEE DRAINAGE SHEETS)

U.S.G.S. BM #1: STA. 138+36.25, 30.30' LT. TABLET ON N. SIDE OF WINDSOR RD. NEAR INTERSECTION WITH RT. 130, 25' E. OF RR TRACK BED ELEV.= 693.82

TBM #9: STA. 137+34.97, 50.38' RT. BLACK MARKED SQUARE ON TOP OF F.E.S. OF THE 24' RCP ON THE SOUTH SIDE OF WINDSOR RD. ELEV.= 692.98

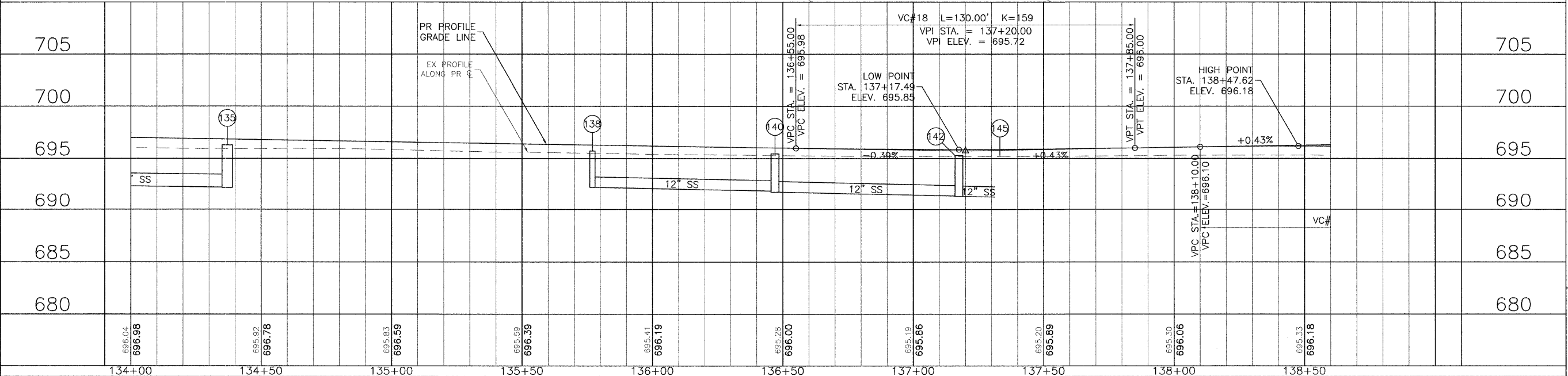
TEMPORARY CONSTRUCTION EASEMENT STATIONS AND OFFSETS

POINT	STATION	OFFSET
E75	134+43.00	52.77 LT
E76	134+43.00	86.77 LT
E77	134+91.00	65.08 LT
E78	134+91.00	87.08 LT
E79	135+25.00	54.30 LT
E80	135+25.00	65.30 LT
E81	137+13.99	55.52 LT
E82	137+96.67	68.86 LT

MULTI-USE PATH/SIDEWALK CROSS SLOPES

LOCATION	SLOPE
LT. 124+53.00 TO 137+80.00	2%
LT. 137+80.00 TO 138+30.00	TRANSITION 2% TO 2.5%

NE 1/4 SEC. 27, T.19N., R.9E., 3rd P.M.
CHAMPAIGN COUNTY, ILLINOIS



WINDSOR ROAD IMPROVEMENTS
PLAN AND PROFILES
STA 134+00 TO STA 138+50

SHEET NO.
51
OF
145

JAN 09 2009 12:10PM PP STA134+00-138+50.DWG

696.04	696.98	695.92	696.78	695.83	696.59	695.59	696.39	695.41	696.19	695.19	695.86	695.20	695.89	695.30	696.06	695.33	696.18
134+00	134+50	135+00	135+50	136+00	136+50	137+00	137+50	138+00	138+50								