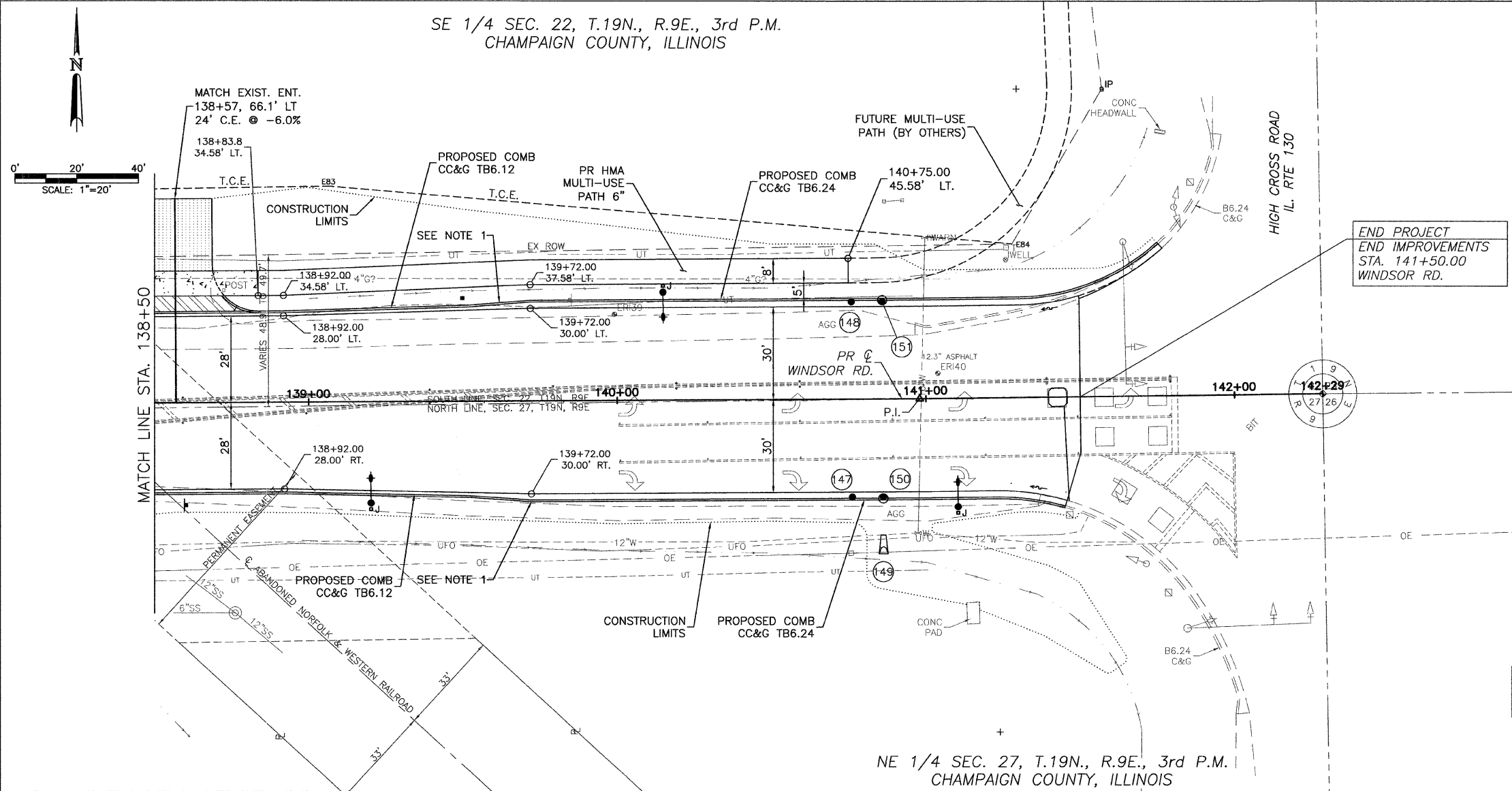


SE 1/4 SEC. 22, T.19N., R.9E., 3rd P.M.
CHAMPAIGN COUNTY, ILLINOIS

CONTRACT NO. 91391



CITY OF URBANA
PUBLIC WORKS
ENGINEERING DIVISION



- LEGEND**
- DETECTABLE WARNINGS
 - PCC SIDEWALK
 - PCC DRIVEWAY PAVEMENT
 - AGGREGATE SURFACE COURSE, TYPE A
 - INCIDENTAL HMA SURFACE
 - DRAINAGE STRUCTURE NO. (SEE DRAINAGE SHEETS)

NOTES
1. TRANSITION CC&G B-6.12 TO CC&G B-6.24 IN 20'

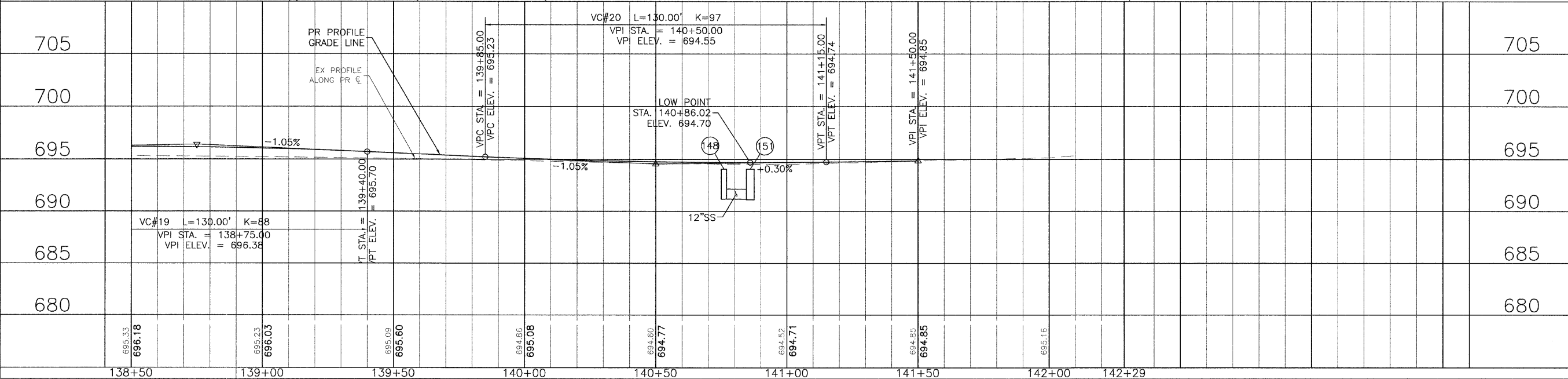
TEMPORARY CONSTRUCTION EASEMENT STATIONS AND OFFSETS

POINT	STATION	OFFSET
E83	139+07.00	69.88 LT
E84	141+28.47	49.72 LT

MULTI-USE PATH/SIDEWALK CROSS SLOPES

LOCATION	SLOPE
LT. 138+30.00 TO 140+75.00	2%

NE 1/4 SEC. 27, T.19N., R.9E., 3rd P.M.
CHAMPAIGN COUNTY, ILLINOIS



WINDSOR ROAD IMPROVEMENTS
PLAN AND PROFILES
STA 138+50 TO STA 142+29

SHEET NO.
52
OF
145

JAN 09 2009 12:12PM PP STA138+50-142+29.DWG