

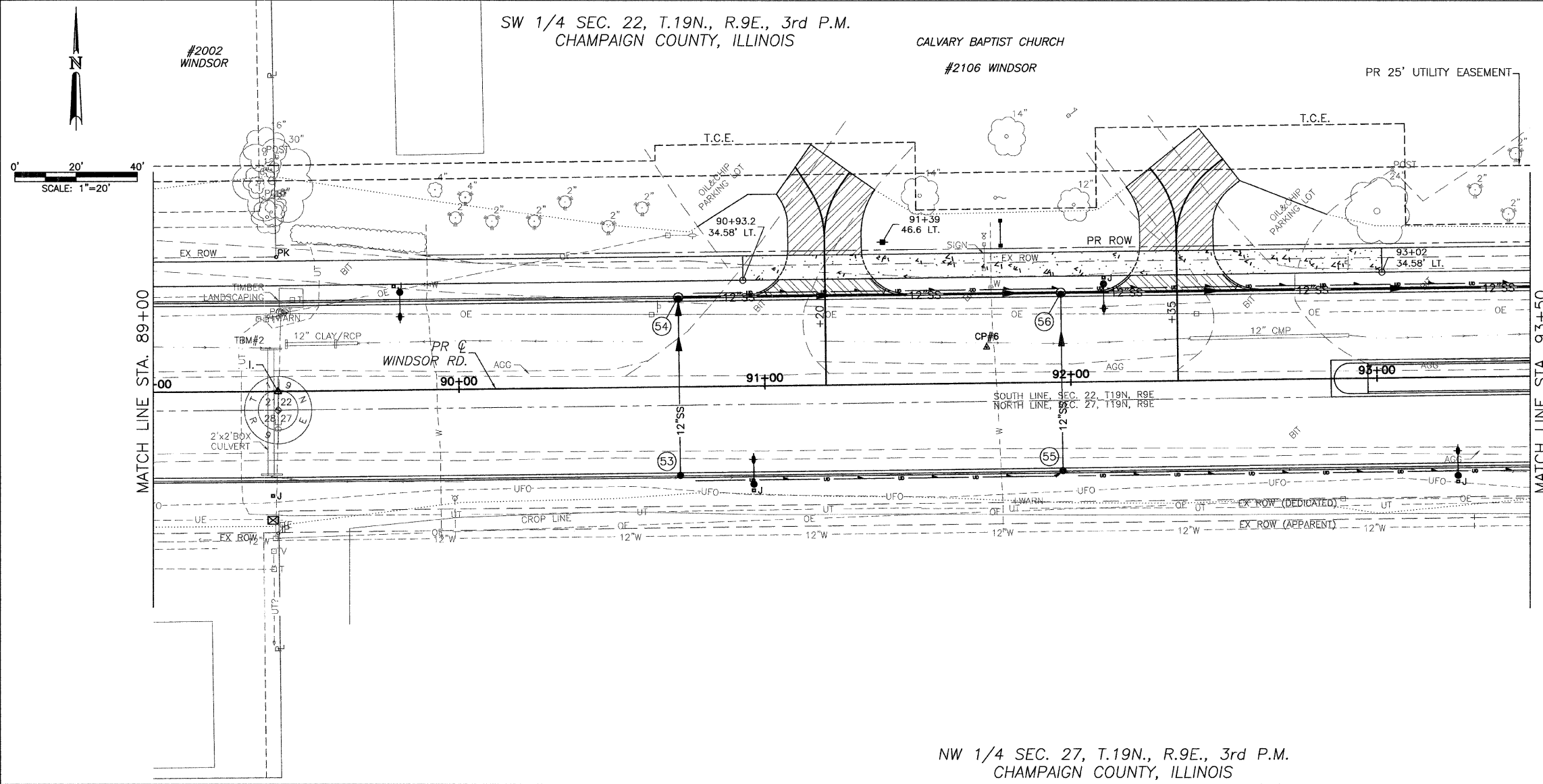


CITY OF URBANA
PUBLIC WORKS
ENGINEERING DIVISION

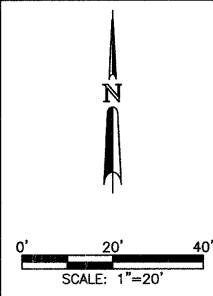
DRAWN BY: AJS
CHECKED BY: GLJ
DESIGNED BY: CES
CITY SECTION
00-00361-00-PV

WINDSOR ROAD IMPROVEMENTS
DRAINAGE PLANS
STA 89+00 TO STA 93+50

SHEET NO.
58
OF
145



TBM #2: STA. 89+38.70, 14.00' LT.
CHISELED SQUARE ON CONCRETE
HEADWALL ON N. SIDE OF WINDSOR RD.
EAST OF SUSAN STONE DR. W. OF WEST
MOST ENTRANCE TO CALVARY BAPTIST
CHURCH ELEV.= 732.02



SW 1/4 SEC. 22, T.19N., R.9E., 3rd P.M.
CHAMPAIGN COUNTY, ILLINOIS

CALVARY BAPTIST CHURCH
#2106 WINDSOR

NW 1/4 SEC. 27, T.19N., R.9E., 3rd P.M.
CHAMPAIGN COUNTY, ILLINOIS

STORM SEWER STRUCTURE SCHEDULE

STR. NO.	STRUCTURE TYPE	OFF-SET SIDE	STA. OF C/L STR.	OFFSET OF C/L STR.	EX. T/O FRAME/GRATE ELEV.	PR. T/O FRAME/GRATE ELEV.	PR. T/O FLAT SLAB TOP ELEV.	INVERT IN ELEV.	U.S. STR. NO.	INVERT OUT ELEV.	D.S. STR. NO.
53	INLETS TA T11 F&G	RT	90+72.00	28.79	----	732.93	----	----	---	728.93	54
54	RD INLET TY B T11 F&G	LT	90+72.00	29.29	----	732.93	731.43	728.65	53	728.45	56
55	INLETS TA T11V F&G	RT	91+97.00	28.79	----	731.80	----	----	---	727.80	56
56	RD INLET TY B T11V F&G	LT	91+97.00	29.29	----	731.80	730.30	727.52	54	727.32	58

STORM SEWER PIPE SCHEDULE

LOCATION STR. - STR. OR STA., O.S.	STORM SEW CL A 12 (FOOT)	STORM SEW CL A 2 12 (FOOT)	GRADE %	TRENCH BACKFILL (CU YD)
53 - 54	56		0.50	8.4
54 - 56		122	0.76	21.4
55 - 56	56		0.50	8.4
56 - 58		247	2.21	43.2