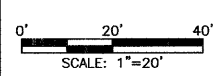
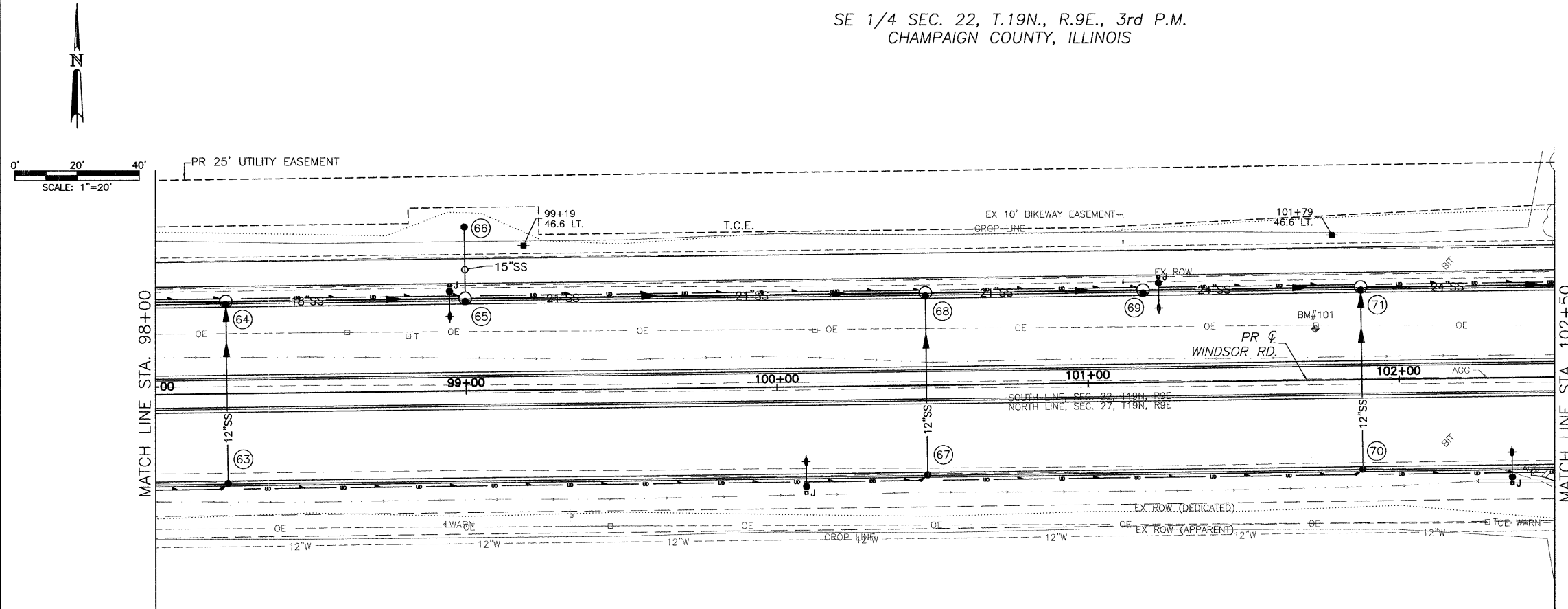


SE 1/4 SEC. 22, T.19N., R.9E., 3rd P.M.
CHAMPAIGN COUNTY, ILLINOIS

CONTRACT NO. 91391



CITY OF URBANA
PUBLIC WORKS
ENGINEERING DIVISION



EX UNDERGROUND TELEPHONE NOT SHOWN
FROM STA. 94+00 TO STA. 114+00

BM #101: STA. 101+73.00,
16.50' LT. RR SPIKE IN
FOURTEENTH POWER POLE WEST
OF STONE CREEK BLVD.
ELEV.= 718.41

NW 1/4 SEC. 27, T.19N., R.9E., 3rd P.M.
CHAMPAIGN COUNTY, ILLINOIS

STORM SEWER STRUCTURE SCHEDULE											
STR. NO.	STRUCTURE TYPE	OFF-SET SIDE	STA. OF C/L STR.	OFFSET OF C/L STR.	EX. T/O FRAME/GRATE ELEV.	PR. T/O FRAME/GRATE ELEV.	PR. T/O FLAT SLAB TOP ELEV.	INVERT IN ELEV.	U.S. STR. NO.	INVERT OUT ELEV.	D.S. STR. NO.
63	INLETS TA T11V F&G	RT	98+23.00	28.79	----	718.87	----	----	--	714.87	64
64	RD MAN 4 DIA T11V F&G	LT	98+23.00	29.79	----	718.87	717.37	714.39	62	714.19	65
65	RD MAN 4 DIA T11V F&G	LT	99+00.00	29.79	----	718.09	716.59	713.61	64	713.41	68
66	INLETS TA T37G	LT	99+00.00	52.73	----	717.41	----	----	--	714.29	65
67	INLETS TA T11V F&G	RT	100+48.00	28.79	----	716.70	----	----	--	712.70	68
68	RD MAN 4 DIA T11V F&G	LT	100+48.00	29.79	----	716.70	715.20	712.02	65	711.82	69
69	RD MAN 4 DIA T11V F&G	LT	101+18.00	29.79	----	716.04	714.54	711.36	68	711.16	71
70	INLETS TA T11V F&G	RT	101+88.00	28.79	----	715.38	----	----	--	711.38	71
71	RD MAN 4 DIA T11V F&G	LT	101+88.00	29.79	----	715.38	713.88	710.40	69	710.20	72
								711.10	70		

STORM SEWER PIPE SCHEDULE							
LOCATION STR. - STR. OR STA., O.S.	STORM CL A 1 12 (FOOT)	STORM CL A 1 15 (FOOT)	STORM CL A 1 18 (FOOT)	STORM CL A 1 21 (FOOT)	STORM CL A 1 24 (FOOT)	GRADE %	TRENCH BACKFILL (CU YD)
63 - 64	56					0.50	8.4
64 - 65			73			0.79	13.4
66 - 65		20				1.00	3.4
65 - 68				144		0.97	26.4
67 - 68	56					0.50	8.4
68 - 69				66		0.70	12.9
69 - 71					66	1.15	13.3
70 - 71	56					0.50	8.4
71 - 72					76	0.75	16.9

DATED: 1/09
DESIGNED BY: CES
DRAWN BY: AJS
CHECKED BY: GLJ

WINDSOR ROAD IMPROVEMENTS
DRAINAGE PLANS
STA 98+00 TO STA 102+50

SHEET NO.
60
OF
145

JAN 09 2009 1:25PM DRAINAGE_STA98+00-102+50.DWG