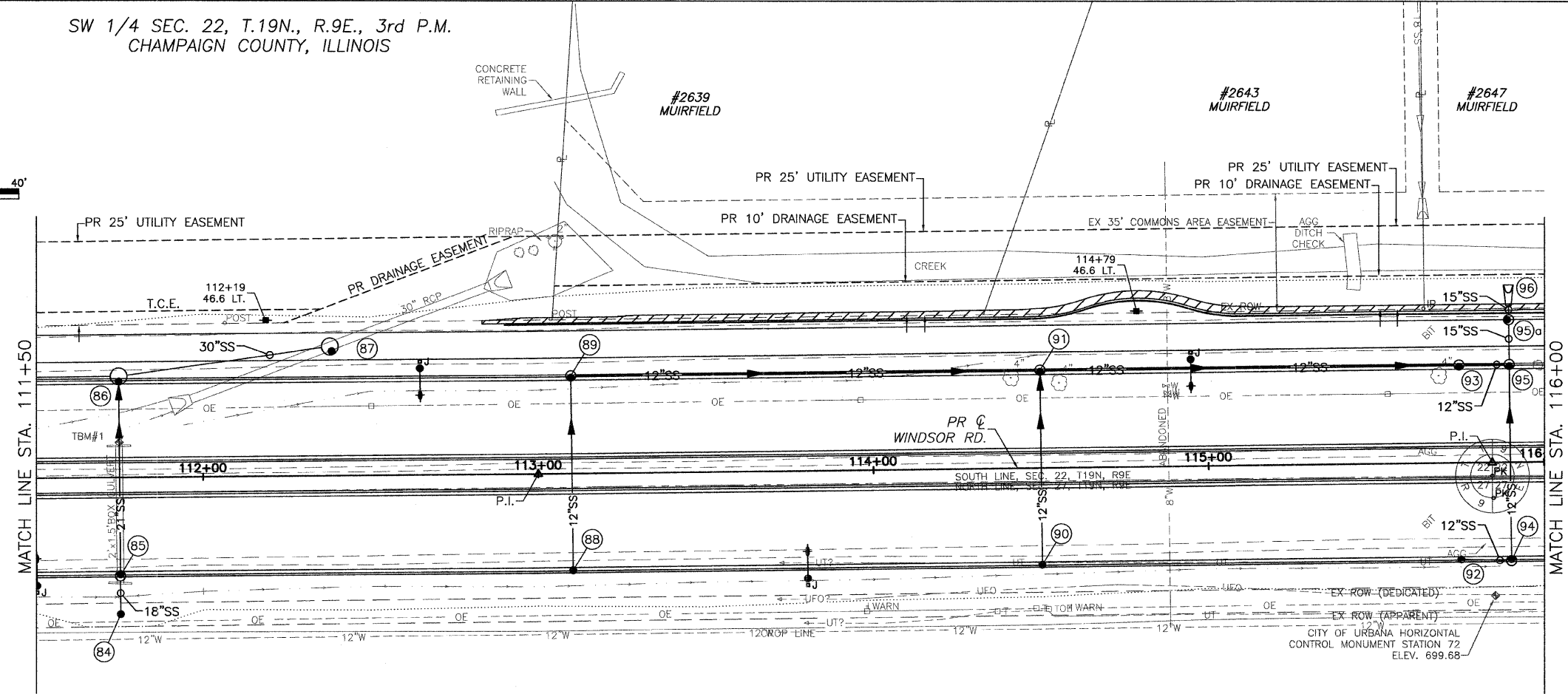
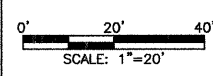


SW 1/4 SEC. 22, T.19N., R.9E., 3rd P.M.
CHAMPAIGN COUNTY, ILLINOIS

CONTRACT NO. 91391



CITY OF URBANA
PUBLIC WORKS
ENGINEERING DIVISION



EX UNDERGROUND TELEPHONE NOT SHOWN FROM STA. 94+00 TO STA. 114+00

TBM #1: STA. 111+74.90, 10.50' LT. CHISELED SQUARE ON CENTER OF CONCRETE HEADWALL OF 2'X2' BOX CULVERT ON N. SIDE OF WINDSOR RD., 1181' W. OF STONE CREEK BLVD. ELEV.= 702.14

NW 1/4 SEC. 27, T.19N., R.9E., 3rd P.M.
CHAMPAIGN COUNTY, ILLINOIS

STORM SEWER STRUCTURE SCHEDULE											
STR. NO.	STRUCTURE TYPE	OFF-SET SIDE	STA. OF C/L STR.	OFFSET OF C/L STR.	EX. T/O FRAME/GRATE ELEV.	PR. T/O FRAME/GRATE ELEV.	PR. T/O FLAT SLAB TOP ELEV.	INVERT IN ELEV.	U.S. STR. NO.	INVERT OUT ELEV.	D.S. STR. NO.
84	INLETS TA T37G	RT	111+75.00	40.77	----	701.25	----	----	---	698.81	85
85	RD INLET TY B T11V F&G	RT	111+75.00	29.29	----	703.26	701.76	698.76	84	698.56	86
86	RD MAN 5 DIA T11V F&G	LT	111+75.00	30.29	----	703.26	701.59	698.28	83	698.08	87
								698.28	85		
* 87	RD MAN 5 DIA T1F CL	LT	112+38.11	38.58	----	702.13	700.63	697.79	86	697.69	E
88	INLETS TA T11V F&G	RT	113+10.00	28.79	----	701.79	----	----	---	697.79	89
89	RD INLET TY B T11V F&G	LT	113+10.00	29.29	----	701.79	700.29	697.51	88	697.31	91
90	INLETS TA T11V F&G	RT	114+50.00	28.79	----	700.27	----	----	---	696.27	91
91	RD INLET TY B T11V F&G	LT	114+50.00	29.29	----	700.27	698.77	695.99	89	695.79	93
								695.99	90		
92	INLETS TA T11V F&G	RT	115+75.00	28.79	----	698.91	----	----	---	694.91	94
93	RD INLET TY B T11V F&G	LT	115+75.00	29.29	----	698.91	697.41	694.53	91	694.43	95
94	RD INLET TY B T11V F&G	RT	115+90.00	29.29	----	698.75	697.25	694.75	92	694.55	95
95	RD INLET TY B T11V F&G	LT	115+90.00	29.29	----	698.75	697.25	694.27	93	694.07	95a
								694.27	94		
** 95a	RD INLET TY B T1F OL	LT	115+90.00	42.58	----	698.20	----	693.97	95	693.92	96
*** 96	PRC FLAR END SEC 15	LT	115+90.00	52.87	----	----	----	----	---	693.83	DITCH

STORM SEWER PIPE SCHEDULE								
LOCATION STR. - STR. OR STA. O.S.	STORM SEW CL A 1 12 (FOOT)	STORM SEW CL A 1 18 (FOOT)	STORM SEW CL A 1 21 (FOOT)	STORM SEW CL A 1 30 (FOOT)	STORM SEW CL A 2 12 (FOOT)	STORM SEW CL A 2 15 (FOOT)	GRADE %	TRENCH BACKFILL (CU YD)
84 - 85	9						0.56	---
85 - 86			56				0.50	11.5
86 - 87				59			0.50	22.5
88 - 89	56						0.50	8.4
89 - 91					137		0.96	24.0
90 - 91	56						0.50	8.4
91 - 93					122		1.03	22.1
92 - 94	13						1.28	0.4
93 - 95					12		1.33	2.2
94 - 95					56		0.50	9.6
95 - 95a						11	1.00	3.8
95a - 96						3	1.00	0.5

E=EXISTING
* BUILD MANHOLE OVER EXISTING STORM SEWER. MANHOLE INVERT IS ESTIMATED. FIELD VERIFY. CENTER OF 2 FT. OPENING = STA. 112+38.62, 37.18 FT. LEFT.
** CENTER OF 2 FT. OPENING = STA. 115+89.50, 42.58 FT. LEFT.
***STATION, OFFSET AND INVERT TO END OF END SECTION.

DATED: 1/09
DESIGNED BY: CES
DRAWN BY: AJS
CHECKED BY: GLJ

WINDSOR ROAD IMPROVEMENTS
DRAINAGE PLANS
STA 111+50 TO STA 116+00

SHEET NO.
63
OF
145

MAR 20 2009 11:31AM DRAINAGE STA111+50-116+00.DWG