

NOTE:
ADDITIONAL WIDTH OF SIDEWALK
MAY BE REQUIRED DUE TO BLOCK
WALL OFFSET CHANGES.

SEGEMENTAL CONCRETE BLOCK WALL DETAIL

NO SCALE
STA. 82+01.3 RT TO STA. 82+08 RT
STA. 82+14 RT TO STA. 85+90.8 RT

GENERAL RETAINING WALL NOTES:

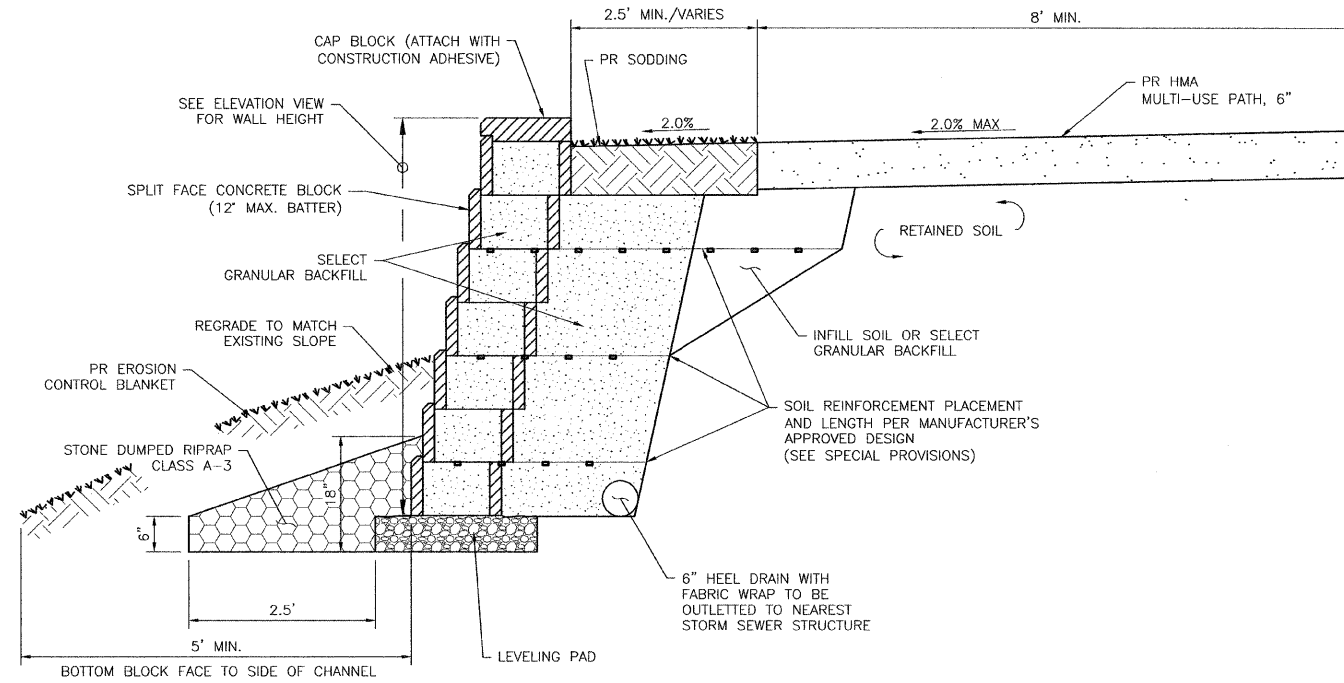
1. THE STATIONS, OFFSETS AND ELEVATIONS AS SHOWN IN THE DETAILS ARE BASED ON BLOCKS WITH THE FOLLOWING DIMENSIONS:

STANDARD BLOCK:
FRONT FACE WIDTH 18"
BACK FACE HEIGHT 8"
FRONT TO BACK DEPTH 12"

SET BACK: 12" WALL BATTER FROM VERTICAL

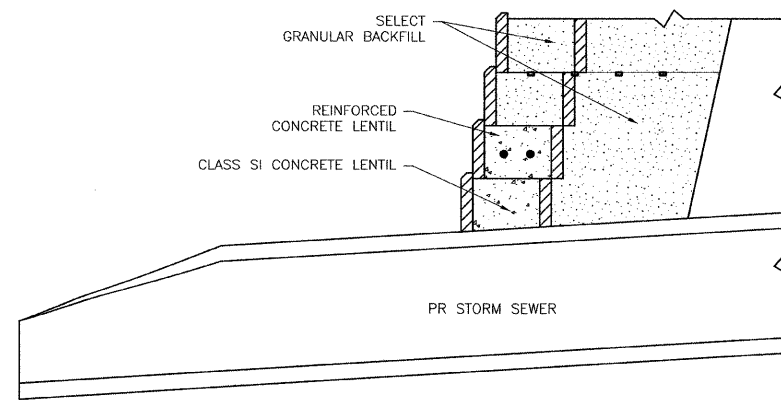
THE ACTUAL STATIONS, OFFSETS AND ELEVATIONS MAY VARY FROM THE DETAILS AT THE APPROVAL OF THE ENGINEER.

2. COLOR OF MODULAR BLOCK SHALL BE "TAN".
3. ESTIMATED QUANTITIES
SEGMENTAL CONCRETE BLOCK WALL = 797 SQ.FT.
SEGMENTAL CONCRETE BLOCK WALL, SPECIAL = 4926 SQ.FT.
STONE DUMPED RIPRAP, CLASS A-3 = 202 TON
4. SEE SPECIAL PROVISIONS FOR PAYMENT INFORMATION.



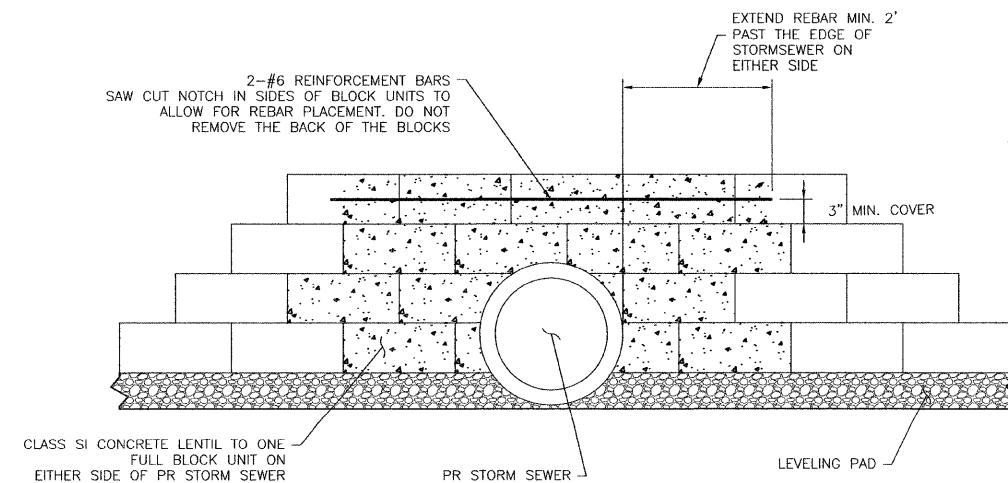
SEGMENTAL CONCRETE BLOCK WALL, SPECIAL DETAIL

NO SCALE
STA. 112+83.6 LT TO STA. 122+81.4 LT



PLAN VIEW

NO SCALE



ELEVATION VIEW

NO SCALE

CLASS SI CONCRETE COLLAR STORMSEWER OUTLET DETAIL

NO SCALE