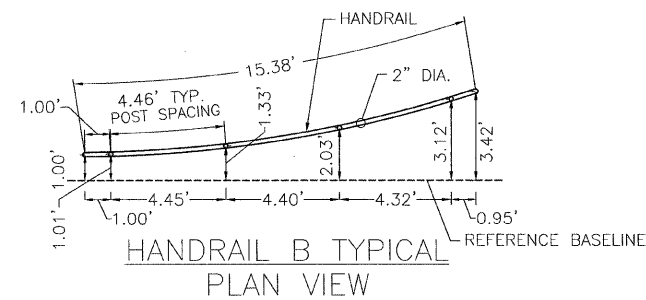
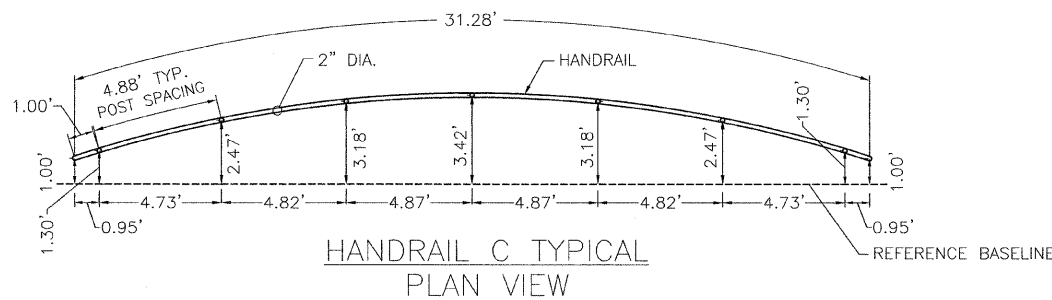


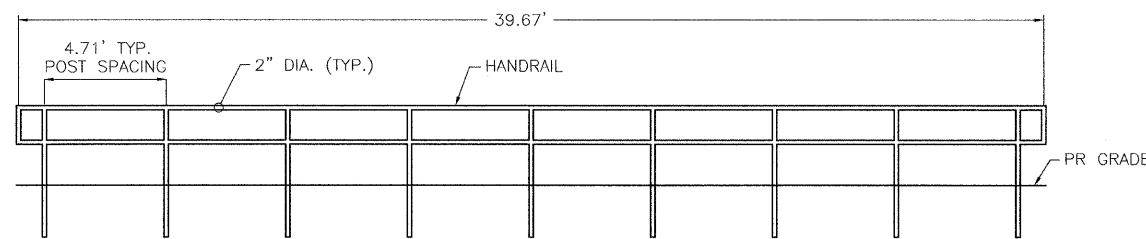
HANDRAIL A TYPICAL  
ELEVATION VIEW



HANDRAIL B TYPICAL  
PLAN VIEW

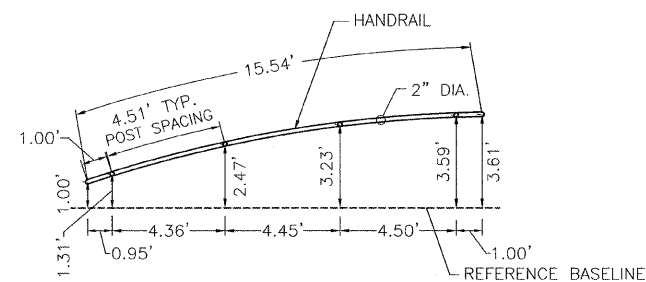


HANDRAIL C TYPICAL  
PLAN VIEW

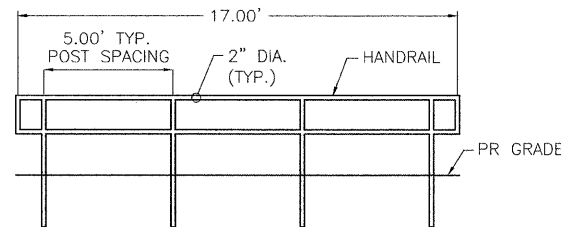


HANDRAIL D TYPICAL  
ELEVATION VIEW

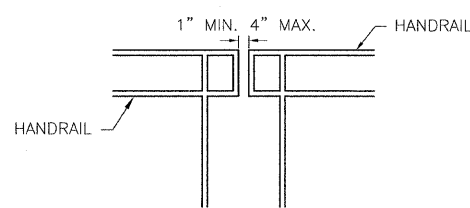
ELEVATION VIEW FOR HANDRAIL B, C, AND E  
IS SIMILAR TO HANDRAILS A, D, AND F.



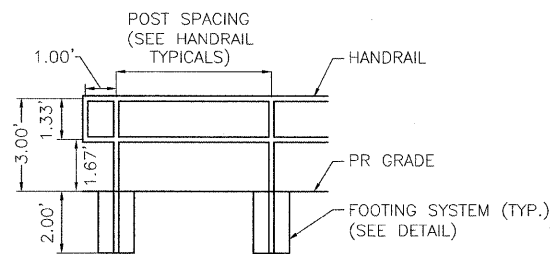
HANDRAIL E TYPICAL  
PLAN VIEW



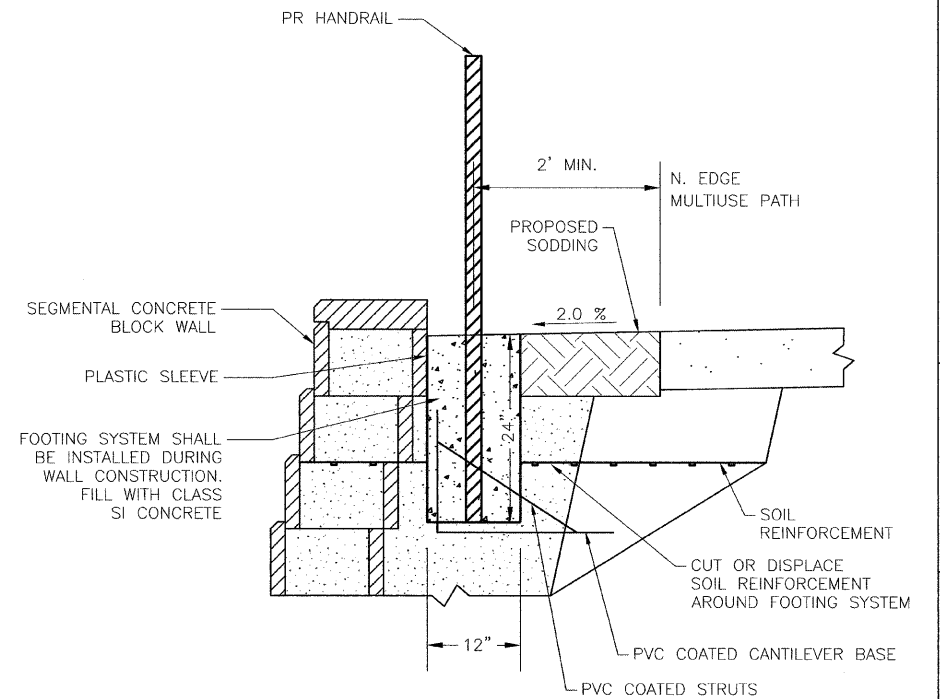
HANDRAIL F TYPICAL  
ELEVATION VIEW



TYPICAL HANDRAIL  
SPACING DETAIL



TYPICAL HANDRAIL  
END DETAIL



HANDRAIL FOOTING SYSTEM DETAIL  
NO SCALE

STATION AND OFFSETS TO CENTER OF HANDRAIL POSTS				
HANDRAIL	START STATION	OFFSET	END STATION	OFFSET
A1	112+91.36	44.55' LT	113+41.51	44.58' LT
A2	113+44.01	44.58' LT	113+94.01	44.58' LT
A3	113+96.51	44.58' LT	114+46.51	44.58' LT
A4	115+11.46	44.58' LT	115+61.46	44.58' LT
A5	115+63.96	44.58' LT	116+13.96	44.58' LT
A6	116+16.46	44.58' LT	116+66.46	44.58' LT
A7	117+71.46	44.58' LT	118+21.46	44.58' LT
A8	118+23.96	44.58' LT	118+73.96	44.58' LT
A9	118+76.46	44.59' LT	119+26.46	44.58' LT
A10	120+31.46	44.58' LT	120+81.46	44.58' LT
A11	120+83.96	44.59' LT	121+34.11	44.58' LT
A12	121+36.61	44.58' LT	121+86.61	44.58' LT
B1	114+49.01	44.60' LT	114+62.18	46.71' LT
B2	114+95.79	46.71' LT	115+08.96	44.60' LT
B3	117+09.01	44.60' LT	117+22.18	46.71' LT
B4	117+55.79	46.71' LT	117+68.96	44.60' LT
B5	119+69.01	44.60' LT	119+82.18	46.71' LT
B6	120+15.79	46.71' LT	120+28.96	44.60' LT
B7	122+29.05	44.59' LT	122+42.22	46.66' LT
C1	114+64.56	47.46' LT	114+93.40	47.46' LT
C2	117+24.56	47.46' LT	117+53.40	47.46' LT
C3	119+84.56	47.46' LT	120+13.40	47.46' LT
D1	116+68.90	44.58' LT	117+06.57	44.58' LT
D2	119+28.90	44.58' LT	119+66.57	44.58' LT
D3	121+88.99	44.58' LT	122+26.66	44.58' LT
E1	122+44.61	47.40' LT	122+57.96	49.46' LT
F1	122+60.46	49.46' LT	122+75.46	49.41' LT

NOTES:

- ALL POSTS AND RAILS SHALL BE 2" DIA. STANDARD WEIGHT PIPE, ASTM A 120. ALL CONNECTIONS SHALL BE MITERED, FULL BUTT WELDED AND GROUND SMOOTH. RAILWAYS AND POSTS SHALL BE FINISHED WITH A STANDARD BLACK FINISH.
- FURNISHING AND ERECTING PIPE HANDRAIL SHALL BE IN ACCORDANCE WITH APPLICABLE PORTIONS OF SECTION 509 OF THE STANDARD SPECIFICATIONS.
- THE FOOTING SYSTEM SHALL CONSIST OF A PLASTIC SLEEVE WITH PVC COATED STEEL CANTILEVER STRUTS AND BASE. FOOTING SYSTEM INSTALLATION SHALL BE PER MANUFACTURERS REQUIREMENTS.
- THIS WORK WILL BE PAID FOR AT THE CONTRACT UNIT PRICE PER FOOT FOR "HANDRAIL" WHICH PRICE SHALL INCLUDE ALL LABOR AND MATERIAL AS SPECIFIED INCLUDING PIPE HANDRAIL AND HANDRAIL FOOTING SYSTEM. MEASUREMENT FOR PAYMENT SHALL BE MADE ALONG THE TOP RAIL FROM END TO END OF COMPLETED INSTALLATION.
- ESTIMATED QUANTITIES  
HANDRAIL = 981.6 FT.