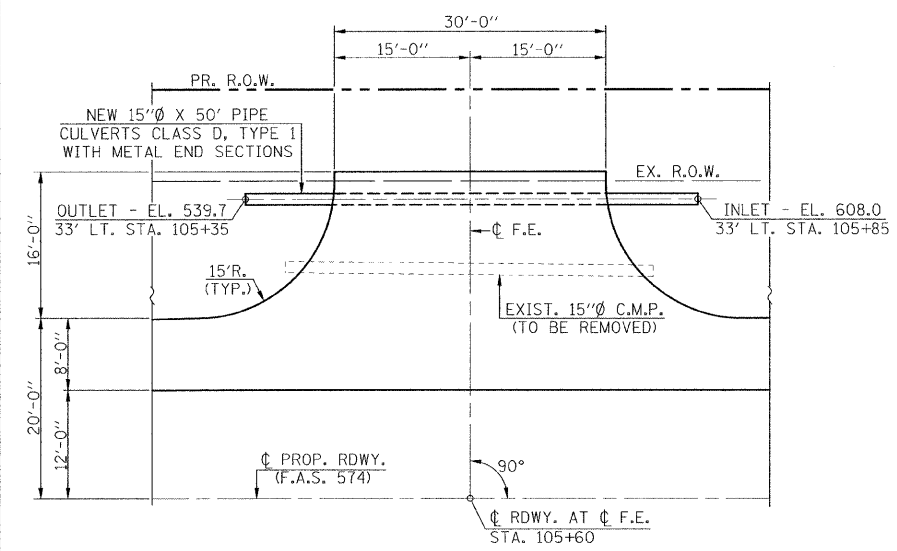
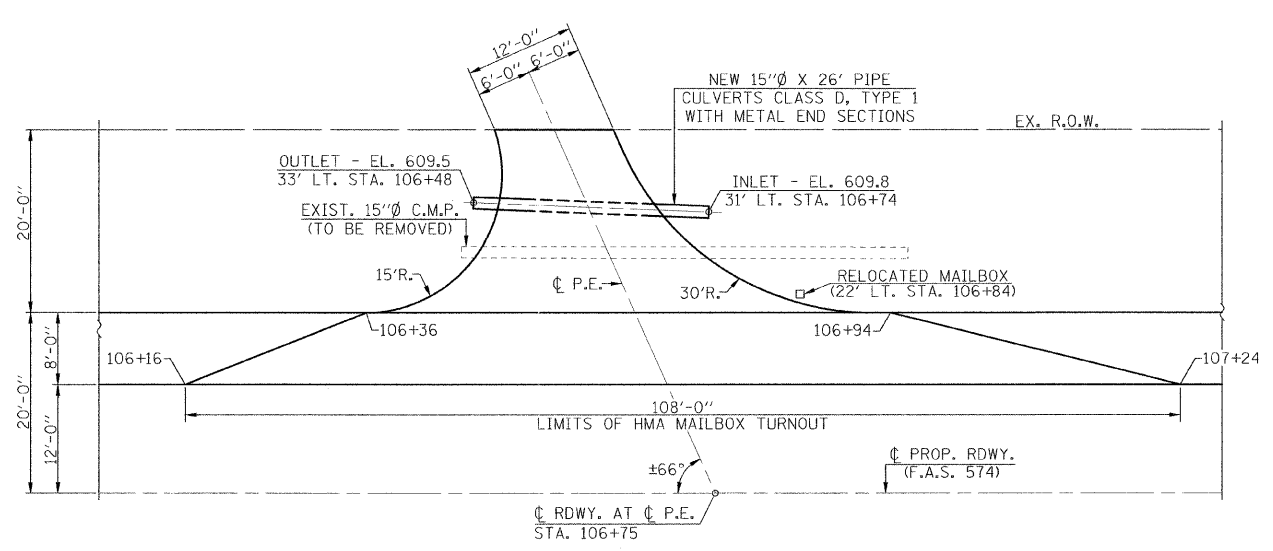


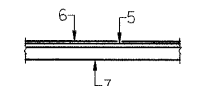
F.A.S. RTE.	SECTION	COUNTY	TOTAL SHEETS	SHEET NO.
574	07-00056-00-PV	MENARD	34	9347
FED. ROAD DIST. NO.		ILLINOIS FED. AID PROJECT		
		CONTRACT NO.		



PLAN
(F.E. STA. 105+60 LT.)

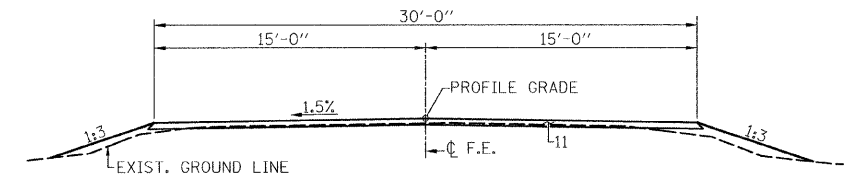


PLAN
(P.E. STA. 106+75 LT.)

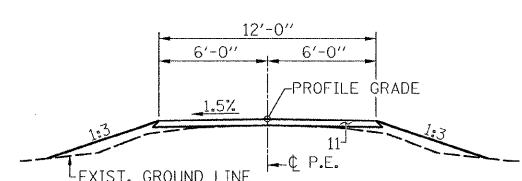


SECTION THRU MAILBOX TURNOUT

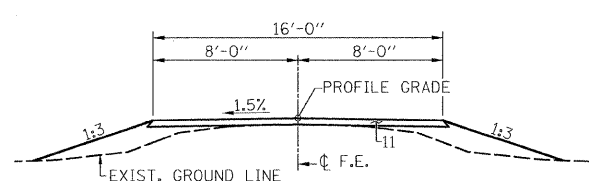
- PAVEMENT LEGEND**
- EXISTING AGGREGATE BASE COURSE (±7")
 - EXISTING HOT MIX ASPHALT OVERLAYS (±5")
 - EXISTING AGGREGATE SHOULDER WEDGE
 - PROPOSED AGGREGATE BASE COURSE TYPE A (12")
 - PROPOSED HOT MIX ASPHALT BINDER COURSE IL-19.0 N50 (3")
 - PROPOSED HOT MIX ASPHALT SURFACE COURSE, MIX. C N50 (2")
 - PROPOSED AGGREGATE SHOULDERS TYPE A (6")
 - PROPOSED AGGREGATE SURFACE COURSE TYPE A 8"
 - PROPOSED PAINT PAVEMENT MARKING - LINE 4"
 - PROPOSED AGGREGATE SURFACE COURSE, TYPE B 6"
 - PROPOSED AGGREGATE SHOULDERS TYPE A 4"



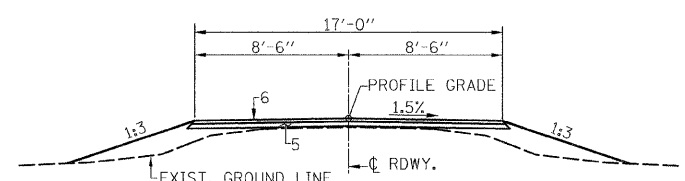
CROSS SECTION
(F.E. STA. 105+60 LT.)



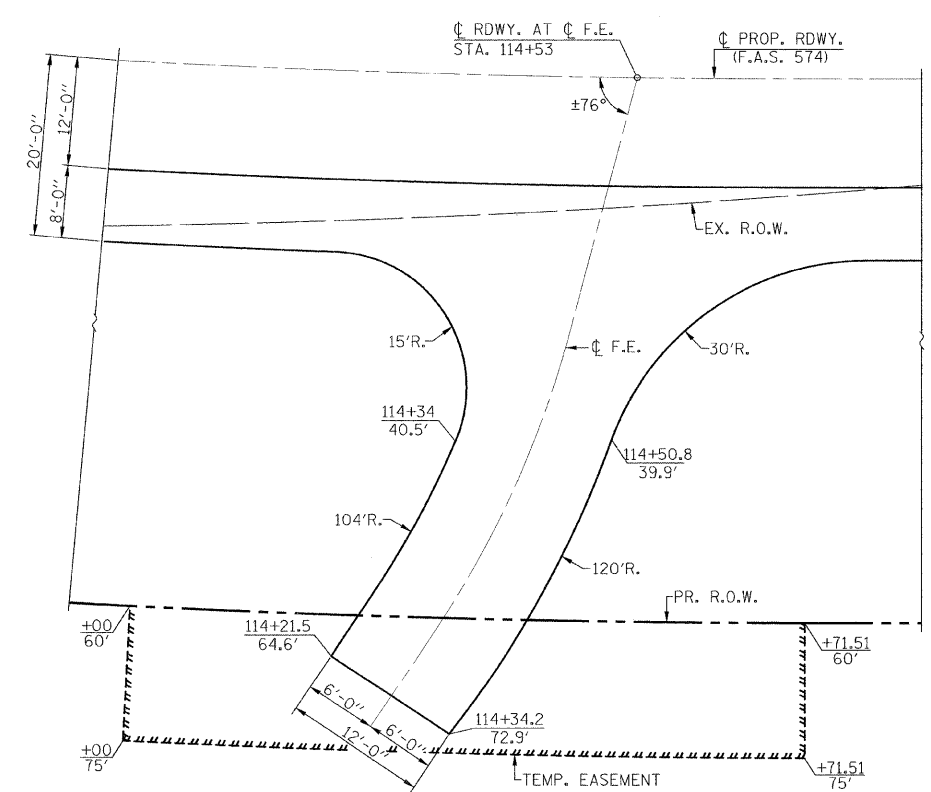
CROSS SECTION
(P.E. STA. 106+75 LT.)



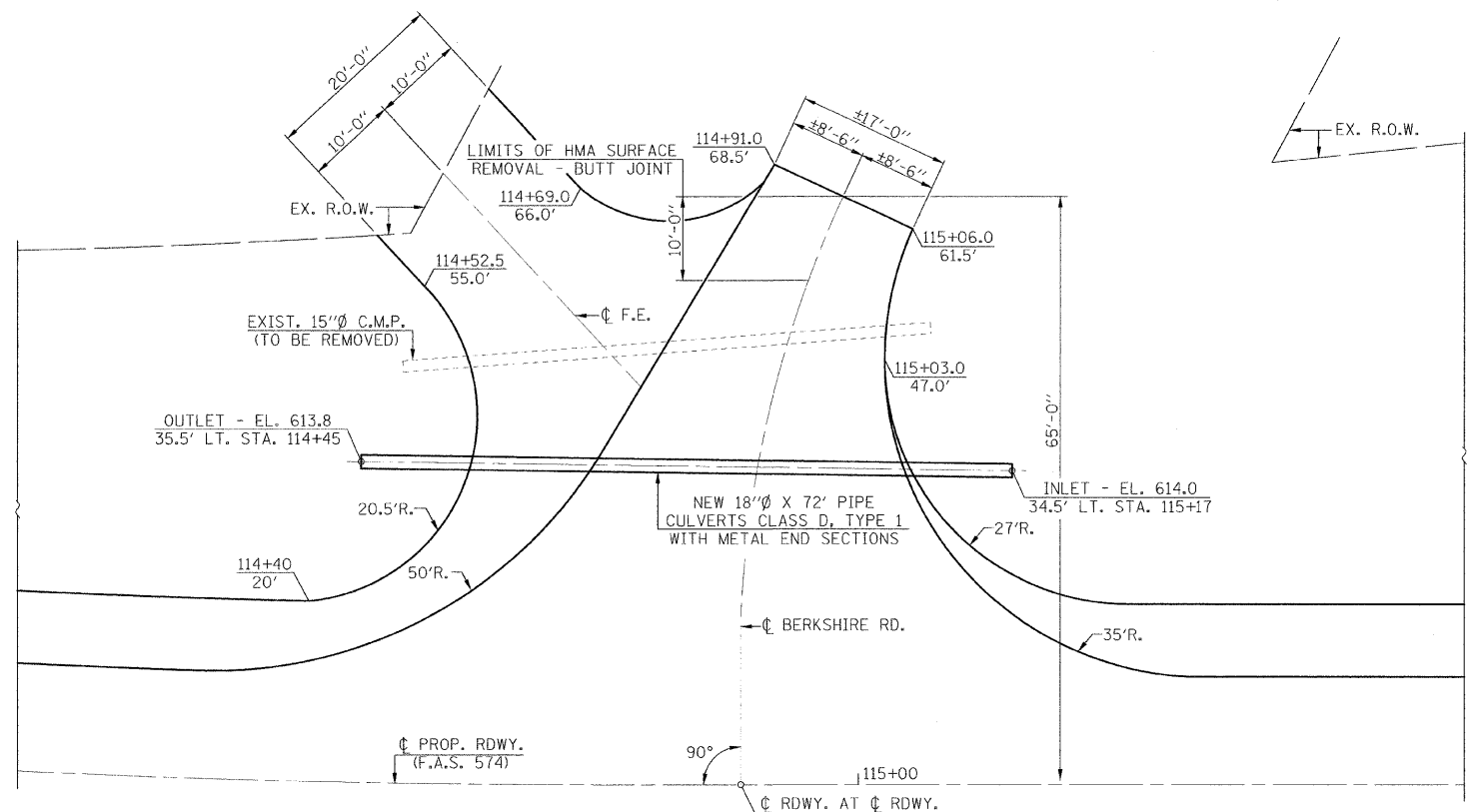
CROSS SECTION
(F.E. STA. 114+53 RT.)



CROSS SECTION
(BERKSHIRE ROAD STA. 114+87 LT.)



PLAN
(F.E. STA. 114+53 RT.)



PLAN
(BERKSHIRE ROAD - STA. 114+87 LT.)

FILE NAME =	USER NAME = #USER#	DESIGNED -	REVISED -
\$FILE#		DRAWN -	REVISED -
	PLOT SCALE = \$SCALE#	CHECKED -	REVISED -
	PLOT DATE = \$DATE#	DATE -	REVISED -

Allen Henderson & Associates, Inc.
Civil and Structural Engineers Springfield, IL.
62703 Phone: (217)544-8033 IL Design Firm
No. 184-001907

ENTRANCE AND INTERSECTION DETAILS

SCALE: 1" = 10' SHEET NO. OF SHEETS STA. 102+90.00 TO STA. 134+10.00

F.A.S. RTE.	SECTION	COUNTY	TOTAL SHEETS	SHEET NO.
574	07-00056-00-PV	MENARD	34	4
FED. ROAD DIST. NO.		ILLINOIS FED. AID PROJECT		
		CONTRACT NO.		

ATTACHMENT #6