

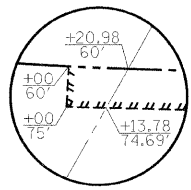
SECTION 29, R. 6 W., T. 18 N. 3rd P.M.

F.A.S. RTE.	SECTION	COUNTY	TOTAL SHEETS	SHEET NO.
574	07-00056-00-PV	MENARD	34	8
FED. ROAD DIST. NO.			ILLINOIS FED. AID PROJECT	
			CONTRACT NO. 93477	

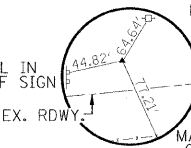
CHARLES D. JONES

CURTIS L. SAMPSON

JAMES L. SAMPSON

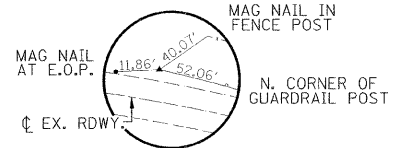


DETAIL A



CONTROL POINT C

50' LT. STA. 115+24  
1/2" Ø IRON PIN  
N. 1207215.10, E. 2399648.60  
EL. 616.66



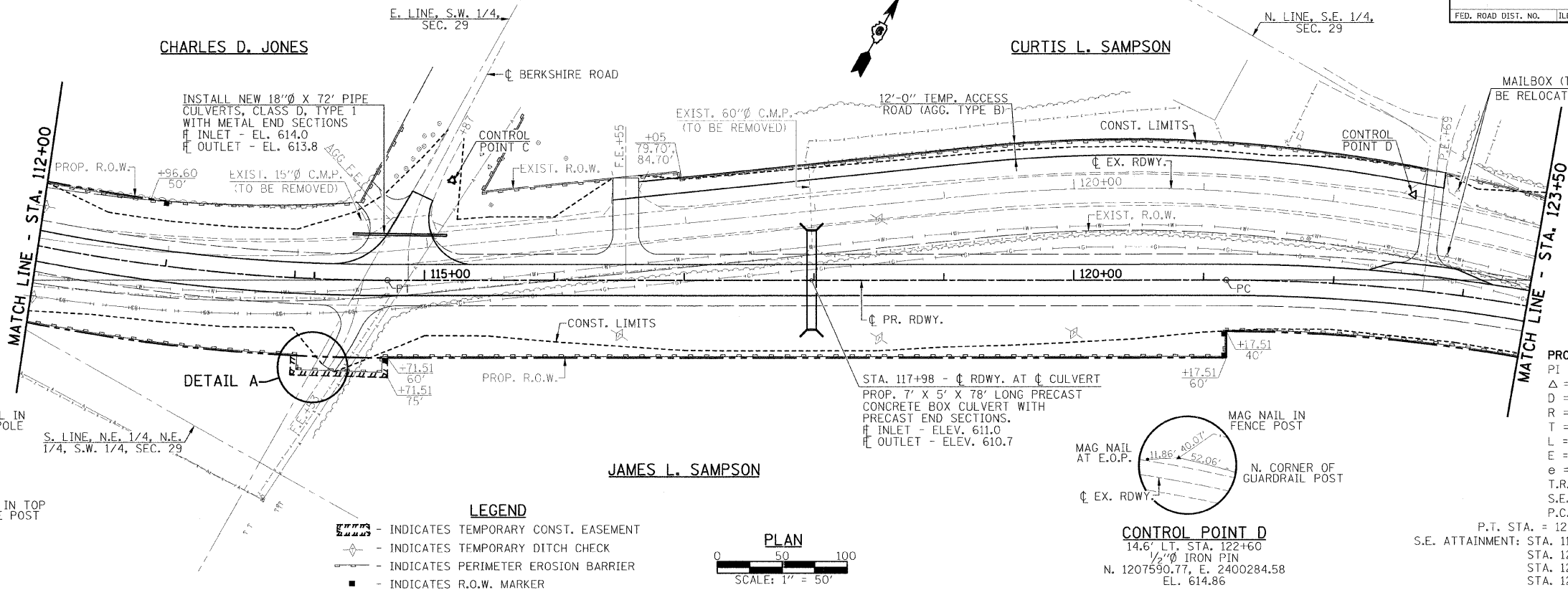
CONTROL POINT D

14.6' LT. STA. 122+60  
1/2" Ø IRON PIN  
N. 1207590.77, E. 2400284.58  
EL. 614.86

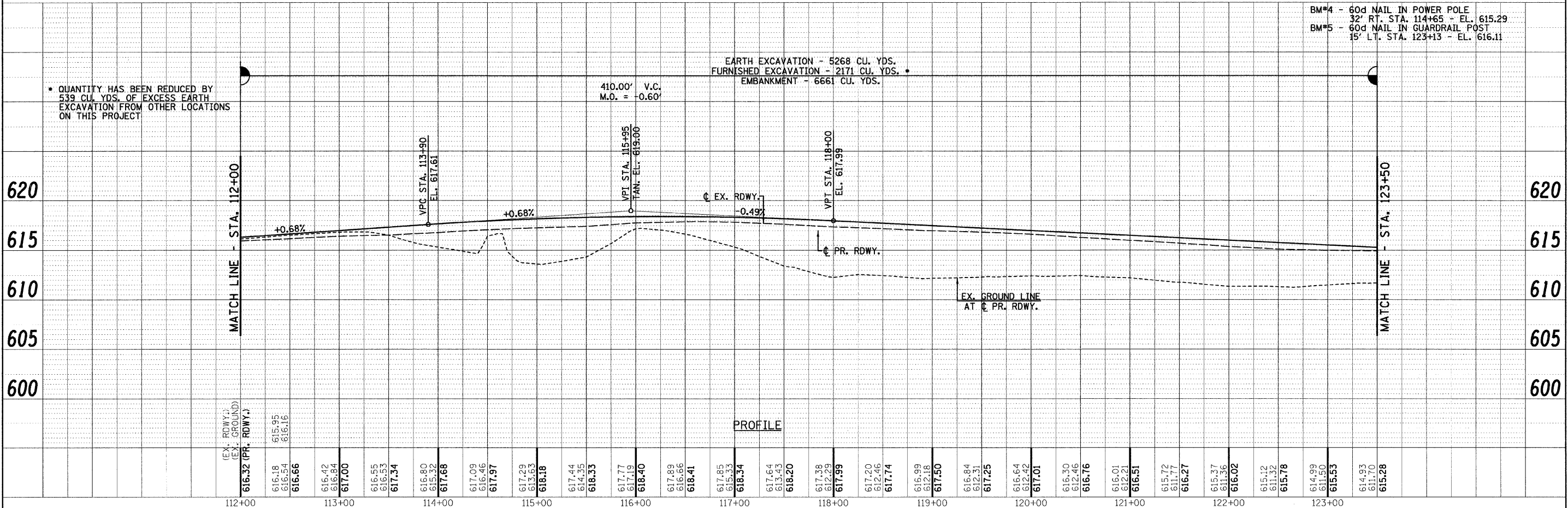
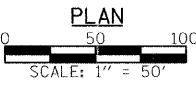
PROP. CURVE C6  
PI STA. = 124+74.51  
 $\Delta = 29^\circ 40' 18''$  (RT)  
D = 4° 15' 04"  
R = 1,347.78'  
T = 357.00'  
L = 697.97'  
E = 46.48'  
e = 0.06'/'  
T.R. = 40'  
S.E. RUN = 160'  
P.C. STA. = 121+17.51  
P.T. STA. = 128+15.48 = STA. 128+36.78 BACK  
S.E. ATTAINMENT: STA. 119+67.51 TO STA. 121+67.51 LT.  
STA. 120+47.51 TO STA. 121+67.51 RT.  
STA. 127+65.48 TO STA. 129+65.48 LT.  
STA. 127+65.48 TO STA. 128+85.48 RT.

DATE	BY

DATE	BY



- LEGEND**
- INDICATES TEMPORARY CONST. EASEMENT
  - - - INDICATES TEMPORARY DITCH CHECK
  - - - INDICATES PERIMETER EROSION BARRIER
  - INDICATES R.O.W. MARKER



\* QUANTITY HAS BEEN REDUCED BY 539 CU. YDS. OF EXCESS EARTH EXCAVATION FROM OTHER LOCATIONS ON THIS PROJECT

EARTH EXCAVATION - 5268 CU. YDS.  
FURNISHED EXCAVATION - 2171 CU. YDS.  
EMBANKMENT - 6661 CU. YDS.

BM\*4 - 60d NAIL IN POWER POLE  
32' RT. STA. 114+65 - EL. 615.29  
BM\*5 - 60d NAIL IN GUARDRAIL POST  
15' LT. STA. 123+13 - EL. 616.11

FILE NAME =	USER NAME = #USER*	DESIGNED -	REVISED -	<p>Allen Henderson &amp; Associates, Inc. Civil and Structural Engineers Springfield, IL 62703 Phone: (217)544-8033 IL Design Firm No. 184-001907</p>	SCALE: 1" = 50'		SHEET NO. OF SHEETS	STA. 102+90.00 TO STA. 134+10.00	F.A.S. RTE.	SECTION	COUNTY	TOTAL SHEETS	SHEET NO.
		CHECKED -	REVISED -		PLAN & PROFILE		574	07-00056-00-PV	MENARD	34	8		
		DRAWN -	REVISED -				CONTRACT NO.						
		CHECKED -	REVISED -				FED. ROAD DIST. NO.		ILLINOIS FED. AID PROJECT				