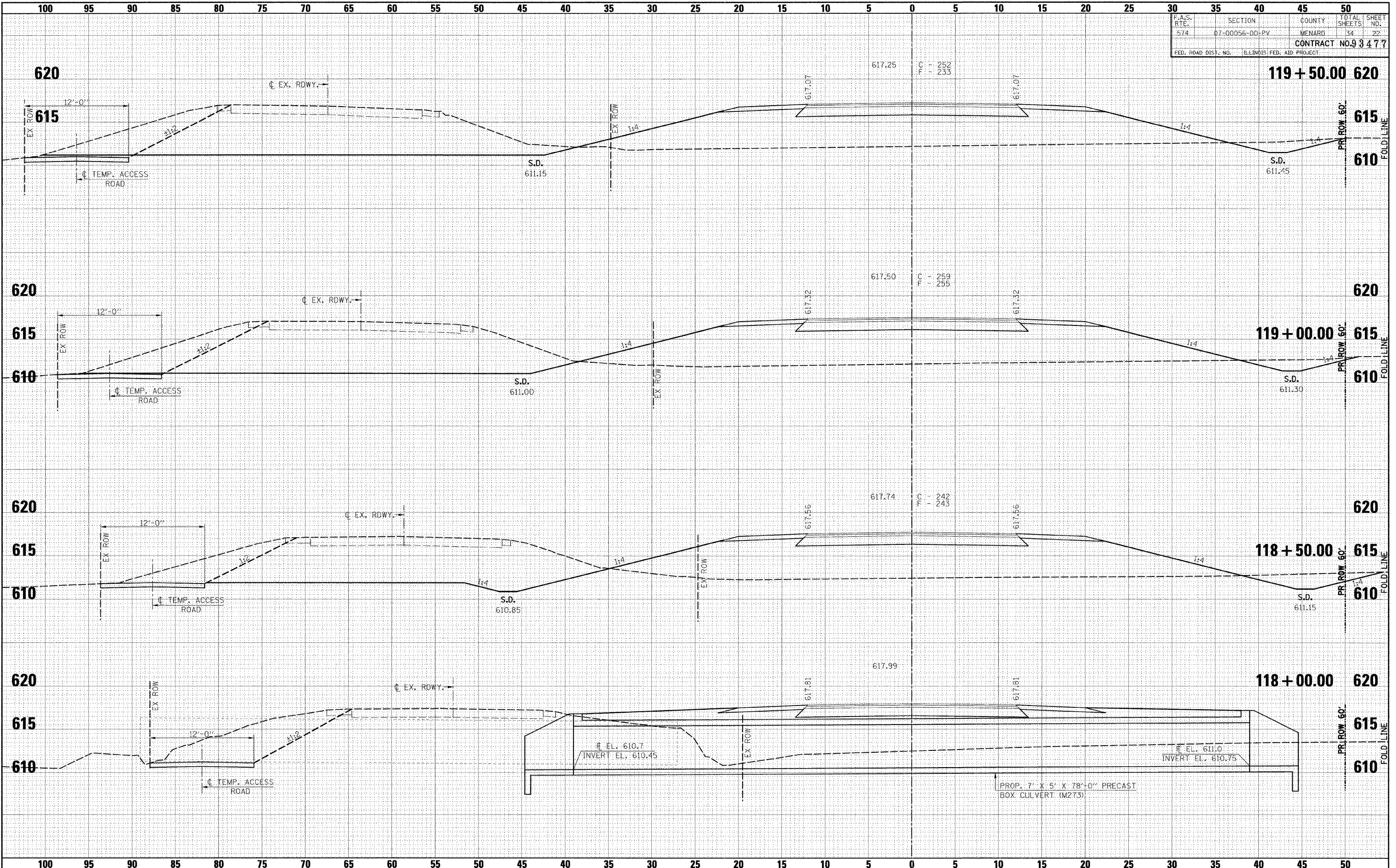


F.A.S. RTE.	SECTION	COUNTY	TOTAL SHEETS	SHEET NO.
574	07-00056-00-PV	MENARD	34	22
CONTRACT NO. 93477				
FED. ROAD DIST. NO. ILLINOIS FED. AID PROJECT				



DATE	BY
DATE	BY
DATE	BY
DATE	BY
DATE	BY

DATE	BY
DATE	BY
DATE	BY
DATE	BY
DATE	BY

FILE NAME =  
#FILE#

USER NAME = #KFR#  
PLOT SCALE = #SCALE#  
PLOT DATE = #DATE#

DESIGNED -  
DRAWN -  
CHECKED -  
DATE -

REVISED -  
REVISED -  
REVISED -  
REVISED -



**Allen Henderson & Associates, Inc.**  
Civil and Structural Engineers Springfield, IL.  
62703 Phone: (217)544-8033 IL Design Firm  
No. 184-001907

**CROSS SECTIONS**  
SCALE: SHEET NO. OF SHEETS STA. 118+00.00 TO STA. 119+50.00

F.A.S. RTE.	SECTION	COUNTY	TOTAL SHEETS	SHEET NO.
574	07-00056-00-PV	MENARD	34	22
CONTRACT NO.				
FED. ROAD DIST. NO. ILLINOIS FED. AID PROJECT				