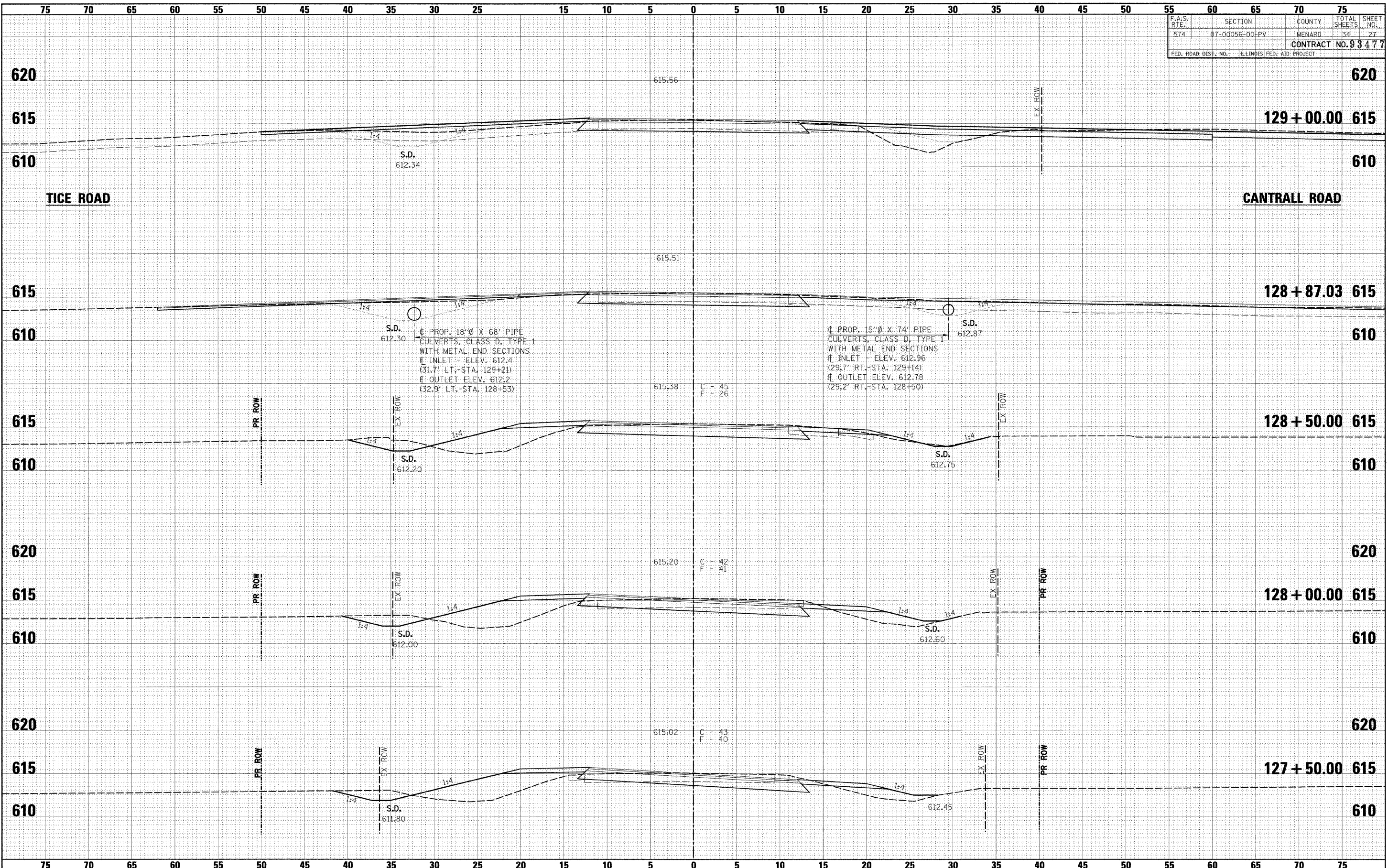


F.A.S. RTE.	SECTION	COUNTY	TOTAL SHEETS	SHEET NO.
574	07-00056-00-PV	MENARD	34	27
FED. ROAD DIST. NO.			ILLINOIS FED. AID PROJECT	
			CONTRACT NO. 93477	



DATE	BY
DATE	BY
DATE	BY

DATE	BY
DATE	BY
DATE	BY

FILE NAME -	USER NAME - #USER#
#FILE#	

DESIGNED -	REVISOR -
DRAWN -	REVISION -
CHECKED -	REVISION -
DATE -	REVISION -

PLOT SCALE = #SCALE#
PLOT DATE = #DATE#

**Allen Henderson & Associates, Inc.**  
 Civil and Structural Engineers Springfield, IL  
 62703 Phone: (217)544-8033 IL Design Firm  
 No. 184-001907

<b>CROSS SECTIONS</b>			
SCALE:	SHEET NO.	OF SHEETS	STA. 127+50.00 TO STA. 129+00.00

F.A.S. RTE.	SECTION	COUNTY	TOTAL SHEETS	SHEET NO.
574	07-00056-00-PV	MENARD	34	27
FED. ROAD DIST. NO.			ILLINOIS FED. AID PROJECT	
			CONTRACT NO.	