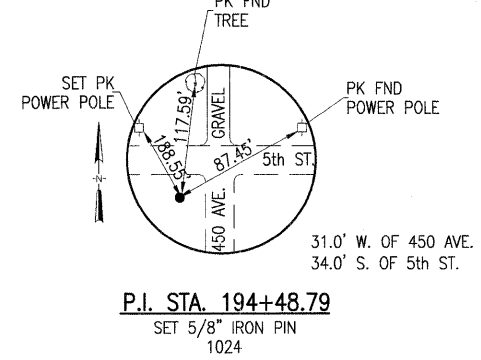
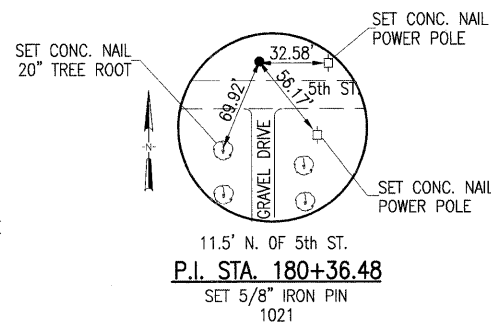
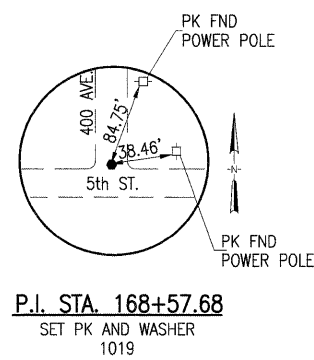
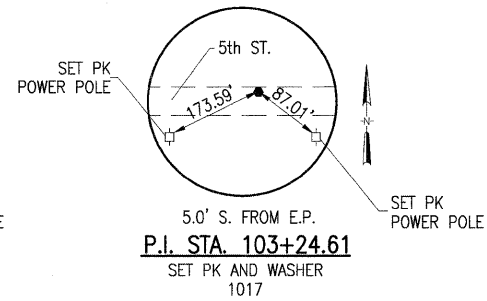
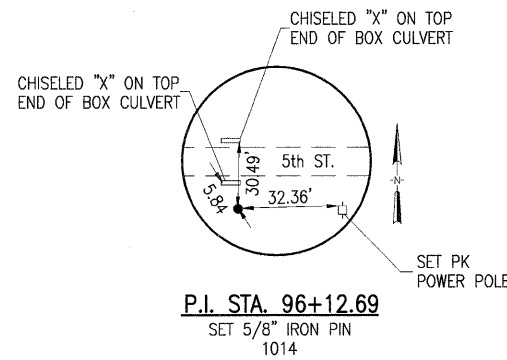


F.A.S. RTE.	SECTION	COUNTY	TOTAL SHEETS	SHEET NO.
569	07-00110-01-SP	LOGAN	26	4
PROJECT NO. HRR-0569(106)		CONTRACT NO.	93479	
FED. ROAD DIST. NO. -		ILLINOIS	FED. AID PROJECT	



CURVE #5
 1014 P.I. STA 96+12.69
 $\Delta = 1^{\circ}-59'-25''$ L
 $D\alpha = 00^{\circ}-29'-38''$
 $T = 201.48'$
 $R = 11600.00'$
 $L = 402.92'$
 $E = 1.75'$
 1013 P.C. STA 94+11.20
 1015 P.T. STA 98+14.13
 S.E. = NONE

CURVE #6
 1017 P.I. STA 103+24.61
 $\Delta = 1^{\circ}-54'-07''$ R
 $D\alpha = 00^{\circ}-28'-25''$
 $T = 200.84'$
 $R = 12100.00'$
 $L = 401.65'$
 $E = 1.67'$
 1016 P.C. STA 101+23.76
 1018 P.T. STA 105+25.42
 S.E. = NONE

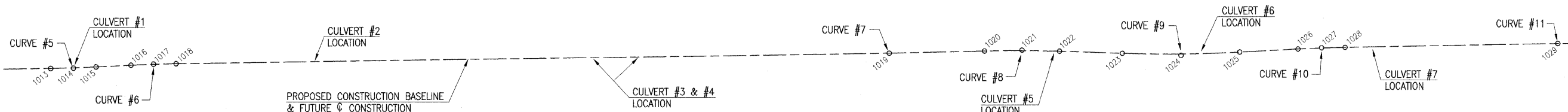
CURVE #7
 1019 P.I. STA 168+57.68
 NO CURVE
 $\Delta = 00^{\circ}-25'-25''$ L

CURVE #8
 1021 P.I. STA 180+36.48
 $\Delta = 3^{\circ}-18'-55''$ R
 $D\alpha = 00^{\circ}-29'-54''$
 $T = 332.80'$
 $R = 11500.00'$
 $L = 665.41'$
 $E = 4.81'$
 1020 P.C. STA 177+03.68
 1022 P.T. STA 183+69.09
 S.E. = NONE

CURVE #9
 1024 P.I. STA 194+48.79
 $\Delta = 5^{\circ}-11'-27''$ L
 $D\alpha = 00^{\circ}-29'-54''$
 $T = 521.30'$
 $R = 11500.00'$
 $L = 1041.88'$
 $E = 11.81'$
 1023 P.C. STA 189+27.50
 1025 P.T. STA 199+69.38
 S.E. = NONE

CURVE #10
 1027 P.I. STA 206+96.77
 $\Delta = 2^{\circ}-05'-06''$ R
 $D\alpha = 00^{\circ}-29'-54''$
 $T = 209.26'$
 $R = 11500.00'$
 $L = 418.48'$
 $E = 1.90'$
 1026 P.C. STA 204+87.50
 1028 P.T. STA 209+05.98
 S.E. = NONE

CURVE #11
 1029 P.I. STA 227+94.96
 NO CURVE
 $\Delta = 00^{\circ}-49'-14''$ R



CONTROL POINTS

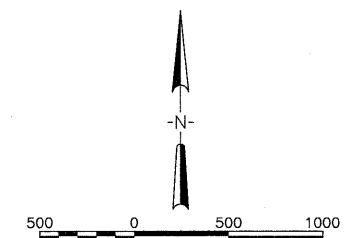
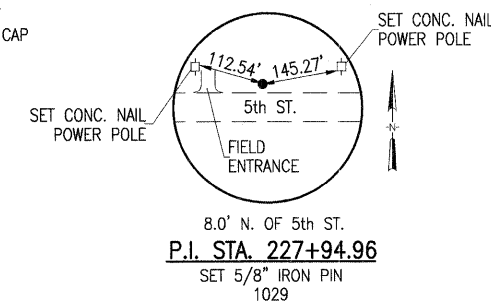
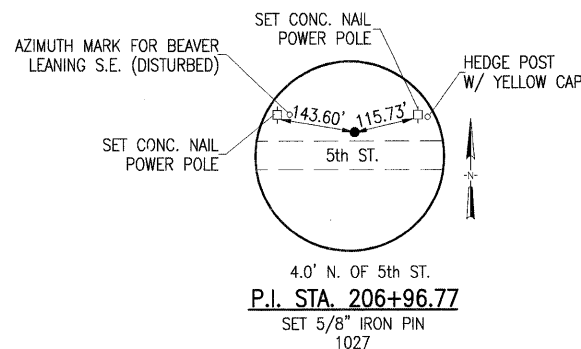
PT #	NORTH	EAST
1013	1266678.98	2469077.06
1014	1266681.62	2469278.52
1015	1266691.25	2469479.77
1016	1266706.05	2469789.05
1017	1266715.66	2469989.67
1018	1266718.60	2470190.49
1019	1266811.28	2476522.08
1020	1266829.91	2477367.87
1021	1266837.25	2477700.59
1022	1266825.32	2478033.17
1023	1266805.32	2478591.22
1024	1266786.65	2479112.19
1025	1266815.18	2479632.70
1026	1266843.54	2480150.05
1027	1266855.00	2480359.00
1028	1266858.85	2480568.23
1029	1266893.56	2482456.88

BENCHMARKS

- BENCHMARK #14 - SET RR SPIKE N FACE POWER POLE S SIDE 5th STREET ROAD. ELEV. 573.83 STA. 88+97.1, 8.8' RT.
- BENCHMARK #15 - SET RR SPIKE N FACE POWER POLE S SIDE 5th STREET ROAD. ELEV. 570.20 STA. 114+23.2, 32.7' RT.
- BENCHMARK #16 - CHISELED "I" TOP NE CORNER CONC. BOX CULVERT WALL IN SE QUADRANT OF 5th STREET ROAD & 350 AVE. ELEV. 574.24 STA. 142+36.7, 28.6' RT.
- BENCHMARK #18 - SET RR SPIKE S FACE POWER POLE NE QUADRANT 5th STREET ROAD & 450 AVE. ELEV. 572.00 STA. 195+04.2, 58.4' LT.

VERTICAL DATUM: NGVD 29

ILLINOIS STATE PLAN COORDINATE SYSTEM
 NAD 83 ILLINOIS WEST ZONE



LAYOUT: 6/30/08
 B.B. 7/30/08
 DRAWN: 7/30/08
 REVIEWED: 7/29/08
 AUG. 06, 2008 11:03 AM
 I:\074005\0740016\CADD\ROAD\SHEET C-101.GEO.DWG



DESIGNED -	REVISED -
DRAWN -	REVISED -
CHECKED -	REVISED -
DATE - 08-08-08	REVISED -

STATE OF ILLINOIS
 DEPARTMENT OF TRANSPORTATION

GEOMETRIC CONTROL
 5th STREET ROAD
 LOGAN COUNTY, ILLINOIS

SCALE: PAGE 1 OF 1 STA. TO STA.