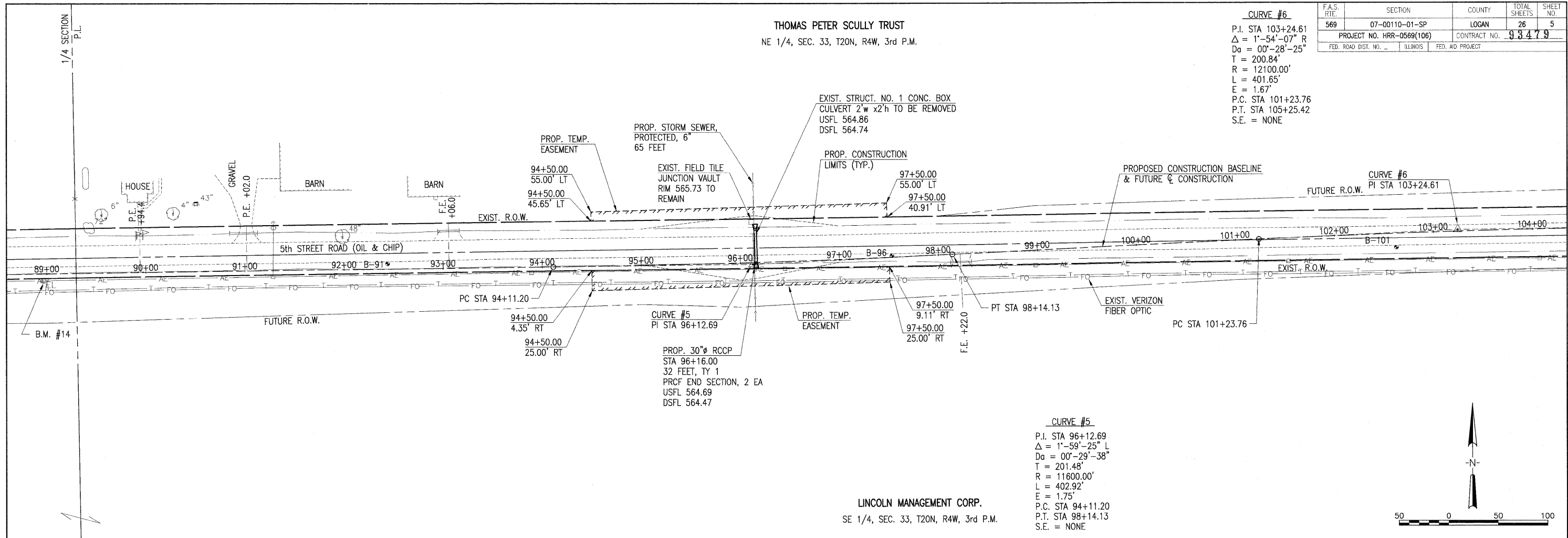


THOMAS PETER SCULLY TRUST
NE 1/4, SEC. 33, T20N, R4W, 3rd P.M.

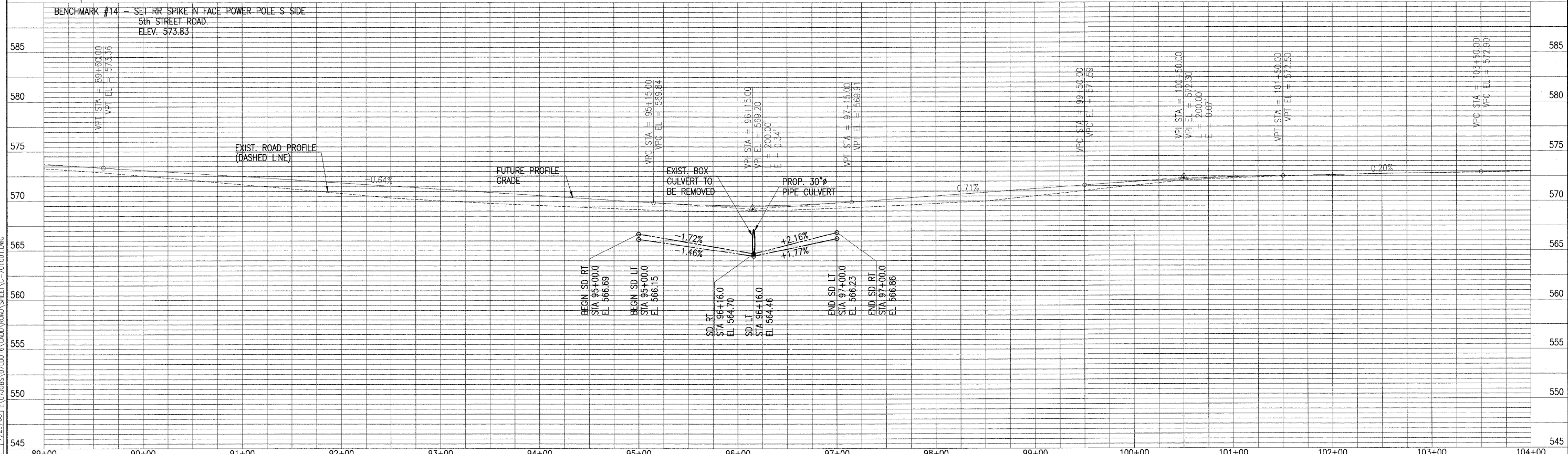
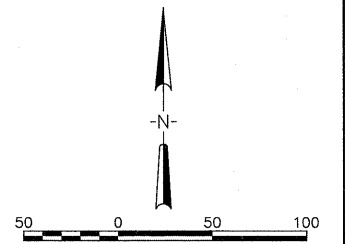
F.A.S. R/E.	SECTION	COUNTY	TOTAL SHEETS	SHEET NO.
569	07-00110-01-SP	LOGAN	26	5
PROJECT NO. HRR-0569(106)		CONTRACT NO. 93479		
FED. ROAD DIST. NO. -		ILLINOIS FED. AID PROJECT		

CURVE #6
P.I. STA 103+24.61
 $\Delta = 1^{\circ}-54'-07''$ R
 $D_a = 00^{\circ}-28'-25''$
T = 200.84'
R = 12100.00'
L = 401.65'
E = 1.67'
P.C. STA 101+23.76
P.T. STA 105+25.42
S.E. = NONE



CURVE #5
P.I. STA 96+12.69
 $\Delta = 1^{\circ}-59'-25''$ L
 $D_a = 00^{\circ}-29'-38''$
T = 201.48'
R = 11600.00'
L = 402.92'
E = 1.75'
P.C. STA 94+11.20
P.T. STA 98+14.13
S.E. = NONE

LINCOLN MANAGEMENT CORP.
SE 1/4, SEC. 33, T20N, R4W, 3rd P.M.



LAYOUT EJB 6/30/08
 DRAWN EJB 7/30/08
 REVIEWED LDK 7/29/08
 AUG 06, 2008 11:03 AM
 \072005\0710016\CADD\ROAD\SHHEET-C-701001.DWG

<p>Hanson Professional Services Inc. 1525 South Sixth Street, Springfield, IL 62703 Registration No. 164-001084 © Copyright Hanson Professional Services Inc. 2008</p>	DESIGNED - DRAWN - CHECKED - DATE - 08-08-08	REVISED - REVISED - REVISED - REVISED -	STATE OF ILLINOIS DEPARTMENT OF TRANSPORTATION	CULVERT NO. 1 PLAN & PROFILE 5th STREET ROAD LOGAN COUNTY, ILLINOIS	SCALE: 1"=50'H; 1"=5'V PAGE 1 OF 6 STA. 89+00.00 TO STA. 104+00.00
--	---	--	---	--	--