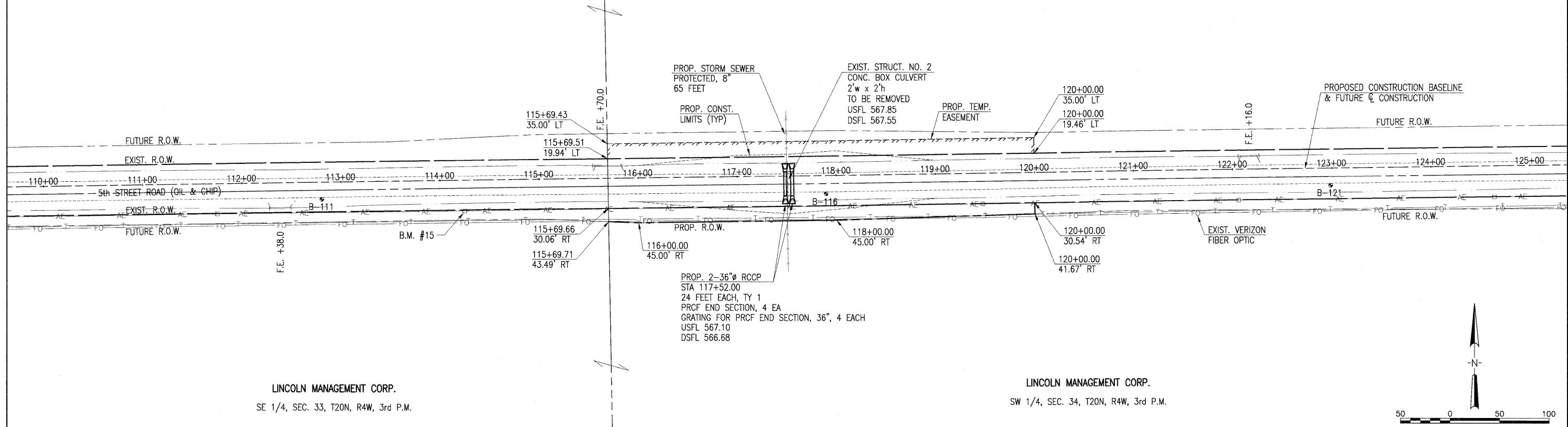


F.A.S. RTE.	SECTION	COUNTY	TOTAL SHEETS	SHEET NO.
569	07-00110-01-SP	LOGAN	26	6
PROJECT NO. HRR-0569(106)		CONTRACT NO. 93479		
FED. ROAD DIST. NO. _____		ILLINOIS FED. AID PROJECT		

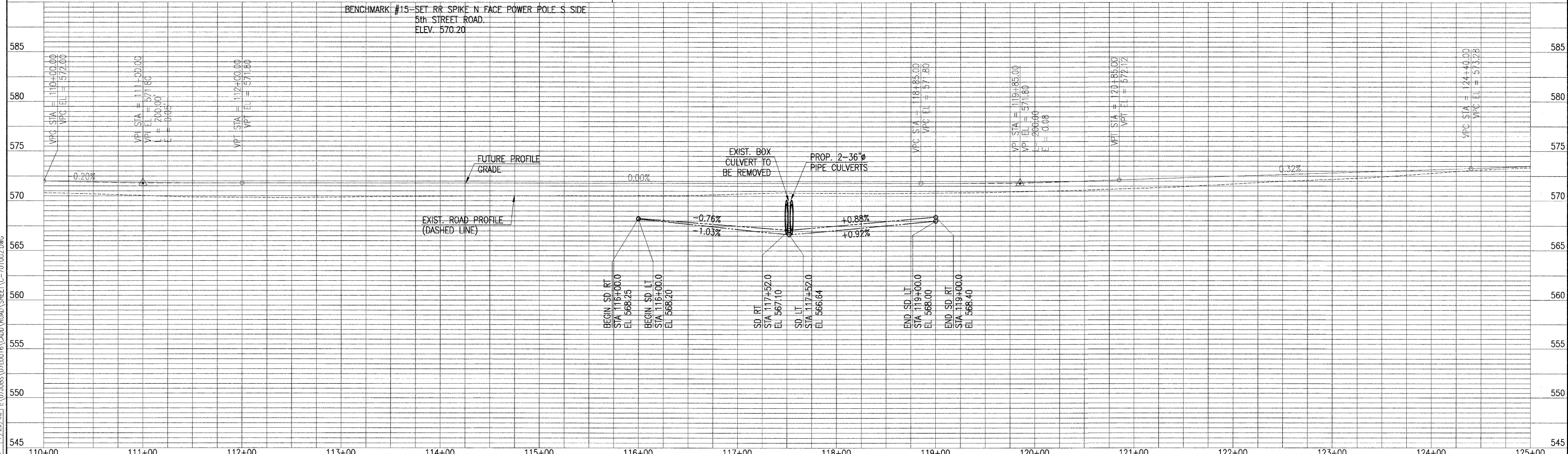
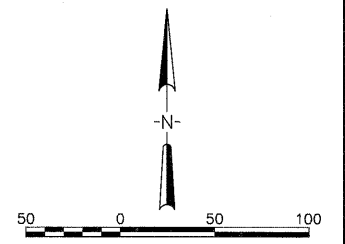
THOMAS PETER SCULLY TRUST
NE 1/4, SEC. 33, T20N, R4W, 3rd P.M.

THOMAS PETER SCULLY TRUST
NW 1/4, SEC. 34, T20N, R4W, 3rd P.M.



LINCOLN MANAGEMENT CORP.
SE 1/4, SEC. 33, T20N, R4W, 3rd P.M.

LINCOLN MANAGEMENT CORP.
SW 1/4, SEC. 34, T20N, R4W, 3rd P.M.



BENCHMARK #15-SET RR SPIKE N FACE POWER POLE S SIDE
5th STREET ROAD.
ELEV. 570.20

LAYOUT 6/30/08
DRAWN 7/30/08
REVIEWED 7/29/08

AUG 06, 2008 11:04 AM
H:\07\0885\0710016\CADD\ROAD\SHEET\C-701002.DWG

HANSON
Hanson Professional Services Inc.
1526 South Sixth Street, Springfield, IL 62703
Registration No. 194-001084
© Copyright Hanson Professional Services Inc. 2008

DESIGNED -	REVISED -
DRAWN -	REVISED -
CHECKED -	REVISED -
DATE - 08-08-08	REVISED -

STATE OF ILLINOIS
DEPARTMENT OF TRANSPORTATION

CULVERT NO. 2 PLAN & PROFILE
5th STREET ROAD
LOGAN COUNTY, ILLINOIS
SCALE: 1"=50'H; 1"=5'V
PAGE 2 OF 6
STA. 110+00.00 TO STA. 125+00.00