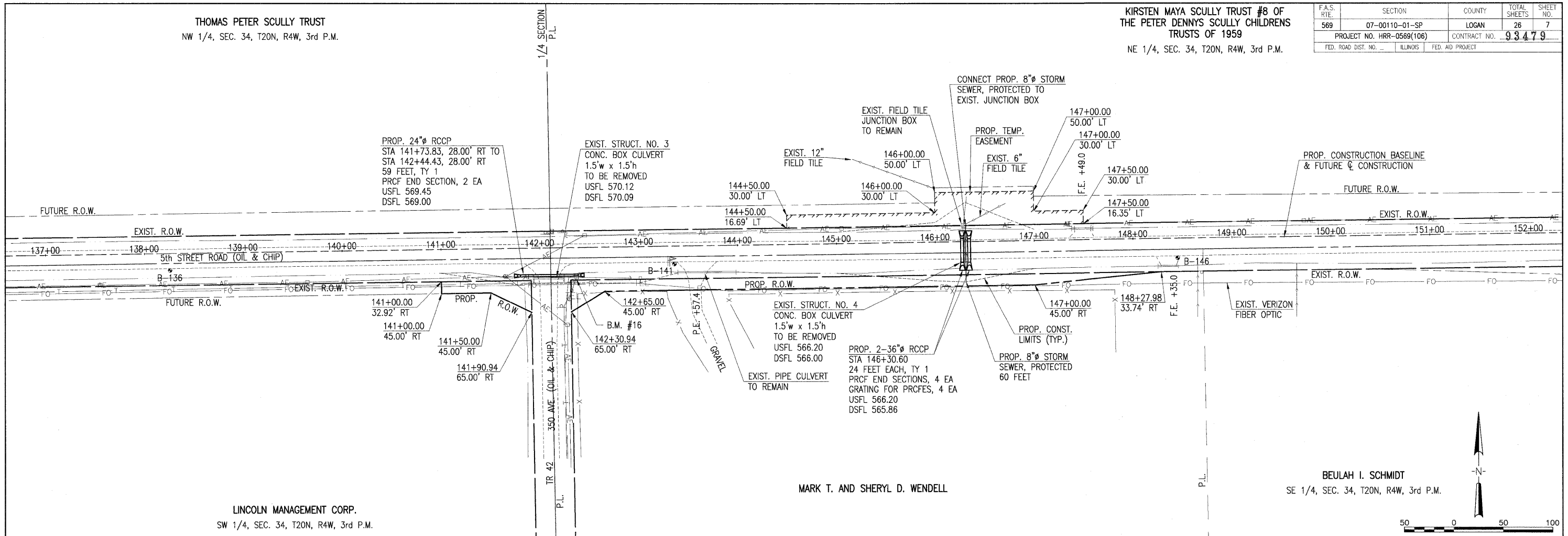


THOMAS PETER SCULLY TRUST
NW 1/4, SEC. 34, T20N, R4W, 3rd P.M.

KIRSTEN MAYA SCULLY TRUST #8 OF
THE PETER DENNY'S SCULLY CHILDRENS
TRUSTS OF 1959
NE 1/4, SEC. 34, T20N, R4W, 3rd P.M.

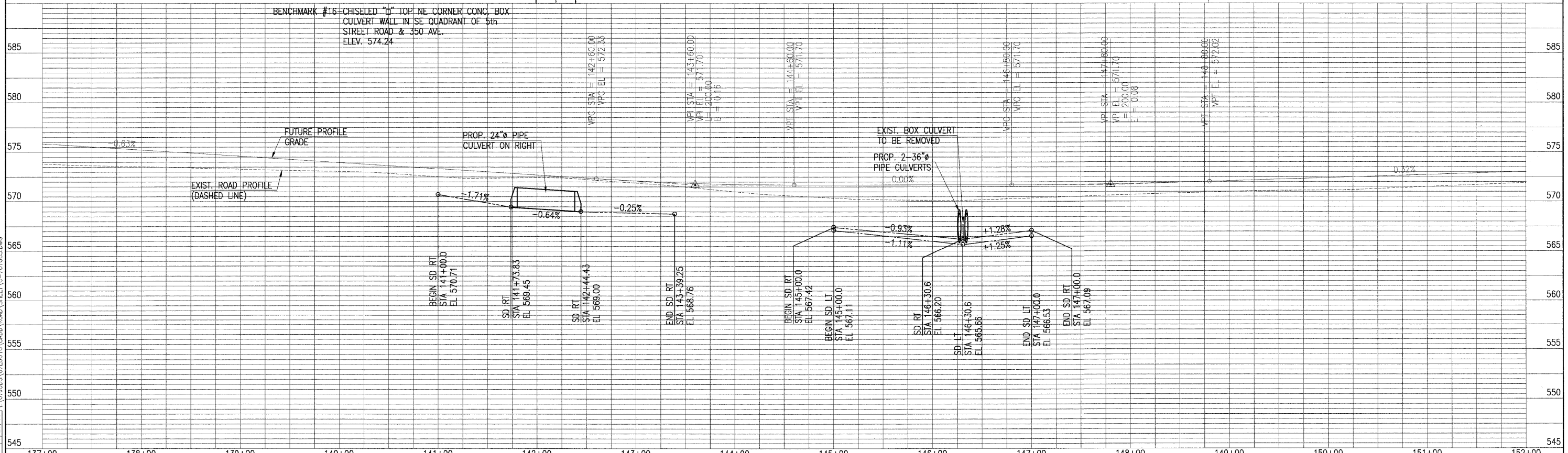
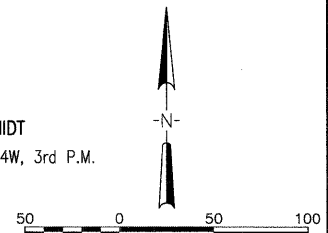
F.A.S. R/E	SECTION	COUNTY	TOTAL SHEETS	SHEET NO.
569	07-00110-01-SP	LOGAN	26	7
PROJECT NO. HRR-0569(106)		CONTRACT NO.	93479	
FED. ROAD DIST. NO. -		ILLINOIS	FED. AID PROJECT	



LINCOLN MANAGEMENT CORP.
SW 1/4, SEC. 34, T20N, R4W, 3rd P.M.

MARK T. AND SHERYL D. WENDELL

BEULAH I. SCHMIDT
SE 1/4, SEC. 34, T20N, R4W, 3rd P.M.



LAYOUT: 6/30/08
 B.B.: 7/30/08
 DRAWN: 7/30/08
 REVIEWED: 7/29/08
 AUG 06, 2008 11:04 AM
 C:\07\0685\07\0016\CADD\ROAD\SHHEET\0-701003.DWG

<p>HANSON Hanson Professional Services Inc. 1525 South Sixth Street, Springfield, IL 62703 Registration No. 184-01084 © Copyright Hanson Professional Services Inc. 2008</p>	DESIGNED - DRAWN - CHECKED - DATE - 08-08-08	REVISED - REVISED - REVISED - REVISED -	<p align="center">STATE OF ILLINOIS DEPARTMENT OF TRANSPORTATION</p>	<p align="center">CULVERT NO. 3 & CULVERT NO. 4 PLAN & PROFILE 5th STREET ROAD LOGAN COUNTY, ILLINOIS</p>	SCALE: 1"=50'H; 1"=5'V PAGE 3 OF 6 STA. 137+00.00 TO STA. 152+00.00
---	---	--	---	--	---