

WALLACE F. AND WILMA J. DAHMM
NE 1/4, SEC. 35, T20N, R4W, 3rd P.M.

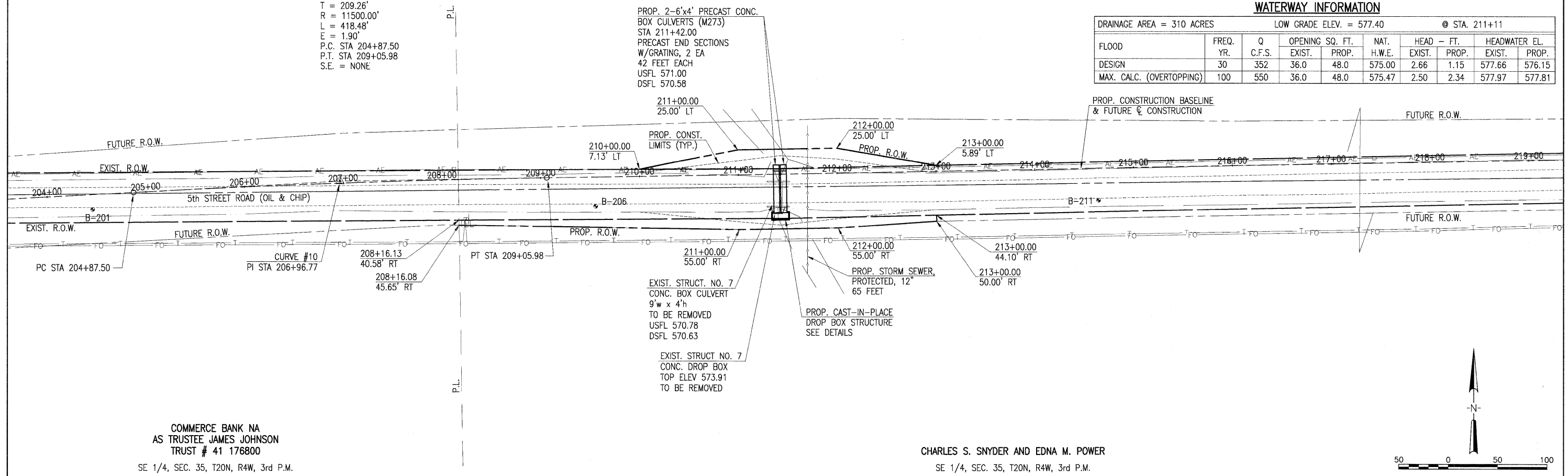
CURVE #10
P.I. STA 206+96.77
 $\Delta = 2^{\circ}-05'-06''$ R
 $D_a = 00^{\circ}-29'-54''$
T = 209.26'
R = 11500.00'
L = 418.48'
E = 1.90'
P.C. STA 204+87.50
P.T. STA 209+05.98
S.E. = NONE

CHARLES S. SNYDER AND EDNA M. POWER
NE 1/4, SEC. 35, T20N, R4W, 3rd P.M.

F.A.S. RTE.	SECTION	COUNTY	TOTAL SHEETS	SHEET NO.
569	07-00110-01-SP	LOGAN	26	10
PROJECT NO. HRR-0569(106)		CONTRACT NO. 93479		
FED. ROAD DIST. NO.	ILLINOIS	FED. AID PROJECT		

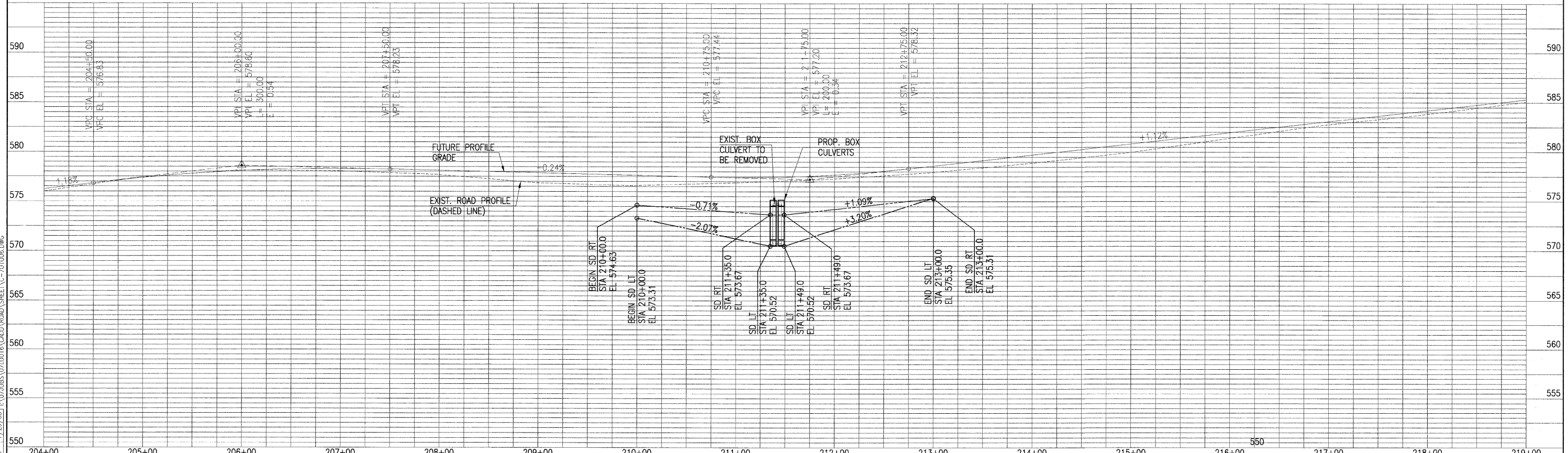
WATERWAY INFORMATION

DRAINAGE AREA = 310 ACRES		LOW GRADE ELEV. = 577.40		@ STA. 211+11		
FLOOD	FREQ. YR.	Q C.F.S.	OPENING SQ. FT.	NAT. H.W.E.	HEAD - FT.	HEADWATER EL.
DESIGN	30	352	36.0	575.00	2.66	577.66
MAX. CALC. (OVERTOPPING)	100	550	36.0	575.47	2.50	577.97
			48.0	575.47	2.34	577.81



COMMERCE BANK NA
AS TRUSTEE JAMES JOHNSON
TRUST # 41 176800
SE 1/4, SEC. 35, T20N, R4W, 3rd P.M.

CHARLES S. SNYDER AND EDNA M. POWER
SE 1/4, SEC. 35, T20N, R4W, 3rd P.M.



LAYOUT: 6/30/08
DRAWN: 7/30/08
REVIEWED: 7/29/08
AUG 06, 2008 11:05 AM
\\072005\0710016\CADD\ROAD\SHEET\0-701006.DWG