

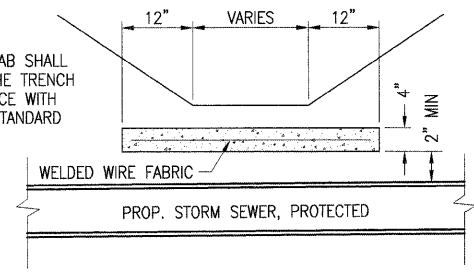
NOTE: DIAMETER OF PROP. STORM SEWER SHALL BE EQUAL TO OR GREATER THAN EXIST. FIELD TILE

STORM SEWER, PROTECTED

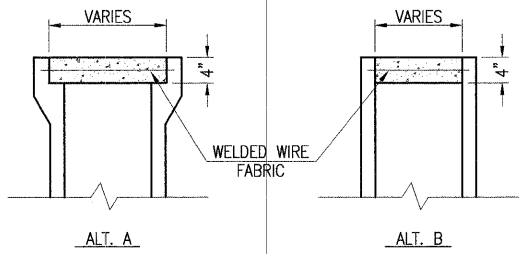
FIELD TILE ADJUSTMENT NOTES

1. LOCATION OF THE EXPLORATION TRENCH, 52" DEPTH SHALL BE AS DIRECTED BY THE ENGINEER TO LOCATE EXISTING FIELD TILE DRAINS.
2. WELDED WIRE FABRIC SHALL BE 6"x6" MESH, #4 GAUGE, 58 POUNDS PER 100 SQUARE FEET, CONFORMING TO THE REQUIREMENTS OF A.S.T.M. A158. THE COST FOR FURNISHING AND PLACING THE WELDED WIRE FABRIC AND CONCRETE SLAB SHALL BE INCLUDED IN THE CONTRACT UNIT PRICE PER FOOT FOR STORM SEWER, PROTECTED.
3. THE RODENT BAR GUARDS SHALL BE INSTALLED WITH A HINGE AND BOLT THROUGH THE TOP OF THE PIPE AND POSITIONED WITHIN THE PIPE TO ALLOW THE BAR GUARD TO FULLY SWIVEL WITHOUT EXPOSING THE BARS BEYOND THE END OF THE PIPE. THE RODENT BAR GUARD SHALL MEET THE APPROVAL OF THE ENGINEER PRIOR TO PLACEMENT.
4. LOCATIONS OF ALL EXISTING FIELD TILES ARE UNKNOWN. THE KNOWN TILE LOCATIONS HAVE BEEN INDICATED ON THE PLANS. ANY ADDITIONAL FIELD TILE ENCOUNTERED DURING CONSTRUCTION WILL BE PAID FOR AT THE CONTRACT UNIT PRICE PER EACH FOR FIELD TILE ADJUSTMENT. ALL FIELD TILE ADJUSTMENT SHALL BE DONE IN ACCORDANCE WITH SECTION 611 OF THE STANDARD SPECIFICATIONS FOR ROAD AND BRIDGE CONSTRUCTION.
5. THE CONCRETE HEADWALL, EXCELSIOR BLANKET, RODENT BAR GUARD AND ADDITIONAL HARDWARE SHOWN SHALL BE INCLUDED IN THE COST FOR THIS WORK. ALL EXISTING FIELD TILE THAT WILL REMAIN AND BE ABANDONED SHALL BE BLOCKED WITH MASONRY OR CRUSHED AS DIRECTED BY THE ENGINEER OR REMOVED WHEN NECESSARY FOR CONSTRUCTION. THE COST OF SUCH WORK SHALL BE INCLUDED IN THE CONTRACT UNIT PRICE PER EACH FOR FIELD TILE ADJUSTMENT. SEE SPECIAL PROVISIONS.
6. ANY EXISTING TILE THAT IS DAMAGED BY THE CONTRACTOR SHALL BE REPAIRED TO THE SATISFACTION OF THE ENGINEER AT THE CONTRACTOR'S EXPENSE.
7. ALL EXISTING FIELD TILE SHALL BE REPLACED WITH STORM SEWER OF THE TYPE REQUIRED FOR THE DEPTH OF COVER. THE 6", 8", 10" OR 12" STORM SEWER SHALL BE PAID FOR AT THE CONTRACT UNIT PRICE PER FOOT FOR STORM SEWER SPECIAL OR STORM SEWER, PROTECTED REGARDLESS OF DEPTH. THE FOOT MEASUREMENT SHALL BE MADE ALONG THE CENTROIDAL AXIS AND THIS PRICE SHALL INCLUDE ALL BENDS, ELBOWS, OR PIPE "T" WHICH ARE REQUIRED.
8. REINFORCED CONCRETE LID SHALL BE MISCELLANEOUS CONCRETE OR PRECAST REINFORCED CONCRETE AND THE COST OF SUCH SHALL BE INCLUDED WITH THE CONTRACT UNIT PRICE FOR STORM SEWER, PROTECTED.
9. ALL EXISTING FIELD TILE THAT WILL BE ABANDONED SHALL BE BLOCKED WITH MASONRY OR CRUSHED AS SHOWN ON THE PLANS OR AS DIRECTED BY THE ENGINEER, OR REMOVED WHERE NECESSARY FOR OTHER CONSTRUCTION. THE COST OF SUCH WORK SHALL BE INCLUDED WITH THE COST OF FIELD TILE ADJUSTMENT.
10. FIELD TILE JUNCTION VAULTS SHALL BE CONSTRUCTED IN ACCORDANCE WITH SECTION 602 OF THE STANDARD SPECIFICATIONS. EXCAVATION, BEDDING AND BACKFILL SHALL BE INCLUDED IN THE CONTRACT UNIT PRICE, PER EACH FOR FIELD TILE JUNCTION VAULTS, 2' DIA.

WIDTH OF CONC. SLAB SHALL BE THE SAME AS THE TRENCH WIDTH IN ACCORDANCE WITH SEC. 611 OF THE STANDARD SPECIFICATIONS

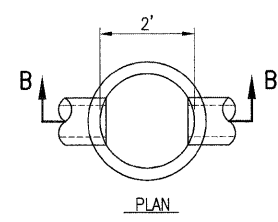


DETAIL "A"



REINFORCED CONCRETE LID DETAIL

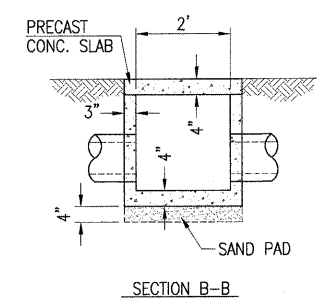
DIMENSIONS WILL VARY TO MATCH NOMINAL SIZE OF PROPOSED STORM SEWER



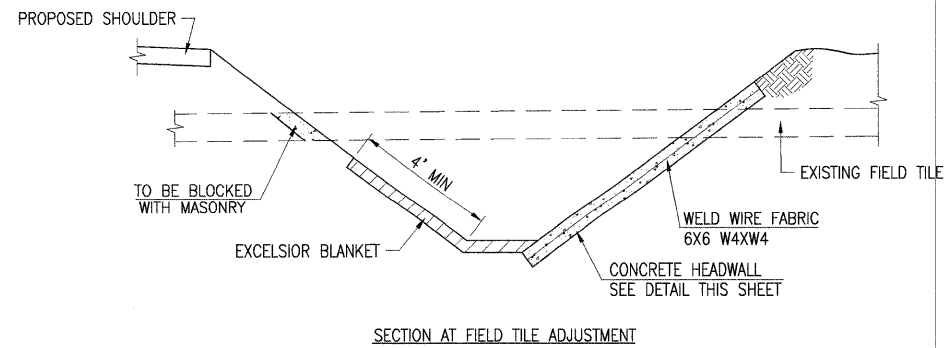
PLAN

THE ENTIRE STRUCTURE INCLUDING LID AND SAND PAD SHALL BE PAID FOR AT THE CONTRACT UNIT PRICE FOR FIELD TILE JUNCTION VAULT, 2' DIA.

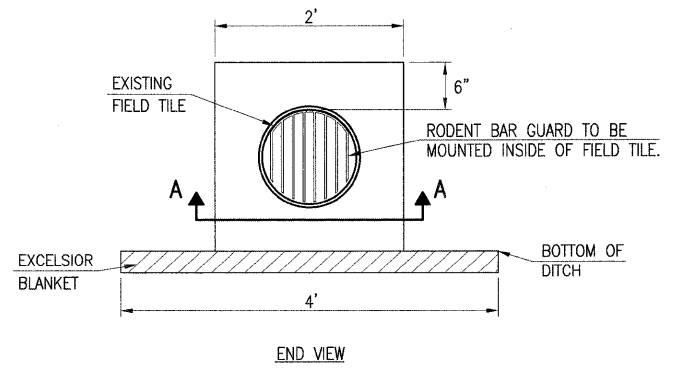
FIELD TILE JUNCTION VAULT DETAIL



SECTION B-B

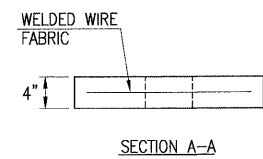


SECTION AT FIELD TILE ADJUSTMENT



END VIEW

FIELD TILE CONCRETE HEADWALL DETAIL



SECTION A-A

FIELD TILE ADJUSTMENT DETAILS

LAYOUT 6/20/08
 DRAWN 7/30/08
 REVIEWED LDK 7/29/08
 AUG 06, 2008 11:08 AM
 \A\070085\0710016\CAUD\ROAD\ROAD\SHEET\C-50504ET.DWG

HANSON
 Hanson Professional Services Inc.
 1525 South Sixth Street, Springfield, IL 62703
 Registration No. 184-001084
 © Copyright Hanson Professional Services Inc. 2008

DESIGNED	-	REVISED	-
DRAWN	-	REVISED	-
CHECKED	-	REVISED	-
DATE	08-08-08	REVISED	-

STATE OF ILLINOIS
 DEPARTMENT OF TRANSPORTATION

FIELD TILE ADJUSTMENT DETAILS			
5th STREET ROAD			
LOGAN COUNTY, ILLINOIS			
SCALE:	PAGE 5 OF 5	STA.	TO STA.