

ROUTE NO.	SECTION	COUNTY	TOTAL SHEETS	SHEET NO.
1539		MACON	57	1

PROJECT: 00-00155-00-BR

**INDEX OF SHEETS**

NO.	TITLE
1	COVER SHEET, INDEX OF SHEETS & LOCATION MAP
2	DETAILS, GENERAL NOTES & SUMMARY OF QUANTITIES
3	PLAN AND PROFILE
4	GENERAL PLAN AND ELEVATION
5	GENERAL NOTES AND BILL OF MATERIAL
6	DECK ELEVATION LAYOUT
7	DECK ELEVATIONS
8	DECK ELEVATIONS
9	SOUTH APPROACH ELEVATIONS
10	NORTH APPROACH ELEVATIONS
11	DECK PLAN AND CROSS SECTION - UNIT 1
12	DECK PLAN AND CROSS SECTION - UNIT 2
13	SUPERSTRUCTURE DETAILS
14	STRIP SEAL JOINT DETAILS
15	FINGER PLATE DETAILS AT PIER 4
16	FINGER PLATE DETAILS AT PIER 4
17	FINGER PLATE DETAILS AT PIER 4
18	STRUCTURAL STEEL DETAILS AND MOMENT TABLES
19	STRUCTURAL STEEL REPAIR DETAILS - UNIT 1
20	STRUCTURAL STEEL REPAIR DETAILS - UNIT 1
21	STRUCTURAL STEEL REPAIR DETAILS - UNIT 2
22	ELASTOMERIC BEARING DETAILS
23	ELASTOMERIC BEARING DETAILS
24	ELASTOMERIC BEARING DETAILS
25	ELASTOMERIC BEARING DETAILS
26	ELASTOMERIC BEARING DETAILS
27	ABUTMENT CONCRETE REMOVAL
28	SOUTH ABUTMENT
29	SOUTH ABUTMENT DETAILS
30	NORTH ABUTMENT
31	NORTH ABUTMENT DETAILS
32	PIER REPAIR DETAILS
33	BAR SPLICER ASSEMBLY DETAILS
34-57	EXISTING BRIDGE PLANS

**STANDARDS**

000001-05	STANDARD SYMBOLS, ABBREVIATIONS, AND PATTERNS
001001-02	AREAS OF REINFORCEMENT BARS
001006	DECIMAL OF AN INCH AND OF A FOOT
420401-07	BRIDGE APPROACH PAVEMENT
515001-03	NAME PLATE FOR BRIDGES
630001-08	STEEL PLATE BEAM GUARDRAIL
631031-07	TRAFFIC BARRIER TERMINAL TYPE 6
635011-02	REFLECTOR MARKER & MOUNTING DETAILS
701901-01	TRAFFIC CONTROL DEVICES
780001-02	TYPICAL PAVEMENT MARKINGS
BLR21-8	TYPICAL APPLICATION OF TRAFFIC CONTROL DEVICES FOR CONSTRUCTION ON RURAL LOCAL HIGHWAYS

FULL SIZE PLANS HAVE BEEN PREPARED USING STANDARD ENGINEERING SCALES. REDUCED SIZED PLANS WILL NOT CONFORM TO STANDARD SCALES. IN MAKING MEASUREMENTS ON REDUCED PLANS, THE ABOVE SCALES MAY BE USED.

J.U.L.I.E.  
JOINT UTILITY LOCATION INFORMATION FOR EXCAVATION  
1-800-892-0123

HLC PROJ. 4698

STATE OF ILLINOIS  
DEPARTMENT OF TRANSPORTATION  
DIVISION OF HIGHWAYS

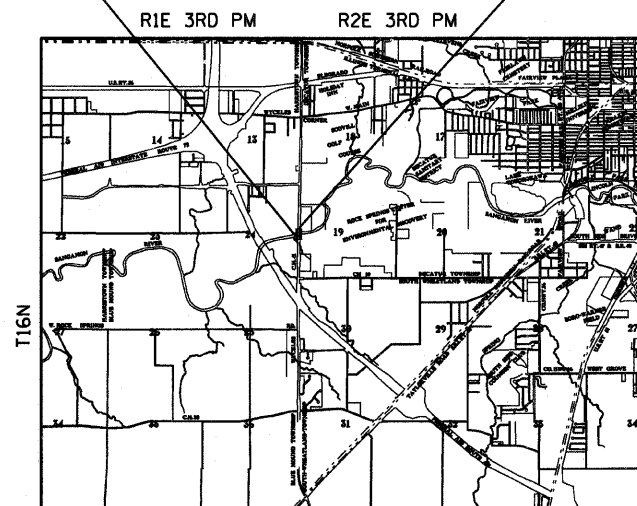
**PLANS FOR PROPOSED  
BRIDGE DECK REPLACEMENT  
& REHABILITATION PROJECT**

TO BE CONSTRUCTED UNDER THE PROVISIONS OF THE ILLINOIS HIGHWAY CODE

**F.A.S. ROUTE 1539  
SEC. 00-00155-00-BR  
PROJECT NO. BHS-1539 (105)  
MACON COUNTY  
C-97-052-09**

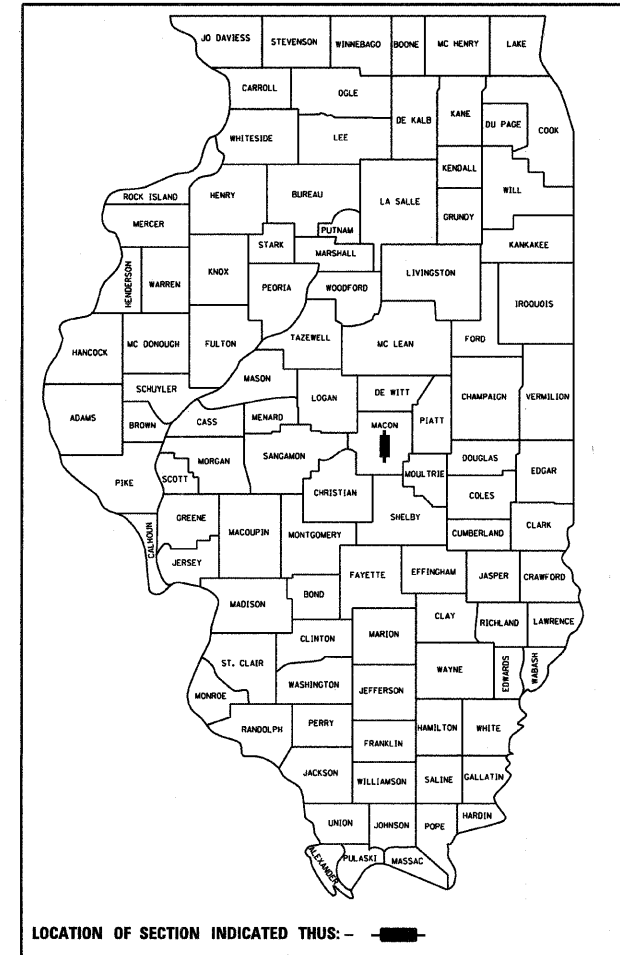
PROPOSED SEC 00-00155-00-BR  
BEGINS STA 26+59.19

PROPOSED SEC 00-00155-00-BR  
END STA 34+40.34

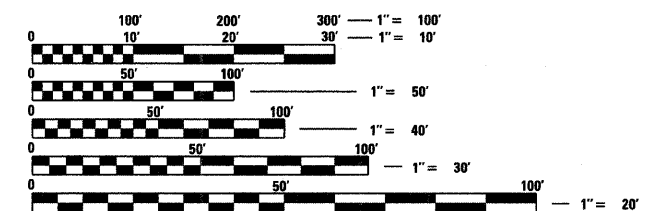


**LOCATION MAP**

NET LENGTH OF SECTION = 781.15 FEET = 0.148 MILES



FUNCTIONAL CLASSIFICATION - ARTERIAL  
2008 ADT = 2100  
2028 ADT = 2500  
DESIGN SPEED = 65 MPH



PROFESSIONAL ENGINEER  
JEREMY M. BUENING  
092-080325  
STATE OF ILLINOIS  
1-26-09  
Expires 11-30-09

APPROVED January 26 20 09  
[Signature]  
COUNTY ENGINEER

PASSED 2/5/09  
Maureen Kasel 20  
DISTRICT SEVEN ENGINEER OF  
LOCAL ROADS AND STREETS

Releasing For  
Bid Based on  
Limited Review 2/5 20 09  
Roger L. Dinkel  
DEPUTY DIRECTOR OF HIGHWAYS  
REGION FOUR ENGINEER

STATE OF ILLINOIS  
DEPARTMENT OF TRANSPORTATION

HOMER L.  
CHASTAIN  
& ASSOCIATES, LLP  
CONSULTING ENGINEERS  
DECATUR (317) 422-8544  
CHICAGO (773) 714-0050  
ROCKFORD (815) 489-0050  
184-001397