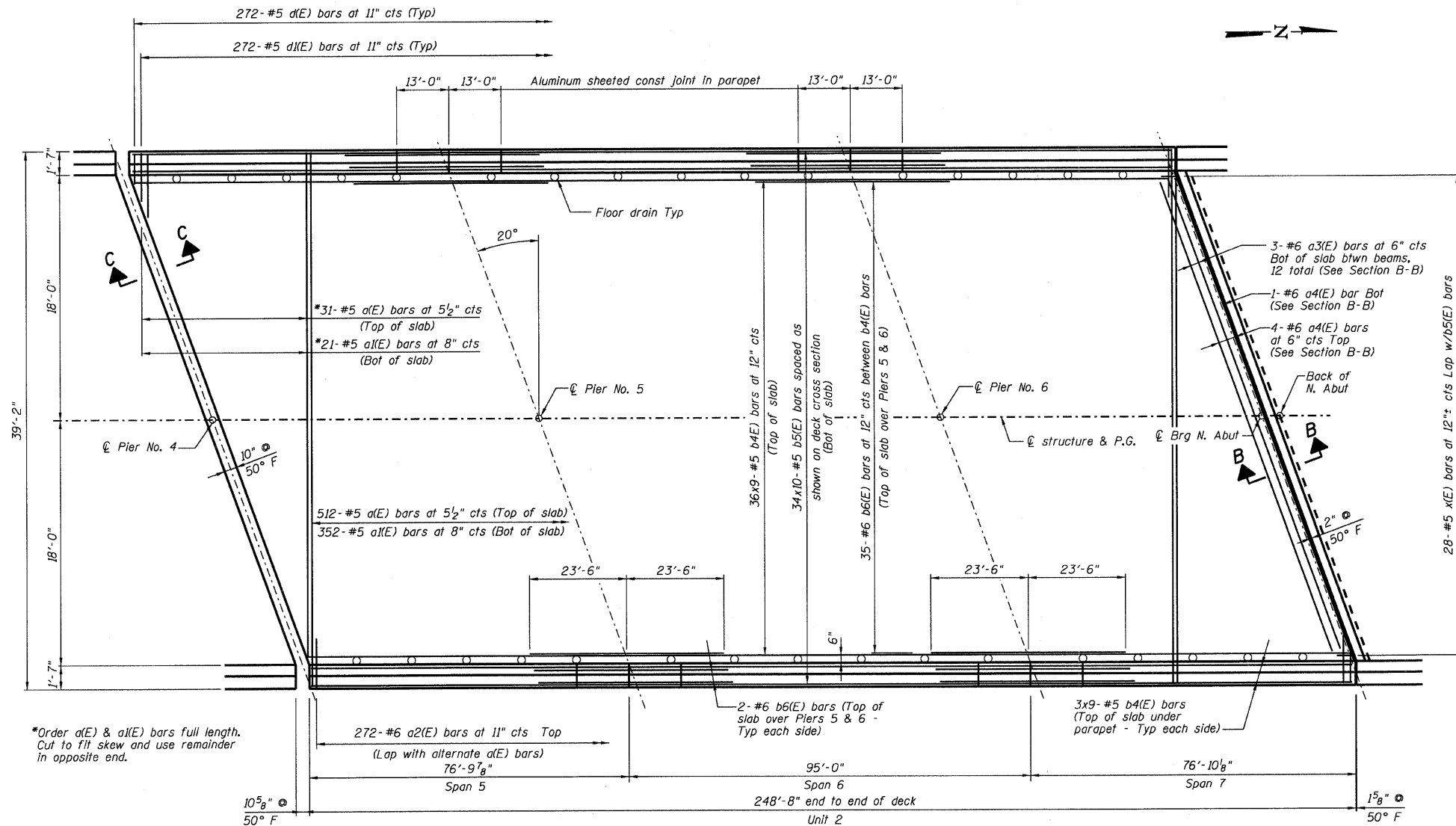


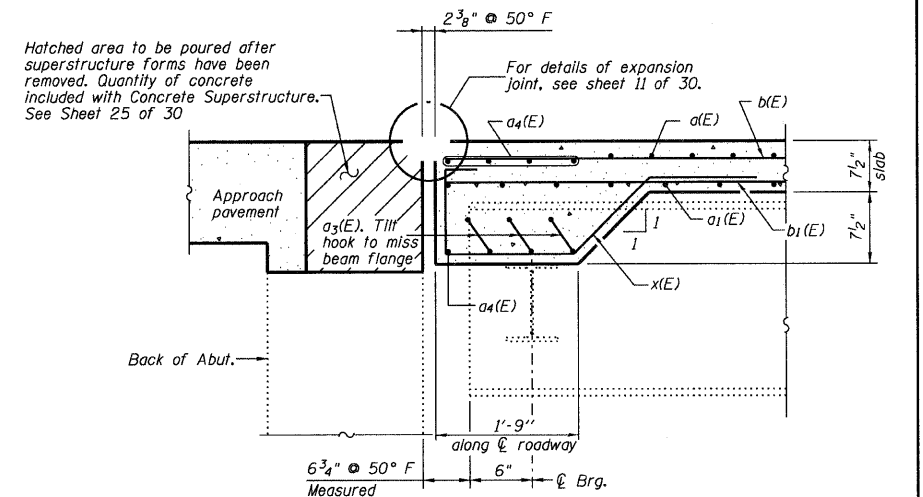
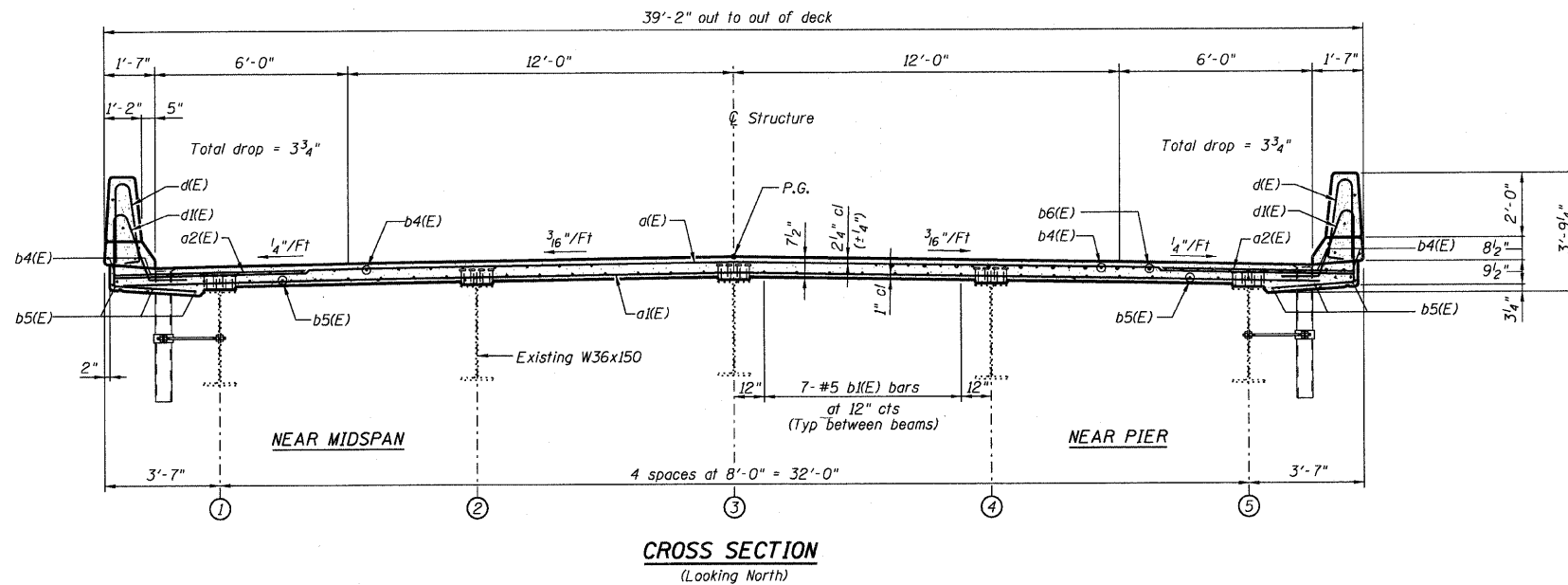
ROUTE NO.	SECTION	COUNTY	TOTAL SHEETS	SHEET NO.
FAS 1539		MACON	57	12
FEDERAL DIST. NO.	ILLINOIS	PROJECT		

•00-00155-00-BR

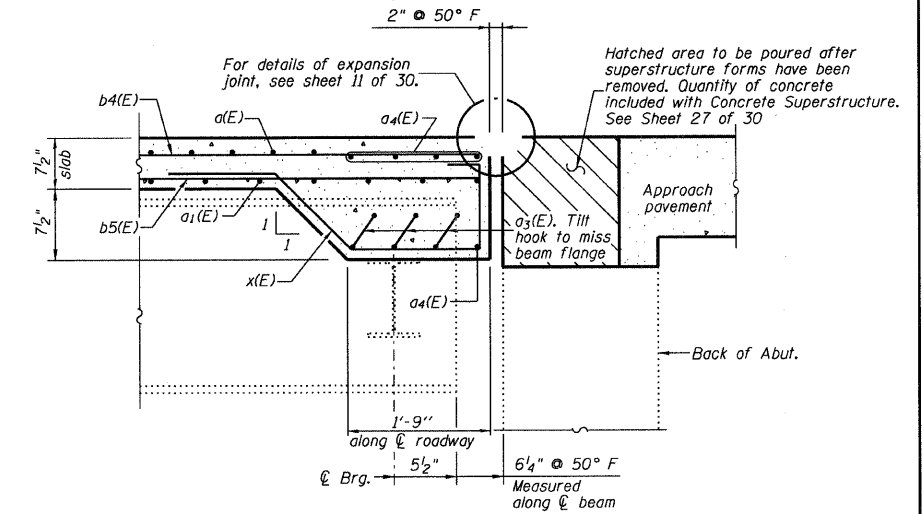


*Order a(E) & a(E) bars full length. Cut to fit skew and use remainder in opposite end.

MIN BAR LAP
#5 bar = 1'-8"



*Edge beams shall be placed from fascia beam to fascia beam and not on overhangs of the structure



Notes:
See Sheet 10 of 30 for parapet reinforcement, superstructure details and Bill of Material.
Reinforcement bars designated (E) shall be epoxy coated.
Bars indicated thus 3x10 etc indicates 3 lines of bars with 10 lengths per line.
For floor drain spacing see sheet 1 of 30.
For Sec C-C see Sheet 12 of 30.

WYCKLES ROAD OVER THE SANGAMON RIVER
DECK PLAN AND CROSS SECTION - UNIT 2

REVISIONS	FAS 1539	SECTION 00-00155-00-BR	DRAWN BY DATE
1	DATE INITIALS	STA 30+50.00	R KING 9/08
2		SN 058-3030	CHECKED BY DATE
3		MACON COUNTY	JME 9/08
4			BOOK NUMBER
5			PROJECT NO.
6			4698
7			SHEET NO.
8			
9			
10			

HOMER L. CHASTAIN & ASSOCIATES, LLP
CONSULTING ENGINEERS
184-001297

DECATUR CHICAGO
(317) 422-8544 (773) 714-0050

ROCKFORD
(815) 489-0050