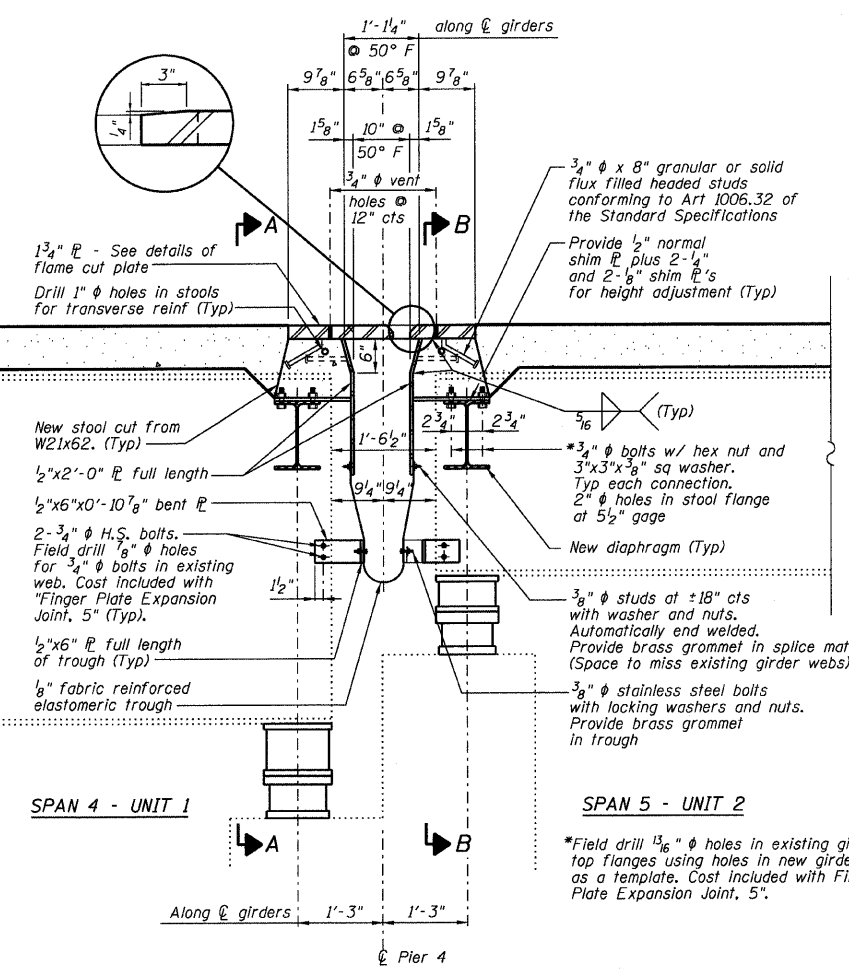


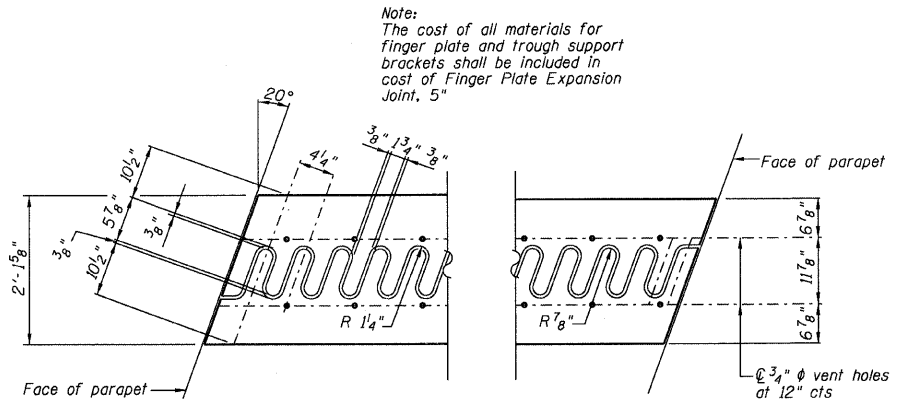
Sheet No 12  
of 30 Sheets

| ROUTE NO.           | SECTION | COUNTY | TOTAL SHEETS | SHEET NO. |
|---------------------|---------|--------|--------------|-----------|
| FAS 1539            |         | MACON  | 57           | 15        |
| FED. ROAD DIST. NO. |         | KLINDS | PROJECT      |           |

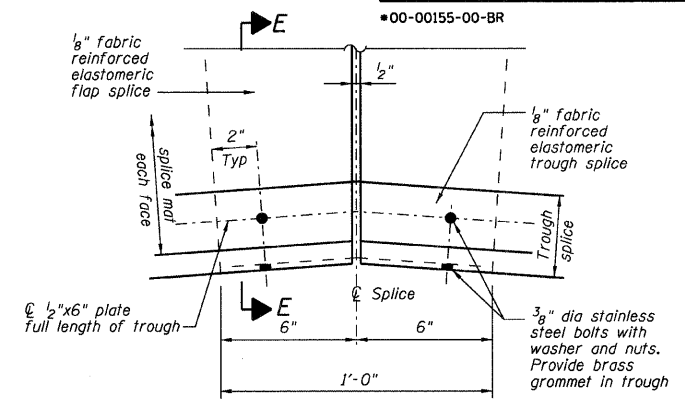
00-00155-00-BR



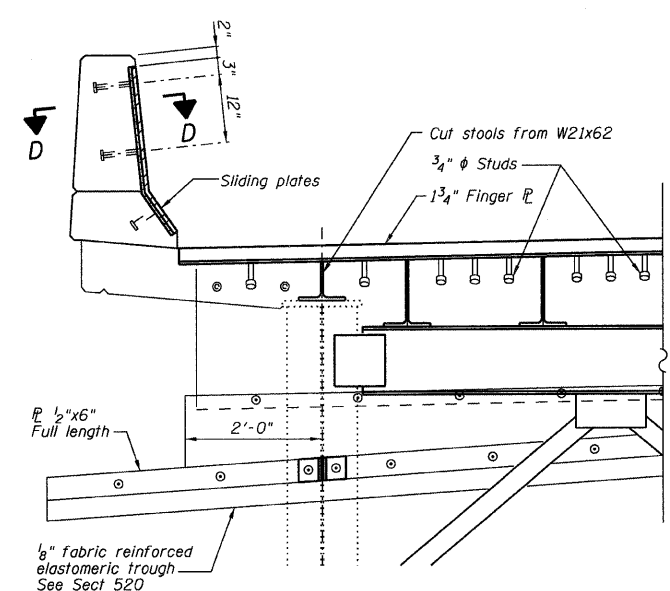
SECTION C-C



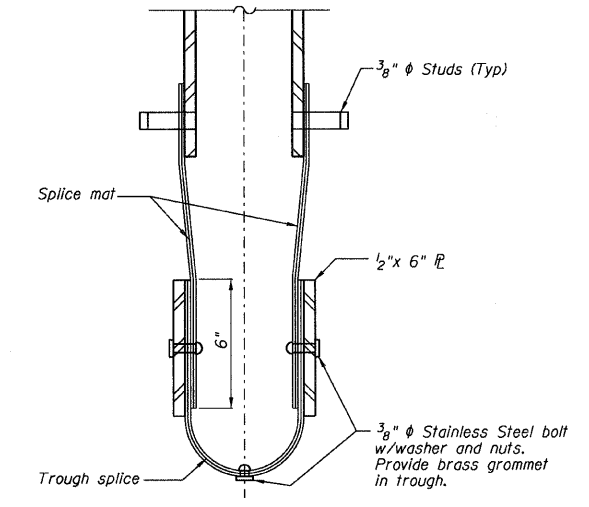
FLAME CUTTING DIAGRAM  
(Proposed Finger Plate - Cut from 1 3/4" x 2'-1 5/8" PL (M270, Grade 50))



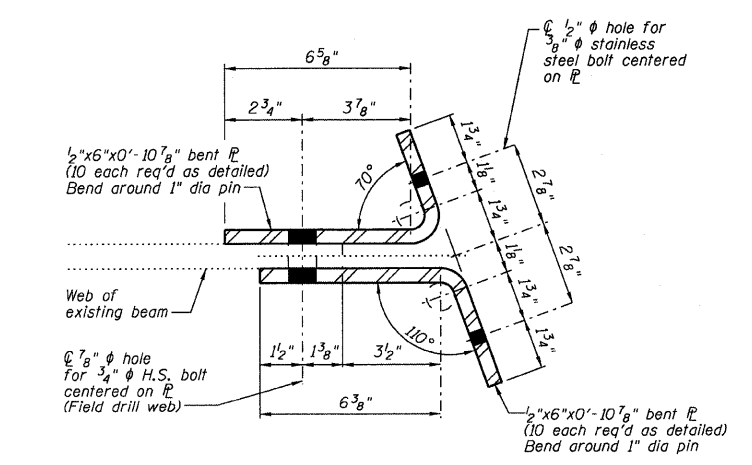
SIDE VIEW



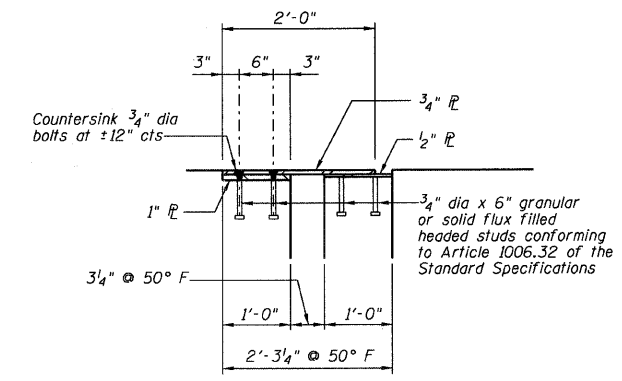
TYPICAL SECTION THRU PARAPET



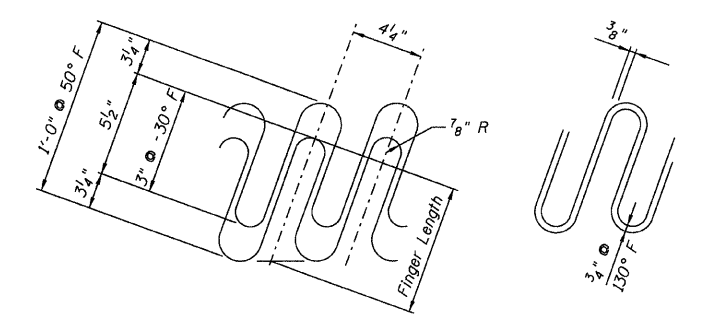
SECTION E-E



DETAILS OF CONNECTOR PLATES  
FOR NEOPRENE TROUGH



SECTION D-D



JOINT OPENING AND GEOMETRY DETAIL

WYCKLES ROAD OVER THE SANGAMON RIVER  
FINGER PLATE DETAILS AT PIER 4

|           |          |                        |                              |
|-----------|----------|------------------------|------------------------------|
| REVISIONS | FAS 1539 | SECTION 00-00155-00-BR | DRAWN BY DATE<br>R KING 9/08 |
| 1         |          | SN 058-3030            | CHECKED BY DATE<br>JMB 9/08  |
| 2         |          | MACON COUNTY           | BOOK NUMBER                  |
| 3         |          |                        | PROJECT No.                  |
| 4         |          |                        | 4698                         |
| 5         |          |                        | SHEET No.                    |
| 6         |          |                        |                              |
| 7         |          |                        |                              |
| 8         |          |                        |                              |
| 9         |          |                        |                              |
| 10        |          |                        |                              |

HOMER L. CHASTAIN & ASSOCIATES, LLP  
CONSULTING ENGINEERS  
184-001397

DECATUR CHICAGO  
(317) 422-8544 (773) 714-0050

ROCKFORD  
(815) 489-0050