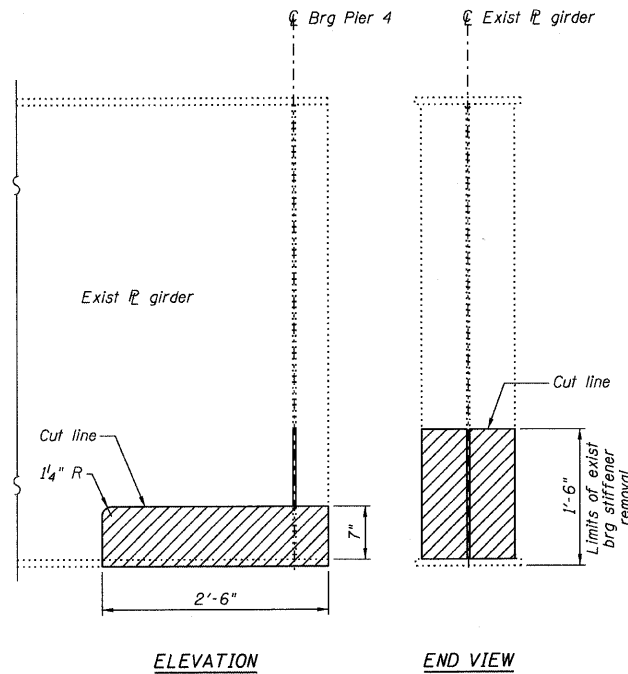
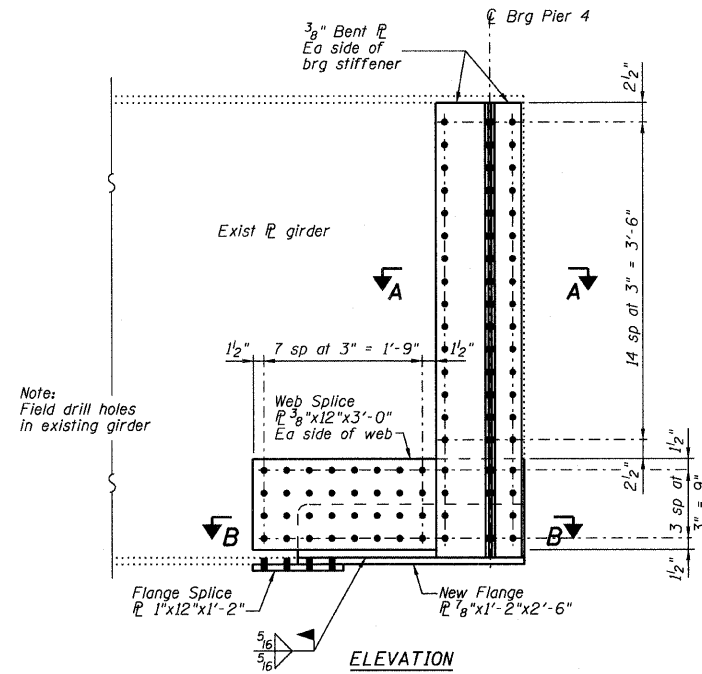


ROUTE NO.	SECTION	COUNTY	TOTAL SHEETS	SHEET NO.
FAS 1539		MACON	57	20
FED. ROAD DIST. NO.	ILLINOIS	PROJECT		

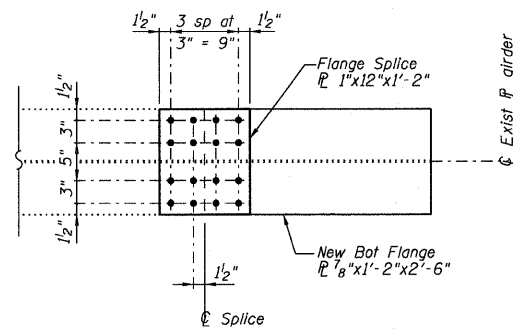
00-00155-00-BR



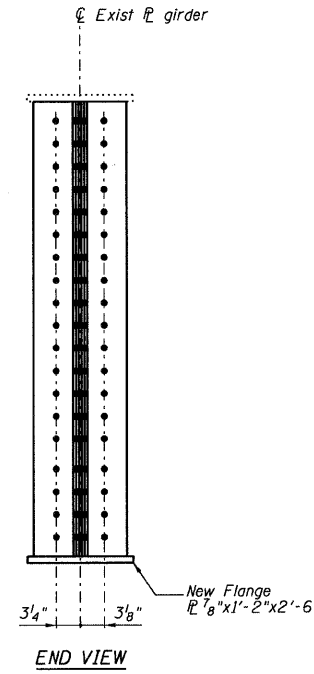
ELEVATION **END VIEW**
END OF GIRDER REMOVAL DETAIL
(Girders 1 thru 5 at Pier 4)



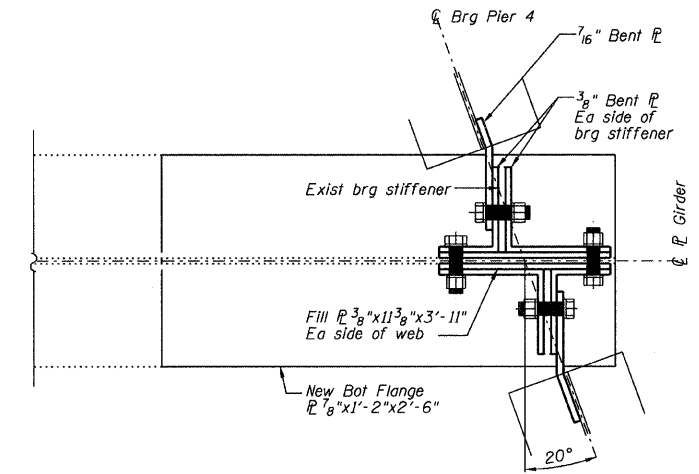
ELEVATION
GIRDER REPAIR DETAIL B
(Girders 1 thru 5 at Pier 4)



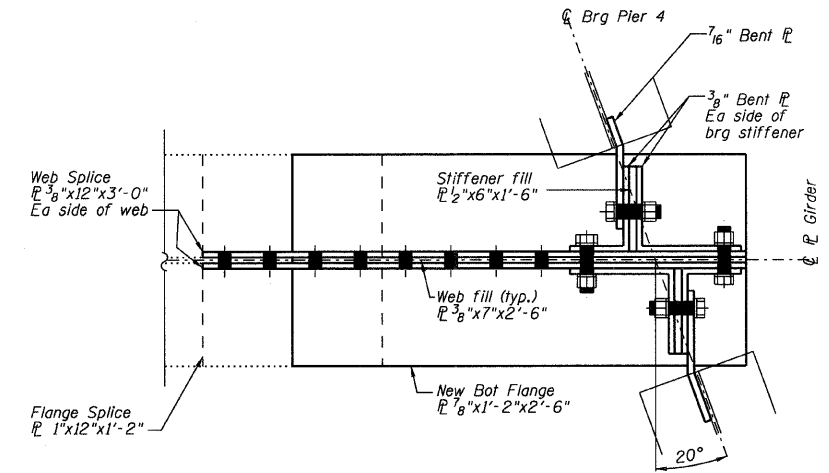
BOTTOM SPLICE PLATE DETAIL



END VIEW



SECTION A-A



SECTION B-B

BILL OF MATERIAL

Item	Unit	Total
Furnishing and Erecting	Pound	7790
Structural Steel		

Note:
Hatched area indicates removal of existing structural steel.
Cost included with "Furnishing and Erecting Structural Steel".
Contractor shall field verify dimensions before ordering materials.

WYCKLES ROAD OVER THE SANGAMON RIVER

STRUCTURAL STEEL REPAIR DETAILS - UNIT 1

REVISIONS	FAS 1539	SECTION 00-00155-00-BR	DRAWN BY DATE R KING 9/08
1		STA 30+50.00	CHECKED BY DATE JMB 9/08
2		SN 058-3030	BOOK NUMBER 389
3		MACON COUNTY	PROJECT No. 4698
4			SHEET No.
5			
6			
7			
8			
9			
10			

HOMER L.
CHASTAIN
& ASSOCIATES, LLP
CONSULTING ENGINEERS
184-001397

DECATUR CHICAGO
317 422-8544 (773) 714-0050
ROCKFORD
(815) 489-0050