

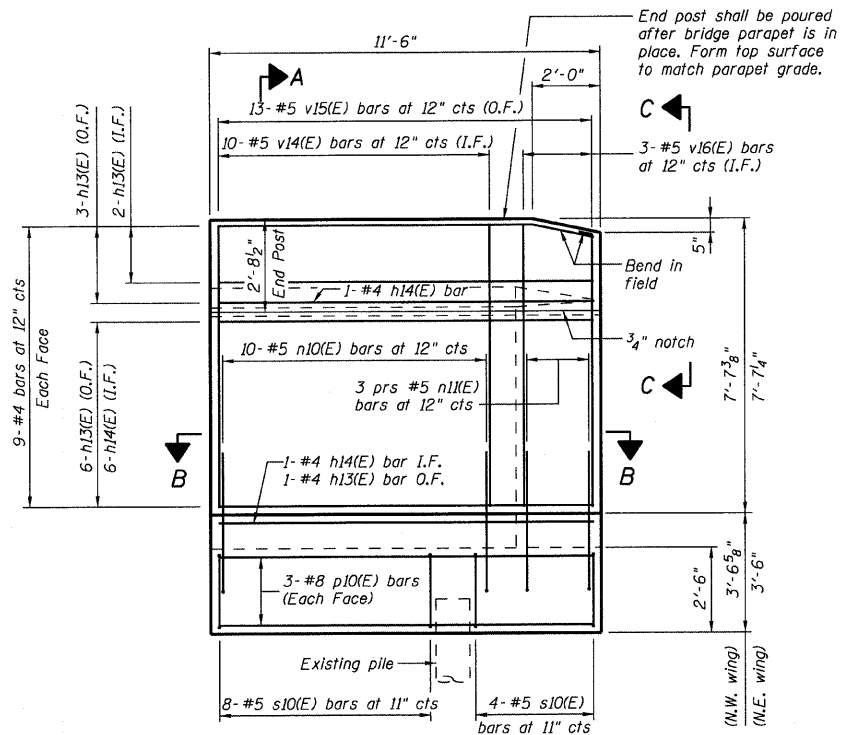
ROUTE NO.	SECTION	COUNTY	TOTAL SHEETS	SHEET NO.
FAS 1539		MACON	57	31
FED. ROAD DIST. NO.	ILLINOIS	PROJECT		

00-00155-00-BR

**BILL OF MATERIAL
NORTH ABUTMENT**

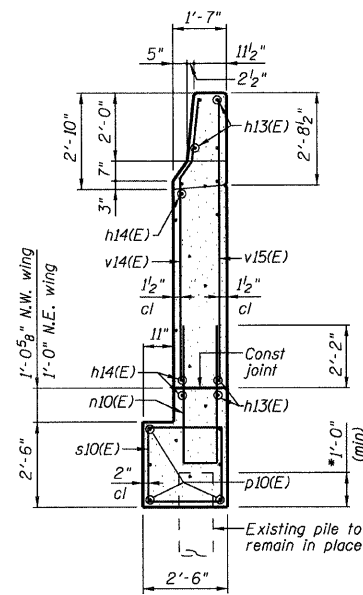
Bar	No	Size	Length	Shape
h10(E)	6	#6	38'-0"	
h11(E)	18	#5	5'-3"	
h12(E)	18	#5	5'-3"	
h13(E)	24	#4	11'-3"	
h14(E)	16	#4	11'-3"	
n10(E)	20	#5	12'-0"	
n11(E)	12	#5	6'-0"	
p10(E)	12	#8	11'-3"	
s10(E)	24	#5	9'-5"	
u10(E)	38	#4	3'-2"	
v10(E)	38	#5	2'-3"	
v11(E)	2	#5	4'-2"	
v12(E)	4	#5	5'-6"	
v13(E)	2	#5	3'-1"	
v14(E)	20	#5	7'-2"	
v15(E)	26	#5	7'-5"	
v16(E)	6	#5	7'-5"	
Concrete Structures	Cu Yd		13.5	
Reinforcement Bars Epoxy Coated	Pound		2340	
Concrete Removal	Cu Yd		14.5	

Reinforcement bars designated (E) shall be epoxy coated

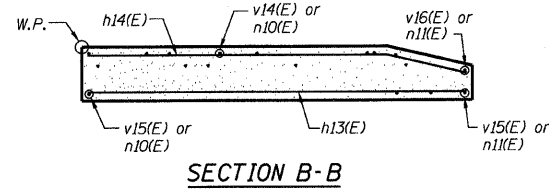


ELEVATION OF WINGWALL

*Bottom of wingwall elevation shall be lowered as necessary to provide a minimum pile embedment of 1'-0".

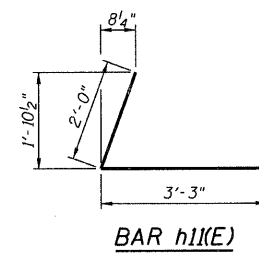
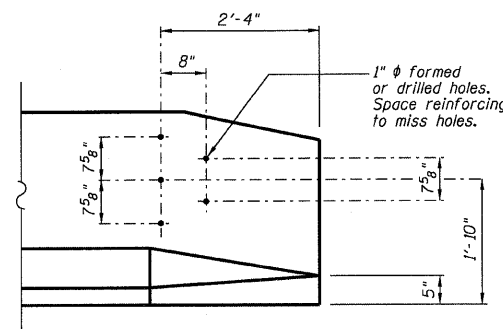


SECTION A-A

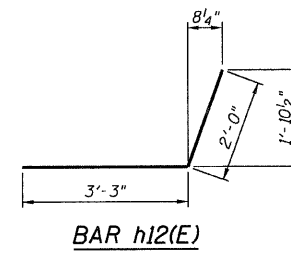


SECTION B-B

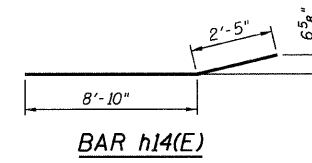
ANCHOR BOLT LOCATIONS FOR TRAFFIC BARRIER TERMINAL, TYPE 6
(Typ each parapet)



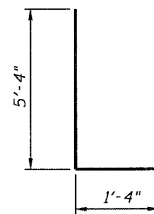
BAR h11(E)



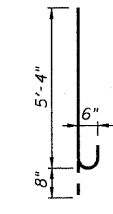
BAR h12(E)



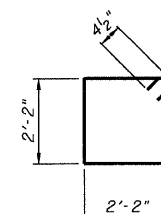
BAR h14(E)



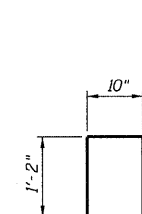
BAR n10(E)



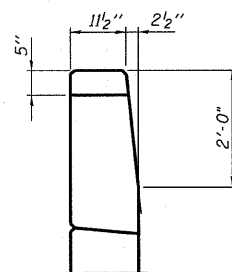
BAR n11(E)



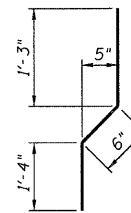
BAR s10(E)



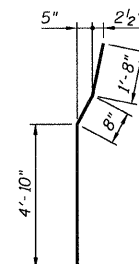
BAR u10(E)



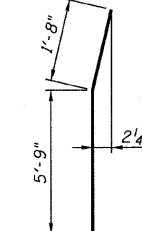
VIEW C-C



BAR v13(E)



BAR v14(E)



BAR v16(E)

Notes:
Quantity of concrete in end post included with "Concrete Superstructure" on Sheet 10 of 30.

WYCKLES ROAD OVER THE SANGAMON RIVER

NORTH ABUTMENT DETAILS

REVISIONS	FAS 1539	SECTION 00-00155-00-BR	DRAWN BY DATE
1	DATE INITIALS	STA 30+50.00	R KING 9/08
2		SN 058-3030	CHECKED BY DATE
3		MACON COUNTY	JMB 9/08
4			BOOK NUMBER
5			PROJECT NO.
6			4698
7			SHEET NO.
8			
9			
10			

HOMER L. CHASTAIN & ASSOCIATES, LLP
CONSULTING ENGINEERS
184-001297

DECATUR CHICAGO
(317) 422-8544 (773) 714-0050

ROCKFORD
(815) 489-0050