

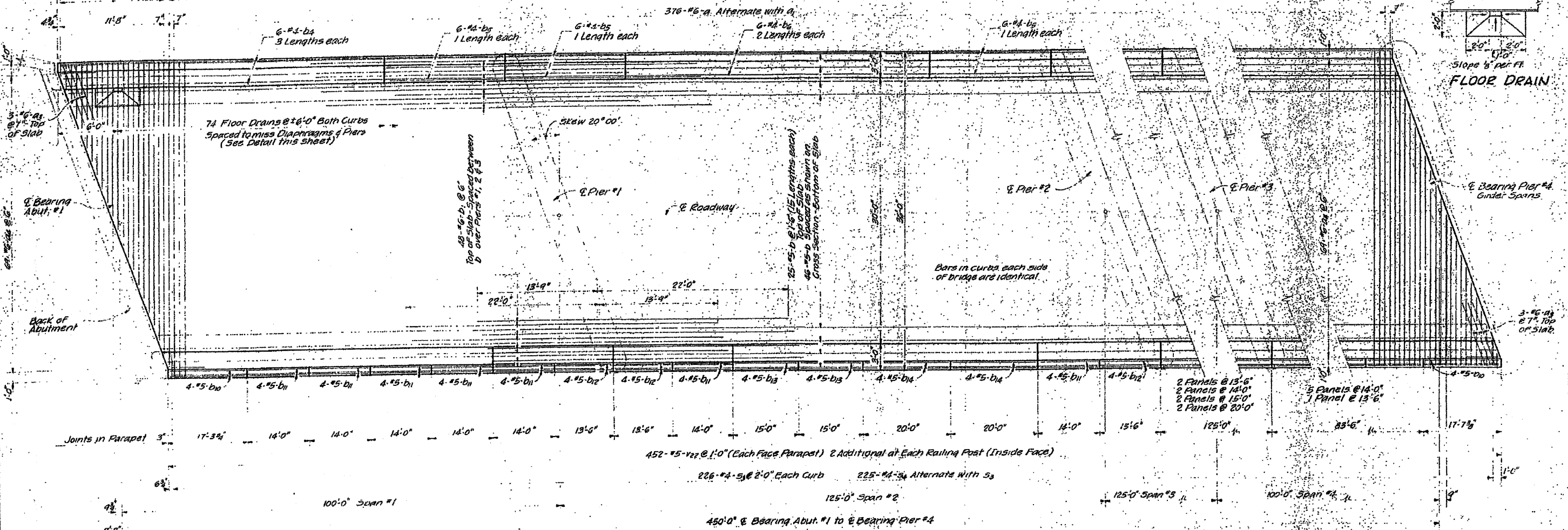
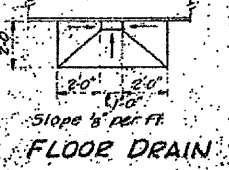
**FOR INFORMATION ONLY**

21-#6-a<sub>1</sub> @ 7" Top  
21-#6-a<sub>2</sub> @ 7" Bottom  
Order Full length - Cut to fit skew -  
Use remainder of bars in opposite end

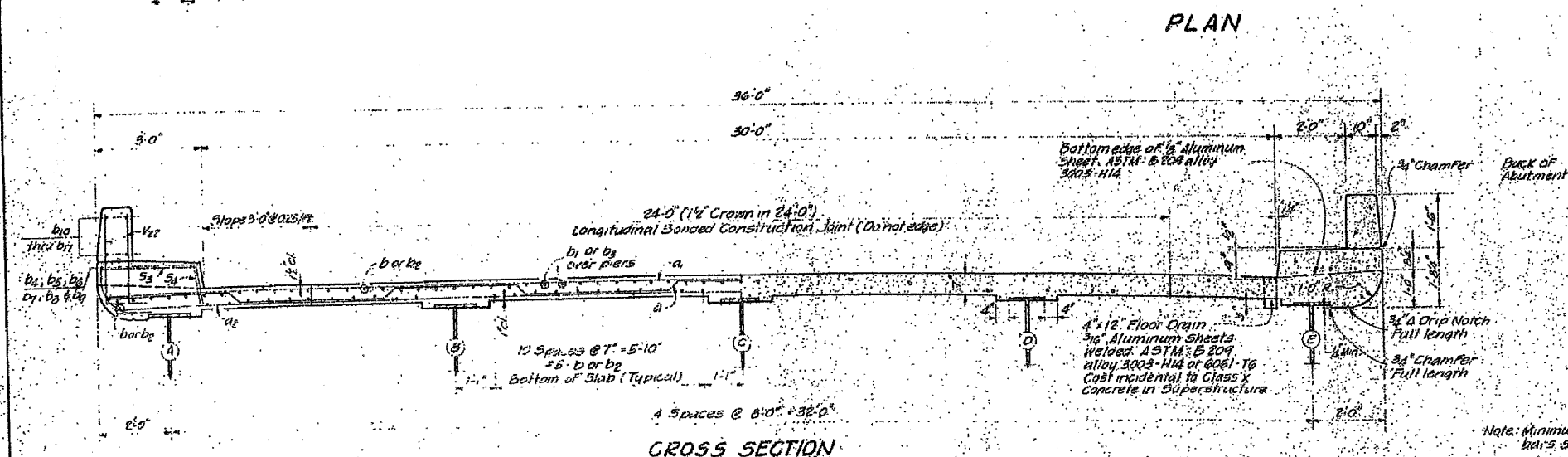
451-#6-a End to End of Deck

377-#6-a<sub>1</sub> @ 1'-0" Top 377-#6-a<sub>2</sub> @ 1'-0" Bottom

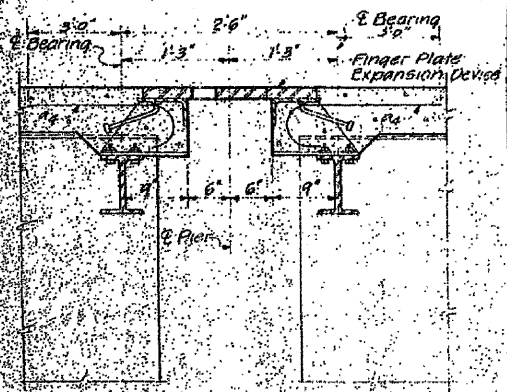
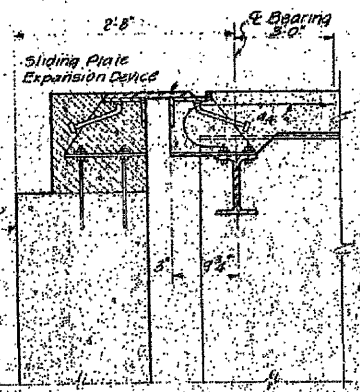
376-#6-a Alternate with a<sub>1</sub>  
6-#4-b<sub>1</sub> 3 Lengths each  
6-#4-b<sub>2</sub> 1 Length each  
6-#4-b<sub>3</sub> 1 Length each  
6-#4-b<sub>4</sub> 2 Lengths each  
6-#4-b<sub>5</sub> 1 Length each



PLAN



CROSS SECTION



Note: Minimum lap for all reinforcement bars shall be twenty bar diameters.

**FOR INFORMATION ONLY**

REVISIONS		CONCRETE DECK GIRDER SPANS		DATE	BY

MACON COUNTY  
F.A.S. RT 1539 SECTION 37'0"

HOMER L. CHASTAIN & ASSOCIATES  
CONSULTING ENGINEERS  
DECATUR, ILLINOIS

DESIGNED BY: J.L.H. 4-63  
CHECKED BY: F.M.L. 4-63  
JOB NO. 1539  
SHEET NO.