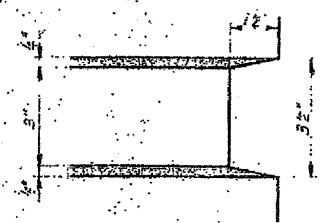


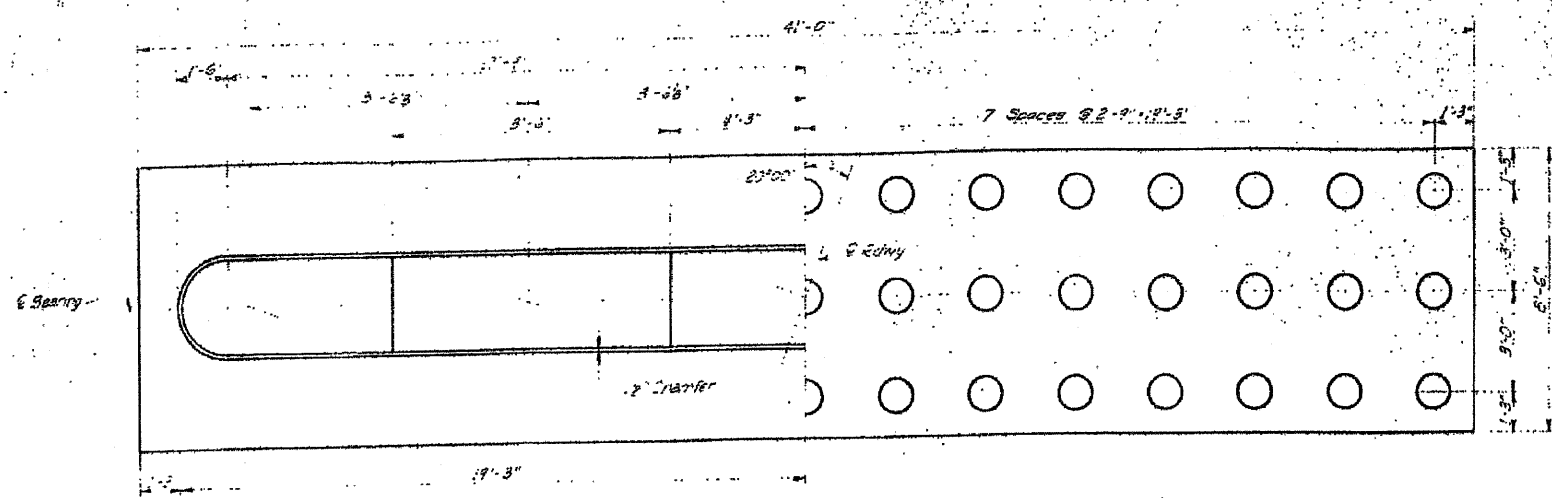
FOR INFORMATION ONLY

SHEET NO. 15
OF 24 SHEETS

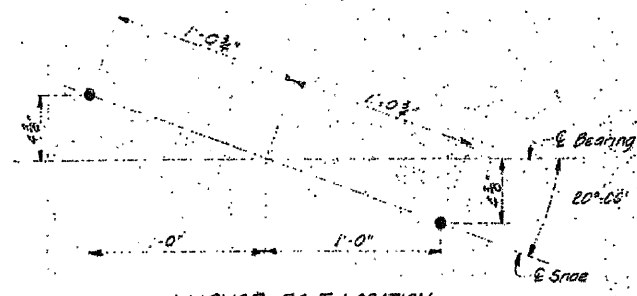
F.A.S. 37 Q
1539
S-1539-1 (1)



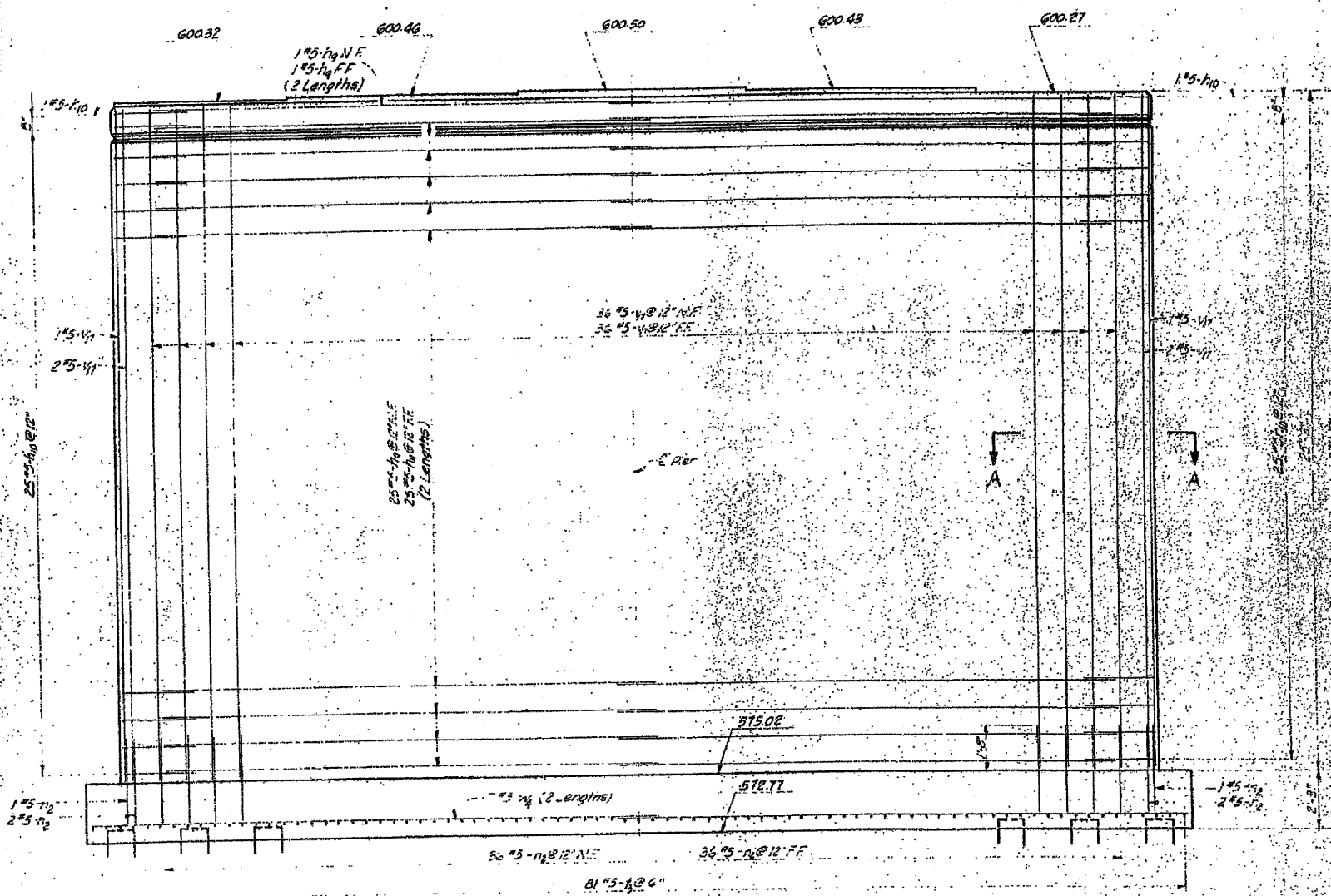
NOTCH-DETAIL



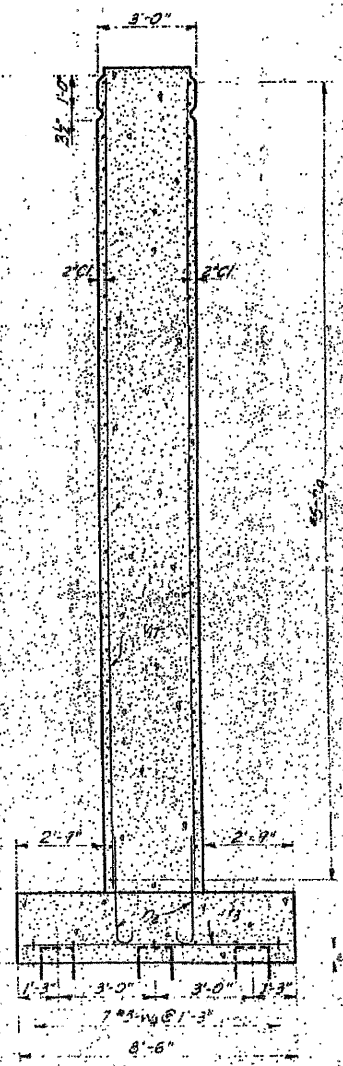
PLAN



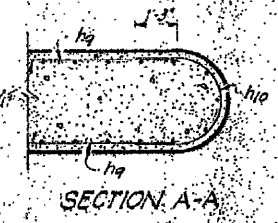
ANCHOR BOLT LOCATION



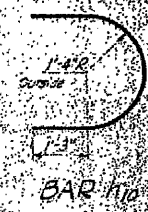
ELEVATION



SECTION



SECTION A-A



BAR #10



BAR #12

BILL OF MATERIAL				
BAR NO.	SIZE	LENGTH	SHAPE	
R1	#5	18'-6"		
R10	#5	6'-9"		
R2	#5	4'-0"		
R3	#5	6'-0"		
R4	#5	25'-0"		
R6	#5	21'-0"		
Class A Concrete			Cu Yd.	1850
Reinforcement Bars			Lb.	5730
Class A Excavation For Structures			Cu Yd.	146
Class B Excavation For Structures			Cu Yd.	198
Crossed Piles			Lin Ft.	1125
Test Piles - Timber			Each	1

PILE DATA
Type - Crossed Timber
Capacity - 25 Tons
Est. Length - 45'
45 Piles
1 Timber Test Pile

FOR INFORMATION ONLY

Minimum lap for all reinforcement bars shall be 20 bar diameters

PIER NO. 3		DESIGNED BY: BAC
MACON COUNTY		22-3-63
F.A.S. RT. 1539	SECTION 37 Q	CHECKED BY: BAC
HOMER L. CHASTAIN & ASSOCIATES		FILE 3-63
CONSULTING ENGINEERS		CODE NUMBER
DECATUR, ILLINOIS		PROJECT NO.
		SHEET NO.