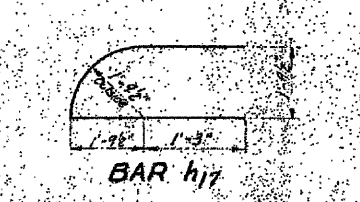
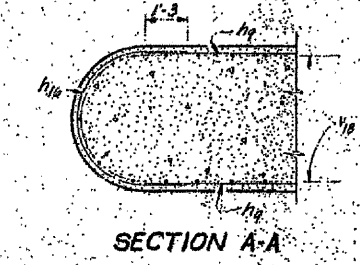
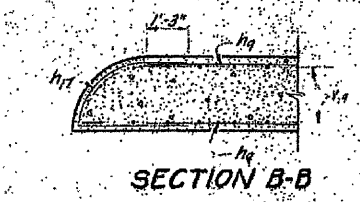
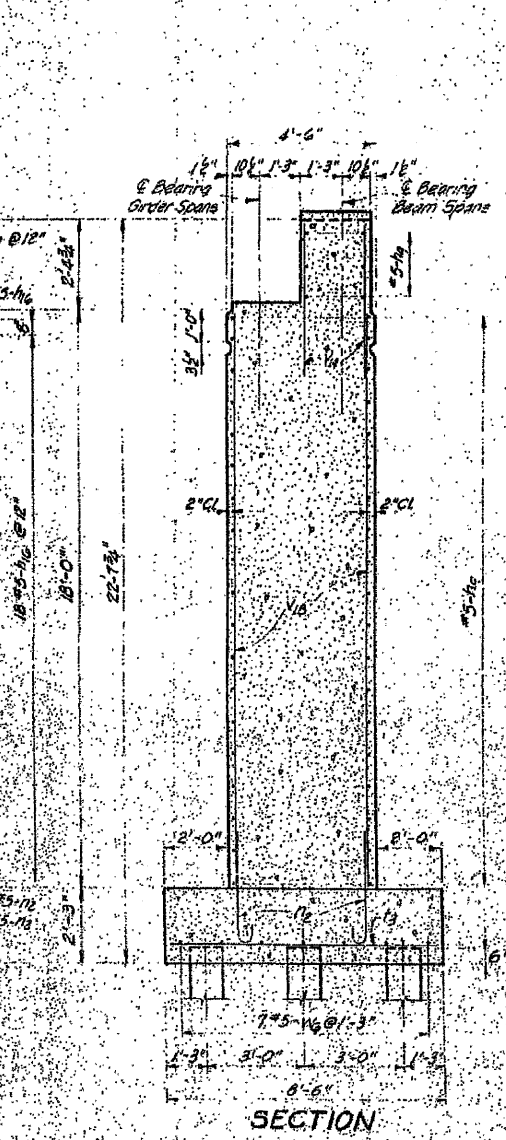
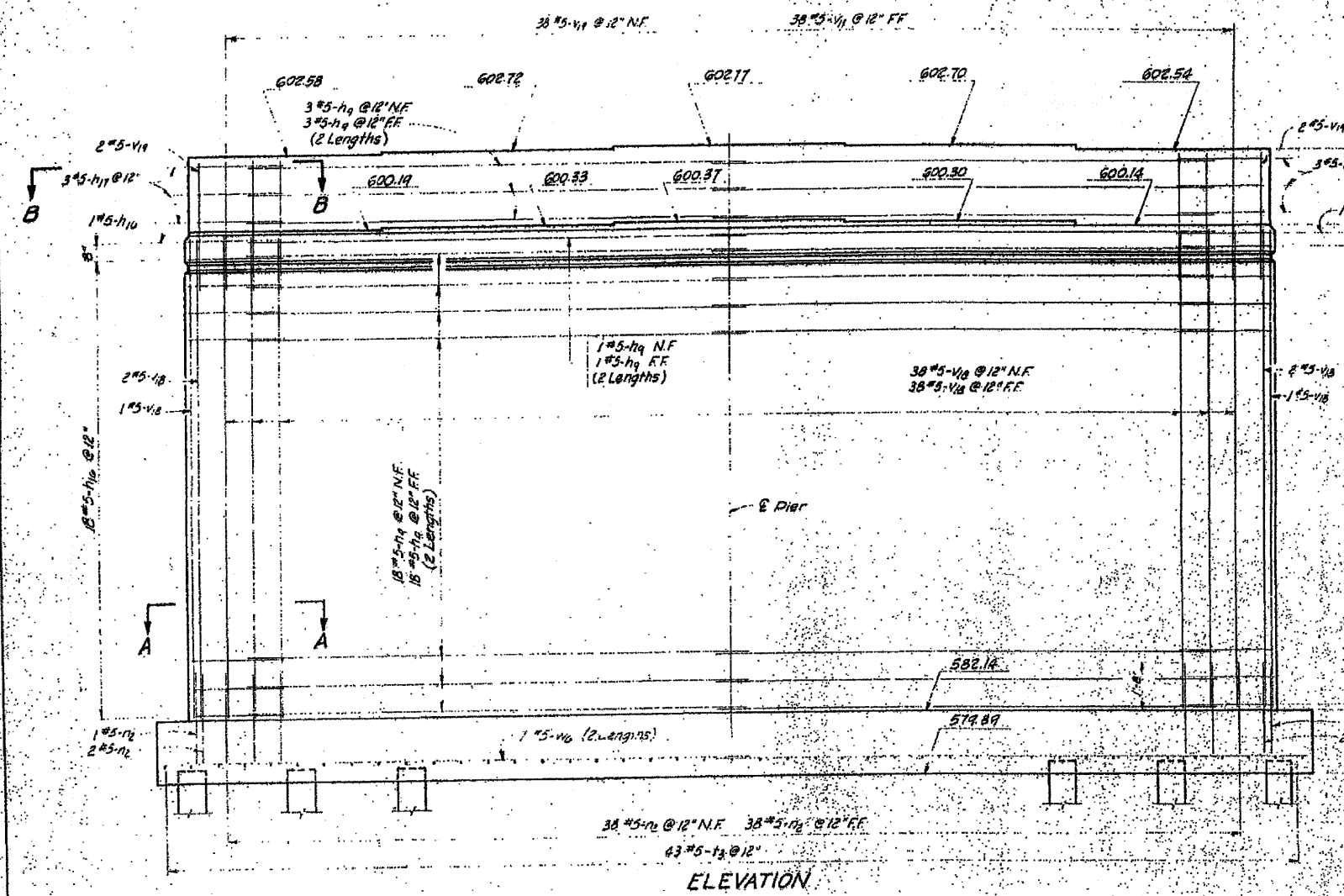
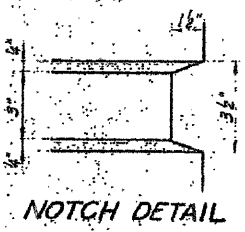
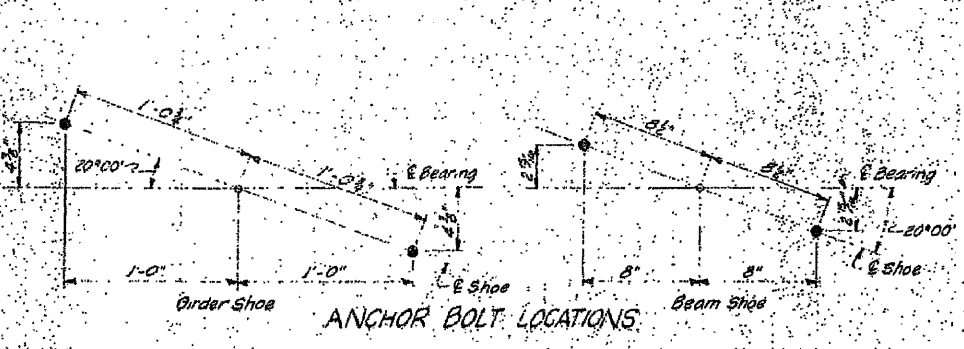
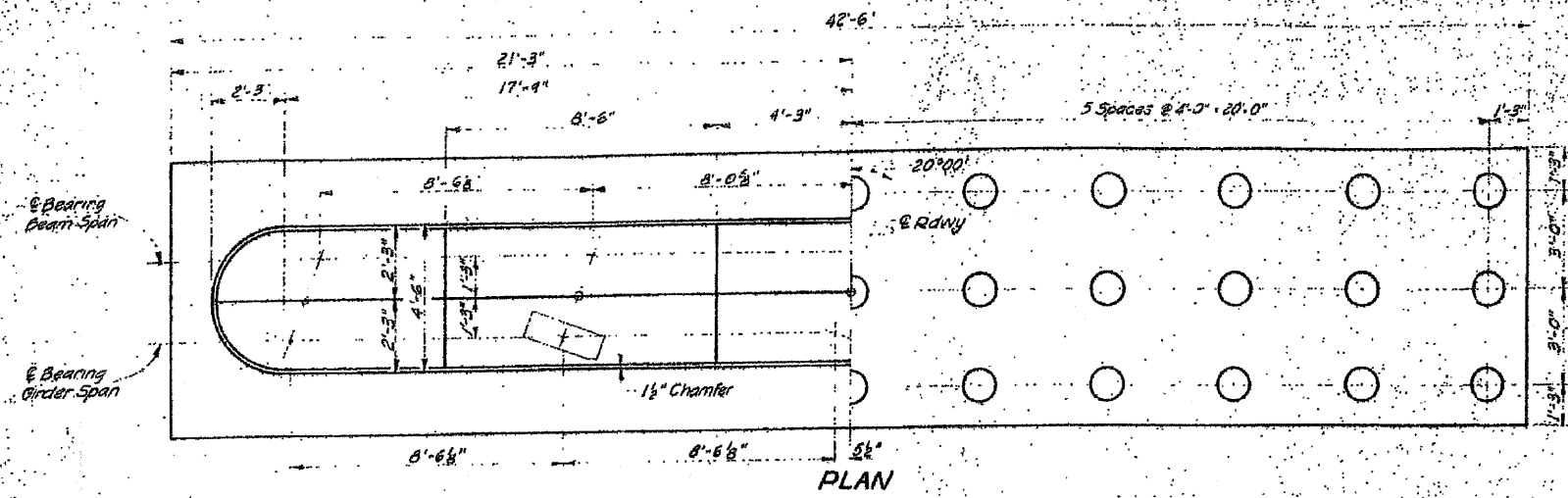


**FOR INFORMATION ONLY**

SHEET NO. 16  
OF 24 SHEETS

ROUTE NO. 1 SECTION  
E.A.S. 1539 370  
MACON 66 31  
PROJECT S-1539-1(1)



BILL OF MATERIAL				
BAR NO.	SIZE	LENGTH	SHAPE	
h17	#5	18'-6"	C	
h16	#5	9'-0"	C	
h17	#5	7'-2"	C	
n2	#5	4'-0"	C	
n3	#5	6'-0"		
h16	#5	17'-9"		
h16	#5	4'-6"		
h16	#5	2'-9"		
Class A Concrete			Cu. Yd.	155.2
Reinforcement Bars			Lb.	5030
Class A Excavation for Structures			Cu. Yd.	161
Class B Excavation for Structures			Cu. Yd.	52
Crested Piles			Lin. Ft.	825
Test Piles - Timber			Each	1

**PILE DATA**  
Type - Crested Timber  
Capacity - 25 Tons  
Est. Length - 25'  
33' Piled  
1 Timber Test Pile

**FOR INFORMATION ONLY**

Minimum lap for all reinforcement bars shall be 20 bar diameters

PIER NO. 4

REVISIONS	MADE BY	DATE
1		
2		
3		
4		
5		
6		
7		
8		
9		
10		

MADE BY: DATE: 3-63  
CHECKED BY: DATE: 3-63  
PROJECT NO.:  
SHEET NO.:

MACON COUNTY  
E.A.S. RT. 1539 SECTION 37-0

HOMER L. CHASTAIN & ASSOCIATES  
CONSULTING ENGINEERS  
DECATUR, ILLINOIS