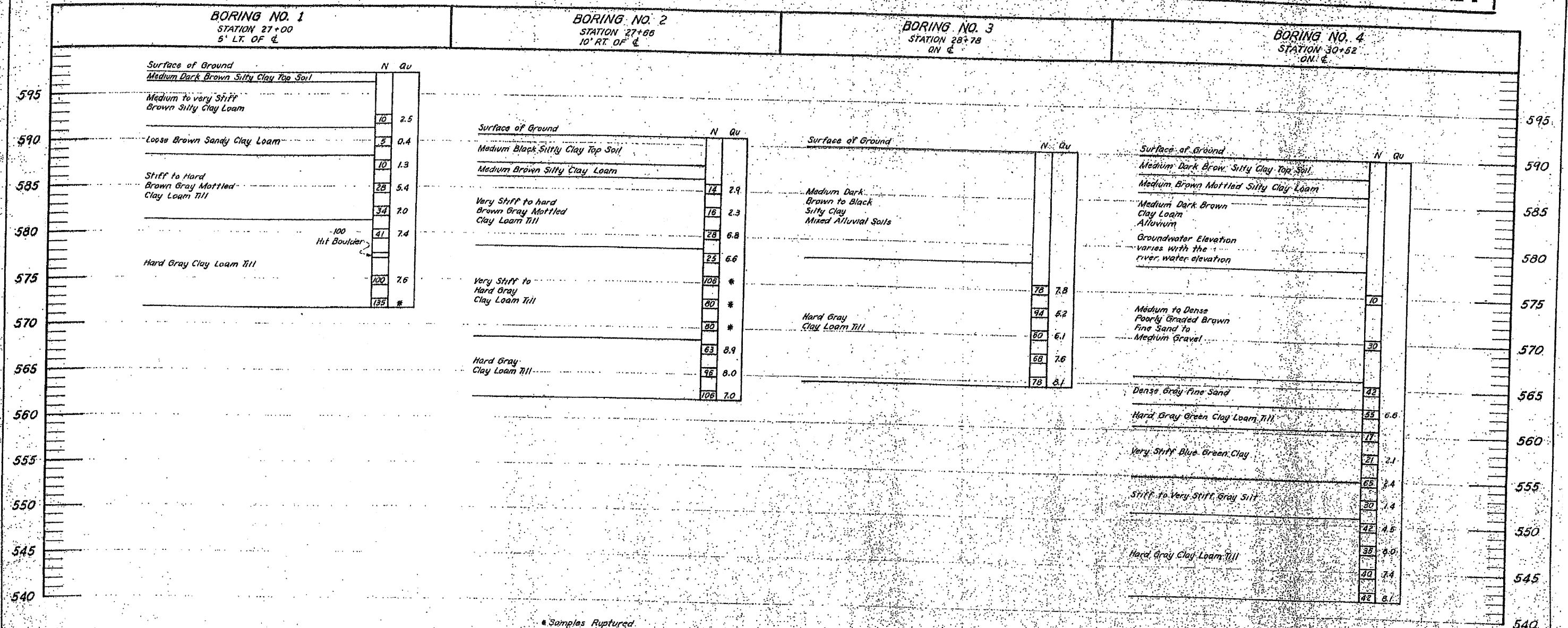


**FOR INFORMATION ONLY**



\* Samples Ruptured

N = Standard Penetration Test - Blows per foot to drive 2" o.d. Split Spoon Sampler 12" with 140 lb. hammer falling 30"  
 Qu = Unconfined Compressive Strength in lbs Per Square Foot

**FOR INFORMATION ONLY**

REVISIONS		BORINGS	
NO.	DATE	MACON COUNTY	
1		SECTION 37 Q	
2		FAS RT. 1539	
3		DATE 3-65	
4		DRAWN BY B.L.C.	
5		CHECKED BY B.L.C.	
6		PROJECT NO.	
7		HOMER L. CHASTAIN & ASSOCIATES	
8		CONSULTING ENGINEERS	
9		DECATUR, ILLINOIS	
10		SHEET NO.	