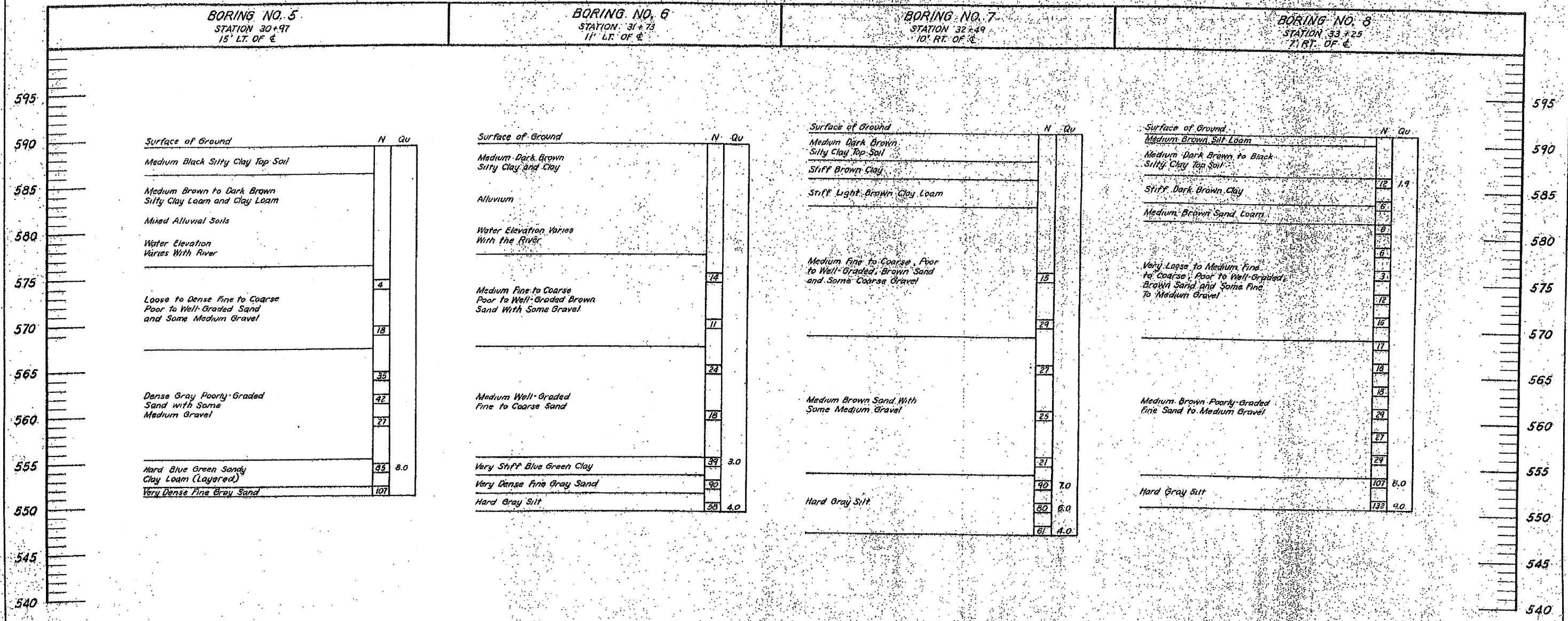


FOR INFORMATION ONLY



N = Standard Penetration Test - Blows per foot to drive 2" o.d. Split Spoon Sampler 12" with 140 lb. hammer falling 30"
 Qu = Unconfined Compressive Strength in Ton Per Square Foot

FOR INFORMATION ONLY

REVISIONS		BORINGS	
F.A.S. RT. 1539		MACON COUNTY	
SECTION 37 Q		DRAWN BY: DATE	
HOMER L. CHASTAIN & ASSOCIATES		R.C.M. 5-63	
CONSULTING ENGINEERS		CHECKED BY: DATE	
DECATUR, ILLINOIS		W.L.C. 7-63	
PROJECT NO.		SHEET NO.	