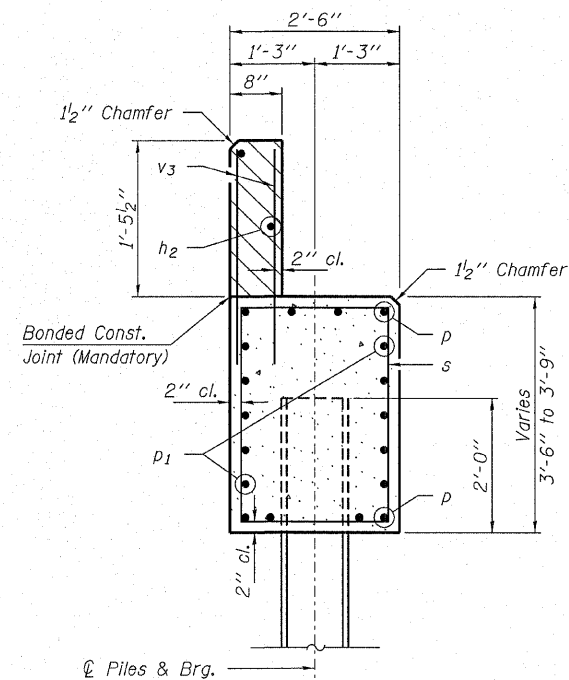
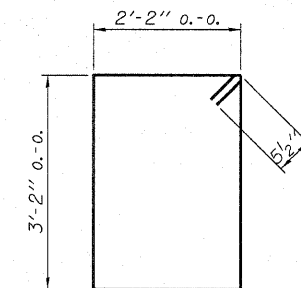


PLAN

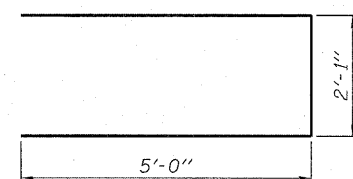


SECTION A-A

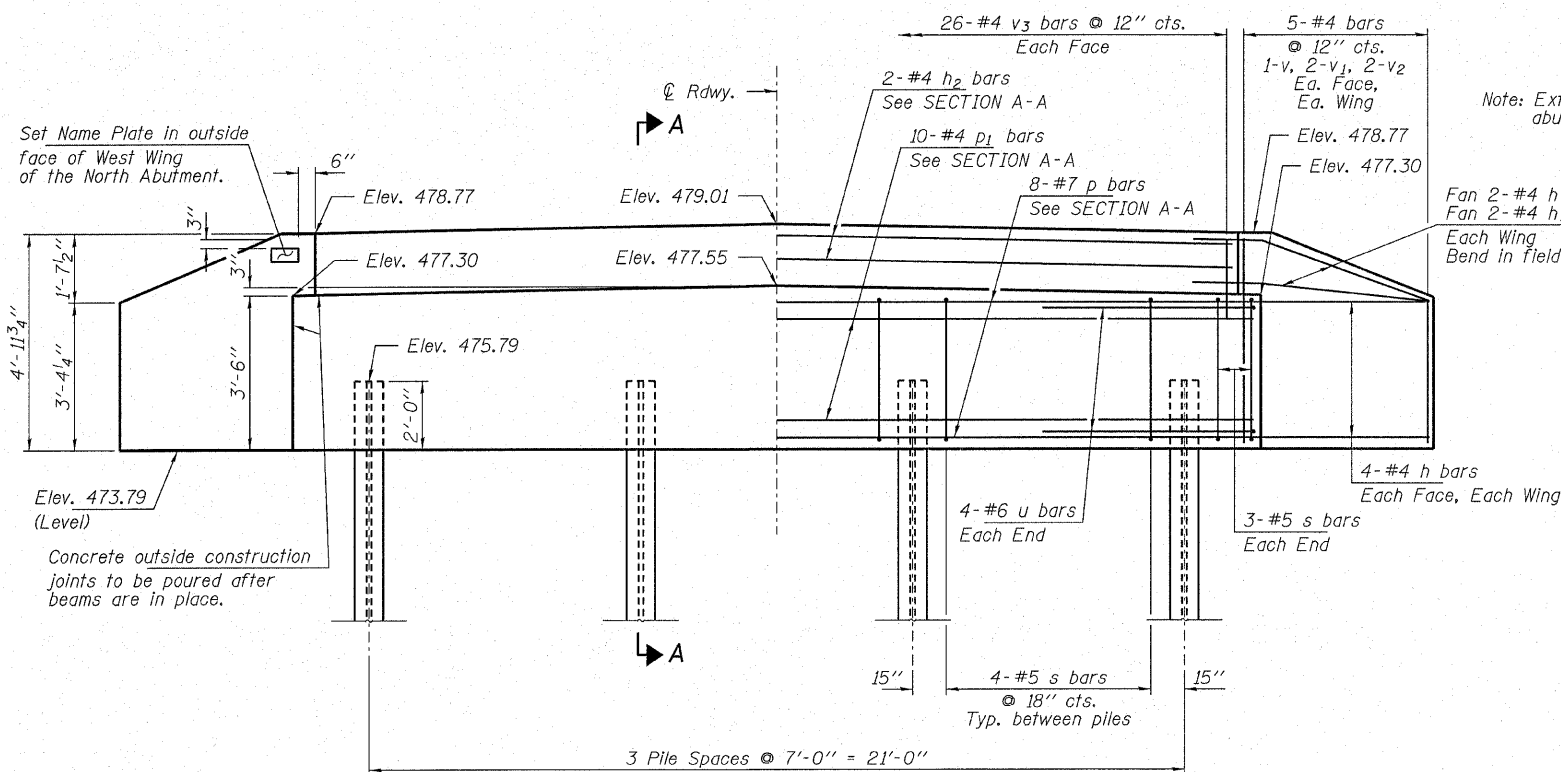
Hatched area to be poured after beams are in place.



BAR S



BAR U



ELEVATION

PILE DATA

Type _____ Steel HP12x53
 No. Req'd. (N. Abut.) _____ 4
 Factored Resistance Available (Rf) _____ 209 Kips/Pile
 Nominal Required Bearing (Rn) _____ 419 Kips/Pile
 Est. Length _____ 40 Ft/Pile

Notes: The Steel H-Piles shall be according to AASHTO M270 Grade 50.

BILL OF MATERIAL - S. ABUT.

BAR	NO.	SIZE	LENGTH	SHAPE
h	20	#4	5'-6"	—
h1	4	#4	4'-0"	—
h2	2	#4	25'-2"	—
p	8	#7	25'-2"	—
p1	10	#4	25'-2"	—
s	18	#5	11'-7"	□
u	8	#6	12'-1"	—
v	4	#4	4'-6"	—
v1	8	#4	4'-0"	—
v2	8	#4	3'-0"	—
v3	52	#4	2'-4"	—
Concrete Structures			Cu. Yd.	10.7
Reinforcement Bars			Pound	1,190
Steel Piles HP12x53			Foot	160
Name Plates			Each	1

**SOUTH ABUTMENT
 STRUCTURE NO. 041-3742**

DESIGNED - A.S.L.
CHECKED - S.W.M.
DRAWN - D.T.M.
CHECKED - D.A.B.

HAMPTON, LENZINI & RENWICK, INC.
 CIVIL & STRUCTURAL ENGINEERS
 LAND SURVEYORS

HLR 3085 STEVENSON DRIVE, SUITE 201
 SPRINGFIELD, ILLINOIS 62703
 (217) 546-3400

PROJECT NUMBER: 08.0127.130 DATE: 01/21/09

T.R.	SECTION	COUNTY	TOTAL SHEETS	SHEET NO.
10	03-03113-00-BR	JEFFERSON	15	11
CASNER ROAD DISTRICT		CONTRACT NO. 99362		
FED. ROAD DIST. NO.	ILLINOIS	FED. AID PROJECT		