

DATE	REVISION	BY

LITCHFIELD MUNICIPAL AIRPORT
LITCHFIELD, ILLINOIS

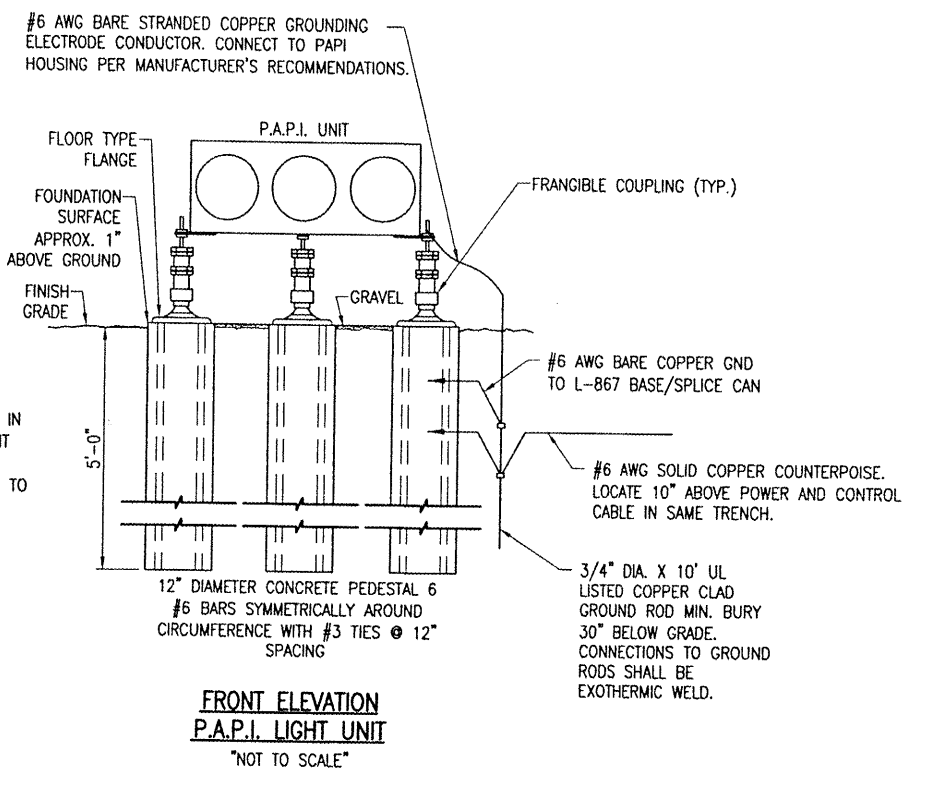
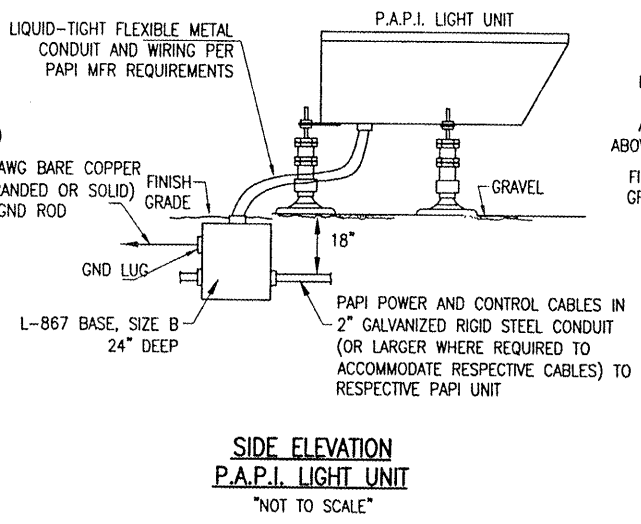
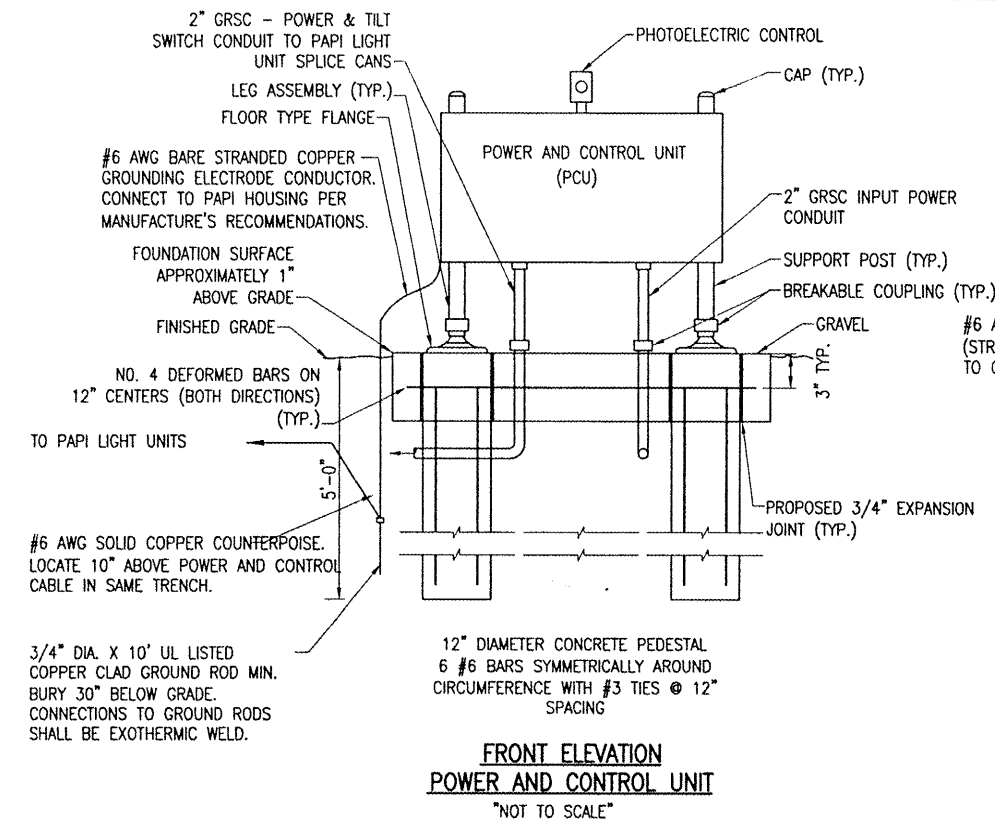
ILL. PROJ.: 31F-3559 A.I.P. PROJ.: 3-17-0063-B13

HEL Project No. 814-06RWD_0800	DATE	01/29/08
Excavate R-542ELE.DWG	MDR	01/15/08
Scale: N/A	MDR	01/15/08
Date: 01/29/08	CAH/KKL	01/29/08
LAYOUT		
DRAWN		
REVIEWED		



PROPOSED P.F.C.
ON RUNWAY 9-27

PROPOSED
PAPI DETAILS AND NOTES
RUNWAY 27 END



P.A.P.I. NOTES

THE PROPOSED PRECISION APPROACH PATH INDICATOR (PAPI) SYSTEM WILL BE PLACED AT THE LOCATION SHOWN ON SHEET NO.12.

THE PROPOSED CONCRETE PEDESTALS WILL BE AS DETAILED ON THIS SHEET. THE NUMBER OF PEDESTALS CONSTRUCTED FOR EACH PAPI UNIT WILL DEPEND ON THE UNIT SELECTED BY THE CONTRACTOR FOR INSTALLATION.

SIX (6") INCHES OF GRAVEL ON TOP OF BLACK PLASTIC WILL BE PLACED UNDER EACH PAPI UNIT TO HALT VEGETATION GROWTH.

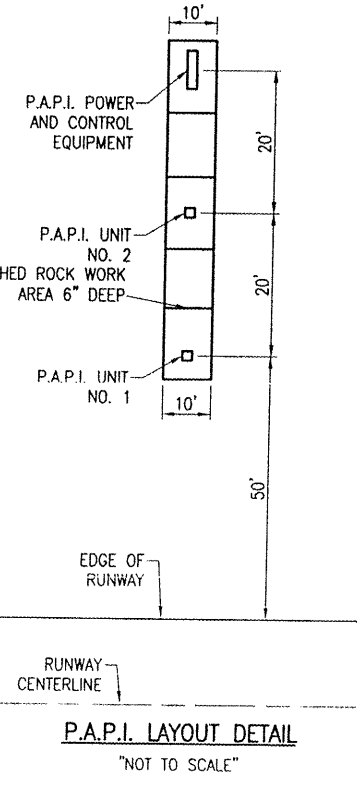
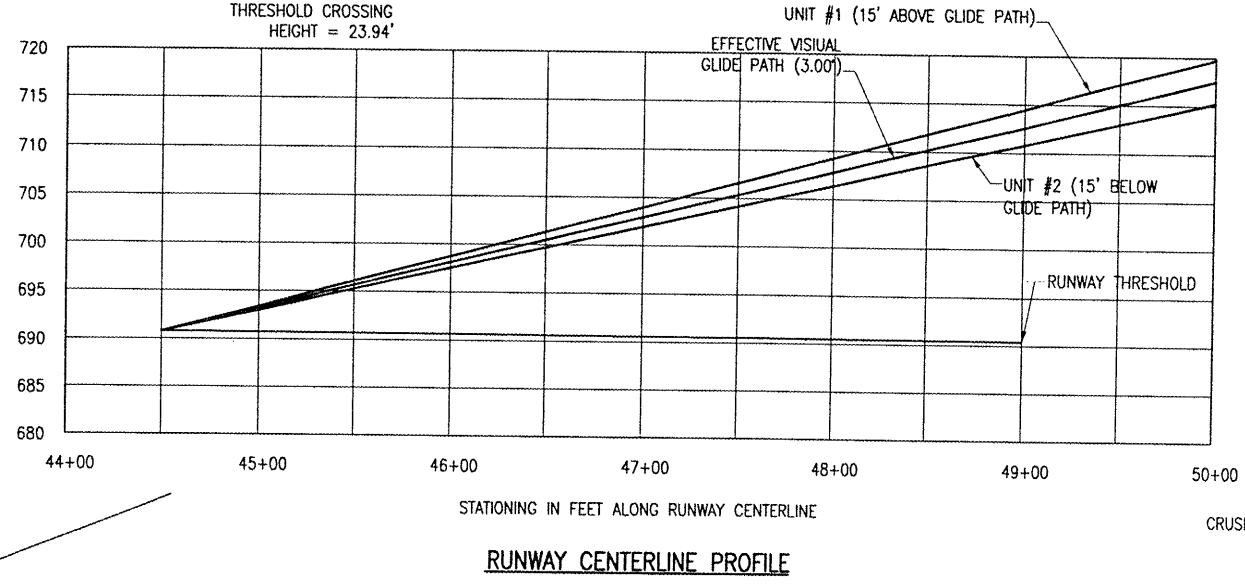
EACH PAPI UNIT WILL BE CONSTRUCTED SUCH THAT THE BEAM CENTERS WILL BE WITHIN ±1" OF ELEVATION 690.80.

THE PROPOSED POWER CABLE TO THE PAPI SYSTEM WILL BE 3-1/C NO. 6, 600V., TYPE XLP-USE UNDERGROUND CABLE IN 1-1/4" UNIT DUCT. THIS CABLE WILL BE TRENCHED IN PLACE AT A MINIMUM DEPTH OF 18" BELOW FINISHED GRADE.

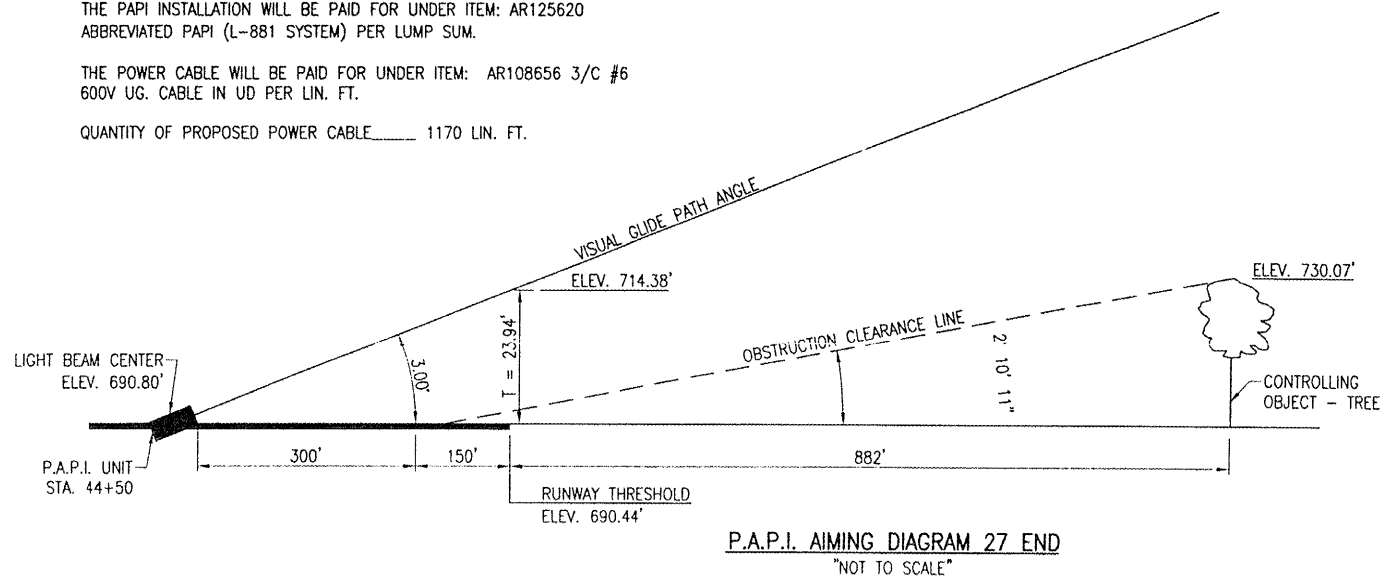
THE PAPI INSTALLATION WILL BE PAID FOR UNDER ITEM: AR125620 ABBREVIATED PAPI (L-881 SYSTEM) PER LUMP SUM.

THE POWER CABLE WILL BE PAID FOR UNDER ITEM: AR108656 3/C #6 600V UG. CABLE IN UD PER LIN. FT.

QUANTITY OF PROPOSED POWER CABLE _____ 1170 LIN. FT.



	P.A.P.I. UNIT #1	P.A.P.I. UNIT #2	P AND C UNIT
DISTANCE FROM RUNWAY C	87.5'	107.5'	127.5'
AIMING ANGLE	3°15'	2°45'	N/A
APPROXIMATE GROUND ELEVATION	686.3'	685.7'	685.3'
P.A.P.I. UNIT APERTURE ELEVATION	690.80'	690.80'	N/A



3:28 11, 2008 10:31 AM HAGL00382
 S:\PROJECTS\LITCHFIELD\814-06RWD\AIRPORT\SHEETS\9-542ELE.DWG - Layout1