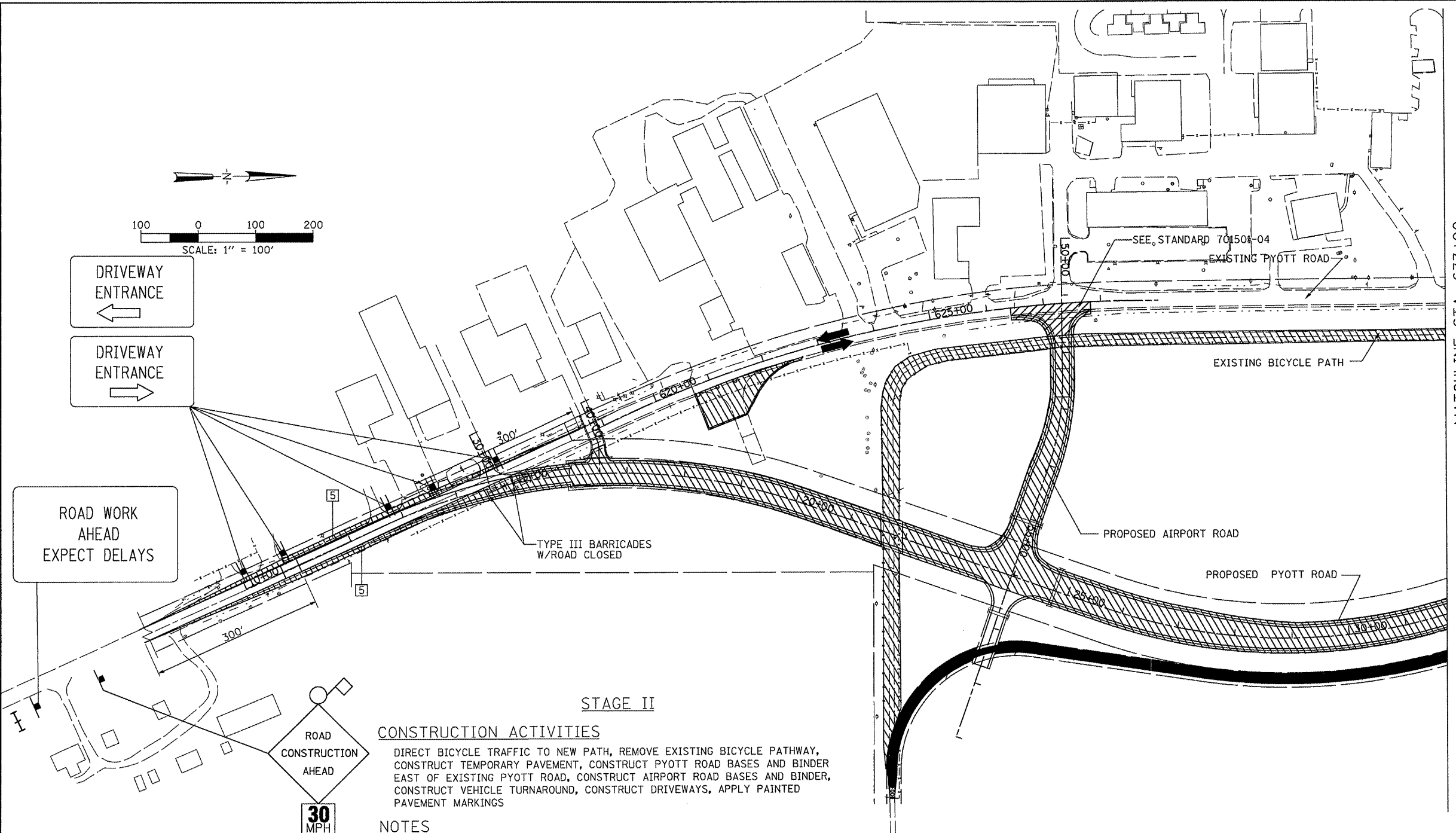
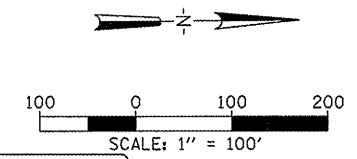


Hanson Professional Services Inc.  
 Suite 200, 815 Commerce Drive  
 Oak Brook, Illinois 60923  
 © Copyright Hanson Professional Services Inc. 2009



MATCHLINE STA. 633+00

ROAD WORK  
AHEAD  
EXPECT DELAYS

30  
MPH

**STAGE II**

**CONSTRUCTION ACTIVITIES**

DIRECT BICYCLE TRAFFIC TO NEW PATH, REMOVE EXISTING BICYCLE PATHWAY, CONSTRUCT TEMPORARY PAVEMENT, CONSTRUCT PYOTT ROAD BASES AND BINDER EAST OF EXISTING PYOTT ROAD, CONSTRUCT AIRPORT ROAD BASES AND BINDER, CONSTRUCT VEHICLE TURNAROUND, CONSTRUCT DRIVEWAYS, APPLY PAINTED PAVEMENT MARKINGS

**NOTES**

1. BICYCLE / PEDESTRIAN TRAFFIC WILL BE LOCATED ON THE NEW BICYCLE PATH.
2. TWO LANES OF TRAFFIC WILL BE MAINTAINED WHEN 701501-04 IS NOT IN USE
3. CONSTRUCTION ACTIVITIES ON BOTH SIDES OF EXISTING PYOTT ROAD WILL NOT OCCUR AT THE SAME TIME.
4. ALL CONSTRUCTION STAGING IS SUGGESTED AND CAN BE REVISED ON WRITTEN APPROVAL OF THE ENGINEER TWO WEEKS PRIOR TO THE START OF WORK. THERE WILL BE NO ADJUSTMENT IN THE "TRAFFIC CONTROL AND PROTECTION" UNIT PRICE DUE TO THE CONTRACTOR CHANGING THE PLAN CONSTRUCTION SEQUENCE. ANY CHANGES WILL BE IN ACCORDANCE WITH THESE NOTES AND THE SPECIAL PROVISION FOR "TRAFFIC CONTROL AND PROTECTION".
5. CONSTRUCT TEMPORARY PAVEMENT OUTSIDE OF PERMANENT PAVEMENT LOCATION, SEE DETAIL "C". CUT AND FILL FOR TEMPORARY PAVEMENT PAID FOR UNDER AR152410.
6. PAINTED PAVEMENT MARKINGS WILL BE APPLIED ON NEW BINDER TO DELINEATE STAGE III TRAFFIC
7. THE CONTRACTOR SHALL PROVIDE TEMPORARY DRIVEWAY ACCESS AS DESCRIBED IN THE GENERAL NOTES, OR AS DIRECTED BY THE RESIDENT ENGINEER. THIS WORK IS INCIDENTAL TO ITEM 150530.

**LEGEND**

- WORK AREA
- COMPLETED ROADWAY SURFACE
- INTERIM ROADWAY SURFACE
- SIGN LOCATION
- TYPE II BARRICADE WITH STEADY BURNING LIGHTS
- DIRECTION OF TRAFFIC
- FLASHING LIGHT, SIGN MOUNTED
- 18" X 18" (MIN.) ORANGE WARNING FLAG
- TYPE III BARRICADE
- ROW LINE
- DRUM OR BARRICADE
- CHANGEABLE MESSAGE SIGN, TO REMAIN THROUGH ALL STAGES FOR MORE INFORMATION SEE SHEET 8

**APPLICABLE IDOT TRAFFIC CONTROL STANDARDS**

701001-01	OFF-RD OPERATIONS, 2L, 2W, MORE THAN 15' AWAY
701006-02	OFF-RD OPERATIONS, 2L, 2W, 15' TO 2' FROM PAVEMENT EDGE
701901	TRAFFIC CONTROL DEVICES
D-1 STANDARD (TC22)	ARTERIAL ROAD INFORMATIONAL SIGN
701501-04	URBAN LANE CLOSURE, 2L, 2W, UNDIVIDED
D-1 STANDARD (TC10)	TRAFFIC CONTROL AND PROTECTION FOR SIDE ROADS, INTERSECTIONS AND DRIVEWAYS
D-1 STANDARD (TC26)	DRIVEWAY ENTRANCE SIGNING

FILE NAME =	USER NAME = B1air01219	DESIGNED - DRM	REVISED -	<b>VILLAGE OF LAKE IN THE HILLS, ILLINOIS</b>	<b>CONSTRUCTION PHASING - STAGE II</b>	COUNTY	TOTAL SHEETS	SHEET NO.
\\05jobs\00841\05b021\civil part b\sheet\C-INT-MT201.sht	DRAWN - CBP	REVISIED -	MCHENRY			143	10	
PLOT SCALE = 199.9996' / IN.	CHECKED - AAH	REVISED -						
PLOT DATE = 02/25/2009, 11:38 AM	DATE - 05/21/08	REVISED -						
						AIP NO. 3-17-0112-B10 ILLINOIS IDA NO. 3CK-3807		