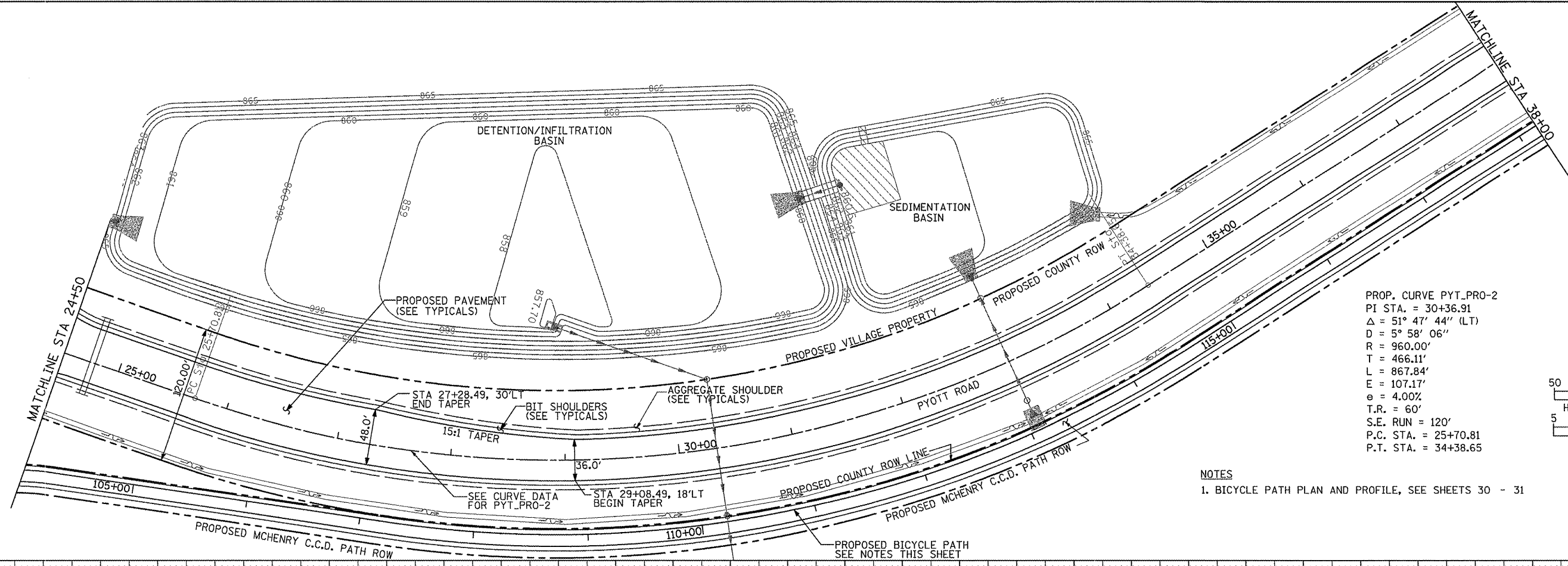


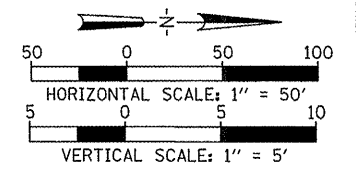
Hanson Professional Services Inc.
 Suite 200, 815 Commerce Drive
 Oak Brook, Illinois 60523
 © Copyright Hanson Professional Services Inc. 2008



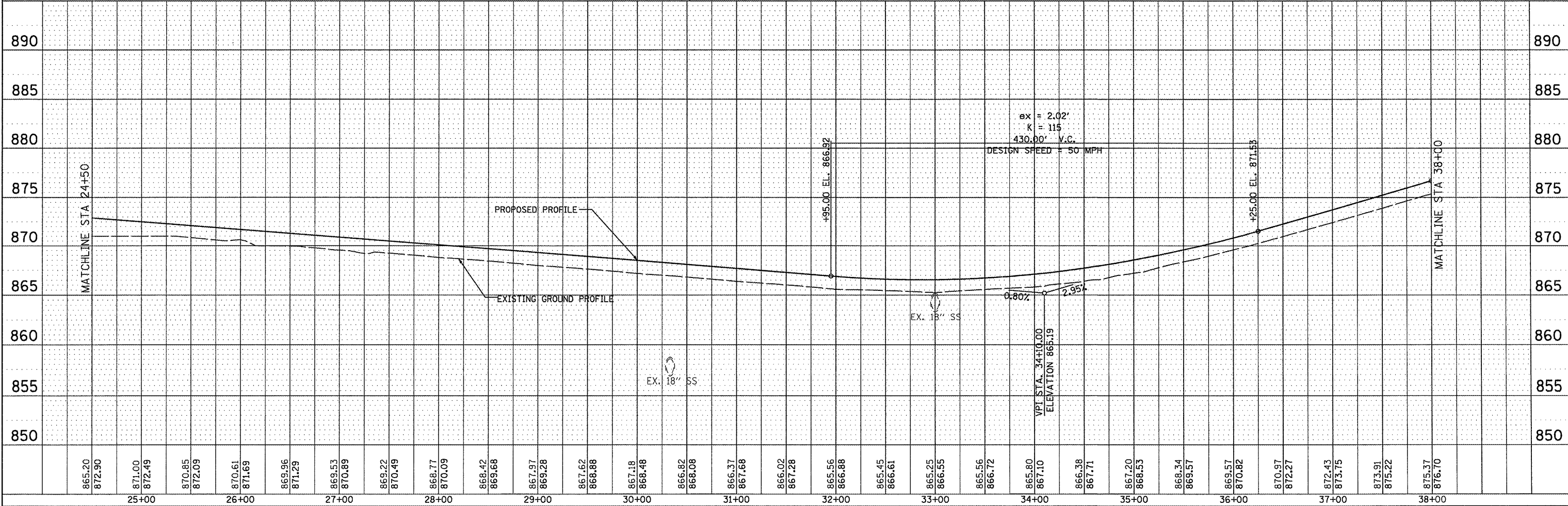
DATE	
BY	
PROF. FILE	
PLOTTED	
CHECKED	
DATE	
NO. _____	
NO. _____	
NO. _____	
NO. _____	



PROP. CURVE PYT_PRO-2
 PI STA. = 30+36.91
 $\Delta = 51^\circ 47' 44''$ (LT)
 $D = 5^\circ 58' 06''$
 $R = 960.00'$
 $T = 466.11'$
 $L = 867.84'$
 $E = 107.17'$
 $e = 4.00\%$
 $T.R. = 60'$
 $S.E. RUN = 120'$
 $P.C. STA. = 25+70.81$
 $P.T. STA. = 34+38.65$



NOTES
 1. BICYCLE PATH PLAN AND PROFILE, SEE SHEETS 30 - 31



865.20	872.90	871.00	872.49	870.85	872.09	870.61	871.69	869.96	871.29	869.53	870.89	869.22	870.49	868.77	870.09	868.42	869.68	867.37	869.28	867.62	868.88	867.18	868.48	866.82	868.08	866.37	867.68	866.02	867.28	865.56	866.88	865.45	866.61	865.25	866.55	865.56	866.72	865.80	867.10	866.38	867.71	867.20	868.53	868.34	869.57	869.57	870.82	870.37	872.27	872.43	873.75	873.91	875.22	875.37	876.70
25+00		26+00		27+00		28+00		29+00		30+00		31+00		32+00		33+00		34+00		35+00		36+00		37+00		38+00																													

VILLAGE OF
 LAKE IN THE HILLS, ILLINOIS

PYOTT ROAD PLAN AND PROFILE

SCALE: 1"=50' SHEET NO. 28 OF 143 SHEETS STA. 24+50 TO STA. 38+00

F.A. RTE.	SECTION	COUNTY	TOTAL SHEETS	SHEET NO.
			143	28
CONTRACT NO.				
AIP NO. 3-17-0112-B10 ILLINOIS IDA NO. 3CK-3807				