

**NOTES:**

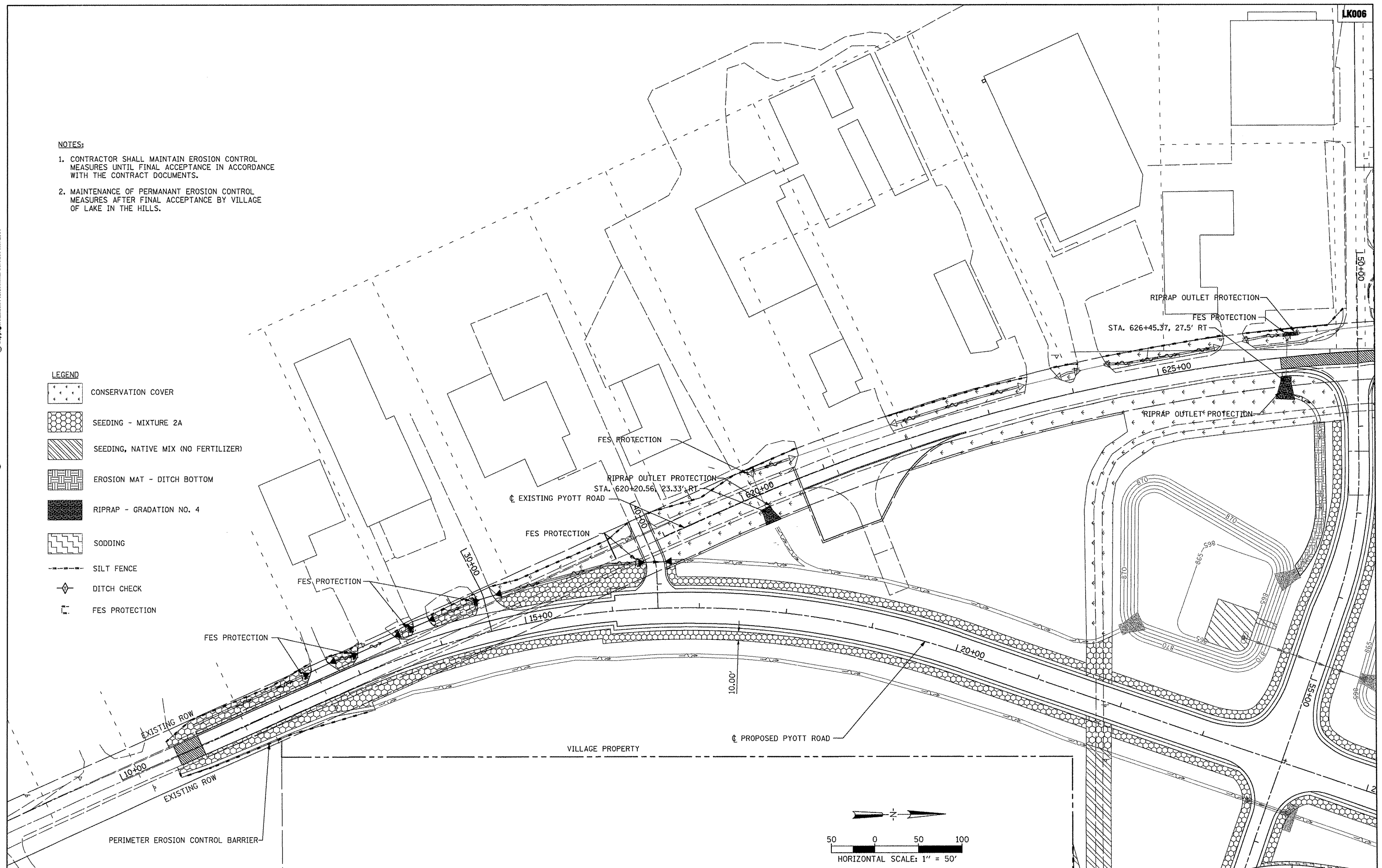
1. CONTRACTOR SHALL MAINTAIN EROSION CONTROL MEASURES UNTIL FINAL ACCEPTANCE IN ACCORDANCE WITH THE CONTRACT DOCUMENTS.
2. MAINTENANCE OF PERMANENT EROSION CONTROL MEASURES AFTER FINAL ACCEPTANCE BY VILLAGE OF LAKE IN THE HILLS.

Hanson Professional Services Inc.  
 Suite 200, 815 Commerce Drive  
 Oak Park, Illinois 60452  
 © Copyright Hanson Professional Services Inc. 2008



**LEGEND**

	CONSERVATION COVER
	SEEDING - MIXTURE 2A
	SEEDING, NATIVE MIX (NO FERTILIZER)
	EROSION MAT - DITCH BOTTOM
	RIPRAP - GRADATION NO. 4
	SODDING
	SILT FENCE
	DITCH CHECK
	FES PROTECTION



FILE NAME =	USER NAME = Blain01219	DESIGNED - SJM	REVISED -	<b>VILLAGE OF LAKE IN THE HILLS, ILLINOIS</b>	<b>PYOTT ROAD EROSION CONTROL PLAN</b>	COUNTY	TOTAL SHEETS	SHEET NO.
1:\05\jobs\00841\05b0021\civil part b\sheds\NC-ERCL.sht		DRAWN - SJM	REVISED -			MCHENRY	143	119
PLOT SCALE = 99.9998' / IN.		CHECKED - BLB	REVISED -					
PLOT DATE = 02/25/2009, 11:43 AM		DATE - 05/21/08	REVISED -					
					SCALE: 1"=50'	AIP No. 3-17-0112-B10 ILLINOIS IDA NO. 3CK-3807		