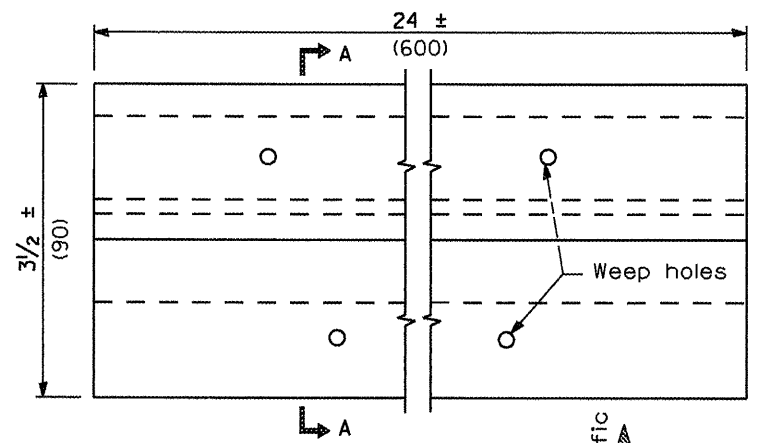


**TYPE A**  
ROOF MOUNTED

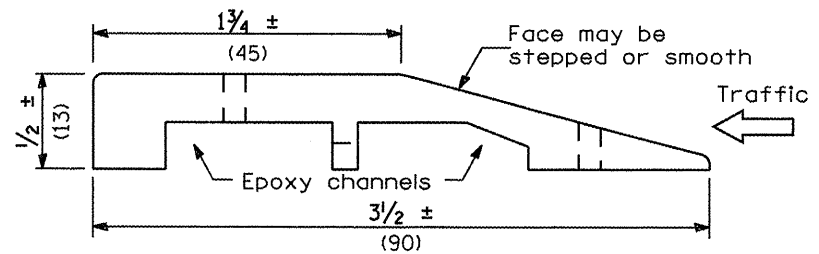
**TYPE B**  
ROOF OR TRAILER MOUNTED

**TYPE C**  
TRAILER MOUNTED

**ARROW BOARDS**

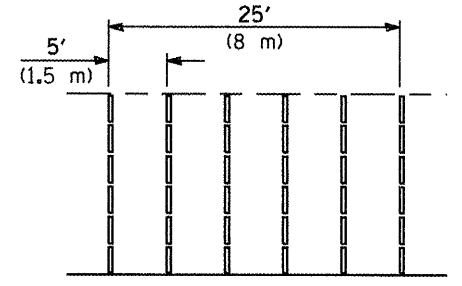
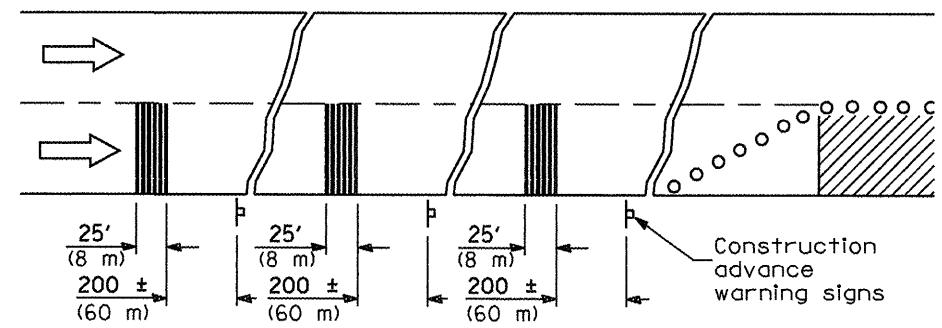


**PLAN**

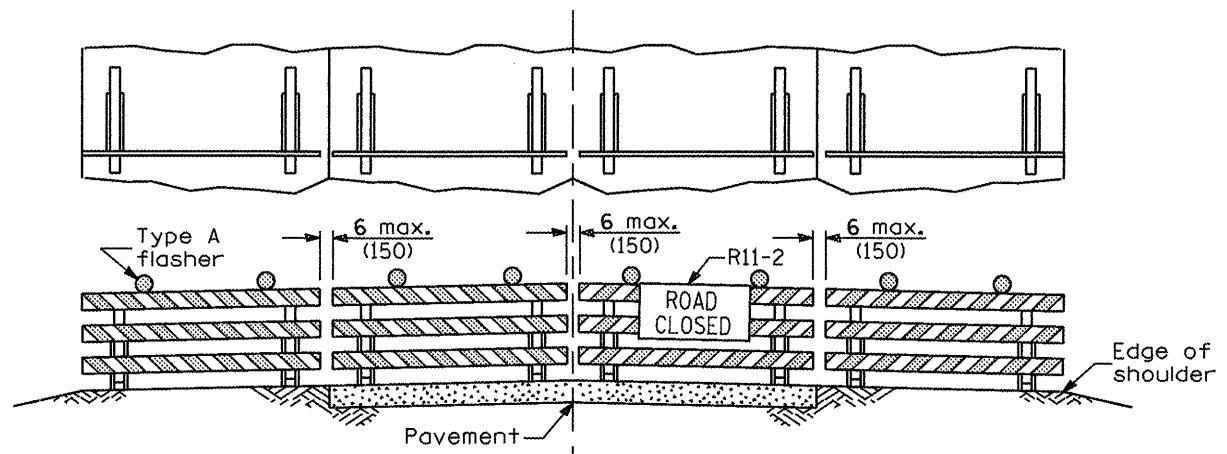


**SECTION A-A**

**TEMPORARY RUMBLE STRIPS**

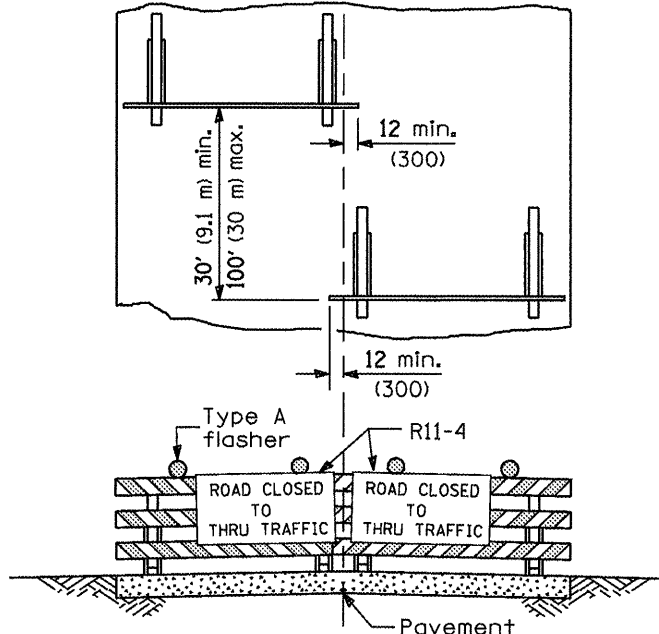


**TYPICAL INSTALLATION**



**ROAD CLOSED TO ALL TRAFFIC**

Reflectorized striping may be omitted on the back side of the barricades. If a Type III barricade with an attached sign panel which meets NCHRP 350 is not available, the sign may be mounted on an NCHRP 350 temporary sign support directly in front of the barricade.



**ROAD CLOSED TO THRU TRAFFIC**

Reflectorized striping shall appear on both sides of the barricades. If a Type III barricade with an attached sign panel which meets NCHRP 350 is not available, the signs may be mounted on NCHRP 350 temporary sign supports directly in front of the barricade.

All dimensions are in inches (millimeters) unless otherwise shown.

**TRAFFIC CONTROL DEVICES**

(Sheet 3 of 3)

**STANDARD 701901-01**

Illinois Department of Transportation

APPROVED January 1, 2009

ENGINEER OF OPERATIONS

APPROVED January 1, 2009

ENGINEER OF DESIGN AND ENVIRONMENT

ISSUED 1-8-09

**TYPICAL APPLICATIONS OF TYPE III BARRICADES CLOSING A ROAD**