

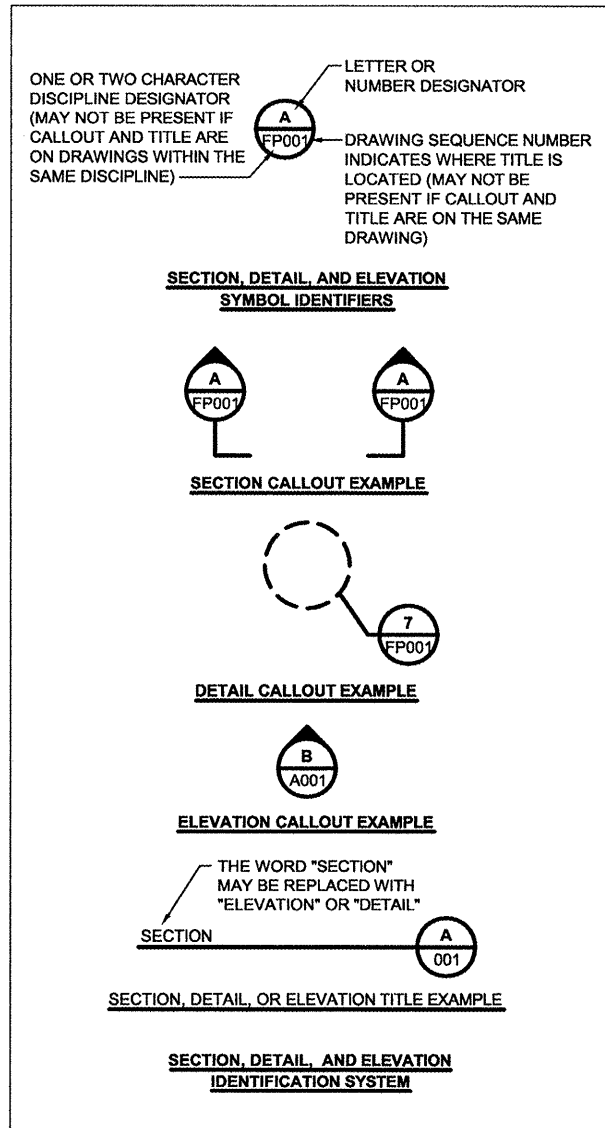
Rantoul National Aviation Center - Frank Elliott Field

RA013

no.	date	by	ckd	description
0	03/05/09	REL	BJQ	ISSUED FOR BID

LEGEND

EXISTING	NEW	
		RUNWAY EDGE LIGHT, STAKE MOUNTED
		ADJUST RUNWAY EDGE LIGHT, STAKE MOUNTED
		TRANSFORMER BASE CAN
		CABLE IN UNIT DUCT
		SANITARY SEWER FORCE MAIN (SSFM)
		STORM SEWER (ST)
		ELECTRICAL CONDUIT
		STORM SEWER MANHOLE / INLET
		TEMPORARY BENCHMARK
		DRAINAGE INLET
		VARIABLE DEPTH BITUMINOUS PAVEMENT MILLING
		PAVEMENT MARKING REMOVAL
		SHOULDER PREPARATION / BUTT JOINT CONSTRUCTION
		BITUMINOUS SURFACE COURSE
		5/8" POROUS FRICTION COURSE OVERLAY



ABBREVIATIONS

AOA	AIR OPERATIONS AREA
AWOS	AUTOMATED WEATHER OBSERVATION SYSTEM
BM	BENCHMARK
BVCE	BEGIN VERTICAL CURVE ELEVATION
BVCS	BEGIN VERTICAL CURVE STATION
CL	CENTERLINE
CLSM	CONTROLLED LOW STRENGTH MATERIAL
CM	CABLE MARKER
CY	CUBIC YARD
DM	DUCT MARKER
E	EAST
EA	EACH
EG	EXISTING GROUND
ELEV	ELEVATION
EVCE	END VERTICAL CURVE ELEVATION
EVCS	END VERTICAL CURVE STATION
FAA	FEDERAL AVIATION ADMINISTRATION
FG	FINISHED GRADE
FOD	FOREIGN OBJECT DEBRIS
FT	FEET
GAL	GALLON
GND	GROUND
GRSC	GALVANIZED RIGID STEEL CONDUIT
HORZ	HORIZONTAL
IDA	ILLINOIS DIVISION OF AERONAUTICS
IDOT	ILLINOIS DEPARTMENT OF TRANSPORTATION
INV	INVERT
LF	LINEAR FOOT
LS	SUMP SUM
LT	LEFT
MAX	MAXIMUM
MIN	MINIMUM
N	NORTH
NE	NORTHEAST
NO.	NUMBER
NW	NORTHWEST
NTS	NOT TO SCALE
OC	ON-CENTER
PAPI	PRECISION APPROACH PATH INDICATOR
PC	POINT OF CURVATURE
PT	POINT OF TANGENCY
PVC	POLYVINYL CHLORIDE
PVI	POINT OF VERTICAL INTERSECTION
R	RADIUS
RT	RIGHT
RW	RUNWAY
S	SOUTH
SCH	SCHEDULE
SSFM	SANITARY SEWER FORCE MAIN
ST	STORM SEWER
STA	STATION
SW	SOUTHWEST
SY	SQUARE YARD
TBM	TEMPORARY BENCHMARK
TW	TAXWAY
TYP	TYPICAL
UG	UNDERGROUND
UON	UNLESS OTHERWISE NOTED
VERT	VERTICAL
W	WEST

SUMMARY OF QUANTITIES

ITEM NO.	BID ITEM NO.	DESCRIPTION OF WORK	UNITS	ESTIMATED QUANTITY
1	AR150510	ENGINEER'S FIELD OFFICE	L.S.	1
2	AR150520	MOBILIZATION	L.S.	1
3	AR201661	CLEAN & SEAL BITUMINOUS CRACKS	L.F.	1,000
4	AR401610	BITUMINOUS SURFACE COURSE	TON	1,183
5	AR401620	BITUMINOUS SURFACE COURSE, LEVELING	TON	760
6	AR401650	BITUMINOUS PAVEMENT MILLING	S.Y.	8,532
7	AR401655	BUTT JOINT CONSTRUCTION	S.Y.	2,576
8	AR402620	POROUS FRICTION COURSE 5/8"	S.Y.	4,584
9	AR602510	BITUMINOUS PRIME COAT	GAL.	3,350
10	AR603510	BITUMINOUS TACK COAT	GAL.	1,600
11	AR620520	PAVEMENT MARKING-WATERBORNE	S.F.	14,700
12	AR620900	PAVEMENT MARKING REMOVAL	S.F.	2,100
13	AR751900	REMOVE INLET	EACH	4
14	AR803070	REMOVE AND REINSTALL MIRL, STAKE MOUNTED	EACH	8

INDEX OF DRAWINGS

SHEET NO.	DRAWING NO.	DRAWING TITLE
1 of 19	CVR	COVER SHEET
2 of 19	G001	INDEX OF DRAWINGS, SUMMARY OF QUANTITIES, LEGEND AND ABBREVIATIONS
3 of 19	G002	ACCESS AND SAFETY PLAN AND DETAILS
4 of 19	G003	ACCESS AND SAFETY NOTES AND GENERAL NOTES
5 of 19	C101	DEMOLITION PLAN
6 of 19	C201	SITE GEOMETRY PLAN
7 of 19	C301	PLAN AND PROFILE RUNWAY 18/36
8 of 19	C302	PLAN AND PROFILE RUNWAY 9/27
9 of 19	C401	GRADING PLAN
10 of 19	C501	PAVEMENT MARKING PLAN AND DETAILS
11 of 19	C601	TYPICAL SECTIONS AND CONSTRUCTION DETAILS
12 of 19	X101	CROSS SECTIONS RUNWAY 18/36
13 of 19	X102	CROSS SECTIONS RUNWAY 18/36
14 of 19	X103	CROSS SECTIONS RUNWAY 18/36
15 of 19	X104	CROSS SECTIONS RUNWAY 18/36
16 of 19	X105	CROSS SECTIONS RUNWAY 9/27
17 of 19	X106	CROSS SECTIONS RUNWAY 9/27
18 of 19	X107	CROSS SECTIONS RUNWAY 9/27
19 of 19	X108	CROSS SECTIONS RUNWAY 9/27



date	06/11/2008	detailed	R. LEE
designed	R. LEE	checked	B. QUINLAN



RANTOUL NATIONAL AVIATION CENTER
INDEX OF DRAWINGS, SUMMARY OF QUANTITIES, LEGEND AND ABBREVIATIONS

project	49089	contract	CONTRACT
---------	-------	----------	----------

drawing	G001	rev.	0
---------	-------------	------	----------

sheet	2	of	19	sheets
file	49089G001.DWG			

Scale For Micromining
Millimeters
Inches

COPYRIGHT © 2008 BURNS & MCDONNELL ENGINEERING COMPANY, INC.