

**SUMMARY OF QUANTITIES**

**CONSTRUCTION TYPE CODE**

ROADWAY  
90% FED (HSIP)  
10% STATE  
0004

TRAFFIC SIGNAL  
90% FED (HSIP)  
5% STATE  
2.5% COUNTY  
2.5% VILLAGE  
0021


CODE NO.	ITEM DESCRIPTION	UNIT	TOTAL QUANTITY	CONSTRUCTION TYPE CODE	
				ROADWAY	TRAFFIC SIGNAL
Z0010688	CAMERA MOUNTING ASSEMBLY	EACH	1		1
Z0013798	CONSTRUCTION LAYOUT	L SUM	1	1	
△ Z0018500	DRAINAGE STRUCTURES TO BE CLEANED	EACH	4	4	
Z0030850	TEMPORARY INFORMATION SIGNING	SQ FT	468	468	
Z0033046	RE-OPTIMIZE TRAFFIC SIGNAL SYSTEM LEVEL 2	EACH	1		1
<del>Z0033056</del>	<del>OPTIMIZE TRAFFIC SIGNAL SYSTEM</del>	<del>EACH</del>	<del>1</del>		<del>1</del>
Z0073510	TEMPORARY TRAFFIC SIGNAL TIMING	EACH	1		1
Z0076600	TRAINEES	HOUR	0		
* 86400100	TRANSCEIVER - FIBER OPTIC	EACH	1		1
* 87300925	ELECTRIC CABLE IN CONDUIT, TRACER, NO. 14 1C	FOOT	654		654
* 87900200	DRILL EXISTING HANDHOLE	EACH	2		2
* 89502350	REMOVE AND REINSTALL ELECTRIC CABLE FROM CONDUIT	FOOT	875		875
* X8710024	FIBER OPTIC CABLE IN CONDUIT, NO. 62.5/125, MM12F SM24F	FOOT	654		654

△ Rev. 4-6-15

\* SPECIALTY ITEM

△ NON-PARTICIPATION ITEMS (100% ST.)

P:\2014\ME14027\_VerVar\_Phil\W01\_US41\_DeLang\CADD\Sheet\03-DI\00V99-sht-500.dgn  
 FILE NAME  
 USER NAME  
 MILLENIA PROFESSIONAL SERVICES



2600 Warrsville Road, Suite 103, Downers Grove, IL 60515  
 630.785.8110 voice, 630.839.2500 fax  
 www.mps-il.com  
**MILLENNIA PROFESSIONAL SERVICES**

DESIGNED	MG	REVISED	-
DRAWN	MG/TVN	REVISED	-
CHECKED	TVN	REVISED	-
DATE	12/19/2014	REVISED	-

**STATE OF ILLINOIS  
DEPARTMENT OF TRANSPORTATION**

**US ROUTE 41 (SKOKIE HIGHWAY)  
SUMMARY OF QUANTITIES**

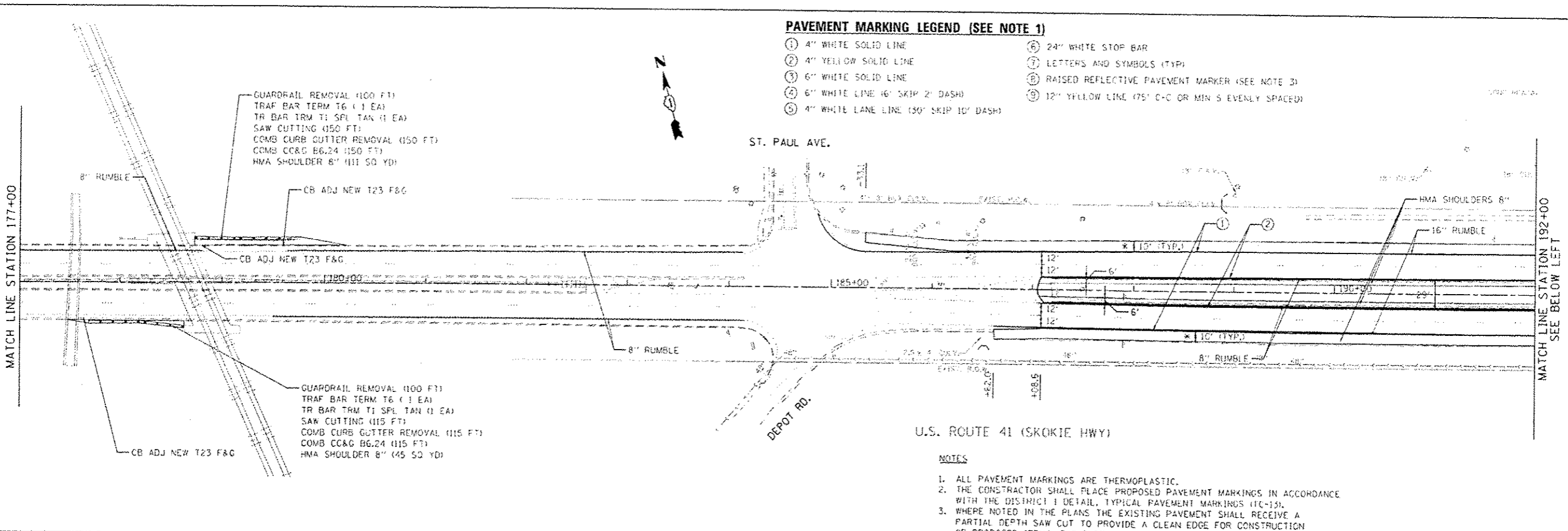
SCALE: SHEET NO. OF SHEETS STA. TO STA.

F.A.P. RTE.	SECTION	COUNTY	TOTAL SHEETS	SHEET NO.
346	2013-0531	LAKE	135	7B
FED. ROAD DIST. NO. 1 ILLINOIS FED. AID PROJECT			CONTRACT NO. 60W99	

P:\2014\ME14027\_VerVar\_Phil\W01\_US41\_DeLang\CADD\Sheet\03-DI\00V99-sht-500.dgn

**PAVEMENT MARKING LEGEND (SEE NOTE 1)**

- ① 4" WHITE SOLID LINE
- ② 4" YELLOW SOLID LINE
- ③ 6" WHITE SOLID LINE
- ④ 6" WHITE LINE (6' SKIP 2' DASH)
- ⑤ 4" WHITE LANE LINE (30' SKIP 10' DASH)
- ⑥ 24" WHITE STOP BAR
- ⑦ LETTERS AND SYMBOLS (TYP)
- ⑧ RAISED REFLECTIVE PAVEMENT MARKER (SEE NOTE 3)
- ⑨ 12" YELLOW LINE (75' C-C OR MIN 5 EVENLY SPACED)



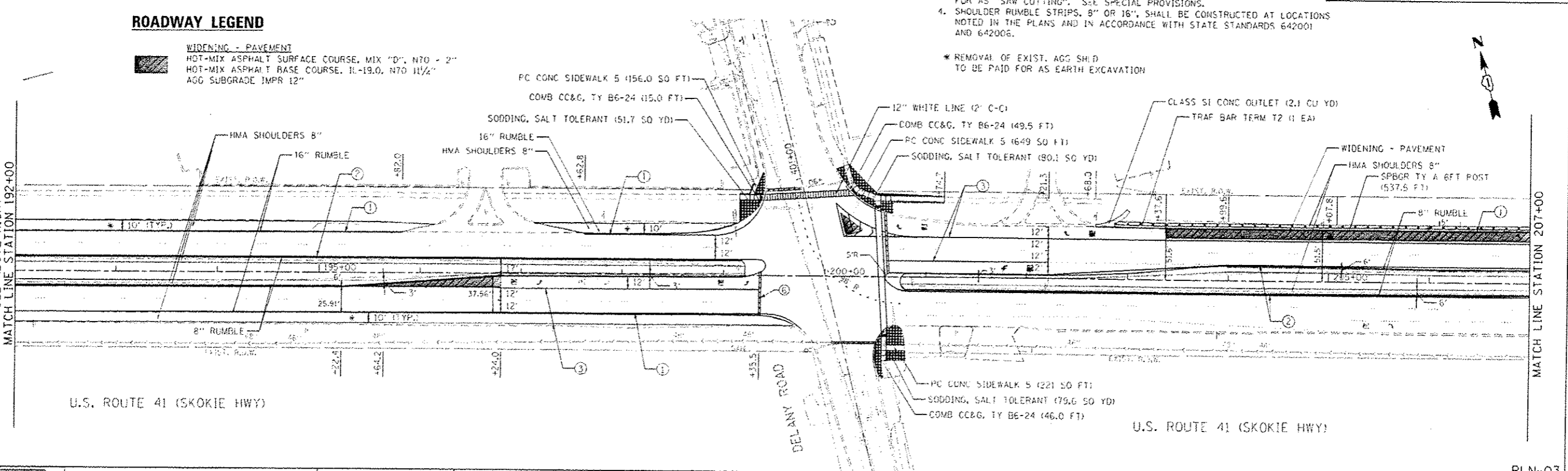
**NOTES**

1. ALL PAVEMENT MARKINGS ARE THERMOPLASTIC.
2. THE CONTRACTOR SHALL PLACE PROPOSED PAVEMENT MARKINGS IN ACCORDANCE WITH THE DISTRICT 1 DETAIL, TYPICAL PAVEMENT MARKINGS (TC-13).
3. WHERE NOTED IN THE PLANS THE EXISTING PAVEMENT SHALL RECEIVE A PARTIAL DEPTH SAW CUT TO PROVIDE A CLEAN EDGE FOR CONSTRUCTION OF PROPOSED ITEMS. THE PARTIAL DEPTH SAW CUT SHALL BE PAID FOR AS "SAW CUTTING". SEE SPECIAL PROVISIONS.
4. SHOULDER RUMBLE STRIPS, 8" OR 16", SHALL BE CONSTRUCTED AT LOCATIONS NOTED IN THE PLANS AND IN ACCORDANCE WITH STATE STANDARDS 642001 AND 642006.

\* REMOVAL OF EXIST. AGG SHLD TO BE PAID FOR AS EARTH EXCAVATION

**ROADWAY LEGEND**

- WIDENING - PAVEMENT**  
 HOT-MIX ASPHALT SURFACE COURSE, MIX "D", N70 - 2"  
 HOT-MIX ASPHALT BASE COURSE, 11-19.0, N70 1 1/2"  
 AGG SUBGRADE IMPR 12"



FILE NAME: P:\2013\11\192-207\11-192-207-PLN-03.dwg  
 PLOT SCALE: 1"=50'  
 PLOT DATE: 11/19/13  
 PLOT TIME: 10:10:10 AM  
 PLOT USER: mps

**MILLENNIA PROFESSIONAL SERVICES**  
 2600 Waukegan Road, Suite 103, Downers Grove, IL 60515  
 630.785.8110 voice, 630.838.2566 fax  
 www.mps-ill.com

DESIGNED	MG	REVISED	
DRAWN	MG/TVN	REVISED	
CHECKED	TVN	REVISED	
DATE	3/23/2015	REVISED	

**STATE OF ILLINOIS  
 DEPARTMENT OF TRANSPORTATION**

**US ROUTE 41 (SKOKIE HIGHWAY)  
 ROADWAY PLAN**

SCALE: 1"=50' SHEET NO. OF SHEETS STA. TO STA.

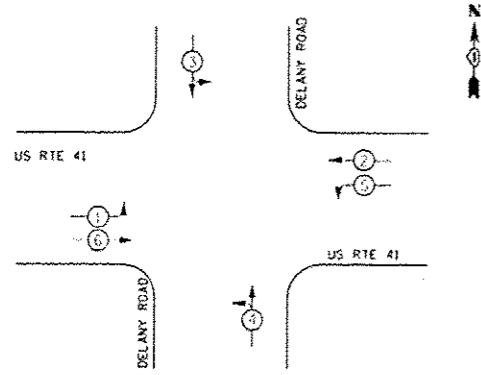
SECTION	COUNTY	TOTAL SHEETS	SHEET NO.
2013-0531	LAKE	136	14
CONTRACT NO.			60W99

PLN-03

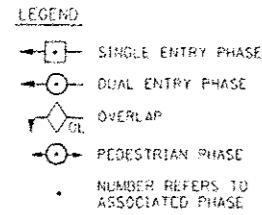
P:\2013\11\192-207\11-192-207-PLN-03.dwg



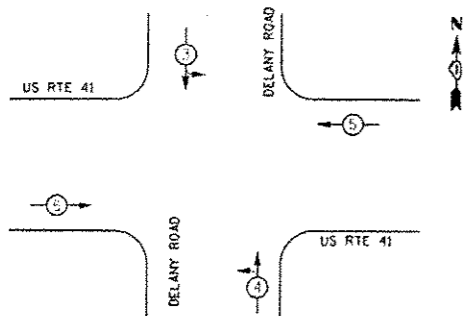
**PROPOSED CONTROLLER SEQUENCE**



**PHASE DESIGNATION DIAGRAM**



**EMERGENCY VEHICLE PREEMPTION SEQUENCE**



PROPOSED EMERGENCY VEHICLE PREEMPTORS			
EMERGENCY VEHICLE PREEMPTOR	3	4	5
MOVEMENT	↑	↑	↑

I.D.D.T TRAFFIC SIGNAL INSTALLATION ELECTRICAL SERVICE REQUIREMENTS					TOTAL WATTAGE
TYPE	NO. OF LAMPS	WATTAGE (E.E.D.)	OPERATION		
SIGNAL (RED)	12	17	0.50		102
(YELLOW)	12	25	0.25		75
(GREEN)	12	15	0.25		45
ARROW	16	12	0.10		19.2
PED. SIGNAL		25	1.00		
CONTROLLER	1	100	1.00		100
ILLUM. SIGN		120	0.05		
VIDEO SYSTEM	1	150	1.00		150
FLASHER			0.00		
				TOTAL	491.20

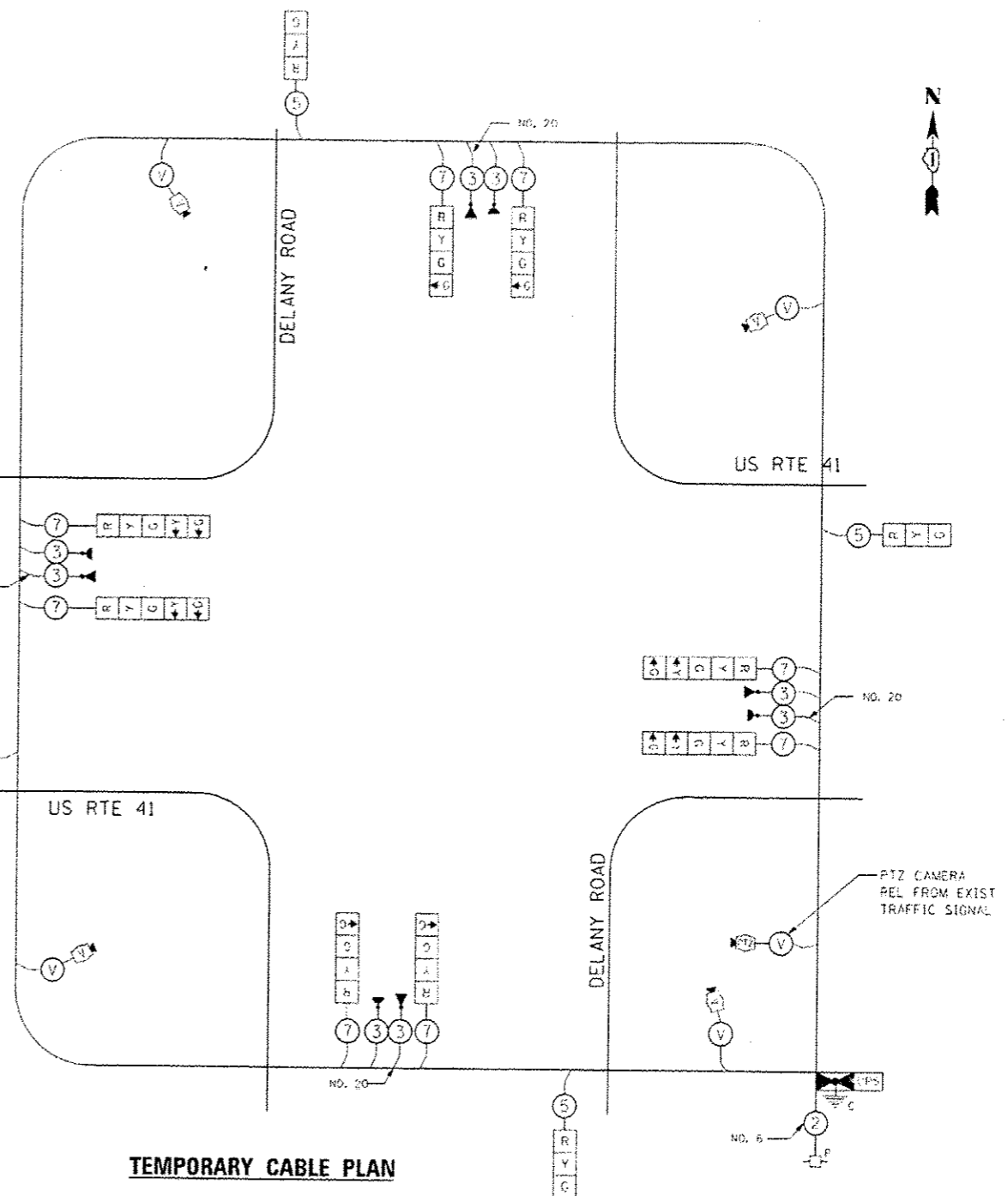
ILLINOIS DEPARTMENT OF TRANSPORTATION  
DIVISION OF HIGHWAYS-DISTRICT 1  
201 W. CENTER ST./SCHMIDT, IL 60106-1036

ENERGY SUPPLY - CONTACT: TERRI BLECK  
PHONE: 847-838-1500  
COMPANY: COMMERCIAL TR. EDISON

**NOTES FOR TEMPORARY TRAFFIC SIGNALS**

1. ALL CONTROL EQUIPMENT INCLUDING EMERGENCY PRE-EMPTION AND COMMUNICATION DEVICES FOR THE TEMPORARY TRAFFIC SIGNALS SHALL BE FURNISHED BY THE CONTRACTOR.
2. ONLY CONTROLLERS SUPPLIED BY ONE OF THE DISTRICT APPROVED CLOSED LOOP EQUIPMENT MANUFACTURERS WILL BE APPROVED FOR USE AT TEMPORARY SIGNAL LOCATIONS. ALL CONTROLLERS USED FOR MICROPROCESSOR BASE WITH RS232 DATA ENTRY PORTS COMPATIBLE WITH EXISTING MONITORING SOFTWARE APPROVED BY DOT DISTRICT 1 INSTALLED IN A NEMA TS1 OR TS2 CABINET. ONLY ONE BRAND OF CONTROLLER WILL BE ACCEPTED FOR ANY ONE CONTRACT.
3. ALL TRAFFIC SIGNAL SECTIONS AND PEDESTRIAN SIGNAL SECTIONS SHALL BE 12" HEADS SHALL BE PLACED AS INDICATED ON THE TEMPORARY TRAFFIC SIGNAL PLAN OR AS DIRECTED BY THE ENGINEER. THE CONTRACTOR SHALL FURNISH ENOUGH CABLE SLACK TO RELOCATE HEADS TO ANY POSITION ON THE SPAN WIRE OR AT LOCATIONS ILLUSTRATED ON THE PLANS FOR CONSTRUCTION STAGING. THE TEMPORARY TRAFFIC SIGNAL SHALL REMAIN IN OPERATION DURING ALL SIGNAL HEAD RELOCATIONS. EACH TEMPORARY TRAFFIC SIGNAL HEAD SHALL HAVE ITS OWN CABLE FROM THE CONTROLLER CABINET TO THE SIGNAL HEAD.
4. ALL EXISTING STREET NAME AND INTERSECTION REGULATORY SIGNS SHALL BE REMOVED FROM EXISTING POLES, RELOCATED AND SECURELY FASTENED TO THE SIGNAL SPAN WIRE OR WOOD POLE AS DIRECTED BY THE ENGINEER.
5. ANY TEMPORARY SIGNAL WITHIN AN EXISTING CLOSED LOOP TRAFFIC SIGNAL SYSTEM SHALL BE INTERCONNECTED TO THAT SYSTEM USING SIMILAR BRAND CONTROL EQUIPMENT.
6. THE TEMPORARY TRAFFIC SIGNAL SHALL HAVE THE SIGNAL HEAD DISPLAYS, SIGNAL HEAD PLACEMENTS AND CONTROLLER PHASING MATCH THE EXISTING TRAFFIC STAGING ARE IN PLACE OR WILL NOT BE STAGED ON THE DAY OF THE TURN ON.
7. UNINTERRUPTIBLE POWER SUPPLY (UPS) SYSTEMS SHALL BE INSTALLED AND MADE OPERATIONAL AT TEMPORARY TRAFFIC SIGNAL INSTALLATIONS WHERE UPS IS INSTALLED AT THE EXISTING TRAFFIC SIGNAL, TEMPORARY TRAFFIC SIGNALS AT RAILROAD INTERSECTIONS, AND TEMPORARY TRAFFIC SIGNALS AT INTERSECTIONS WITH FIRE STATION ACTUATED EMERGENCY VEHICLE PRE-EMPTION, OR WHEN INDICATED ON THE PLANS.
8. TRAFFIC SIGNAL MANAGEMENT SYSTEMS SHALL BE MAINTAINED IN OPERATION AS INDICATED ON THE PLANS OR AS DIRECTED BY THE ENGINEER. REQUIRED EQUIPMENT SHALL BE AS SHOWN ON THE PLANS AND THE CONTRACTOR SHALL PLACE THE EQUIPMENT IN OPERATION TO THE SATISFACTION OF THE ENGINEER AND THE AGENCY RESPONSIBLE FOR THE TRAFFIC SIGNAL MANAGEMENT SYSTEM.
9. DETECTION AT TEMPORARY TRAFFIC SIGNALS SHALL BE INCLUDED FOR ALL APPROACHES OF THE INTERSECTION UNLESS INDICATED OTHERWISE ON THE PLANS. THE DETECTION SYSTEM MUST MEET THE SPECIFICATIONS OF DISTRICT 1 AND THE CONTRACTOR SHALL PLACE THE DETECTORS INTO OPERATION TO THE SATISFACTION OF THE ENGINEER.
10. WHEN PAN, TILT, ZOOM CAMERAS ARE INSTALLED AT THE EXISTING INTERSECTION OR ARE CALLED FOR THE PLANS, THE CONTRACTOR SHALL BE RESPONSIBLE FOR INSTALLING AND MAINTAINING THE CAMERAS TO THE SATISFACTION OF THE ENGINEER AND THE AGENCY RESPONSIBLE FOR THE CAMERAS.

THE TRAFFIC SIGNAL CONTROL EQUIPMENT FOR THIS TEMPORARY SIGNAL SHALL BE "ECONOLITE" NJCIP (LATEST VERSION) TO MATCH THE EXISTING ADJACENT SYSTEM.



**TEMPORARY CABLE PLAN**

**CONSTRUCTION NOTES**

1. TEMPORARY OVERHEAD INTERCONNECT INTALLED SEE TEMPORARY INTERCONNECT PLAN

FILE NAME: I:\PROJECTS\2013\2013-05-01\Delany\SCHEMATIC\Delany\_Schematic.dwg  
 PLOT SCALE: 1/8"=1'-0"  
 PLOT DATE: 3/24/2015 10:58:11 AM  
 MILLENIA PROFESSIONAL SERVICES

2690 Warrsville Road, Suite 203, Downers Grove, IL 60515  
630.785.0110 voice, 630.821.2544 fax  
www.mps-ill.com

**MILLENNIA PROFESSIONAL SERVICES**

DESIGNED - ME	REVISED -
DRAWN - MG/TVM	REVISED -
CHECKED - TVN	REVISED -
DATE - 3/24/2015	REVISED -

**STATE OF ILLINOIS  
DEPARTMENT OF TRANSPORTATION**

**US ROUTE 41 (SKOKIE HIGHWAY)  
TEMPORARY TRAFFIC SIGNAL CABLE PLAN, PHASE DESIGNATION DIAGRAM  
AND EMERGENCY VEHICLE PREEMPTION SEQUENCE**

SCALE: SHEET NO. OF SHEETS STA. TO STA.

DATE	SECTION	COUNTY	TOTAL SHEETS	SHEET NO.
3/24/2015	2013-05-01	LAKE	11K	9R

CONTRACT NO. 60W99

FILE NAME: I:\PROJECTS\2013\2013-05-01\Delany\SCHEMATIC\Delany\_Schematic.dwg

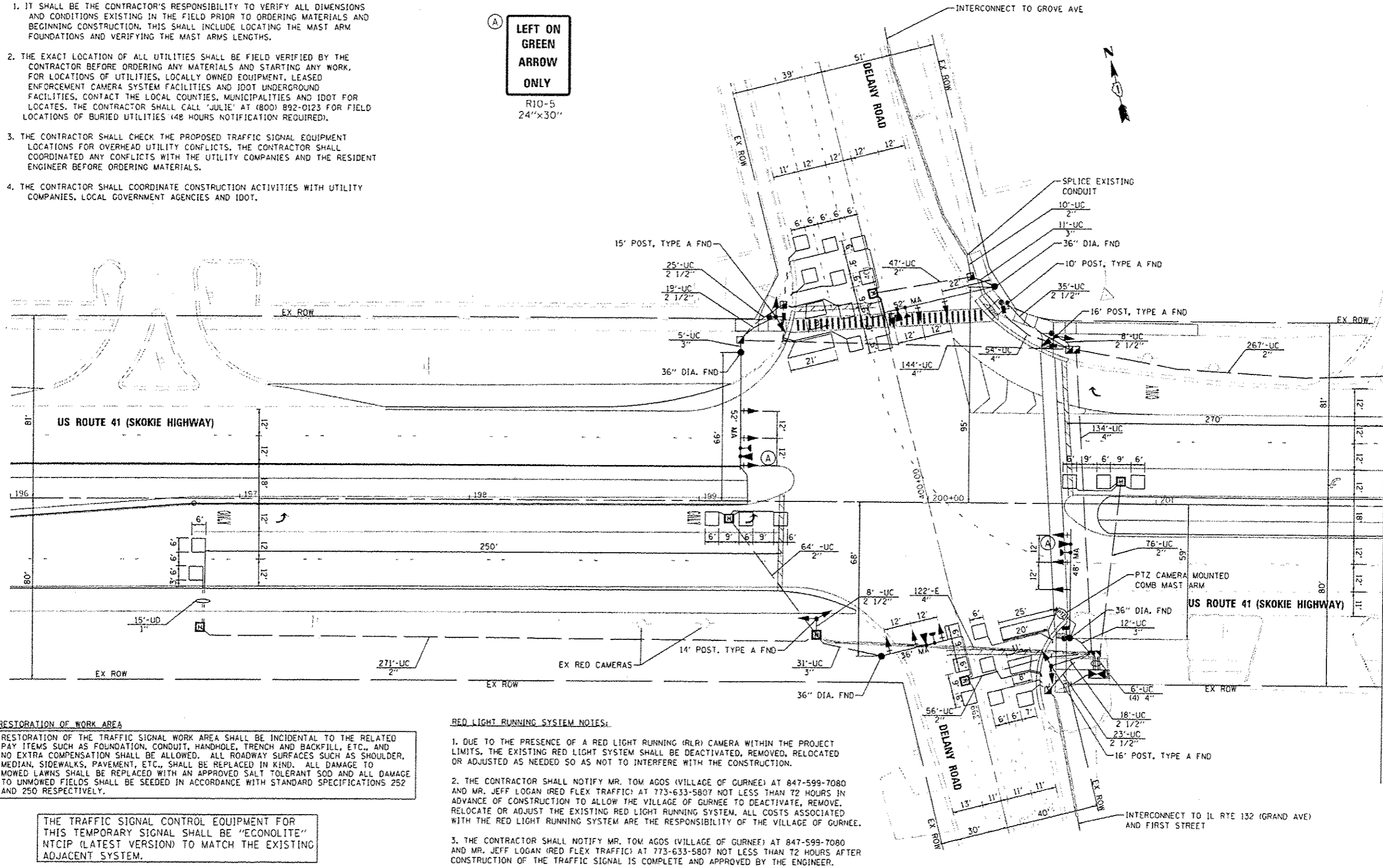




**GENERAL NOTES**

- IT SHALL BE THE CONTRACTOR'S RESPONSIBILITY TO VERIFY ALL DIMENSIONS AND CONDITIONS EXISTING IN THE FIELD PRIOR TO ORDERING MATERIALS AND BEGINNING CONSTRUCTION. THIS SHALL INCLUDE LOCATING THE MAST ARM FOUNDATIONS AND VERIFYING THE MAST ARM LENGTHS.
- THE EXACT LOCATION OF ALL UTILITIES SHALL BE FIELD VERIFIED BY THE CONTRACTOR BEFORE ORDERING ANY MATERIALS AND STARTING ANY WORK. FOR LOCATIONS OF UTILITIES, LOCALLY OWNED EQUIPMENT, LEASED ENFORCEMENT CAMERA SYSTEM FACILITIES AND JOOT UNDERGROUND FACILITIES, CONTACT THE LOCAL COUNTIES, MUNICIPALITIES AND IDOT FOR LOCATES. THE CONTRACTOR SHALL CALL 'JULIE' AT (800) 892-0123 FOR FIELD LOCATIONS OF BURIED UTILITIES (48 HOURS NOTIFICATION REQUIRED).
- THE CONTRACTOR SHALL CHECK THE PROPOSED TRAFFIC SIGNAL EQUIPMENT LOCATIONS FOR OVERHEAD UTILITY CONFLICTS. THE CONTRACTOR SHALL COORDINATE ANY CONFLICTS WITH THE UTILITY COMPANIES AND THE RESIDENT ENGINEER BEFORE ORDERING MATERIALS.
- THE CONTRACTOR SHALL COORDINATE CONSTRUCTION ACTIVITIES WITH UTILITY COMPANIES, LOCAL GOVERNMENT AGENCIES AND IDOT.

**LEFT ON GREEN ARROW ONLY**  
R10-5  
24"x30"



**RESTORATION OF WORK AREA**

RESTORATION OF THE TRAFFIC SIGNAL WORK AREA SHALL BE INCIDENTAL TO THE RELATED PAY ITEMS SUCH AS FOUNDATION, CONDUIT, HANDHOLE, TRENCH AND BACKFILL, ETC., AND NO EXTRA COMPENSATION SHALL BE ALLOWED. ALL ROADWAY SURFACES SUCH AS SHOULDER, MEDIAN, SIDEWALKS, PAVEMENT, ETC., SHALL BE REPLACED IN KIND. ALL DAMAGE TO MOWED LAWNS SHALL BE REPLACED WITH AN APPROVED SALT TOLERANT SOD AND ALL DAMAGE TO UNMOWED FIELDS SHALL BE SEEDED IN ACCORDANCE WITH STANDARD SPECIFICATIONS 252 AND 250 RESPECTIVELY.

THE TRAFFIC SIGNAL CONTROL EQUIPMENT FOR THIS TEMPORARY SIGNAL SHALL BE "ECONOLITE" NTCIP (LATEST VERSION) TO MATCH THE EXISTING ADJACENT SYSTEM.

**RED LIGHT RUNNING SYSTEM NOTES:**

- DUE TO THE PRESENCE OF A RED LIGHT RUNNING (RLR) CAMERA WITHIN THE PROJECT LIMITS, THE EXISTING RED LIGHT SYSTEM SHALL BE DEACTIVATED, REMOVED, RELOCATED OR ADJUSTED AS NEEDED SO AS NOT TO INTERFERE WITH THE CONSTRUCTION.
- THE CONTRACTOR SHALL NOTIFY MR. TOM AGOS (VILLAGE OF GURNEE) AT 847-599-7080 AND MR. JEFF LOGAN (RED FLEX TRAFFIC) AT 773-633-5807 NOT LESS THAN 72 HOURS IN ADVANCE OF CONSTRUCTION TO ALLOW THE VILLAGE OF GURNEE TO DEACTIVATE, REMOVE, RELOCATE OR ADJUST THE EXISTING RED LIGHT RUNNING SYSTEM. ALL COSTS ASSOCIATED WITH THE RED LIGHT RUNNING SYSTEM ARE THE RESPONSIBILITY OF THE VILLAGE OF GURNEE.
- THE CONTRACTOR SHALL NOTIFY MR. TOM AGOS (VILLAGE OF GURNEE) AT 847-599-7080 AND MR. JEFF LOGAN (RED FLEX TRAFFIC) AT 773-633-5807 NOT LESS THAN 72 HOURS AFTER CONSTRUCTION OF THE TRAFFIC SIGNAL IS COMPLETE AND APPROVED BY THE ENGINEER.

FILE NAME: P:\2014\140272\Drawings\140272-Traffic Signal\140272-Traffic Signal\140272-Traffic Signal\140272-Traffic Signal.dwg  
 PLOT SCALE: 1"=20'  
 PLOT DATE: 3/20/2015 10:58:00 AM  
 PLOT BY: J. M. MILLER



2600 Warrenville Road, Suite 203, Downers Grove, IL 60515  
 630.765.8110 voice, 630.939.2500 fax  
 www.mpsvill.com  
**MILLENNIA PROFESSIONAL SERVICES**

DESIGNED - MG	REVISED -
DRAWN - MC/TVN	REVISED -
CHECKED - TVN	REVISED -
DATE - 3/20/2015	REVISED -

**STATE OF ILLINOIS  
DEPARTMENT OF TRANSPORTATION**

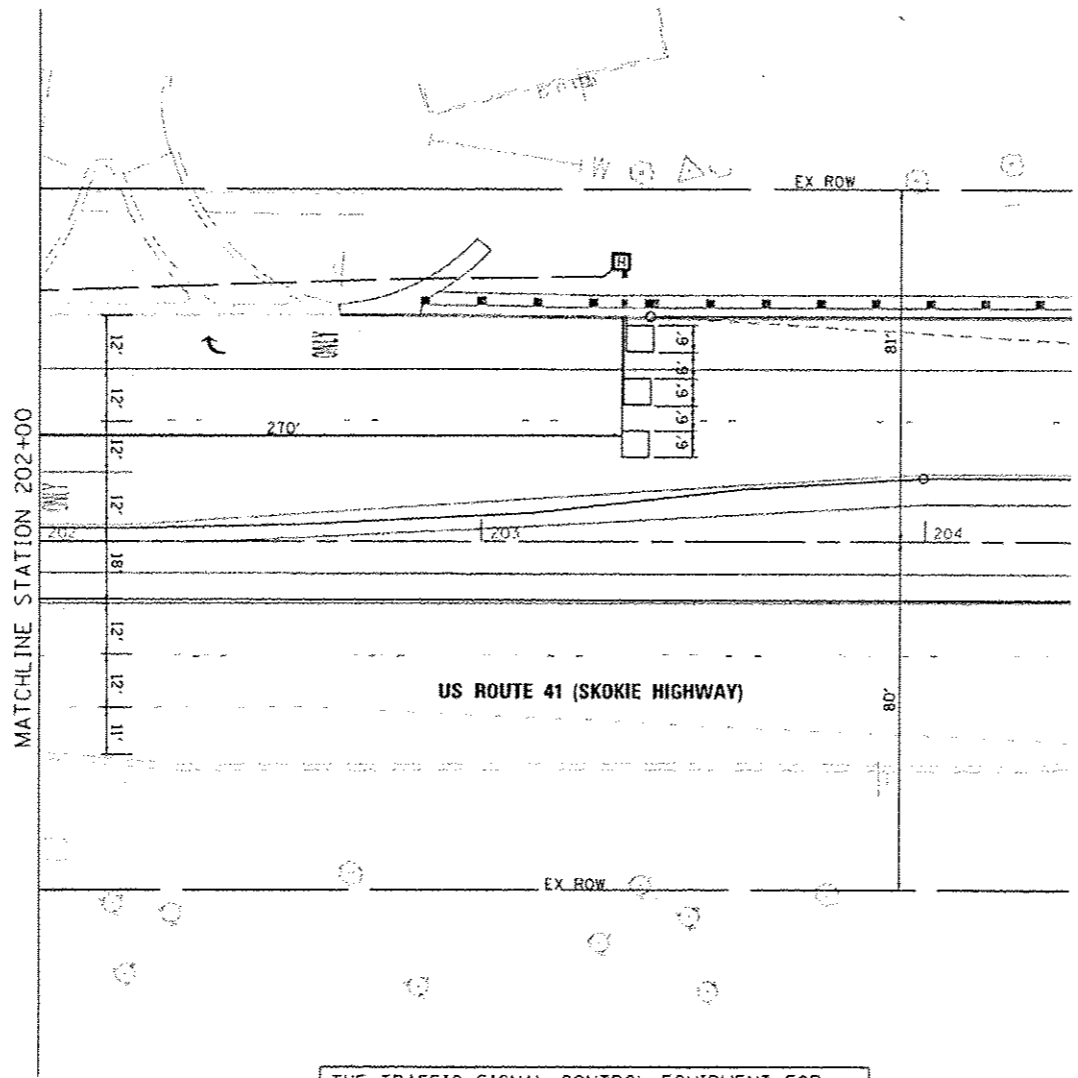
**US ROUTE 41 (SKOKIE HIGHWAY) AT DELANY ROAD**  
 TRAFFIC SIGNAL INSTALLATION PLAN  
 SCALE: 1"=20' SHEET NO. OF SHEETS STA. TO STA.

F.A.P. R.T.E.	SECTION	COUNTY	TOTAL SHEETS	SHEET NO.
346	2013-0531	LAKE	135	101
FED. ROAD DIST. NO. 1 (ILLINOIS) FED. AID PROJECT			CONTRACT NO. 60W99	

PL 2014 04 140272 Drawings 140272-Traffic Signal\140272-Traffic Signal\140272-Traffic Signal.dwg

**GENERAL NOTES**

1. IT SHALL BE THE CONTRACTOR'S RESPONSIBILITY TO VERIFY ALL DIMENSIONS AND CONDITIONS EXISTING IN THE FIELD PRIOR TO ORDERING MATERIALS AND BEGINNING CONSTRUCTION. THIS SHALL INCLUDE LOCATING THE MAST ARM FOUNDATIONS AND VERIFYING THE MAST ARMS LENGTHS.
2. THE EXACT LOCATION OF ALL UTILITIES SHALL BE FIELD VERIFIED BY THE CONTRACTOR BEFORE ORDERING ANY MATERIALS AND STARTING ANY WORK. FOR LOCATIONS OF UTILITIES, LOCALLY OWNED EQUIPMENT, LEASED ENFORCEMENT CAMERA SYSTEM FACILITIES AND IDOT UNDERGROUND FACILITIES, CONTACT THE LOCAL COUNTIES, MUNICIPALITIES AND IDOT FOR LOCATES. THE CONTRACTOR SHALL CALL 'JULIE' AT (800) 892-0123 FOR FIELD LOCATIONS OF BURIED UTILITIES (48 HOURS NOTIFICATION REQUIRED).
3. THE CONTRACTOR SHALL CHECK THE PROPOSED TRAFFIC SIGNAL EQUIPMENT LOCATIONS FOR OVERHEAD UTILITY CONFLICTS. THE CONTRACTOR SHALL COORDINATE ANY CONFLICTS WITH THE UTILITY COMPANIES AND THE RESIDENT ENGINEER BEFORE ORDERING MATERIALS.
4. THE CONTRACTOR SHALL COORDINATE CONSTRUCTION ACTIVITIES WITH UTILITY COMPANIES, LOCAL GOVERNMENT AGENCIES AND IDOT.




**RESTORATION OF WORK AREA**

RESTORATION OF THE TRAFFIC SIGNAL WORK AREA SHALL BE INCIDENTAL TO THE RELATED PAY ITEMS SUCH AS FOUNDATION, CONDUIT, HANDHOLE, TRENCH AND BACKFILL, ETC., AND NO EXTRA COMPENSATION SHALL BE ALLOWED. ALL ROADWAY SURFACES SUCH AS SHOULDER, MEDIAN, SIDEWALKS, PAVEMENT, ETC., SHALL BE REPLACED IN KIND. ALL DAMAGE TO MOWED LAWNS SHALL BE REPLACED WITH AN APPROVED SALT TOLERANT SOG AND ALL DAMAGE TO UNMOWED FIELDS SHALL BE SEEDED IN ACCORDANCE WITH STANDARD SPECIFICATIONS 252 AND 250 RESPECTIVELY.

THE TRAFFIC SIGNAL CONTROL EQUIPMENT FOR THIS TEMPORARY SIGNAL SHALL BE "ECONOLITE" NTCIP (LATEST VERSION) TO MATCH THE EXISTING ADJACENT SYSTEM.



FILE NAME: I:\PROJECTS\2013\2013-0531\2013-0531-01\2013-0531-01-SHT 102.dwg  
 PLOT SCALE: 1"=20'  
 USER NAME: M:\Users\mpe\Documents\Professional


 2400 Warronsville Road, Suite 200, Downers Grove, IL 60515  
 630.765.8110 voice, 630.839.2660 fax  
 www.mpi-il.com  
**MILLENNIA PROFESSIONAL SERVICES**

DESIGNED	- MC	REVISED	-
DRAWN	- MG/TYN	REVISED	-
CHECKED	- TVN	REVISED	-
DATE	- 3/20/2015	REVISED	-

**STATE OF ILLINOIS**  
**DEPARTMENT OF TRANSPORTATION**

**US ROUTE 41 (SKOKIE HIGHWAY)**  
**TRAFFIC SIGNAL INSTALLATION PLAN**

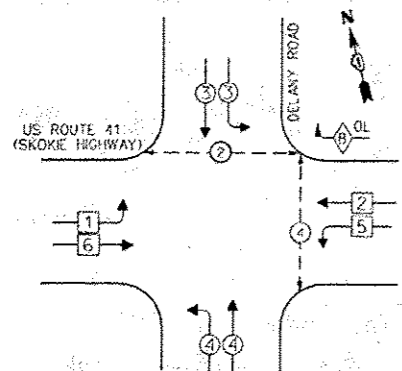
SCALE: 1"=20'    SHEET NO. OF SHEETS    STA. TO STA.

F.A.P. RTE.	SECTION	COUNTY	TOTAL SHEETS	SHEET NO.
346	2013-0531	LAKE	135	102
FED. ROAD DIST. NO. 1 (ILLINOIS) FED. AID PROJECT			CONTRACT NO. 60W99	

PL2014 (SHEET) 2013-0531.dwg

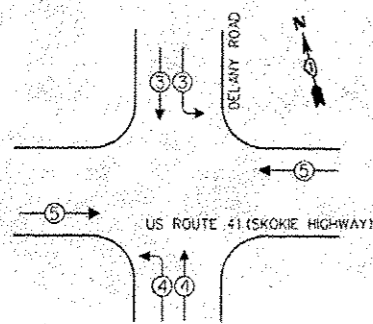


**PROPOSED CONTROLLER SEQUENCE**



**PHASE DESIGNATION DIAGRAM**

**EMERGENCY VEHICLE PREEMPTION SEQUENCE**



**LEGEND**

- ◻ SINGLE ENTRY PHASE
- ◻ DUAL ENTRY PHASE
- ◻ OVERLAP
- ◻ PEDESTRIAN PHASE
- NUMBER REFERS TO ASSOCIATED PHASE

OVERLAP LETTER	PERMISSIVE PHASE	PROTECTED PHASE
B	2	3

PROPOSED EMERGENCY VEHICLE PREEMPTORS			
EMERGENCY VEHICLE PREEMPTOR	5	3	4
MOVEMENT	=	14	71

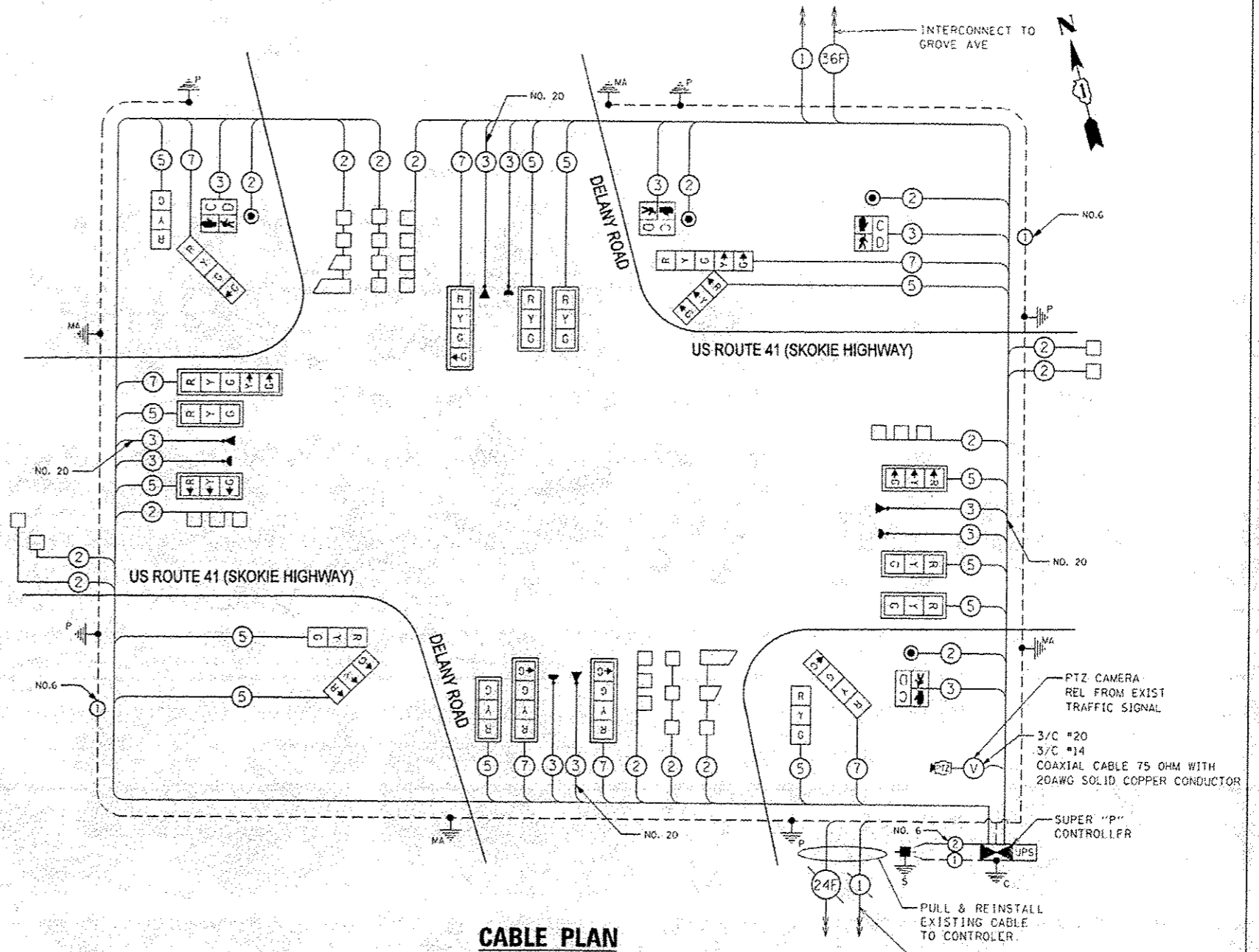
I.D.O.T. TRAFFIC SIGNAL INSTALLATION ELECTRICAL SERVICE REQUIREMENTS				TOTAL WATTAGE
TYPE	NO. OF LAMPS	WATTAGE I.D.O.	OPERATION	
SIGNAL (RED)	20	17	0.50	170.00
(YELLOW)	20	25	0.25	125.00
(GREEN)	25	15	0.25	93.80
ARROW	4	12	0.10	4.80
PED. SIGNAL	4	25	1.00	100.00
CONTROLLER	1	100	1.00	100.00
ILLUM. SIGN		120	0.05	
VIDEO SYSTEM	1	150	1.00	150.00
FLASHER			0.50	
TOTAL				743.6

ILLINOIS DEPARTMENT OF TRANSPORTATION  
DIVISION OF HIGHWAYS/DISTRICT 1  
201 W. CENTER CT/SCHAUMBURG, IL 60196-1096

ENERGY SUPPLY - CONTACT: TERRI BLECK  
PHONE: 847-816-1500  
COMPANY: COMMONWEALTH EDISON

THE END OF THE TRACER CABLE SHALL BE CONTINUOUS AND EXTEND INTO THE CABINET.

THE TRAFFIC SIGNAL CONTROL EQUIPMENT FOR THIS TEMPORARY SIGNAL SHALL BE "ECONOLITE" NTCIP (LATEST VERSION) TO MATCH THE EXISTING ADJACENT SYSTEM.



**CABLE PLAN**

P:\PROJECTS\4257\4257.dwg - P:\PROJECTS\4257\4257.dwg  
 PLOT SCALE: 1/8" = 1'-0"  
 USER: JMS



3699 Warrville Road, Suite 203, Downers Grove, IL 60515  
630.763.8110 voice, 630.839.2566 fax  
www.mps-ill.com

**MILLENNIA PROFESSIONAL SERVICES**

DESIGNED - MS	REVISED -
DRAWN - MG/TVN	REVISED -
CHECKED - TVN	REVISED -
DATE -	REVISED -

**STATE OF ILLINOIS**  
**DEPARTMENT OF TRANSPORTATION**

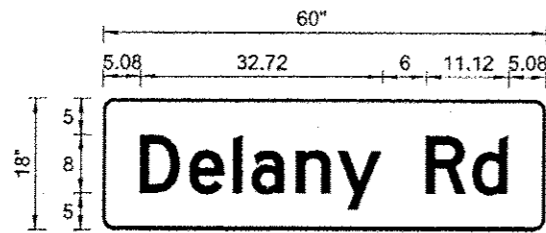
**US ROUTE 41 (SKOKIE HIGHWAY) AT DELANY ROAD**  
**CABLE PLAN, PHASE DESIGNATION DIAGRAM,**  
**AND EMERGENCY VEHICLE PREEMPTION SEQUENCE**

SCALE: SHEET NO. OF SHEETS STA. TO STA.

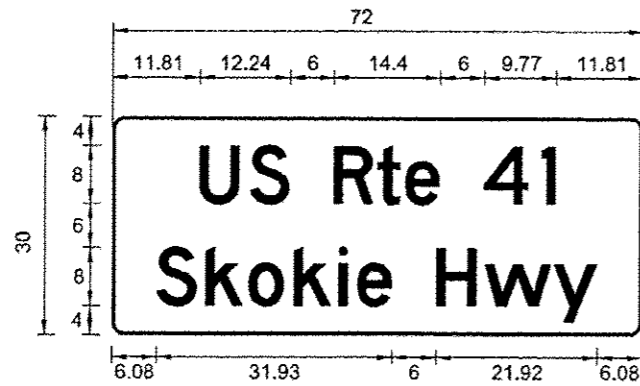
P.A.P. RTE. 346	SECTION 2013-0531	COUNTY LAKE	TOTAL SHEETS 135	SHEET NO. 103
CONTRACT NO. 60W99			ILLINOIS FED. AID PROJECT	

P:\PROJECTS\4257\4257.dwg - P:\PROJECTS\4257\4257.dwg

**SIGN PANEL – TYPE 1 AND TYPE 2**



DESIGN SERIES	AREA (SQ FT)	SIGN PANEL TYPE	SHEETING TYPE	QTY REQUIRED
D	7.50	1	ZZ	2



DESIGN SERIES	AREA (SQ FT)	SIGN PANEL TYPE	SHEETING TYPE	QTY REQUIRED
D	15.00	2	ZZ	2

**SCHEDULE OF QUANTITIES**

ITEM DESCRIPTION	UNITS	TOTAL QUANTITY
SIGN PANEL - TYPE 1	SQ FT	25
SIGN PANEL - TYPE 2	SQ FT	30
SERVICE INSTALLATION - POLE MOUNTED	EACH	1
UNDERGROUND CONDUIT, GALVANIZED STEEL, 2" DIA.	FOOT	791
UNDERGROUND CONDUIT, GALVANIZED STEEL, 2 1/2" DIA.	FOOT	136
UNDERGROUND CONDUIT, GALVANIZED STEEL, 3" DIA.	FOOT	59
UNDERGROUND CONDUIT, GALVANIZED STEEL, 4" DIA.	FOOT	424
HANDHOLE	EACH	2
HEAVY-DUTY HANDHOLE	EACH	7
DOUBLE HANDHOLE	EACH	2
TRANSCEIVER - FIBER OPTIC	EACH	1
ELECTRIC CABLE IN CONDUIT, SIGNAL, NO. 14 2C	FOOT	799
ELECTRIC CABLE IN CONDUIT, SIGNAL, NO. 14 3C	FOOT	1796
ELECTRIC CABLE IN CONDUIT, SIGNAL, NO. 14 5C	FOOT	2871
ELECTRIC CABLE IN CONDUIT, SIGNAL, NO. 14 7C	FOOT	1771
ELECTRIC CABLE IN CONDUIT, LEAD-IN, NO. 14 1 PAIR	FOOT	2384
ELECTRIC CABLE IN CONDUIT, SERVICE, NO. 6 2 C	FOOT	88
ELECTRIC CABLE IN CONDUIT, EQUIPMENT GROUNDING CONDUCTOR, NO. 6 1C	FOOT	1842
TRAFFIC SIGNAL POST, GALVANIZED STEEL 10 FT.	EACH	1
TRAFFIC SIGNAL POST, GALVANIZED STEEL 14 FT.	EACH	1
TRAFFIC SIGNAL POST, GALVANIZED STEEL 15 FT.	EACH	1
TRAFFIC SIGNAL POST, GALVANIZED STEEL 16 FT.	EACH	2
STEEL MAST ARM ASSEMBLY AND POLE, 36 FT.	EACH	1
STEEL MAST ARM ASSEMBLY AND POLE, 52 FT.	EACH	2
STEEL COMBINATION MAST ARM ASSEMBLY AND POLE 48 FT.	EACH	1
CONCRETE FOUNDATION, TYPE A	FOOT	20
CONCRETE FOUNDATION, TYPE C	FOOT	4
CONCRETE FOUNDATION, TYPE E 36-INCH DIAMETER	FOOT	54
SIGNAL HEAD, LED, 1-FACE, 3-SECTION, MAST-ARM MOUNTED	EACH	8
SIGNAL HEAD, LED, 1-FACE, 4-SECTION, MAST-ARM MOUNTED	EACH	3
SIGNAL HEAD, LED, 1-FACE, 5-SECTION, MAST-ARM MOUNTED	EACH	1
SIGNAL HEAD, LED, 2-FACE, 3-SECTION, BRACKET MOUNTED	EACH	1
SIGNAL HEAD, LED, 2-FACE, 1-3 SECTION, 1-4 SECTION, BRACKET MOUNTED	EACH	2
SIGNAL HEAD, LED, 2-FACE, 1-3 SECTION, 1-5 SECTION, BRACKET MOUNTED	EACH	1
PEDESTRIAN SIGNAL HEAD, LED, 1-FACE, BRACKET MOUNTED WITH COUNTDOWN TIMER	EACH	4
TRAFFIC SIGNAL BACKPLATE, ALUMINUM	EACH	12
INDUCTIVE LOOP DETECTOR	EACH	10
DETECTOR LOOP, TYPE I	FOOT	1269
LIGHT DETECTOR	EACH	4
LIGHT DETECTOR AMPLIFIER	EACH	4
PEDESTRIAN PUSH-BUTTON	EACH	4
TEMPORARY TRAFFIC SIGNAL INSTALLATION	EACH	1
REMOVE EXISTING TRAFFIC SIGNAL EQUIPMENT	EACH	1
REMOVE EXISTING HANDHOLE	EACH	10
REMOVE EXISTING DOUBLE HANDHOLE	EACH	1
REMOVE EXISTING CONCRETE FOUNDATION	EACH	8
EMERGENCY VEHICLE PRIORITY SYSTEM LINE SENSOR CABLE, NO. 20 3/C	FOOT	969
RELOCATE EXISTING VIDEO ENCODER, SPECIAL	EACH	1
FULL-ACTUATED CONTROLLER AND TYPE IV CABINET, SPECIAL	EACH	1
UNINTERRUPTIBLE POWER SUPPLY, SPECIAL	EACH	1
ELECTRIC CABLE IN CONDUIT NO. 20 3/C, TWISTED, SHIELDED	FOOT	114
ELECTRIC CABLE IN CONDUIT, COAXIAL	FOOT	114
CAMERA MOUNTING ASSEMBLY	EACH	1
TEMPORARY TRAFFIC SIGNAL TIMING	EACH	1
SPLICE FIBER IN CABINET	EACH	4
TERMINATE FIBER IN CABINET	EACH	8

FILE NAME: P:\2014\10427\_10427\_Plan\10427\_SIGN\10427\_SIGN\_SCHEDULE\_OF\_QUANTITIES.dwg  
 PLOT SCALE: 1/8"=1'-0"  
 USER: MMS



2699 Warrenville Road, Suite 203, Downers Grove, IL 60515  
 630.265.8118 voice, 630.838.2566 fax  
 www.mps-ill.com

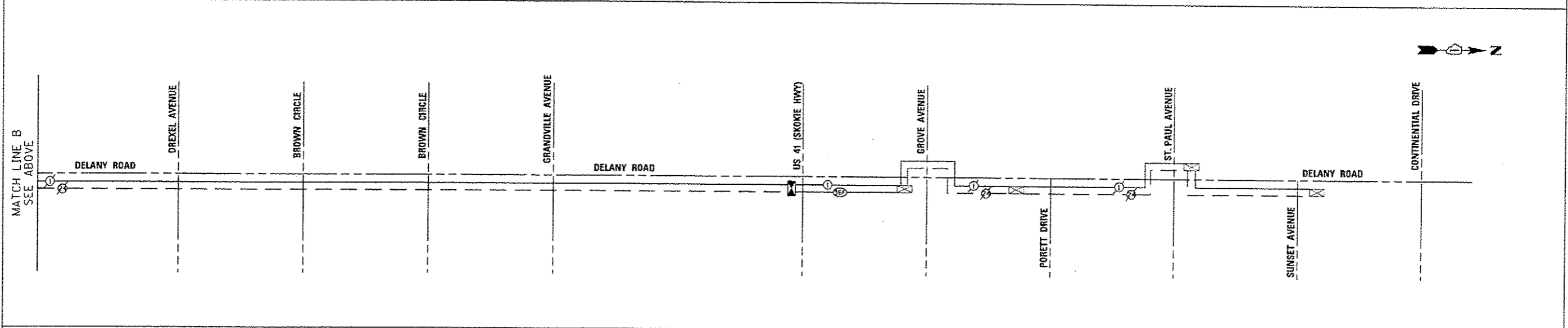
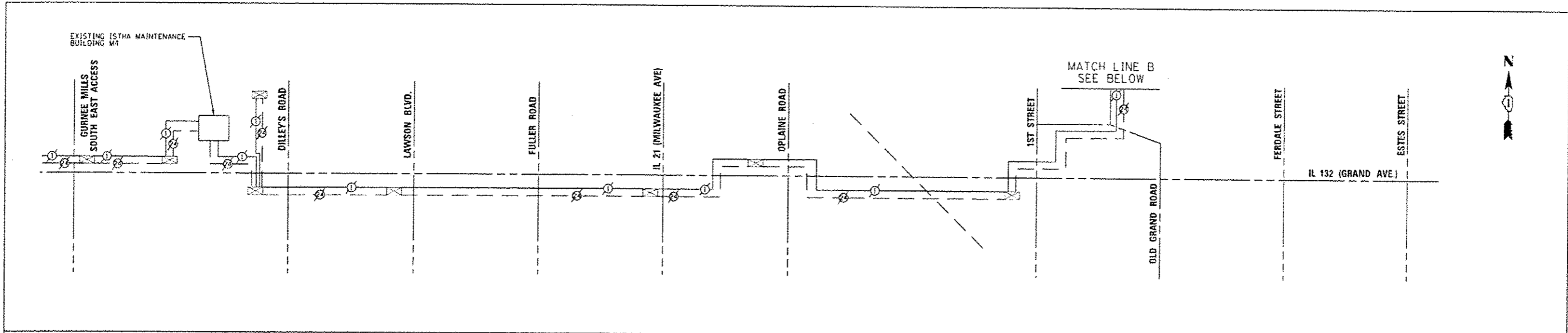
**MILLENNIA PROFESSIONAL SERVICES**

DESIGNED - MG	REVISED -
DRAWN - MGT/VN	REVISED -
CHECKED - TVN	REVISED -
DATE -	REVISED -

**STATE OF ILLINOIS  
 DEPARTMENT OF TRANSPORTATION**

**US ROUTE 41 (SKOKIE HIGHWAY)  
 MAST ARM MOUNTED STREET NAME SIGNS  
 AND SCHEDULE OF QUANTITIES**

P.A.R. NO. 346	SECTION 2013-0531	COUNTY LAKE	TOTAL SHEET NO. 135 OF 136
SCALE: SHEET NO. OF SHEETS 514 TO 514			CONTRACT NO. 60W99



**INTERCONNECT SCHEDULE OF QUANTITIES**

DESCRIPTION	UNIT	QUANTITY
MAINTENANCE OF EXISTING TRAFFIC SIGNAL INSTALLATION	EACH	2
ELECTRIC CABLE IN CONDUIT, TRACER, NO. 14 1C	FOOT	654
DRILL EXISTING HANDHOLE	EACH	2
REMOVE AND REINSTALL ELECTRIC CABLE FROM CONDUIT	FOOT	675
FIBER OPTIC CABLE IN CONDUIT, NO. 62.5/125, MM12F SM24F	FOOT	654
RE-OPTIMIZE TRAFFIC SIGNAL SYSTEM LEVEL 2	EACH	1

FILE NAME: I:\2014\14277\New\14277.dwg  
 PLOT SCALE: 1/8"=1'-0"  
 PLOT DATE: 3/20/2015 10:58:58 AM  
 PLOT BY: J. W. MILLER



2600 Warrickville Road, Suite 201, Downers Grove, IL 60515  
 630.785.8110 voice, 630.831.2566 fax  
 www.mps-ill.com  
**MILLENNIA PROFESSIONAL SERVICES**

DESIGNED - MG	REVISED -
DRAWN - MG/TVN	REVISED -
CHECKED - TVI	REVISED -
DATE - 3/20/2015	REVISED -

**STATE OF ILLINOIS**  
**DEPARTMENT OF TRANSPORTATION**

**US ROUTE 41 (SKOKIE HIGHWAY)**  
**INTERCONNECT SCHEMATIC**

SCALE: SHEET NO. OF SHEETS STA. TO STA.

F.A.P. RTE.	SECTION	COUNTY	TOTAL SHEETS	SHEET NO.
346	2013-0531	LAKE	135	107
FED. ROAD DIST. NO. 1 ILLINOIS			CONTRACT NO. 60W99	
ILLINOIS FED. AID PROJECT				

I:\2014\14277\New\14277.dwg  
 PLOT SCALE: 1/8"=1'-0"  
 PLOT DATE: 3/20/2015 10:58:58 AM  
 PLOT BY: J. W. MILLER