

STATE OF ILLINOIS  
DEPARTMENT OF TRANSPORTATION  
DIVISION OF HIGHWAYS

**PROPOSED  
HIGHWAY PLANS**

FAP ROUTE 346: US 41 (SKOKIE HWY)  
OVER DESPLAINES RIVER SN 049-0029  
SECTION 124X-B(BR)  
BRIDGE JOINT REPAIR, BRIDGE DECK REPAIR  
LAKE COUNTY

C-91-093-15

F.A.P. RTE.	SECTION	COUNTY	TOTAL SHEETS	SHEET NO.
346	124X-B(BR)	COOK	24	1
ILLINOIS CONTRACT NO.			62A16	

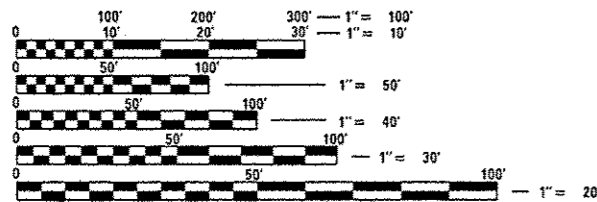
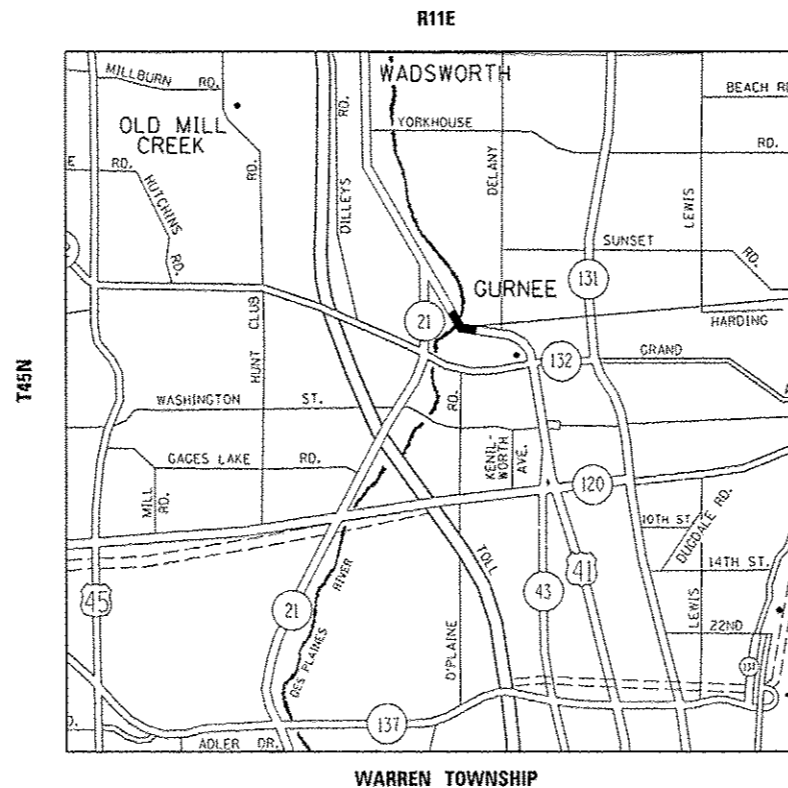
FOR INDEX OF SHEETS, SEE SHEET NO. 2

IMPROVEMENT IS LOCATED IN  
THE VILLAGE OF GURNEE

**TRAFFIC DATA**

2013 ADT = 25,400

SPEED LIMIT = 45 MPH



FULL SIZE PLANS HAVE BEEN PREPARED USING STANDARD ENGINEERING SCALES. REDUCED SIZED PLANS WILL NOT CONFORM TO STANDARD SCALES. IN MAKING MEASUREMENTS ON REDUCED PLANS, THE ABOVE SCALES MAY BE USED.

J.U.L.I.E.  
JOINT UTILITY LOCATION INFORMATION FOR EXCAVATION  
1-800-892-0123  
OR 811

PROJECT ENGINEER: J. ALAIN MIDY (847) 221-3056  
PROJECT MANAGER: ISSAM RYYAN (847) 705-4178

GROSS AND NET LENGTH = 204.0 FT. = 0.039 MILE

CONTRACT NO. 62A16

STATE OF ILLINOIS  
DEPARTMENT OF TRANSPORTATION  
DIVISION OF HIGHWAYS

SUBMITTED *December 18, 2014*

*John F. ...*  
DEPUTY DIRECTOR OF HIGHWAYS, REGION ENGINEER

*Man D. Baranzelli PE, Inc.*  
ENGINEER OF DESIGN AND ENVIRONMENT

*Man D. Baranzelli PE, Inc.*  
DIRECTOR OF HIGHWAYS, CHIEF ENGINEER

**PRINTED BY THE AUTHORITY  
OF THE STATE OF ILLINOIS**

**INDEX STANDARDS**

1	TITLE SHEET
2	INDEX OF SHEETS, STATE STANDARDS, AND GENERAL NOTES
3	SUMMARY OF QUANTITIES
4-15	BRIDGE REPAIR PLANS (SN 049-0029)
16	TYPICAL CROSS-SECTION
17-20	TRAFFIC CONTROL STAGING PLANS
21-22	PAVEMENT MARKING PLANS
23	TRAFFIC CONTROL AND PROTECTION FOR SIDE ROADS, INTERSECTIONS AND DRIVEWAYS (TC-10)
24	DISTRICT 1 TYPICAL PAVEMENT MARKERS (TC-13)
26	ARTERIAL ROAD INFORMATION SIGN (TC-22)

**STATE STANDARDS**

701421 - 07	LANE CLOSURE, MULTILANE, DAY OPERATIONS ONLY, FOR SPEEDS ≥ 45 MPH TO 55 MPH
701426 - 07	LANE CLOSURE, MULTILANE, INTERMITTENT, OR MOVING OPERATIONS FOR SPEEDS ≥ 45 MPH
701901 - 04	TRAFFIC CONTROL DEVICES

**GENERAL NOTES**

- BEFORE STARTING ANY EXCAVATION, THE CONTRACTOR SHALL CALL "J.U.L.I.E." AT (800) 892-0123 OR 811 FOR FIELD LOCATIONS OF BURIED ELECTRIC, TELEPHONE AND GAS UTILITIES. 48 HOUR NOTIFICATION IS REQUIRED.
- THE CONTRACTOR SHALL COORDINATE CONSTRUCTION ACTIVITIES WITH UTILITY COMPANIES, AND THE VILLAGE OF GURNEE.
- THE CONTRACTOR WILL NOT BE ALLOWED TO SET UP A YARD OR FIELD OFFICE ON STATE PROPERTY WITHOUT WRITTEN PERMISSION FROM THE DEPARTMENT.
- BEFORE BEGINNING ANY WORK, THE CONTRACTOR SHALL RETAIN AND RECORD FOR FUTURE REFERENCE, ALL EXISTING PAVEMENT MARKING LINES (AND RAISED REFLECTIVE PAVEMENT MARKERS) IN ORDER THAT THESE LOCATIONS CAN BE RE-ESTABLISHED FOR STRIPING. EXACT LOCATIONS OF ALL PAVEMENT MARKINGS SHALL BE AS DIRECTED BY THE ENGINEER.
- PLAN DIMENSIONS AND DETAILS RELATIVE TO EXISTING PLANS ARE SUBJECT TO NOMINAL CONSTRUCTION VARIATIONS. THE CONTRACTOR SHALL FIELD VERIFY EXISTING DIMENSIONS AND DETAILS AFFECTING NEW CONSTRUCTION AND MAKE NECESSARY APPROVED ADJUSTMENTS PRIOR TO CONSTRUCTION OR ORDERING OF MATERIALS. SUCH VARIATIONS SHALL NOT BE CAUSE FOR ADDITIONAL COMPENSATION FOR A CHANGE IN SCOPE OF THE WORK, HOWEVER, THE CONTRACTOR WILL BE PAID FOR THE QUANTITY ACTUALLY FURNISHED BASED AT THE UNIT PRICE BID FOR THE WORK.
- THE CONTRACTOR SHALL CONTACT THE DISTRICT ONE TRAFFIC CONTROL SUPERVISOR AT (847)705-4470 A MINIMUM OF 72 HOURS IN ADVANCE OF BEGINNING WORK.
- THE ENGINEER SHALL CONTACT PATRICE HARRIS, AREA TRAFFIC FIELD TECHNICIAN, AT (708) 597-9800 A MINIMUM OF TWO (2) WEEKS PRIOR TO THE PLACEMENT OF PERMANENT PAVEMENT MARKINGS.
- THESE PLANS HAVE BEEN PREPARED FROM NOTES RECEIVED FROM THE BUREAU OF MAINTENANCE BRIDGE INSPECTORS.
- DO NOT SCALE PLANS FOR CONSTRUCTION DIMENSIONS.
- THE ENGINEER SHALL CONTACT THE IDOT TRAFFIC CONTROL SUPERVISOR AT 847-705-4155 A MINIMUM OF 72 HOURS PRIOR TO THE PLACEMENT OF ANY TEMPORARY TRAFFIC CONTROL DEVICES WITHIN IDOT JURISDICTION,

**HMA MIXTURE REQUIREMENTS**

MIXTURE TYPE	AIR VOIDS @ NDES	QUALITY MANAGEMENT PROGRAM (QMP)
<b>PAVEMENT AND SHOULDERS</b>		
POLYMERIZED HOT-MIX ASPHALT SURFACE COURSE, MIX "D", N70 (IL 9.5 mm)	4% @ 70 GYR	<b>QC /QA</b>
QMP DESIGNATION: QUALITY CONTROL/QUALITY ASSURANCE (QC/QA);		

THE UNIT WEIGHT USED TO CALCULATE ALL HOT-MIX ASPHALT SURFACE MIXTURE QUANTITIES IS 112 LBS/SQYD/IN.

THE "AC TYPE" FOR POLYMERIZED HMA MIXES SHALL BE "SBS/SBR PG 70 -22" AND FOR NON-POLYMERIZED HMA THE "AC TYPE" SHALL BE "PG 64 -22" UNLESS MODIFIED BY DISTRICT ONE SPECIAL PROVISIONS. FOR USE OF RECYCLED MATERIALS SEE SPECIAL PROVISIONS.

QUALITY MANAGEMENT PROGRAM (QMP) IDENTIFIES THE PARTICULAR QUANTITY CONTROL SPECIFICATION THAT APPLIES TO THE HMA MIXTURE.

**NOTE:**  
**CONTRACTOR SHALL MILL FIRST BEFORE PATCHING**

FILE NAME =	USER NAME = hardnetbr	DESIGNED -	REVISED -	<b>STATE OF ILLINOIS DEPARTMENT OF TRANSPORTATION</b>	<b>US 30 OVER I-57 INDEX</b>	F.A.P. RTE.	SECTION	COUNTY	TOTAL SHEETS	SHEET NO.	
c:\pw\work\pvidot\hardnetbr\d0416396\089315-shs-plan.dgn	DRAWN -	REVISED -	346			124X-8(BR)	LAKE	24	2		
Default	PLOT SCALE = 100.0000' / 1in.	CHECKED -	REVISED -			CONTRACT NO. 62A16					
	PLOT DATE = 1/7/2015	DATE -	REVISED -			ILLINOIS FED. AID PROJECT					

SUMMARY OF QUANTITIES			CONSTRUCTION TYPE CODE				
CODE NO	ITEM	UNIT	URBAN TOTAL QUANTITIES	100% State 0014			
40600275	BITUMINOUS MATERIALS (PRIME COAT)	POUND	128	128			
40600400	MIXTURE FOR CRACKS, JOINTS, AND FLANGEWAYS	TON	1	1			
40600982	HOT-MIX ASPHALT SURFACE REMOVAL - BUTT JOINT	SQ YD	34	34			
40603540	POLYMERIZED HOT-MIX ASPHALT SURFACE COURSE, MIX "D", N70	TON	19	19			
44000156	HOT-MIX ASPHALT SURFACE REMOVAL, 1 3/4"	SQ YD	189	189			
50102400	CONCRETE REMOVAL	CU YD	14.8	14.8			
50300100	FLOOR DRAINS	EACH	10	10			
50300255	CONCRETE SUPERSTRUCTURE	CU YD	14.8	14.8			
50800205	REINFORCEMENT BARS, EPOXY COATED	POUND	1130	1130			
50800519	BAR SPLICERS	EACH	16	16			
52000110	PREFORMED JOINT STRIP SEAL	FOOT	184	184			
67000400	ENGINEER'S FIELD OFFICE, TYPE A	CAL MO	3	3			
67100100	MOBILIZATION	L SUM	1	1			
* 78000200	THERMOPLASTIC PAVEMENT MARKING - LINE 4"	FOOT	7485	7485			
* 78008210	POLYUREA PAVEMENT MARKING TYPE I - LINE 4"	FOOT	385	385			
* 78100100	RAISED REFLECTIVE PAVEMENT MARKER	EACH	8	8			

SUMMARY OF QUANTITIES			CONSTRUCTION TYPE CODE				
CODE NO	ITEM	UNIT	URBAN TOTAL QUANTITIES	100% State 0014			
* 78100105	RAISED REFLECTIVE PAVEMENT MARKER (BRIDGE)	EACH	6	6			
* 78100300	REPLACEMENT REFLECTOR	EACH	36	36			
78300100	PAVEMENT MARKING REMOVAL	SO FT	1056	1056			
78300200	RAISED REFLECTIVE PAVEMENT MARKER REMOVAL	EACH	8	8			
X7010216	TRAFFIC CONTROL AND PROTECTION, (SPECIAL)	L SUM	1	1			
X7801004	WET REFLECTIVE THERMOPLASTIC PAVEMENT MARKING - LINE 4"	FOOT	3861	3861			
Z0012193	BRIDGE DECK THIN POLYMER OVERLAY 3/8"	SO YD	1130	1130			
Z0012754	STRUCTURAL REPAIR OF CONCRETE (DEPTH EQUAL TO OR LESS THAN 5 INCHES)	SO FT	210	210			
Z0012755	STRUCTURAL REPAIR OF CONCRETE (DEPTH GREATER THAN 5 INCHES)	SO FT	50	50			
Z0016001	DECK SLAB REPAIR (FULL DEPTH, TYPE I)	SO YD	8	8			
Z0016200	DECK SLAB REPAIR (PARTIAL)	SO YD	27	27			
Z0021907	SILICONE JOINT SEALER, 1.75"	FOOT	154	154			
Z0030850	TEMPORARY INFORMATION SIGNING	SO FT	51.4	51.4			
Z0012102	CONCRETE BRIDGE DECK SCARIFICATION 3/8"	SO YD	1130	1130			

\* Specialty Items

Rev.

FILE NAME: c:\p\work\pav\m14\1045398-009315-01-01.dwg	USER NAME: m14jo	DESIGNED: -	REVISIONS: -	<b>STATE OF ILLINOIS DEPARTMENT OF TRANSPORTATION</b>	<b>SUMMARY OF QUANTITIES</b>			F.A.P. RTE. 346	SECTION 124X-BIBR)	COUNTY LAKE	TOTAL SHEETS 24	SHEET NO. 3
PLOT SCALE: 1/8" = 100.0000' / 1"	CHECKED: -	REVISIONS: -	CONTRACT NO. 62A16									
PLOT DATE: 12/30/2004	DATE: -	REVISIONS: -	FED. ROAD DIST. NO. 1   ILLINOIS   FED. AID PROJECT									
								SCALE: SHEET NO. OF SHEETS STA. TO STA.				

**GENERAL NOTES:**

PLAN DIMENSIONS AND DETAILS RELATIVE TO EXISTING PLANS ARE SUBJECT TO NOMINAL CONSTRUCTION VARIATIONS. THE CONTRACTOR SHALL FIELD VERIFY EXISTING DIMENSIONS AND DETAILS AFFECTING NEW CONSTRUCTION AND MAKE NECESSARY APPROVED ADJUSTMENTS PRIOR TO CONSTRUCTION OR ORDERING OF MATERIALS. SUCH VARIATIONS SHALL NOT BE CAUSE FOR ADDITIONAL COMPENSATION FOR A CHANGE IN SCOPE OF THE WORK, HOWEVER, THE CONTRACTOR WILL BE PAID FOR THE QUANTITY ACTUALLY FURNISHED BASED AT THE UNIT PRICE BID FOR THE WORK.

ALL STRUCTURAL STEEL SHALL CONFORM TO AASHTO CLASSIFICATION M-270 GR. 36, UNLESS OTHERWISE NOTED.

REINFORCEMENT BARS DESIGNATED (E) SHALL BE EPOXY COATED.

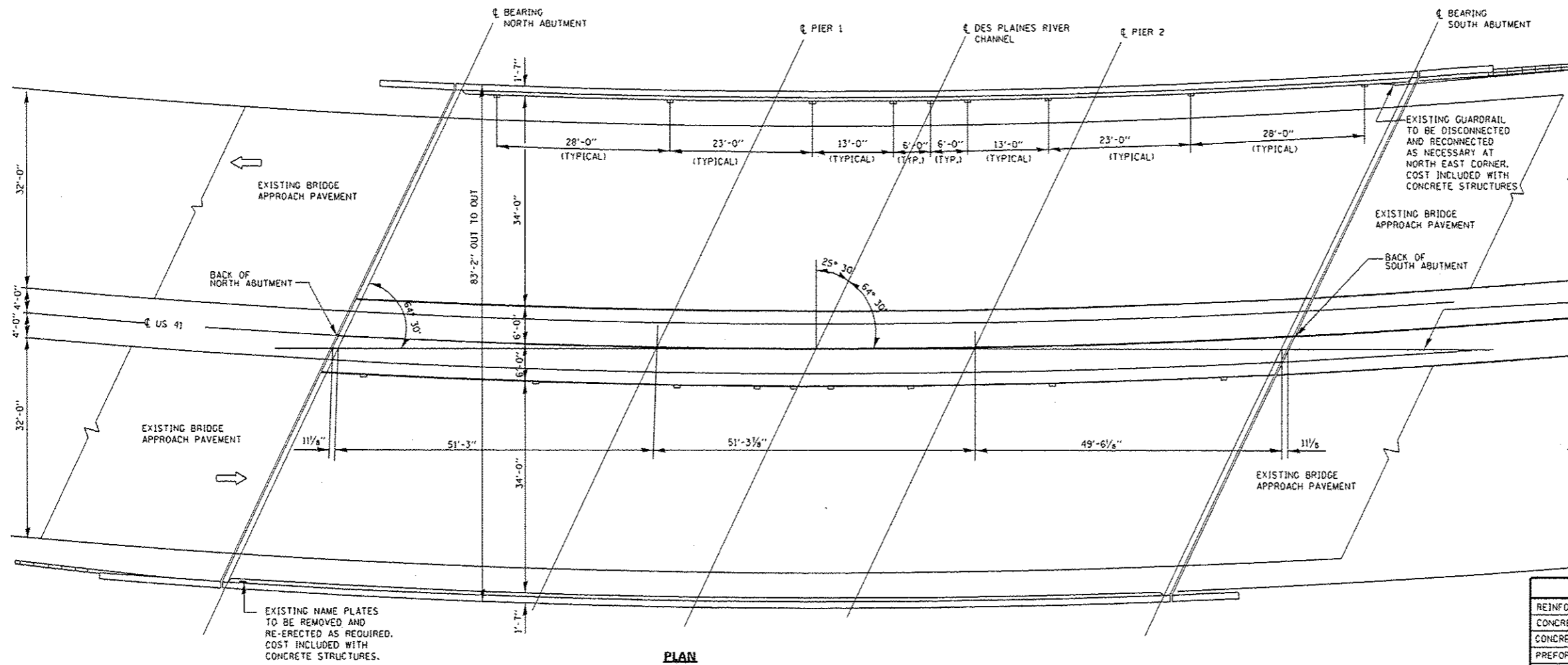
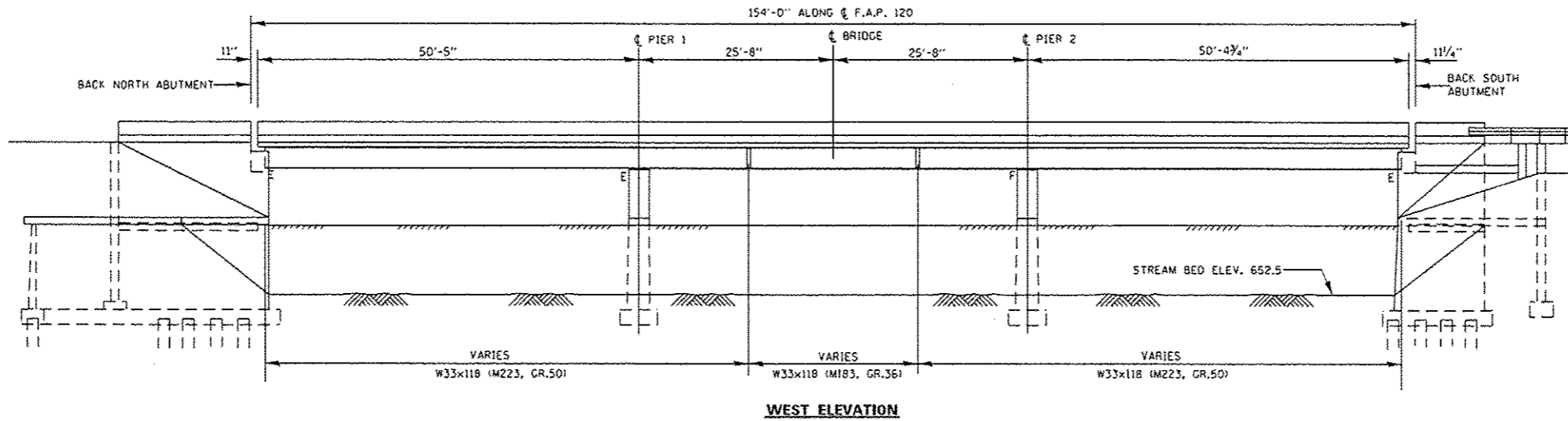
EXISTING REINFORCEMENT BARS EXTENDING INTO THE REMOVAL AREA SHALL BE CLEANED, STRAIGHTENED AND INCORPORATED INTO THE NEW CONSTRUCTION. ANY REINFORCEMENT BARS THAT ARE DAMAGED DURING CONCRETE REMOVAL SHALL BE REPLACED WITH AN APPROVED BAR SPLICER OR ANCHORAGE SYSTEM. COST INCLUDED WITH CONCRETE REMOVAL.

AREA OF DECK REPAIRS SHOWN ARE ESTIMATED. THE ENGINEER SHALL SHOW ACTUAL LOCATIONS OF DECK REPAIRS ON AS-BUILT PLANS.

JOINT OPENINGS SHALL BE ADJUSTED ACCORDING TO ARTICLE 520.04 OF THE STANDARD SPECIFICATIONS, WHEN THE DECK IS POURED AT AN AMBIENT TEMPERATURE OTHER THAN 50° F.

THE EXISTING STRUCTURAL STEEL COATING CONTAINS LEAD. THE CONTRACTOR SHALL TAKE APPROPRIATE PRECAUTIONS TO DEAL WITH PRESENCE OF LEAD ON THIS PROJECT.

DO NOT SCALE DIMENSIONS.



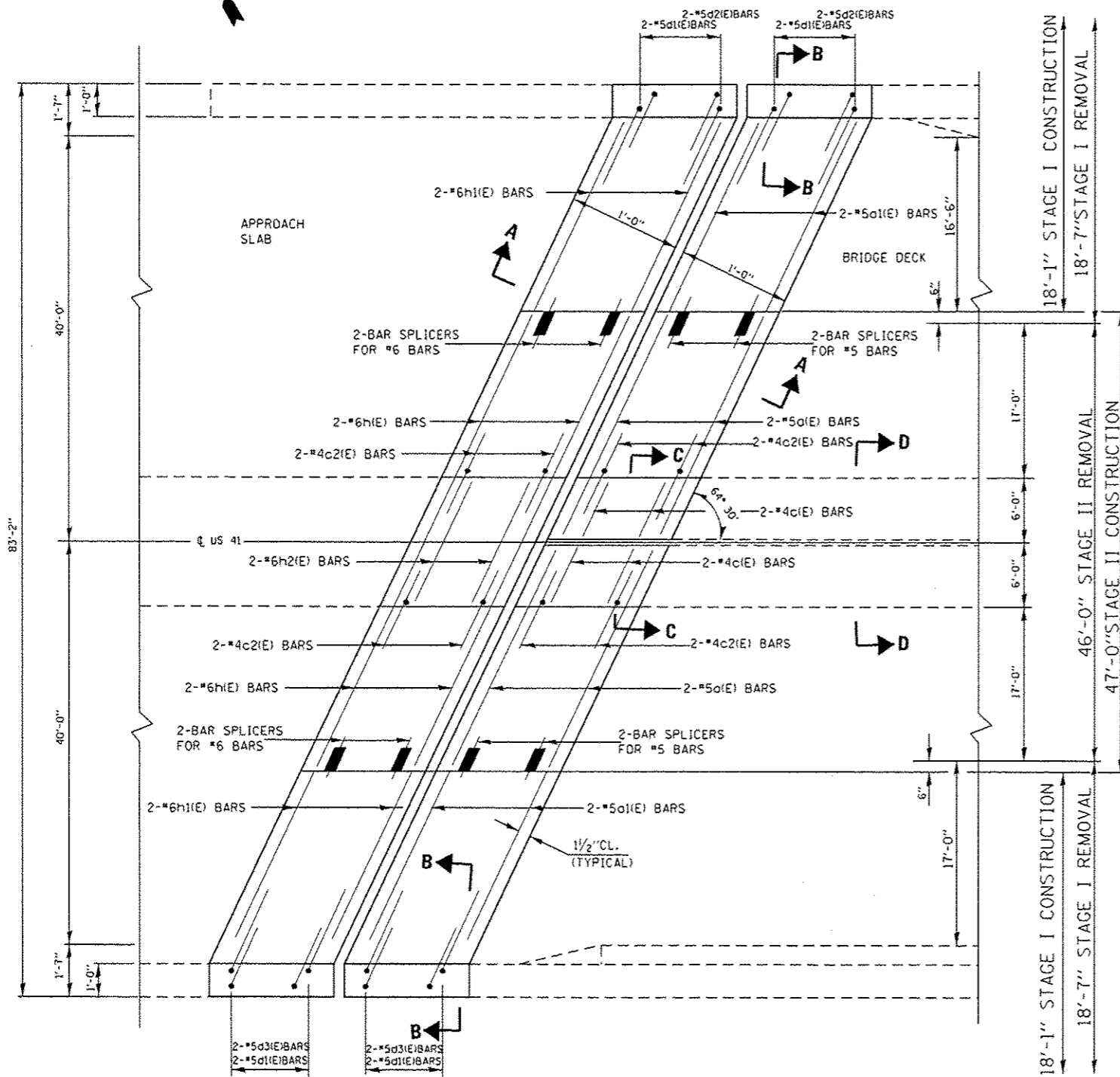
*David Carl Puzey 1/21/15*  
*Expires 11/30/16*

**TOTAL BILL OF MATERIALS**

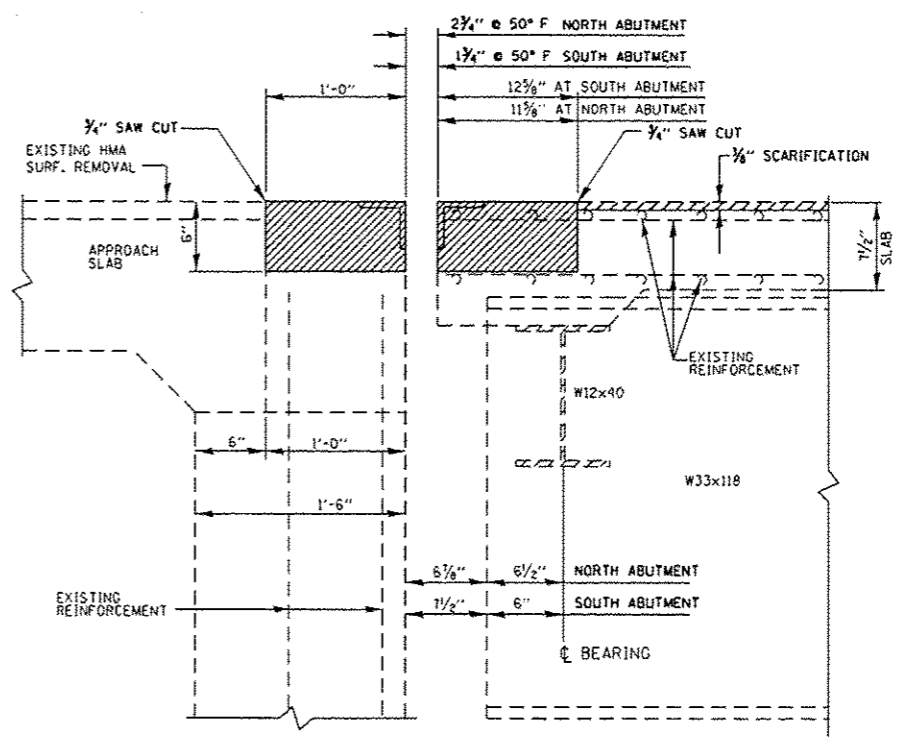
ITEM	UNIT	QUANTITY
REINFORCEMENT BARS (EPOXY COATED)	POUND	1130
CONCRETE REMOVAL	CU. YD.	14.8
CONCRETE SUPERSTRUCTURE	CU. YD.	14.6
PERFORMED JOINT STRIP SEAL	FOOT	184
DECK SLAB REPAIR (PARTIAL)	SQ. YD.	27
DECK SLAB REPAIR (FULL DEPTH, TYPE II)	SQ. YD.	8
BAR SPLICERS	EACH	16
CONCRETE BRIDGE DECK SCARIFICATION, 3/8"	SQ. YD.	1130
BRIDGE DECK THIN POLYMER OVERLAY, 3/8"	SQ. YD.	1130
SILICONE JOINT SEALER, 1 3/4"	FOOT	154
FLOOR DRAINS	EACH	10
STRUCTURE REPAIR OF CONCRETE DEPTH < 5"	SQ.FT.	210
STRUCTURE REPAIR OF CONCRETE DEPTH > 5"	SQ.FT.	50

FILE NAME =	USER NAME = hardnetbr	DESIGNED - MVT	REVISED -	<b>STATE OF ILLINOIS DEPARTMENT OF TRANSPORTATION</b>	US 41 (SKOKIE HIGHWAY) OVER DES PLAINES RIVER GENERAL PLAN, AND ELEVATION S.N. 049-0029	F.A.P. R.T.E.	SECTION	COUNTY	TOTAL SHEETS	SHEET NO.	
ct:\p-work\p\idat\hardnetbr\0101671\049-0029.dgn		DRAWN - MVT	REVISED -			346	124X-BBR0	LAKE	24	4	
Default	PLOT SCALE = 100.0000 / 1" = 100'	CHECKED - RTB	REVISED -			SCALE: SHEET 1 OF 11 SHEETS STA. TO STA.					
	PLOT DATE = 1/15/2015	DATE -	REVISED -			ILLINOIS FED. AID PROJECT CONTRACT NO. 62A16					

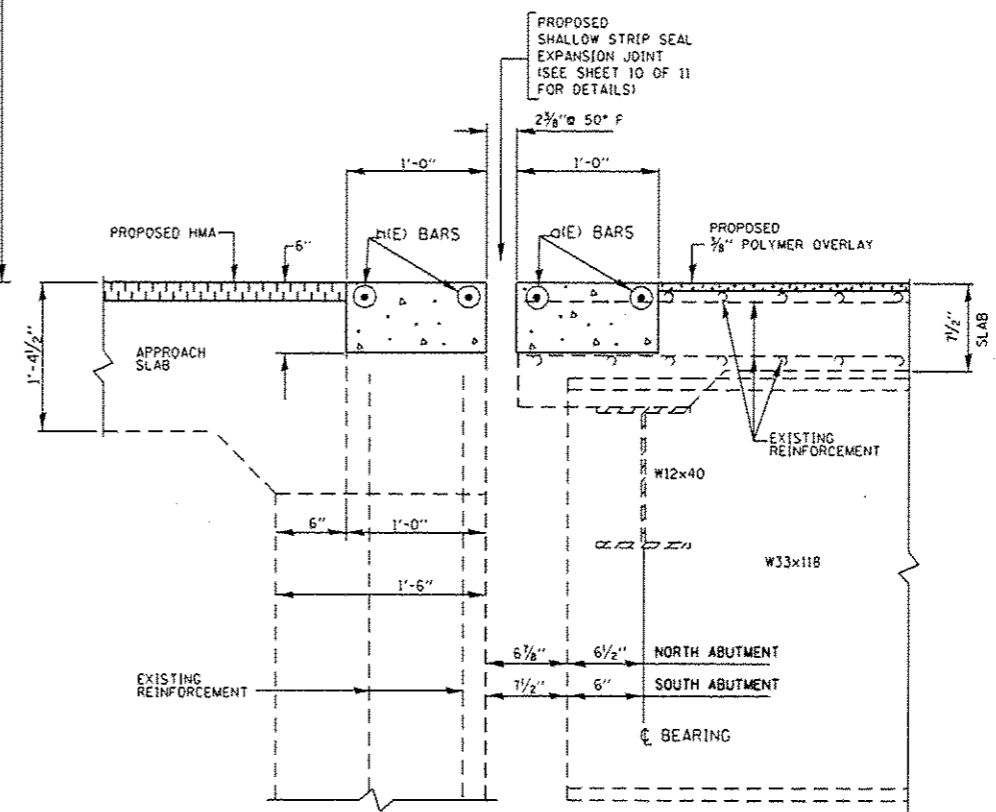




**PLAN**  
NORTH ABUTMENT SHOWN  
(SOUTH ABUTMENT SIMILAR BY ROTATION 180°)



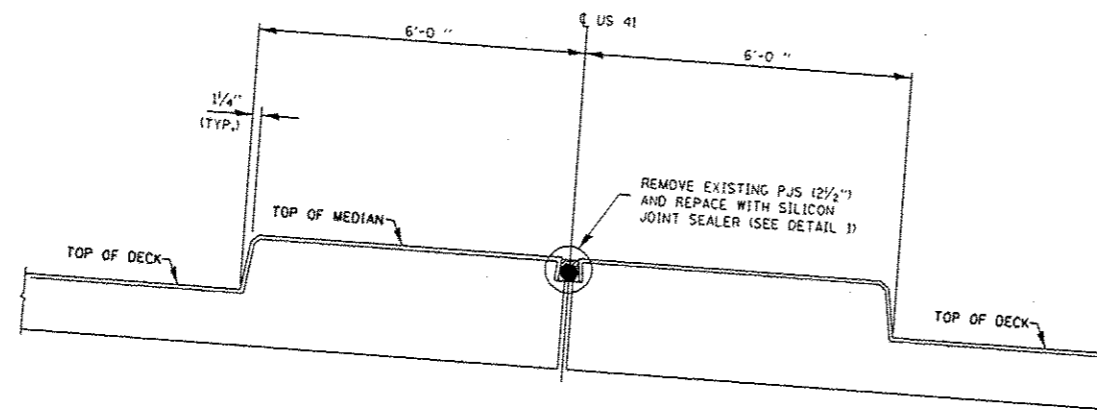
**SECTION A-A**  
(EXISTING)



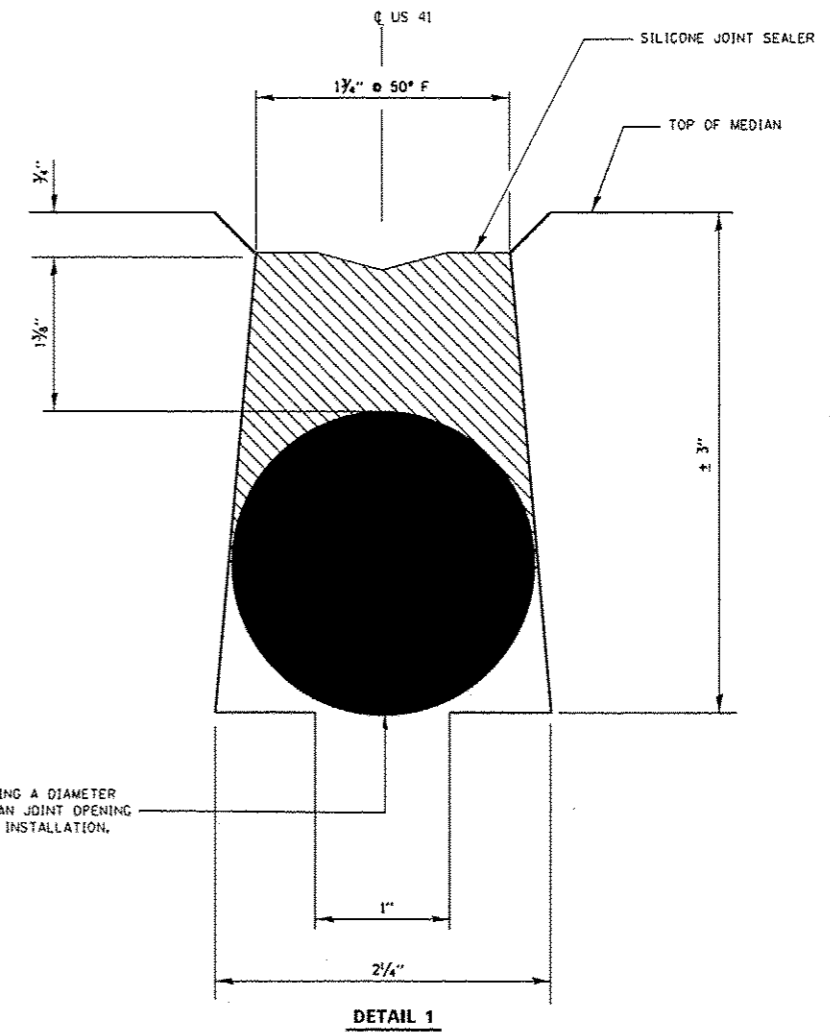
**SECTION A-A**  
(PROPOSED)

**BILL OF MATERIALS**

BAR	NO.	SIZE	LENGTH	SHAPE	
o(E)	8	*5	19'-4"		
o1(E)	8	*5	18'-11"		
d1(E)	16	*5	4'-2"		
d2(E)	8	*4	5'-2"		
d3(E)	8	*4	5'-2"		
c(E)	8	*5	5'-9"		
c2(E)	16	*5	4'-8"		
h(E)	8	*6	19'-4"		
h1(E)	8	*6	18'-11"		
h2(E)	4	*6	12'-10"		
REINFORCEMENT BARS (EPOXY COATED)				POUND	1130
CONCRETE REMOVAL				CU.YD.	14.8
CONCRETE SUPERSTRUCTURE				CU.YD.	14.8
BAR SPLICERS				EACH	16
SILICONE JOINT SEALER				FOOT	154

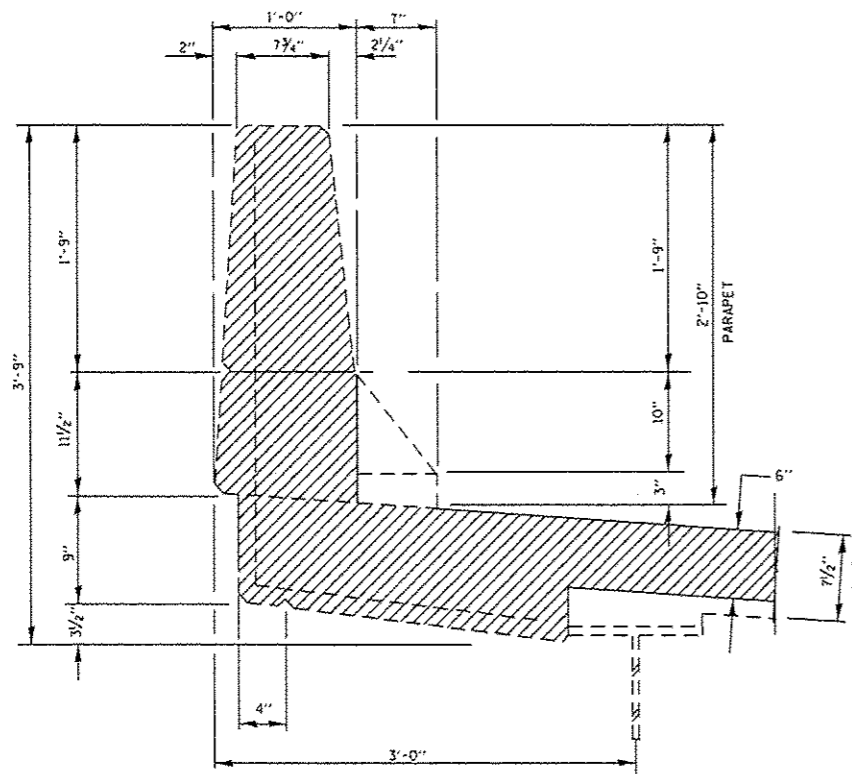


**SECTION D-D**  
SEALER TREATMENT AT MEDIAN  
(PROPOSED)

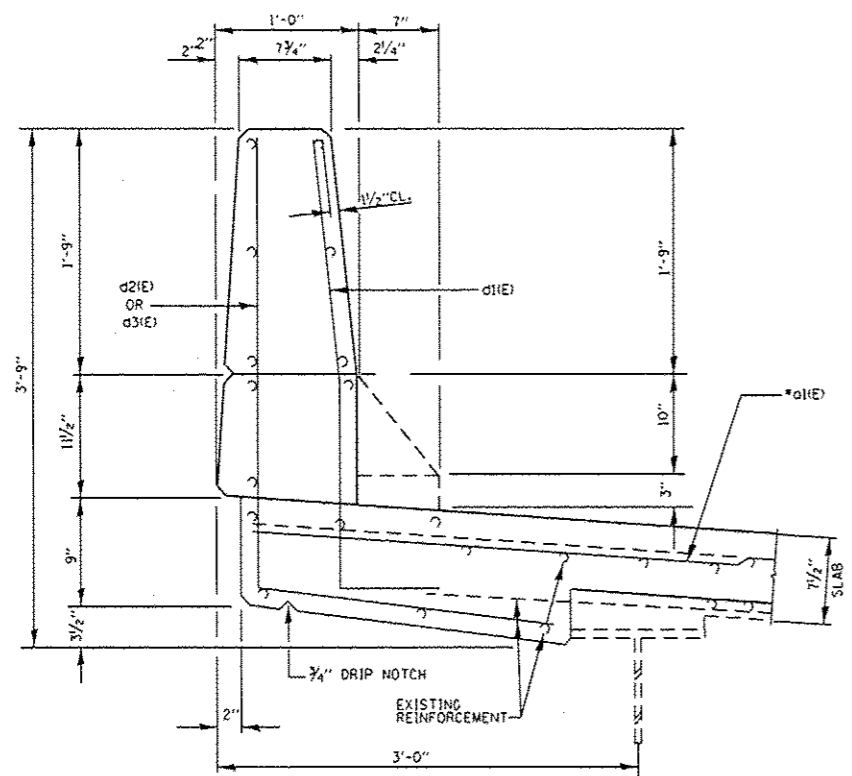


**DETAIL 1**

FILE NAME =	USER NAME = hardnetbr	DESIGNED - MVT	REVISED -	<b>STATE OF ILLINOIS DEPARTMENT OF TRANSPORTATION</b>	US 41 (SKOKIE HIGHWAY) OVER DES PLAINES RIVER SILICON SEAL LONGITUDINAL JOINT AT MEDIAN S.N. 049-0029	F.A.P. R.T.E.	SECTION	COUNTY	TOTAL SHEETS	SHEET NO.
silpr-work\p\rdet\hardnetbr\0101671\049-0029.dgn	DRAWN - MVT	REVISED -	346			124X-B(0R)	LAKE	24	7	
Default	PLOT SCALE = 100.0000' / 1" /	CHECKED - RTB	REVISED -			CONTRACT NO. 62A16				
	PLOT DATE = 1/15/2015	DATE -	REVISED -			SCALE:	SHEET 4 OF 11 SHEETS	STA.	TO STA.	ILLINOIS FED. AID PROJECT

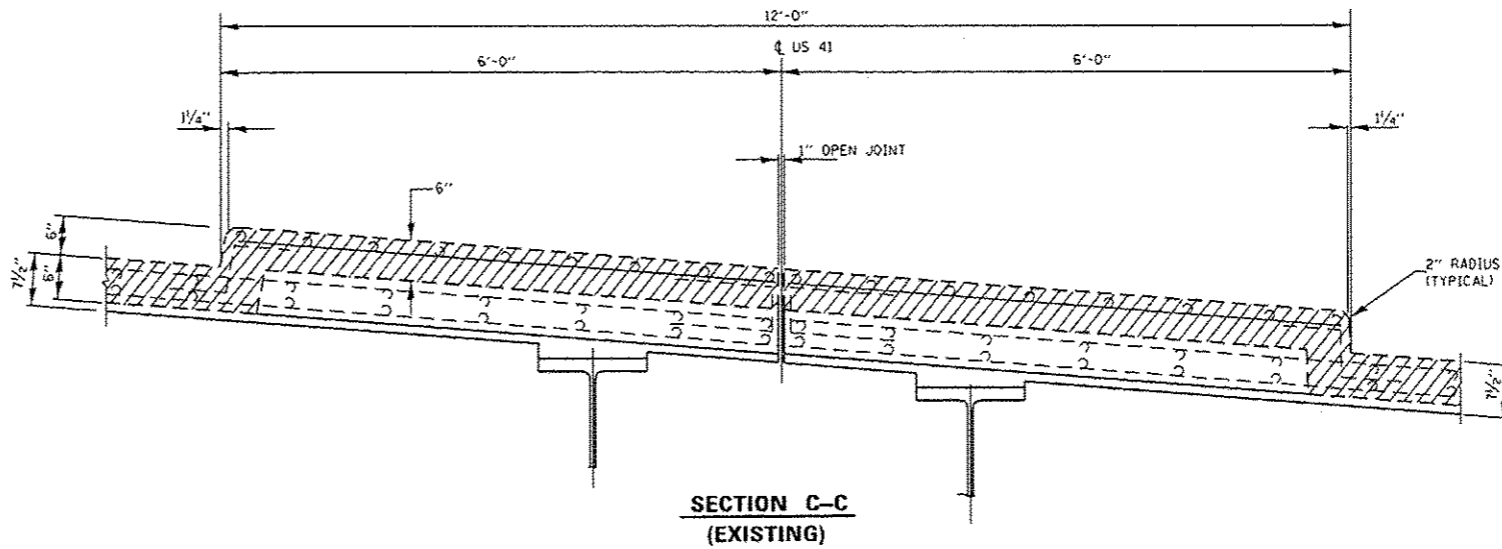


**SECTION B-B  
(EXISTING)**

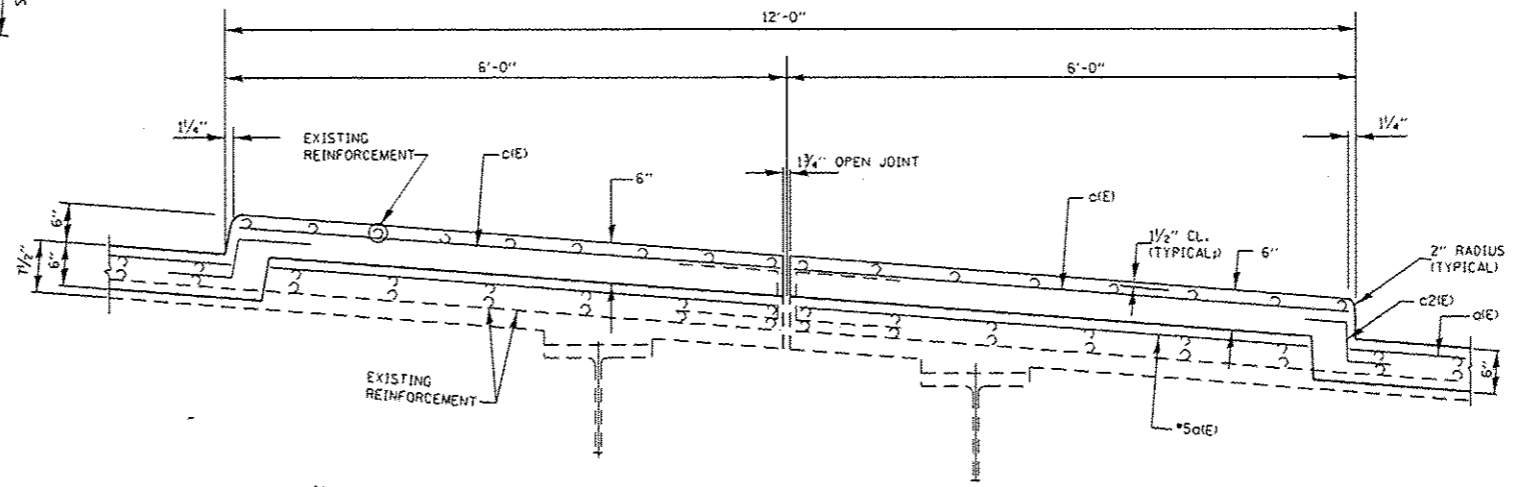


**SECTION B-B  
(PROPOSED)**

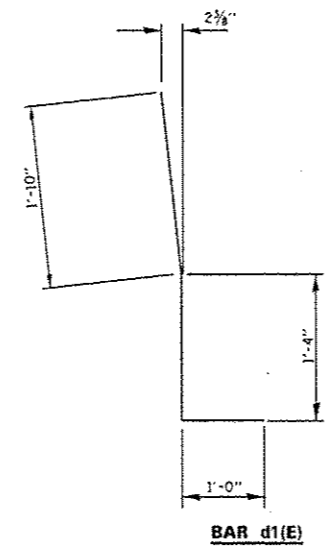
**NOTE:**  
ALL EDGES SHALL HAVE 3/8" CHAMFER



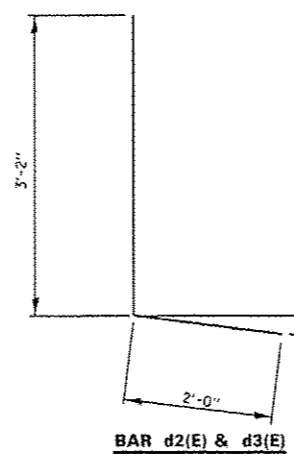
**SECTION C-C  
(EXISTING)**



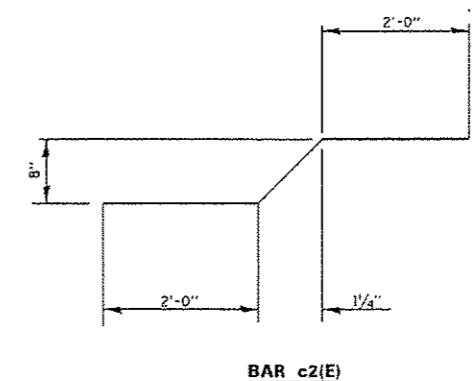
**SECTION C-C  
(PROPOSED)**



**BAR d1(E)**



**BAR d2(E) & d3(E)**

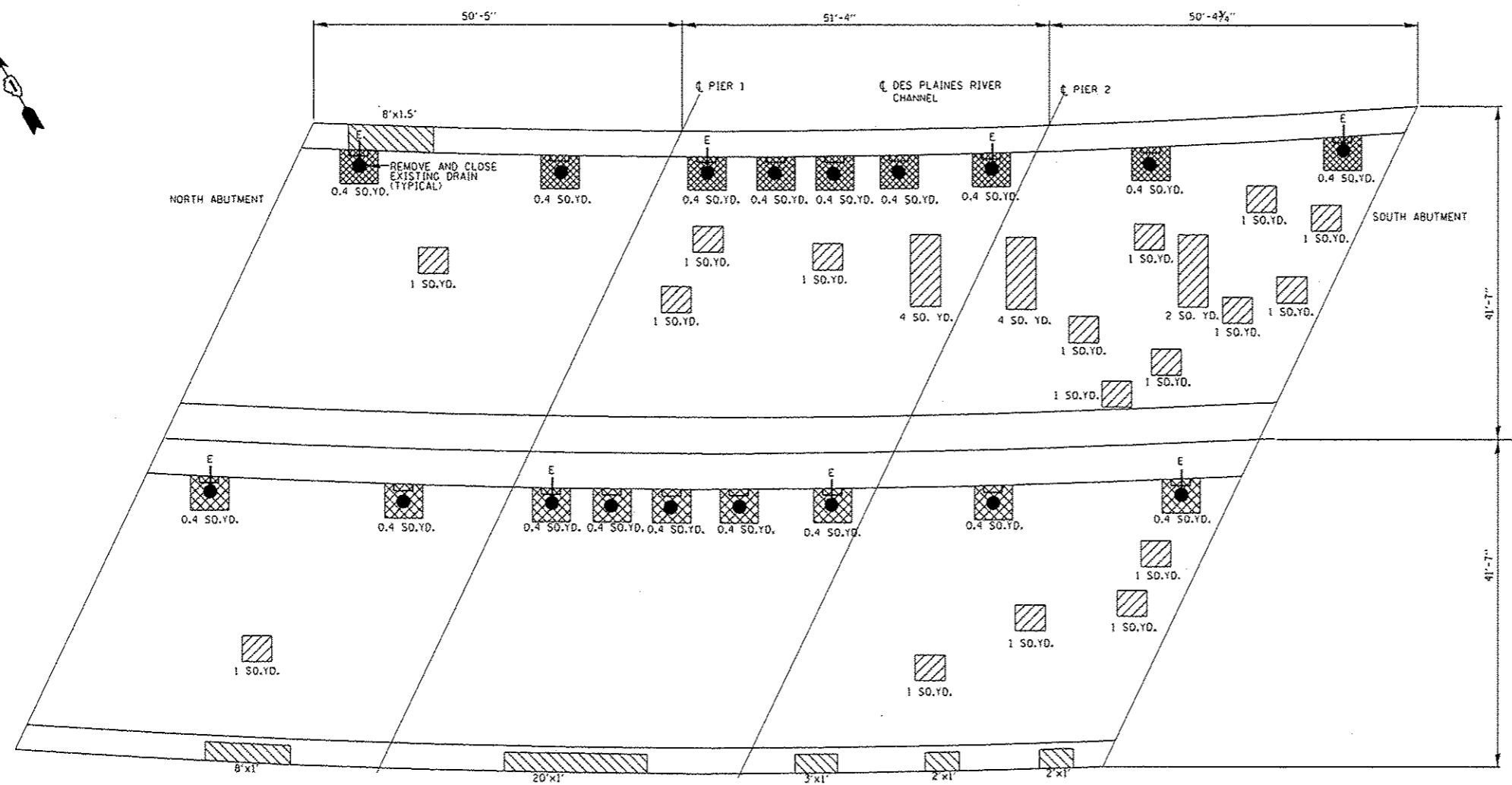


**BAR c2(E)**

**LEGEND:**  
 HATCHED AREA INDICATES CONCRETE REMOVAL

FILE NAME = c:\pwork\p10dot\hardmetb\08101671\081029.dgn	USER NAME = hardmetb	DESIGNED - MVT	REVISED -	<b>STATE OF ILLINOIS DEPARTMENT OF TRANSPORTATION</b>	US 41 (SKOGE HIGHWAY) OVER DES PLAINES RIVER PIER NO. 1 REPAIR S.N. 049-0029	F.A.P. RTE. 346	SECTION 124X-BIBR1	COUNTY LAKE	TOTAL SHEETS 24	SHEET NO. 8		
Default	PLOT SCALE = 100.0000 / in.	DRAWN - MVT	REVISED -			SCALE:	SHEET 5 OF 11 SHEETS	STA.	TO STA.	CONTRACT NO. 62A16		
	PLOT DATE = 1/15/2015	CHECKED - RTB	REVISED -								ILLINOIS FED. AID PROJECT	
		DATE -	REVISED -									





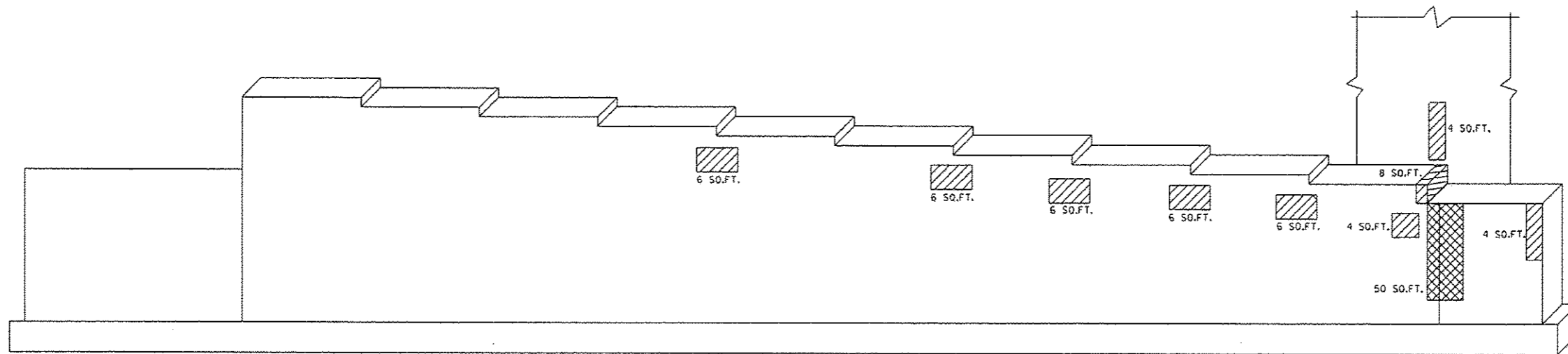
PLAN

**LEGEND:**

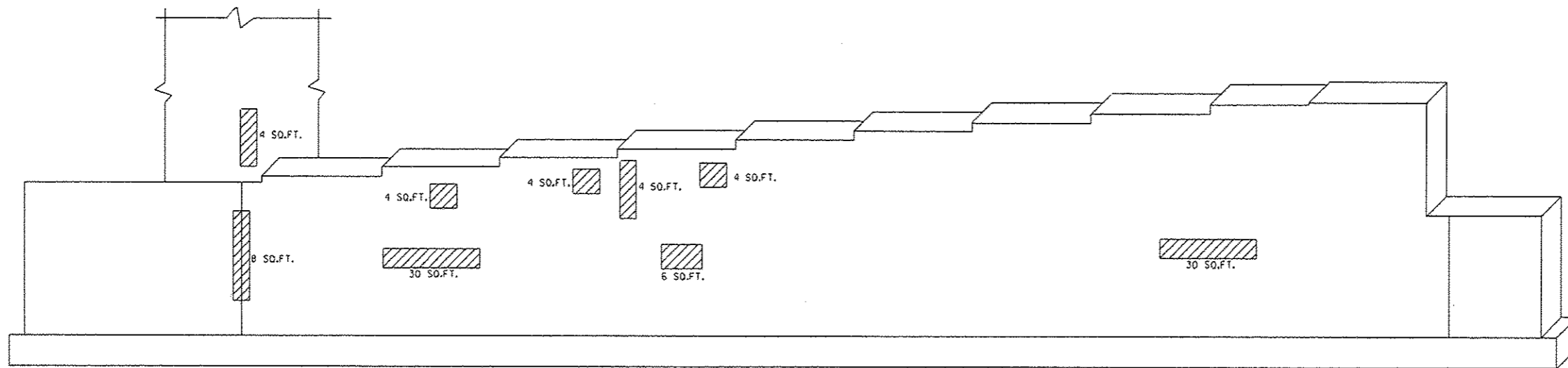
- DECK SLAB REPAIR (PARTIAL)
- STRUCTURAL REPAIR OF CONCRETE (DEPTH ≤ 5")
- DECK SLAB REPAIR (FULL DEPTH)
- LOCATION WHERE EXISTING 1'-0" x 4" DRAINS TO BE REPLACED WITH 6" Ø FLOOR DRAINS = 10 USING 2'-0" x 2'-0" FULL DEPTH DECK REPAIRS
- LOCATION WHERE EXISTING 1'-0" x 4" DRAINS ARE TO BE ELIMINATED = 8 USING 2'-0" x 2'-0" FULL DEPTH DECK REPAIRS

**BILL OF MATERIALS**

ITEM	UNIT	QUANTITY
DECK SLAB REPAIR (PARTIAL)	SO.YD.	27
STRUCTURAL REPAIR OF CONCRETE (DEPTH ≤ 5")	SO.FT.	47
DECK SLAB REPAIR (FULL DEPTH, TYPE 1)	SO.YD.	8
FLOOR DRAINS	EACH	10



NORTH ABUTMENT  
LOOKING NORTH



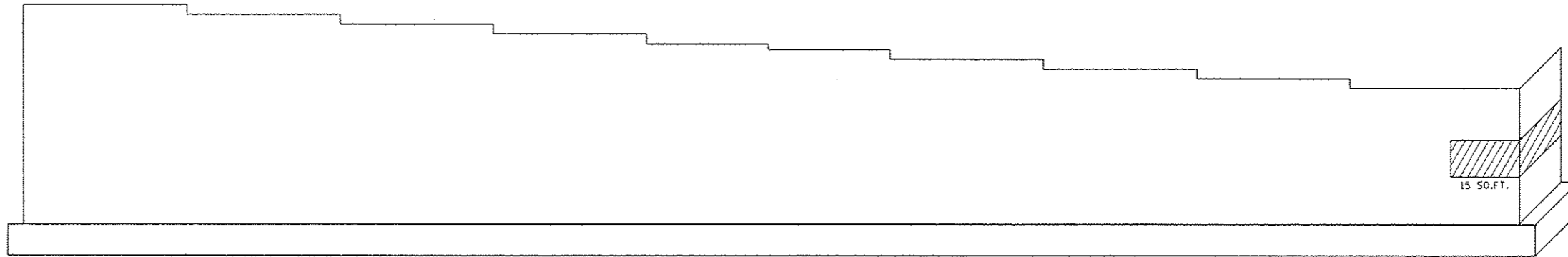
SOUTH ABUTMENT  
LOOKING SOUTH

- STRUCTURAL REPAIR OF CONCRETE DEPTH ≤ 5'
- STRUCTURAL REPAIR OF CONCRETE DEPTH > 5'

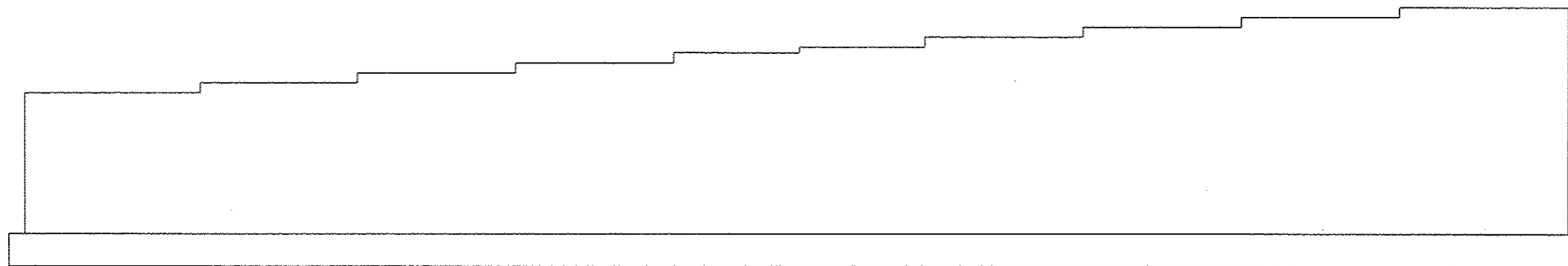
**BILL OF MATERIALS**

ITEM	UNIT	QUANTITY
STRUCTURAL REPAIR OF CONCRETE DEPTH ≤ 5'	SQ.FT.	148
STRUCTURAL REPAIR OF CONCRETE DEPTH > 5'	SQ.FT.	50

FILE NAME =	USER NAME = hardnetbr	DESIGNED - MVT	REVISED -	<b>STATE OF ILLINOIS DEPARTMENT OF TRANSPORTATION</b>	US 41 (SKORKE HIGHWAY) OVER DES PLAINES RIVER NORTH AND SOUTH ABUTMENTS REPAIR S.N. 049-0029	F.A.P. RTE.	SECTION	COUNTY	TOTAL SHEETS	SHEET NO.
01:\pr-work\prdos\hardnetbr\00101671\049-0029.dgn	DRAWN - MVT	REVISED -	346			124X-B8R	LAKE	24	10	
Default	CHECKED - RTB	REVISED -	CONTRACT NO. 62A16							
	PLT DATE = 1/15/2015	DATE -	REVISED -			SCALE:	SHEET 7 OF 11 SHEETS	STA.	TO STA.	ILLINOIS FED. AID PROJECT



**PIER 1**  
**LOOKING NORTH**



**PIER 1**  
**LOOKING SOUTH**

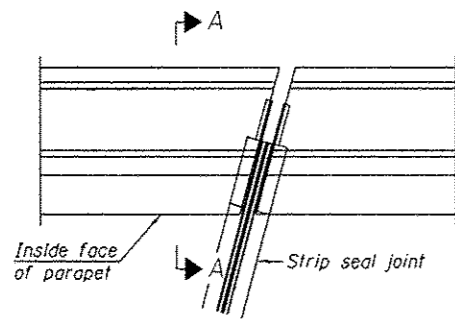
 STRUCTURAL REPAIR OF CONCRETE DEPTH ≤ 5"

**BILL OF MATERIALS**

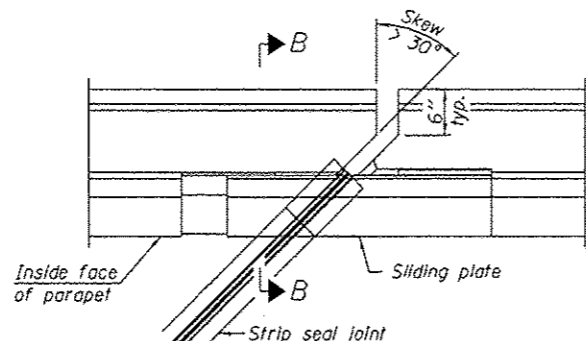
ITEM	UNIT	QUANTITY
STRUCTURAL REPAIR OF CONCRETE DEPTH ≤ 5"	SQ.FT.	15

FILE NAME = c:\pr_work\p\idat\hardnetb\10101671\10101671.dgn	USER NAME = hardnetb	DESIGNED - MVT	REVISED -	<b>STATE OF ILLINOIS</b> <b>DEPARTMENT OF TRANSPORTATION</b>	US 41 (SKOKIE HIGHWAY) OVER DES PLAINES RIVER PIER REPAIRS S.N. 049-0029	F.O.P. RTE.	SECTION	COUNTY	TOTAL SHEETS	SHEET NO.	
Default	0-0029.dgn	DRAWN - MVT	REVISED -			346	124X-BIBRI	LAKE	24	11	
	PLOT SCALE * 100.0000 / in.	CHECKED - RTB	REVISED -			SCALE: SHEET B OF 11 SHEETS STA. TO STA.		CONTRACT NO. 62A16			
	PLOT DATE * 1/15/2015	DATE -	REVISED -			ILLINOIS FED. AID PROJECT					

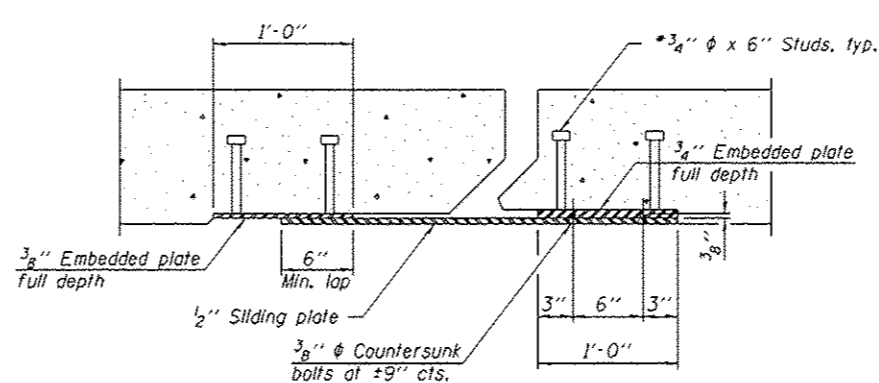




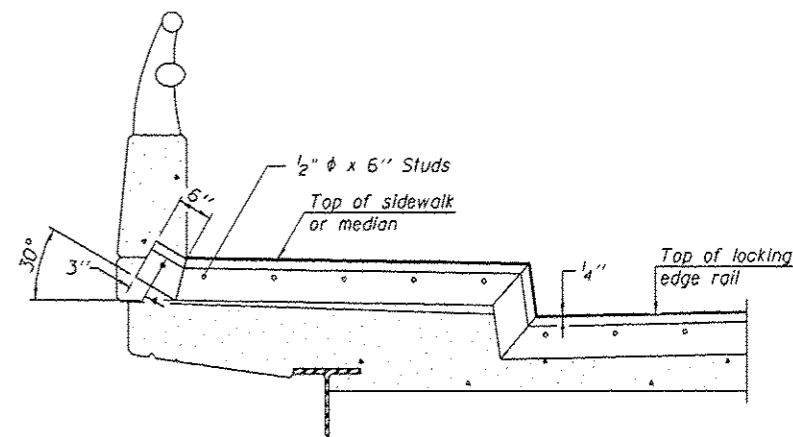
PLAN  
(For skews  $\leq 30^\circ$ )



PLAN  
(For skews  $> 30^\circ$ )  
Showing point block

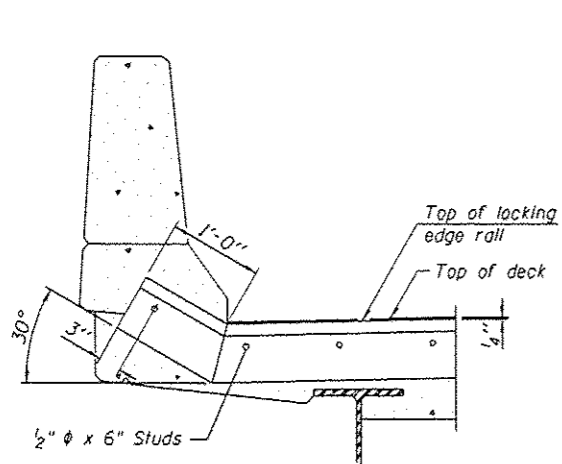


SECTION C-C

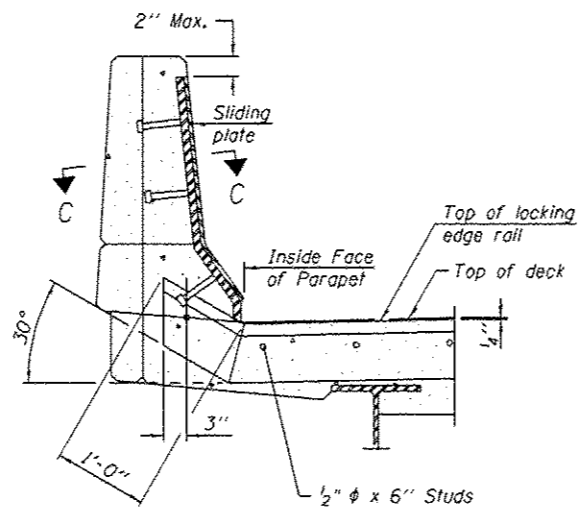


TYPICAL END TREATMENT  
AT SIDEWALK OR MEDIAN

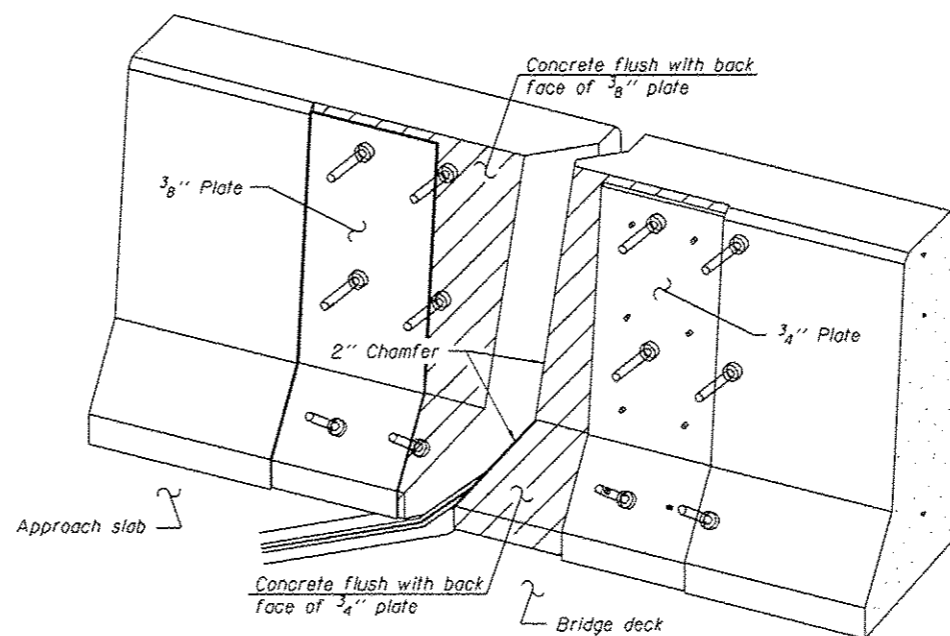
Shorter plates with a single row of studs at 12" cts. may be necessary on medians which are shallower than 9". See manufacturer's recommendation.



SECTION A-A



SECTION B-B



TRIMETRIC VIEW  
(Showing back plates only)

NOTES:

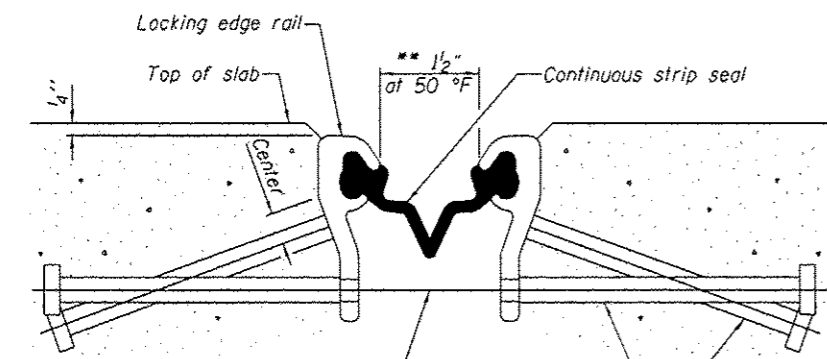
The strip seal shall be made continuous and shall have a minimum thickness of  $\frac{1}{4}$ ". The configuration of the strip seal shall match the configuration of the Locking Edge Rails.

The height and thickness of the Locking Edge Rails shown are minimum dimensions. The actual configuration of the Locking Edge Rails and matching strip seal may vary from manufacturer to manufacturer. Flanged edge rails will not be allowed.

The inside of the Locking Edge Rail groove shall be free of weld residue. Locking Edge Rails may be spliced at slope discontinuities and stage construction joints.

The manufacturer's recommended installation methods shall be followed. All steel components shall be galvanized after fabrication according to Article 520.03 of the Standard Specifications.

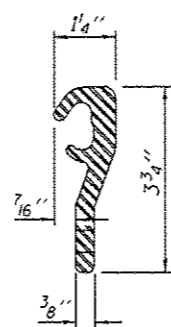
Maximum space between rail segments at stage lines shall be  $\frac{3}{16}$ ", sealed with a suitable sealant



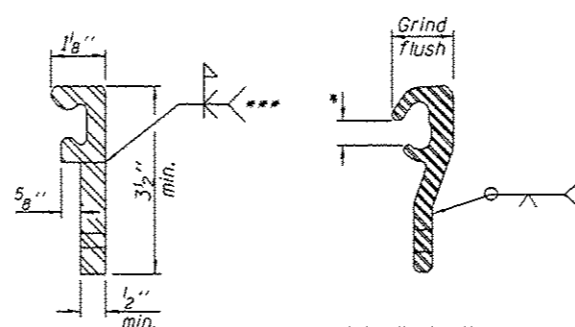
SECTION THRU STRIP SEAL JOINT  
FOR OVERLAY OVER DECK BEAMS

$\frac{7}{16}$ "  $\phi$  holes at 4'-0" cts. for  $\frac{3}{8}$ "  $\phi$  bolts. All bolts shall be burned, sawed, or chipped off flush with the plates after forms are removed, typ.

Place  $\frac{1}{2}$ "  $\phi$  x 6" granular or solid flux filled headed studs conforming to Article 1006.32 of the Std. Specs., automatically end welded at 1'-0" alt. cts.



ROLLED  
(EXTRUDED) RAIL



WELDED RAIL

LOCKING EDGE RAIL

LOCKING EDGE  
RAIL SPLICE

Rolled rail shown, welded rail similar.

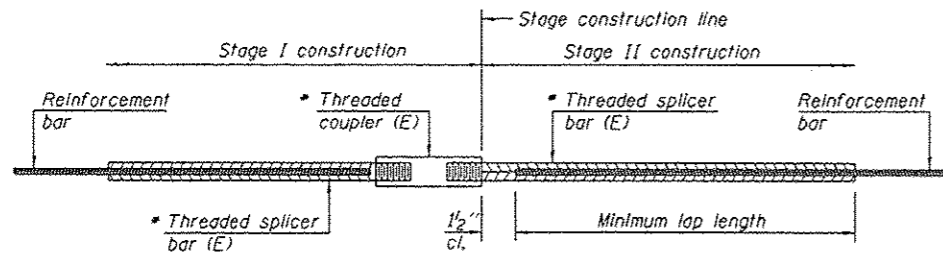
- \* Omit weld at seal opening.
- \*\* The minimum dimension shall be  $\frac{1}{2}$ " for installation purposes.
- \*\*\* Back gouge not required if complete joint penetration is verified by mock-up.

BILL OF MATERIAL

Item	Unit	Total
Preformed Joint Strip Seal	Foot	184

EJ-SSJ 1-27-12

FILE NAME : c:\pwwork\p\dot\hardnetb\0101671\049-0029.dgn	USER NAME : hardnetb	DESIGNED - MVT	REVISED -	<b>STATE OF ILLINOIS DEPARTMENT OF TRANSPORTATION</b>	<b>US 41 (SKOKIE HIGHWAY) OVER DES PLAINES RIVER PREFORMED JOINT STRIP SEAL S.N. 049-0029</b>	F.A.P. RTE. 346	SECTION 124X-BIB9	COUNTY LAKE	TOTAL SHEETS 24	SHEET NO. 13		
PLOT SCALE = 100.0000' / in.	CHECKED - RTB	REVISI	REVISI			SCALE: SHEET NO. 10 OF 11 SHEETS STA. TO STA.		CONTRACT NO. 62A16				
PLOT DATE = 1/15/2015	DATE -	REVISI	REVISI			[ILLINOIS] FED. AID PROJECT						



STANDARD BAR SPLICER ASSEMBLY

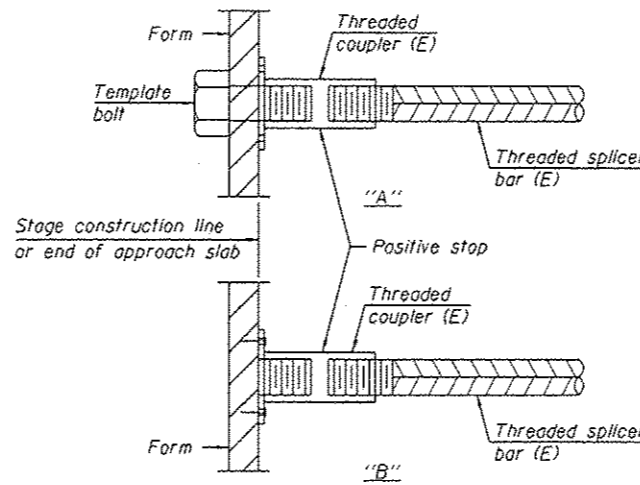
Bar size to be spliced	Minimum Lap Lengths					
	Table 1	Table 2	Table 3	Table 4	Table 5	Table 6
3, 4	1'-5"	1'-11"	2'-1"	2'-4"	2'-7"	2'-11"
5	1'-9"	2'-5"	2'-7"	2'-11"	3'-3"	3'-8"
6	2'-1"	2'-11"	3'-1"	3'-6"	3'-10"	4'-5"
7	2'-9"	3'-10"	4'-2"	4'-8"	5'-2"	5'-10"
8	3'-8"	5'-1"	5'-5"	6'-2"	6'-9"	7'-8"
9	4'-7"	6'-5"	6'-10"	7'-9"	8'-7"	9'-8"

- Table 1: Black bar, 0.8 Class C
- Table 2: Black bar, Top bar lap, 0.8 Class C
- Table 3: Epoxy bar, 0.8 Class C
- Table 4: Epoxy bar, Top bar lap, 0.8 Class C
- Table 5: Epoxy bar, Class C
- Table 6: Epoxy bar, Top bar top, Class C

Threaded splicer bar length = min. lap length + 1/2" + thread length

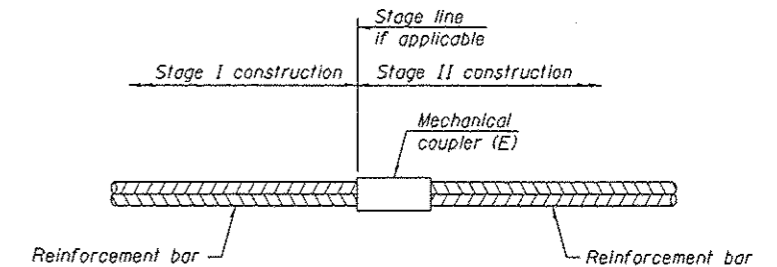
\* Epoxy not required on Bar Splicer Assembly components used in conjunction with black bars.

Location	Bar size	No. assemblies required	Table for minimum lap length
Abutment	#6	8	3
Deck	#5	8	3



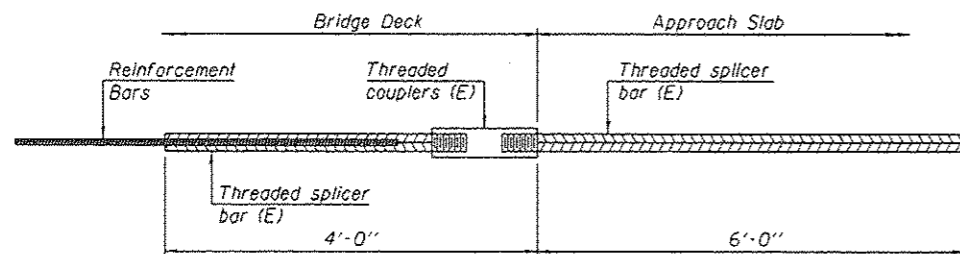
INSTALLATION AND SETTING METHODS

"A":  
 "B": Set bar splicer assembly by means of a template bolt.  
 Set bar splicer assembly by nailing to wood forms or cementing to steel forms.  
 (E) : Indicates epoxy coating.



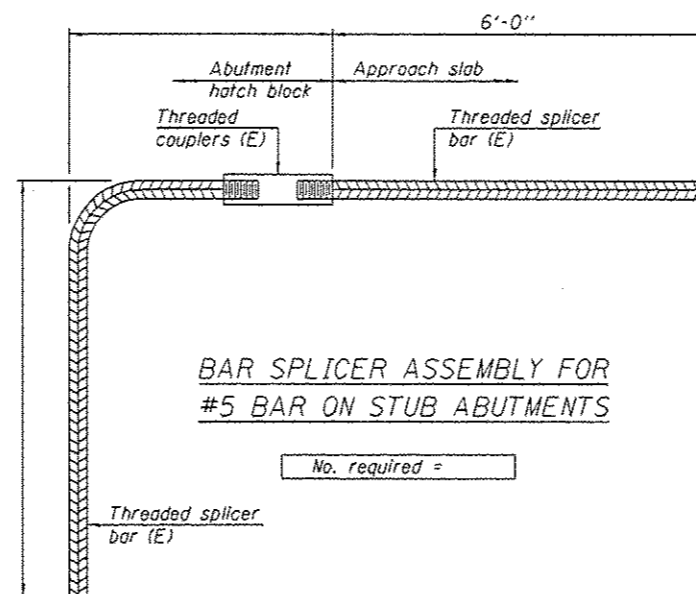
STANDARD MECHANICAL SPLICER

Location	Bar size	No. assemblies required



BAR SPLICER ASSEMBLY FOR #5 BAR ON INTEGRAL OR SEMI-INTEGRAL ABUTMENTS

No. required =



BAR SPLICER ASSEMBLY FOR #5 BAR ON STUB ABUTMENTS

No. required =

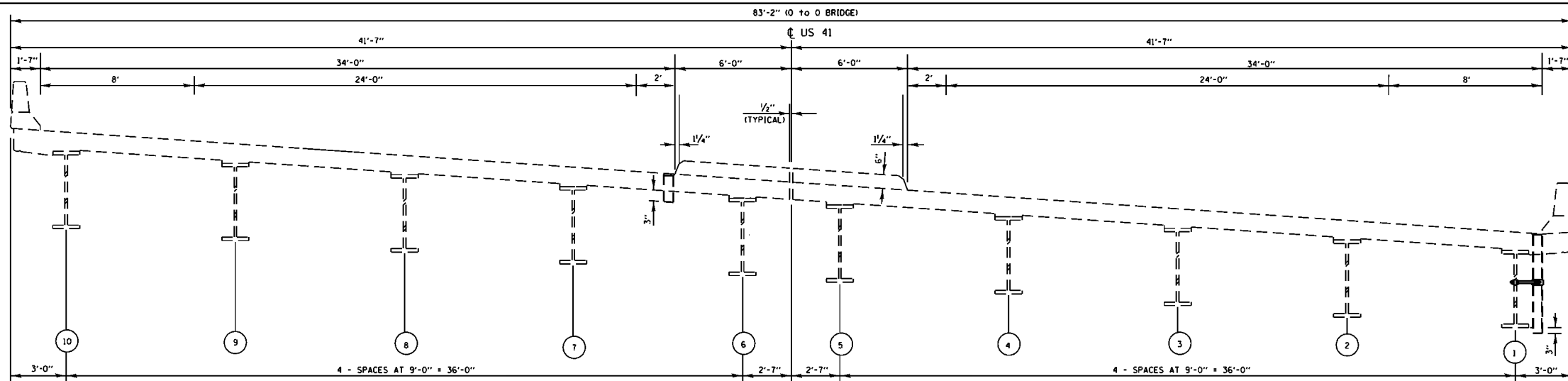
NOTES

Splicer bars shall be deformed with threaded ends and have a minimum 60 ksi yield strength.  
 All reinforcement shall be lapped and tied to the splicer bars.  
 Bar splicer assemblies shall be epoxy coated according to the requirements for reinforcement bars. See Section 508 of the Standard Specifications.  
 See approved list of bar splicer assemblies and mechanical splicers for alternatives.

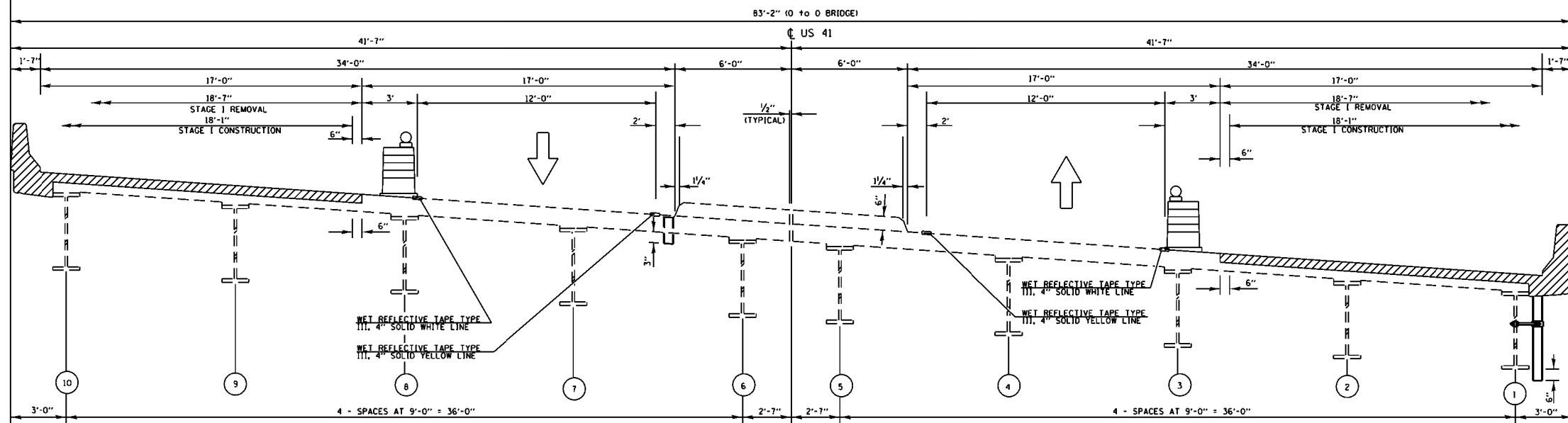
BSD-1

1-27-12

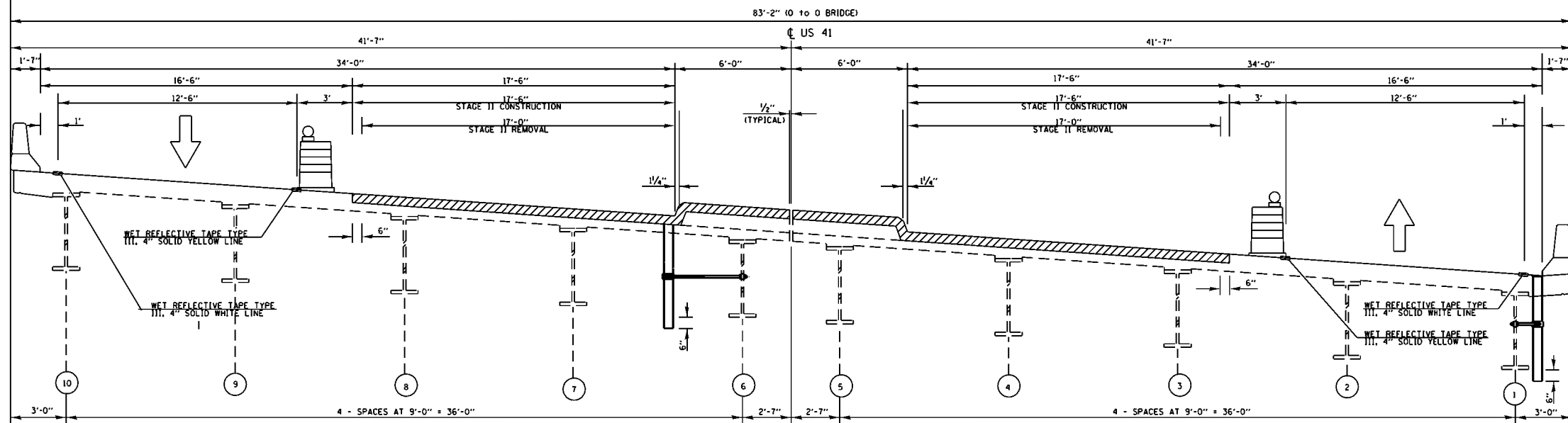
FILE NAME :	USER NAME : hardnetbr	DESIGNED : MVT	REVISED :	<b>STATE OF ILLINOIS DEPARTMENT OF TRANSPORTATION</b>	US 41 (SKOKIE HIGHWAY) OVER DES PLAINES RIVER BAR SPLICER ASSEMBLY S.N. 049-0029	F.A.P. RTE.	SECTION	COUNTY	TOTAL SHEETS	SHEET NO.
c:\pwork\psidot\hardnetbr\0101671\049-0029.dgn	DRAWN : MVT	REVISED :	346			124X-B(8R)	LAKE	24	14	
PLOT SCALE = 100.0000' / 1"	CHECKED : RTB	REVISED :	CONTRACT NO. 62A16							
PLOT DATE = 1/15/2015	DATE :	REVISED :	ILLINOIS FED. AID PROJECT							



**TYPICAL CROSS SECTION - EXISTING**  
(LOOKING NORTH)



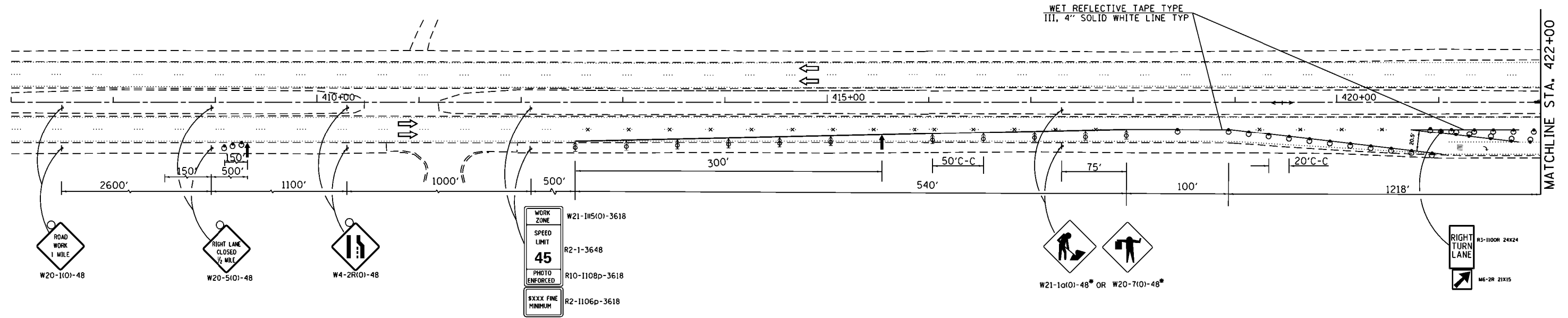
**TYPICAL CROSS SECTION - STAGE I**  
(LOOKING NORTH)



**TYPICAL CROSS SECTION - STAGE II**  
(LOOKING NORTH)

FILE NAME = c:\pwwork\pwwidat\hardnettbr\d0416398\09315-sh1-plan.dgn	USER NAME = hardnettbr	DESIGNED -	REVISED -	<b>STATE OF ILLINOIS</b> <b>DEPARTMENT OF TRANSPORTATION</b>	US 41 (SKOKIE HIGHWAY) OVER DES PLAINES RIVER DECK FORMED CONCRETE REPAIR S.N. 049-0029				F.A.P. RTE.	SECTION	COUNTY	TOTAL SHEETS	SHEET NO.
	PLOT SCALE = 100.0000' / 1in.	CHECKED -	REVISED -						346	124X-BIBRI	LAKE	24	15
Default	PLOT DATE = 12/30/2014	DATE -	REVISED -	SCALE:	SHEET	OF	SHEETS	STA.	TO	STA.	CONTRACT NO. 62A16		
											ILLINOIS FED. AID PROJECT		

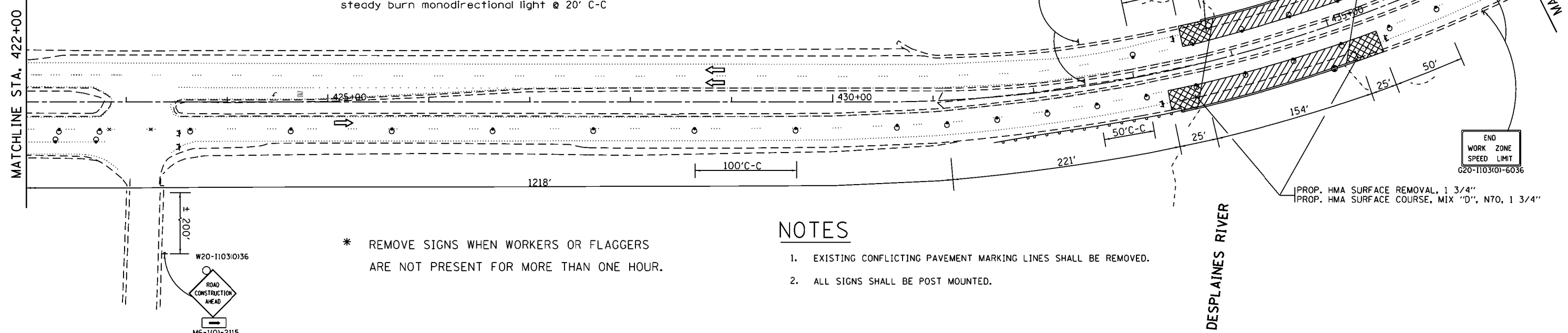
U.S. ROUTE 41 (SKOKIE HWY)



**SYMBOLS**

- Arrow board
- Work area
- Sign
- Drums with steady burning monodirectional light
- Pavement marking removal
- Direction of traffic
- Type III barricade with flashing light
- Direction indicator barricade with steady burn monodirectional light @ 20' C-C

U.S. ROUTE 41 (SKOKIE HWY)



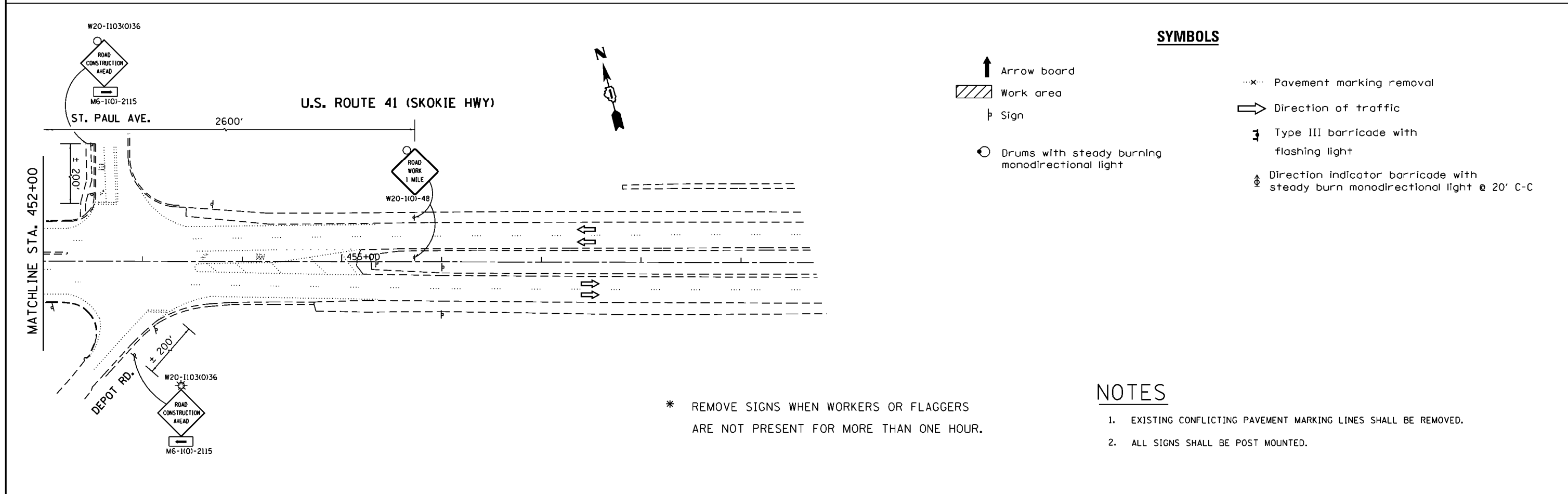
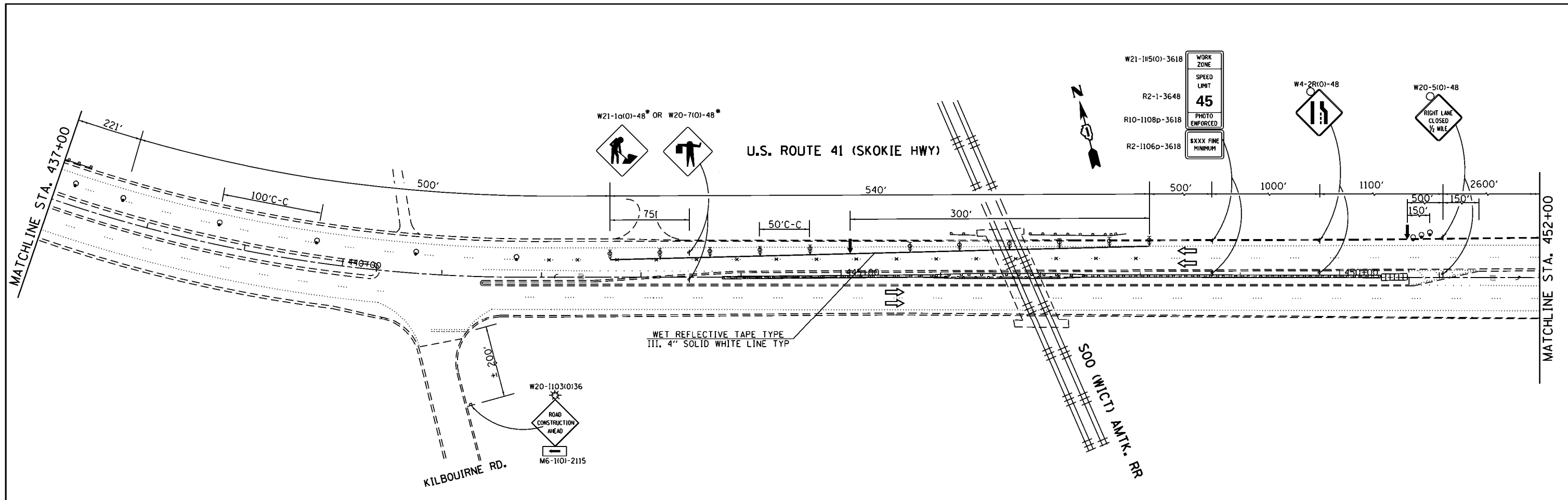
**NOTES**

\* REMOVE SIGNS WHEN WORKERS OR FLAGGERS ARE NOT PRESENT FOR MORE THAN ONE HOUR.

1. EXISTING CONFLICTING PAVEMENT MARKING LINES SHALL BE REMOVED.
2. ALL SIGNS SHALL BE POST MOUNTED.

FILE NAME = c:\pwwork\pwwidat\hardnettr\d0416398\09315-shr-Stagel.dgn	USER NAME = hardnettr	DESIGNED -	REVISED -	<b>STATE OF ILLINOIS DEPARTMENT OF TRANSPORTATION</b>	<b>STAGE I US ROUTE 41 (IL ROUTE 21 TO PARK AVENUE)</b>			F.A.P. RTE.	SECTION	COUNTY	TOTAL SHEETS	SHEET NO.
	PLOT SCALE = 100.0000' / 1" / 1" / 1"	CHECKED -	REVISED -		346	124X-B(BR)	LAKE	24	16			
Default	PLOT DATE = 1/7/2015	DATE -	REVISED -	SCALE: 1" = 50'	SHEET OF SHEETS	STA. TO STA.	CONTRACT NO. 62A16					
ILLINOIS FED. AID PROJECT												





**SYMBOLS**

- Arrow board
- Work area
- Sign
- Drums with steady burning monodirectional light
- Pavement marking removal
- Direction of traffic
- Type III barricade with flashing light
- Direction indicator barricade with steady burn monodirectional light @ 20' C-C

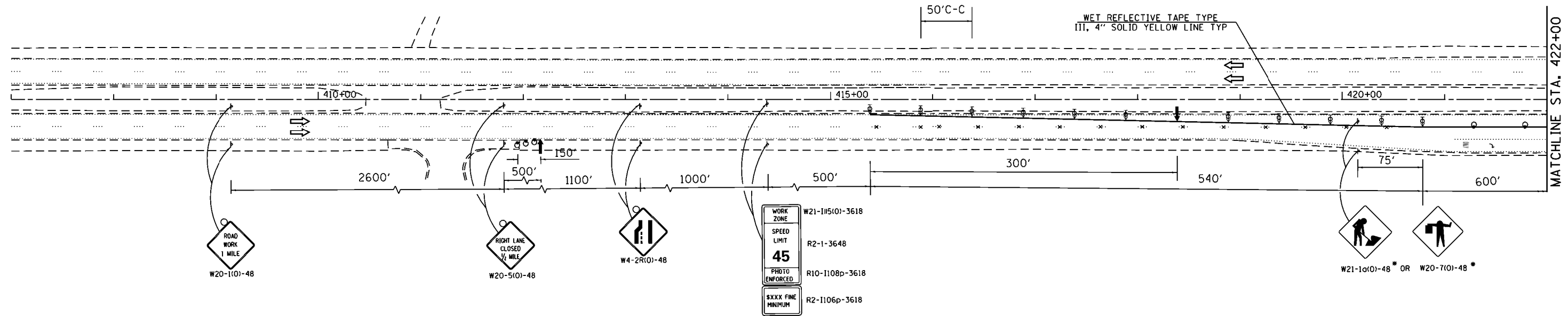
\* REMOVE SIGNS WHEN WORKERS OR FLAGGERS ARE NOT PRESENT FOR MORE THAN ONE HOUR.

**NOTES**

1. EXISTING CONFLICTING PAVEMENT MARKING LINES SHALL BE REMOVED.
2. ALL SIGNS SHALL BE POST MOUNTED.

FILE NAME = c:\pwwork\pwwork\hardnettr\d0416398\09315-sh1-Stage1.dgn	USER NAME = hardnettr	DESIGNED -	REVISED -	<b>STATE OF ILLINOIS DEPARTMENT OF TRANSPORTATION</b>	<b>STAGE I US ROUTE 41 (IL ROUTE 21 TO PARK AVENUE)</b>			F.A.P. RTE.	SECTION	COUNTY	TOTAL SHEETS	SHEET NO.		
	PLOT SCALE = 100.0000' / 1" =	CHECKED -	REVISED -		SCALE: 1" = 50'	SHEET	OF	SHEETS	STA.	TO	STA.	346	124X-B(BR)	LAKE
Default	PLOT DATE = 12/30/2014	DATE -	REVISED -					CONTRACT NO. 62A16			ILLINOIS FED. AID PROJECT			

U.S. ROUTE 41 (SKOKIE HWY)



**SYMBOLS**

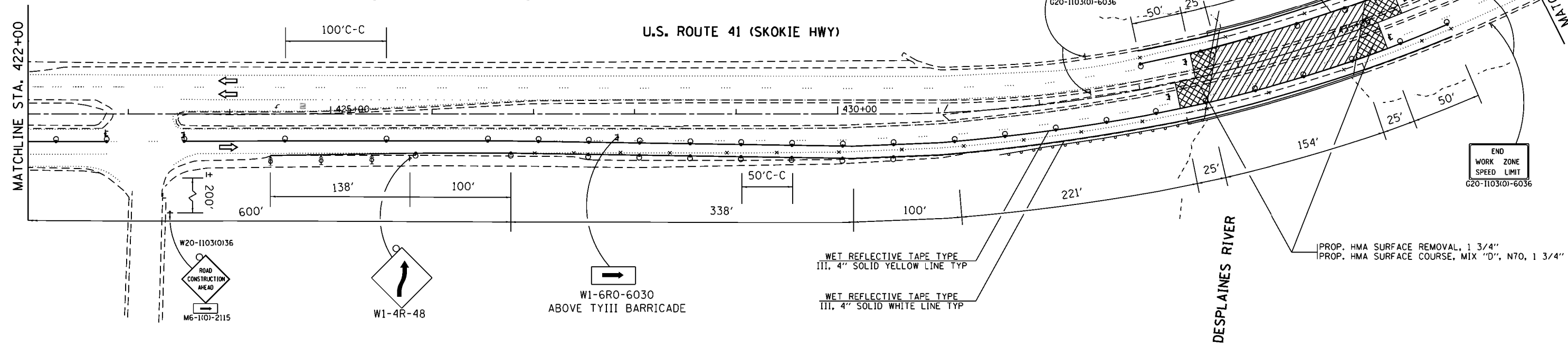
- Arrow board
- Work area
- Sign
- Drums with steady burning monodirectional light
- Pavement marking removal
- Direction of traffic
- Type III barricade with flashing light
- Direction indicator barricade with steady burn monodirectional light @ 20' C-C

\* REMOVE SIGNS WHEN WORKERS OR FLAGGERS ARE NOT PRESENT FOR MORE THAN ONE HOUR.

**NOTES**

1. EXISTING CONFLICTING PAVEMENT MARKING LINES SHALL BE REMOVED.
2. ALL SIGNS SHALL BE POST MOUNTED.

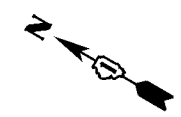
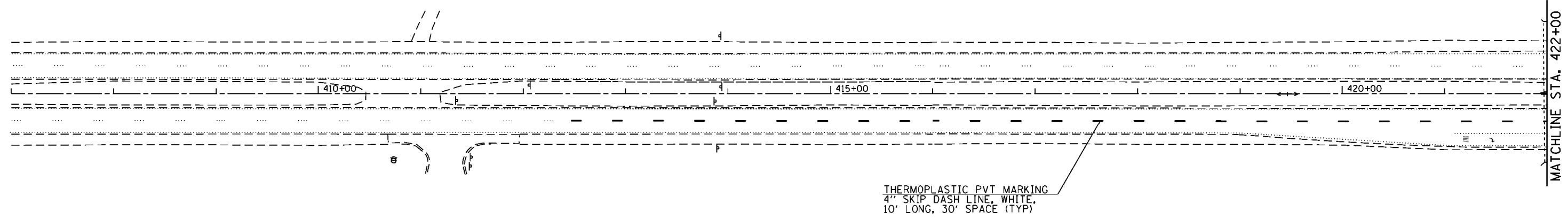
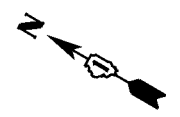
U.S. ROUTE 41 (SKOKIE HWY)



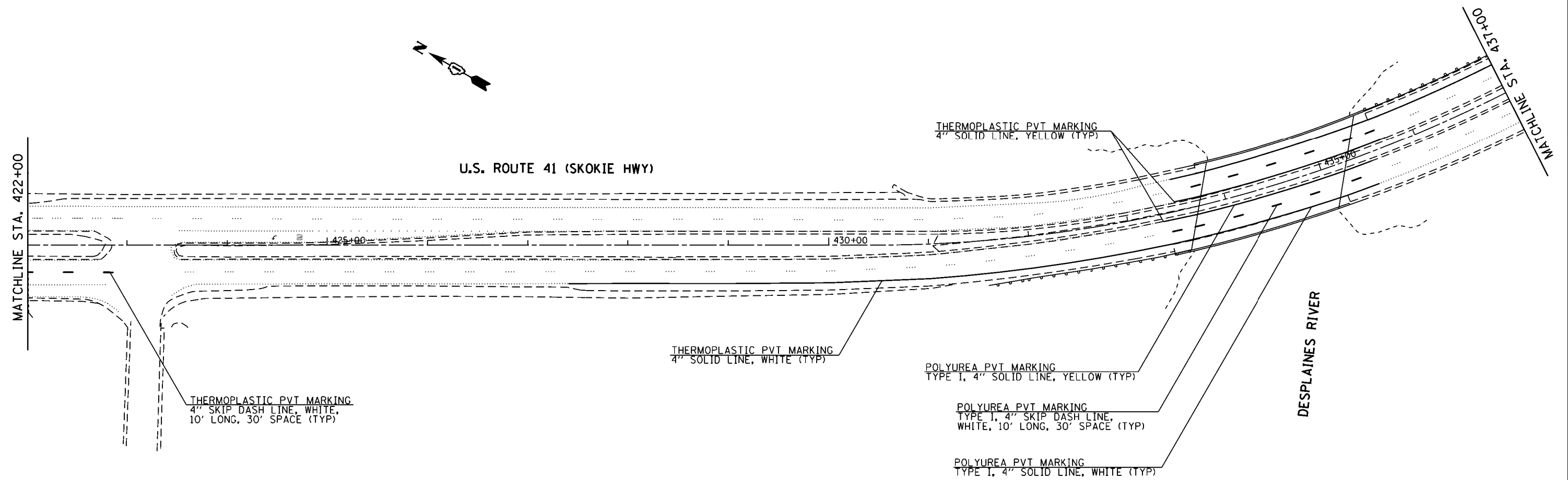
FILE NAME = c:\pwwork\pwwidat\hardnettr\d0416398\09315-sh1-Stage2.dgn	USER NAME = hardnettr	DESIGNED -	REVISED -	<b>STATE OF ILLINOIS DEPARTMENT OF TRANSPORTATION</b>	<b>STAGE II US ROUTE 41 (IL ROUTE 21 TO PARK AVENUE)</b>			F.A.P. RTE.	SECTION	COUNTY	TOTAL SHEETS	SHEET NO.		
	PLOT SCALE = 100.0000' / 1" / 1" / 1"	CHECKED -	REVISED -		SCALE: 1" = 50'	SHEET	OF	SHEETS	STA.	TO	STA.	346	124X-B(BR)	LAKE
Default	PLOT DATE = 1/7/2015	DATE -	REVISED -							CONTRACT NO. 62A16			ILLINOIS FED. AID PROJECT	



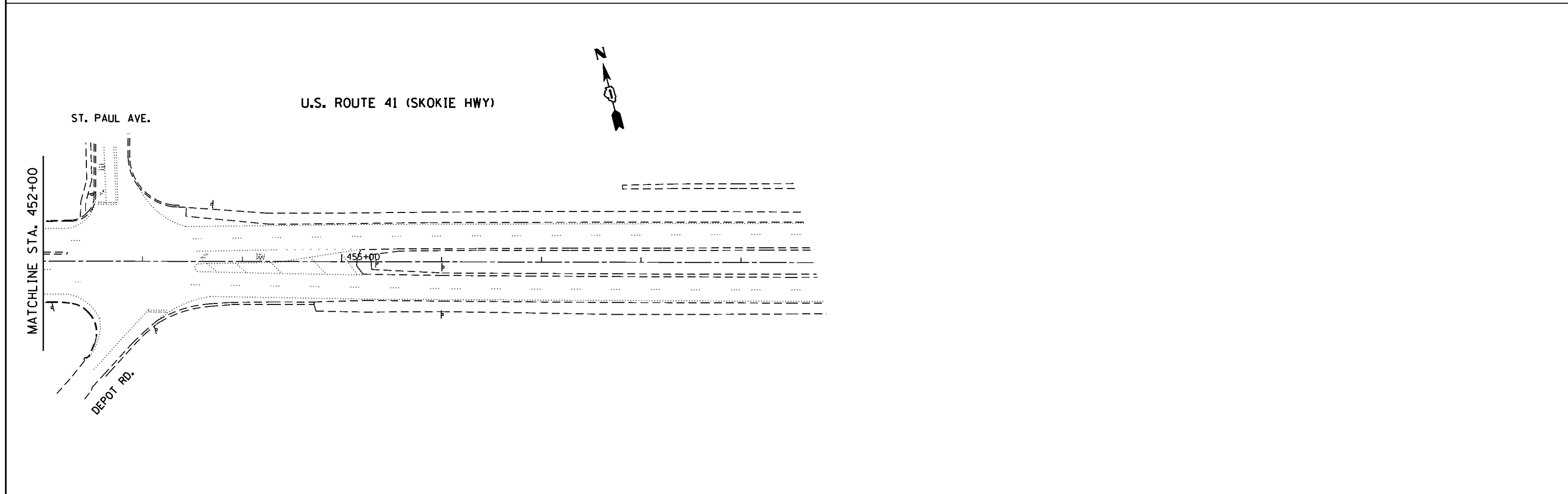
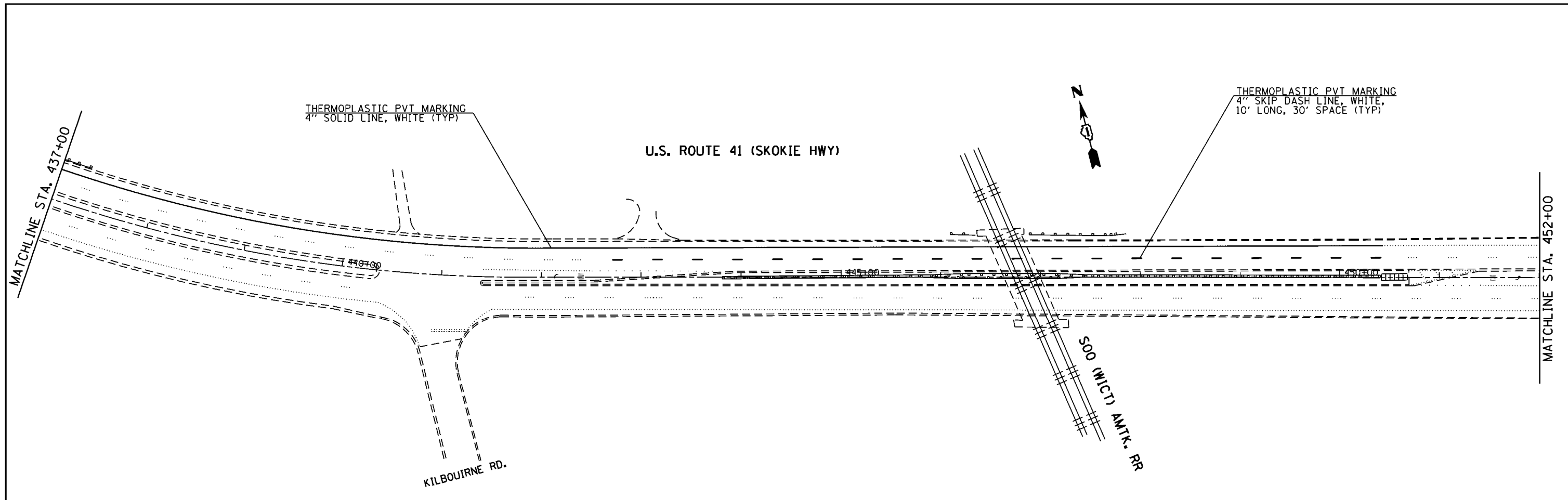
U.S. ROUTE 41 (SKOKIE HWY)



U.S. ROUTE 41 (SKOKIE HWY)



FILE NAME = c:\pwwork\pwwidat\hardnettbr\d0416398\09315-shr-plan.dgn	USER NAME = hardnettbr	DESIGNED -	REVISED -	<b>STATE OF ILLINOIS DEPARTMENT OF TRANSPORTATION</b>	<b>ROADWAY PLAN</b>			F.A.P. RTE.	SECTION	COUNTY	TOTAL SHEETS	SHEET NO.
	PLLOT SCALE = 100.0000' / 1in.	CHECKED -	REVISED -		<b>US ROUTE 41 (IL ROUTE 21 TO PARK AVENUE)</b>			346	124X-B(BR)	LAKE	24	20
Default	PLLOT DATE = 12/30/2014	DATE -	REVISED -	SCALE: 1" = 50'			SHEET OF SHEETS	STA. TO STA.	ILLINOIS FED. AID PROJECT CONTRACT NO. 62A16			



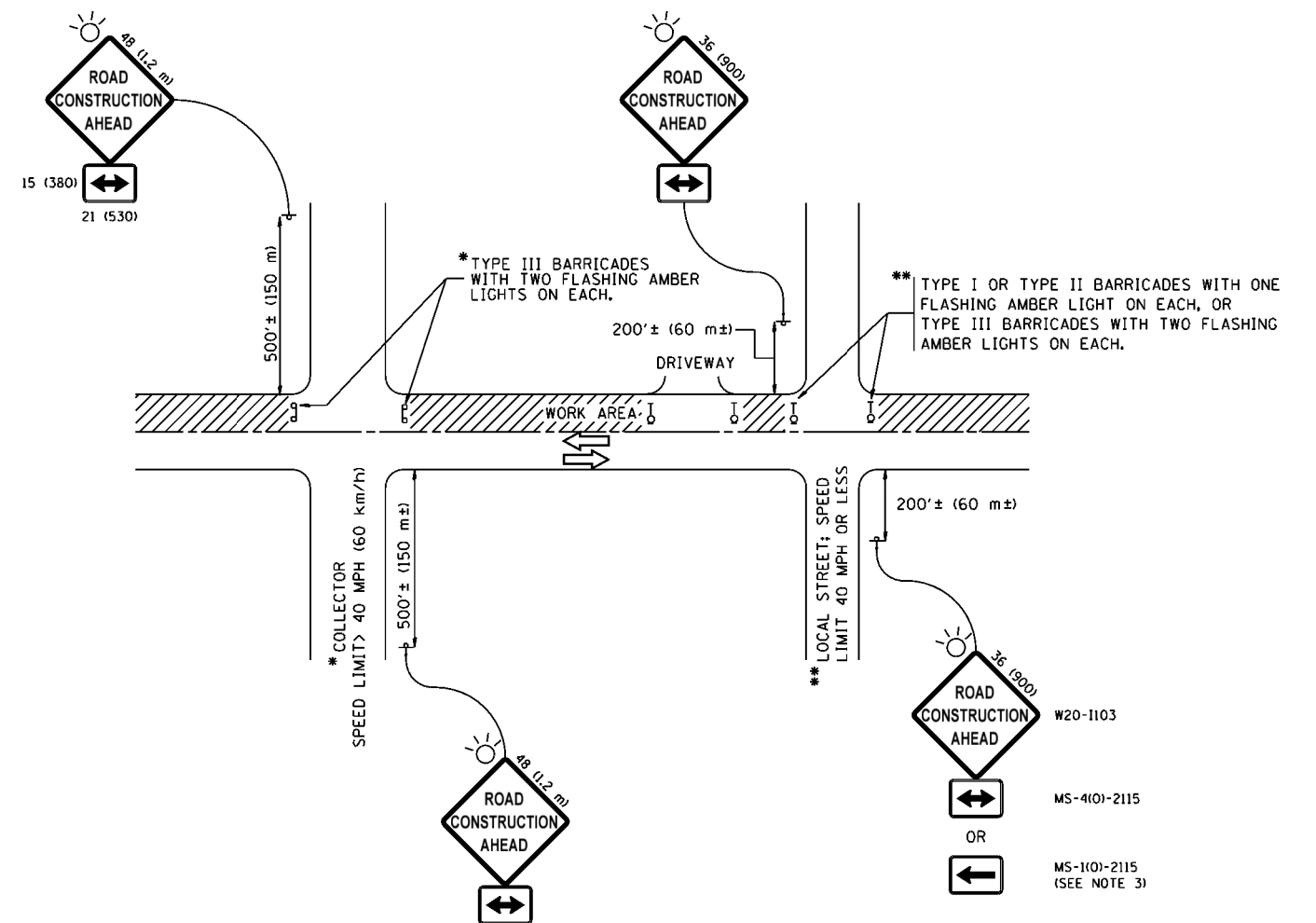
FILE NAME =	USER NAME = hardnettbr	DESIGNED -	REVISED -
c:\pwwork\pwwork\hardnettbr\d0416398\09315-sht-plan.dgn		DRAWN -	REVISED -
		CHECKED -	REVISED -
		DATE -	REVISED -
Default	PLOT SCALE = 100.0000' / 1in.		
	PLOT DATE = 12/30/2014		

**STATE OF ILLINOIS  
DEPARTMENT OF TRANSPORTATION**

**ROADWAY PLAN  
US ROUTE 41 (IL ROUTE 21 TO PARK AVENUE)**

SCALE: 1" = 50'      SHEET      OF      SHEETS      STA.      TO      STA.

F.A.P. RTE.	SECTION	COUNTY	TOTAL SHEETS	SHEET NO.
346	124X-B(BR)	LAKE	24	21
CONTRACT NO. 62A16				
ILLINOIS FED. AID PROJECT				



## TRAFFIC CONTROL AND PROTECTION FOR SIDE ROADS, INTERSECTIONS, AND DRIVEWAYS

### NOTES:

#### A. FOR NO LANE RESTRICTION ON THE SIDE ROAD OR DRIVEWAYS

1. SIDE ROAD WITH A SPEED LIMIT OF 40 MPH (60 km/h) OR LESS AS SHOWN ON THE DRAWING AND AS DIRECTED BY THE ENGINEER:
  - a) ONE ROAD CONSTRUCTION AHEAD SIGN 36 x 36 (900x900) WITH A FLASHER ON IT APPROXIMATELY 200' (60 m) IN ADVANCE OF THE MAIN ROUTE.
  - b) THE CLOSED PORTION OF THE MAIN ROUTE SHALL BE PROTECTED BY BLOCKING WITH TYPE I, TYPE II OR TYPE III BARRICADES, 1/3 OF THE CROSS SECTION OF THE CLOSED PORTION.
2. SIDE ROAD WITH A SPEED LIMIT GREATER THAN 40 MPH (60 km/h) AS SHOWN ON THE DRAWING AND AS DIRECTED BY THE ENGINEER:
  - a) ONE ROAD CONSTRUCTION AHEAD SIGN 48 x 48 (1.2 m x 1.2 m) WITH A FLASHER MOUNTED ON IT APPROXIMATELY 500' (150 m) IN ADVANCE OF THE MAIN ROUTE.
  - b) THE CLOSED PORTION OF THE MAIN ROUTE SHALL BE PROTECTED BY BLOCKING WITH TYPE III BARRICADES, 1/2 OF THE CROSS SECTION OF THE CLOSED PORTION.
3. WHEN THE SIDE ROAD LIES BETWEEN THE BEGINNING OF THE MAINLINE SIGNING AND THE WORK ZONE, A SINGLE HEADED ARROW (M6-1) SHALL BE USED IN LIEU OF THE DOUBLE HEADED ARROW (M6-4).

#### B. FOR A LANE CLOSURE ON A SIDE ROAD OR DRIVEWAY:

- USE APPLICABLE PORTIONS OF THE TYPICAL APPLICATION OF TRAFFIC CONTROL DEVICES (STD. 701501, STD. 701606 OR THE APPROPRIATE STANDARD). THE SPACING OF SIGNS AND BARRICADES SHALL BE ADJUSTED FOR FIELD CONDITIONS AS DIRECTED BY THE ENGINEER. THE DIRECTIONAL ARROW SHALL BE COVERED OR REMOVED WHEN NO LONGER CONSISTENT WITH THE SIDE ROAD LANE CLOSURE.
- C. ADVANCE WARNING SIGNS ARE TO BE OMITTED ON DRIVEWAY UNLESS OTHERWISE NOTED.
  - D. THE TRAFFIC CONTROL AND PROTECTION FOR SIDE ROADS, INTERSECTIONS, AND DRIVEWAYS SHALL BE INCIDENTAL TO THE COST OF SPECIFIED TRAFFIC CONTROL STANDARDS OR ITEMS.

All dimensions are in millimeters (inches) unless otherwise shown.

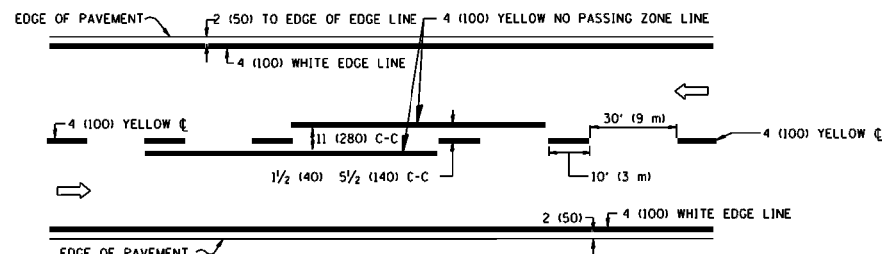
FILE NAME =	USER NAME = hardnettbr	DESIGNED - L.H.A.	REVISED - J.OBERLE 10-18-95
ci:\pwork\pwork\hardnettbr\d0416398\09315-shr-plan.dgn		DRAWN -	REVISED - A. HOUSEH 10-15-96
Default	PLOT SCALE = 100.0000' / 1in.	CHECKED -	REVISED - T. RAMMACHER 01-06-00
	PLOT DATE = 12/30/2014	DATE - 06-89	REVISED - A. SCHUETZE 07-01-13

STATE OF ILLINOIS  
DEPARTMENT OF TRANSPORTATION

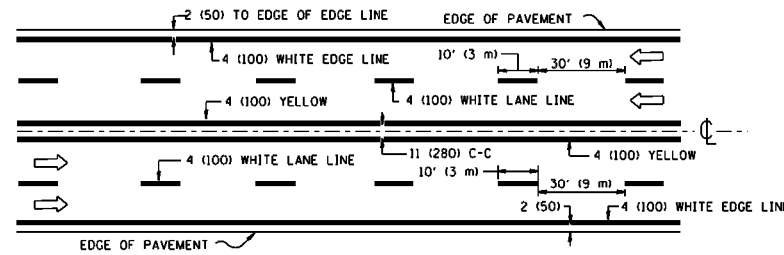
TRAFFIC CONTROL AND PROTECTION FOR  
SIDE ROADS, INTERSECTIONS, AND DRIVEWAYS

SCALE: NONE SHEET 1 OF 1 SHEETS STA. TO STA.

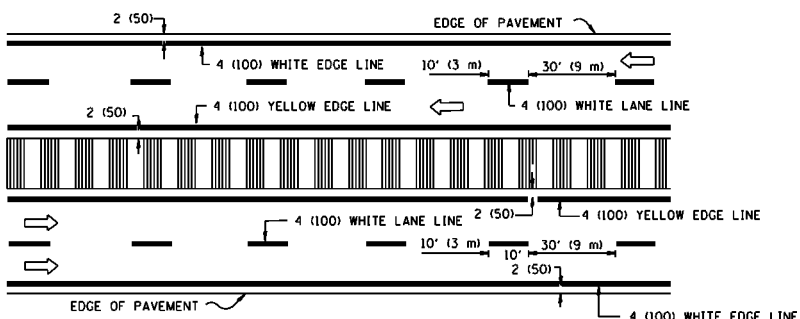
F.A.P. RTE.	SECTION	COUNTY	TOTAL SHEETS	SHEET NO.
346	124X-B(BR)	LAKE	24	22
TC-10			CONTRACT NO. 62A16	
ILLINOIS FED. AID PROJECT				



**2-LANE ROADWAY**



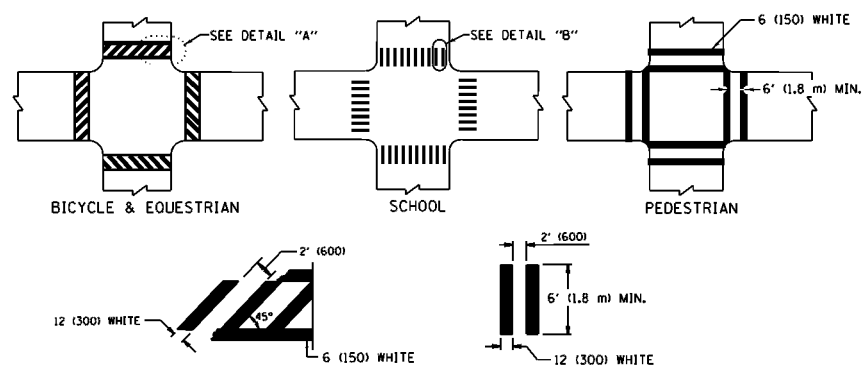
**MULTI-LANE UNDIVIDED**



**MULTI-LANE DIVIDED WITH MOUNTABLE MEDIAN**

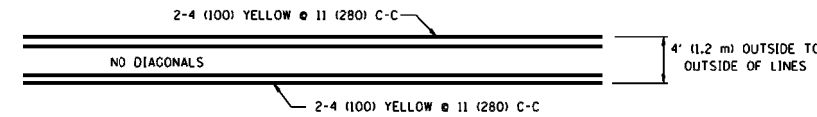
NOTE: MEDIANS WITH BARRIER CURB DO NOT REQUIRE AN EDGE LINE

**TYPICAL LANE AND EDGE LINE MARKING**

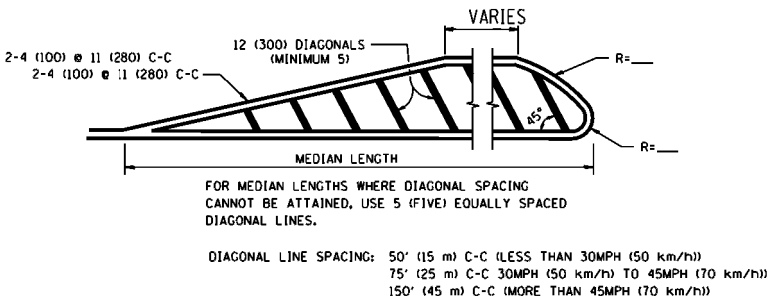


**TYPICAL CROSSWALK MARKING**

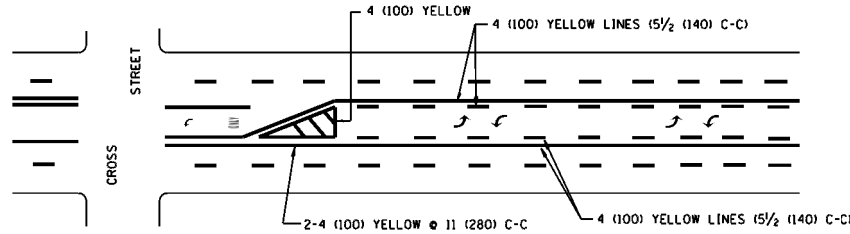
\* MARKINGS SHALL BE INSTALLED PARALLEL TO THE CENTERLINE OF THE ROAD WHICH IT CROSSES



**4' (1.2 m) WIDE MEDIANS ONLY**

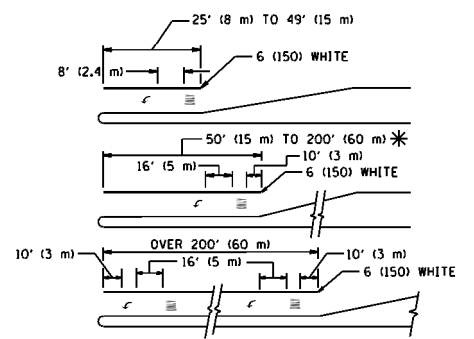


**MEDIANS OVER 4' (1.2 m) WIDE**



A MINIMUM OF TWO PAIRS OF TURN ARROWS SHALL BE USED, WHITE IN COLOR. ADDITIONAL PAIRS SHALL BE PLACED AT 200' (60 m) TO 300' (90 m) INTERVALS.

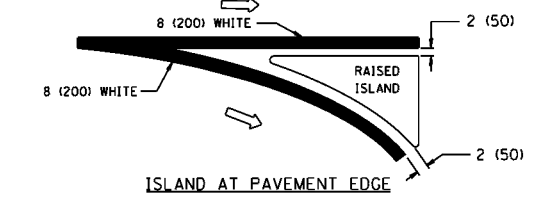
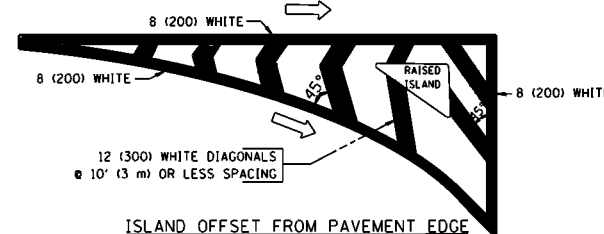
**MEDIAN WITH TWO-WAY LEFT TURN LANE TYPICAL PAINTED MEDIAN MARKING**



FULL SIZE LETTERS 8' (2.4 m) AND ARROWS SHALL BE USED.  
AREA = 15.6 SQ. FT. (1.5 m<sup>2</sup>) AREA = 20.8 SQ. FT. (1.9 m<sup>2</sup>)

\* TURN LANES IN EXCESS OF 400' (120 m) IN LENGTH MAY HAVE AN ADDITIONAL SET OF ARROW - "ONLY" INSTALLED MIDWAY BETWEEN THE OTHER TWO SETS OF ARROW - "ONLY".

**TYPICAL LEFT (OR RIGHT) TURN LANE TYPICAL TURN LANE MARKING**



**TYPICAL ISLAND MARKING**

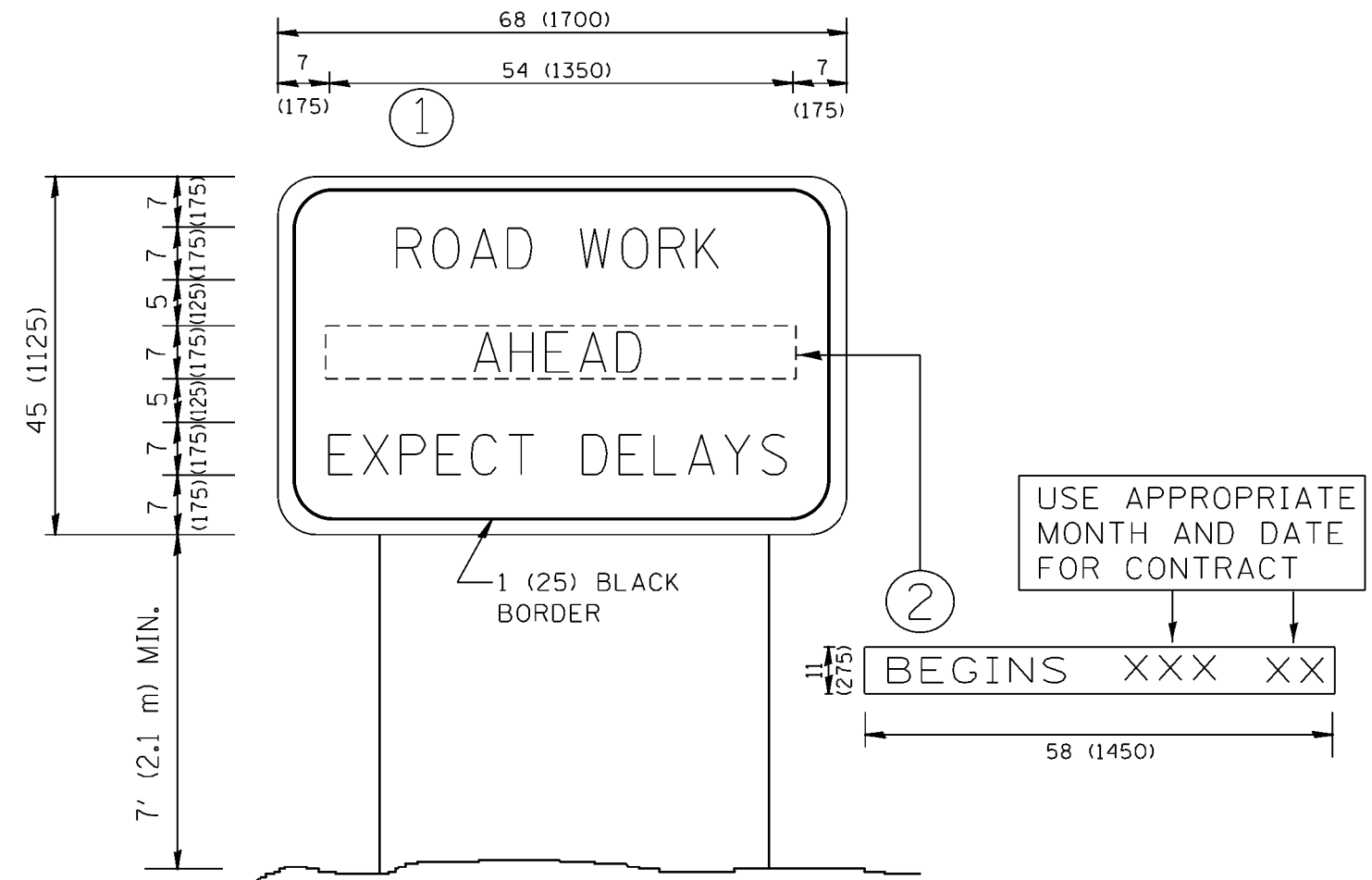
**LANE REDUCTION TRANSITION**

\* LANE REDUCTION ARROWS REQUIRED AT SPEEDS OF 45 MPH OR GREATER OR WHEN SPECIFIED IN PLANS.

TYPE OF MARKING	WIDTH OF LINE	PATTERN	COLOR	SPACING /REMARKS
CENTERLINE ON 2 LANE PAVEMENT	4 (100)	SKIP-DASH	YELLOW	10' (3 m) LINE WITH 30' (9 m) SPACE
CENTERLINE ON MULTI-LANE UNDIVIDED PAVEMENT	2 @ 4 (100)	SOLID	YELLOW	11 (280) C-C
NO PASSING ZONE LINES FOR ONE DIRECTION FOR BOTH DIRECTIONS	4 (100) 2 @ 4 (100)	SOLID SOLID	YELLOW YELLOW	5/2 (140) C-C FROM SKIP-DASH CENTERLINE 11 (280) C-C OMIT SKIP-DASH CENTERLINE BETWEEN
LANE LINES	4 (100) 5 (125) ON FREEWAYS	SKIP-DASH SKIP-DASH	WHITE WHITE	10' (3 m) LINE WITH 30' (9 m) SPACE
DOTTED LINES (EXTENSIONS OF CENTER, LANE OR TURN LANE MARKINGS)	SAME AS LINE BEING EXTENDED	SKIP-DASH	SAME AS LINE BEING EXTENDED	2' (600) LINE WITH 6' (1.8 m) SPACE
EDGE LINES	4 (100)	SOLID	YELLOW-LEFT WHITE-RIGHT	OUTLINE MOUNTABLE MEDIANS IN YELLOW; EDGE LINES ARE NOT USED NEXT TO BARRIER CURB
TURN LANE MARKINGS	6 (150) LINE; FULL SIZE LETTERS & SYMBOLS (8' (2.4m))	SOLID	WHITE	SEE TYPICAL TURN LANE MARKING DETAIL
TWO WAY LEFT TURN MARKING	2 @ 4 (100) EACH DIRECTION 8' (2.4m) LEFT ARROW	SKIP-DASH AND SOLID IN PAIRS	YELLOW WHITE	10' (3 m) LINE WITH 30' (9 m) SPACE FOR SKIP-DASH; 5/2 (140) C-C BETWEEN SOLID LINE AND SKIP-DASH LINE SEE TYPICAL TWO-WAY LEFT TURN MARKING DETAIL
CROSSWALK LINES (PEDESTRIAN) A. DIAGONALS (BIKE & EQUESTRIAN) B. LONGITUDINAL BARS (SCHOOL)	2 @ 6 (150) 12 (300) @ 45° 12 (300) @ 90°	SOLID SOLID SOLID	WHITE WHITE WHITE	NOT LESS THAN 6' (1.8 m) APART 2' (600) APART 2' (600) APART SEE TYPICAL CROSSWALK MARKING DETAILS.
STOP LINES	24 (600)	SOLID	WHITE	PLACE 4' (1.2 m) IN ADVANCE OF AND PARALLEL TO CROSSWALK, IF PRESENT. OTHERWISE, PLACE AT DESIRED STOPPING POINT, PARALLEL TO CROSSROAD CENTERLINE, WHERE POSSIBLE
PAINTED MEDIANS	2 @ 4 (100) WITH 12 (300) DIAGONALS @ 45° NO DIAGONALS USED FOR 4' (1.2 m) WIDE MEDIANS	SOLID	YELLOW; TWO WAY TRAFFIC WHITE; ONE WAY TRAFFIC	11 (280) C-C FOR THE DOUBLE LINE SEE TYPICAL PAINTED MEDIAN MARKING.
GORE MARKING AND CHANNELIZING LINES	8 (200) WITH 12 (300) DIAGONALS @ 45°	SOLID	WHITE	DIAGONALS: 15' (4.5 m) C-C (LESS THAN 30MPH (50 km/h)) 20' (6 m) C-C 30MPH (50 km/h) TO 45MPH (70 km/h) 30' (9 m) C-C (OVER 45MPH (70 km/h))
RAILROAD CROSSING	24 (600) TRANSVERSE LINES; "RR" IS 6' (1.8 m) LETTERS; 16 (400) LINE FOR "X"	SOLID	WHITE	SEE STATE STANDARD 780001 AREA OF: "R"=3.6 SQ. FT. (0.33 m <sup>2</sup> ) EACH "X"=54.0 SQ. FT. (5.0 m <sup>2</sup> )
SHOULDER DIAGONALS	12 (300) @ 45°	SOLID	WHITE - RIGHT YELLOW - LEFT	50' (15 m) C-C (LESS THAN 30MPH (50 km/h)) 75' (25 m) C-C (30 MPH (50 km/h) TO 45MPH (70 km/h)) 150' (45 m) C-C (OVER 45MPH (70 km/h))

FOR FURTHER DETAILS ON PAVEMENT MARKING REFER TO STANDARD SPECIFICATIONS FOR ROAD AND BRIDGE CONSTRUCTION AND STATE STANDARD 780001.

All dimensions are in inches (millimeters) unless otherwise shown.



**NOTES:**

1. USE BLACK LETTERING ON ORANGE BACKGROUND.
2. ERECT SIGNS IN ADVANCE OF THE LOCATION FOR THE "ROAD CONSTRUCTION AHEAD" SIGN AT LOCATIONS AS DIRECTED BY THE ENGINEER.
3. ERECT SIGN ① WITH INSTALLED PANEL ② ONE WEEK PRIOR TO THE START OF CONSTRUCTION.
4. REMOVE PANEL ② SOON AFTER THE START OF CONSTRUCTION.
5. SEE SPECIAL PROVISION FOR "TEMPORARY INFORMATION SIGNING" FOR ADDITIONAL INFORMATION.
6. ONE SIGN ASSEMBLY EQUALS 25.70 SQ. FT. (2.3 SQ. M.)
7. SHALL BE PAID FOR AS TEMPORARY INFORMATION SIGNING.

ALL DIMENSIONS ARE IN INCHES (MILLIMETERS) UNLESS OTHERWISE SHOWN.

FILE NAME =	USER NAME = hardnettbr	DESIGNED -	REVISED - R. MIRS 09-15-97
ci:\pwork\pwork\hardnettbr\d0416398\09315-sh-t-plen.dgn		DRAWN -	REVISED - R. MIRS 12-11-97
Default	PLOT SCALE = 100.0000' / 1in.	CHECKED -	REVISED - T. RAMMACHER 02-02-99
	PLOT DATE = 12/30/2014	DATE -	REVISED - C. JUICIUS 01-31-07

**STATE OF ILLINOIS  
DEPARTMENT OF TRANSPORTATION**

**ARTERIAL ROAD  
INFORMATION SIGN**

SCALE: NONE SHEET 1 OF 1 SHEETS STA. TO STA.

F.A.P. RTE.	SECTION	COUNTY	TOTAL SHEETS	SHEET NO.
346	124X-B(BR)	LAKE	24	24
TC-22		CONTRACT NO.	62A16	
ILLINOIS FED. AID PROJECT				