

F.A.P.	SECTION	COUNTY	TOTAL SHEETS	SHEET NO.
619	(120)I, RS-2; (78-1)I-1, RS-2	PUTNAM	16	1
RTE. IL 71 & IL 26		ILLINOIS	CONTRACT NO. 68C09	

1. COVER SHEET & SIGNATURE
- 2-3. GENERAL NOTES
4. SUMMARY OF QUANTITIES
- 5-7. TYPICAL SECTION
8. LINE DIAGRAM
9. SCHEDULE OF QUANTITIES
- 10-16. CADD STANDARDS

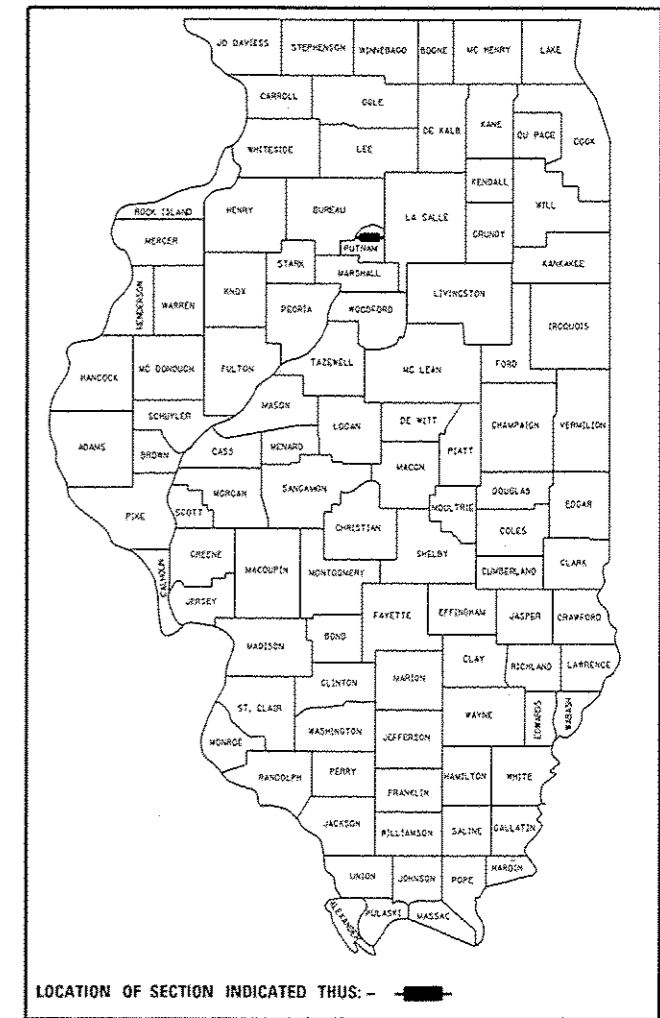
DEPARTMENT OF TRANSPORTATION  
DIVISION OF HIGHWAYS

# PROPOSED HIGHWAY PLANS

FAP 619 & FAS 2370 ROUTE IL 71 & OLD IL 26  
SECTION: (120)I, RS-2; (78-1)I-1, RS-2  
PUTNAM COUNTY

C-94-108-14

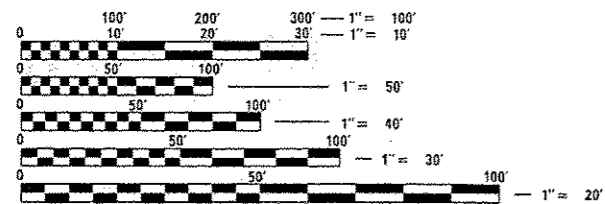
D-94-051-14



HIGHWAY STANDARDS  
701301-04  
701306-03  
701311-03  
701901-04

CADD STANDARDS - INCLUDED AS SHEETS 10-16.  
406101-D4  
440001-D4  
440101-D4  
780001-D4

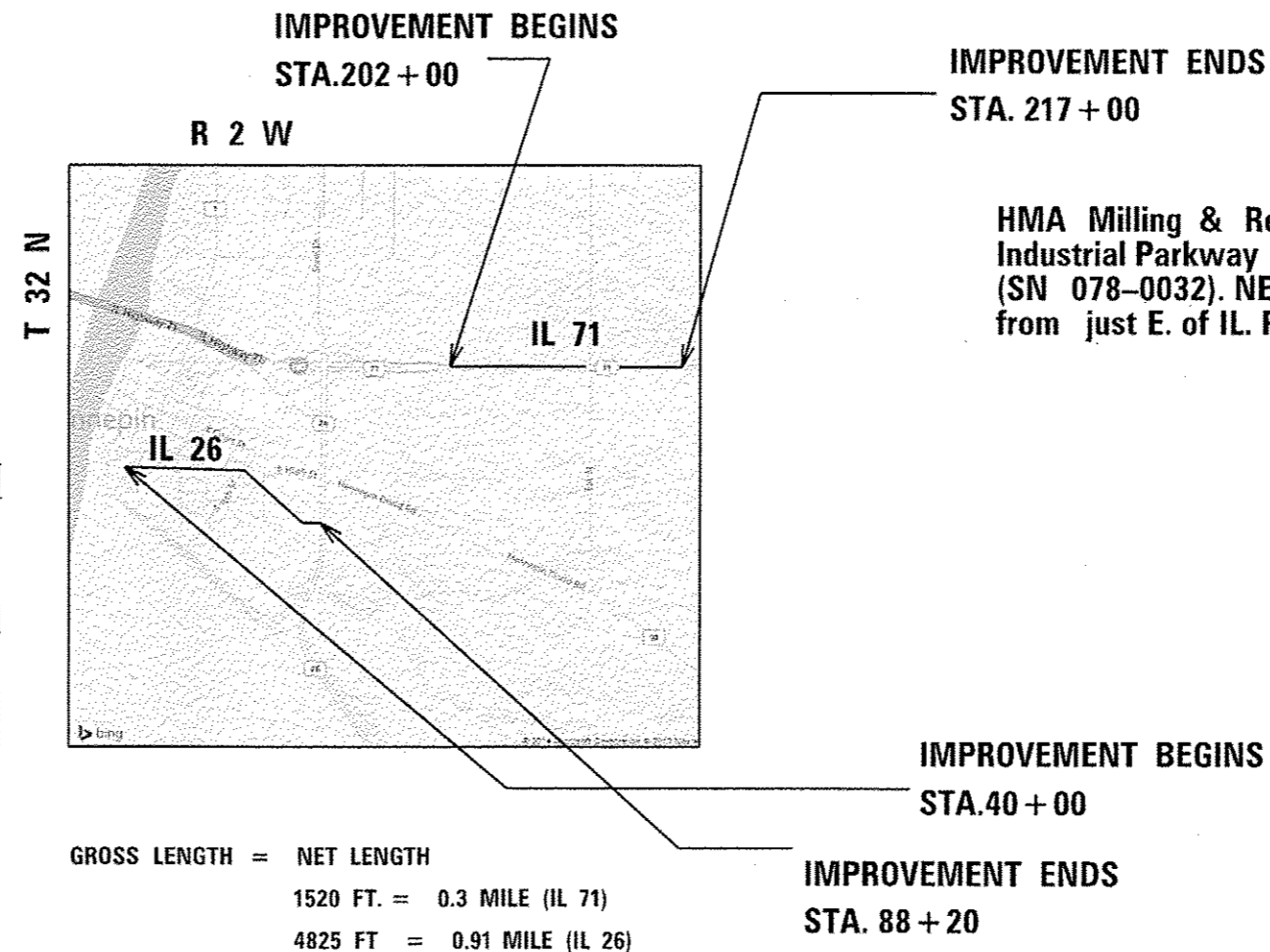
ADT = 3400 & 1050/14  
MU = 9.56% & 13.33%



FULL SIZE PLANS HAVE BEEN PREPARED USING STANDARD ENGINEERING SCALES. REDUCED SIZED PLANS WILL NOT CONFORM TO STANDARD SCALES. IN MAKING MEASUREMENTS ON REDUCED PLANS, THE ABOVE SCALES MAY BE USED.

J.U.L.I.E.  
JOINT UTILITY LOCATION INFORMATION FOR EXCAVATION  
1-800-892-0123  
OR 811

PROJECT ENGINEER: Christopher Maushard, 309-671-3453  
PROJECT MANAGER: George Elias, 309-671-3467  
CONTRACT NO. 68C09  
CATALOG NO. 035147-00D



GROSS LENGTH = NET LENGTH  
1520 FT. = 0.3 MILE (IL 71)  
4825 FT. = 0.91 MILE (IL 26)

HMA Milling & Resurfacing on IL 71, 0.2 MI. E. of Prairie Industrial Parkway to Approx. 400 Ft W. of Coffee Creek (SN 078-0032). NE of Hennepin & on Old IL 26 (CO RD 1050N) from just E. of IL. River to IL 26 (0.94 MI.) N. of Hennepin

STATE OF ILLINOIS  
DEPARTMENT OF TRANSPORTATION  
DIVISION OF HIGHWAYS

SUBMITTED Jan 8 20 15  
Harold A. Burnett  
DEPUTY DIRECTOR OF HIGHWAYS, REGION ENGINEER

Mar 20 20 15  
John D. Baranzelli, P.E.  
ENGINEER OF DESIGN AND ENVIRONMENT

Mar 20 20 15  
Omer Osman, P.E.  
DIRECTOR OF HIGHWAYS, CHIEF ENGINEER

PRINTED BY THE AUTHORITY  
OF THE STATE OF ILLINOIS

**COMMITMENTS**

Commitments are not to be altered without the written approval of all parties to which the commitment was made. No Commitment were made.

**PROPERTY OWNER ACCESS REQUIREMENTS**

Access must be maintained to all existing properties during construction per Article 107.09 unless arrangements are made in writing by the Contractor with the property owners with a copy to the Engineer for short-term closures.

**CONSECUTIVE SIDE STREET (ROAD) CLOSURE – PROHIBITED**

1. No two consecutive side streets (roads) may be closed at the same time during construction. The Contractor must alternate streets (roads).
2. Adjacent side roads will not be closed simultaneously. BLR Standard 21 shall be used for all local road closures without any entrances within the closed area. BLR Standard 22 can be used where it is necessary to allow local traffic access.

**ENVIRONMENTAL REVIEWS**

Prior to the use of any proposed borrow areas, use areas (temporary access roads, detours, run-arounds, etc.) and/or waste areas, the Contractor shall file the required environmental resource request surveys according to Section 107.22 of the Standard Specifications. These surveys are required in order for the Department to conduct cultural and biological resource surveys for the proposed site.

Prior to any waste materials being removed from the construction site the required environmental resource surveys will need to be obtained and filed by the Contractor. Excess waste products removed from the construction site shall be disposed of as required in Section 202.03 of the Standard Specifications.

Any protruding metal bars shall be removed prior to the disposal of broken concrete at approved disposal sites.

The required environmental resource documentation shall include the following:

- \* BDE Form 2289 (Environmental Survey Request)
- \* BDE Form 2290 (Waste/Use Area Review)
- \* A location map showing the size limits and location of the use area
- \* Color photographs depicting the use area
- \* Borrow Area Entry Agreement form-D4 PI0101

Please note that a minimum of four weeks shall be allowed for the District to obtain the required environmental clearances and six weeks for the required borrow site environmental clearances.

**PAVEMENT STATIONING NUMBERS & PLACEMENT**

The Contractor shall provide labor and materials required to imprint pavement station numbers in the finished surface of the pavement and/or overlay. The numbers shall be approximately 3/4 inch (20mm) wide, 5 inches (125 mm ) high and 5/8 inch (15 mm ) deep.

The pavement station numbers shall be installed as specified herein:

Interval – 200 feet (English stationing) or 100 meters (metric stationing)

Bottom of Numbers – 6 inches (150 mm ) from the inside edge of the pavement marking

Location:

- \* 2,3, & 5 Lane Pavements – right edge of pavement in direction of increasing stations
- \* Multi-Lane Divided Roadways – outside edge of pavement in both directions
- \* Ramps – along baseline edge of pavement

Position – stations shall be placed so they can be read from the adjacent shoulder

Format – English (Metric) pavement stations shall use this format "XXX (XX + X00)" where X represents the pavement station

This work will not be paid for separately, but will be considered included in the cost of the associated pavement and/or overlay pay items.

**HOT-MIX ASPHALT MIXTURE REQUIREMENTS**

Mixture Use(s):	Surface Course 1.5" for IL 71 & old IL 26
AC/PC:	PG 64-22
Design Air Voids:	4% N=50
Mixture Composition: (Gradation Mixture)	IL 9.5
Friction Aggregate	Mixture E
Quality Management Program	QC/QA

Notes: Individual lift thickness of each mix type will be no less than 3 times nominal maximum aggregate size and no more than 6 times nominal aggregate size.

FILE NAME : spring rd repair IL 118.26-71.1801 2014.dgn	USER NAME : subbrugge	DESIGNED - DRAWN -	REVISED - REVISED -	<b>STATE OF ILLINOIS DEPARTMENT OF TRANSPORTATION</b>	<b>GENERAL NOTES</b>	F.A.P.	SECTION	COUNTY	TOTAL SHEETS	SHEET NO.
PLOT SCALE : 100.0000 1" = 100'	CHECKED -	REVISED -	619			112011,RS-2;178-1;1,RS-2	PUTNAM	16	2	
PLOT DATE : 1/23/2015	DATE -	REVISED -	RTE.			IL 71 & IL 26	CONTRACT NO. 68C09		[ILLINOIS] FED. AID PROJECT	
Default						SCALE: _____ SHEET _____ OF _____ SHEETS STA. _____ TO STA. _____				

**BUTT JOINT CUTTING TIME RESTRICTION**

Butt joints shall not be milled more than three (3) days prior to placement of the HMA surface course.

**PAVING SURFACE COURSE**

Continuous paving operations on the main roadway shall be maintained at all times during the construction of the hot-mix asphalt surface. No interruptions for side roads, entrances, turn lanes, etc. will be allowed.

**NO PASSING ZONE VERIFICATION**

The resident shall contact Operations to verify the location of no passing zones prior to placement of centerline striping.

**SPECIFIC NOTE :**

The Contractor with the Resident Engineer shall get permission from Springfield for MTD to cross over (SN 078-0032)

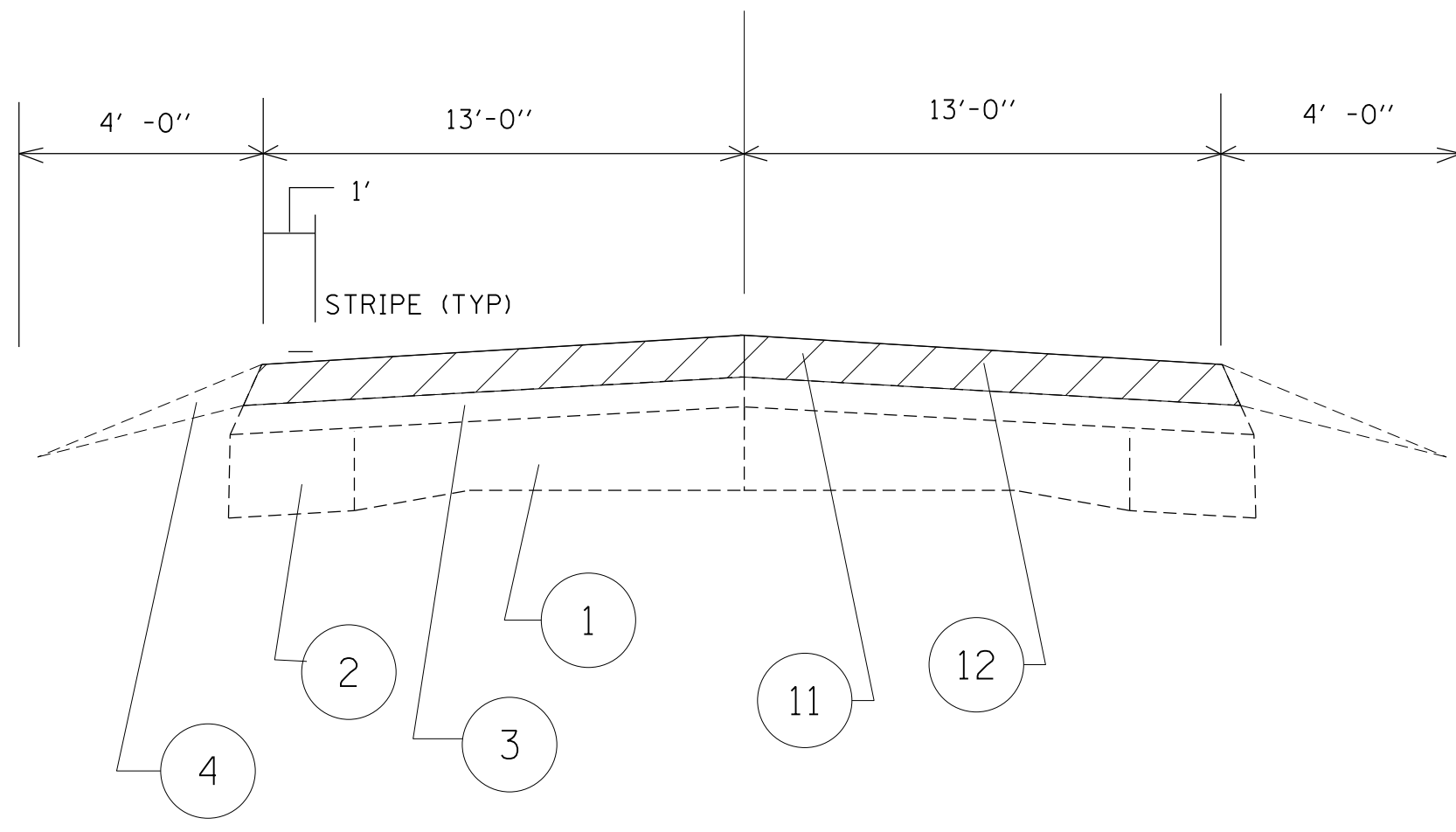
FILE NAME : spring - rd repair IL (10,20-71,100) 2014.dgn	USER NAME : eubreygg	DESIGNED - _____	REVISED - _____	<b>STATE OF ILLINOIS DEPARTMENT OF TRANSPORTATION</b>	<b>GENERAL NOTES</b>	F.A.P.	SECTION	COUNTY	TOTAL SHEETS	SHEET NO.	
		DRAWN - _____	REVISED - _____			619	(120),RS-2;(TB-1);RS-2	PUTNAM	16	3	
		CHECKED - _____	REVISED - _____			RTS.	IL 71 & IL 26	CONTRACT NO. 68C09			
		DATE - _____	REVISED - _____			ILLINOIS FED. AID PROJECT					
Default	PLOT SCALE : 100.0000' / 1"			SCALE: _____	SHEET _____ OF _____ SHEETS	STA. _____ TO STA. _____					

CODE NO.	ITEM	UNIT	TOTAL QUANTITY	CONSTRUCTION CODE	
				0005	0005
				IL 71	OLD IL 26
				PUTNAM	PUTNAM
				100 % STATE	100 % STATE
40600285	POLYMERIZED BITUMINOUS MATERIALS (PRIME COAT)	POUND	19326	3466	15860
40600982	HOT - MIX ASPHALT SURFACE REMOVAL - BUTT JOINT	SO YD	347	173	174
40600990	TEMPORARY RAMP	SO YD	58	29	29
40603560	POLYMERIZED HOT - MIX ASPHALT SURFACE COURSE, MIX "E", N50	TON	1534	364	1170
44000155	HOT - MIX ASPHALT SURFACE REMOVAL, 1 1/2"	SO YD	24158	4334	19824
48203100	HOT - MIX ASPHALT SHOULDERS	TON	496		496
67100100	MOBILIZATION	L SUM	1	0.5	0.5
70100460	TRAFFIC CONTROL AND PROTECTION, STANDARD 701306	L SUM	1	0.5	0.5
70300220	TEMPORARY PAVEMENT MARKING - LINE 4"	FOOT	14220	3375	10845
* 78001110	PAINT PAVEMENT MARKING - LINE 4"	FOOT	14220	3375	10845
* 78100100	RAISED REFLECTIVE PAVEMENT MARKER	EACH	20	20	
78300200	RAISED REFLECTIVE PAVEMENT MARKER REMOVAL	EACH	20	20	
Z0034105	MATERIAL TRANSFER DEVICE	TON	1534	364	1170

13

**\* SPECIALTY ITEMS**

FILE NAME : spring rd repair IL (18.26-71.180) 2014.dgn	USER NAME : subreggs	DESIGNED -	REVISED -	<b>STATE OF ILLINOIS DEPARTMENT OF TRANSPORTATION</b>	<b>SUMMARY OF QUANTITIES</b>	F.A.P.	SECTION	COUNTY	TOTAL SHEETS	SHEET NO.	
		DRAWN -	REVISED -			619	(120)RS-24T8-D1-1,RS-2	PUTNAM	16	4	
		CHECKED -	REVISED -			RTE. IL 71 & IL 26 CONTRACT NO. 68C09					
		DATE -	REVISED -			<small>ILLINOIS FED. AID PROJECT</small>					

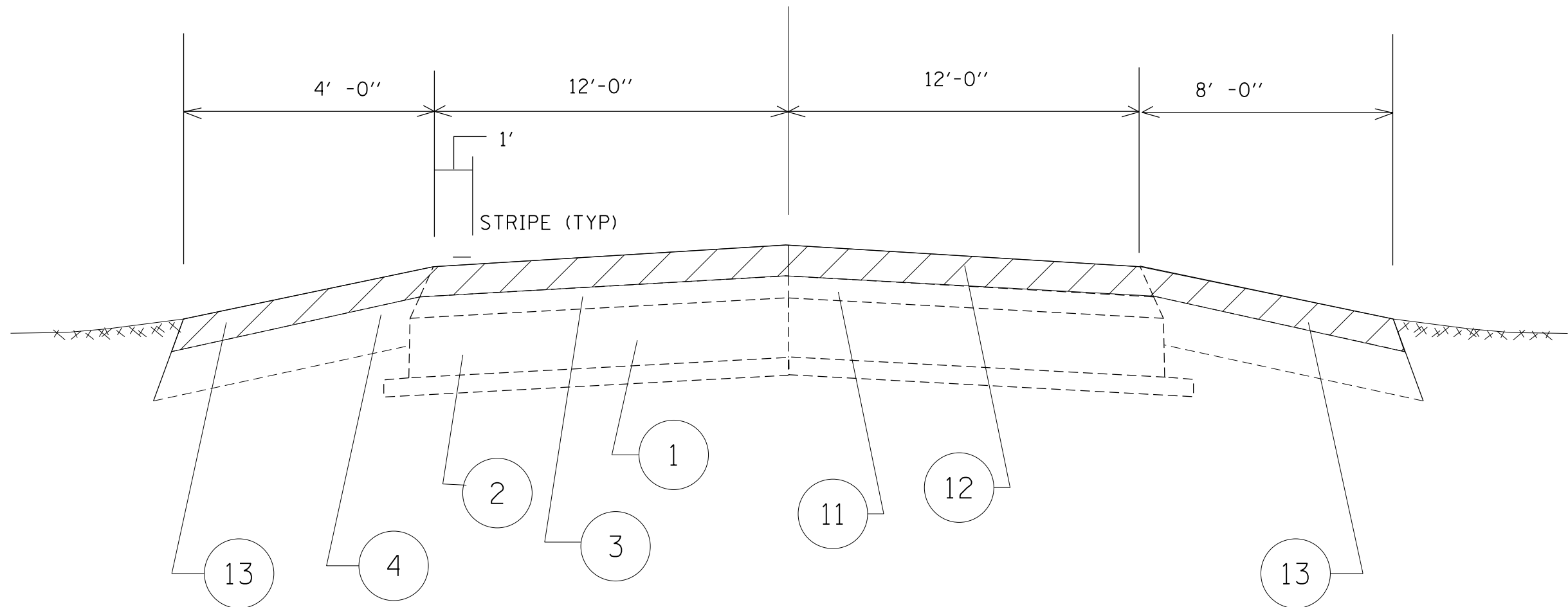


OLD IL 26

STA 40+00 TO STA 52+35

- ① EXIST PAVEMENT
- ② EXIST WIDENING
- ③ EXIST OVERLAY
- ④ EXIST AGG SHOULDERS

- ⑪ PROP HOT MIX ASPHALT SURF REM 1 1/2"
- ⑫ PROP HOT MIX ASPHALT SURF CSE (1 1/2")



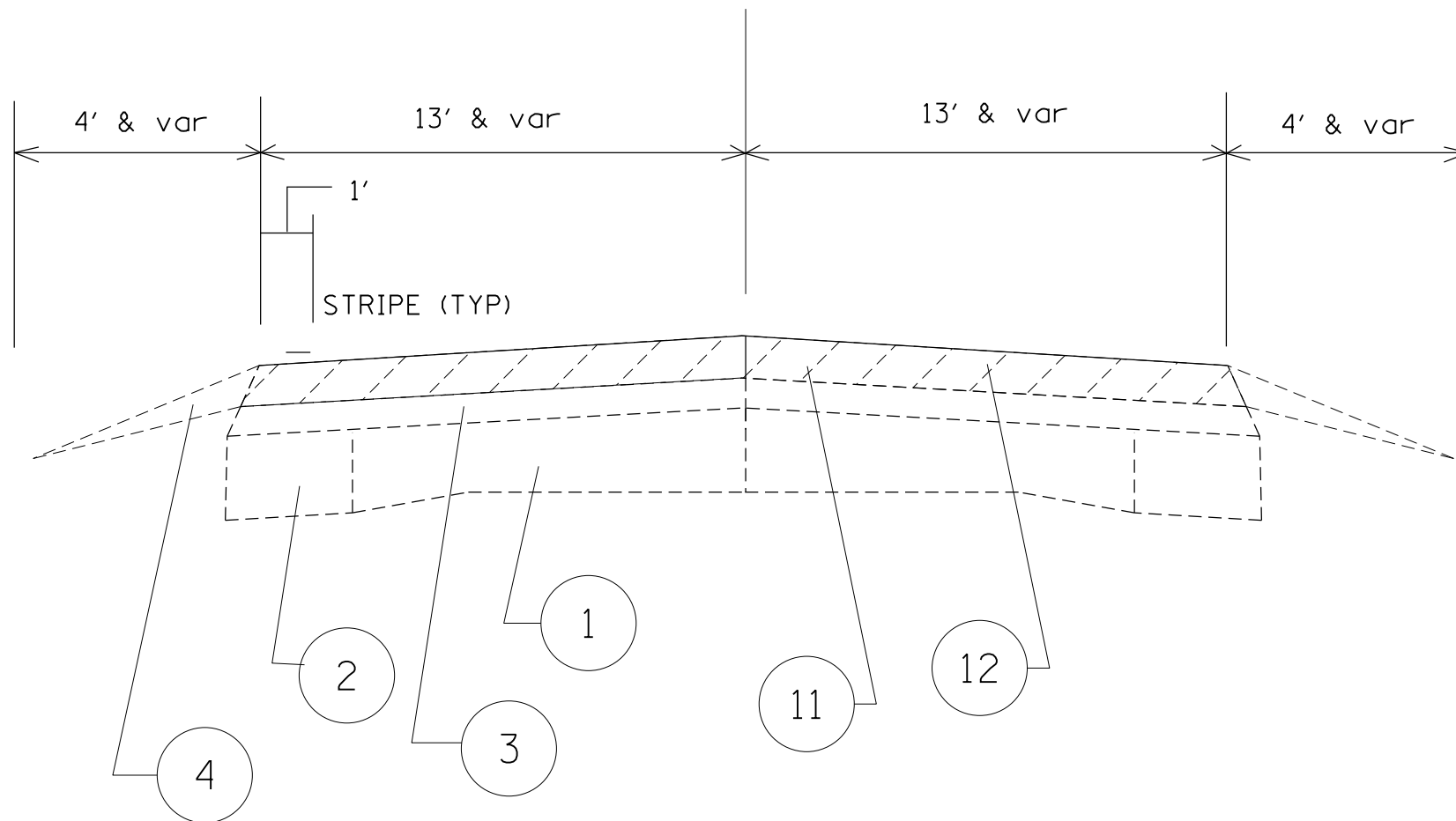
OLD IL 26

STA 52+35 TO STA 79+68

- 1 EXIST PAVEMENT
- 2 EXIST WIDENING
- 3 EXIST OVERLAY
- 4 EXIST BIT SHOULDERS

- 11 PROP HOT MIX ASPHALT SURF REM 1 1/2"
- 12 PROP HOT MIX ASPHALT SURF CSE (1 1/2")
- 13 PROP HMA SHOULDERS (1 1/2")

FILE NAME = spring rd repair IL (18,26-71,180) 2014.dgn	USER NAME = aubreys	DESIGNED - _____	REVISED - _____	<b>STATE OF ILLINOIS DEPARTMENT OF TRANSPORTATION</b>	<b>TYPICAL SECTION</b>	F.A.P	SECTION	COUNTY	TOTAL SHEETS	SHEET NO.
Default	PLOT SCALE = 100.0000' / in.	DRAWN - _____	REVISED - _____			619	(120)RS-2;(78-1)I-1,RS-2	PUTNAM	16	6
	PLOT DATE = 1/8/2015	CHECKED - _____	REVISED - _____			RTE.	IL 71 & IL 26	CONTRACT NO. 68C09		
		DATE - _____	REVISED - _____			SCALE: _____ SHEET _____ OF _____ SHEETS STA. _____ TO STA. _____		ILLINOIS FED. AID PROJECT		

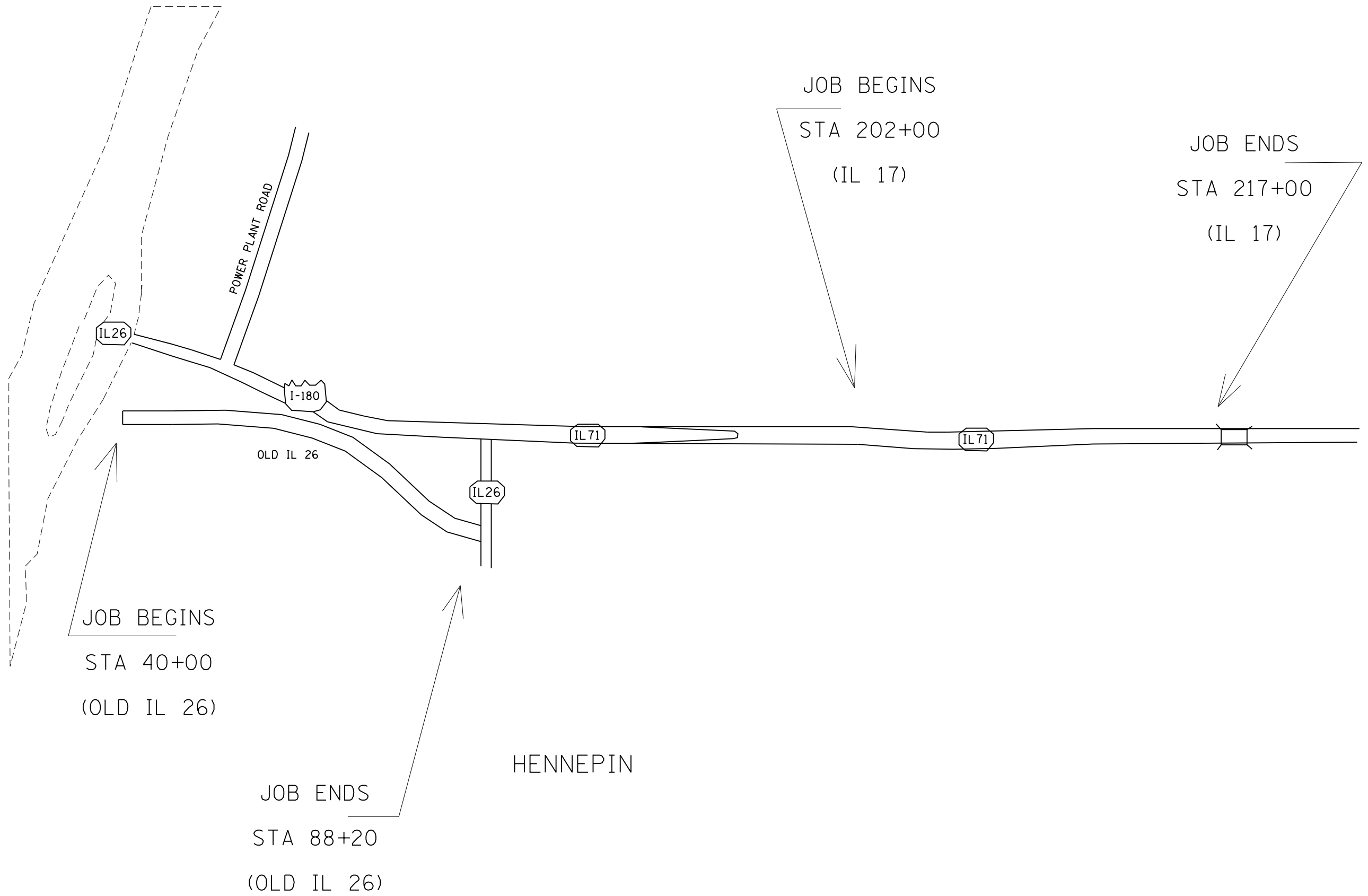


IL 71 TYPICAL SECTION

- 1 EXIST PAVEMENT
- 2 EXIST WIDENING
- 3 EXIST OVERLAY
- 4 EXIST AGG SHOULDERS

- 11 PROP HOT MIX ASPHALT SURF REM 1 1/2"
- 12 PROP HOT MIX ASPHALT SURF CSE (1 1/2")

FILE NAME = spring rd repair IL (18,26-71,180) 2014.dgn	USER NAME = aubreys	DESIGNED - _____	REVISED - _____	<b>STATE OF ILLINOIS DEPARTMENT OF TRANSPORTATION</b>	<b>TYPICAL SECTION</b>		F.A.P.	SECTION	COUNTY	TOTAL SHEETS	SHEET NO.	
Default	PLOT SCALE = 100.0000' / in.	DRAWN - _____	REVISED - _____		SCALE: _____	SHEET _____ OF _____ SHEETS	STA. _____ TO STA. _____	619	(120)I,RS-2;(78-1)I-1,RS-2	PUTNAM	16	7
	PLOT DATE = 1/8/2015	CHECKED - _____	REVISED - _____					RTE.	IL 71 & IL 26			
		DATE - _____	REVISED - _____									CONTRACT NO. 68C09



FILE NAME = spring rd repair IL (18,26-71,180) 2014.dgn	USER NAME = aubreygs	DESIGNED - _____	REVISED - _____
Default	PLOT SCALE = 100.0000' / in.	DRAWN - _____	REVISED - _____
	PLOT DATE = 1/8/2015	CHECKED - _____	REVISED - _____
		DATE - _____	REVISED - _____

**STATE OF ILLINOIS  
DEPARTMENT OF TRANSPORTATION**

**LINE DIAGRAM**

SCALE: \_\_\_\_\_ SHEET \_\_\_\_ OF \_\_\_\_ SHEETS STA. \_\_\_\_\_ TO STA. \_\_\_\_\_

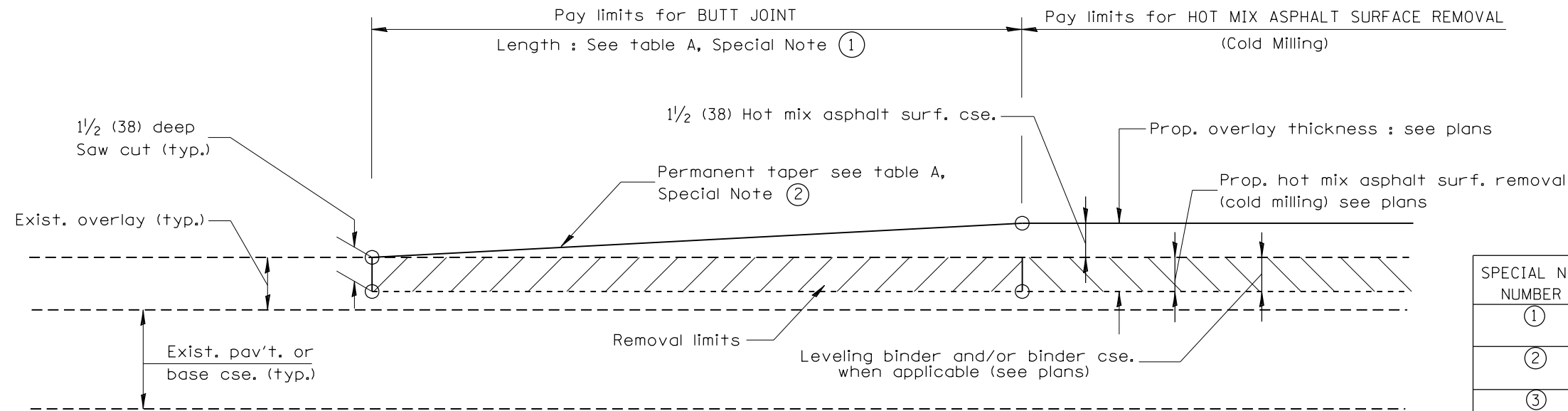
F.A.P.	SECTION	COUNTY	TOTAL SHEETS	SHEET NO.
619	(120)I,RS-2;(78-1)I-1,RS-2	PUTNAM	16	8
RTE.	IL 71 & IL 26	CONTRACT NO. 68C09		
ILLINOIS FED. AID PROJECT				



LOCATION		LENGTH	WIDTH	AREA	HMA SHOULDERS (1 1/2")	POLYMERIZED BIT MAT (PR CT)	POLYMERIZED SURF CSE MIX D N50 (1 1/2")	HMA SURFACE REM 1 1/2"	TRANSFER DEVICE	LOCATION	RAISED REFL PAVT MARKER	RAISED REFL PAVT MARKER REM					
STATION	TO	STATION	FT	FT	SQ YD	TON	POUND	TON	SQ YD	TON	STATION	TO	STATION	EACH	EACH		
<b>OLD IL 26</b>										<b>OLD IL 26</b>							
40+00	TO	58+70	1,870	26	5,402		4,322	454	5,402	454	40+00	TO	58+70	0	0		
58+70	TO	88+20	2,950	26	8,522	496	11,538	716	14,422	716	58+70	TO	88+20				
<b>IL 71</b>										<b>IL 71</b>							
202+00	TO	217+00	1,500	26	4,333		3,466	364	4,333	364	202+00	TO	217+00	20	20		
<b>TOTAL</b>						<b>496</b>	<b>19,326</b>	<b>1,534</b>	<b>24,158</b>	<b>1,534</b>	<b>TOTAL</b>					20	20

LOCATION		BIT SURF REMOVAL BUTT-JOINT	TEMP RAMPS	LOCATION	TEMPORARY PAVT MARKING LINE- 4"	PAINT PAVT MARKING LINE- 4"	CONTRACT	68C09				
STATION	TO	STATION	SQ YD	SQ YD	STATION	TO	STATION	SQ YD	SQ YD	TRAFFIC CONTROL AND PROTECTION STANDARD 70130	L SUM	
<b>OLD IL 26</b>										<b>JOBSITE</b>		1
40+00			86.67	14.44	40+00	TO	88+20	10845	10845	<b>TOTAL</b>		1
88+20			86.67	14.44						MOBILIZATION		L SUM
<b>IL 71</b>										<b>JOBSITE</b>		1
202+00			86.67	14.44	202+00	TO	217+00	3375	3375	<b>TOTAL</b>		1
217+00			86.67	14.44						S/GEN/EXEL/ST.PLAN/SQ5/68C09		
<b>TOTAL</b>			<b>347</b>	<b>58</b>	<b>TOTAL</b>			<b>14,220</b>	<b>14,220</b>			

DESIGNER NOTES:  
 1. Include District Special Provision for Butt Joints & for Hot Mix Asphalt Removal (Cold Milling).  
 2. The butt joints pay item includes the saw cut & temporary ramp. Payment for the Butt Joint applies whether or not the project features Hot Mix Asphalt Removal (Cold Milling).



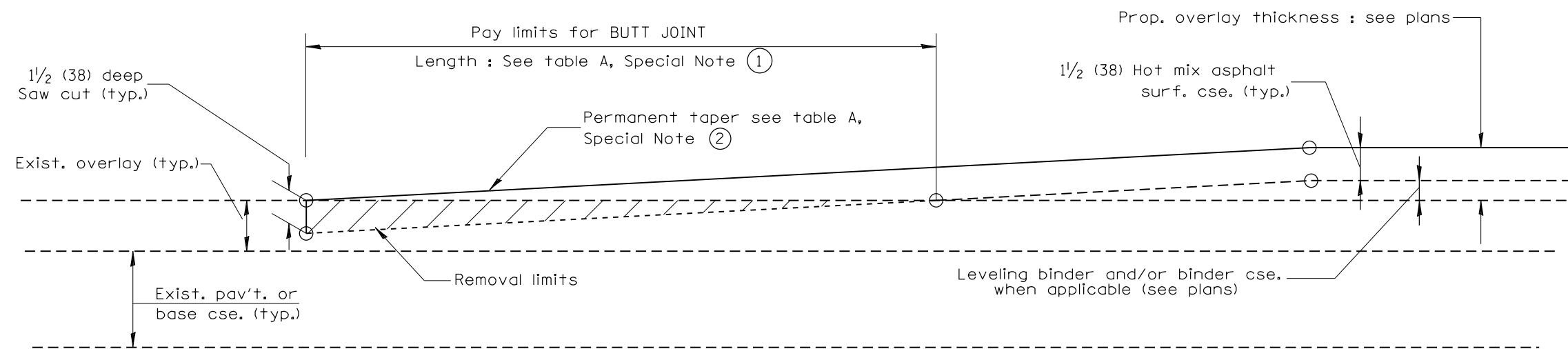
**CASE 1 : WITH HOT MIX ASPHALT SURFACE REMOVAL (COLD MILLING)**

**TABLE A**  
(LENGTHS AND TAPER RATES)

SPECIAL NOTE NUMBER	ELEMENT	MAINLINE INTERSTATES & 4-LANE EXPRESSWAYS	ALL OTHERS
①	LENGTH OF BUTT JOINT	60'(18.0 m)	30'(9.0 m)
②	PERMANENT TAPER RATE	1:480	1:240
③	TEMPORARY RAMP TAPER RATE	1:80	1:40
④	TEMPORARY RAMP LENGTH	10'(3.0 m)	5'(1.5 m)
⑤	LENGTH OF BUTT JOINT	10'(3.0 m)	10'(3.0 m)

**GENERAL NOTES**

- The work shall be done in accordance with Article 406.08 and the Special Provision for Butt Joints.
- The pavement surface to be removed may be either bituminous or P.C. concrete. The work shall be performed in accordance with Article 440.04 and the Special Provisions for Butt Joints.
- The saw cut joints shall be primed just prior to the placing of bituminous material. The work will be in accordance with the applicable portions of Article 406.05.



**CASE 2 : NO HOT MIX ASPHALT SURFACE REMOVAL (COLD MILLING)**

All dimensions are in inches (millimeters) unless otherwise noted.

01-01-97	BENUM. C-23.01. NEW REVISION BOX.	J.P.
04-01-97	COBREGION TO DEPTH	J.A.
09-15-05	REVISED DESIGNER NOTE	M.M.A.
10-16-06	REVISED TO 2007 SPEC.	M.A.

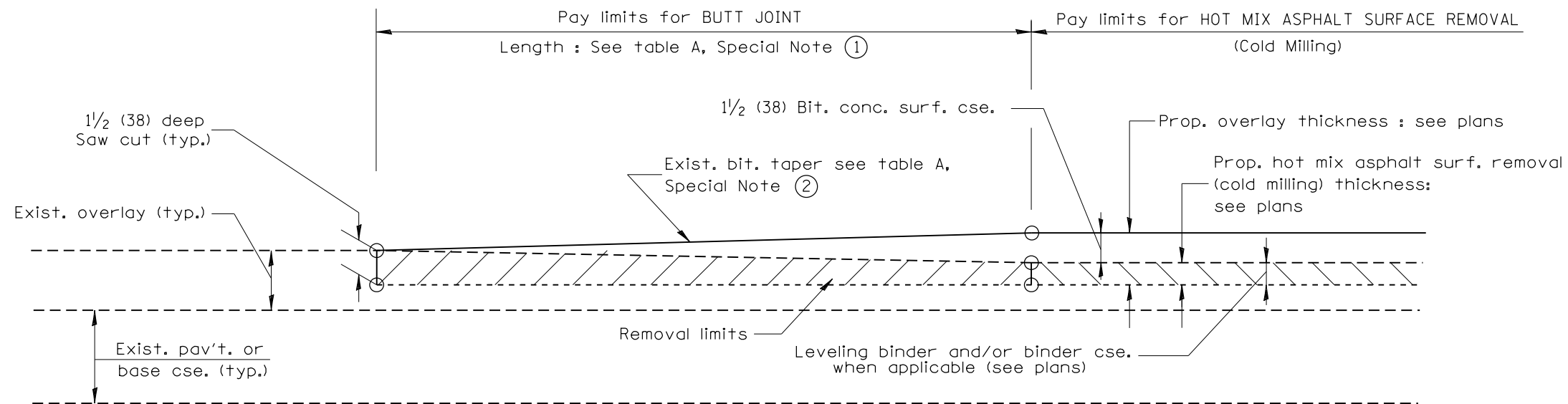
**STATE OF ILLINOIS**  
**DEPARTMENT OF TRANSPORTATION**

**BUTT JOINTS**

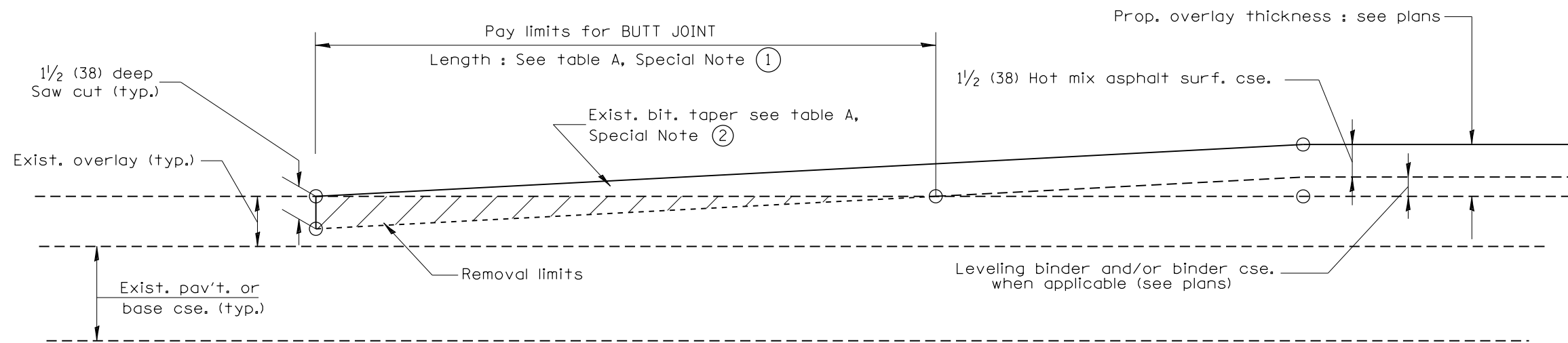
NOT TO SCALE

SHI. J. 0E. 3  
CADD SID. 406101:04

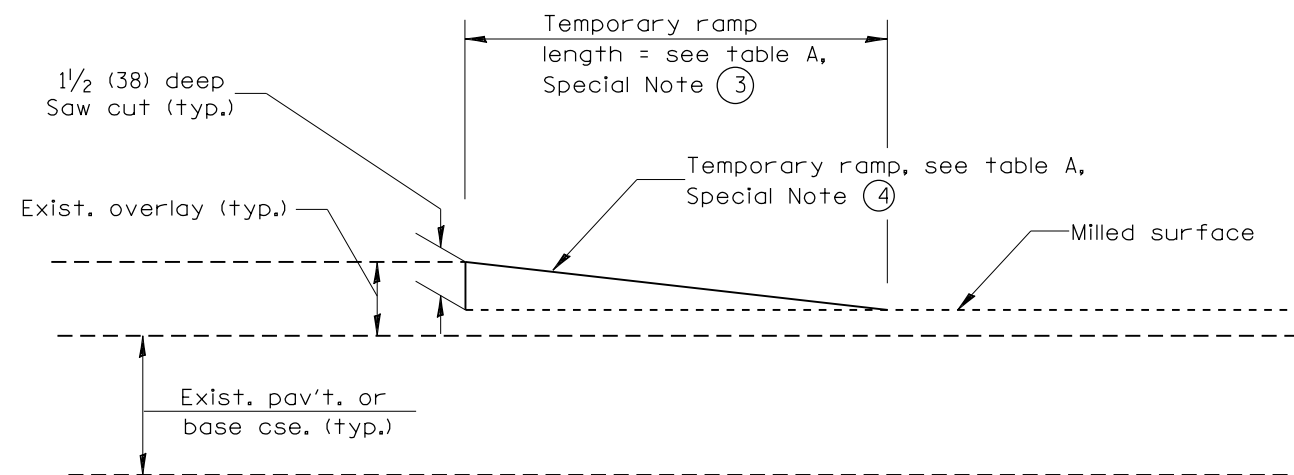
F.A.P.	SECTION	COUNTY	TOTAL SHEETS	SHEET NO.
619	(120)RS-2;(78-1)I-1,RS-2	PUTNAM	16	10
RTE. IL 71 & IL 26		CONTRACT NO. 68C09		
FED. ROAD DIST. NO. - [ILLINOIS] FED. AID PROJECT				



**CASE 3 : WITH HOT MIX ASPHALT SURFACE REMOVAL (COLD MILLING)**  
**TIE-IN TO EXISTING BITUMINOUS TAPER**



**CASE 4 : NO HOT MIX ASPHALT SURFACE REMOVAL (COLD MILLING)**  
**TIE-IN TO EXISTING BITUMINOUS TAPER**



**DETAIL TEMPORARY RAMP**

All dimensions are in inches (millimeters) unless otherwise noted.

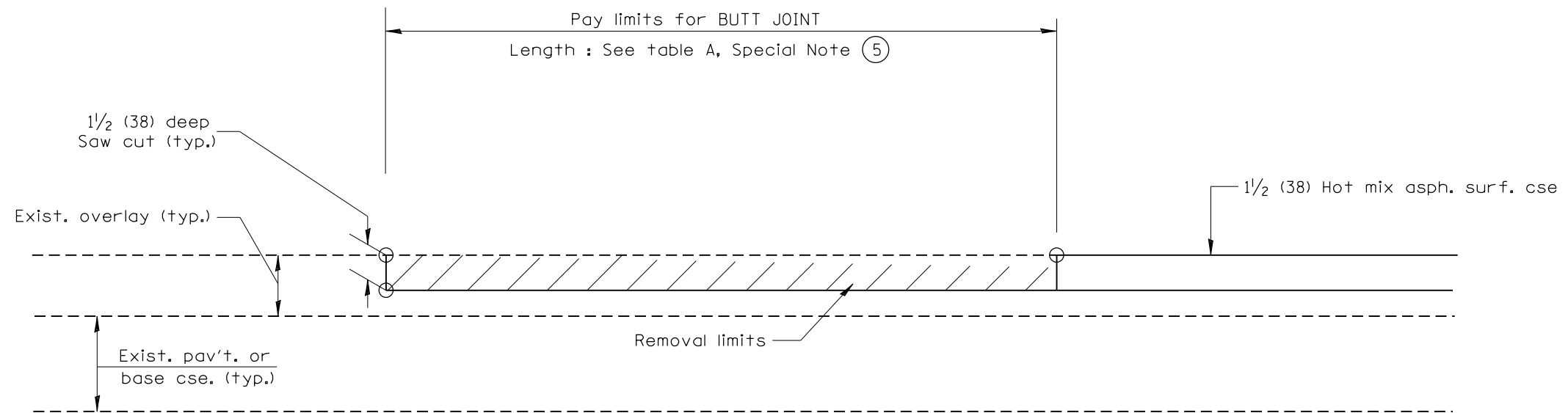

STATE OF ILLINOIS  
DEPARTMENT OF TRANSPORTATION

BUTT JOINTS

NOT TO SCALE

SHI\_2\_0E\_3  
CADD SID\_406101:04

F.A.P	SECTION	COUNTY	TOTAL SHEETS	SHEET NO.
619	(120)RS-2;(78-1)I-1,RS-2	PUTNAM	16	11
RTE. IL 71 & IL 26			CONTRACT NO. 68C09	
FED. ROAD DIST. NO. - [ILLINOIS] FED. AID PROJECT				



CASE 5 : WITH HOT MIX ASPHALT SURFACE REMOVAL (COLD MILLING)  
TIE-IN TO EXISTING BITUMINOUS TAPER

All dimensions are in inches (millimeters) unless otherwise noted.

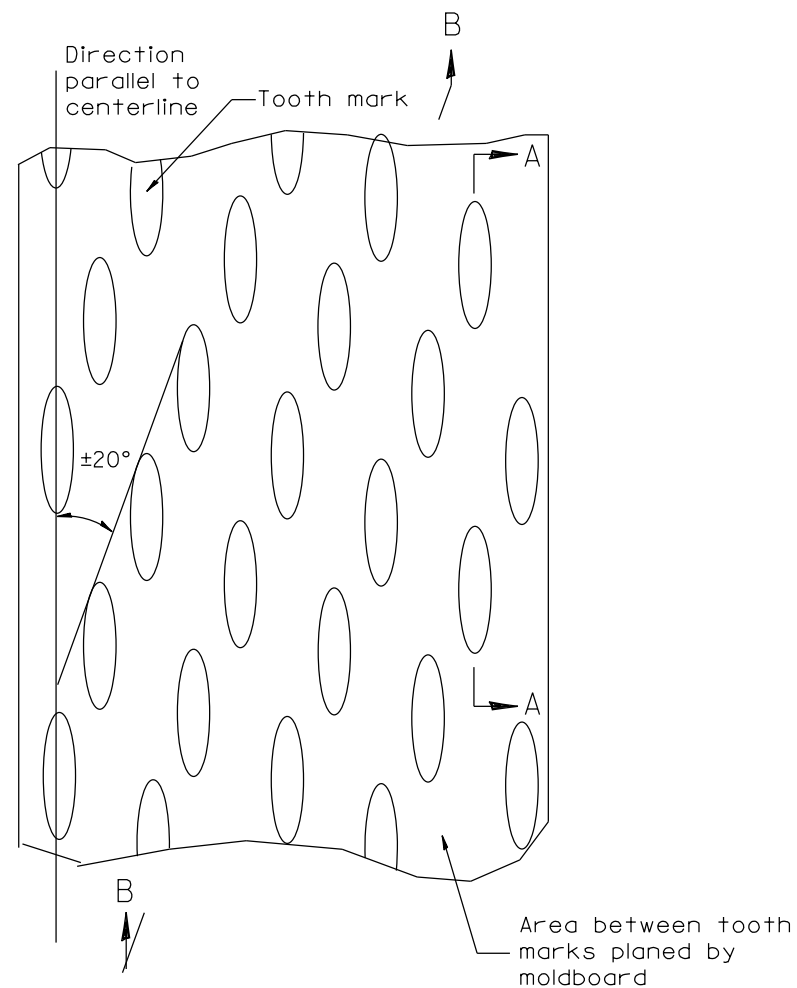

STATE OF ILLINOIS  
DEPARTMENT OF TRANSPORTATION

NOT TO SCALE

BUTT JOINTS

SHI\_3\_0E\_3  
CADD SID\_406101:04

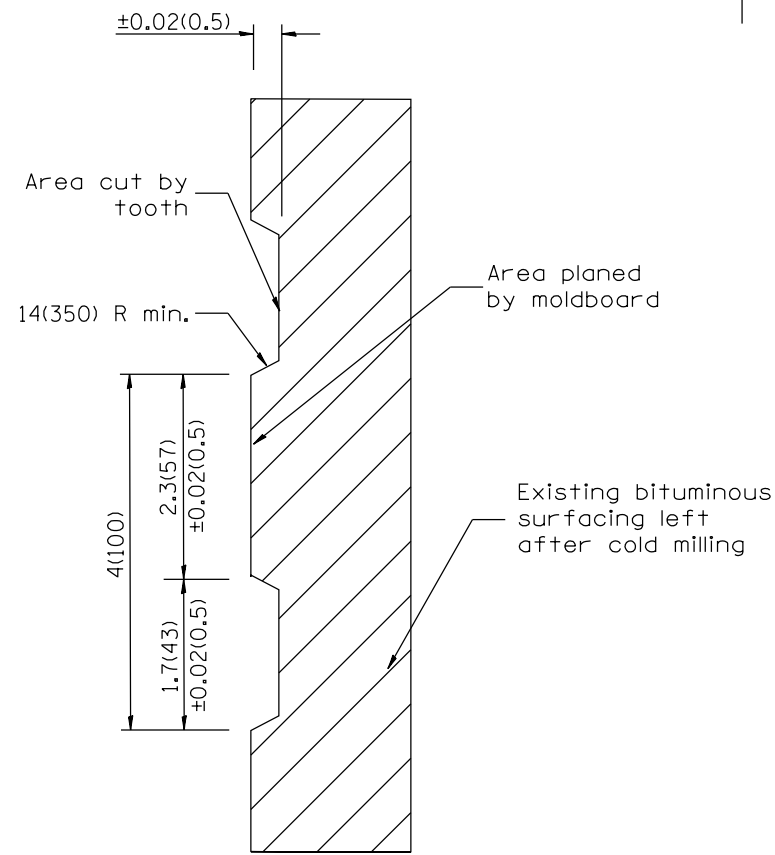
F.A.P	SECTION	COUNTY	TOTAL SHEETS	SHEET NO.
619	(120)RS-2;(78-1)I-1,RS-2	PUTNAM	16	12
RTE. IL 71 & IL 26		CONTRACT NO. 68C09		
FED. ROAD DIST. NO. - ILLINOIS FED. AID PROJECT				



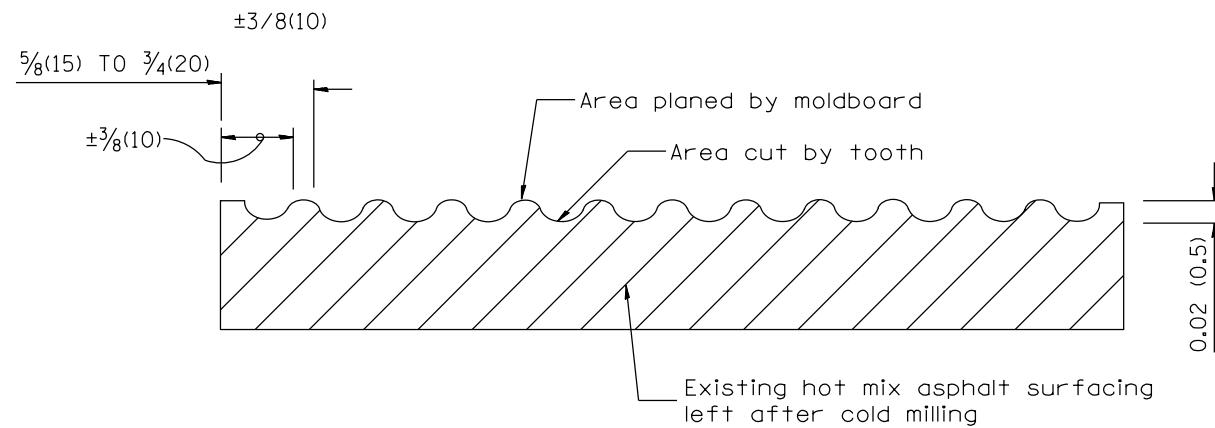
PLAN

General notes:

1. Coldmilling shall consist of two processes: Cutting with carbide teeth mounted on a rotating drum, and planing with a moldboard mounted immediately behind the cutting drum.
2. Other similar patterns will be acceptable if they consist of a smooth, flat, planed surface interspersed with a pattern of discontinuous longitudinal striations.



SECTION A-A



SECTION B-B PROJECTED  
PERPENDICULAR TO CENTERLINE

DESIGNER NOTES:  
1. INCLUDE DISTRICT SPECIAL PROVISION, IF APPLICABLE.

All dimensions are in inches (millimeters) unless otherwise noted.

01-01-97	BENUM_C=104.01_NEW_REVISION_BOX	J.P.
04-20-98	REMOVED_MILLING_DETAIL_EBOM_STANDARD	J.A.
09-08-98	COBBECI_NOIE_LEADER_PLACEMENT	B.W.
10-16-06	REVISED_TO_2007_SPEC.	M.A.

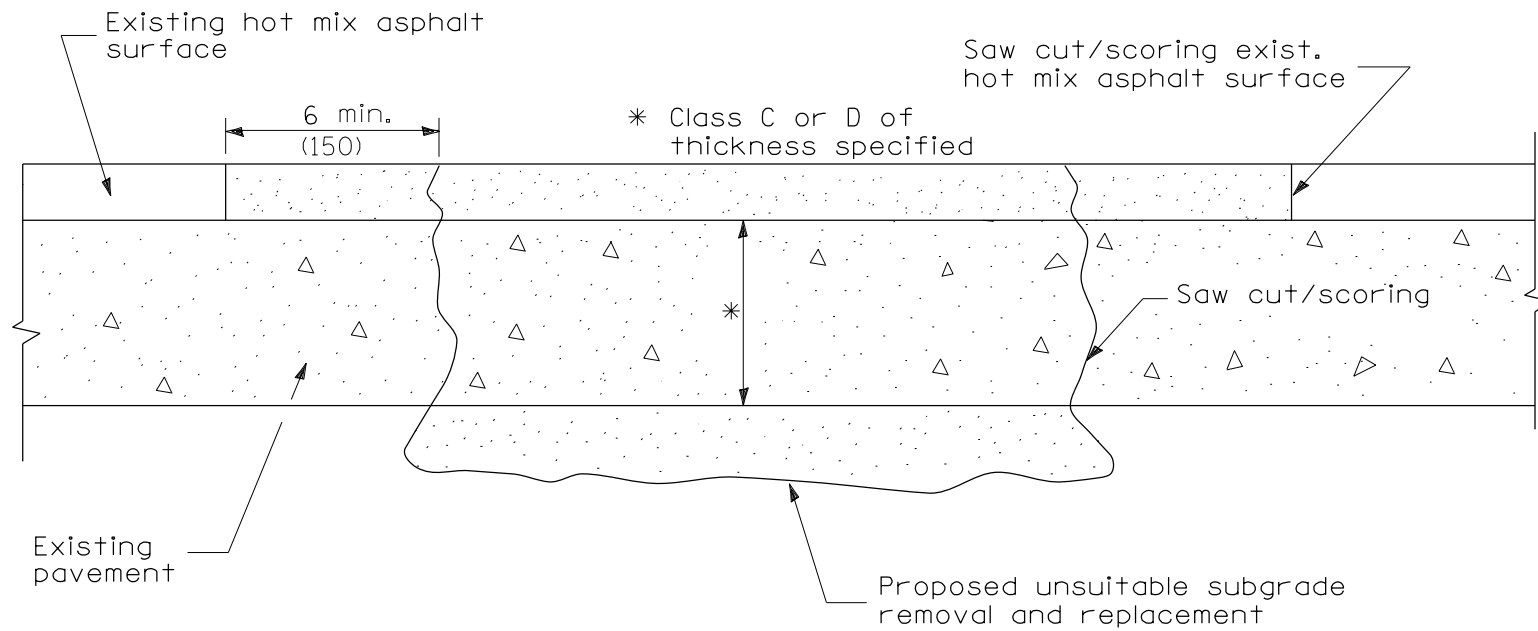
STATE OF ILLINOIS  
DEPARTMENT OF TRANSPORTATION

HOT MIX ASPHALT SURFACE REMOVAL (COLD MILLING)

NOT TO SCALE

CADD\_SID\_440001:04

F.A.P	SECTION	COUNTY	TOTAL SHEETS	SHEET NO.
619	(120)RS-2;(78-1)I-1,RS-2	PUTNAM	16	13
RTE. IL 71 & IL 26		CONTRACT NO. 68C09		
FED. ROAD DIST. NO. - ILLINOIS FED. AID PROJECT				



SEQUENCE OF CONSTRUCTION

1. Remove the existing hot mix asphalt surface.
2. Remove and replace full depth patches.
3. Replace hot mix asphalt surface.

PAVEMENT PATCHING FOR  
HOT MIX ASPHALT SURFACED PAVEMENT

GENERAL NOTES

1. The width of the full depth patch over a trench shall be 12 (300) wider on each side of the trench.

All dimensions are in inches (millimeters) unless otherwise noted.

01-01-97	BENUM_C:104.03_NEW_REVISION_BOX_REVISID_NOIES	-I.P.-			
09-15-05	REVISED_DESIGNER_NOIE	M.M.A.			
10-16-06	REVISED_IO_2007_SPEC.	M.A.			

**STATE OF ILLINOIS  
DEPARTMENT OF TRANSPORTATION**

**HOT MIX ASPHALT SURFACE REMOVAL OVER PATCHES**

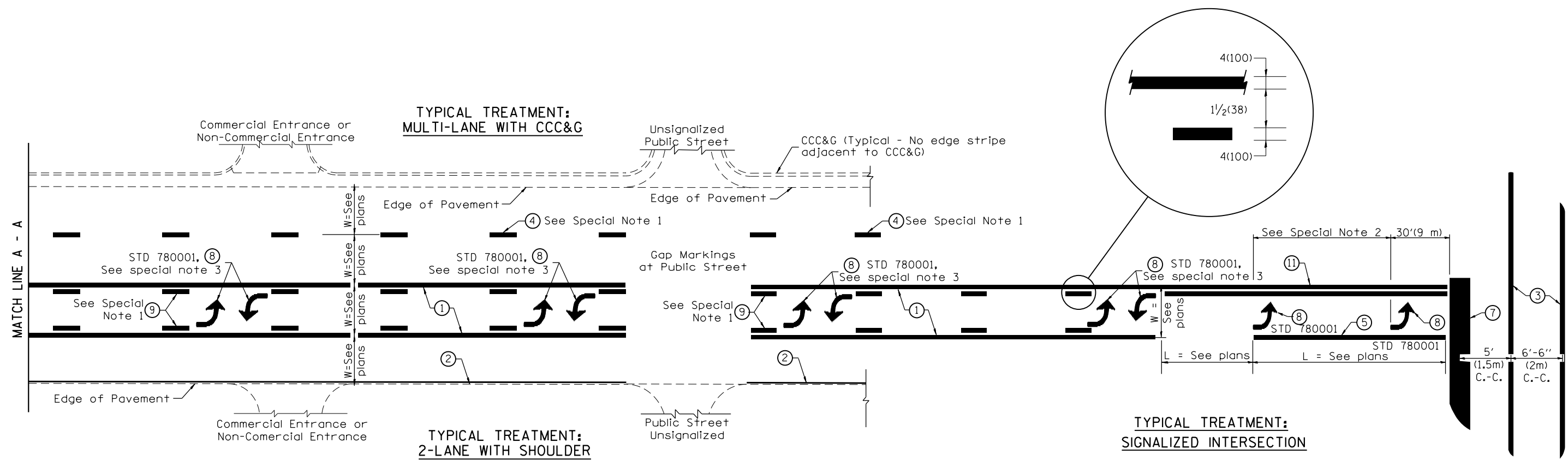
NOT TO SCALE

CADD SID. 440101:04

F.A.P	SECTION	COUNTY	TOTAL SHEETS	SHEET NO.
619	(120)RS-2;(78-1)I-1,RS-2	PUTNAM	16	14
RTE. IL 71 & IL 26		CONTRACT NO. 68C09		
FED. ROAD DIST. NO. - [ILLINOIS] FED. AID PROJECT				

DESIGNER NOTES:

1. Include State Standard 780001 (Typical Pavement Markings)



**FLUSH PAVED MEDIAN: TWO-WAY LEFT TURN LANE WITH ONE-WAY LEFT TURN LANE AT SIGNALIZED INTERSECTION**

**TYPICAL PAVEMENT MARKING LEGEND**  
(Note: This is a District Standard Legend. Some elements may not apply to specific project.)

- ① 4(100) Solid (Yellow)
- ② 4(100) Solid (White)
- ③ 2-6(150) Crosswalk @ 6'-6" (2m)min C.-C. (White)  
2-8(200) Crosswalk @ 6'-6" (2m)min C.-C. (White) (When traffic signals are present.)
- ④ 6(150) Skip-Dash (White) (See Special Note 1)
- ⑤ 8(200) Solid (White)
- ⑥ 12(300) Diagonal (White) (Item ⑥ is shown on Std. 780001)
- ⑦ 24(600) Stop Bar (White)
- ⑧ Letters & Arrows (See Std. 780001 and Special Notes 2 & 3)
- ⑨ 4(100) Skip-Dash (Yellow) (See Special Note 1)
- ⑩ 12(300) Diagonal (Yellow) (See Table A)
- ⑪ 4(100) Double Solid (Yellow) (See Table A)

**SPECIAL NOTES**

1. Skip-Dash markings will be centered between both ends of city blocks and shall be placed in alignment transversely across the pavement.
2. The following shall apply to arrows located in one-way left turn lanes:
  - A. A minimum of two (2) arrows is required.
  - B. The maximum spacing between arrows is 80' (24 m).
  - C. Arrows shall be evenly spaced if three (3) or more are required.
3. The following shall apply to arrow pairs located in two-way left turn lanes:
  - A. A minimum of two (2) arrow pairs is required.
  - B. The maximum spacing between arrow pairs is 200' (61 m).
  - C. Arrow pairs shall be evenly spaced if three (3) or more are required.
  - D. The spacing between Bi Directional Left Turn Arrows is 33' (10 m).

**GENERAL NOTES**

1. Refer to State Standard 780001 for additional Pavement Markings including letters & arrows.
2. See Plans for Pavement Markings adjacent to curbed islands and medians, and through lane reductions.

01-01-97	BENUM, E-B.03, NEW REVISION BOX	J.P.	10-16-06	REVISED TO 2007 SPEC.	
02-07-97	ADD BI DIRECTIONAL DIMENSION	J.A.			
10-97	COBBECT BI DIRECTIONAL DIMENSION	J.A.			
08-02	ADD CROSSWALK DIMS. WITH T.S.	M.A.			

**STATE OF ILLINOIS**  
**DEPARTMENT OF TRANSPORTATION**

**TYPICAL PAVEMENT MARKINGS**

SHI\_I\_0E\_2  
CADD\_SIQ\_780001-04

F.A.P.	SECTION	COUNTY	TOTAL SHEETS	SHEET NO.
619	(120)I,RS-2;(78-1)I-1,RS-2	PUTNAM	16	15
RTE. IL 71 & IL 26		CONTRACT NO. 68C09		
FED. ROAD DIST. NO. ILLINOIS FED. AID PROJECT				

NOT TO SCALE

