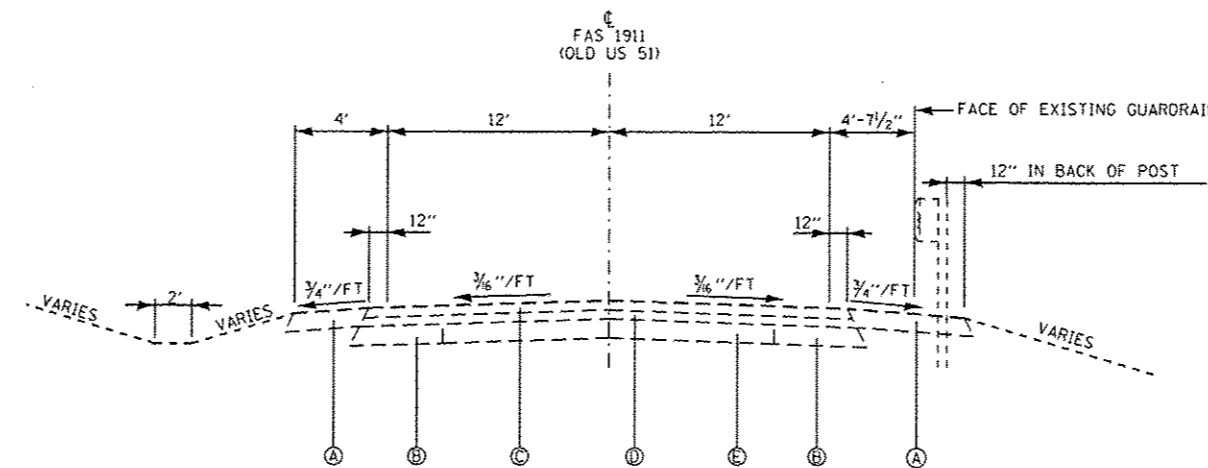


EXISTING

- Ⓐ AGGREGATE SHOULDERS TYPE A, 6"
- Ⓑ BASE COURSE WIDENING, 9"
- Ⓒ BIT. CONC. SURFACE COURSE MIX. D, CLASS I, 1-1/2"
- Ⓓ BIT. CONC. BINDER COURSE, 1-1/2" MIN.
- Ⓔ CONCRETE PAVEMENT



**① EXISTING TYPICAL SECTION
FAS 1911 (OLD U.S. ROUTE 51)**

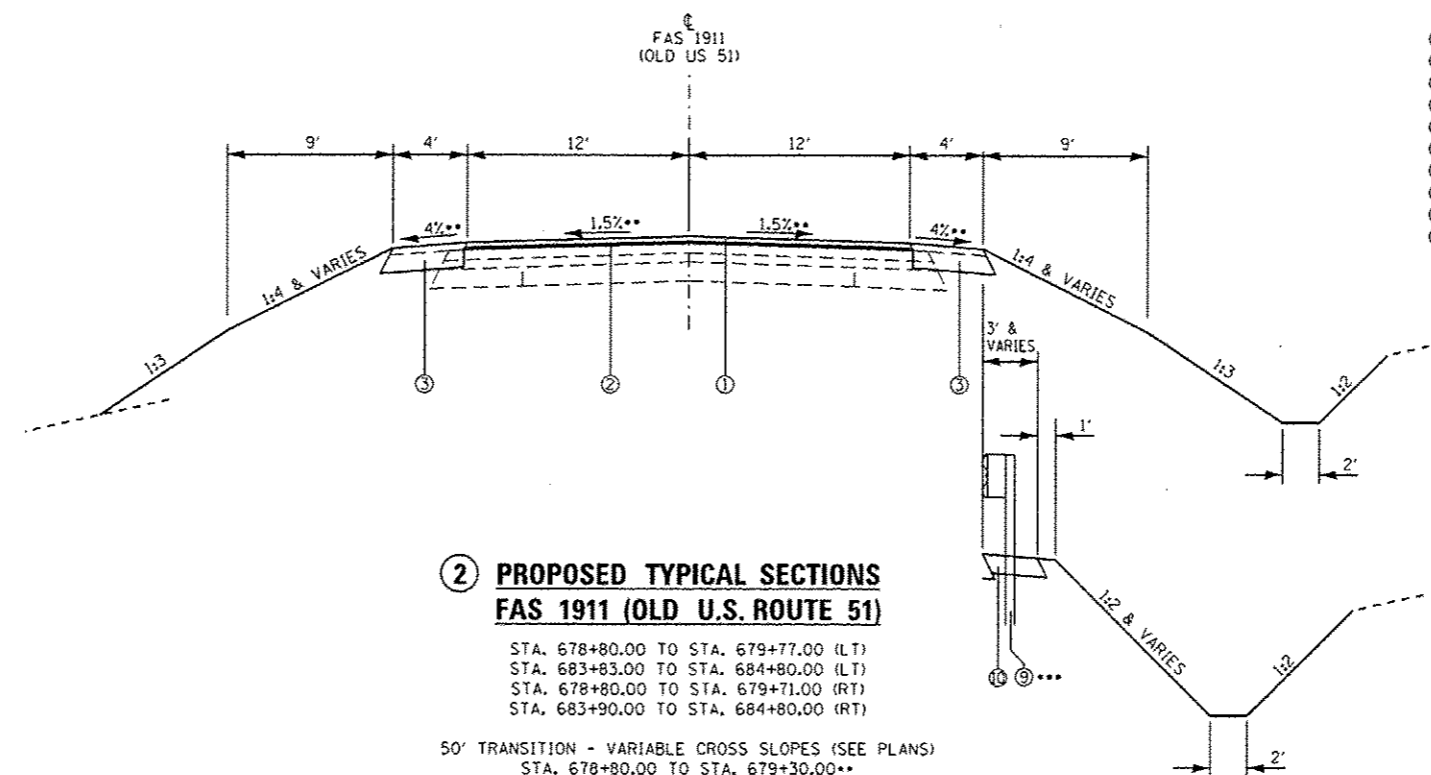
STA. 678+80.00 TO STA. 684+80.00*

*OMIT EX. BRIDGE STA. 681+43.85 TO STA. 682+16.52

*** GUARDRAIL & TRAFFIC BARRIER TERMINALS
STA. 680+54.92 TO STA. 683+79.90 (LT)
STA. 679+70.33 TO STA. 682+95.33 (RT)

PROPOSED

- ① HOT MIX ASPHALT SURFACE COURSE, MIX "C", N70, 1-1/2"
- ② LEVELING BINDER (MACHINE METHOD), N70, 1L-9.5mm FINE GRADE, 3/4" MIN
- ③ HOT MIX ASPHALT SHOULDER, 8"
- ④ BASE COURSE WIDENING, 10"
- ⑤ HOT MIX ASPHALT SHOULDER, 2-1/4"
- ⑥ PORTLAND CEMENT CONCRETE PAVEMENT 10"
- ⑦ HOT MIX ASPHALT SHOULDER, 10"
- ⑧ POROUS GRANULAR EMBANKMENT, CA-10, 1'-0" MIN.
- ⑨ STEEL PLATE BEAM GUARDRAIL, TYPE A, 6 FOOT POSTS
- ⑩ HOT MIX ASPHALT STABILIZATION 6" AT STEEL PLATE BEAM GUARDRAIL



**② PROPOSED TYPICAL SECTIONS
FAS 1911 (OLD U.S. ROUTE 51)**

STA. 678+80.00 TO STA. 679+77.00 (LT)
STA. 683+83.00 TO STA. 684+80.00 (LT)
STA. 678+80.00 TO STA. 679+71.00 (RT)
STA. 683+90.00 TO STA. 684+80.00 (RT)

50' TRANSITION - VARIABLE CROSS SLOPES (SEE PLANS)
STA. 678+80.00 TO STA. 679+30.00**
STA. 684+30.00 TO STA. 684+80.00**

REVISION **REVISOR** **DATE**
⚠️ REVISED SHEET 4-13-15

EFK Moen, LLC
Civil Engineering Design

FILE NAME *	USER NAME * jrd	DESIGNED - JRD	REVISED -	STATE OF ILLINOIS DEPARTMENT OF TRANSPORTATION	TYPICAL SECTIONS	F.A.S. RTE.	SECTION	COUNTY	TOTAL SHEETS	SHEET NO.	
Y:\10057.14 D:\pury Creek\DCM\Design\Final\Plotsheets\688-009-0978214-shr-typical.dgn	DRAWN - JRD	REVISED -	1911			11B-2	UNION	44	8		
MODEL NAME *	PLT SCALE * 10,0000' / in.	CHECKED - SLD	REVISED -			CONTRACT NO. 78214					
	PLT DATE * 1/16/2015	DATE - 1/15/15	REVISED -			ILLINOIS FED. AID PROJECT					
				SCALE: N.T.S. SHEET 1 OF 2 SHEETS							

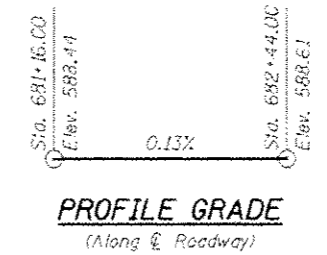
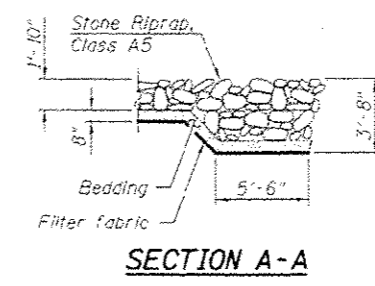
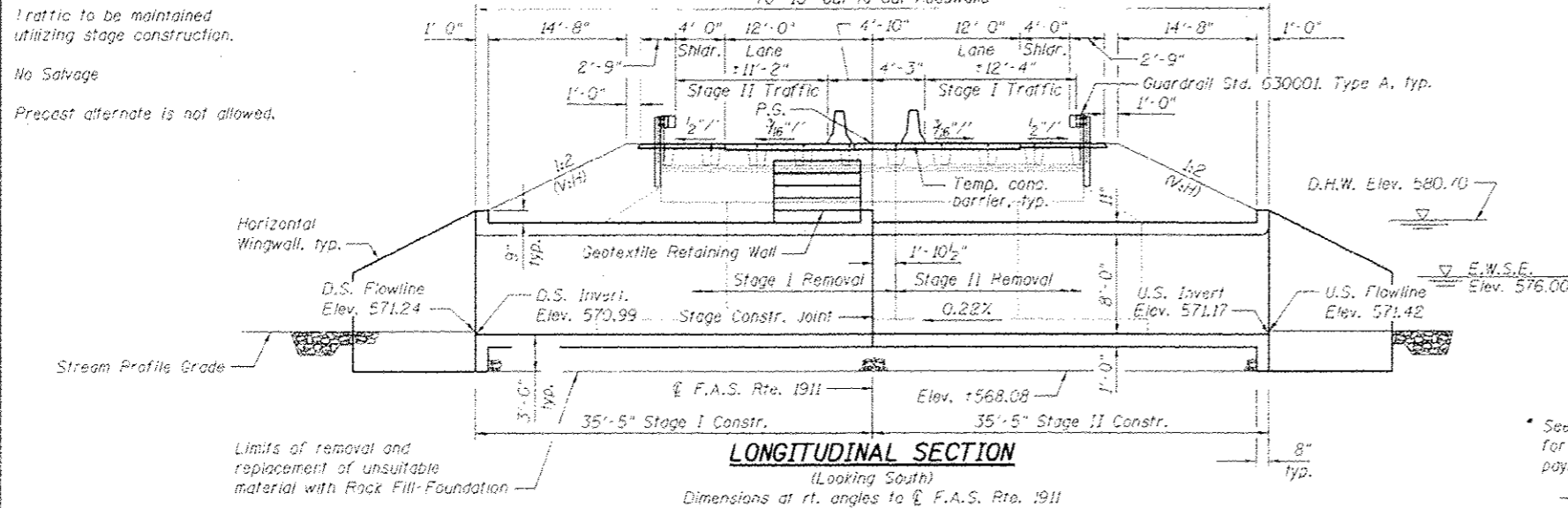
Benon Mark: 3M 910043 - Chiseled square on southeast corner of SN 091-0043, Elev. 587.92

Existing Structure: SN 091-0043 was originally built in 1922 as SBI 2 (Section IIA) and widened during a superstructure replacement in 1980 as FAS 1911 (Section IIA-BR). The existing structure is a 33 foot (back-to-back abutments) single span precast concrete channel beam bridge. The substructure consists of the original closed abutments founded on spread footings with widened abutment caps. The deck measures 33'-3" between rails and the overall out-to-out width of the bridge is 34'-9". The existing structure is to be removed and replaced.

Traffic to be maintained utilizing stage construction.

No Salvage

Precast alternate is not allowed.



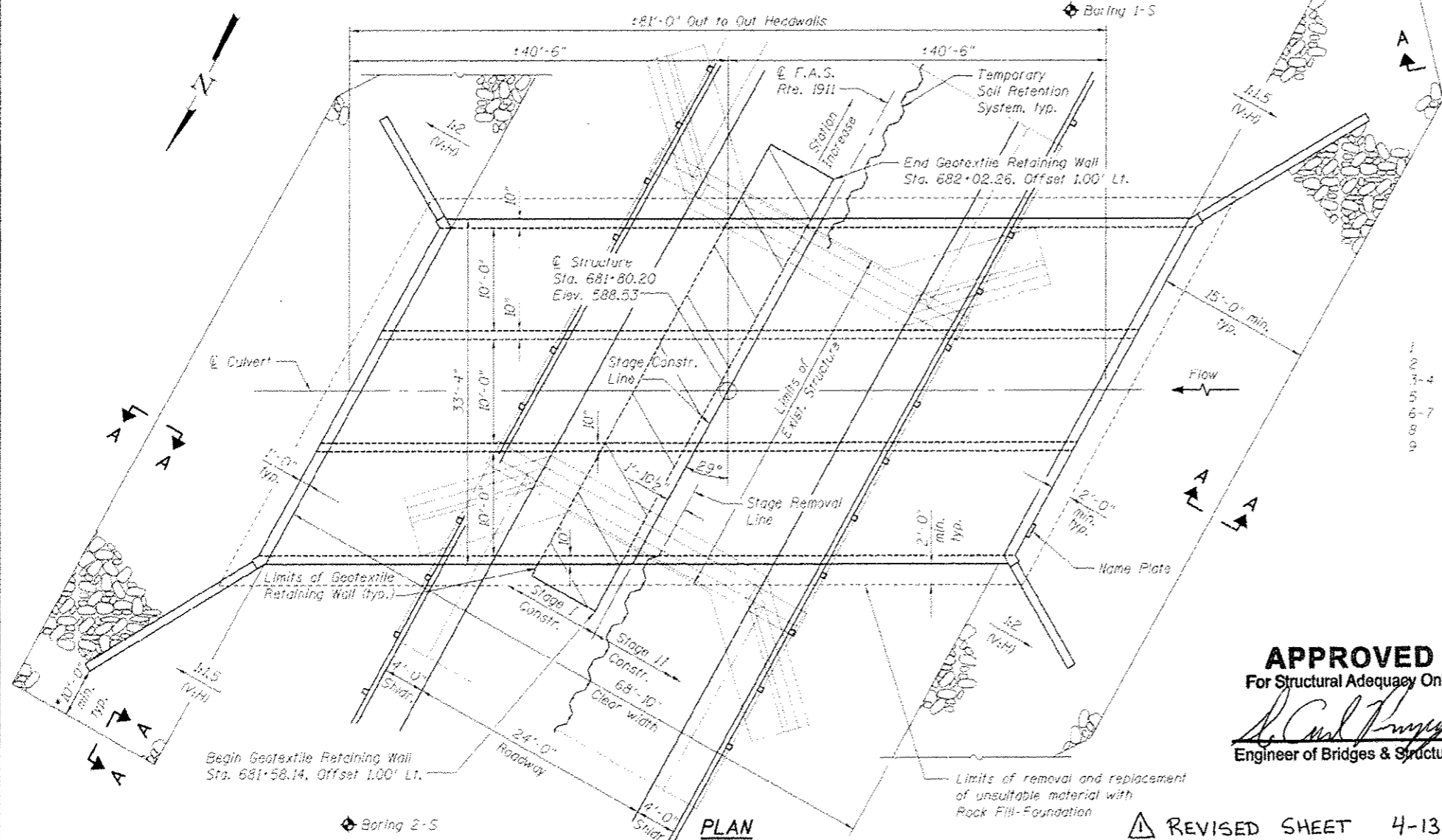
LOADING HL-93
Allow 50#/sq. ft. for future wearing surface.

DESIGN SPECIFICATIONS
2012 AASHTO LRFD
Bridge Design Specifications,
6th Edition

DESIGN STRESSES
FIELD UNITS
f'c = 3,500 psi
fy = 60,000 psi (Reinforcement)

STATION 681+80.20
BUILT 2011 BY
STATE OF ILLINOIS
F.A.S. RTE. 1911 SEC. 11B-2
LOADING HL-93
STRUCTURE NO. 091-2029

NAME PLATE
See Std. 515001



WATERWAY INFORMATION

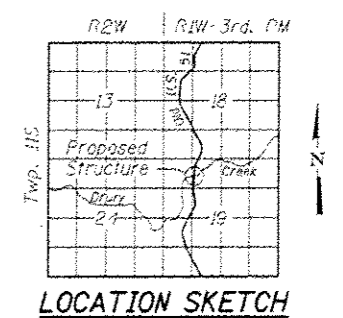
Drainage Area = 1.51 Sq. Mi. Low Grade Elev. 587.70 @ Sta. 676+49.20

Flood Yr.	Freq. Q	C.F.S.	Opening Sq. Ft.		Head - Ft.		Headwater El.		
			Exist.	Prop.	Exist.	Prop.	Exist.	Prop.	
10	1040	107.79	227.40	578.75	0.67	0.14	579.42	578.89	
Design	50	1780	158.96	240.00	580.70	0.90	0.25	581.60	580.95
Base	100	2120	178.90	240.00	581.46	1.26	0.54	582.72	582.00
Overtopping									
Max. Calc.	500	3030	220.10	240.00	583.03	2.63	1.75	585.66	584.79

DESIGN SCOUR ELEVATION TABLE

Design Scour Elevation (ft.)	Upstream		Downstream	
	Exist.	Prop.	Exist.	Prop.
	568.17		567.99	

- INDEX OF SHEETS**
- 1 General Plan and Elevation
 - 2 General Structure Data
 - 3-4 Stage Construction Details
 - 5 Temporary Concrete Barrier For Stage Construction
 - 6-7 Culvert Details
 - 8 Bar Splicer Assembly and Mechanical Splicer Details
 - 9 Boring Logs



APPROVED
For Structural Adequacy Only
[Signature]
Engineer of Bridges & Structures

[Signature]
01/16/2015
JERILYN M. HASSARD
EDWARDSVILLE, ILLINOIS
ILLINOIS LICENSED STRUCTURAL
ENGINEER NO. 081-006521
EXPIRES 11/30/2016

GENERAL PLAN AND ELEVATION
OLD U.S. ROUTE 51
OVER DRURY CREEK
F.A.S. RTE. 1911 - SEC. 11B-2
UNION COUNTY
STATION 681+80.20
STRUCTURE NO. 091-2029

REVISOR'S SHEET 4-13-15