

| COUNTY | ROUTE | SECTION | SHT. NO. |
|-------------|---------|----------------|----------|
| ADAMS | FAS 588 | 14-00021-02-RS | 1 OF 3 |
| COVER SHEET | | | |

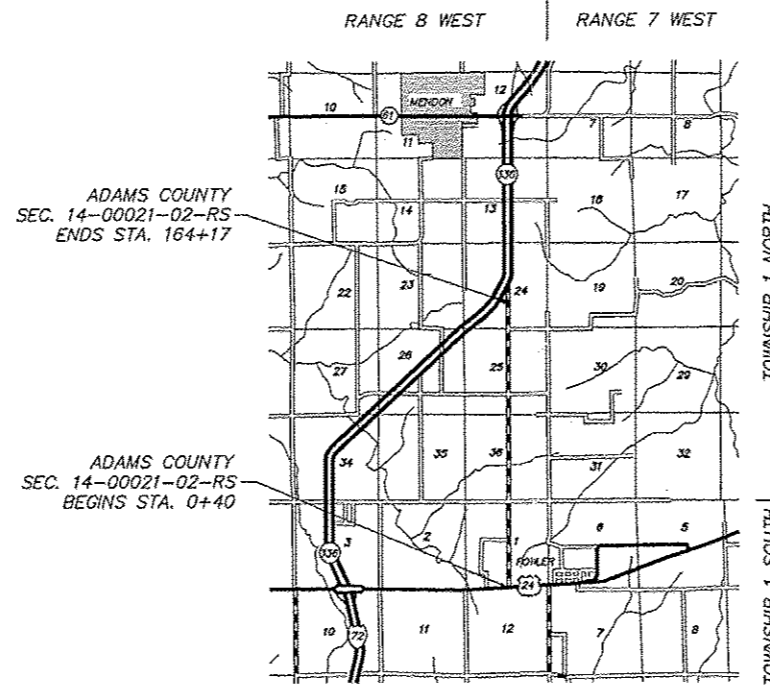
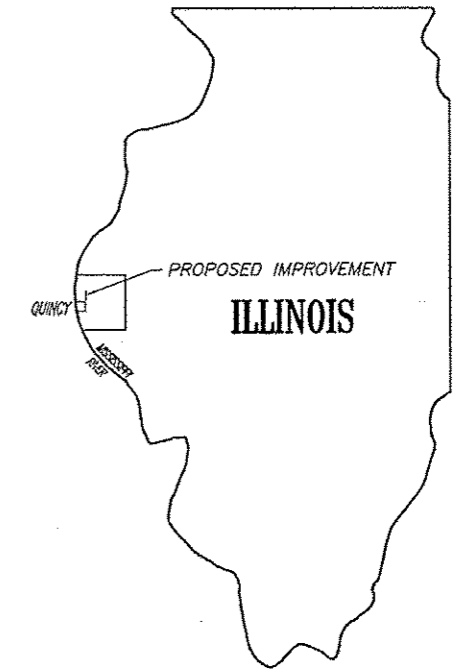
04-24-2015 LETTING ITEM 108

INDEX OF SHEETS

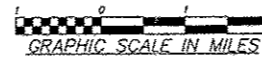
| SHEET NO. | SHEET |
|-----------|---------------------------------------------------------------------------------------------------------------|
| 1 | TITLE SHEET |
| 2 | TYPICAL CROSS SECTIONS SUMMARY OF QUANTITIES GENERAL NOTES APPLICATION RATES TRAFFIC CONTROL PLAN |
| 3 | PLAN SHEET STA. 0+00 TO 1165+00 JOINT DETAIL |

STANDARDS
 STANDARD 701306-03
 STANDARD 701901-04

STATE OF ILLINOIS
DEPARTMENT OF TRANSPORTATION
DIVISION OF HIGHWAYS
PLANS FOR PROPOSED
SURFACE TRANSPORTATION / RURAL PROGRAM FUNDS
FAS 588 (C.H. 28) SEC. 14-00021-02-RS ADAMS COUNTY
PROJECT NO. RS-0001(116)



THE PROPOSED IMPROVEMENT CONSISTS OF A 4" COLD IN-PLACE RECYCLING OF THE EXISTING ROADWAY AND APPLICATION OF A CAPE SEAL SURFACE PRESERVATION TREATMENT.



DESIGN DESIGNATION:
 COLLECTOR -- ADT 375
 DESIGN SPEED -- 50 M.P.H.

SUMMARY OF LENGTH:

GROSS LENGTH:
 STA. 0+40 TO STA. 164+17 = 16,377.00 FT.
 STA. TO STA. = FT.
 16,377.00 FT.
 NET LENGTH TO BE IMPROVED = 16,377.00 FT. = 3.102 MILES

FULL SIZE PLANS HAVE BEEN PREPARED USING STANDARD ENGINEERING SCALES, REDUCED SIZED PLANS WILL NOT CONFORM TO STANDARD SCALES, IN MAKING MEASUREMENTS ON REDUCED PLANS, THE ABOVE SCALES MAY BE USED.

UTILITIES:

J.U.L.I.E. 1-800-892-0123
 ADAMS TELEPHONE CO-OP GOLDEN, IL
 AMERITECH QUINCY, IL
 ADAMS ELECTRIC CO-OP CAMP POINT, IL
 CLAYTON-CAMP POINT WATER DISTRICT ... CAMP POINT, IL
 LIMA-LORRAINE WATER DISTRICT LIMA, IL

JOB NO. C-96-212-14
 CONTRACT NO. 93628



THESE PLANS WERE PREPARED BY ME OR A FULL TIME MEMBER OF MY STAFF WORKING UNDER MY PERSONAL SUPERVISION.

SUBMITTED BY James R. Frankenboff DATE 12/22/14
 COUNTY ENGINEER
 LICENSE NO. 062-044792
 LIC. EXPIRES 11/30/2015

APPROVED 12/22/14
James R. Frankenboff
 COUNTY ENGINEER

PASSED 2/13/2015
Ron Buchanan
 DISTRICT ENGINEER OF CONSTRUCTION

PASSED February 3, 2015
Jeff Dusham
 DISTRICT ENGINEER OF LOCAL ROADS AND STREETS

RELEASING FOR BID BASED ON LIMITED REVIEW February 3, 2015
Boyer L. Orsdell
 DEPUTY DIRECTOR OF HIGHWAYS
 REGION FOUR ENGINEER

STATE OF ILLINOIS
DEPARTMENT OF TRANSPORTATION

PREPARED BY
 ADAMS COUNTY HIGHWAY DEPARTMENT
 101 NORTH 54th STREET, QUINCY, ILLINOIS

| | | | |
|--------------------------|---------|-------------------|----------|
| COUNTY | ROUTE | SECTION | SHT. NO. |
| ADAMS | FAS 588 | 14-00021-02-RS | 2 |
| SUMMARY OF QUANTITIES | | TYPICAL SECTIONS | |
| GENERAL NOTES | | APPLICATION RATES | |
| TRAFFIC CONTROL PLAN | | | |
| PROJECT NO. RS-0001(116) | | | |

SUMMARY OF QUANTITIES

| TOTAL QUANTITY | UNIT | ITEM | SPECIAL PROVISION | CODE NUMBER |
|----------------|--------|-------------------------------------------|-------------------|-------------|
| 60,050 | GALLON | CIR-FOR EMULSIFIED ASPHALT | * | LR400005 |
| 37,694 | SQ YD | COLD IN-PLACE RECYCLING, 4.0" | * | LR400740 |
| 37,694 | SQ YD | SURFACE PROFILE MILLING | * | LR403300 |
| 1 | L SUM | TRAFFIC CONTROL AND PROTECTION, (SPECIAL) | * | X7010216 |
| 40,033 | SQ YD | CAPE SEAL | * | Z0064265 |
| 1 | L SUM | MOBILIZATION | | 67100100 |
| 1,489 | Foot | SHORT TERM PAVEMENT MARKING | | 70300100 |

GENERAL NOTES

WHERE SECTION OR SUB-SECTION STONES, USGS BENCH MARK MONUMENTS, AND U.S. ARMY CORPS OF ENGINEERS SURVEY MARKERS ARE ENCOUNTERED, THE ENGINEER SHALL BE NOTIFIED BEFORE SUCH STONES AND MONUMENTS ARE REMOVED. THE CONTRACTOR SHALL PROTECT AND CAREFULLY PRESERVE ALL PROPERTY MARKS UNTIL AN OWNER, AN AUTHORIZED SURVEYOR OR THEIR REPRESENTATIVE HAS WITNESSED OR OTHERWISE REFERENCED THE PROPERTY MARKS LOCATION.

ALL PRIVATELY OWNED UTILITIES, UNLESS OTHERWISE SPECIFIED, WILL BE MOVED BY THEIR RESPECTIVE OWNERS WHERE REQUIRED.

THE NOMINAL THICKNESS FOR COLD IN-PLACE RECYCLING IS SHOWN ON THE TYPICAL SECTION. THE CONSTRUCTED THICKNESS OF THE ITEM SHALL NOT BE LESS THAN 90% OF THE NOMINAL THICKNESS AT ANY LOCATION.

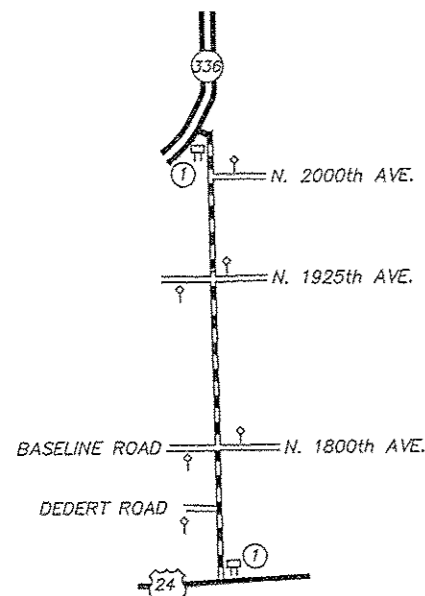
THE CONTRACTOR SHALL BE RESPONSIBLE FOR DETERMINING THE LOCATION AND ELEVATION OF ALL EXISTING UTILITIES AND TO NOTIFY ALL UTILITY COMPANIES PRIOR TO THE BEGINNING OF CONSTRUCTION. THIS WILL BE CONSIDERED INCIDENTAL TO THE CONTRACT. THE UTILITY LOCATIONS MARKED ON THE PLANS ARE FOR REFERENCE ONLY AND DO NOT ABSOLVE THE CONTRACTOR OF HIS RESPONSIBILITY TO LOCATE THE UTILITY.

SHORT-TERM PAVEMENT MARKING SHALL BE SUPPLIED BY THE CONTRACTOR AND SHALL CONFORM TO THE SPECIFICATIONS OF SECTION 703. THE PERMANENT PAVEMENT MARKING SHALL BE DONE BY OTHERS AS SOON AS POSSIBLE AFTER COMPLETION OF THE PROJECT. THE COUNTY WILL BE RESPONSIBLE FOR WORK ZONE PAVEMENT MARKING REMOVAL.

APPLICATION RATES

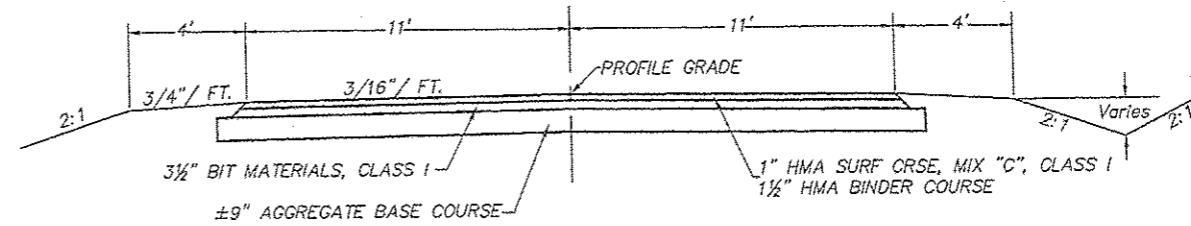
CIR-FOR EMULSIFIED ASPHALT 1.5 GALLON/SQ. YD.

TRAFFIC CONTROL PLAN



- ① G20-1(0)-6036 SIGN
G20-2a(0)-6024 SIGN (OPPOSITE)
- ⚡ ROAD CONSTRUCTION AHEAD
- SEE SPECIAL PROVISIONS FOR APPLICATION OF:
"LOOSE GRAVEL" (W8-7) AND "SPEED LIMIT 35"
"NO PASSING ZONE NOT STRIPPED NEXT ____ MILES"
- STANDARDS: 701306
701901

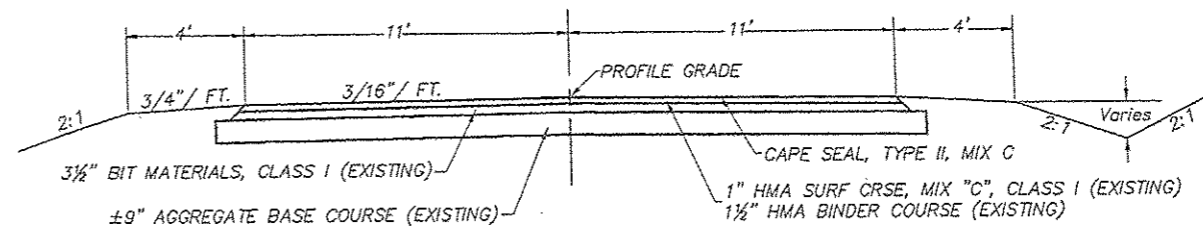
TYPICAL SECTIONS



EXISTING TYPICAL SECTION

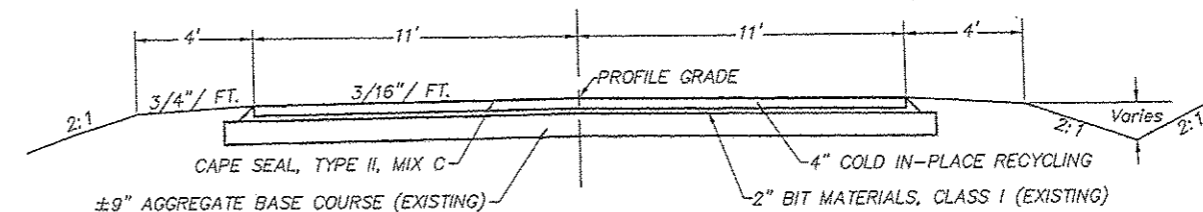
STA. 0+40 TO STA. 155+20

| EXISTING PAVEMENT THICKNESS | | | |
|-----------------------------|------------|------------------------------------------|-----------|
| STATION | OFFSET | SURFACE (HMA, COLD MIX & BIT SURF MATLS) | AGGREGATE |
| 20+00 | NBL 8' RT | 6.5" | 10" |
| 40+00 | CENTERLINE | 6.25" | 8" |
| 60+00 | SBL 8' LT | 6" | 12" |
| 80+00 | CENTERLINE | 6.25" | 8.5" |
| 100+00 | NBL 8' RT | 8" | 7.5" |
| 120+00 | CENTERLINE | 7" | 8.5" |
| 140+00 | SBL 8' LT | 7" | 8" |



PROPOSED TYPICAL SECTION

STA. 0+40 TO STA. 0+50
STA. 154+70 TO STA. 164+17



PROPOSED TYPICAL SECTION

STA. 0+50 TO STA. 154+70

CONTRACT NO. 93628

| COUNTY | ROUTE | SECTION | SHT. NO. |
|--------------------------|---------|----------------|----------|
| ADAMS | FAS 588 | 14-00021-02-RS | 3 |
| STA. 0+00 TO STA. 165+40 | | | |
| PROJECT NO. RS-0001(116) | | | |

