

INDEX OF SHEETS

1	COVER SHEET
2	INDEX OF SHEETS, GENERAL NOTES
3 TO 4	SUMMARY OF QUANTITIES
5 TO 11	TYPICAL SECTIONS
12 TO 13	SCHEDULE OF QUANTITIES
14	SCHEMATIC DIAGRAM
15 TO 32	PROPOSED ROADWAY PLAN
33	MAINTENANCE OF TRAFFIC TYPICAL SECTION
34	MAINTENANCE OF TRAFFIC TYPICAL SECTION - TEMPORARY
35	MAINTENANCE OF TRAFFIC - ADVANCE WARNING DETAIL
36 TO 46	MAINTENANCE OF TRAFFIC STAGE 1
47 TO 57	MAINTENANCE OF TRAFFIC STAGE 2
58	MAINTENANCE OF TRAFFIC - TEMPORARY INFORMATION SIGNING
59	TEMPORARY DETOUR PLAN-I-80 WB ENTRANCE RAMP
60 TO 61	SIGNING SCHEDULE
62 TO 79	PAVEMENT MARKING AND SIGNING PLAN
80 TO 89	SIGN PANEL DETAILS
90	PAVEMENT RELIEF JOINT REMOVAL AND REPLACEMENT DETAIL
91	DISTRICT ONE-DETECTOR LOOP REPLACEMENT
92	TRAFFIC SENSOR DETAIL NEAR CHERRY HILL ROAD
93 TO 98	STRUCTURAL PLANS- I-80 OVER MIDLAND AVENUE
99 TO 104	STRUCTURAL PLANS - I-80 OVER CENTER STREET RAMP AA
105 TO 109	STRUCTURAL PLANS - I-80 OVER CENTER STREET RAMP CC
110 TO 144	STRUCTURAL PLANS - I-80 OVER DES PLAINES RIVER
145 TO 151	STRUCTURAL PLANS- I-80 OVER IL RTE 53 (CHICAGO ST)
152 TO 165	STRUCTURAL PLANS - I-80 OVER RAILROAD / GARDNER STREET
166 TO 173	STRUCTURAL PLANS - I-80 OVER HICKORY CREEK
174 TO 179	STRUCTURAL PLANS- I-80 OVER RICHARDS STREET
180 TO 187	STRUCTURAL PLANS- I-80 OVER CNRR/ROWELL AVENUE
188 TO 203	DISTRICT ONE STANDARDS

GENERAL NOTES

- BEFORE STARTING ANY EXCAVATION, THE CONTRACTOR SHALL CALL "JULIE" AT 800-892-0123 OR 811 FOR FIELD LOCATIONS OF BURIED UTILITIES.
- THE CONTRACTOR SHALL COORDINATE WORK ACTIVITIES WITH UTILITY COMPANIES AS REQUIRED.
- THE CONTRACTOR SHALL COORDINATE WORK ACTIVITIES WITH ADJACENT IDOT CONTRACTS 60M63, 60M64 AND 60M65.
- THE CONTRACTOR WILL NOT BE ALLOWED TO SET UP A YARD OR FIELD OFFICE ON STATE PROPERTY WITHOUT WRITTEN PERMISSION FROM THE DEPARTMENT.
- THE CONTRACTOR SHALL NOTIFY THE EXPRESSWAY TRAFFIC FIELD ENGINEER AT 847-705-4151 AT LEAST 72 HOURS PRIOR TO FINAL PAVEMENT MARKING INSTALLATION.
- THE CONTRACTOR SHALL CONTACT THE DISTRICT ONE TRAFFIC CONTROL SUPERVISOR AT (847) 705-4151 A MINIMUM OF 72 HOURS IN ADVANCE OF BEGINNING WORK.
- THE ALIGNMENTS AND SUPPORTING DATA SHOWN IN THE PLANS WAS DEVELOPED FROM PREVIOUS PLANIMETRICS AND AERIAL PHOTOGRAPHY FURNISHED BY THE DEPARTMENT AND IS NOT THE RESULT OF A GROUND SURVEY. THEREFORE, THE ALIGNMENTS AND SUPPORTING DATA SHOWN IN THE PLANS IS FOR REFERENCE PURPOSES ONLY. THE RELATIVE ACCURACY OF THE INFORMATION IS UNKNOWN AND CANNOT BE GUARANTEED. THE CONTRACTOR MAY BE REQUIRED TO ADJUST LAYOUT TO MATCH ACTUAL FIELD CONDITIONS AND THE INTENT OF THE PLANS.
- THE CONTRACTOR SHALL USE CARE IN WORKING NEAR ANY AND ALL EXISTING ITEMS THAT WILL BE REPAIRED BY THE CONTRACTOR AT THE CONTRACTOR'S OWN EXPENSE.
- DRAINAGE ADJUSTMENT, CLEANING OR RECONSTRUCTION LOCATIONS WILL BE DETERMINED IN THE FIELD BY THE ENGINEER.
- EXISTING BROKEN FRAMES AND LIDS SHALL BE REMOVED AND DISPOSED OF BY THE CONTRACTOR AND SHALL BE REPLACED AS DIRECTED BY THE ENGINEER. REPLACEMENT FRAMES AND LIDS WILL BE PAID FOR IN ACCORDANCE WITH ARTICLE 109.04 OF THE STANDARD SPECIFICATIONS UNLESS A SEPARATE PAY ITEM HAS BEEN PROVIDED.
- VERTICAL CLEARANCES OF BRIDGES SHALL BE MAINTAINED. THE CONTRACTOR SHALL VERIFY ALL BRIDGE CLEARANCE BEFORE AND AFTER CONSTRUCTION AND FURNISH RESULTS TO THE ENGINEER. THIS WORK SHALL BE INCLUDED IN THE LUMP SUM PRICE FOR CONSTRUCTION LAYOUT.
- BEFORE BEGINNING ANY WORK, THE CONTRACTOR SHALL RETAIN AND RECORD FOR FUTURE REFERENCE, ALL EXISTING PAVEMENT MARKING LINES (AND RAISED REFLECTIVE PAVEMENT MARKINGS) IN ORDER THAT THESE LOCATIONS CAN BE RE-ESTABLISHED FOR STRIPING. EXACT LOCATIONS OF ALL PAVEMENT MARKING SHALL BE DIRECTED THE ENGINEER.
- IT SHALL BE THE CONTRACTOR'S RESPONSIBILITY TO VERIFY ALL DIMENSIONS AND CONDITIONS EXISTING IN THE FIELD PRIOR TO CONSTRUCTION AND ORDERING MATERIALS.
- THE CONTRACTOR SHALL TAKE ALL NECESSARY SAFETY PRECAUTIONS TO PROTECT AND PROVIDE ACCESS TO ABUTTING PROPERTY, UTILITIES, PEDESTRIANS, AND VEHICULAR TRAFFIC.

GENERAL NOTES

- SAW CUTTING IS INCLUDED TO THE PROPOSED ITEM OF WORK SPECIFIED, UNLESS OTHERWISE SHOWN IN PLAN.
- ALL PAVEMENT PATCHING LOCATIONS WILL BE DETERMINED IN THE FIELD BY THE ENGINEER.
- WHEN MILLED PAVEMENT IS OPEN TO TRAFFIC, THE MAXIMUM VERTICAL GRADE DIFFERENTIAL BETWEEN LANES SHALL NOT EXCEED 1/2". WHEN NEWLY PLACED ASPHALT IS OPENED TO TRAFFIC, THE MAXIMUM LIFT DIFFERENCE BETWEEN TRAVEL LANES SHALL NOT EXCEED 2". GRADE DIFFERENTIALS BETWEEN TRAVEL LANES UP TO A MAXIMUM OF 4" ARE ALLOWED WITH INSTALLATION OF A TEMPORARY WEDGE OF MILLED SLOPE EDGE AT A MINIMUM GRADE OF 1:3 (V:H). INSTALLATION AND REMOVAL OF TEMPORARY WEDGES AND/OR TAPERED MILLED EDGES SHALL NOT BE PAID FOR SEPERATELY BUT SHALL BE INCLUDED IN THE COST OF THE CONTRACT.
- WHERE ARTIFICIAL LIGHTING IS USED IN NIGHT OPERATIONS, THE CONTRACTOR SHALL EXERCISE THE UTMOST PRECAUTIONS IN PREVENTING ADVERSE VISIBILITY TO THE MOTORING PUBLIC AND ADJOINING RESIDENTIAL AREAS.
- EXISTING PAVEMENT MARKINGS THAT CONFLICT WITH REVISED TRAFFIC PATTERNS SHALL BE REMOVED AS DIRECTED BY THE ENGINEER. THIS WORK WILL BE PAID FOR A THE CONTRACT UNIT PRICE PER SQUARE FOOT FOR PAVEMENT MARKING REMOVAL.
- TEMPORARY EDGE LINES IN THE SUGGESTED MAINTENANCE OF TRAFFIC MUST BE INSTALLED BEFORE LANES REOPEN TO TRAFFIC.
- VERTICAL PANELS OR BARRELS WILL REMAIN IN PLACE ALONG THE EDGES OF PAVEMENT AS SHOWN IN THE SUGGESTED MAINTENANCE OF TRAFFIC PLANS UNTIL THE SURFACE COURSE AND PROPOSED PAVEMENT MARKING EDGE LINES HAVE BEEN COMPLETED.
- SURFACE TESTING OF ASPHALT PAVEMENTS WILL BE PERFORMED BY THE CONTRACTOR AS DESCRIBED IN THE CONTRACT SPECIAL PROVISIONS AND THE COST SHALL BE INCLUDED IN THE COST OF THE HMA ITEMS BEING TESTED.
- ALL TRAFFIC CONTROL, DEVICES, BARRICADES, DRUMS, LANE CLOSURES, TEMPORARY PAVEMENT MARKINGS, ETC. ALONG THE CROSSROADS WITHIN THE CONTRACT LIMITS, UNLESS OTHERWISE SPECIFIED IN THE TRAFFIC CONTROL PLANS, SHALL NOT BE PAID FOR SEPERATELY, BUT SHALL BE INCLUDED IN THE LUMP SUM PRICE FOR "TRAFFIC CONTROL AND PROTECTION (EXPRESSWAYS)". THE CONTRACTOR SHALL USE APPROPRIATE IDOT OR DISTRICT ONE STANDARD AND OBTAIN APPROVAL FROM THE ENGINEER.
- THE CONTRACTOR SHALL MODIFY, OR SUPPLEMENT, EXISTING SIGN PANEL MOUNTING BRACKERS AS REQUIRED FOR PROPER INSTALLATION OF THE PROPOSED SIGN PANELS, INCLUDING ALL LABOR, EQUIPMENT, MATERIALS, AND HARDWARE AS DIRECTED BY THE ENGINEER. THIS WORK SHALL BE INCLUDED IN THE COST OF SIGN PANEL - TYPE 3.
- CONTRACTOR TO PATCH BEFORE MILLING. CLASS D PATCHES SHALL BE PLACED ON THE MAINLINE AND CLASS C PATCHES SHALL BE PLACED ON THE RAMPS AS DIRECTED BY THE ENGINEER

HOT-MIX ASPHALT REQUIREMENTS

MIXTURE TYPE	AIR VOIDS	THICKNESS
MAINLINE, INSIDE SHOULDERS AND RAMP RESURFACING		
POLYMERIZED HOT-MIX ASPHALT SURFACE COURSE, STONE MATRIX ASPHALT, N80	3.5% @ 80 GYR	2"
POLYMERIZED HOT-MIX ASPHALT BINDER COURSE, STONE MATRIX ASPHALT, N80	3.5% @ 80 GYR	2"
OUTSIDE SHOULDER RESURFACING		
HOT-MIX ASPHALT BINDER COURSE, IL-19.0,N70	4% @ 70 GYR	2-1/2"
HOT-MIX ASPHALT SURFACE COURSE, MIX "D", N70 (IL 9.5mm)	4% @ 70 GYR	1-1/2"
PATCHING		
CLASS D PATCHES (HMA BINDER IL-25 mm)	4% @ 105 GYR	10"
HMA REPLACEMENT OVER PATCHES (HMA BINDER IL-19MM)	4% @ 70 GYR	4"

- THE UNIT WEIGHT USED TO CALCULATE ALL HOT-MIX SURFACE MIXTURES IS 112 LBS/SQ YD/INCH THICKNESS.
- THE "AC TYPE" FOR POLYMERIZED HMA MIXES SHALL BE "SBS/SBR PG 70-22" AND FOR NON-POLYMERIZED HMA THE "AC TYPE" SHALL BE "PG 64-22" UNLESS MODIFIED BY DISTRICT ONE SPECIAL PROVISIONS. FOR "PERCENT OF RAP" SEE DISTRICT ONE SPECIAL PROVISIONS.
- PAY FOR PERFORMANCE PERTAINS TO THE MAINLINE SMA SURFACE AND SMA BINDER ONLY.

17A IF WEDGE IS INSTALLED FOLLOWING BINDER REMOVAL, PROPOSED BINDER MUST BE PLACED WITHIN 72 HOURS.

HIGHWAY STANDARDS

- 000001-06 STANDARDS SYMBOLS, ABBREVIATIONS AND PATTERNS
- 442201-03 CLASS C AND D PATCHES
- 482011-03 HMA SHLD. STRIPS/SHLDS WITH RESURFACING OR WIDENING AND RESURFACING PROJECTS
- 642001-01 SHOULDER RUMBLE STRIPS
- 701101-02 OFF-ROAD OPERATIONS, MULTILANE, 15' TO 24" FROM PAVEMENT EDGE
- 701400-05 APPROACH TO LANE CLOSURE, FREEWAY/EXPRESSWAY
- 701401-06 LANE CLOSURE, FREEWAY/EXPRESSWAY
- 701411-07 LANE CLOSURE, MULTILANE, ENTRANCE AT ENTRANCE OR EXIT RAMP FOR SPEEDS >45 MPH
- 701901-01 TRAFFIC CONTROL DEVICES
- 704001-06 TEMPORARY CONCRETE BARRIER
- 701422-03 LANE CLOSURES, MULTILANE, FOR SPEEDS >=45 MPH TO 55 MPH
- 701501-06 URBAN LANE CLOSURE, 2L, 2W, UNDIVIDED
- 720001-01 SIGN PANEL MOUNTING DETAILS
- 720006-02 SIGN PANEL ERECTION DETAILS
- 720011-01 METAL POSTS FOR SIGNS, MARKERS & DELINEATORS
- 720021-02 SIGN PANELS EXTRUDED ALUMINUM TYPE
- 729001-01 APPLICATIONS OF TYPES A & B METAL POSTS (FOR SIGNS & MARKERS)

FILE NAME = c:\cadd\lib\p\rr\rose\p\great_lakes\dms34565\0160M66-sht-genote.dgn

URBAN

SUMMARY OF QUANTITIES

Table with columns: CODE NO., ITEM DESCRIPTION, UNIT, 100% STATE TOTAL QUANTITIES, CONSTRUCTION TYPE CODE (0005, 0014, 0005). Rows include items like TREE REMOVAL, SEEDING, FERTILIZER, MOWING, ASPHALT SURFACE REMOVAL, etc.

URBAN

SUMMARY OF QUANTITIES

Table with columns: CODE NO., ITEM DESCRIPTION, UNIT, 100% STATE TOTAL QUANTITIES, CONSTRUCTION TYPE CODE (0005, 0014, 0005). Rows include items like PROTECTIVE SHIELD, CONCRETE STRUCTURES, SLOPEWALL, etc.

Revision table with columns: USER NAME, PLOT SCALE, PLOT DATE, DESIGNED, DRAWN, CHECKED, DATE, REVISED.

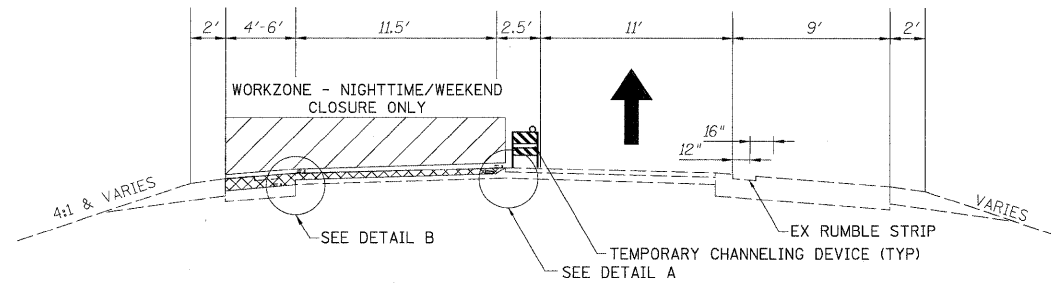


STATE OF ILLINOIS DEPARTMENT OF TRANSPORTATION

Rev. 3-1-11 Rev. 3-4-11 SUMMARY OF QUANTITIES

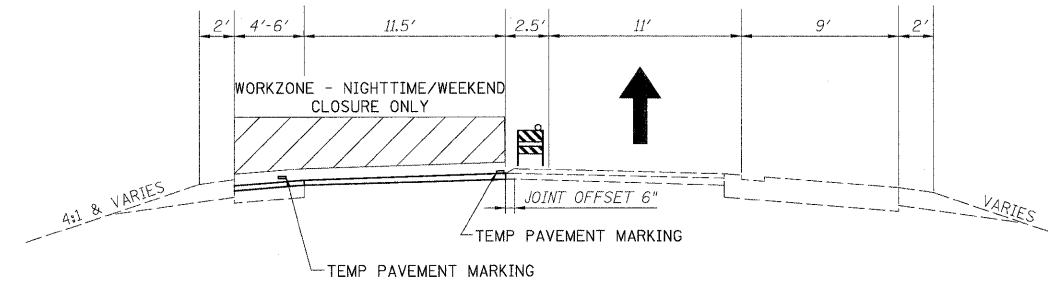
* SPECIALTY ITEMS

Table with columns: F.A.I. RTE., SECTION, COUNTY, TOTAL SHEETS, SHEET NO., CONTRACT NO., FED. ROAD DIST. NO., ILLINOIS FED. AID PROJECT.



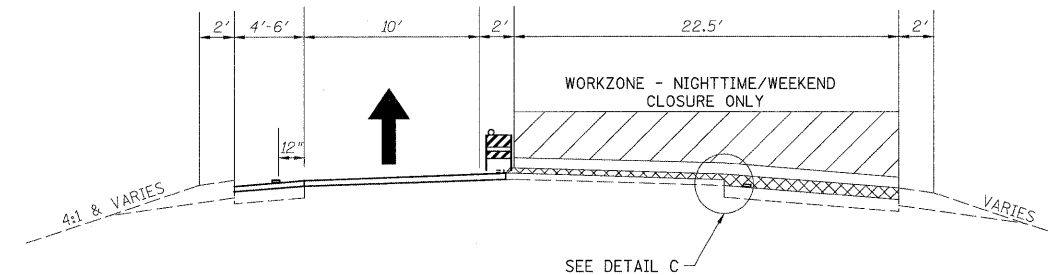
OPERATION 1

- GRIND 4" INSIDE SHOULDER
- GRIND 2" SMA SURFACE LANE 1
- TEMPORARY CHANNELING DEVICE REQUIRED ALONG OUTSIDE SHOULDER (SEE NOTE 6)



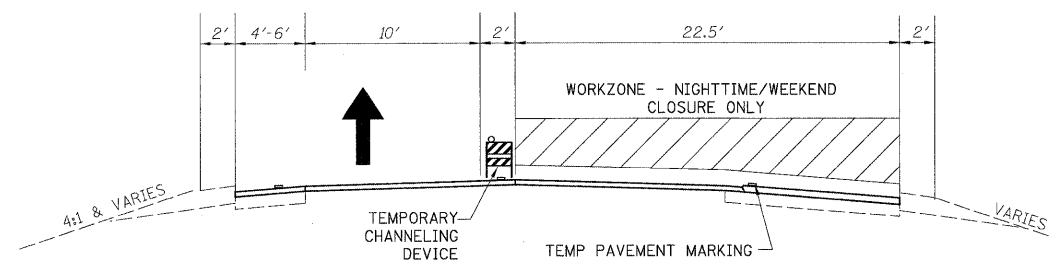
OPERATION 2

- GRIND 2" BINDER ASPHALT AND PLACE 2" SMA BINDER LANE 1 (SAME CLOSURE)
- PLACE INSIDE SHOULDER BINDER



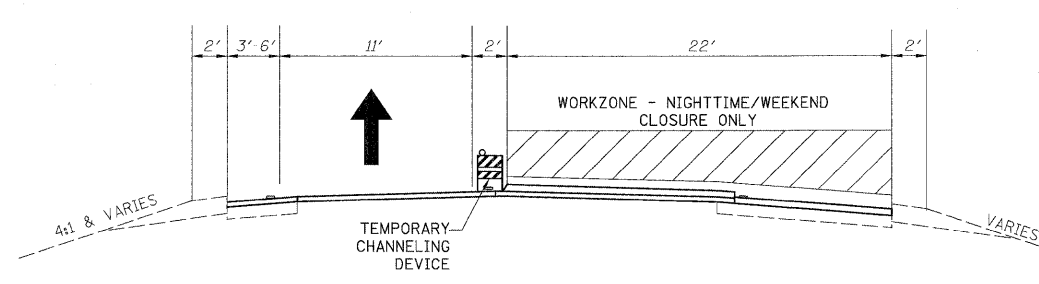
OPERATION 3

- GRIND 4" OUTSIDE SHOULDER
- GRIND 2" SURFACE ASPHALT LANE 2



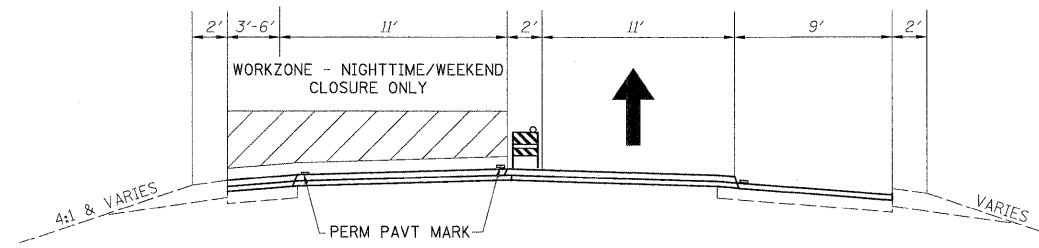
OPERATION 4

- GRIND 2" BINDER ASPHALT AND PLACE 2" SMA BINDER LANE 2 (SAME CLOSURE)
- PLACE OUTSIDE SHOULDER BINDER



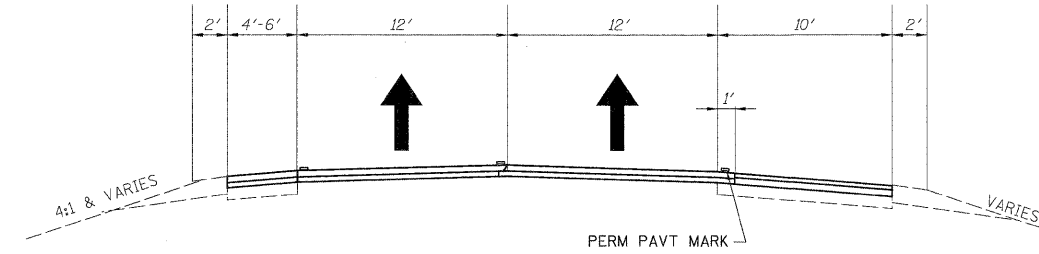
OPERATION 5

- PLACE 2" SMA SURFACE LANE 2



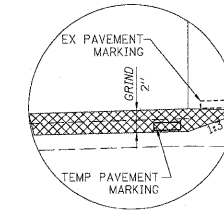
OPERATION 6

- PLACE 2" SMA SURFACE LANE 2

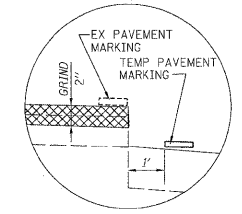


OPERATION 7

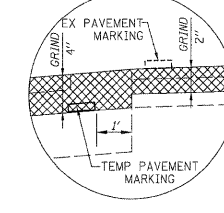
- PLACE OUTSIDE SHOULDER SURFACE
- INSTALL RUMBLE STRIP



DETAIL A



DETAIL C



DETAIL B

NOTES:

1. ALL OPERATIONS TO BE PERFORMED UNDER TEMPORARY NIGHTTIME/WEEKEND CLOSURES. DAYTIME TRAFFIC WILL UTILIZE EXISTING TRAFFIC CONFIGURATION.
2. IDOT STANDARD 701401-06 SHALL BE FOLLOWED FOR ALL TEMPORARY LANE CLOSURE
3. SURFACE REMOVAL WILL BE PAID AS HOT-MIX ASPHALT SURFACE REMOVAL, 4" (44000165) REGARDLESS OF THE NUMBER OF PASSES.
4. FOR HMA MIX TABLE, SEE GENERAL NOTES.
5. MOT TYPICAL SECTIONS HAVE WESTBOUND SHOWN. EASTBOUND IS SIMILAR.
6. BARRICADES ARE REQUIRED ALONG ALL SHOULDERS FOR DROPOFFS GREATER THAN 3", AND LOW SHOULDER SIGNS (2 MILE SPACING) ARE REQUIRED FOR ALL SHOULDER DROPOFFS GREATER THAN 1 INCH.
7. PAVEMENT PATCHING TO BE DONE PRIOR TO THE TRAFFIC OPERATIONS SHOWN.
8. THE CONTRACTOR IS ADVISED THAT THE EXISTING MAINLINE SURFACE ASPHALT CONTAINS SLAG AND ALL LIMITS AND RESTRICTIONS FOR USE OF THIS MATERIAL AS RAP SHALL APPLY.
9. EPOXY PAVEMENT MARKINGS WILL BE USED ON ALL MILLED SURFACES AS TEMPORARY PAVEMENT MARKINGS. THIS WORK WILL BE PAID AS WET REFLECTIVE TEMPORARY TAPE. SEE CONTRACT SPECIAL PROVISIONS.
10. ANY MAINLINE BINDER REMOVED WILL BE REPLACED BEFORE RE-OPENING THE ROAD TO TRAFFIC.
11. ANY PAVEMENT MARKING (TEMPORARY OR PERMANENT) REMOVED UNDER THIS CONTRACT SHALL BE REPLACED BY THIS CONTRACT PRIOR TO RE-OPENING THE LANES TO TRAFFIC.

12 ALL MAINTENANCE OF TRAFFIC - TYPICAL SECTIONS FOR TEMPORARY LANE CLOSURES ARE SUGGESTED SEQUENCES OF OPERATIONS.

USER NAME = mvasakl@rdwy.lisle	DESIGNED - MJV	REVISED - 03/04/11 ADDENDUM B		STATE OF ILLINOIS DEPARTMENT OF TRANSPORTATION			MAINTENANCE OF TRAFFIC - TYPICAL SECTIONS FOR TEMPORARY LANE CLOSURES			F.A.I. RTE.	SECTION	COUNTY	TOTAL SHEETS	SHEET NO.
PLOT CONFIG = PDF(1-80_TopoGrey_Large.plt)	DRAWN - MJV	REVISED -								80	99 (4 & 4-1) RS-3	WILL	203	34
PLOT SCALE = 1:10,000	CHECKED - DTH	REVISED -								CONTRACT NO. 60M66				
PLOT DATE = 1/18/2011	DATE - 1/20/2011	REVISED -								FED. ROAD DIST. NO. 1 [ILLINOIS] FED. AID PROJECT				
SCALE: N/A			SHEET NO. 1 OF 1 SHEETS STA. TO STA.											