

05/14/02 PM 01:11:03 10017.GD:Sheet 1 of 2

DESIGN AND PLAN PREPARATION ENGINEER : K. ENG / M. GOMEZ (847) 705 - 4432

STATE OF ILLINOIS
DEPARTMENT OF TRANSPORTATION
DIVISION OF HIGHWAYS

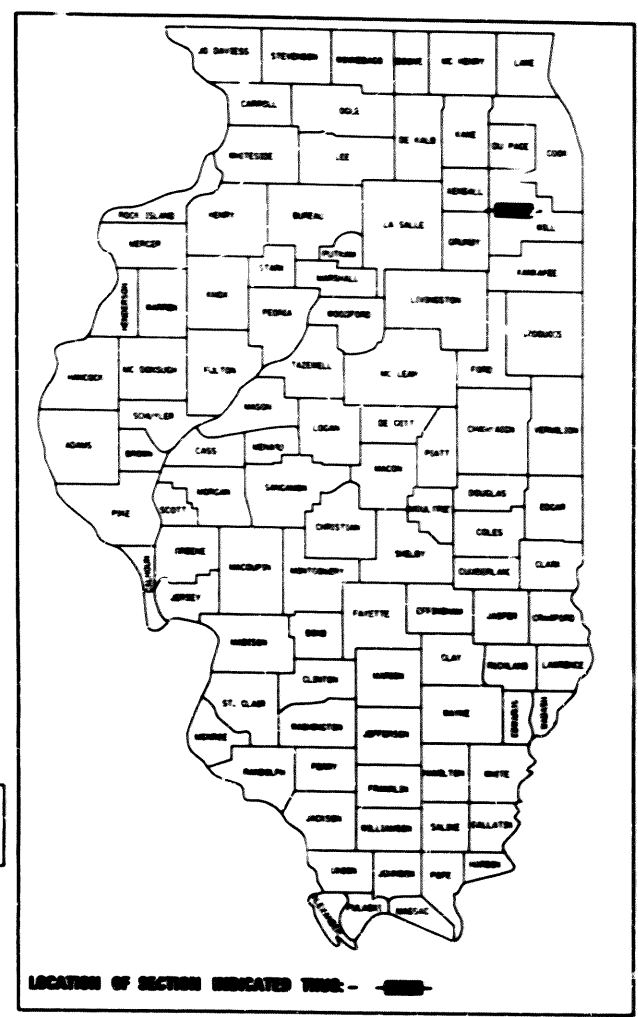
PROPOSED
HIGHWAY PLANS

F.A.I. ROUTE 80 (INTERSTATE 80)
GRUNDY COUNTY LINE TO ROWELL STREET
RESURFACING (MAINT.) & BRIDGE REPAIRS
SECTION (99 [1,2,3,4] & 4-1) RS-7
C-91-507-00
WILL COUNTY

F.A.I. RTE.	SECTION	COUNTY	TOTAL SHEETS	SHEET NO.
80		WILL	82	1

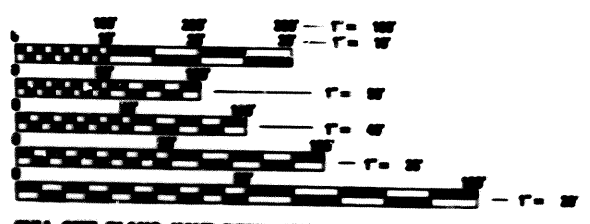
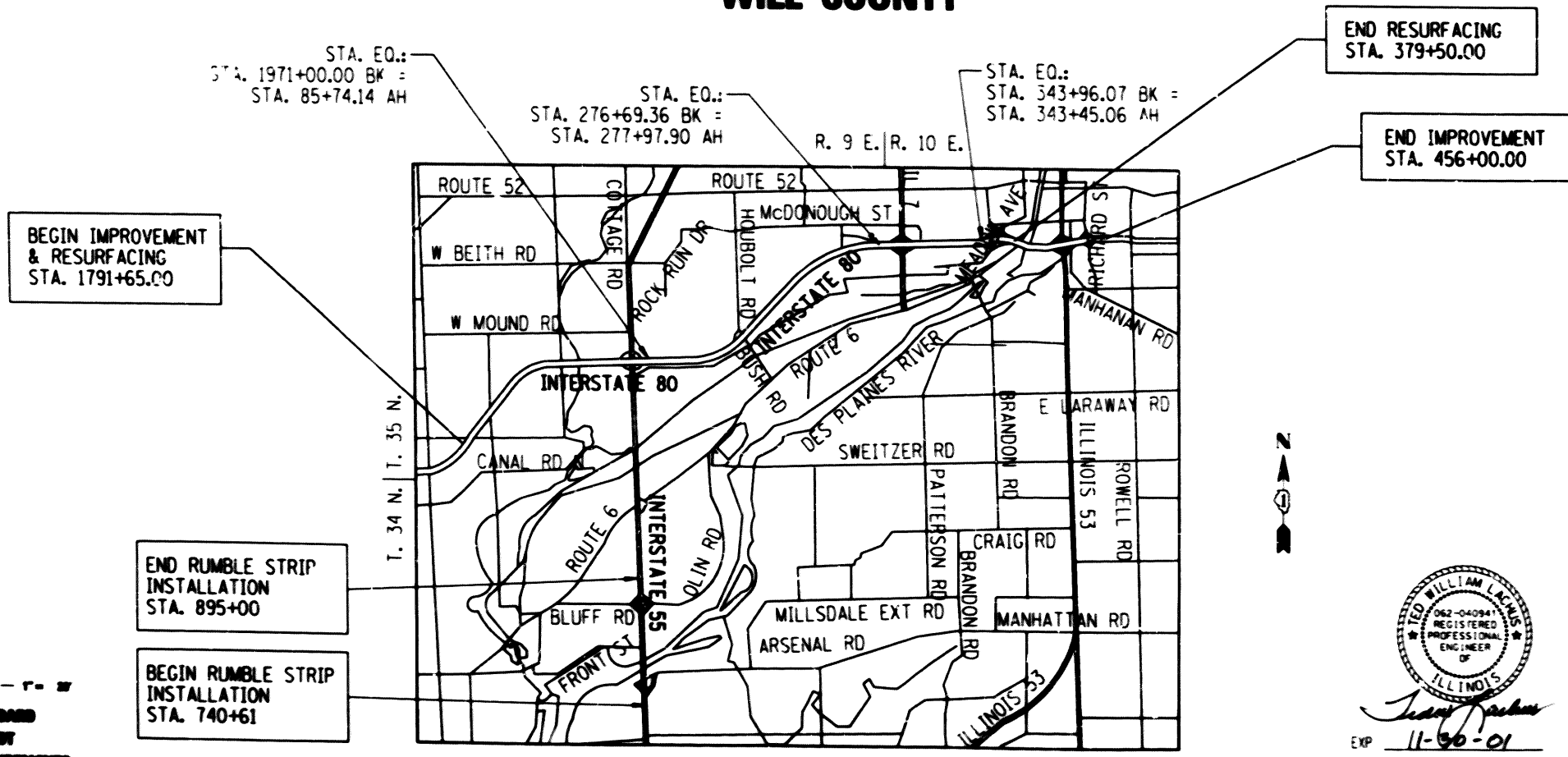
99 (1,2,3,4 & 4-1) RS-7

D-91-507-00



FOR INDEX OF SHEETS, SEE SHEET NO. 2

THIS IMPROVEMENT IS LOCATED WITHIN
ROCKDALE AND JOLIET



FULL SIZE PLANS HAVE BEEN PREPARED USING STANDARD ENGINEERING SCALE. REDUCED SIZE PLANS WILL NOT CONFORM TO STANDARD SCALE. IN MAKING MEASUREMENTS ON REDUCED PLANS, THE ABOVE SCALES MAY BE USED.

SCALE
JOINT UTILITY LOCATION INFORMATION FOR EXCAVATION
1-800-888-0888

CONTRACT NO. 62002

END RESURFACING
STA. 379+50.00

END IMPROVEMENT
STA. 456+00.00

SEAL: WILLIAM LACUS, REGISTERED PROFESSIONAL ENGINEER OF ILLINOIS
 EXP. 11-30-01

STATE OF ILLINOIS
DEPARTMENT OF TRANSPORTATION
DIVISION OF HIGHWAYS

SUBMITTED: April 12, 2001
 District Engineer: [Signature]
 May 11, 2001
 Director of State and Government: [Signature]
 May 11, 2001
 Director of Highways: [Signature]

PRINTED BY THE AUTHORITY
OF THE STATE OF ILLINOIS

PATRICK ENGINEERING, INC.
 TED R. LACUS, P.E.
 # 062-040941
 DATE: 4-10-01

S.A.L. NO.	SECTION	COUNTY	TOTAL SHEETS	SHEET NO.
80	•	WILL	82	56
STA.		TO STA.		
100+00.00		100+00.00		

• 99 IL 2, 3, 4 & 4-URS-7

GENERAL NOTES

PLAN DIMENSIONS AND DETAILS RELATIVE TO EXISTING STRUCTURES HAVE BEEN TAKEN FROM EXISTING PLANS AND ARE SUBJECT TO NOMINAL CONSTRUCTION VARIATIONS. IT SHALL BE THE CONTRACTOR'S RESPONSIBILITY TO VERIFY SUCH DIMENSION AND DETAILS IN THE FIELD AND MAKE NECESSARY APPROVED ADJUSTMENTS PRIOR TO CONSTRUCTION OR ORDERING OF MATERIALS. SUCH VARIATION SHALL NOT BE CAUSE FOR ADDITIONAL COMPENSATION FOR A CHANGE IN THE SCOPE. HOWEVER, THE CONTRACTOR WILL BE PAID FOR THE QUANTITY ACTUALLY FURNISHED AT THE UNIT BID PRICE ON THE WORK.

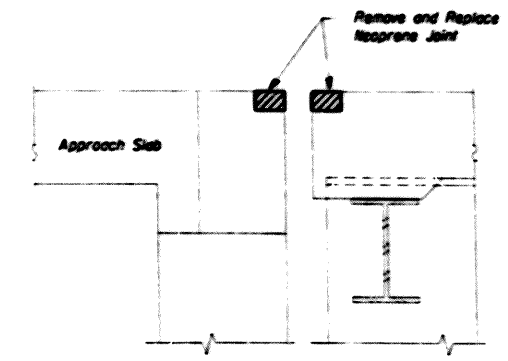
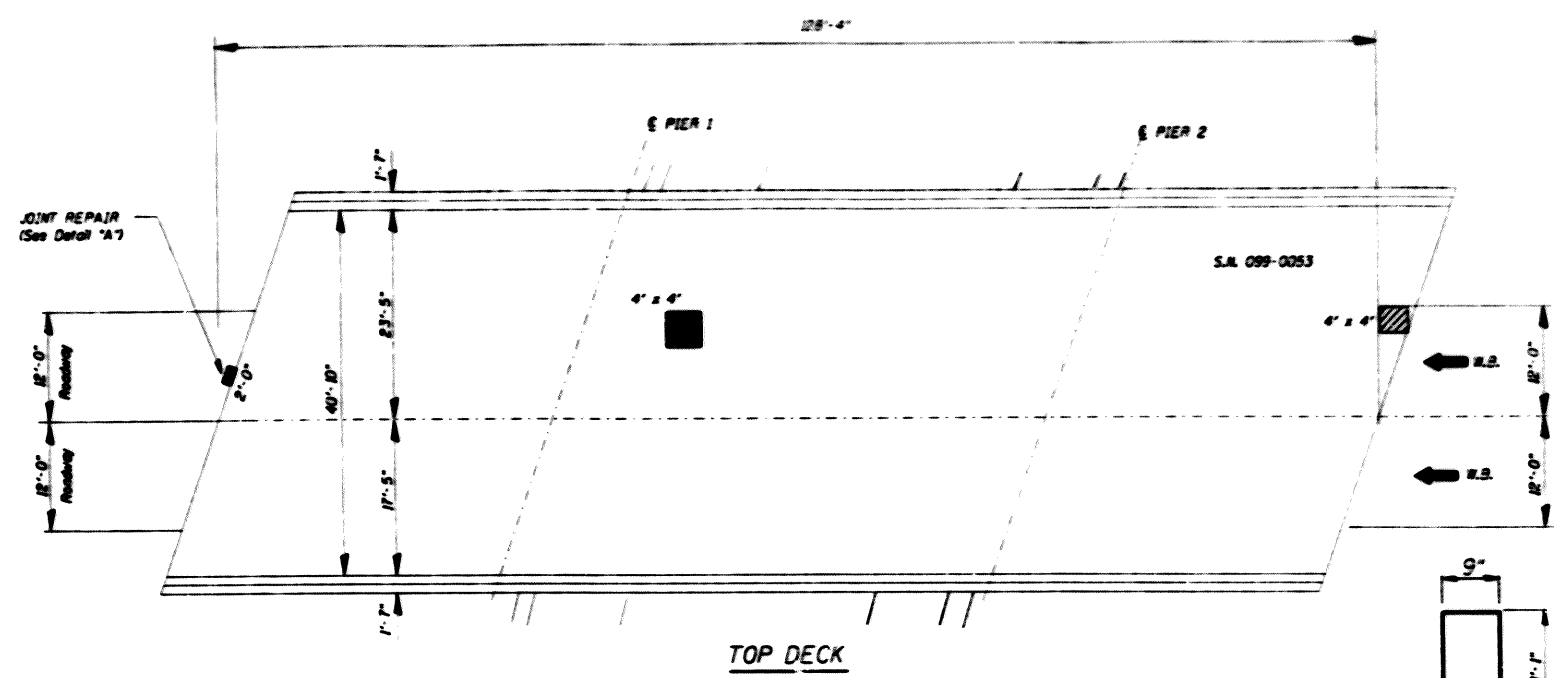
EXISTING REINFORCEMENT BARS EXTENDING INTO THE REMOVAL AREA SHALL BE CLEANED, STRAIGHTENED AND INCORPORATED INTO THE NEW CONSTRUCTION. ANY REINFORCEMENT BARS THAT ARE DAMAGED DURING CONCRETE REMOVAL SHALL BE REPLACED WITH AN APPROVED BAR SPLICER OR ANCHORAGE SYSTEM. COST INCLUDED WITH CONCRETE REMOVAL.

AREAS OF DECK REPAIRS ARE ESTIMATED THE ACTUAL TYPE AND LOCATION OF THE DECK REPAIRS ARE TO BE DETERMINED BY THE ENGINEER DURING CONSTRUCTION.

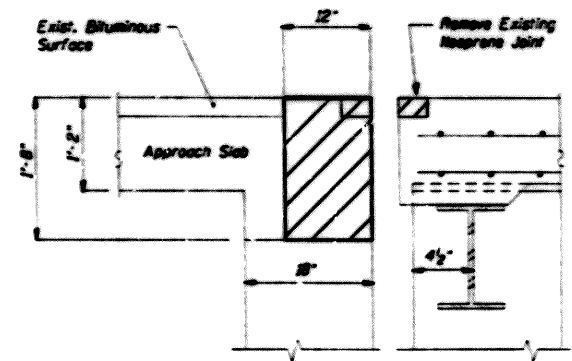
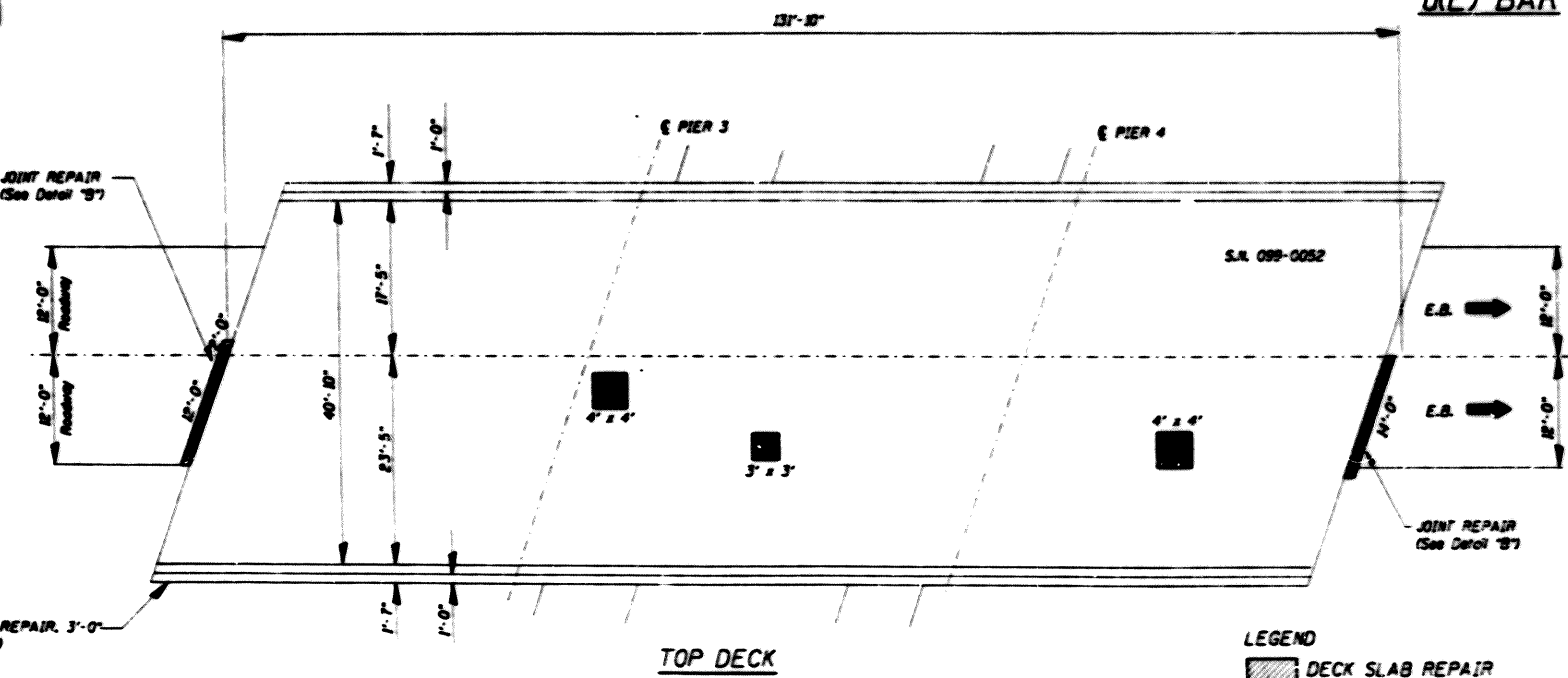
THE ENGINEER SHALL MARK THE LOCATIONS OF THE REPAIRS ON THE AS-BUILT PLANS.

DATE OF SURVEY OCTOBER 2000.

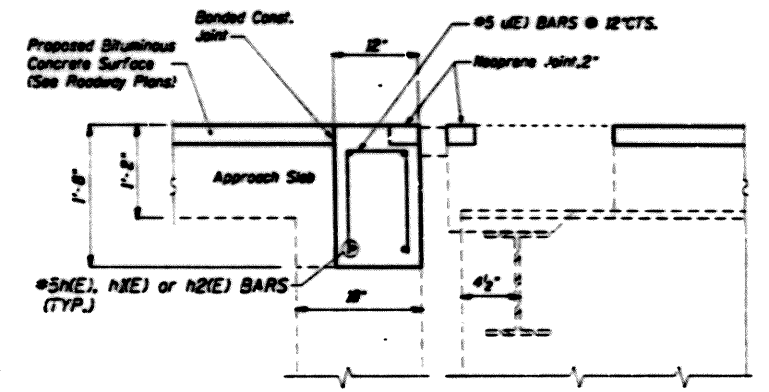
THE CONTRACTOR SHALL GRIND OFF THE EXISTING CONCRETE PATCHES. THIS IS INCLUDED IN THE COST OF 'BITUMINOUS CONCRETE REMOVAL (DECK)'.



EXISTING DETAIL "A"
Dashed Area Indicates Removal



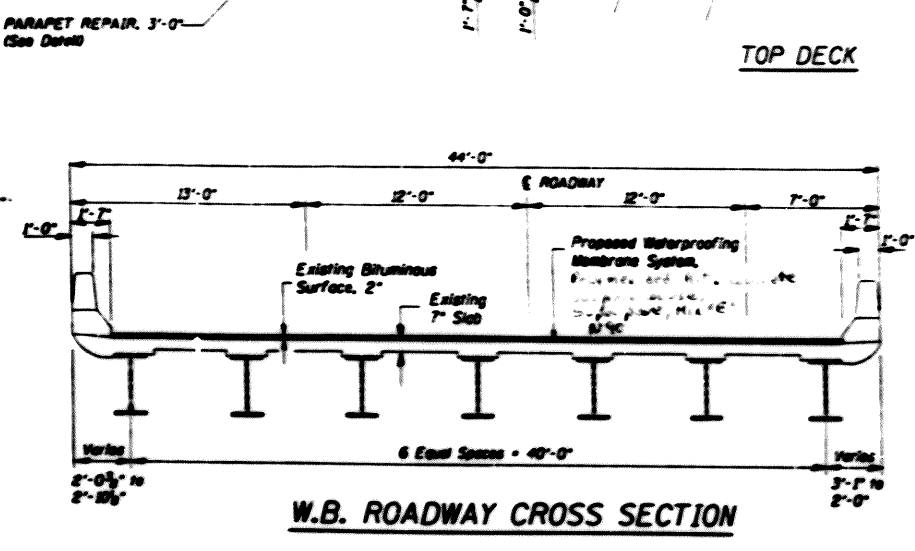
EXISTING ABUTMENT JOINT (DETAIL "B")
Dashed Area Indicates Removal



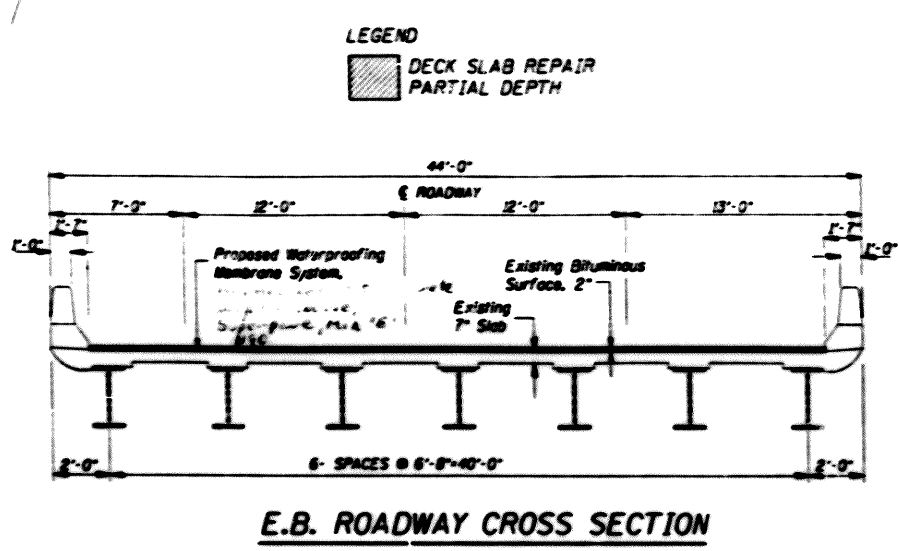
PROPOSED DETAIL "B"

TOTAL BILL OF MATERIALS - BRIDGE

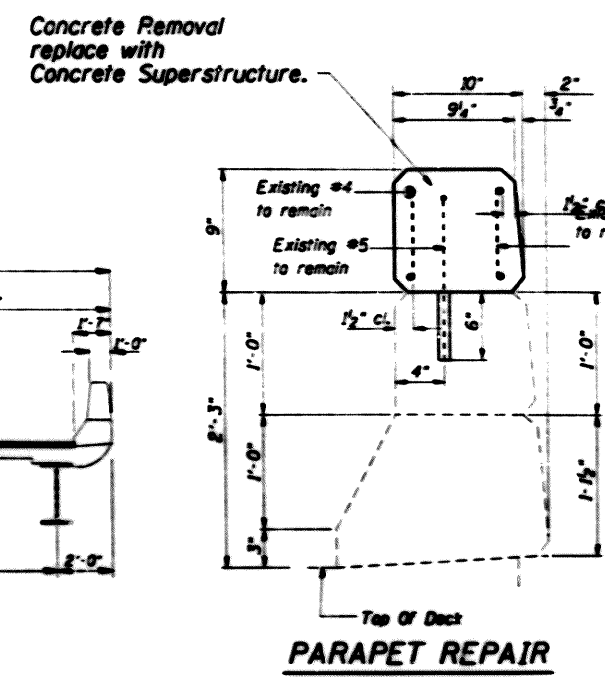
Bar	No.	Size	Length	Shape	UNIT	QUANTITY	
N(E)	4	#5	1'-9"	—	Pound	180	
N(E)	4	#5	7'-9"	—	Cu. Yds.	1.5	
N2(E)	4	#5	13'-9"	—	Cu. Yds.	1.5	
U(E)	27	#5	2'-11"	U	Sq. Yd.	8.2	
ITEM						UNIT	QUANTITY
Reinforcement Bars (Epoxy Coated)						Pound	180
Concrete Superstructure						Cu. Yds.	1.5
Concrete Removal						Cu. Yds.	1.5
Deck Slab Repair (Partial)						Sq. Yd.	8.2
Bituminous Concrete Removal (Deck)						Sq. Yd.	127
Polymerized Bituminous Concrete Surface Course, Superpave, Mix "E", N90						Ton	126
Waterproofing Membrane System						Sq. Yd.	127
Membrane Joint, 2"						Foot	30



W.B. ROADWAY CROSS SECTION



E.B. ROADWAY CROSS SECTION



PARAPET REPAIR

LEGEND
 DECK SLAB REPAIR PARTIAL DEPTH

REVISIONS	
NO.	DATE

ILLINOIS DEPARTMENT OF TRANSPORTATION
INTERSTATE RTE. 80 OVER SOUTH BOUND MEADOW AVENUE
S.N. 099-0053 (WESTBOUND)
S.N. 099-0052 (EASTBOUND)
 SCALE: NONE
 DATE: 11/15/01
 DRAWN BY: MVT
 CHECKED BY: TJS

S.E.C.T.I.O.N.	C.O.U.N.T.Y.	S.P.E.C.I.F.I.C.	D.W.G. NO.
80	WILL	82	56A
STA. TO STA.			
SHEET NO.			

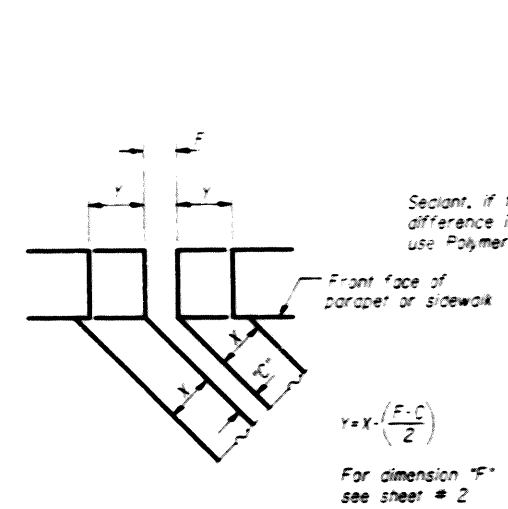
• 99 (L, 2, 3, 4 & 4-1WS-7)

Joint Size	"C" at 50°F	"D" at 50°F
2"	2"	1 1/2" Min.
2 1/2"	2 1/2"	1 3/4" Min.
4"	3"	2 1/2" Min.

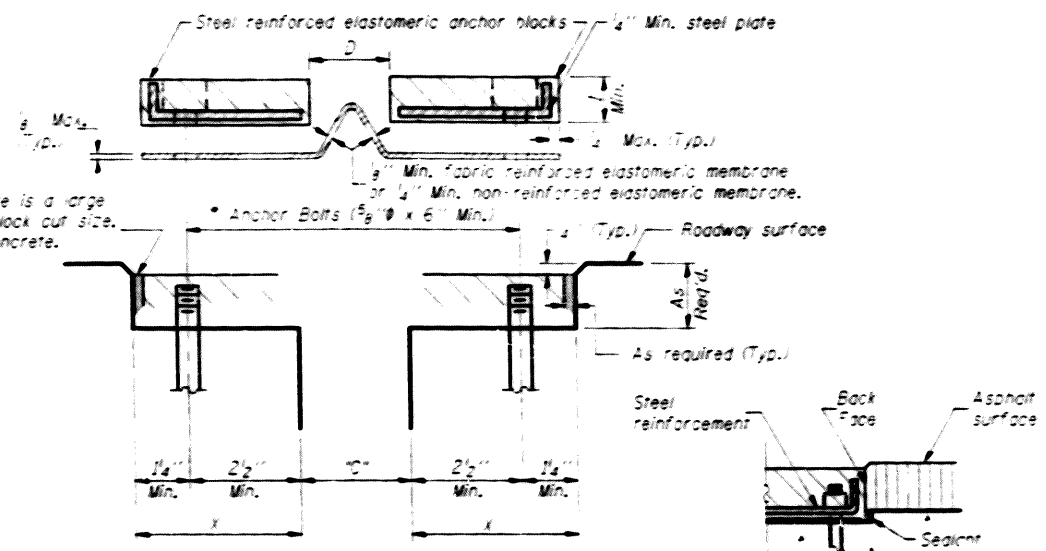
INSTALLATION NOTES

- Install continuous seal in roadway, parapet, curb, and sidewalk.
- Install anchor blocks as indicated.

NOTE A: Maximum spacing of anchor bolts shall be 12" centers.



FORMING BLOCKOUT SKETCH



CROSS SECTION

ANCHOR BLOCK WITH ASPHALT SURFACE

GENERAL NOTES

Continuous Seal Neoprene Expansion Joint shall consist of molded anchor blocks of elastomer and steel, field assembled over continuous lengths of elastomeric membrane.

The elastomeric membrane shall be pre-molded with a single or a double upward convolution that will have a "memory" to return to its molded position upon joint closure.

The convolution length shall be such that the extended length will not be greater than the manufactured length when the joint is fully expanded in its design range and will not protrude above the anchor blocks when the joint is fully compressed.

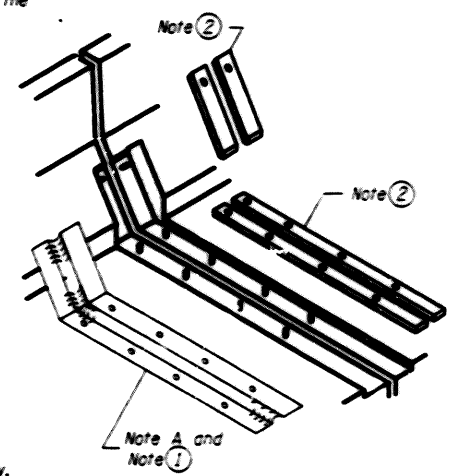
The parapet and roadway membrane shall be made continuous by an approved vulcanizing process. Lapping will not be permitted.

Epoxy grout 5/8" threaded studs in accordance with article 584 of the Standard Specifications to miss existing studs.

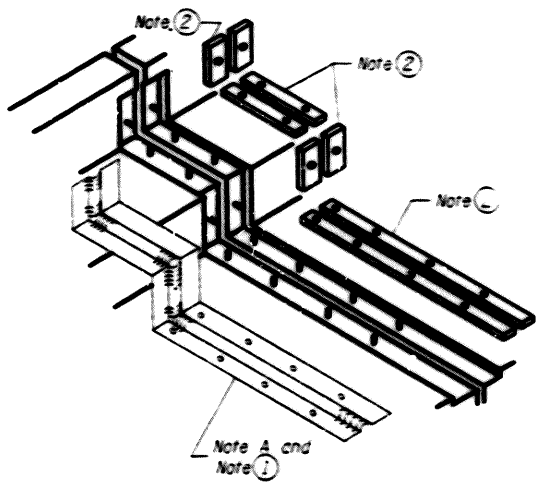
Removal of the existing neoprene expansion joint and studs is included in the cost of "NEOPRENE EXPANSION JOINT" of the size specified.

SKEW LIMITATIONS

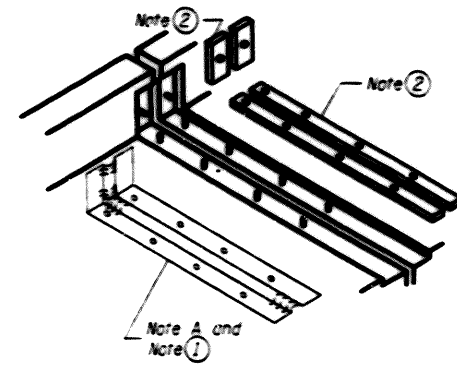
The details of the anchor blocks and the elastomeric membrane in the parapet, as shown, are for up to 50° skews. For skews greater than 50°, the anchor blocks and the elastomeric membrane, installed according to dimension "D", might require modifications to insure a minimum clearance of 1/2" from centerline of anchor studs to edge of parapet opening. The anchor blocks and the elastomeric membrane shall also be installed to the top of the parapet with the anchor studs spaced at 12" cts.



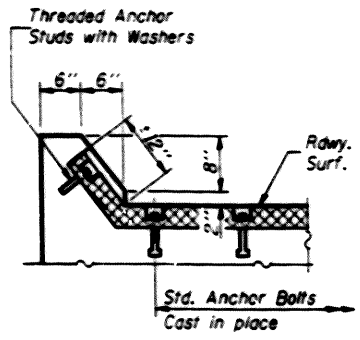
AT PARAPET



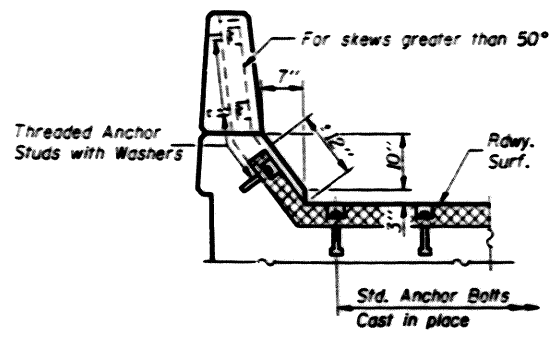
AT SIDEWALK OR MEDIAN



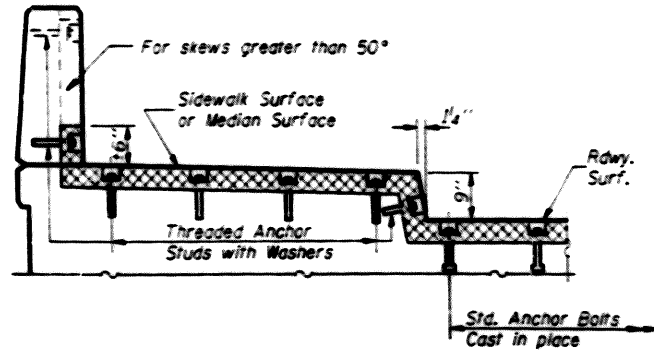
AT WALL



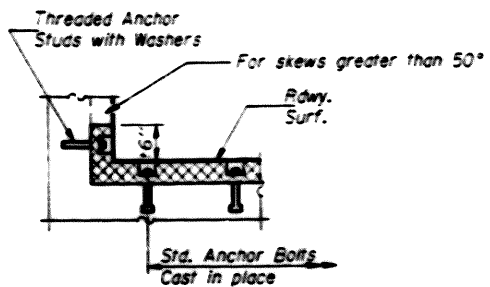
AT CURB



AT PARAPET



AT SIDEWALK OR MEDIAN TYPICAL END TREATMENTS



AT WALL

REVISIONS	
NO.	DATE

ILLINOIS DEPARTMENT OF TRANSPORTATION

INTERSTATE RTE. 80 OVER SOUTH BOUND MEADOW AVENUE
S.N. 099-0053 (WESTBOUND)
S.N. 099-0052 (EASTBOUND)

SCALE: NONE
DRAWN BY: CAD
CHECKED BY: [Signature]