

025

F.A.P. RTE.	SECTION	COUNTY	TOTAL SHEETS	SHEET NO.
309	115, 16RS-3	WHITESIDE	84	1
		ILLINOIS	CONTRACT NO. 64M42	

STATE OF ILLINOIS
DEPARTMENT OF TRANSPORTATION
**PROPOSED
HIGHWAY PLANS**

FOR INDEX OF SHEETS, SEE SHEET NO. 2

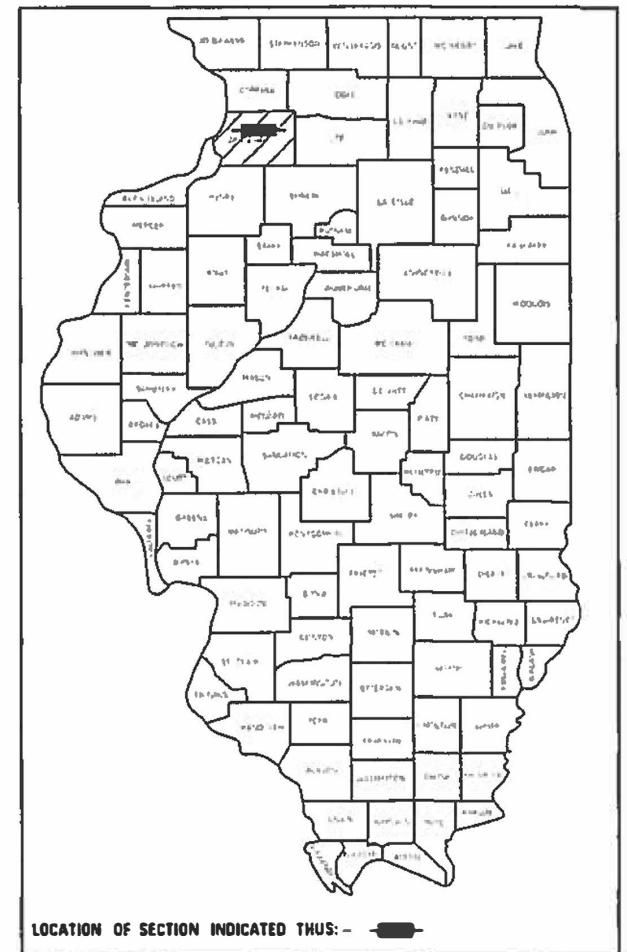
HIGHWAY CLASSIFICATION

F.A.P. ROUTE 309 (US 30)
CLASSIFICATION: US ROUTE
ADT: 6,800 (2017)
DESIGN SPEED: 55 MPH
POSTED SPEED: 55 MPH

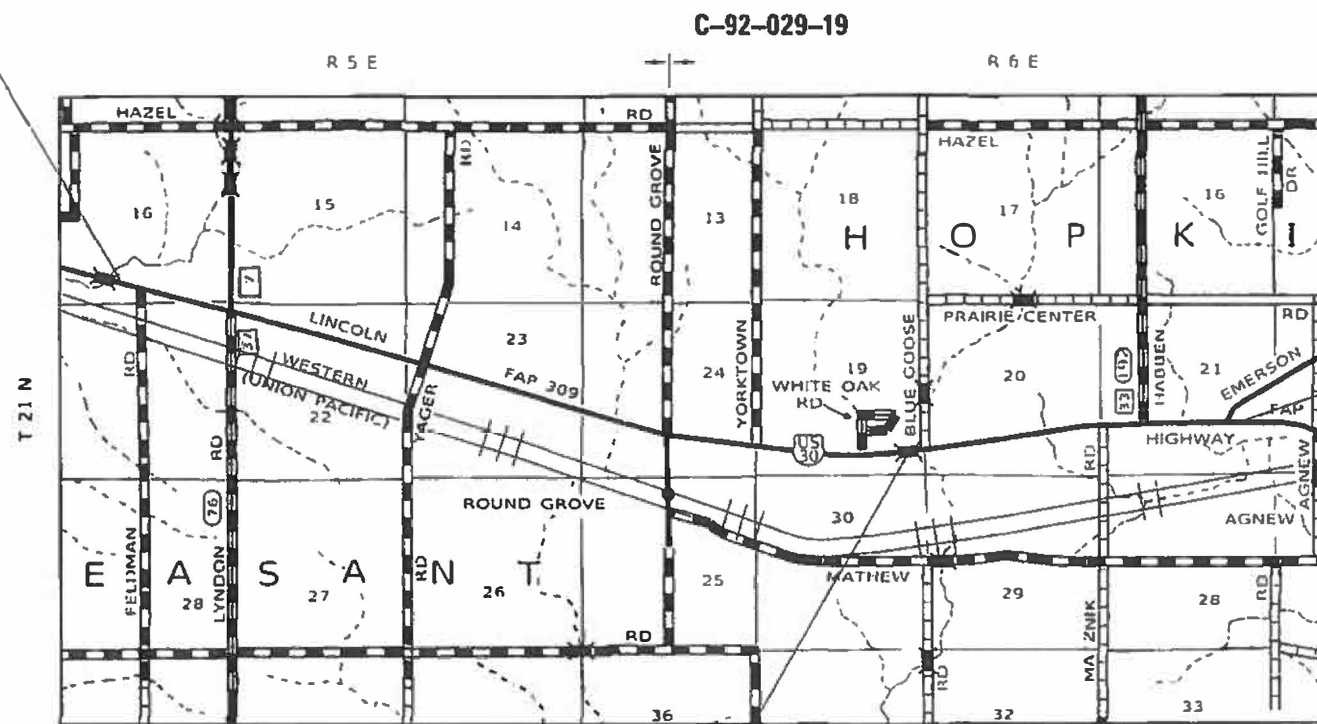
PV = 5,800
MU = 700
SU = 300

F.A.P. ROUTE 309 (US 30)
SECTION (15,16)RS-3
PROJECT NHPP-VLCJ (170)
RESURFACING
WHITESIDE COUNTY
FRENCH CREEK EAST OF MORRISON
TO EMERSON ROAD

D-92-053-17

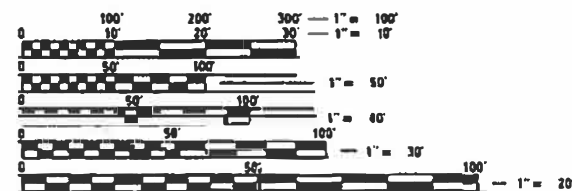


PROJECT BEGINS
STA 756+15



PROJECT ENDS
STA 1107+00

MT. PLEASANT TOWNSHIP: SECTIONS 16, 21, 22, & 24
HOPKINS TOWNSHIP: SECTIONS 19, 20, & 21



FULL SIZE PLANS HAVE BEEN PREPARED USING STANDARD ENGINEERING SCALES. REDUCED SIZED PLANS WILL NOT CONFORM TO STANDARD SCALES. IN MAKING MEASUREMENTS ON REDUCED PLANS, THE ABOVE SCALES MAY BE USED.

J.U.L.I.E.
JOINT UTILITY LOCATION INFORMATION FOR EXCAVATORS
1-800-892-0123
OR 811

PROJECT ENGINEER: FAITH DUNCAN
SQUAD LEADER: ROBERT BARTON
PROJECT MANAGER: PATRICK COSTELLO (815) 284-5902
EMAIL: Patrick.Costello@Illinois.gov
CONTRACT NO. 64M42

PAVING GAP
STA 1009+25 - STA 1010+93

GROSS LENGTH = 35,085 FT. = 6.64 MILE
PAVING GAPS = 168 FT. = 0.03 MILE
NET LENGTH = 34,917 FT. = 6.61 MILE

STATE OF ILLINOIS
DEPARTMENT OF TRANSPORTATION

SUBMITTED January 31st 2020

March 20 2020 REGIONAL ENGINEER

March 20 2020 ENGINEER OF DESIGN AND ENVIRONMENT

March 20 2020 DIRECTOR OF HIGHWAYS PROJECT IMPLEMENTATION 13

PRINTED BY THE AUTHORITY
OF THE STATE OF ILLINOIS

INDEX OF SHEETS

1 COVER SHEET
 2 INDEX OF SHEETS AND STANDARDS
 3- 8 SUMMARY OF QUANTITIES
 9- 11 GENERAL NOTES
 12- 17 TYPICAL SECTIONS
 18- 28 SCHEDULE OF QUANTITIES
 29 EARTHWORK SCHEDULE
 30- 33 HMA SCHEDULE
 34- 36 HORIZONTAL AND VERTICAL CONTROL
 37- 41 PAVEMENT MARKING DETAILS
 42- 43 GUARDRAIL DETAILS
 44- 48 DRIVEWAY DETAILS
 49 CATCH BASINS OR INLETS TO BE ADJUSTED OR RECONSTRUCTED (17.4)
 49 DETAIL OF HOT-MIX ASPHALT SHOULDER AT GUARDRAIL (23.4)
 49 PAVEMENT PATCHING FOR HOT-MIX ASPHALT SURFACED PAVEMENT (32.4)
 49 DELINEATOR AND POST ORIENTATION (37.4)
 50 SUBGRADE REPLACEMENT (97.4)
 50 FRAME AND GRATE FOR INLETS, SPECIAL (13.2c)
 51 STANDARD INLET FOR CURB & GUTTER (21.2)
 51 HOT-MIX ASPHALT APPROACHES AND MAILBOX RETURNS FOR TWO LIFTS (3P) RESURFACING PROJECTS (47.2)
 52 SAFETY EDGE (49.2)
 53 MAILBOX TURNOUT IN CURB AND GUTTER SECTION (3.1)
 54 STANDARD OUTLET FOR CURB & GUTTER (5.1)
 55 HOT-MIX ASPHALT APPROACHES AND MAILBOX RETURNS (20.1)
 56- 59 WORK ZONE SIGN DETAILS (34.1)
 60- 62 TYPICAL PAVEMENT MARKINGS (41.1)
 63- 66 REMOVE AND RE-ERECT STEEL PLATE BEAM GUARDRAIL (53.1)
 67- 84 CROSS SECTIONS

HIGHWAY STANDARDS

000001-07 STANDARD SYMBOLS, ABBREVIATIONS AND PATTERNS
 001001-02 AREAS OF REINFORCEMENT BARS
 001006 DECIMAL OF AN INCH AND OF A FOOT
 280001-07 TEMPORARY EROSION CONTROL SYSTEMS
 406201-01 MAILBOX TURNOUT
~~420701-03 PAVEMENT WELDED WIRE REINFORCEMENT~~
 442201-09 CLASS C & D PATCHES
 482011-03 HMA, SHLD, STRIPS/SHLDS, WITH RESURFACING OR WIDENING AND RESURFACING PROJECTS
 542411 SLOPED METAL END SECTIONS FOR PIPE CULVERTS 15" THRU 60" DIA
 604001-05 FRAME AND LIDS TYPE 1
 606001-07 CONCRETE CURB TYPE B AND COMBINATION CONCRETE CURB AND GUTTER
 630001-12 STEEL PLATE BEAM GUARDRAIL
 630301-09 SHOULDER WIDENING FOR TYPE 1 (SPECIAL) GUARDRAIL TERMINALS
 631031-16 TRAFFIC BARRIER TERMINAL, TYPE 6
 635001-02 DELINEATORS
 665001-02 WOVEN WIRE FENCE
 701001-02 OFF-RD OPERATIONS, 2L, 2W, MORE THAN 15' (4.5M) AWAY
 701006-05 OFF-RD OPERATIONS, 2L, 2W, 15' (4.5M) TO 24' (600MM) FROM PAVEMENT EDGE
 701011-04 OFF-RD MOVING OPERATIONS, 2L, 2W, DAY ONLY
 701201-05 LANE CLOSURE, 2L, 2W, DAY ONLY, FOR SPEEDS ≥ 45 MPH MPH
 701301-04 LANE CLOSURE, 2L, 2W, SHORT TIME OPERATIONS
 701306-04 LANE CLOSURE, 2L, 2W, SLOW MOVING OPERATIONS DAY ONLY, FOR SPEEDS ≥ 45 MPH
 701311-03 LANE CLOSURE, 2L, 2W, MOVING OPERATIONS DAY ONLY
 701336-07 LANE CLOSURE, 2L, 2W, WORK AREAS IN SERIES, FOR SPEEDS ≥ 45 MPH MPH
 701901-08 TRAFFIC CONTROL DEVICES
 720001-01 SIGN PANEL MOUNTING DETAILS
 720006-04 SIGN PANEL ERECTION DETAILS
 725001-01 OBJECT AND TERMINAL MARKERS
 780001-05 TYPICAL PAVEMENT MARKINGS
 781001-04 TYPICAL APPLICATIONS RAISED REFLECTIVE PAVEMENT MARKERS
 782006-01 GUARDRAIL AND BARRIER WALL REFLECTOR MOUNTING DETAILS

MODEL: Default
 FILE NAME: p:\planningroom.dct\illinois.gov\PHWDOT\Documents\DOT Offices\District 2\Projects\64M42\Program Development\Studies & Plans\Design\CADD\CAD\Sheets\02_64M42_sht-cover.dgn

USER NAME = costellopp	DESIGNED -	REVISED -
	DRAWN -	REVISED -
PLOT SCALE = 100.0000' / in.	CHECKED -	REVISED -
PLOT DATE = Jan-31-2020 05:14:10 PM	DATE -	REVISED -

**STATE OF ILLINOIS
 DEPARTMENT OF TRANSPORTATION**

INDEX OF SHEETS & HIGHWAY STANDARDS

SCALE: SHEET 1 OF 1 SHEETS STA. TO STA.

F.A.P. RTE.	SECTION	COUNTY	TOTAL SHEETS	SHEET NO.
309	(15, 16)RS-3	WHITESIDE	84	2
			CONTRACT NO. 64M42	
ILLINOIS FED. AID PROJECT				

SUMMARY OF QUANTITIES

CODE NO.	ITEM	UNIT	TOTAL QUANTITY	CONSTRUCTION CODE	
				80% FED	
				20% STATE ROADWAY	
				0005	RURAL
40600990	TEMPORARY RAMP	SQ YD	597	597	
40601005	HOT-MIX ASPHALT REPLACEMENT OVER PATCHES	TON	417	417	△ ₂
40602970	HOT-MIX ASPHALT BINDER COURSE, IL-9.5FG, N70	TON	8,990	8,990	
40604052	HOT-MIX ASPHALT SURFACE COURSE, IL-9.5, MIX "C", N70	TON	412	412	
40604062	HOT-MIX ASPHALT SURFACE COURSE, IL-9.5, MIX "D", N70	TON	9,141	9,141	
40800050	INCIDENTAL HOT-MIX ASPHALT SURFACING	TON	1,498	1,498	
44000160	HOT-MIX ASPHALT SURFACE REMOVAL, 2 3/4"	SQ YD	113,362	113,362	
44000400	GUTTER REMOVAL	FOOT	881	881	
44000500	COMBINATION CURB AND GUTTER REMOVAL	FOOT	127	127	△ ₂
44002220	HOT-MIX ASPHALT REMOVAL OVER PATCHES, 5"	SQ YD	1,488	1,488	
44200050	WELDED WIRE REINFORCEMENT	SQ YD	347	347	△₂
44201031	CLASS B PATCHES, TYPE II, 15 INCH	SQ YD	779	779	
44201037	CLASS B PATCHES, TYPE IV, 15 INCH	SQ YD	447	447	
44201294	CLASS B PATCH - EXPANSION JOINT	FOOT	520	520	

* SPECIALTY ITEM
NON-PARTICIPATING (100% STATE)

MODEL: Default
 FILE NAME: P:\planningroom.dct\illinois.gov\PHWDOT\Documents\DOT Offices\District 2\Projects\64M42\Program Development\Studies & Plans\Design\CADD\CAD\Sheets\02-64M42-sh-500-Import.dgn

USER NAME = costellojg	DESIGNED - _____	REVISED - _____
	DRAWN - _____	REVISED - _____
PLOT SCALE = 100.0000' / in.	CHECKED - _____	REVISED - _____
PLOT DATE = Jan-31-2020 05:55:28 PM	DATE - _____	REVISED - _____

**STATE OF ILLINOIS
DEPARTMENT OF TRANSPORTATION**

SUMMARY OF QUANTITIES

SCALE: _____ SHEET 2 OF 6 SHEETS STA. _____ TO STA. _____

F.A.P. RTE.	SECTION	COUNTY	TOTAL SHEETS	SHEET NO.
309	(15,16)RS-3	WHITESIDE	84	4
CONTRACT NO. 64M42				

SUMMARY OF QUANTITIES

CODE NO.	ITEM	UNIT	TOTAL QUANTITY	CONSTRUCTION CODE	
				80% FED 20% STATE ROADWAY 0005	RURAL
44201299	DOWEL BARS 1 1/2"	EACH	1,584	1,584	2
44201827	CLASS D PATCHES, TYPE II, 15 INCH	SQ YD	779	779	
44213200	SAW CUTS	FOOT	4,138	4,138	2
44201831	CLASS D PATCHES, TYPE III, 15 INCH	SQ YD	35	35	
44213204	TIE BARS 3/4"	EACH	68	68	2
44201833	CLASS D PATCHES, TYPE IV, 15 INCH	SQ YD	447	447	
44300200	STRIP REFLECTIVE CRACK CONTROL TREATMENT	FOOT	6,000	6,000	2
48102100	AGGREGATE WEDGE SHOULDER, TYPE B	TON	4,314	4,314	
48203023	HOT-MIX ASPHALT SHOULDERS, 6 1/2"	SQ YD	522	522	
542D0223	PIPE CULVERTS, CLASS D, TYPE 1 18"	FOOT	49	49	
54260518	SLOPED METAL END SECTION, STANDARD 542411, 18", 1:6	EACH	2	2	
60255800	MANHOLES TO BE ADJUSTED WITH NEW TYPE 1 FRAME, CLOSED LID	EACH	2	2	
60600095	CLASS SI CONCRETE (OUTLET)	CU YD	25	25	
60602500	CONCRETE GUTTER, TYPE A	FOOT	99	99	
60608582	COMBINATION CONCRETE CURB AND GUTTER, TYPE M-4.24	FOOT	685	685	
* 63000001	STEEL PLATE BEAM GUARDRAIL, TYPE A, 6 FOOT POSTS	FOOT	187.5	187.5	
* 63100167	TRAFFIC BARRIER TERMINAL, TYPE 1 (SPECIAL) TANGENT	EACH	4	4	

* SPECIALTY ITEM
NON-PARTICIPATING (100% STATE)

MDEE:\Default\ppl\gpl\room.dwg Illinois.gov\PWD\DOT\Documents\DOT_Offices\District_2\Projects\64M42\Program_DevelopmentStudies & Plans\Design\CADD\CAD\Drawings\02-64M42-ct-500_insepar.dgn
 FILE NAME: p...

USER NAME = costellojg	DESIGNED - _____	REVISED - _____
DRAWN - _____	REVISIONS - _____	
PLOT SCALE = 100.0000' / in.	CHECKED - _____	REVISED - _____
PLOT DATE = Jan-31-2020 05:55:52 PM	DATE - _____	REVISED - _____

**STATE OF ILLINOIS
DEPARTMENT OF TRANSPORTATION**

SUMMARY OF QUANTITIES

SCALE: _____ SHEET 3 OF 6 SHEETS STA. _____ TO STA. _____

F.A.P. RTE.	SECTION	COUNTY	TOTAL SHEETS	SHEET NO.
309	(15,16)RS-3	WHITESIDE	84	5
			CONTRACT NO. 64M42	

ILLINOIS FED. AID PROJECT

GENERAL NOTES

All Borrow/Waste/Use sites must be approved by the Department prior to removing any material from the project or initiating any earthmoving activities, including temporary stockpiling outside the limits of construction.

The final top 4 inches of soil in any right-of-way area disturbed by the Contractor must be capable of supporting vegetation. The soil must be from the A horizon (zero to 2' deep) of soil profiles of local soils. The cost of this work shall be included in the unit prices bid and no additional compensation will be allowed.

The Contractor shall seed all disturbed areas within the project limits. Seeding Class 4 or 2A shall be used, except in front of properties where the grass will be mowed, then use Seeding, Class 1A. Class 2A shall be used on front slopes and ditch bottoms. Class 4 shall be used behind Type A gutter, on all backslopes and areas behind the backslope, and beyond the toe of front slope on fill sections without ditches.

When laying out for patching, the minimum distance between new patches (saw cut to saw cut) shall be 15 feet. When patch spacing is less than 15 feet, the pavement between patches shall also be removed and replaced.

All mandatory joint sealing for Class A, Class B, and Class B (Hinge Jointed) patches as shown on the plans will not be measured for payment. Optional sawing of the joint for the sealant reservoir will not be measured for payment.

All patching shall be completed prior to milling.

For all concrete patching that will not be resurfaced, the concrete shall be struck off flush with the existing pavement surface at each end of the patch.

The Engineer reserves the right to check all patches for smoothness by the use of a 10' rolling straight edge set to a 3/16" tolerance in the wheel paths. Any patch areas higher than 3/16" must be ground smooth with an approved grinding device consisting of multiple saws. The use of bushhammer or other impact devices will not be permitted. Any patch with depressions greater than 3/16" shall be repaired in a manner approved by the Engineer.

The mandatory saw cuts for pavement patching are:

Class B Patch: Cut two transverse saw cuts outlining the patch and one transverse pressure relief saw cut. The longitudinal edges of the patch shall be cut full depth. When the patch is adjacent to a pcc shoulder, two saw cuts along the shoulder will be required.

The mandatory saw cuts will be paid for at the contract unit price per Foot for SAW CUTS.

The existing hot-mix asphalt on private and commercial entrances shall be bladed off or milled and disposed of outside the project limits. This could be the entire entrance or tapered at the end depending on if the mainline is resurfaced or milled and resurfaced. The cost of the blading, milling, rolling, and disposal is included in the contract unit price for INCIDENTAL HOT-MIX ASPHALT SURFACING.

The drop off that occurs at entrance edges as a result of resurfacing of the entrance shall be corrected using aggregate shoulder material. This work shall be paid for by the TON for Aggregate Shoulders of the type specified in the plans.

Milling machines on this project shall be capable of removing a layer of bituminous a minimum 6' wide and 1½ inches in depth in a single pass.

The following Mixture Requirements are applicable for this project:

Location(s):	Mainline		Shoulder	
	Surface	Binder	Surface	Binder
Mixture Use(s):	Surface	Binder	Surface	Binder
PG:	PG 64-22	PG 64-22	PG 64-22	PG 64-22
Design Air Voids:	4.0 @ N70	4.0 @ N70	4.0 @ N70	3.0 @ N70
Mixture Composition (Mixture Gradation):	IL 9.5	IL 9.5 FG	IL 9.5	IL 19.0 & IL 9.5 FG
Friction Aggregate:	D	N/A	C	N/A
Mixture Weight:	112 lb/sy/in	N/A	112 lb/sy/in	N/A
Quality Management Program:	QCP	QCP	QC/QA	QC/QA
Sublot Size:	1000	1000	N/A	N/A
Number of Roller Passes ¹⁾ :	N/A	N/A	N/A	N/A

1) When a number of roller passes is specified, the Contractor may opt to use intelligent compaction in lieu of density testing under the Quality Control for Performance (QCP) program.

The area to be tacked or primed shall be limited to that which can be covered with HMA on the next day's production, but no more than five days in advance of the placement of the HMA, unless approved by the Engineer.

Reflective Crack Control shall be placed on the existing surface prior to any resurfacing, unless pavement is milled then it will be placed on the binder course.

To help avoid excess drop offs at the edge of pavement, aggregate shoulder material of the type specified in the plans shall be placed prior to any bituminous material. The aggregate material shall be placed flush with the existing pavement or at the elevation of any proposed milling. At no time shall the aggregate shoulder material be higher than the existing edge of pavement. This work shall be paid for by the ton for AGGREGATE SHOULDERS of type specified.

If, during the grinding or resurfacing operations, the existing mailboxes become a hindrance, the Contractor shall be required to carefully remove and reinstall the mailboxes as directed by the Engineer. This work shall be included in the contract unit price for the INCIDENTAL HOT-MIX ASPHALT SURFACING.

The excavated materials from earth excavation widening, grading and shaping ditches, and excavating and grading shoulders shall be used to build up the shoulder throughout the job to conform with the typical sections and shoulder widening for terminals as shown on the plans.

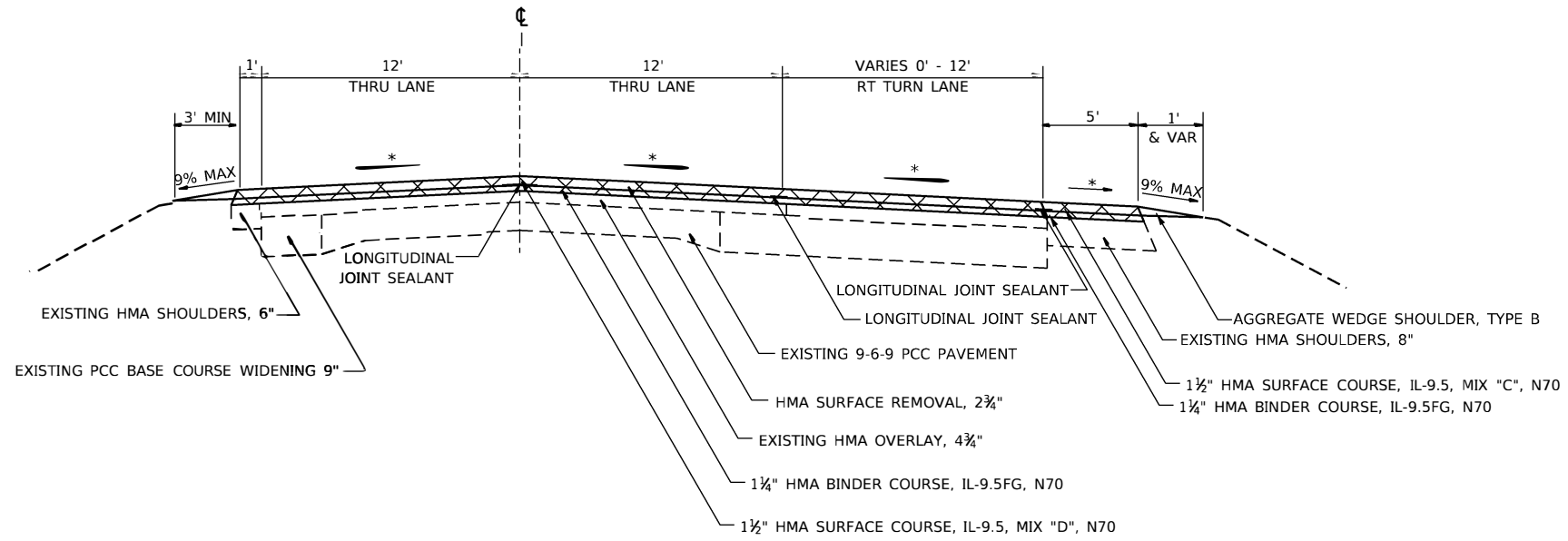
Embankment quantities for the construction of the Traffic Barrier Terminals as shown in the plans are included in quantities for Earth Excavation.

The Contractor shall supply the Resident Engineer with the manufacturer's installation requirements for the type of Steel Plate Beam Guardrail Terminal Type 1 Special (Tangent) or Steel Plate Beam Guardrail Terminal Type I Special (Flared).

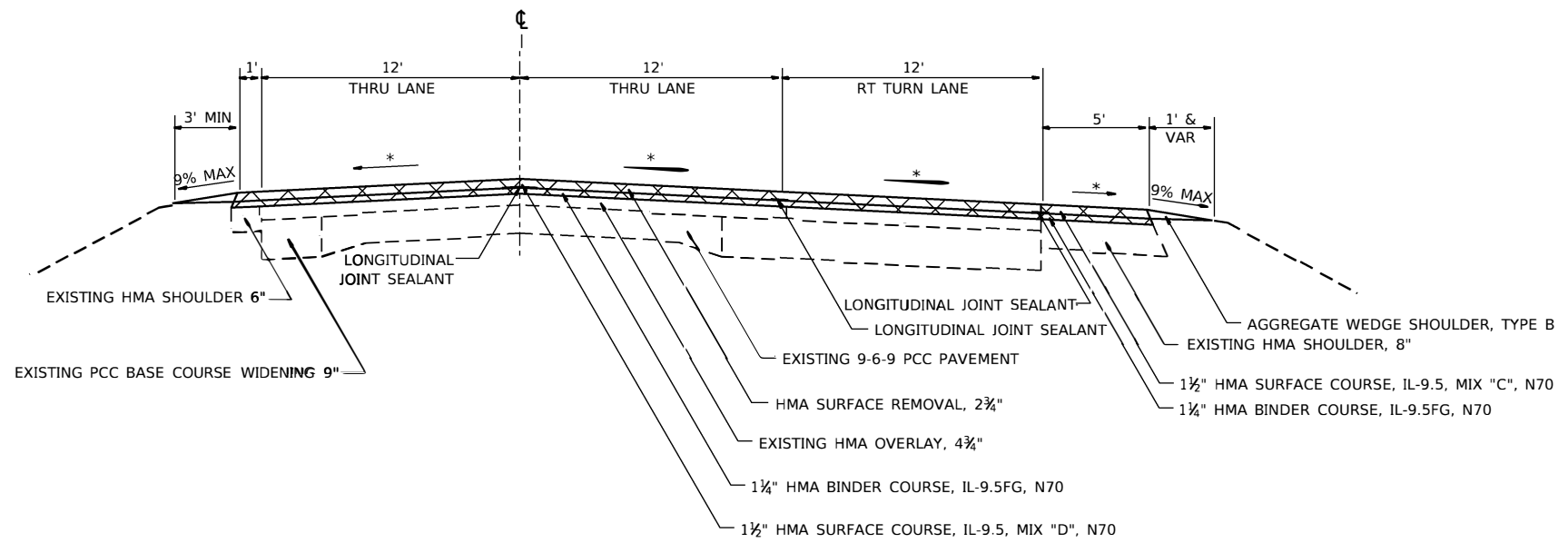
One 16d galvanized nail shall be used to toe nail the wood block out to the wood post on all Traffic Barrier Terminal Type I Specials.

FILE NAME = 64M42.GN.DOCX	USER NAME =	DESIGNED - Engineering Systems	REVISED -	STATE OF ILLINOIS DEPARTMENT OF TRANSPORTATION	GENERAL NOTES	ROUTE	SECTION	COUNTY	TOTAL SHEETS	SHEET NO.
	PLOT SCALE =	DRAWN -	REVISED -			FAP 309 (US 30)	(15,16)RS-3	Whiteside	84	9
	PLOT DATE = 4/9/2020 7:51 AM	CHECKED -	REVISED -			CONTRACT NO. 64M42				
	DATE - 11/13/2019 2:50 PM	REVISED -	SCALE:			SHEET NO.	OF	SHEETS	STA.	TO STA.

U.S. RTE 30
STA 793+70 - STA 795+68



U.S. RTE 30
STA 795+68 - STA 798+20



112#/IN/SQ YD
* MATCH EXISTING CROSS SLOPE(MINIMUM 1/8" /FT)

NOTE: STA 796+83 - STA 798+20 LYNDON RD INTERSECTION

USER NAME = costello	DESIGNED - PGC	REVISED -
	DRAWN - PGC	REVISED -
PLOT SCALE = 100 0000' / in	CHECKED -	REVISED -
PLOT DATE = Jan-31-2020 05:06:06 PM	DATE - 5/22/19	REVISED -

STATE OF ILLINOIS
DEPARTMENT OF TRANSPORTATION

US 30
TYPICAL SECTIONS

SCALE: SHEET 2 OF 6 SHEETS STA. TO STA.

F.A.P. RTE.	SECTION	COUNTY	TOTAL SHEETS	SHEET NO.
309	(15, 16)RS-3	WHITESIDE	84	13
CONTRACT NO. 64M42				

MODEL: Default
FILE NAME: \\highways.dot\illinois.gov\PM\DOT\Documents\DOT Office\District 2\Projects\64M42\Program Development\Studies & Plans\Design\CADD\CAD\Sheets\02_64M42_sht.typical.dgn

SCHEDULE OF QUANTITIES

20100110 TREE REMOVAL (6 TO 15 UNITS DIAMETER)

UNIT	LOCATION	OFFSET	REMARKS
6.78	STA 766+79	40.23' RT	
7.00	STA 767+14	38.54' RT	
13.59	STA 954+32	40.77' RT	
7.86	STA 954+45	32.61' RT	
7.32	STA 955+78	33.05' RT	
9.84	STA 955+98	36.43' RT	
8.50	STA 965+98	39.44' RT	
8.82	STA 966+17	38.13' RT	
70	TOTAL		

20100210 TREE REMOVAL (OVER 15 UNITS DIAMETER)

UNIT	LOCATION	OFFSET	REMARKS
15.76	STA 956+65	34.15' RT	
16	TOTAL		

28000305 TEMPORARY DITCH CHECKS

FOOT	LOCATION	OFFSET	REMARKS
8.90	STA 1040+50	34.18' RT	LT EDGE OF DEVICE
9.13	STA 1044+00	33.36' RT	LT EDGE OF DEVICE
18	TOTAL		

28100107 STONE RIPRAP CLASS A4

SQ YD	LOCATION	OFFSET	REMARKS
350.47	STA 1007+90 - 1008+15	34' & 34'	PLACE AROUND EXISTING STRUCTURE
350	TOTAL		

44000400 GUTTER REMOVAL

FT	LOCATION	OFFSET	REMARKS
315	STA 953+72 - 956+87	RT	
391	STA 964+83 - 968+74	LT	
85	STA 1006+51 - 1007+36	LT	
12	STA 1007+26 - 1007+38	RT	
78	STA 1013+08 - 1013+86	RT	
881	TOTAL		

MODEL: Default
 FILE: h:\mfc_p\pub\barroom.dwg
 PROJECT: R:\DOT\Documents\DOT_Offices\District 2\Projects\64M42\Program_Development\Studies & Plans\Design\CADD\CAD\Drawings\20100110-Schedule_Import.dgn
 PLOT DATE = Apr-09-2020 04:01:44 PM

USER NAME = costelloj	DESIGNED - _____	REVISED - _____
	DRAWN - _____	REVISED - _____
PLOT SCALE = 100,0000' / in.	CHECKED - _____	REVISED - _____
	DATE - _____	REVISED - _____

**STATE OF ILLINOIS
DEPARTMENT OF TRANSPORTATION**

SCHEDULE OF QUANTITIES

SCALE: _____ SHEET 1 OF 11 SHEETS STA. _____ TO STA. _____

F.A.P. RTE.	SECTION	COUNTY	TOTAL SHEETS	SHEET NO.
309	(15,16)RS-3	WHITESIDE	84	18
CONTRACT NO. 64M42				
ILLINOIS FED. AID PROJECT				

SCHEDULE OF QUANTITIES

44000500 COMBINATION CURB & GUTTER REMOVAL

FT	LOCATION	OFFSET	REMARKS
74	STA 887+73 - 888+42	LT	
53	STA 899+58 - 890+07	LT	
128	TOTAL		

54260518 SLOPED METAL END SECTIONS, STANDARD 542411, 18", 1:6

EACH	LOCATION	OFFSET	REMARKS
1	STA 1007+29	34' RT	
1	STA 1007+87	39' RT	
2	TOTAL		

542D0223 PIPE CULVERT, CLASS D, TYPE 1 18"

FT	LOCATION	OFFSET	REMARKS
49	STA 1007+29 - 1007+87	RT	
49	TOTAL		

60255800 MANHOLES TO BE ADJUSTED WITH NEW TYPE 1 FRAME, CLOSED LID

EACH	LOCATION	OFFSET	REMARKS
1	STA 1003+05	18.35' RT	
1	STA 1006+85	21.04' RT	
2	TOTAL		

60600095 CLASS SI CONCRETE (OUTLET)

CU YD	LOCATION	OFFSET	REMARKS
5.2	STA 887+08 - 887+72	LT	
5.1	STA 953+00 - 953+63	RT	
5.3	STA 964+60 - 965+24	LT	
4.2	STA 1007+49 - 1007+99	LT	
5.3	STA 1013+21 - 1013+86	RT	
25	TOTAL		

MODEL: Default
 FILE: h:\mfc_p\pub\planroom.dwg
 PROJECT: \P\DOT\Documents\DOT_Offices\District 2\Projects\64M42\Program_Development\Studies & Plans\Design\CADD\CAD\Drawings\02-64M42-sh-Schedule_quantities.dwg

USER NAME = costelloj PLOT SCALE = 100.0000' / in. PLOT DATE = Apr-09-2020 04:03:22 PM	DESIGNED - _____ DRAWN - _____ CHECKED - _____ DATE - _____	REVISED - _____ REVISED - _____ REVISED - _____ REVISED - _____	STATE OF ILLINOIS DEPARTMENT OF TRANSPORTATION	SCHEDULE OF QUANTITIES	F.A.P. RTE. = 309 SECTION = (15,16)RS-3 COUNTY = WHITESIDE TOTAL SHEETS = 84 SHEET NO. = 19 CONTRACT NO. 64M42	SCALE: _____ SHEET 2 OF 11 SHEETS STA. _____ TO STA. _____
--	--	--	---	-------------------------------	---	--

SCHEDULE OF QUANTITIES

60602500 CONCRETE GUTTER, TYPE A

FT	STA LOCATION	OFFSET	REMARKS
99	STA 1006+51 - 1007+49	LT	
99	TOTAL		

60608582 COMBINATION CONCRETE CURB & GUTTER, TYPE M-4.24

FT	LOCATION	OFFSET	REMARKS
304	STA 965+24 - 968+69	LT	
244	STA 953+63 - 956+87	RT	
73	STA 887+73 - 888+42	LT	
64	STA 899+59 - 890+19	LT	
685	TOTAL		

63000001 STEEL PLATE BEAM GUARDRAIL, TYPE A, 6 FOOT POSTS

FT	LOCATION	OFFSET	REMARKS
75.0	STA 1007+94 - 1008+69	LT	
62.5	STA 1011+53 - 1012+16	RT	
50.0	STA 1011+78 - 1012+28	LT	
187.5	TOTAL		

63100167 TRAFFIC BARRIER TERMINAL, TYPE 1 (SPECIAL) TANGENT

EACH	LOCATION	OFFSET	REMARKS
1	STA 1007+44 - 1007+94	LT	
1	STA 1007+81 - 1008+31	RT	
1	STA 1012+28 - 1012+78	LT	
1	STA 1012+16 - 1012+66	RT	
4	TOTAL		

63200310 GUARDRAIL REMOVAL

FT	LOCATION	OFFSET	REMARKS
44	STA 1008+25 - 1008+69	LT	
24	STA 1007+88 - 1008+31	RT	
44	STA 1011+54 - 1011+98	RT	
45	STA 1011+78 - 1012+23	LT	
157	TOTAL		

MODEL: Default
 FILE: h:\mfc_2\pub\planroom.dwg
 PROJECT: \pub\planroom.dwg
 PLOT DATE: Apr-09-2020 04:03:54 PM

USER NAME = costellojg DRAWN - _____ CHECKED - _____ DATE - _____	DESIGNED - _____ REVISIONS - _____ REVISIONS - _____ REVISIONS - _____	STATE OF ILLINOIS DEPARTMENT OF TRANSPORTATION	SCHEDULE OF QUANTITIES	F.A.P. RTE. _____ SECTION _____ (15,16)RS-3 _____ COUNTY WHITESIDE TOTAL SHEETS 84 SHEET NO. 20 CONTRACT NO. 64M42	SCALE: _____ SHEET 3 OF 11 SHEETS STA. _____ TO STA. _____ ILLINOIS FED. AID PROJECT
--	---	---	-------------------------------	---	---

SCHEDULE OF QUANTITIES

63301210 REMOVE AND REERECT STEEL PLATE BEAM GUADRRAIL, TYPE A

FT	LOCATION	OFFSET	REMARKS
100.0	STA 1008+31 - 1109+31	RT	
62.5	STA 1008+69 - 1009+31	LT	
87.5	STA 1010+90 - 1011+78	LT	
62.5	STA 1010+91 - 1011+54	RT	
312.5	TOTAL		

63302700 REMOVE AND REERECT TRAFFIC BARRIER TERMINALS, TYPE 6

EACH	LOCATION	OFFSET	REMARKS
1.0	STA 1009+31 - 1009+69	RT	
1.0	STA 1009+31 - 1009+69	LT	
1.0	STA 1010+53 - 1010+90	LT	
1.0	STA 1010+53 - 1010+91	RT	
4	TOTAL		

63500105 DELINEATORS

EACH	LOCATION	OFFSET	REMARKS
1	STA 1013+42	LT	TBT, TYPE 1 (SPECIAL) TANGENT
1	STA 1012+29	RT	TBT, TYPE 1 (SPECIAL) TANGENT
1	STA 1006+90	LT	TBT, TYPE 1 (SPECIAL) TANGENT
1	STA 1007+81	RT	TBT, TYPE 1 (SPECIAL) TANGENT
4	TOTAL		

66500105 WOVEN WIRE FENCE, 4'

FT	LOCATION	OFFSET	REMARKS
27	STA 1042+23 - 1042+51	68.90' - 68.41' RT	
27	TOTAL		

70300100 SHORT-TERM PAVEMENT MARKING

FT	LOCATION	OFFSET	REMARKS
8637	STA 756+15 - 1107+00		YELLOW CENTERLINE SKIPDASH
1153	STA 1088+37 - 1099+90		YELLOW CENTERLINE LINE EMERSON RD.
500	STA 1091+70 - 1096.70	LT	YELLOW OUTSIDE LINE EMERSON RD.
1654	STA 1091+71 - 1096.70	RT	YELLOW OUTSIDE LINE EMERSON RD.
307	STA 1100+92 - 1001+56		YELLOW OUTSIDE LINE EMERSON RD.

MODEL: Default
 FILE: h:\mfc_p\pub\hroom.d\illinois\p\WIDOT\Documents\DOT_Offices\District 2\Projects\64M42\Program_Development\Studies & Plans\Design\CADD\CAD\Sheets\02-64M42-sh-Schedule_Report.dgn

USER NAME = costelloj	DESIGNED - _____	REVISED - _____
	DRAWN - _____	REVISED - _____
PLOT SCALE = 100.0000' / in.	CHECKED - _____	REVISED - _____
PLOT DATE = Apr-09-2020 04:15:03 PM	DATE - _____	REVISED - _____

**STATE OF ILLINOIS
DEPARTMENT OF TRANSPORTATION**

SCHEDULE OF QUANTITIES

SCALE: _____ SHEET 4 OF 11 SHEETS STA. _____ TO STA. _____

F.A.P. RTE.	SECTION	COUNTY	TOTAL SHEETS	SHEET NO.
309	(15,16)RS-3	WHITESIDE	84	21
ILLINOIS FED. AID PROJECT			CONTRACT NO. 64M42	

SCHEDULE OF QUANTITIES

70300100 SHORT-TERM PAVEMENT MARKING

FT	LOCATION	OFFSET	REMARKS
121	STA 795+71 - 796+92	RT	WHITE LINE TURNBAY LYNDON RD.
124	STA 798+10 - 799+34	LT	WHITE LINE TURNBAY LYNDON RD.
411	STA 889+32 - 892+68	LT	WHITE LINE TURNBAY DUMP
113	STA 995+52 - 996+65	LT	WHITE LINE TURNBAY WHITE OAKS RD.
283	STA 1097+06 - 1099+90		WHITE LINE TURNBAY EMERSON RD.
110	STA 889+32 - 889+67	LT	WHITE ISLAND DUMP
260	STA 1099+85 - 1100+55	LT	WHITE ISLAND EMERSON RD.
192	STA 1100+63 - 1101+08	LT	WHITE ISLAND EMERSON RD.
13,866	TOTAL MILLING		
13,866	TOTAL BINDER		
13,866	TOTAL SURFACE		
41,597	TOTAL		

70300150 SHORT TERM PAVEMENT MARKING REMOVAL

SQ FT	LOCATION	OFFSET	REMARKS
8637	STA 756+15 - 1107+00		YELLOW CENTERLINE SKIPDASH
1153	STA 1088+37 - 1099+90		YELLOW CENTERLINE LINE EMERSON RD.
500	STA 1091+70 - 1096.70	LT	YELLOW OUTSIDE LINE EMERSON RD.
1654	STA 1091+71 - 1096.70	RT	YELLOW OUTSIDE LINE EMERSON RD.
307	STA 1100+92 - 1001+56		YELLOW OUTSIDE LINE EMERSON RD.
121	STA 795+71 - 796+92	RT	WHITE LINE TURNBAY LYNDON RD.
124	STA 798+10 - 799+34	LT	WHITE LINE TURNBAY LYNDON RD.
411	STA 889+32 - 892+68	LT	WHITE LINE TURNBAY DUMP
113	STA 995+52 - 996+65	LT	WHITE LINE TURNBAY WHITE OAKS RD.
283	STA 1097+06 - 1099+90		WHITE LINE TURNBAY EMERSON RD.
110	STA 889+32 - 889+67	LT	WHITE ISLAND DUMP
260	STA 1099+85 - 1100+55	LT	WHITE ISLAND EMERSON RD.
192	STA 1100+63 - 1101+08	LT	WHITE ISLAND EMERSON RD.
13,866	TOTAL		

72501000 TERMINAL MARKER - DIRECT APPLIED

EACH	LOCATION	OFFSET	REMARKS
1	STA 1006+69 - 1007+19	LT	
1	STA 1007+81 - 1008+31	RT	
1	STA 1011+79 - 1012+29	RT	
1	STA 1012+92 - 1013+41	LT	
4	TOTAL		

MODEL: Default
 FILE: h:\mfc_p\pub\planroom.dwg
 PROJECT: R:\DOT\Documents\DOT_Offices\11001\11001.dwg
 PROGRAM: Development\Studies & Plans\Design\CADD\CAD\Sheet\02-64M42-sh-Schedule.mpc
 PLOT DATE: Apr-09-2020 04:04:59 PM

USER NAME = costelloj DRAWN - _____ CHECKED - _____ DATE - _____	DESIGNED - _____ REVISIONS - _____ REVISIONS - _____ REVISIONS - _____	STATE OF ILLINOIS DEPARTMENT OF TRANSPORTATION	SCHEDULE OF QUANTITIES	F.A.P. RTE. _____ SECTION (15,16)RS-3 COUNTY WHITESIDE TOTAL SHEETS 84 SHEET NO. 22	SCALE: _____ SHEET 5 OF 11 SHEETS STA. _____ TO STA. _____ ILLINOIS FED. AID PROJECT
---	---	---	-------------------------------	---	---

SCHEDULE OF QUANTITIES

78000100 THERMOPLASTIC PAVEMENT MARKING - LETTERS AND SYMBOLS

SQ. FT.	LOCATION	OFFSET	REMARKS
47	STA 795+86 - 796+75	RT	3 WHITE ARROWS
47	STA 798+27 - 799+19	LT	3 WHITE ARROWS
62	STA 890+20 - 892+38	LT	4 WHITE ARROWS
47	STA 995+52 - 996+65	LT	3 WHITE ARROWS
62	STA 1097+20 - 1099+72	RT	4 WHITE ARROWS
265	TOTAL		

78000200 THERMOPLASTIC PAVEMENT MARKING - LINE 4"

FT	LOCATION	OFFSET	REMARKS
188	STA 756+15 - 757+09		YELLOW DOUBLE SOLID CENTERLINE
4,241	STA 757+09 - 926+72		YELLOW SKIP DASH
670	STA 926+72 - 932+08		EB NPZ SOLID LINE / WB SKIP DASH
884	STA 932+08 - 936+50		YELLOW DOUBLE SOLID CENTERLINE
1,034	STA 936+50 - 944+77		WB NPZ SOLID LINE / WB SKIP DASH
375	STA 944+77 - 959+78		YELLOW SKIP DASH
903	STA 959+78 - 967+00		EB NPZ SOLID LINE / WB SKIP DASH
103	STA 967+00 - 971+11		YELLOW SKIP DASH
679	STA 971+11 - 976+54		WB NPZ SOLID LINE / WB SKIP DASH
1,262	STA 976+54 - 989+16		YELLOW SKIP DASH
606	STA 989+16 - 994+01		EB NPZ SOLID LINE / WB SKIP DASH
878	STA 994+01 - 998+40		YELLOW DOUBLE SOLID CENTERLINE
1,160	STA 998+40 - 1007+68		WB NPZ SOLID LINE / WB SKIP DASH
77	STA 1007+68 - 1012+42		YELLOW SKIP DASH - OMIT 168' FOR BRIDGE
1,010	STA 1012+42 - 1020+50		EB NPZ SOLID LINE / WB SKIP DASH
1,124	STA 1020+51 - 1029+50		WB NPZ SOLID LINE / WB SKIP DASH
655	STA 1029+50 - 1036+05		YELLOW DOUBLE SOLID CENTERLINE
1,048	STA 1036+05 - 1044+43		WB NPZ SOLID LINE / WB SKIP DASH
1,014	STA 1044+43 - 1085+00		YELLOW SKIP DASH
421	STA 1085+00 - 1088+37		EB NPZ SOLID LINE / WB SKIP DASH
548	STA 1088+37 - 1091+11		YELLOW DOUBLE SOLID CENTERLINE
2188	STA 1091+11 - 1097+03		MEDIAN DOUBLE SOLID
576	STA 1097+03 - 1099+90		DOUBLE SOLID CENTERLINE
170	STA 1100+55 - 1101+00		EMERSON YELLOW DOUBLE SOLID CENTERLINE
1872	STA 1100+91 - 1105+79		MEDIAN DOUBLE SOLID
198	STA 1105+79 - 1106+76		YELLOW DOUBLE SOLID CENTERLINE
30	STA 1106+76 - 1107+00		WB NPZ SOLID LINE / WB SKIP DASH
69954	STA 756+15 - 1106+76	LT & RT	WHITE SOLID EDGE LINES OMIT 168' FOR BRIDGE
93,866	TOTAL		

MODEL: Default
 FILE: h:\mfc_2\pub\lancorn.dwg
 I:\links\gov\PI\DOT\Documents\DOT_Offices\lancorn_2\Projects\64M42\Program_Developments\Studies & Plans\Design\CADD\CAD\Drawings\2\Projects\64M42-sh-Schedule_Report.dgn

USER NAME = costelloj PLOT SCALE = 100.0000' / in. PLOT DATE = Apr-09-2020 04:06:47 PM	DESIGNED - _____ DRAWN - _____ CHECKED - _____ DATE - _____	REVISED - _____ REVISED - _____ REVISED - _____ REVISED - _____	STATE OF ILLINOIS DEPARTMENT OF TRANSPORTATION	SCHEDULE OF QUANTITIES SCALE: _____ SHEET 6 OF 11 SHEETS STA. _____ TO STA. _____	F.A.P. RTE. _____ SECTION (15,16)RS-3 COUNTY WHITESIDE TOTAL SHEETS 84 SHEET NO. 23 CONTRACT NO. 64M42 ILLINOIS FED. AID PROJECT
--	--	--	---	---	--

SCHEDULE OF QUANTITIES

78000500 THERMOPLASTIC PAVEMENT MARKING - LINE 8"

FT	LOCATION	OFFSET	REMARKS
121	STA 795+71 - 796+92		RT TURN LANE
124	STA 798+10 - 799+34		RT TURN LANE
446	STA 889+32 - 892+68		RT TURN LANE & PAINTED ISLAND
113	STA 995+52 - 996+65		RT TURN LANE
284	STA 1097+06 - 1099+90		LT TURN LANE
172	STA 1099+85 - 1100+55	LT	PAINTED ISLAND
128	STA 1100+63 - 1101+08	LT	PAINTED ISLAND
1,388	TOTAL		

78000600 THERMOPLASTIC PAVEMENT MARKING - LINE 12"

FT	LOCATION	OFFSET	REMARKS
159	STA 889+32 - 889+67	LT	WHITE PAINTED ISLAND STRIPES
150	STA 1091+71 - 1096+70	RT	YELLOW PAINTED ISLAND STRIPES
113	STA 1099+85 - 1100+55	LT	WHITE DIAGNAL STRIPES
189	STA 1100+63 - 1101+08	LT	WHITE DIAGNAL STRIPES
119	STA 1100+94 - 1104+85	RT	YELLOW PAINTED ISLAND STRIPES
730	TOTAL		

78000650 THERMOPLASTIC PAVEMENT MARKING - LINE 24"

FT	LOCATION	OFFSET	REMARKS
15	STA 797+76	RT	STOP BARS
15	STA 797+44	LT	STOP BARS
17	STA 1100+26	LT	STOP BARS
12	STA 1100+56	LT	STOP BARS
59	TOTAL		

78009004 MODIFIED URETHANE PAVEMENT MARKING- LINE 4"

FT	LOCATION	OFFSET	REMARKS
672	STA 1009+25 - 1010+93	LT & RT	WHITE SOLID EDGE LINE (2x)
84	STA 1009+25 - 1010+94		YELLOW SKIP DASH (2x)
756	TOTAL		

MODEL: Default
 FILE: h:\mfc_p\pub\planroom\dat\illinois.gov\PWIDOT\Documents\DOT_Offices\District_2\Projects\64M42\Program_Development\Studies & Plans\Design\CADD\CAD\Drawings\02-64M42-sh-Schedule_Report.dgn

USER NAME = costelloj DRAWN - _____ CHECKED - _____ DATE - _____	DESIGNED - _____ DRAWN - _____ CHECKED - _____ DATE - _____	REVISED - _____ REVISED - _____ REVISED - _____ REVISED - _____	STATE OF ILLINOIS DEPARTMENT OF TRANSPORTATION	SCHEDULE OF QUANTITIES	F.A.P. RTE. = 309 SECTION = (15,16)RS-3 COUNTY = WHITESIDE TOTAL SHEETS = 84 SHEET NO. = 24 CONTRACT NO. 64M42
SCALE: _____ SHEET 2 OF 11 SHEETS STA. _____ TO STA. _____				ILLINOIS FED. AID PROJECT	

SCHEDULE OF QUANTITIES

78100100 RAISED REFLECTIVE PAVEMENT MARKER

EACH	LOCATION	OFFSET	REMARKS
415	STA 756+15 - 1088+37		TWO-WAY AMBER MARKER CENTERLINE SKIPDASH
14	STA 795+71 - 799+34		ONE-WAY CRYSTAL MARKERS TURNBAYS
8	STA 889+32 - 892+68		ONE-WAY CRYSTAL MARKERS TURNBAYS
6	STA 995+64 - 996+65		ONE-WAY CRYSTAL MARKERS TURNBAY
78	STA 1088+37 - 1099+90		TWO-WAY AMBER MARKERS MEDIAN
15	STA 1097+06 - 1099+87		ONE-WAY CRYSTAL MARKERS TURNBAY

536 TOTAL

78200005 GUARDRAIL REFLECTORS, TYPE A

EACH	LOCATION	OFFSET	REMARKS
5.0	STA 1008+31 - 1109+69	RT	
5.0	STA 1008+87 - 1009+69	LT	
5.0	STA 1010+54 - 1011+79	LT	
5.0	STA 1010+54 - 1011+54	RT	

20 TOTAL

78200010 BARRIER WALL REFLECTORS, TYPE B

EACH	LOCATION	OFFSET	REMARKS
2	STA 1009+25 - 1010+93	LT	
2	STA 1009+25 - 1010+93	RT	

4 TOTAL

78300200 RAISED REFLECTIVE PAVEMENT MARKER REMOVAL

EACH	LOCATION	OFFSET	REMARKS
391	STA 756+15 - 1107+00		

391 TOTAL

X0301797 GATE REMOVAL

EACH	LOCATION	OFFSET	REMARKS
1.00	STA 1042+22	68.90' RT	
1.00	STA 1042+50	68.41' RT	

2 TOTAL

MODEL: Default
FILE: h:\mfc_p\pub\planroom.dwg
PROJECTS\64M42\Program_Development\Studies & Plans\Design\CADD\CAD\Drawings\02-64M42-sh-Schedule_Import.dgn

USER NAME = costelloj PLOT SCALE = 100.0000' / in. PLOT DATE = Apr-09-2020 04:08:26 PM	DESIGNED - _____ DRAWN - _____ CHECKED - _____ DATE - _____	REVISED - _____ REVISED - _____ REVISED - _____ REVISED - _____	STATE OF ILLINOIS DEPARTMENT OF TRANSPORTATION	SCHEDULE OF QUANTITIES	F.A.P. RTE. = _____ SECTION = (15,16)RS-3 COUNTY = WHITESIDE TOTAL SHEETS = 84 SHEET NO. = 25 CONTRACT NO. 64M42 ILLINOIS FED. AID PROJECT
SCALE: _____				SHEET 8 OF 11 SHEETS STA. _____ TO STA. _____	

SCHEDULE OF QUANTITIES

X0325936 SOLAR-POWERED FLASH/POST MOUNTED (YELLOW LED DISPLAY)

EACH	LOCATION	OFFSET	REMARKS
2	STA 790+25	30' LT	INTERSECTION AHEAD w/EXTRA REPLACEMENT QUANTITY
2	STA 803+75	30' RT	INTERSECTION AHEAD w/EXTRA REPLACEMENT QUANTITY
2	STA 1099+97	48' LT	STOP SIGN w/EXTRA REPLACEMENT QUANTITY
2	STA 1100+31	24 'LT	STOP SIGN w/EXTRA REPLACEMENT QUANTITY
8	TOTAL		

X5420624 PIPE CULVERT TO BE CLEANED 24"

FT	LOCATION	OFFSET	REMARKS
64	STA 857+37		WEST OF YAEGER RD.
64	TOTAL		

X6024503 INLET TO BE ADJUSTED WITH NEW FRAME AND GRATE (SPECIAL)

EACH	LOCATION	OFFSET	REMARKS
1	STA 1003+05	15.58' RT	
1	TOTAL		

X7830060 GROOVING FOR RECESSED PAVEMENT MARKING, LETTERS AND SYMBOLS

SQ FT	LOCATION	OFFSET	REMARKS
59	STA 795+71 - 796+92	RT	WHITE ARROWS
59	STA 798+10 - 799+34	LT	WHITE ARROWS
78	STA 889+32 - 892+68	LT	WHITE ARROWS
59	STA 995+52 - 996+65	LT	WHITE ARROWS
78	STA 1097+06 - 1099+90		WHITE ARROWS
333	TOTAL		

X7830070 GROOVING FOR RECESSED PAVEMENT MARKING 5"

FT	LOCATION	OFFSET	REMARKS
188	STA 756+15 - 757+09		YELLOW DOUBLE SOLID CENTERLINE
4,241	STA 757+09 - 926+72		YELLOW SKIP DASH
670	STA 926+72 - 932+08		EB NPZ SOLID LINE / WB SKIP DASH
884	STA 932+08 - 936+50		YELLOW DOUBLE SOLID CENTERLINE
1,034	STA 936+50 - 944+77		WB NPZ SOLID LINE / WB SKIP DASH
375	STA 944+77 - 959+78		YELLOW SKIP DASH
903	STA 959+78 - 967+00		EB NPZ SOLID LINE / WB SKIP DASH
103	STA 967+00 - 971+11		YELLOW SKIP DASH

MODEL: Default
 FILE: \\blm1c1-pub\blm1room\data\illinois.gov\PI\DOT\Documents\DOT_Offices\District 2\Projects\64M42\Program_Development\Studies & Plans\Design\CADD\CAD\Drawings\02-64M42-sh-Schedule_Import.dgn

USER NAME = costelloj DRAWN - _____ CHECKED - _____ DATE - _____	DESIGNED - _____ REVISIONS - _____ REVISIONS - _____ REVISIONS - _____	STATE OF ILLINOIS DEPARTMENT OF TRANSPORTATION	SCHEDULE OF QUANTITIES	F.A.P. RTE. = 309 SECTION = (15,16)RS-3 COUNTY = WHITESIDE TOTAL SHEETS = 84 SHEET NO. = 26 CONTRACT NO. 64M42	SCALE: _____ SHEET 9 OF 11 SHEETS STA. _____ TO STA. _____
---	---	---	-------------------------------	---	--

SCHEDULE OF QUANTITIES

X7830070 GROOVING FOR RECESSED PAVEMENT MARKING 5"

FT	LOCATION	OFFSET	REMARKS
679	STA 971+11 - 976+54		WB NPZ SOLID LINE / WB SKIP DASH
1,262	STA 976+54 - 989+16		YELLOW SKIP DASH
606	STA 989+16 - 994+01		EB NPZ SOLID LINE / WB SKIP DASH
878	STA 994+01 - 998+40		YELLOW DOUBLE SOLID CENTERLINE
1,160	STA 998+40 - 1007+68		WB NPZ SOLID LINE / WB SKIP DASH
77	STA 1007+68 - 1012+42		YELLOW SKIP DASH - OMIT 168' FOR BRIDGE
1,010	STA 1012+42 - 1020+50		EB NPZ SOLID LINE / WB SKIP DASH
1,124	STA 1020+51 - 1029+50		WB NPZ SOLID LINE / WB SKIP DASH
655	STA 1029+50 - 1036+05		YELLOW DOUBLE SOLID CENTERLINE
1,048	STA 1036+05 - 1044+43		WB NPZ SOLID LINE / WB SKIP DASH
1,014	STA 1044+43 - 1085+00		YELLOW SKIP DASH
421	STA 1085+00 - 1088+37		EB NPZ SOLID LINE / WB SKIP DASH
548	STA 1088+37 - 1091+11		YELLOW DOUBLE SOLID CENTERLINE
2188	STA 1091+11 - 1097+03		MEDIAN DOUBLE SOLID
576	STA 1097+03 - 1099+90		DOUBLE SOLID CENTERLINE
170	STA 1100+55 - 1101+00		EMERSON YELLOW DOUBLE SOLID CENTERLINE
1872	STA 1100+91 - 1105+79		MEDIAN DOUBLE SOLID
198	STA 1105+79 - 1106+76		YELLOW DOUBLE SOLID CENTERLINE
30	STA 1106+76 - 1107+00		WB NPZ SOLID LINE / WB SKIP DASH
69954	STA 756+15 - 1106+76	LT & RT	WHITE SOLID EDGE LINES OMIT 168' FOR BRIDGE
93,866	TOTAL		

X7830076 GROOVING FOR RECESSED PAVEMENT MARKING 9"

FT	LOCATION	OFFSET	REMARKS
121	STA 795+71 - 796+92		RT TURN LANE
124	STA 798+10 - 799+34		RT TURN LANE
446	STA 889+32 - 892+68		RT TURN LANE & PAINTED ISLAND
113	STA 995+52 - 996+65		RT TURN LANE
284	STA 1097+06 - 1099+90		LT TURN LANE
172	STA 1099+85 - 1100+55	LT	PAINTED ISLAND
128	STA 1100+63 - 1101+08	LT	PAINTED ISLAND
1,388	TOTAL		

MODEL: Default
 FILE: h:\mfc_p\pub\lanroom.dwg
 I:\links\gov\PI\DOT\Documents\DOT_Offices\District_2\Projects\64M42\Program_Development\Studies & Plans\Design\CADD\CAD\Sheets\02-64M42-sh-Schedule_Import.dgn

USER NAME = costelloj	DESIGNED - _____	REVISED - _____	STATE OF ILLINOIS DEPARTMENT OF TRANSPORTATION	SCHEDULE OF QUANTITIES		F.A.P. RTE. = 309	SECTION = (15,16)RS-3	COUNTY = WHITESIDE	TOTAL SHEETS = 84	SHEET NO. = 27
PLOT SCALE = 100,0000' / in.	DRAWN - _____	REVISED - _____		SCALE: _____	SHEET 10 OF 11 SHEETS	STA. _____ TO STA. _____	ILLINOIS FED. AID PROJECT		CONTRACT NO. 64M42	
PLOT DATE = Apr-09-2020 04:12:36 PM	CHECKED - _____	REVISED - _____								
	DATE - _____	REVISED - _____								

SCHEDULE OF QUANTITIES

X7830078 GROOVING FOR RECESSED PAVEMENT MARKING 13"

FT	LOCATION	OFFSET	REMARKS
159	STA 889+32 - 889+67	LT	WHITE PAINTED ISLAND STRIPES
150	STA 1091+71 - 1096+70	RT	YELLOW PAINTED ISLAND STRIPES
113	STA 1099+85 - 1100+55	LT	WHITE DIAGNAL STRIPES
189	STA 1100+63 - 1101+08	LT	WHITE DIAGNAL STRIPES
119	STA 1100+94 - 1104+85	RT	YELLOW PAINTED ISLAND STRIPES
730	TOTAL		

X7830090 GROOVING FOR RECESSED PAVEMENT MARKING 25"

FT	LOCATION	OFFSET	REMARKS
15	STA 797+76	RT	STOP BARS
15	STA 797+44	LT	STOP BARS
17	STA 1100+26	LT	STOP BARS
12	STA 1100+56	LT	STOP BARS
59	TOTAL		

XZ##### REMOVE & REFURBISH EXISTING GATES

L SUM	LOCATION	OFFSET	REMARKS
0.5	STA 1037+09	64.11' RT	
0.5	STA 1042+36	69.11' RT	
1	TOTAL		

MODEL: Default
 FILE: h:\mfc_p\pub\planroom\dat\illinois.gov\PWIDOT\Documents\DOT_Offices\District 2\Projects\64M42\program_Development\Studies & Plans\Design\CADD\CAD\Sheets\02-64M42-sht-Schedule_quant.rvt.dgn

USER NAME = costelloj	DESIGNED - _____	REVISED - _____	STATE OF ILLINOIS DEPARTMENT OF TRANSPORTATION	F.A.P. RTE. = 309	SECTION = (15,16)RS-3	COUNTY = WHITESIDE	TOTAL SHEETS = 84	SHEET NO. = 28	
PLOT SCALE = 100,0000' / in.	CHECKED - _____	REVISED - _____		SCALE: _____	SHEET 11 OF 11 SHEETS	STA. _____ TO STA. _____	CONTRACT NO. 64M42		
PLOT DATE = Apr-09-2020 04:15:57 PM	DATE - _____	REVISED - _____		ILLINOIS FED. AID PROJECT					
REVISIONS: _____ _____ _____									