

GENERAL NOTES

THE THICKNESS OF HMA SHOWN ON THE PLANS IS THE NOMINAL THICKNESS. DEVIATIONS FROM THE NOMINAL THICKNESS WILL BE PERMITTED WHEN SUCH DEVIATIONS OCCUR DUE TO IRREGULARITIES IN THE EXISTING SURFACE OR BASE ON WHICH THE HMA IS PLACED.

THE HMA SURFACE OF ALL MAILBOX TURNOUTS, PRIVATE ENTRANCES, COMMERCIAL ENTRANCES, AND SIDE ROADS SHALL BE MADE NEATLY, IN A WORKMANLIKE MANNER, AND SHALL ACCURATELY CONFORM TO THE SHAPES AND DIMENSIONS SHOWN ON THE PLAN DETAILS. IF REQUIRED BY THE ENGINEER, THE CONTRACTOR SHALL SAW CUT THE HMA SURFACE TO CONFORM TO THE SHAPES AND DIMENSIONS SHOWN ON THE PLAN DETAILS. THIS WORK WILL BE INCLUDED IN THE COST OF THE HMA SURFACE.

EXCEPT AS NOTED ON THE PLANS, PAVEMENT GRADES SHOWN ARE AT THE TOP OF PAVEMENT SURFACES.

BEFORE ORDERING PIPE CULVERTS OR PIPE DRAINS, THE CONTRACTOR SHALL CONSULT THE ENGINEER FOR EXACT LENGTHS.

THE ENGINEER WILL BE THE SOLE JUDGE CONCERNING CURING TIME FOR THE VARIOUS HMA LIFTS.

SEEDING WILL NOT BE PERMITTED AT ANY TIME WHEN THE GROUND IS FROZEN, WET, OR IN AN UNTILLABLE CONDITION. LOCATIONS TO BE SEEDED WILL BE DETERMINED BY THE ENGINEER.

ALL EXCAVATED MATERIAL, WHICH INCLUDES DIGGING OR GRADING OF ANY SOIL OR FILL MATERIAL, WITH THE EXCEPTION OF AGGREGATE FILLS, MUST BE INCORPORATED WITHIN THE IDOT RIGHT OF WAY DUE TO ENVIRONMENTAL DOCUMENTATION REQUIREMENTS UNLESS OTHERWISE STATED IN THE SPECIAL PROVISIONS OR PLANS.

ON EXISTING PAVEMENT WHICH MAY BE SUPERELEVATED, THE NEW HMA PAVEMENT SHALL BE BUILT WITH THE SAME SUPERELEVATION UNLESS NEW SUPERELEVATION RATES ARE GIVEN ON THE PLANS.

ALL ELEVATIONS REFERRING TO U.S.G.S. MEAN SEA LEVEL DATUM.

ANY REFERENCE TO A STANDARD IN THESE PLANS SHALL BE INTERPRETED TO MEAN THE EDITION AS INDICATED BY THE SUBNUMBER SHOWN IN THE LIST OF STANDARDS OR THE COPY INCLUDED IN THESE PLANS.

THE FOLLOWING RATES OF APPLICATION HAVE BEEN USED IN CALCULATING PLAN QUANTITIES:

GRANULAR MATERIALS	2.05	TONS / CU YD
HMA RESURFACING	112	LBS / SQ YD / IN
SHORT TERM PAVEMENT MARKING	10	FT /100 FT OF APPLICATION
MIX FOR CRACKS, JTS & FLGWYS	0.0003	TONS / SQ YD

ALL DAMAGE TO DEPARTMENT OWNED UNDERGROUND FACILITIES, CAUSED BY THE CONTRACTOR SHALL BE REPAIRED TO THE SATISFACTION OF THE DEPARTMENT AT THE CONTRACTOR'S EXPENSE. THIS SHALL INCLUDE ALL TEMPORARY REPAIRS REQUIRED TO KEEP THE FACILITY OPERATIONAL WHILE MATERIAL IS BEING OBTAINED TO MAKE PERMANENT REPAIRS. SPLICING OF ELECTRIC CABLE WILL NOT BE ALLOWED. ELECTRIC CABLE SHALL BE REPLACED FROM POLE TO POLE OR CONTROLLER.

MEMBERS OF JULIE KNOWN TO BE WITHIN THE LIMITS OF THE IMPROVEMENT ARE:

- * AT&T
- * COMED
- * AQUA IL
- * NICOR
- * FRONTIER
- * EASTERN ILLINI ELECTRIC CO-OP
- * COMCAST
- * CMS
- * KANKAKEE
- * KINDER MORGAN COCHIN PIPELINE
- * UNITI FIBER
- * METRO COMMUNICATIONS

THE CONTRACTOR SHALL CONTACT JULIE AT LEAST 48 HOURS PRIOR TO EXCAVATION OR DRAINAGE RELATED WORK TO DETERMINE WHICH UTILITIES ARE IN THE AREA.

COMMITMENTS

NO COMMITMENTS

LIST OF ILLINOIS DOT HIGHWAY STANDARDS

000001-07	STANDARD SYMBOLS, ABBREVIATIONS AND PATTERNS
001006	DECIMAL OF AN INCH AND OF A FOOT
442101-09	CLASS B PATCHES
542011-02	CONCRETE END SECTIONS FOR ELLIPTICAL PIPE CULVERTS 15" (375mm) THRU 72" (1800 mm) EQUIVALENT DIAMETER
542311-07	TRAVERSABLE PIPE GRATE FOR CONCRETE END SECTION
542401-03	METAL FLARED END SECTION FOR PIPE CULVERTS
630001-12	STEEL PLATE BEAM GUARDRAIL
630201-07	PCC/HMA STABILIZATION AT STEEL PLATE BEAM GUARDRAIL
630301-09	SHOULDER WIDENING FOR TYPE 1 (SPECIAL) GUARDRAIL TERMINALS
631032-09	TRAFFIC BARRIER TERMINAL TYPE 6A
642006	SHOULDER RUMBLE STRIPS, 8 INCH
667101-02	PERMANENT SURVEY MARKERS
701001-02	OFF-ROAD OPERATIONS 2L, 2W, MORE THAN 15' (4.5 m) AWAY
701006-05	OFF-ROAD OPERATIONS 2L, 2W, 15' (4.5 m) TO 24" (600 mm) FROM PAVEMENT EDGE
701011-04	OFF-ROAD MOVING OPERATIONS 2L, 2W, DAY ONLY
701101-05	OFF-ROAD OPERATIONS, MULTILANE, 15' (4.5 m) TO 24" (600 mm) FROM PAVEMENT EDGE
701201-05	LANE CLOSURE, 2L, 2W, DAY ONLY, FOR SPEEDS ≥ 45 MPH
701301-04	LANE CLOSURE, 2L, 2W, SHORT TIME OPERATIONS
701306-04	LANE CLOSURE, 2L, 2W, SLOW MOVING OPERATIONS DAY ONLY, FOR SPEEDS ≥ 45 MPH
701311-03	LANE CLOSURE, 2L, 2W, MOVING OPERATIONS - DAY ONLY
701501-06	URBAN LANE CLOSURE, 2L, 2W, UNDIVIDED
701606-10	URBAN LANE CLOSURE, MULTILANE, 2W WITH MOUNTABLE MEDIAN
701701-10	URBAN LANE CLOSURE, MULTILANE INTERSECTION
701901-08	TRAFFIC CONTROL DEVICES
725001-01	OBJECT AND TERMINAL MARKERS
780001-05	TYPICAL PAVEMENT MARKINGS
781001-04	TYPICAL APPLICATIONS RAISED REFLECTIVE PAVEMENT MARKERS
782006-01	GUARDRAIL AND BARRIER WALL REFLECTOR MOUNTING DETAILS
886001-01	DETECTOR LOOP INSTALLATIONS
886006-01	TYPICAL LAYOUT FOR DETECTION LOOPS
BLR 26-3	STEEL PLATE BEAM GUARDRAIL 29" (731mm) HEIGHT
BLR 27-1	TRAFFIC BARRIER TERMINAL TYPE 5A



STATE OF ILLINOIS
DEPARTMENT OF TRANSPORTATION
DISTRICT THREE
AS BUILT INFORMATION

SUPERVISING CONSTRUCTION FIELD ENGINEER

RESIDENT ENGINEER / TECHNICIAN

START & END DATES
OF CONSTRUCTION:

INSPECTORS:

STATE OF ILLINOIS
DEPARTMENT OF TRANSPORTATION
DISTRICT THREE

PREPARED BY: *Tom Banil*
DISTRICT STUDIES & PLANS ENGINEER

DATE: 2-7-2020

EXAMINED BY: *Kyle Videman*
DISTRICT CONSTRUCTION ENGINEER

Michael A. Stet
DISTRICT MATERIALS ENGINEER

Tom Banil
DISTRICT OPERATIONS ENGINEER

MODEL: SMODEL.NAMES
FILE NAME: c:\pwworking\dot\calderon\10877210\266875-shi-cover.dgn

USER NAME = calderon	DESIGNED -	REVISED -
PLOT SCALE = 100.0000' / in.	DRAWN -	REVISED -
PLOT DATE = 2/6/2020	CHECKED -	REVISED -
	DATE -	REVISED -

STATE OF ILLINOIS
DEPARTMENT OF TRANSPORTATION

GENERAL NOTES

SCALE: SHEET OF SHEETS STA. TO STA.

F.A.P. RTE.	138 RS-4 & 559 RSM	KANKAKEE COUNTY 49	TOTAL SHEETS	SHEET NO.
84C		CONTRACT NO. 66B75		
ILLINOIS FED. AID PROJECT				

MODEL: 440001.DWG
 FILE: NAME: C:\p\work\p\mid\calderon\440001.dwg

* SPECIALTY ITEM

CODE NO.	ITEM	UNIT	TOTAL QUANTITY	CONSTRUCTION CODE		
				STP-URB KANKAKEE ROADWAY	STP-RUR KANKAKEE ROADWAY	STP-RUR IROQUOIS ROADWAY
				0005	0005	0005
				URBAN	RURAL	RURAL
20200100	EARTH EXCAVATION	CU YD	90		15	75
20800150	TRENCH BACKFILL	CU YD	6	6		
25100630	EROSION CONTROL BLANKET	SQ YD	822	222	378	222
28100107	STONE RIPRAP, CLASS A4	SQ YD	65		25	40
28200200	FILTER FABRIC	SQ YD	65		25	40
40600290	BITUMINOUS MATERIALS (TACK COAT)	POUND	167969	26104	38248	103617
40600400	MIXTURE FOR CRACKS, JOINTS, AND FLANGEWAYS	TON	71.9	10.3	16.4	45.2
40600990	TEMPORARY RAMP	SQ YD	2389	519	791	1079
40602985	HOT-MIX ASPHALT BINDER COURSE, 1L-9.5, N70	TON	26728	3832	6109	16787
40604062	HOT-MIX ASPHALT SURFACE COURSE, 1L-9.5, MIX "D", N70	TON	23427	3353	5345	14729
40800050	INCIDENTAL HOT-MIX ASPHALT SURFACING	TON	1536	487	468	581
44000100	PAVEMENT REMOVAL	SQ YD	30			30
44000164	HOT-MIX ASPHALT SURFACE REMOVAL, 3 3/4"	SQ YD	240887	36460	54543	149884
44201063	CLASS B PATCHES, TYPE 11, 18 INCH	SQ YD	20	20		

USER NAME = calderoni	DESIGNED -	REVISED -
	DRAWN -	REVISED -
PLOT SCALE = 100.0000' / in.	CHECKED -	REVISED -
PLOT DATE = 2/7/2020	DATE -	REVISED -

**STATE OF ILLINOIS
 DEPARTMENT OF TRANSPORTATION**

SUMMARY OF QUANTITIES

SCALE: SHEET OF SHEETS STA. TO STA.

F.A.P. RTE.	SECTION	COUNTY	TOTAL SHEETS	SHEET NO.
840	138 RS-4 & 139 RS-6	KANK / IROQ	52	3
CONTRACT NO. 66B75				
ILLINOIS FED. AID PROJECT				

MODEL: 4400.DEL.NAMES
 FILE NAME: C:\p\work\p\mid\calderon\40382772\366B75-sh-500.dgn

STP FUNDS
80% FED-20% STATE

CONSTRUCTION CODE

CODE NO.	ITEM	UNIT	TOTAL QUANTITY	STP-URB KANKAKEE ROADWAY	STP-RUR KANKAKEE ROADWAY	STP-RUR IROQUOIS ROADWAY
				0005	0005	0005
				URBAN	RURAL	RURAL
44201299	DOWEL BARS 1 1/2"	EACH	40	40		
44213200	SAW CUTS	FOOT	94	94		
48102100	AGGREGATE WEDGE SHOULDER, TYPE B	TON	1266	500	766	
48203100	HOT-MIX ASPHALT SHOULDERS	TON	472	472		
542A5485	PIPE CULVERTS, CLASS A, TYPE 1 EQUIVALENT ROUND-SIZE 30"	FOOT	42	42		
542C0223	PIPE CULVERTS, CLASS C, TYPE 1 18"	FOOT	7			7
54248510	CONCRETE COLLAR	CU YD	0.2			0.2
54260315	TRAVERSABLE PIPE GRATE FOR CONCRETE END SECTION	FOOT	10	10		
54262718	METAL FLARED END SECTIONS 18"	EACH	1			1
54262724	METAL FLARED END SECTIONS 24"	EACH	2		2	
54263330	CONCRETE END SECTION, STANDARD 542011, 30", 1:3	EACH	2	2		
* 63000001	STEEL PLATE BEAM GUARDRAIL, TYPE A, 6 FOOT POSTS	FOOT	162.5		162.5	
* 63000003	STEEL PLATE BEAM GUARDRAIL, TYPE A, 9 FOOT POSTS	FOOT	825			825
* 63100087	TRAFFIC BARRIER TERMINAL, TYPE 6A	EACH	7			7

* SPECIALTY ITEM

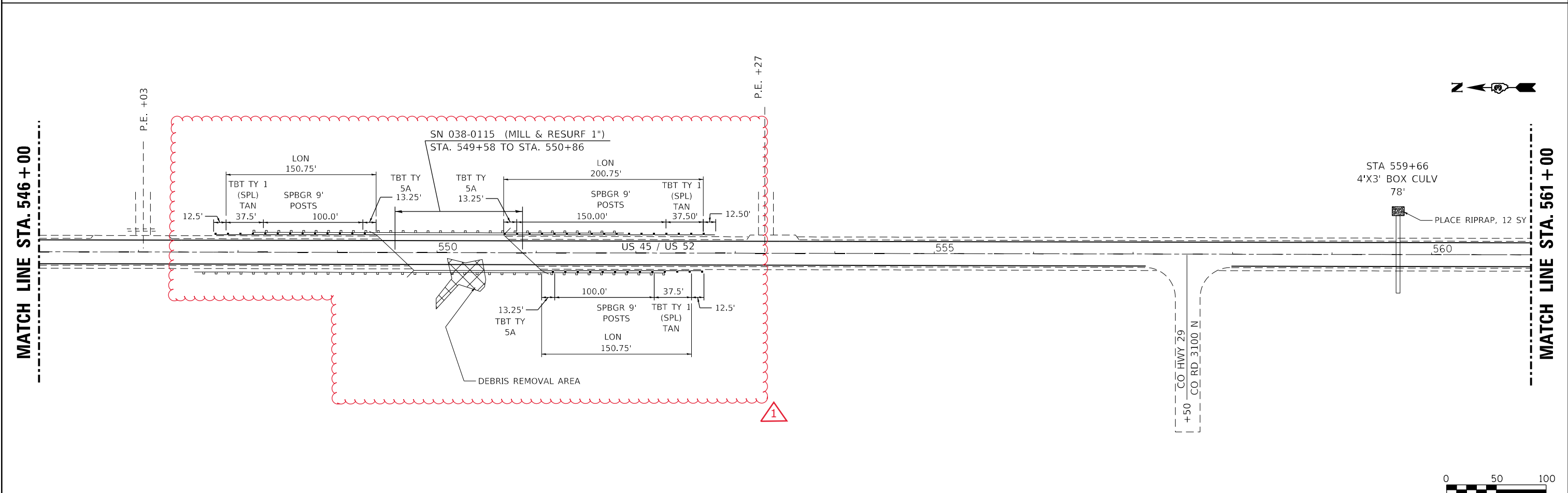
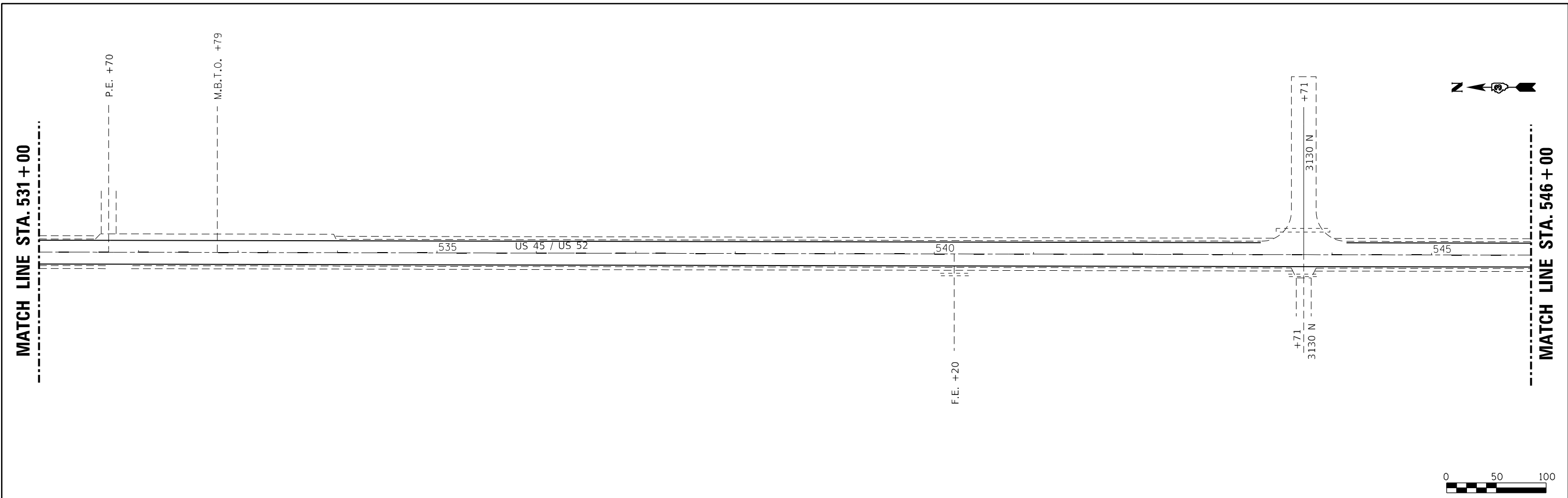
USER NAME = calderoni	DESIGNED -	REVISED -
PLOT SCALE = 100.0000' / in.	DRAWN -	REVISED -
PLOT DATE = 2/7/2020	CHECKED -	REVISED -
	DATE -	REVISED -

STATE OF ILLINOIS
DEPARTMENT OF TRANSPORTATION

SUMMARY OF QUANTITIES

SCALE: SHEET OF SHEETS STA. TO STA.

F.A.P. RTE.	SECTION	COUNTY	TOTAL SHEETS	SHEET NO.
840	138 RS-4 & 139 RS-6	KANK / IROQ	52	4
CONTRACT NO. 66B75			ILLINOIS FED. AID PROJECT	



FILE NAME =	USER NAME = calderon1	DESIGNED -	REVISED -
ca:\pwwork\pwwork\calderon1\d0282772\0366875-sh1-planviews.dgn		DRAWN -	REVISED -
PLOT SCALE = 100.000' / in.		CHECKED -	REVISED -
PLOT DATE = 4/7/2020		DATE -	REVISED -

**STATE OF ILLINOIS
DEPARTMENT OF TRANSPORTATION**

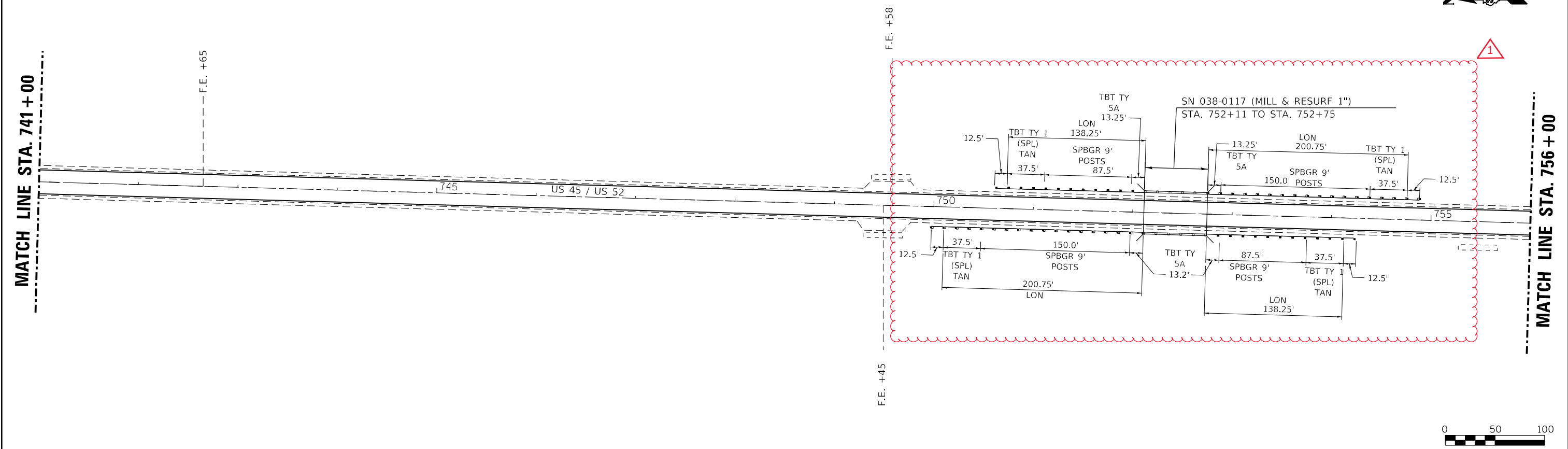
PLAN VIEWS

SCALE: 50 SHEET 15 OF 24 SHEETS STA. 531+00 TO STA. 561+00

F.A.P. RTE.	SECTION	COUNTY	TOTAL SHEETS	SHEET NO.
840	138 RS-4 & 139 RS-6	KANK/IROO	49	33
CONTRACT NO. 66875				
ILLINOIS FED. AID PROJECT				

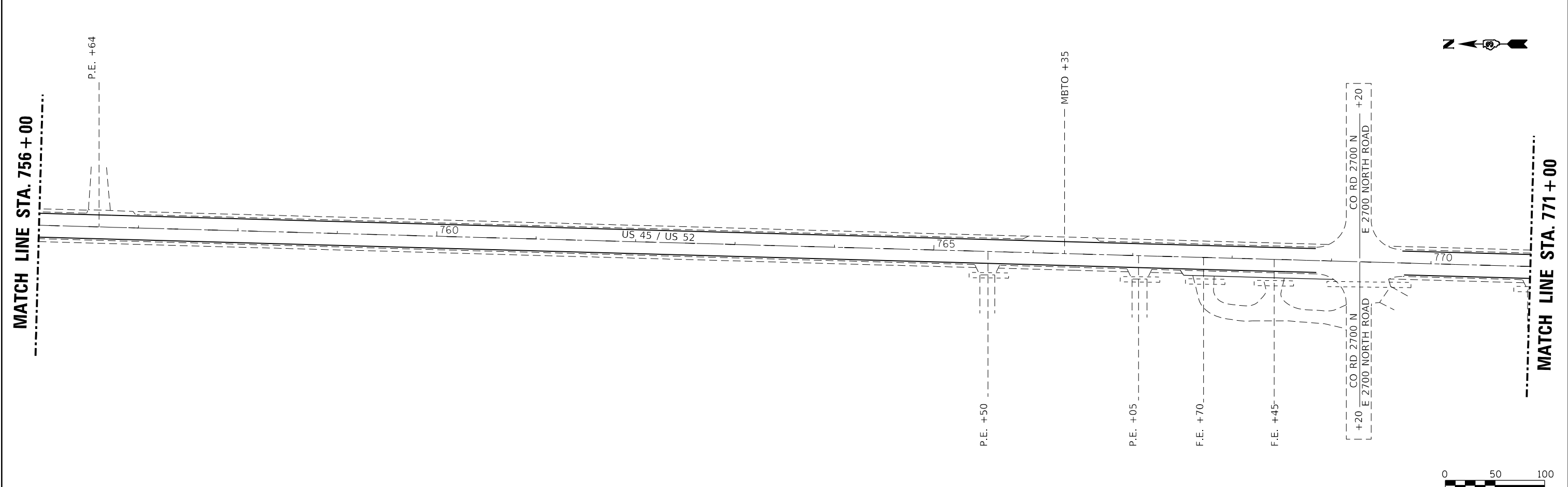
MATCH LINE STA. 741 + 00

MATCH LINE STA. 756 + 00



MATCH LINE STA. 756 + 00

MATCH LINE STA. 771 + 00



FILE NAME =	USER NAME = calderon1	DESIGNED -	REVISED -
ca:\pwork\work\pwork\calderon1\d0282772\0366875-sh1-planviews.dgn		DRAWN -	REVISED -
PLOT SCALE = 100.000' / in.		CHECKED -	REVISED -
PLOT DATE = 4/7/2020		DATE -	REVISED -

**STATE OF ILLINOIS
DEPARTMENT OF TRANSPORTATION**

PLAN VIEWS

SCALE: 50 SHEET 22 OF 24 SHEETS STA. 741+00 TO STA. 771+00

F.A.P. RTE.	SECTION	COUNTY	TOTAL SHEETS	SHEET NO.
840	138 RS-4 & 139 RS-6	KANK/IROO	49	40
CONTRACT NO. 66875				

ILLINOIS FED. AID PROJECT

REV. 4/7/2020