

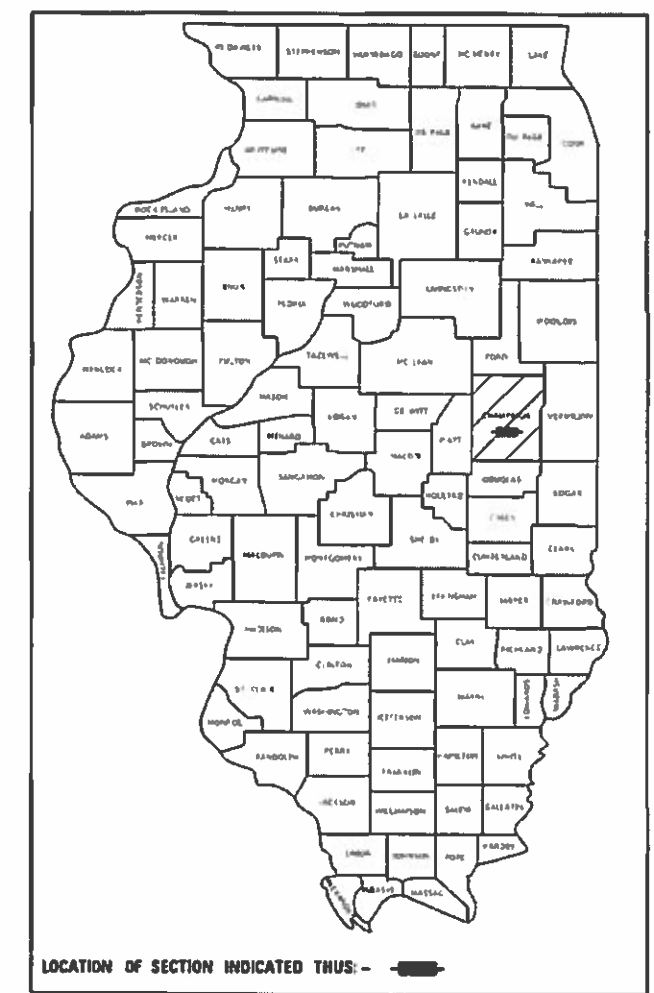
048

STATE OF ILLINOIS
DEPARTMENT OF TRANSPORTATION

F.A.I. RTE	SECTION	COUNTY	TOTAL SHEETS	SHEET NO.
72	10-70)BR	CHAMPAIGN	33	1
ILLINOIS			CONTRACT NO. 70D63	

* 33 TOTAL SHEETS

D-95-002-24



**PROPOSED
HIGHWAY PLANS**

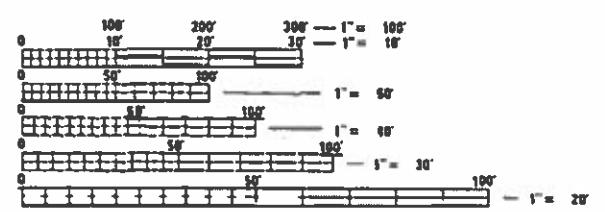
F.A.I. ROUTE 72 (I-72)
SECTION (10-70)BR
PROJECT NHPP-7SPS(287)
BRIDGE DECK REPAIRS
CHAMPAIGN COUNTY

C-95-023-19

FOR INDEX OF SHEETS, SEE SHEET NO. 2
FOR HIGHWAY STANDARDS LIST, SEE SHEET NO. 2
FOR SUMMARY OF QUANTITIES, SEE SHEET NO. 3-5

CURRENT TRAFFIC DATA			
		EAL-72	IL-47
2019	ADT	17,000	3,750
2029	ADT	18,400	4,250
2039	ADT	19,700	4,750
2039	DHV (AM)	1,780	540
2039	DHV (PM)	1,760	425
	PUI/PC%	62.8	90.9
	SU%	3.7	4.8
	MU%	13.5	4.3

DESIGN DESIGNATION
INTERSTATE



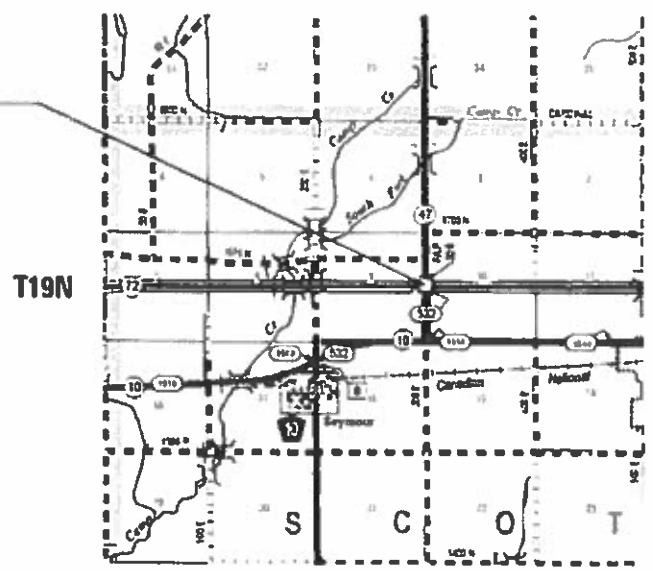
FULL SIZE PLANS HAVE BEEN PREPARED USING STANDARD ENGINEERING SCALES. REDUCED SIZED PLANS WILL NOT CONFORM TO STANDARD SCALES. IN MAKING MEASUREMENTS ON REDUCED PLANS, THE ABOVE SCALES MAY BE USED.

J.U.L.I.E.
JOINT UTILITY LOCATION INFORMATION FOR EXCAVATORS
1-800-892-0123
OR 811

PROJECT ENGINEER: TIM BRANDENBURG
PROJECT MANAGER: JEFF M. SHERER

CONTRACT NO. 70D63

S.N. 010-0056
STA. 1674 + 22.10 (FAL-72)
STA. 50 + 00.00 (IL-47)
BRIDGE DECK REPAIRS



GROSS LENGTH = 321.584 FT. = 0.0600 MILE
NET LENGTH = 321.584 FT. = 0.0600 MILE

STATE OF ILLINOIS
DEPARTMENT OF TRANSPORTATION

SUBMITTED January 22, 2020
[Signature] REGIONAL ENGINEER

March 20, 2020
[Signature] ENGINEER OF DESIGN AND ENVIRONMENT

March 20, 2020
[Signature] DIRECTOR OF HIGHWAYS PROJECT IMPLEMENTATION

PRINTED BY THE AUTHORITY
OF THE STATE OF ILLINOIS

INDEX OF SHEETS

SHEET NO.	ITEM
1	COVER SHEET
2	INDEX OF SHEETS/ HIGHWAY STANDARDS/ GENERAL NOTES
3-5	SUMMARY OF QUANTITIES
6-7	TEMPORARY CONCRETE BARRIER LAYOUT DETAILS
8	GENERAL PLAN AND ELEVATION
9	EXISTING TYPICAL CROSS-SECTION
8-10	STAGED CONSTRUCTION DETAILS
11	WEARING SURFACE PLAN
12	DETAIL OF JOINT TREATMENT AT ABUTMENTS
13-14	DETAIL OF STRUCTURAL STEEL REPAIRS
15-19	DETAILS OF DECK SLAB REPAIRS
20	DETAIL OF DECK PATHING AT DRAINS AND HUB GUARDS
21-24	DETAIL OF STRUCTURAL REPAIR OF CONCRETE
25	DETAIL OF HOT-MIX ASPHALT AT APPROACH PAVEMENT
26	DETAIL OF STONE DUPMED RIP-RAP
27-30	AS-BUILT DETAIL OF DECK SLAB REPAIR
31-33	DETAIL OF WIDTH RESTRICTION SIGNING

LIST OF STANDARDS

STANDARD NO.	DESCRIPTION
000001-07	STANDARD SYMBOLS, ABBREVIATIONS AND PATTERNS
001001-02	AREAS OF REINFORCEMENT BARS
001006	DECIMAL OF AN INCH AND OF A FOOT
701006-05	OFF RD OPERATIONS, 2L,2W, 15' TO 24" FROM EOP
701011-04	OFF RD MOVING OPERATIONS, 2L, 2W, DAY ONLY
701201-05	LANE CLOSURE, 2L 2W, DAY ONLY SPEEDS > 45 MPH
701301-04	LANE CLOSURE, 2L, 2W, SHORT TIME OPERATIONS
701321-18	LANE CLOSURE, 2L 2W, BRIDGE REPAIR WITH BARRIER
701400-09	APPROACH TO LANE CLOSURE - FREEWAY/ EXPRESSWAY
701401-12	LANE CLOSURE FREEWAY/ EXPRESSWAY FOR SPEEDS > 45 MPH
701901-08	TRAFFIC CONTROL DEVICES
704001-08	TEMPORARY CONCRETE BARRIER

GENERAL NOTES

G.N.-100A

ELECTRONIC FILES AND/OR ELECTRONIC SURVEY INFORMATION INCLUDING CADD FILES WILL NOT BE AVAILABLE TO THE CONTRACTOR.

GN 105.07C

EXISTING STATE-OWNED AND MAINTAINED UNDERGROUND UTILITY FACILITIES EXIST WITHIN THE ROW. THE DEPARTMENT IS NOT A MEMBER OF JULIE AND DOES NOT LOCATE IT'S OWN FACILITIES. THE CONTRACTOR SHALL BE RESPONSIBLE AT THEIR OWN EXPENSE FOR SECURING AN APPROVED LOCATING FIRM TO LOCATE ALL EXISTING IDOT UNDERGROUND FACILITIES PRIOR TO COMMENCING ANY EXCAVATION, PER THE REQUIREMENTS OF ARTICLE 803 OF THE STANDARD SPECIFICATIONS. UTILITY LOCATES MAY ALSO BE REQUIRED OUTSIDE THE PROJECT LIMITS, SUCH AS FOR TRAFFIC CONTROL SIGNING AND OTHER ITEMS. THE CONTRACTOR MAY OBTAIN, ON REQUEST, PLANS OF EXISTING ELECTRICAL FACILITIES FROM THE DEPARTMENT. FOR FURTHER INFORMATION, THE CONTRACTOR MAY CONTACT THE DISTRICT TRAFFIC OPERATIONS ENGINEER, GARY SIMS, AT 217-251-4859.

GN 406H

Location	IL 47
Mixture Use	Mainline & Shoulder Surface
AC/PG	PG 64-22
Design Air Voids	4.0% @ Ndes=50
Mix Comp(Gradation)	IL 9.5
Friction Aggregate	Mix C
Mixture Weight	112
Quality Management Program	QC/QA
Sublot Size	N.A.

G.N.-1004.01

COARSE AGGREGATE GRADATION CA-10 MAY BE USED WHENEVER COARSE AGGREGATE CA-6 IS SPECIFIED IN THE STANDARD SPECIFICATIONS.

THERE ARE NO COMMITMENTS ASSOCIATED WITH THIS PROJECT

MODEL: 44001.DWG
FILE NAME: p:\upstream\dot_illinois\pwr\pwwdot\Documents\DOT_Offices\District_3\Projects\DS70D63\CADDData\Structures\70D63-shc-GenNote.dwg

USER NAME = shererjm	DESIGNED - JMS	REVISED -
	DRAWN - JMS	REVISED -
PLOT SCALE = 40.0000' / in.	CHECKED -	REVISED -
PLOT DATE = 3/9/2020	DATE - 02/11/19	REVISED -

STATE OF ILLINOIS
DEPARTMENT OF TRANSPORTATION

INDEX OF SHEETS/HIGHWAY STANDARDS

SCALE: NONE SHEET 1 OF 1 SHEETS STA. TO STA.

F.A.I. RTE.	SECTION	COUNTY	TOTAL SHEETS	SHEET NO.
72	(10-70)BR	CHAMPAIGN	33	2
				CONTRACT NO. 70D63
ILLINOIS FED. AID PROJECT				

CHAMPAIGN COUNTY
FAI-72
INTERSTATE
BRIDGE DECK REPAIRS
S.N. 010-0056
URBAN
90% FED, 10% STATE
0059

CODE NO.	ITEM	UNIT	TOTAL QUANTITY	
28100707	STONE DUMPED RIPRAP, CLASS A4	SQ YD	96.0	96.0
40600290	BITUMINOUS MATERIALS (TACK COAT)	POUND	65.0	65.0
40604050	HOT-MIX ASPHALT SURFACE COURSE, IL 9.5, MIX "C", N50	TON	13.0	13.0
44000155	HOT-MIX ASPHALT SURFACE REMOVAL, 1 1/2"	SQ YD	356.0	356.0
50102400	CONCRETE REMOVAL	CU YD	1.2	1.2
50157300	PROTECTIVE SHIELD	SQ YD	303.0	303.0
50300100	FLOOR DRAINS	EACH	12.0	12.0
50300255	CONCRETE SUPERSTRUCTURE	CU YD	1.3	1.3
50300260	BRIDGE DECK GROOVING	SQ YD	910.0	910.0
50300300	PROTECTIVE COAT	SQ YD	982.0	982.0
50500405	FURNISHING AND ERECTING STRUCTURAL STEEL	POUND	2,820.0	2,820.0
67000500	ENGINEER'S FIELD OFFICE, TYPE B	CAL MO	6.0	6.0
67100100	MOBILIZATION	L SUM	1.0	1.0
70100405	TRAFFIC CONTROL AND PROTECTION, STANDARD 701321	EACH	1.0	1.0
70100450	TRAFFIC CONTROL AND PROTECTION, STANDARD 701201	L SUM	1.0	1.0

MODEL - \$MODEL\$
 FILE NAME - p:\planroom\dot\illinois.gov\PM\DOT\Documents\DOT - Offices\District 5\Projects\DS\70D63\CAD\Bridges\Structures\70D63-shr-500.dgn

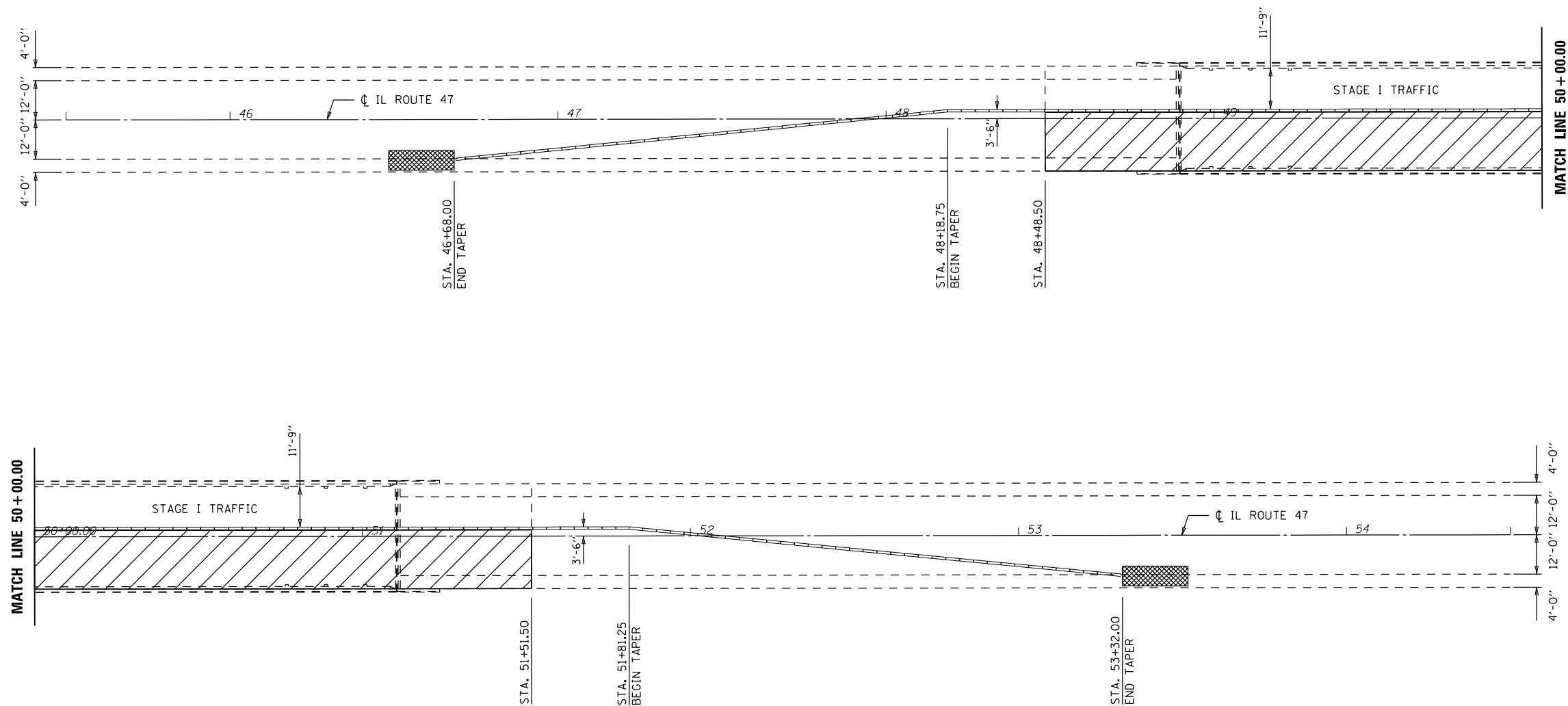
STATE OF ILLINOIS
DEPARTMENT OF TRANSPORTATION

SUMMARY QUANTITIES

F.A.I. RTE.	SECTION	COUNTY	TOTAL SHEETS	SHEET NO.
72	(10-70)BR	CHAMPAIGN	44	3
			CONTRACT NO. 70D63	

SCALE: SHEET 1 OF 3 SHEETS STA. TO STA.

STAGE I TEMPORARY CONCRETE BARRIER LAYOUT



70400100 TEMPORARY CONCRETE BARRIER

		STATION	TO	STATION	LENGTH
TAPER	RT	46+68.00		RT 48+18.75	150.0
	RT	48+18.75		RT 51+81.25	362.5
TAPER	RT	51+81.25		RT 53+32.00	150.0
SUB-TOTAL =					662.5

PLAN NOTES:


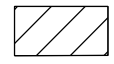

ALL STAGING DETAILS SHALL BE IN ACCORDANCE WITH TRAFFIC CONTROL AND PROTECTION STANDARD 701321 AND PAID FOR AT THE CONTRACT UNIT PRICE PER EACH LOCATION.

ALL WORK WITHOUT TEMPORARY CONCRETE BARRIER IN PLACE SHALL BE IN ACCORDANCE WITH TRAFFIC CONTROL AND PROTECTION STANDARDS 701201, 701301 AND 701311.

FOR ADDITIONAL DETAILS ASSOCIATED WITH TEMPORARY CONCRETE BARRIER, SEE HIGHWAY STANDARD 704001.

EXISTING OR TEMPORARY PAVEMENT MARKINGS SHALL BE ON BOTH SIDES OF THE OPEN LANE FROM STOP BAR TO STOP BAR. PAVEMENT MARKINGS THAT CONFLICT WITH STAGED TRAFFIC MARKINGS SHALL BE REMOVED. THIS WORK SHALL BE INCLUDED IN THE COST FOR TRAFFIC CONTROL AND PROTECTION STANDARD 701321.

REFLECTORS SHALL BE ATTACHED TO GUARDRAIL AND BARRIER WALL AT 25 FOOT CENTERS. COST INCLUDED WITH TRAFFIC CONTROL AND PROTECTION STANDARD 701321.

-  TEMPORARY CONCRETE BARRIER
-  PROPOSED WORK AREA
-  IMPACT ATTENUATOR

BILL OF MATERIALS

ITEM	UNIT	TOTAL
TEMPORARY CONCRETE BARRIER	FOOT	662.5
IMPACT ATTENUATOR TEMPORARY (NON-REDIRECTIVE) TEST LEVEL 3	EACH	2.0

MODEL: \$MODELNAME
FILE NAME: p:\data\mcom.dwg
PROJECT: 0520063\CADData\Structures\70063-sh-StructurePlans.dgn

USER NAME = sherenjm	DESIGNED - JMS	REVISED -
PLOT SCALE = 40.0360' / in.	CHECKED - JMS	REVISED -
PLOT DATE = 3/9/2020	DATE - 061819	REVISED -

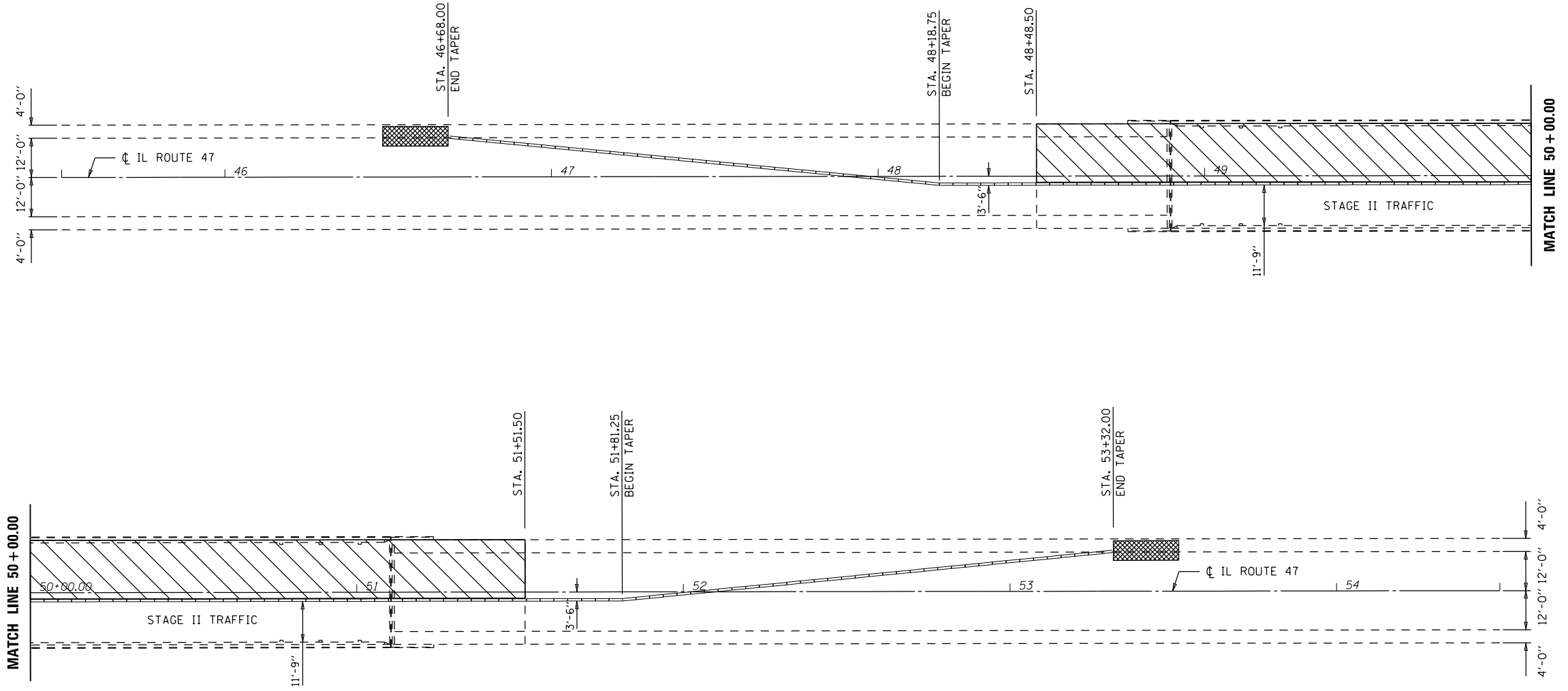
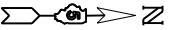
**STATE OF ILLINOIS
DEPARTMENT OF TRANSPORTATION**

TEMPORARY CONCRETE BARRIER LAYOUT DETAIL
S.N. 010-0056

SCALE: NONE SHEET 1 OF 2 SHEETS STA. TO STA.

F.A.I. RTE. 72	SECTION (10-70)BR	COUNTY CHAMPAIGN	TOTAL SHEETS 33	SHEET NO. 6
CONTRACT NO. 70D63				
ILLINOIS FED. AID PROJECT				

STAGE II TEMPORARY CONCRETE BARRIER LAYOUT



70400200 RELOCATE TEMPORARY CONCRETE BARRIER

	STATION	TO	STATION	LENGTH
TAPER LT	46+68.00		LT 48+18.75	150.0
	LT 48+18.75		LT 51+81.25	362.5
TAPER LT	51+81.25		LT 53+32.00	150.0
SUB-TOTAL =				662.5

PLAN NOTES:

ALL STAGING DETAILS SHALL BE IN ACCORDANCE WITH TRAFFIC CONTROL AND PROTECTION STANDARD 701321 AND PAID FOR AT THE CONTRACT UNIT PRICE PER EACH LOCATION.

ALL WORK WITHOUT TEMPORARY CONCRETE BARRIER IN PLACE SHALL BE IN ACCORDANCE WITH TRAFFIC CONTROL AND PROTECTION STANDARDS 701201, 701301 AND 701311.

FOR ADDITIONAL DETAILS ASSOCIATED WITH TEMPORARY CONCRETE BARRIER, SEE HIGHWAY STANDARD 704001.

EXISTING OR TEMPORARY PAVEMENT MARKINGS SHALL BE ON BOTH SIDES OF THE OPEN LANE FROM STOP BAR TO STOP BAR. PAVEMENT MARKINGS THAT CONFLICT WITH STAGED TRAFFIC MARKINGS SHALL BE REMOVED. THIS WORK SHALL BE INCLUDED IN THE COST FOR TRAFFIC CONTROL AND PROTECTION STANDARD 701321.

REFLECTORS SHALL BE ATTACHED TO GUARDRAIL AND BARRIER WALL AT 25 FOOT CENTERS. COST INCLUDED WITH TRAFFIC CONTROL AND PROTECTION STANDARD 701321.

- TEMPORARY CONCRETE BARRIER
- PROPOSED WORK AREA
- IMPACT ATTENUATOR

BILL OF MATERIALS

ITEM	UNIT	TOTAL
REL TEMPORARY CONCRETE BARRIER	FOOT	662.5
IMPACT ATTENUATOR RELOCATE (NON-REDIRECTIVE) TEST LEVEL 3	EACH	2.0

MODEL: \$MODELNAME
FILE NAME: p:\data\mcom.dwg
PROJECT: 0570063\CADData\Structures\70063-sh-StructurePlans.dgn

USER NAME = sherenjm	DESIGNED - JMS	REVISED -
	DRAWN -	REVISED -
PLOT SCALE = 40.0360 ' / in.	CHECKED - JMS	REVISED -
PLOT DATE = 3/9/2020	DATE - 061819	REVISED -

**STATE OF ILLINOIS
DEPARTMENT OF TRANSPORTATION**

**TEMPORARY CONCRETE BARRIER LAYOUT DETAIL
S.N. 010-0056**

SCALE: NONE SHEET 2 OF 2 SHEETS STA. TO STA.

F.A.I. RTE.	SECTION	COUNTY	TOTAL SHEETS	SHEET NO.
72	(10-70)BR	CHAMPAIGN	33	7
			CONTRACT NO. 70D63	
ILLINOIS FED. AID PROJECT				

Structure Number 010-0056 was built in 1969, Section 10-70HB-2 at Station 1674+22.18 by the State of Illinois in Champaign County. The Structure was rehabilitated in 2001 and received an HMA wearing surface. The structure is a four (4) span 7 1/2" thick reinforced concrete deck, steel continuous beam bridge on concrete pile supported abutments and creosoted timber pile supported piers.

The existing structure has a back-to-back abutment length of 223'-0", and out-to-out width of 34'-0", clear width of 30'-6", and an approach roadway width of 32'-0".

PROPOSED WORK

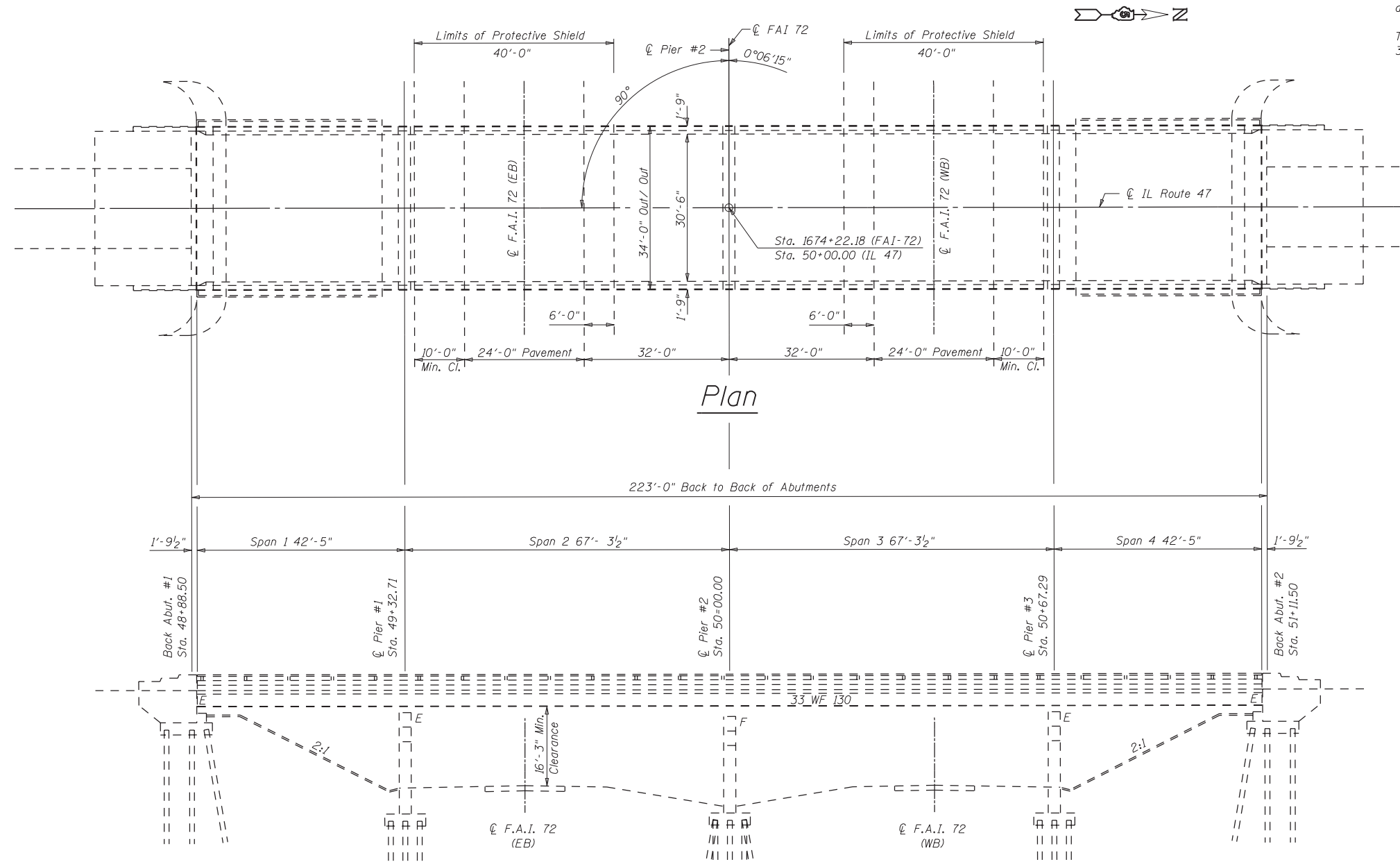
1. Remove HMA Wearing Surface from Deck
2. Remove HMA Surface from Approaches
3. Perform Deck Slab Repair
4. Place Floor Drains
5. Remove Existing Polymer Nosing at Joints
6. Perform Concrete Removal at Hatches
7. Remove and Replace diaphragms
8. Perform Beam End Repairs
9. Place Concrete Superstructure at Hatches
10. Perform Bridge Deck Scarification 3/4"
11. Place Bridge Deck Latex Concrete 2 1/2"
12. Perform Bridge Deck Grooving.
13. Place Polymer Concrete
14. Place Silicone Joint Seal

INDEX OF SHEETS

1. General Plan and Elevation
2. Deck Cross Sections
3. Staging Details
4. Wearing Surface Plan
5. Joint Details at Abutments
- 6.-7. Structural Steel Repairs
- 8.-11. Bridge Deck Patching Details
12. Schedule of Deck Slab Repair
13. Detail of Patching at Deck Drains
- 14.-17. Detail of Structural Repair of Concrete
18. Detail of Hot-Mix Asphalt Approach Pavement
19. Detail of Stone Dumped Riprap
- 20.-23. As-Built Patching Sheets

TOTAL BILL OF MATERIAL

ITEM	UNIT	TOTAL
Concrete Removal	Cu. Yd.	1.2
Protective Shield	Sq. Yd.	303.0
Floor Drains	Each	12.0
Concrete Superstructure	Cu. Yd.	1.3
Bridge Deck Grooving	Sq. Yd.	910.0
Protective Coat	Sq. Yd.	982.0
Furnishing & Erecting Structural Steel	Pound	2,820.0
Structural Steel Removal	Pound	2,705.0
Structural Steel Repair	Pound	2,310.0
Hot-Mix Asphalt Surface Removal (Deck)	Sq. Yd.	749.0
Bridge Deck Latex Concrete Overlay 2 1/2"	Sq. Yd.	963.0
Bridge Deck Scarification 3/4"	Sq. Yd.	963.0
Structural Repair of Concrete Depth <= 5"	Sq. Ft.	245.0
Deck Slab Repair (Full-Depth, Type 2)	Sq. Yd.	90.9
Silicone Joint Seal 1 1/2"	Foot	68.0
Polymer Concrete	Cu. Ft.	8.0
HMA Surface Removal, 1 1/2"	Sq. Yd.	356.0
HMA Surface Course, Mix "C", N50	Ton	13.0



Elevation

GENERAL NOTES

Plan dimensions and details relative to existing plans are subject to nominal construction variations. The contractor shall field verify existing dimensions and details affecting new construction and make necessary approved adjustments prior to construction or ordering of materials. Such variations shall not be cause for additional compensation for a change in scope of work, however the contractor will be paid for the quantity actually furnished at the unit price bid for the work.

Existing reinforcement bars extending into the removal area shall be cleaned, straightened and incorporated into the new construction, cost included with Deck Slab Repair.

S.N. 010-0056 has been determined, through testing, not to involve asbestos in the bituminous bridge deck wearing surface or waterproofing membrane as certified with BBS from 2536 dated October 19, 2001.

Protective coat shall be applied to the top and inside face of parapets and deck surface of new concrete adjacent to joints.

Synthetic Fibers shall be included in the Bridge Deck Latex Concrete Overlays. See Special Provisions.



David Carl Puzey 04/10/2020
EXPIRES: 11/30/2020

USER NAME = sherenjm	DESIGNED - JMS	REVISED -
	DRAWN - JMS	REVISED -
PLOT SCALE = 40.0360' / in.	CHECKED -	REVISED -
PLOT DATE = 3/9/2020	DATE - 061819	REVISED -

**STATE OF ILLINOIS
DEPARTMENT OF TRANSPORTATION**

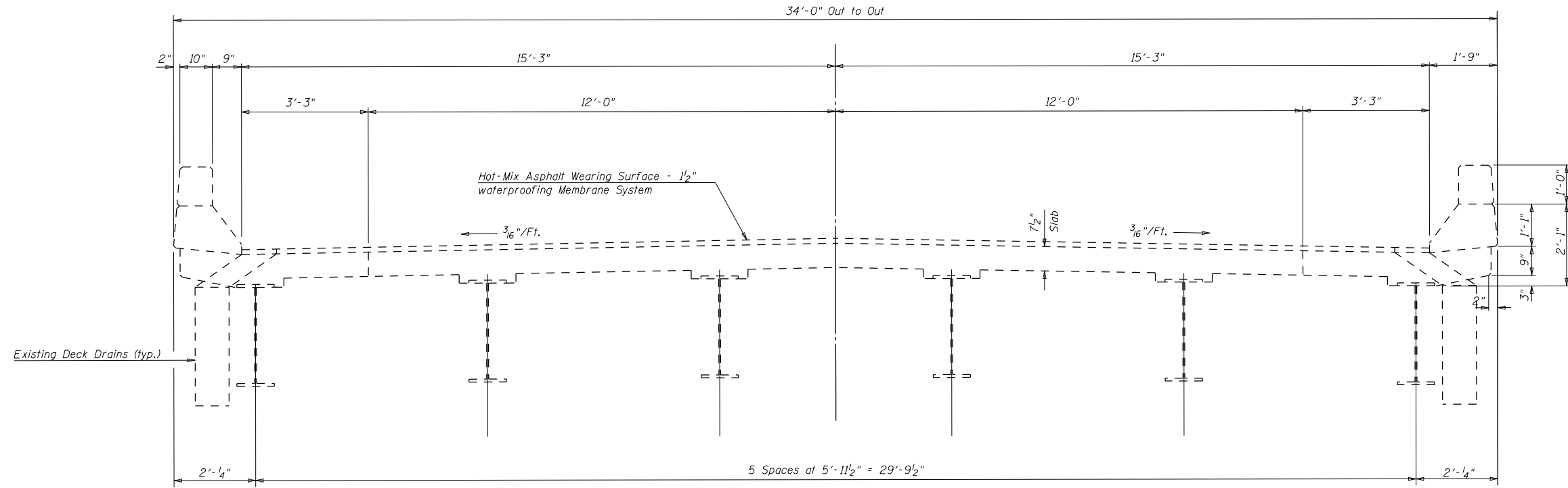
**GENERAL PLAN AND ELEVATION
S.N. 010-0056**

SCALE: NONE SHEET 1 OF 23 SHEETS STA. TO STA.

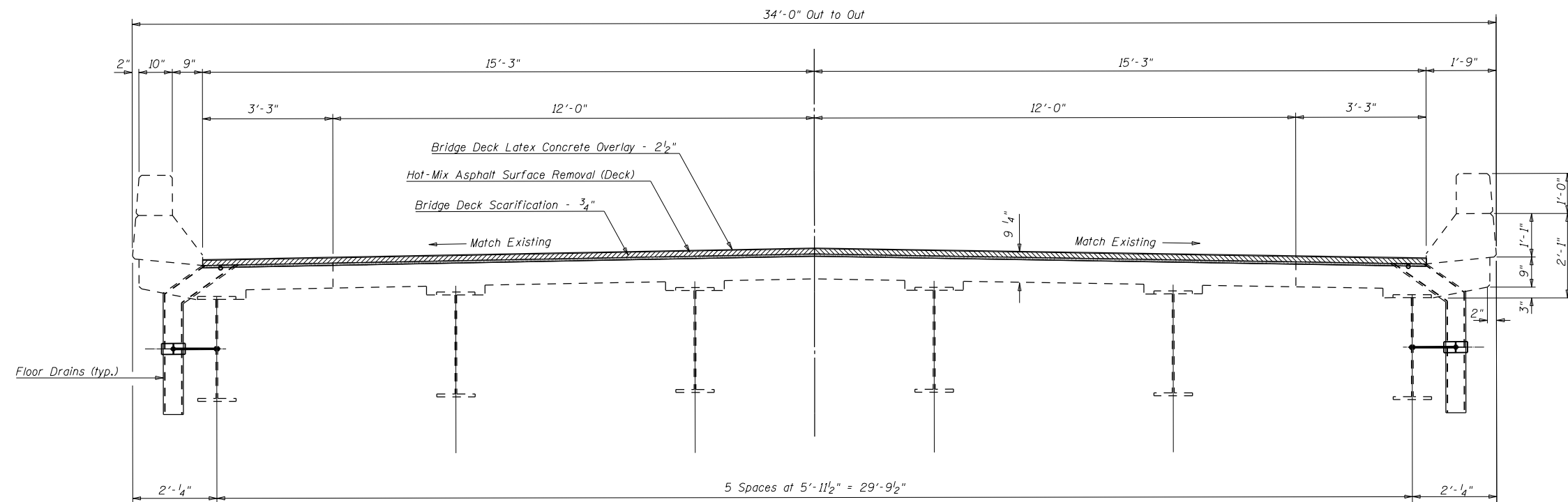
F.A.I. RTE.	SECTION	COUNTY	TOTAL SHEETS	SHEET NO.
72	(10-70)BR	CHAMPAIGN	33	8
CONTRACT NO. 70D63				
ILLINOIS FED. AID PROJECT				

MODEL: \$MODELNAME\$ FILE NAME: p:\data\mcom.dca.illinois.gov\PI\DOT\Documents\DOT - Offices\District 5\Projects\0570063\CADData\Structures\70D63-sh-StructurePlans.dgn

EXISTING TYPICAL CROSS-SECTION



PROPOSED TYPICAL CROSS-SECTION



MODEL: \$MODELNAME
FILE NAME: p:\altemcom.dwg
PROJECT: 70D63
DRAWING: 70D63-STR-STRUCTURE-PLANS.dwg

USER NAME = sherenjm	DESIGNED - JMS	REVISED -
DRAWN - JMS	REVISED -	
PLOT SCALE = 40.0360' / in.	CHECKED -	REVISED -
PLOT DATE = 3/9/2020	DATE - 061819	REVISED -

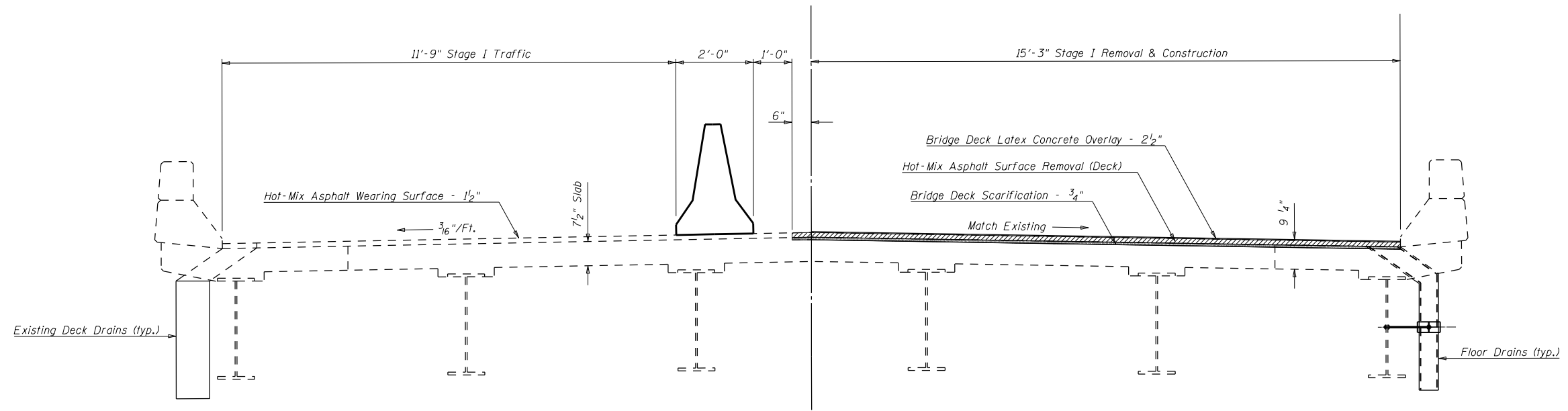
**STATE OF ILLINOIS
DEPARTMENT OF TRANSPORTATION**

**TYPICAL CROSS-SECTIONS
S.N. 010-0056**

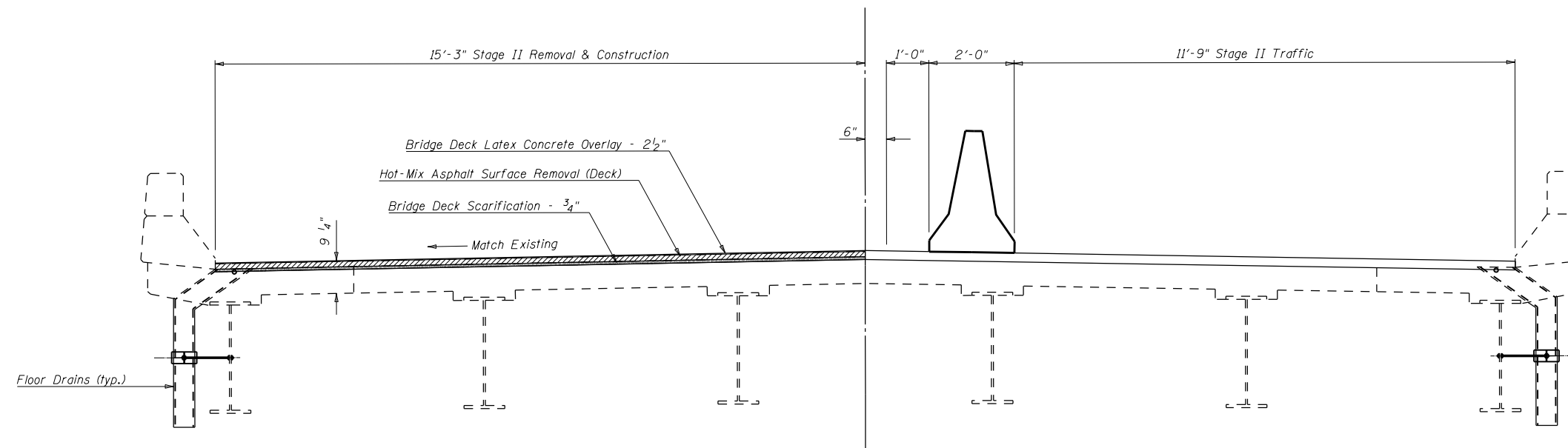
SCALE: NONE SHEET 2 OF 23 SHEETS STA. TO STA.

F.A.I. RTE.	SECTION	COUNTY	TOTAL SHEETS	SHEET NO.
72	(10-70)BR	CHAMPAIGN	33	9
CONTRACT NO. 70D63				
ILLINOIS FED. AID PROJECT				

STAGE I CONSTRUCTION DETAIL (LOOKING NORTH)



STAGE II CONSTRUCTION DETAIL (LOOKING NORTH)



MODEL: \$MODELNAME\$
 FILE NAME: p:\data\mcom\da_illinois.gov\p\DOT\Documents\DOT_Offices\District_3\Projects\0570D63\CADData\Structures\70D63-Str-StructurePlans.dgn

USER NAME = sherenjm	DESIGNED - JMS	REVISED -
	DRAWN - JMS	REVISED -
PLOT SCALE = 40.0360' / in.	CHECKED -	REVISED -
PLOT DATE = 3/10/2020	DATE - 061819	REVISED -

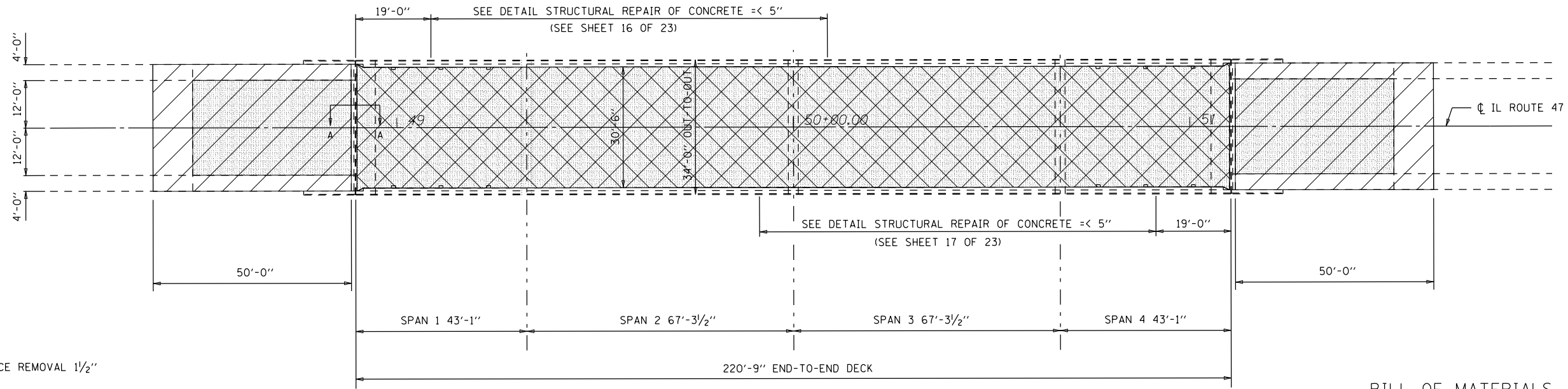
**STATE OF ILLINOIS
DEPARTMENT OF TRANSPORTATION**

**STAGE CONSTRUCTION DETAIL
S.N. 010-0056**

SCALE: NONE SHEET 3 OF 23 SHEETS STA. TO STA.

F.A.I. RTE.	SECTION	COUNTY	TOTAL SHEETS	SHEET NO.
72	(10-70)BR	CHAMPAIGN	33	10
CONTRACT NO. 70D63				
ILLINOIS FED. AID PROJECT				

DETAIL OF WEARING SURFACE REMOVAL

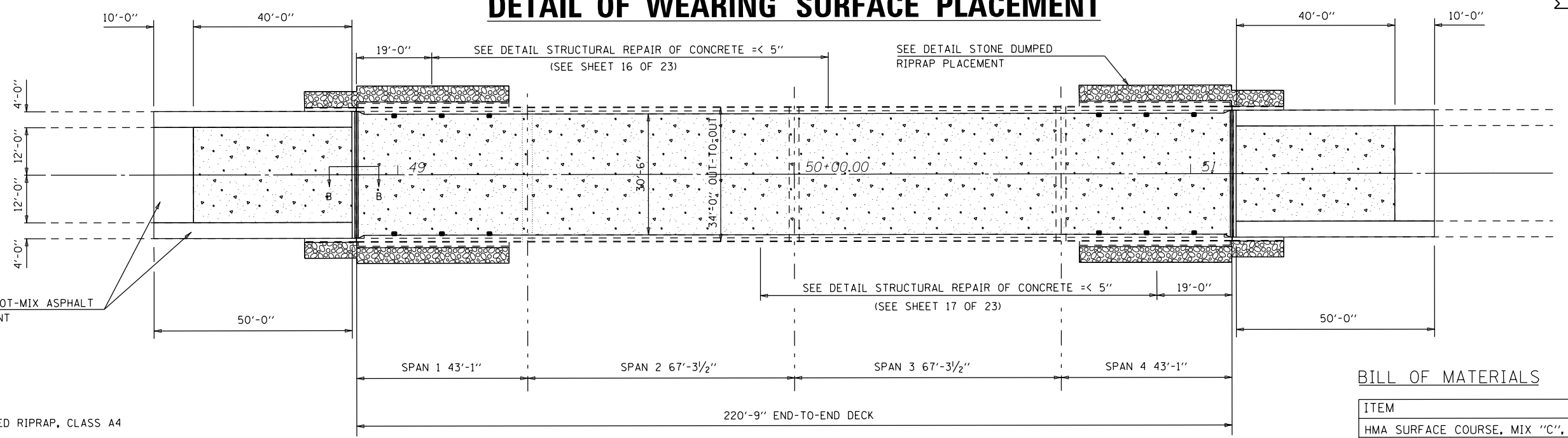


- HMA SURFACE REMOVAL 1 1/2"
- HMA SURFACE REMOVAL (DECK)
- BRIDGE DECK SCARIFICATION - 3/4"

BILL OF MATERIALS

ITEM	UNIT	TOTAL
HMA SURFACE REMOVAL 1 1/2"	SQ YD	356.0
HMA SURFACE REMOVAL (DECK)	SQ YD	749.0
BRIDGE DECK SCARIFICATION 3/4"	SQ YD	963.0

DETAIL OF WEARING SURFACE PLACEMENT



- STONE DUMPED RIPRAP, CLASS A4
- BRIDGE DECK LATEX CONCRETE OVERLAY, 2 1/2"

BILL OF MATERIALS

ITEM	UNIT	TOTAL
HMA SURFACE COURSE, MIX "C", N50	TON	13.0
BRIDGE DECK GROOVING	SQ YD	910.0
BRIDGE DECK LATEX CONCRETE OVLY, 2 1/2"	SQ YD	963.0
PROTECTIVE COAT	SQ YD	968.0

MODEL: \$MODELNAME\$ FILE: NAME: p:\altemcom.dwg I:\msk\pwr\PIV\DOT\Documents\DOT - Offices\District 5\Projects\0570D63\CADData\Structures\70D63-sh-StructurePlans.dgn

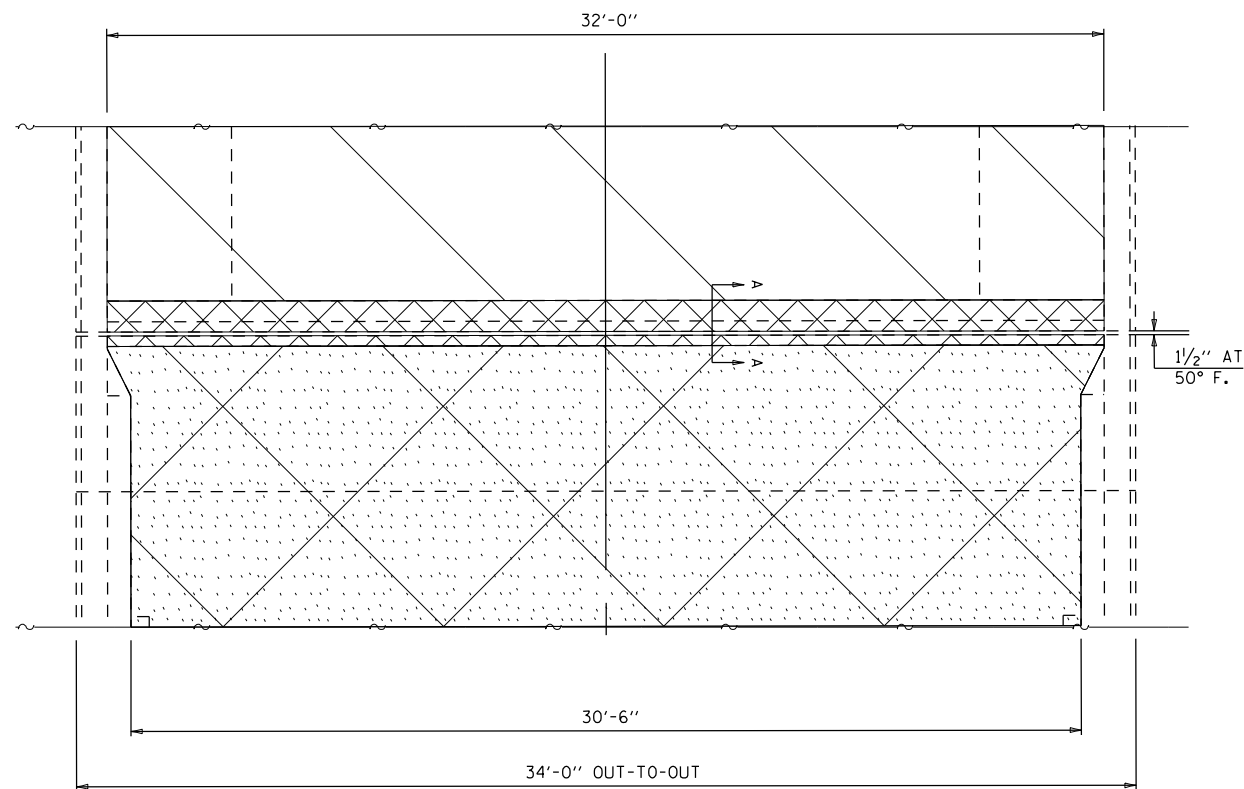
USER NAME = sherenjm	DESIGNED - JMS	REVISED -
PLOT SCALE = 40.0360' / in.	CHECKED - JMS	REVISED -
PLOT DATE = 3/9/2020	DATE - 061819	REVISED -

**STATE OF ILLINOIS
DEPARTMENT OF TRANSPORTATION**

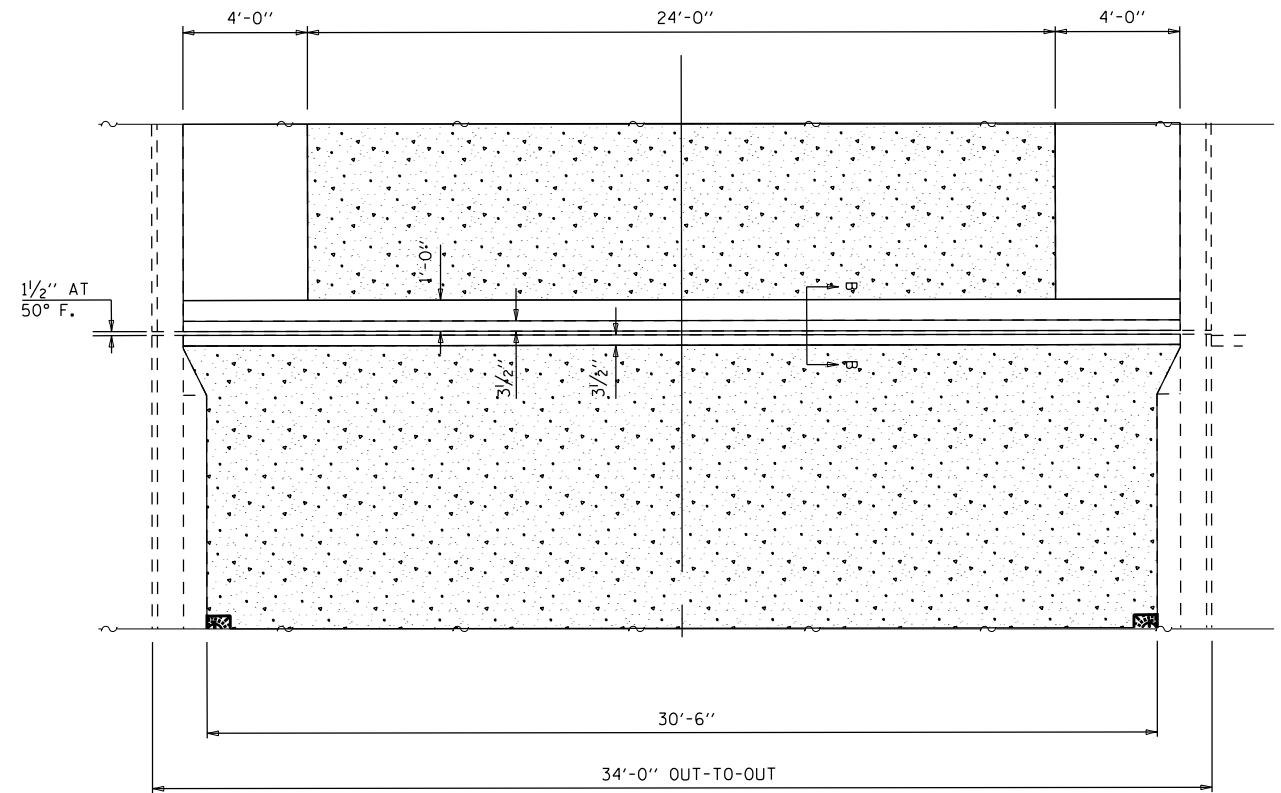
**WEARING SURFACE PLAN
S.N. 010-0056**

SCALE: NONE SHEET 4 OF 23 SHEETS STA. TO STA.

F.A.I. RTE.	SECTION	COUNTY	TOTAL SHEETS	SHEET NO.
72	(10-70)BR	CHAMPAIGN	33	11
CONTRACT NO. 70D63				
ILLINOIS FED. AID PROJECT				

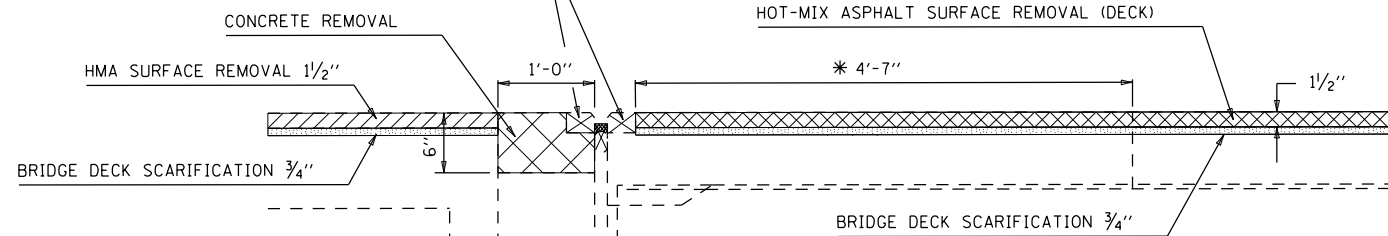


EXISTING PLAN
(ABUTMENT NO. 2 SHOWN, ABUTMENT NO. 1 SIMILAR)

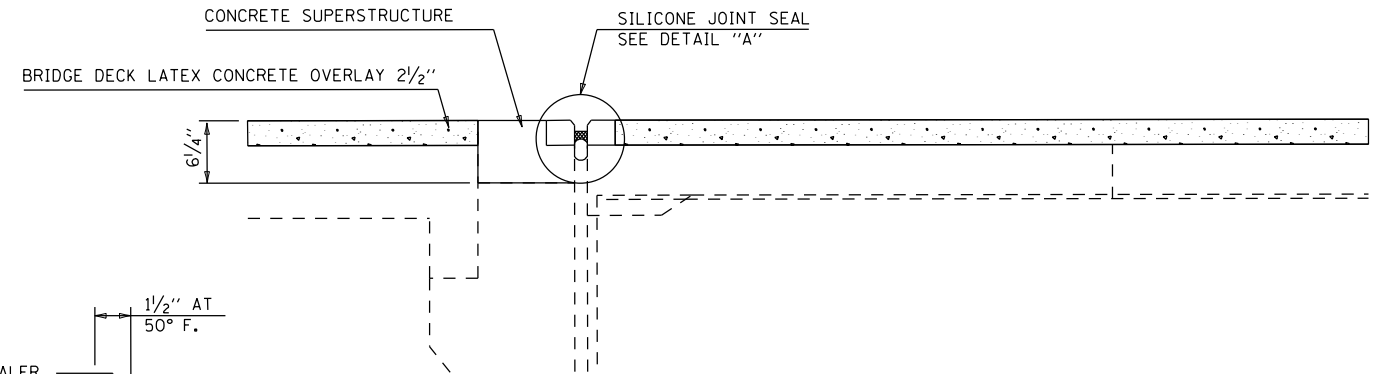


PROPOSED PLAN
(ABUTMENT NO. 2 SHOWN, ABUTMENT NO. 1 SIMILAR)

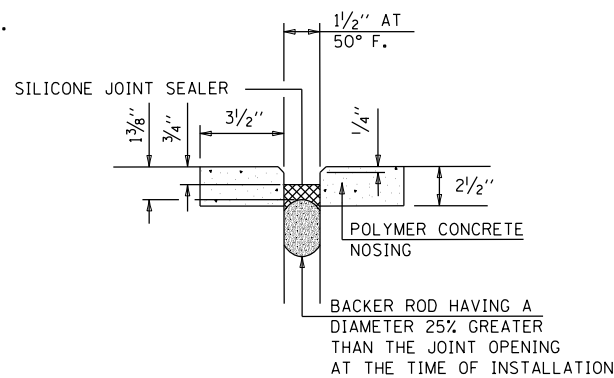
EXISTING POLYMER CONCRETE REMOVAL SHALL BE COMPLETED WITH A 2" SAW CUT AT THE BACK OF THE POLYMER CONCRETE AND 15 LB CHIPPING HAMMERS. COST INCLUDED WITH CONCRETE REMOVAL.



SECTION A-A THRU ABUTMENTS



PROPOSED SECTION B-B THRU ABUTMENTS



SILICONE JOINT SEAL DETAIL "A"

BILL OF MATERIALS

ITEM	UNIT	TOTAL
CONCRETE REMOVAL	CU YD	1.2
CONCRETE SUPERSTRUCTURE	CU YD	1.3
SILICONE JOINT SEALER, 1/2"	FOOT	68.0
POLYMER CONCRETE	CU FT	8.0

MODEL: \$MODELNAME
FILE NAME: p:\alumni\com.dca.illinois.gov\PI\DOT\Documents\DOT - Offices\District 5\Projects\0570063\CADData\Structures\70D63-Sub-StructurePlans.dgn

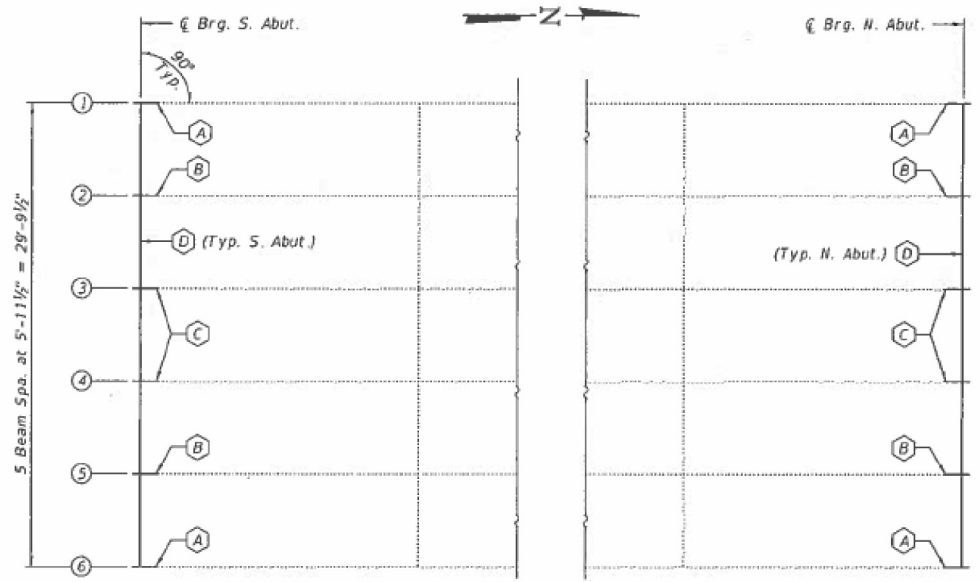
USER NAME = sherenjm	DESIGNED - JMS	REVISED -
PLOT SCALE = 40.0360' / in.	DRAWN -	REVISED -
PLOT DATE = 3/9/2020	CHECKED - JMS	REVISED -
	DATE - 061819	REVISED -

STATE OF ILLINOIS
DEPARTMENT OF TRANSPORTATION

DETAIL OF JOINT TREATMENT AT ABUTMENTS
S.N. 010-0056

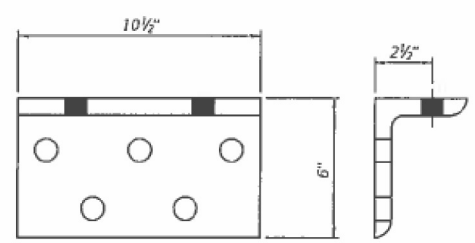
SCALE: NONE SHEET 5 OF 23 SHEETS STA. TO STA.

F.A.I. RTE.	SECTION	COUNTY	TOTAL SHEETS	SHEET NO.
72	(10-70)BR	CHAMPAIGN	33	12
CONTRACT NO. 70D63				
ILLINOIS FED. AID PROJECT				

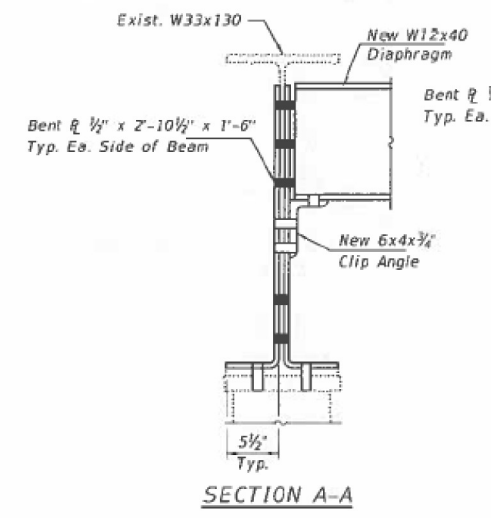


PARTIAL FRAMING PLAN

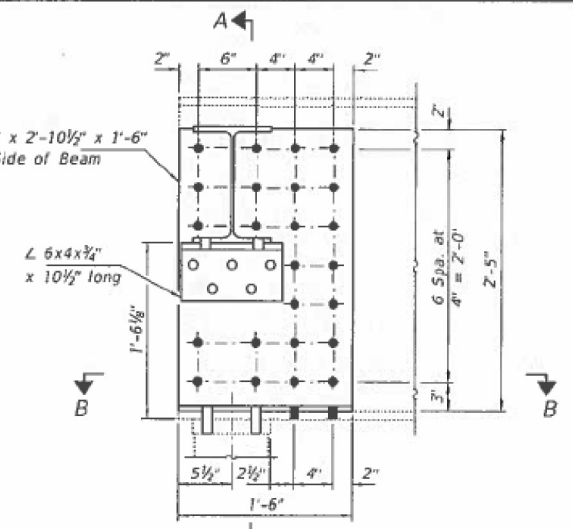
- Ⓐ - Beam End Repair - Repair A
- Ⓑ - Beam End Repair - Repair B
- Ⓒ - Beam End Repair - Repair C
- Ⓓ - Remove and Replace Diaphragms and Clip Angles.



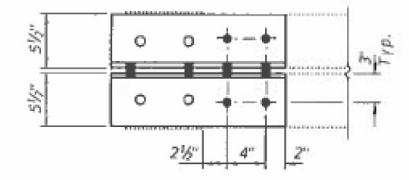
CLIP ANGLE DETAILS
 L 6x4x³/₄ x 10¹/₂" long
 (20 Required)



SECTION A-A



REPAIR A
 (4 Locations)



SECTION B-B

NOTES

All structural steel shall conform to AASHTO Classification M-270 Gr. 36, unless otherwise noted.
 Plan dimensions and details relative to existing plans are subject to nominal construction variations. The Contractor shall field verify existing dimensions and details affecting new construction and make necessary approved adjustments prior to construction or ordering of materials. Such variations shall not be cause for additional compensation for a change in scope of the work, however, the Contractor will be paid for the quantity actually furnished at the unit price bid for the work.
 All structural steel shall be hot-dip galvanized. See special Provisions for "Hot Dip Galvanizing For Structural Steel".
 Fasteners shall be high strength bolts. Bolts ³/₄" Ø, open holes ¹/₁₆" Ø, unless otherwise noted.
 Existing structural steel that will be in contact with new structural steel shall be cleaned and painted prior to erection as required by the special provision "Cleaning and Painting Contact Surface Areas of Existing Steel Structures".
 The existing structural steel coating contains lead. The Contractor shall take appropriate precautions to deal with the presence of lead on this project.
 After the new beam is in its final position, the Engineer in the field shall check to see that the top flange is tight against the slab. If not, the Contractor shall inject epoxy between the existing concrete deck and the top flange of the beam. See Special Provision "Epoxy Injection".

BOLT HOLE LEGEND

- - Field drill using existing steel as template.
- - Shop drill holes in new steel.

BILL OF MATERIAL

ITEM	UNIT	QUANTITY
Structural Steel Repair	Pound	2310
Structural Steel Removal	Pound	2705
Furnishing and Erecting Structural Steel	Pound	2820

DRAFT
 DATE: 7/24/2019
 EXPIRES 11-30-2020

DESIGNED -	EXAMINED -	DATE - JULY 24, 2019	STATE OF ILLINOIS DEPARTMENT OF TRANSPORTATION	REPAIR DETAILS SN 010-0056	F.A.P. RTE.	SECTION	COUNTY	TOTAL SHEETS	SHEET NO.
CHECKED -	ENGINEER OF STRUCTURAL SERVICES	REVISED -			336		CHAMPAIGN	14	
DRAWN - Venkat Reddy	ENGINEER OF BRIDGES AND STRUCTURES	REVISED -			CONTRACT NO. 70063				
CHECKED -					ILLINOIS FED. AID PROJECT				

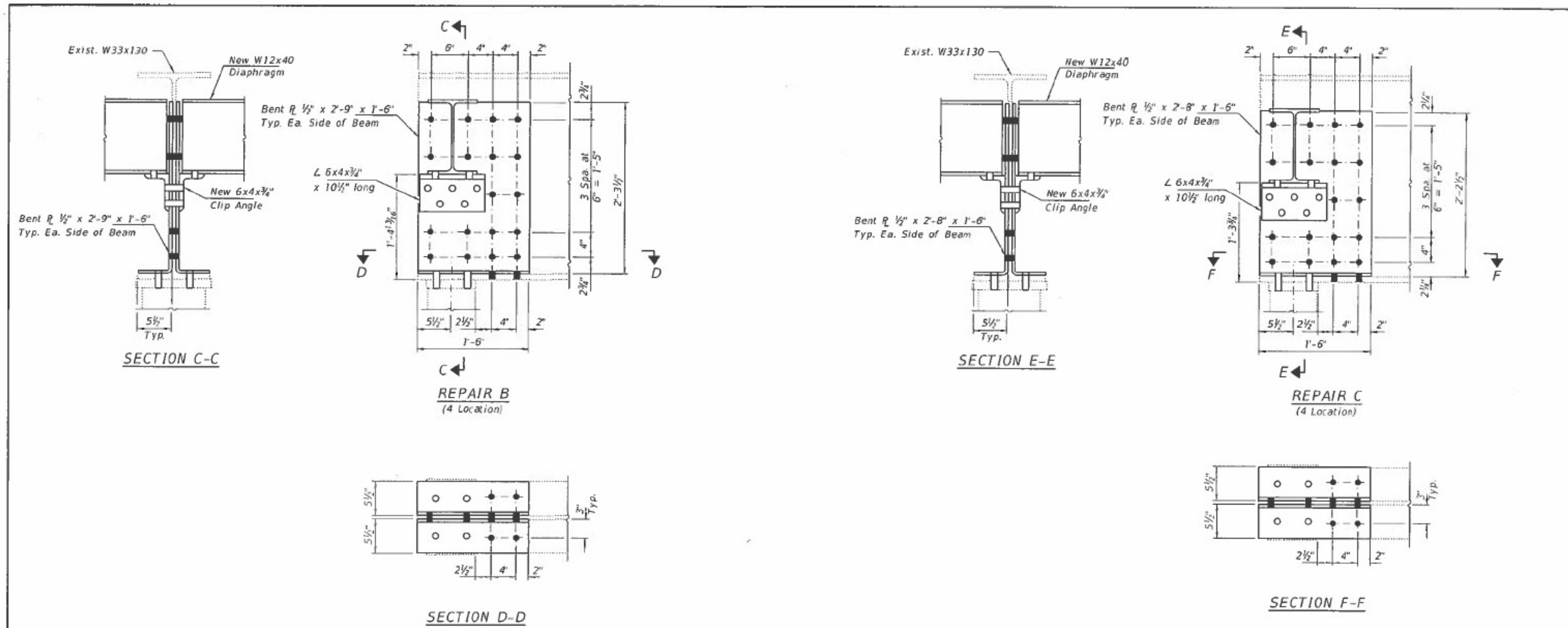
USER NAME = sherenjm	DESIGNED - JMS	REVISED -
PLOT SCALE = 40.0360' / in.	CHECKED - JMS	REVISED -
PLOT DATE = 3/9/2020	DATE - 061819	REVISED -

**STATE OF ILLINOIS
DEPARTMENT OF TRANSPORTATION**

**STRUCTURAL STEEL REPAIRS
S.N. 010-0056**

SCALE: NONE SHEET 6 OF 23 SHEETS STA. TO STA.

F.A.I. RTE.	SECTION	COUNTY	TOTAL SHEETS	SHEET NO.
72	(10-70)BR	CHAMPAIGN	33	13
CONTRACT NO. 70D63				
ILLINOIS FED. AID PROJECT				



BOLT HOLE LEGEND

- - Field drill using existing steel as template.
- - Shop drill holes in new steel.

DRAFT
DATE: 7/24/2019

DESIGNED - XXX	EXAMINED - <i>Timothy A. Bault</i>	DATE - JULY 24, 2019	STATE OF ILLINOIS DEPARTMENT OF TRANSPORTATION	REPAIR DETAILS SN 010-0056	F.A.P. RTE. 338	SECTION	COUNTY	TOTAL SHEETS	SHEET NO.
CHECKED - XXX	PASSED - <i>A. Carl Perry</i>	REVISED -			CHAMPAIGN	15			
DRAWN - <i>Venkatesh Reddy</i>	ENGINEER OF BRIDGES AND STRUCTURES	REVISED -	SHEET NO. 2 OF 2 SHEETS		ILLINOIS FED. AID PROJECT				
CHECKED - XXX			CONTRACT NO. 70D63						

USER NAME = sherenjm	DESIGNED - JMS	REVISED -
PLOT SCALE = 40.0360' / in.	CHECKED - JMS	REVISED -
PLOT DATE = 3/9/2020	DATE - 061819	REVISED -

**STATE OF ILLINOIS
DEPARTMENT OF TRANSPORTATION**

STRUCTURAL STEEL REPAIRS S.N. 010-0056			
SCALE: NONE	SHEET 7	OF 23 SHEETS	STA. TO STA.

F.A.I. RTE. 72	SECTION (10-70)BR	COUNTY CHAMPAIGN	TOTAL SHEETS 33	SHEET NO. 14
CONTRACT NO. 70D63				
ILLINOIS FED. AID PROJECT				

MODEL \$MODELNAME\$ FILE NAME: p:\data\mcom\da.illinois.gov\PIVDOT\Documents\DOT - Offices\District 5\Projects\0570D63\CADData\Structures\70D63-Str-StructurePlans.dgn

SPAN 1 S.N. 010-0056

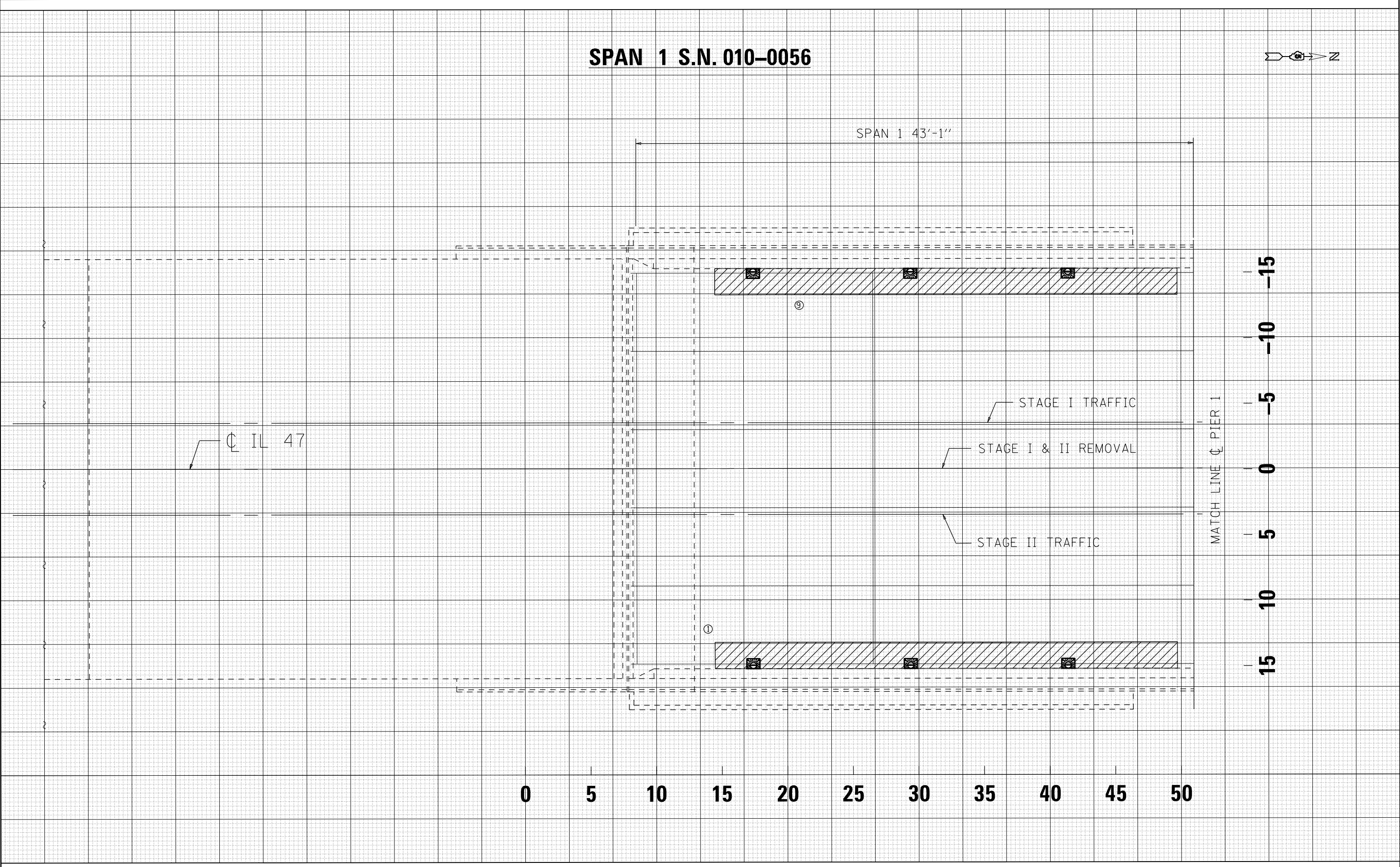


SPAN 1 43'-1"

DATE	BY
SURVEYED	TEMPLATED
PLOTTED	AREAS CHECKED
FINAL SURVEY NOTE BOOK NO.	

DATE	BY
SURVEYED	TEMPLATED
PLOTTED	AREAS CHECKED
ORIGINAL SURVEY NOTE BOOK NO.	

MODEL: SPODELMAMES
FILE NAME: p:\p11\m11\m11\010-0056\010-0056\Structures\70D63-SN-Structure\Plane.dgn



USER NAME = sherejrn	DESIGNED -	REVISED -
PLOT SCALE = 40.0360' / in.	DRAWN -	REVISED -
PLOT DATE = 3/9/2020	CHECKED -	REVISED -
	DATE -	REVISED -

**STATE OF ILLINOIS
DEPARTMENT OF TRANSPORTATION**

DETAIL OF DECK SLAB REPAIR (FULL DEPTH)
S.N. 010-0056

SCALE: 6 SHEET 8 OF 23 SHEETS STA. TO STA.

F.A.I. RTE.	SECTION	COUNTY	TOTAL SHEETS	SHEET NO.
72	(10-70)BR	CHAMPAIGN	33	15
CONTRACT NO. 70D63			ILLINOIS FED. AID PROJECT	

SPAN 2 S.N. 010-0056



SPAN 2 67'-3 1/2"

STRUCTURAL REPAIR OF CONCRETE < 5" (SEE SHEET 17 OF 23)

CL IL 47

STAGE I TRAFFIC

STAGE I & II REMOVAL

STAGE II TRAFFIC

MATCH LINE @ PIER 1

MATCH LINE @ PIER 2

0 5 10 15 20 25 30 35 40 45 50 55 60 65

-15
-10
-5
0
5
10
15

DATE	BY	SURVEYED	PLOTTED
		TEMPLATE	AREAS CHECKED
		NOTE BOOK	NO.

DATE	BY	ORIGINAL	SURVEYED
		NOTE BOOK	PLOTTED
		AREAS CHECKED	NO.

USER NAME = sherenjm	DESIGNED -	REVISED -
PLOT SCALE = 40.0360' / in.	DRAWN -	REVISED -
PLOT DATE = 3/9/2020	CHECKED -	REVISED -
	DATE -	REVISED -

**STATE OF ILLINOIS
DEPARTMENT OF TRANSPORTATION**

**DETAIL OF DECK SLAB REPAIR (FULL DEPTH)
S.N. 010-0056**

SCALE: 6 SHEET 9 OF 23 SHEETS STA. TO STA.

F.A.I. RTE.	SECTION	COUNTY	TOTAL SHEETS	SHEET NO.
72	(10-70)BR	CHAMPAIGN	33	16
CONTRACT NO. 70D63				

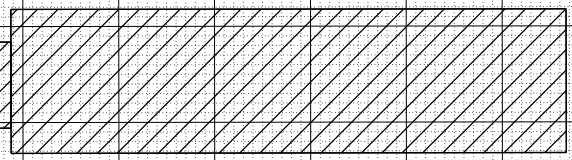
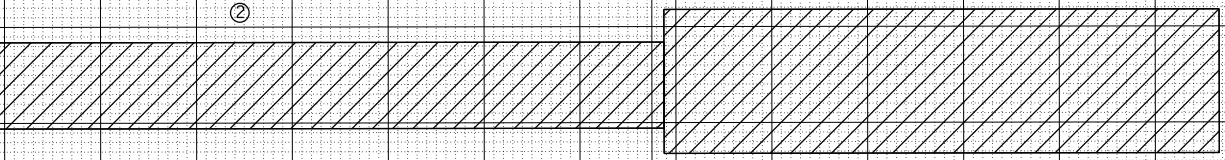
SPAN 3 S.N. 010-0056



SPAN 3 67'-3 1/2"

MATCH LINE @ PIER 2

MATCH LINE @ PIER 3



IL 47

STAGE I TRAFFIC

STAGE I & II REMOVAL

STAGE II TRAFFIC

0 5 10 15 20 25 30 35 40 45 50 55 60 65

-15
-10
-5
0
5
10
15

DATE	
BY	
SURVEYED	
PLOTTED	
TEMPLATE	
AREAS	
CHECKED	
FINAL SURVEY	
NOTE BOOK	
NO.	

DATE	
BY	
SURVEYED	
PLOTTED	
TEMPLATE	
AREAS	
CHECKED	
ORIGINAL SURVEY	
NOTE BOOK	
NO.	

USER NAME	= sherenjm
PLOT SCALE	= 40.0360' / in.
PLOT DATE	= 3/9/2020

DESIGNED -	
DRAWN -	
CHECKED -	
DATE -	

REVISED -	
REVISED -	
REVISED -	
REVISED -	

**STATE OF ILLINOIS
DEPARTMENT OF TRANSPORTATION**

**DETAIL OF DECK SLAB REPAIR (FULL DEPTH)
S.N. 010-0056**

SCALE: 6 SHEET 10 OF 23 SHEETS STA. TO STA.

F.A.I. RTE.	SECTION	COUNTY	TOTAL SHEETS	SHEET NO.
72	(10-70)BR	CHAMPAIGN	33	17
			CONTRACT NO. 70D63	
ILLINOIS FED. AID PROJECT				

PATCH NO.	SIZE		DECK SLAB REPAIR (FULL DEPTH T1)	DECK SLAB REPAIR (FULL DEPTH T2)
	LENGTH (FT)	WIDTH (FT)	SQ YD	SQ YD
1	35	2		7.8
2	103.3	3		34.4
3	19.3	5		10.7
4	35	2		7.8
5	35.6	3		11.9
6	35	2		7.8
7	3	3		1
8	5	3		1.7
9	35	2		7.8
10				
11				
12				
13				
14				
15				
16				
17				

TOTAL = 90.9

NOTES:

AREA OF DECK SLAB REPAIR HAVE BEEN ESTIMATED FROM MAY 20TH, 2019 DECK SURVEY. THE ACTUAL QUANTITY AND LOCATIONS SHALL BE DETERMINED BY THE ENGINEER. THE ENGINEER SHALL SHOW THE ACTUAL LOCATIONS OF THE DECK REPAIRS ON DECK PATCHING DETAIL SHEETS.

LONGITUDINAL REMOVAL FOR DECK SLAB REPAIR (FULL-DEPTH, TYPE II) MUST BE DONE IN ALTERNATING SECTIONS OF NO MORE THAN 10 FEET. ADJACENT SECTIONS MUST NOT BE REMOVED UNTIL BOTH OF THE FOLLOWING REQUIREMENTS ARE MET:

1. ATLEAST 72 HOURS SHALL HAVE ELAPSED FROM THE END OF THE PREVIOUS POUR, AND...
2. THE CONCRETE SHALL HAVE ATTAINED A MINIMUM MODULUS OF RUPTURE OF 650 PSI OR A MINIMUM COMPRESSIVE STRENGTH OF 3500 PSI.

BILL OF MATERIALS

ITEM	UNIT	TOTAL
DECK SLAB REPAIR (FULL DEPTH TYPE II)	SQ YD	90.9

MODEL: \$MODELNAME
FILE NAME: p:\albertson\cd\illinois.gov\PI\DOT\Documents\DOT - Offices\District 5\Projects\0570D63\CADData\Structures\70D63-Str-StructurePlans.dgn

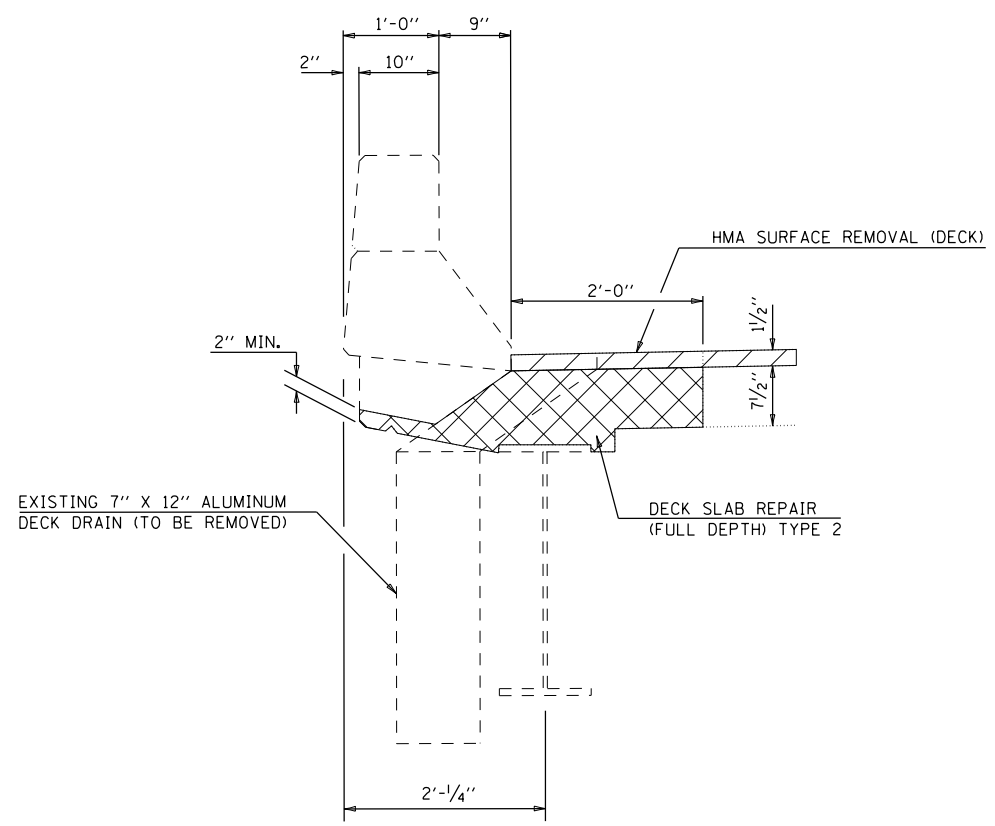
USER NAME = sherenjm	DESIGNED - JMS	REVISED -
PLOT SCALE = 40.0360' / in.	CHECKED - JMS	REVISED -
PLOT DATE = 3/9/2020	DATE - 061819	REVISED -

**STATE OF ILLINOIS
DEPARTMENT OF TRANSPORTATION**

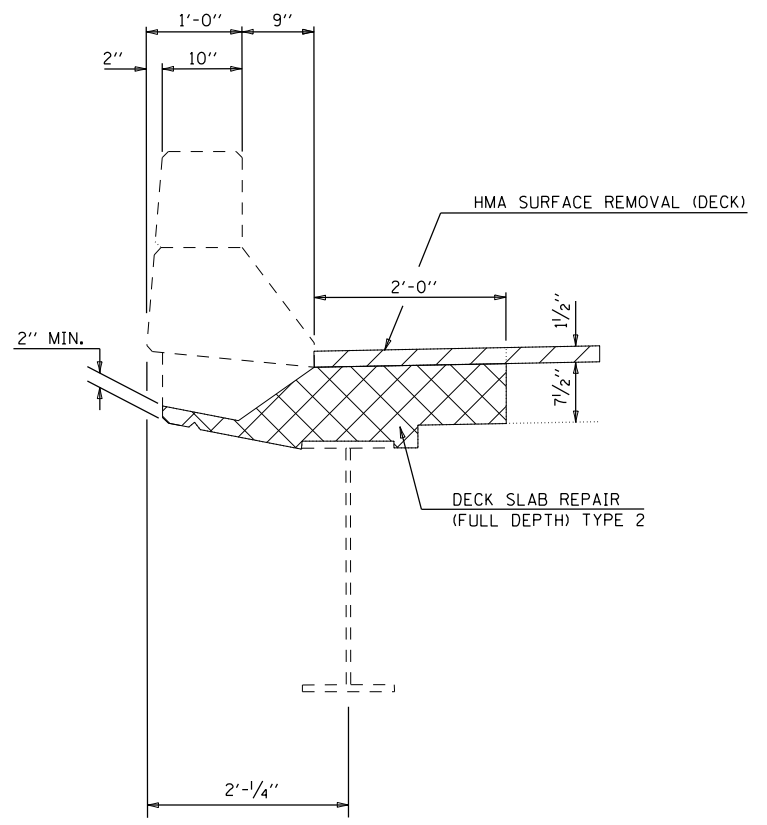
**SCHEDULES OF DECK SLAB REPAIR (FULL DEPTH)
S.N. 010-0056**

SCALE: NONE SHEET 12 OF 23 SHEETS STA. TO STA.

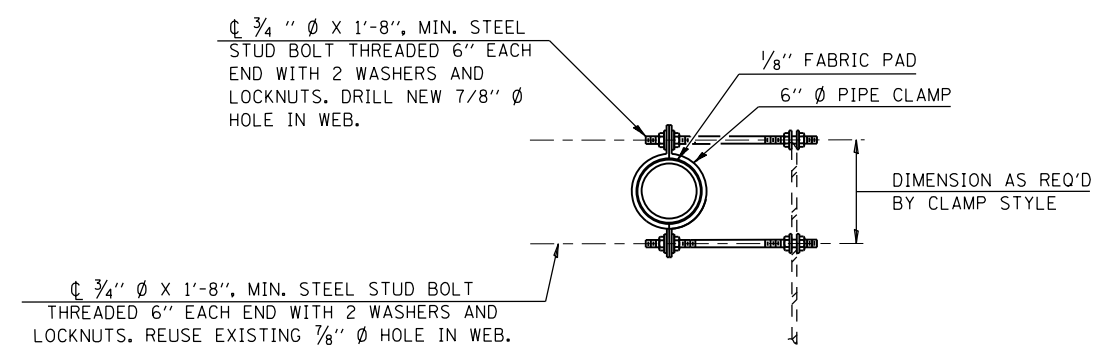
F.A.I. RTE.	SECTION	COUNTY	TOTAL SHEETS	SHEET NO.
72	(10-70)BR	CHAMPAIGN	33	19
CONTRACT NO. 70D63				
ILLINOIS FED. AID PROJECT				



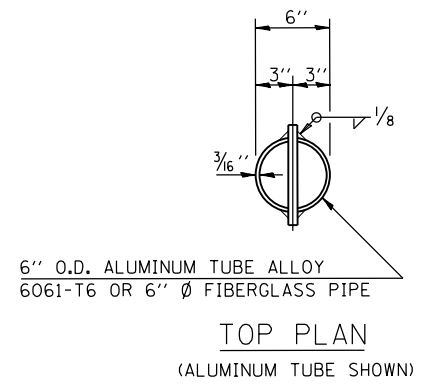
SECTION AT EXISTING DECK DRAIN



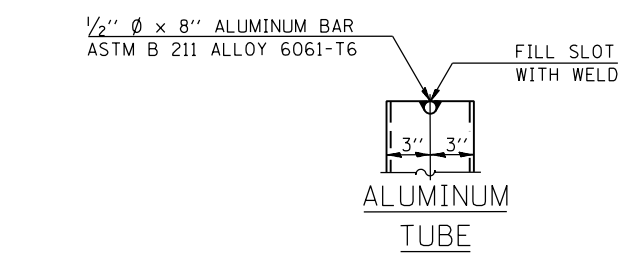
SECTION BETWEEN EXISTING DECK DRAIN



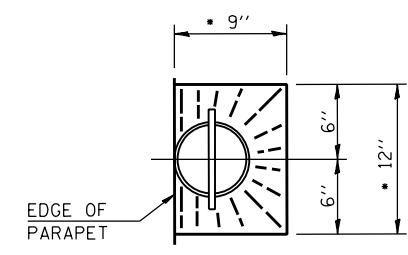
SECTION A-A
SHOWING PIPE CLAMP ANCHORAGE STYLE



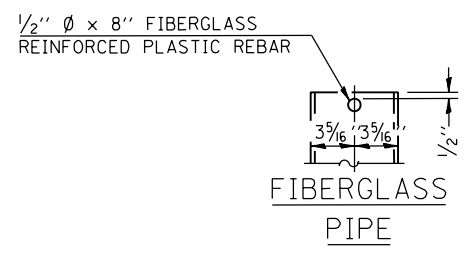
TOP PLAN
(ALUMINUM TUBE SHOWN)



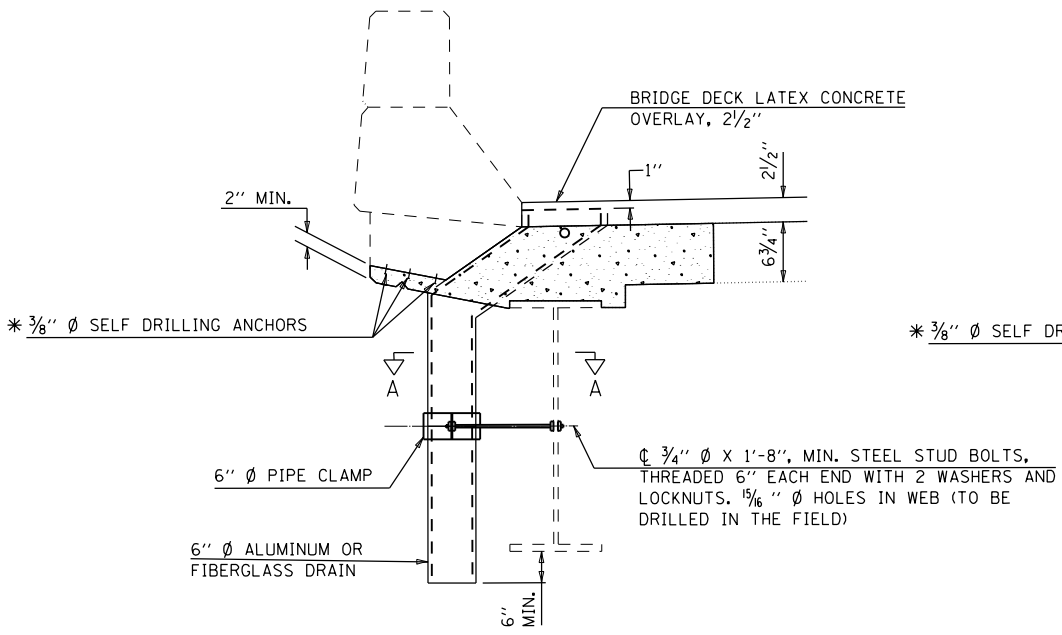
ALUMINUM TUBE



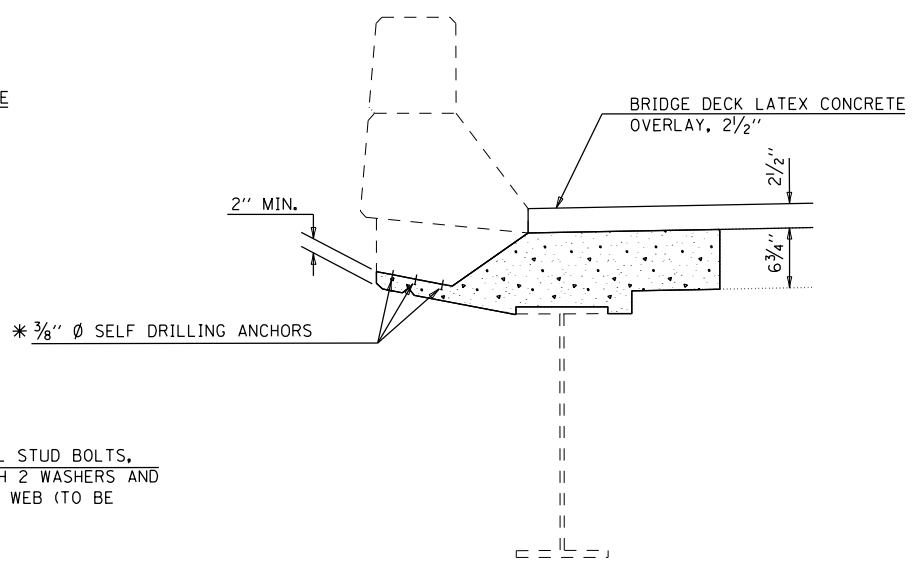
TOP PLAN
• SLOPE TO DRAIN



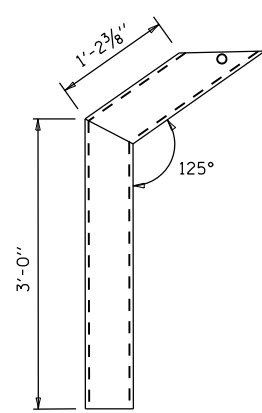
FIBERGLASS PIPE



SECTION AT PROPOSED FLOOR DRAIN



SECTION BETWEEN PROPOSED FLOOR DRAIN
(SEE PATCH LOCATIONS 1,9,4,6)



FLOOR DRAIN

NOTES:

- FLOOR DRAINS NEED NOT BE PAINTED.
- FIBERGLASS PIPE SHALL CONFORM TO ASTM D 2996, WITH SHORT-TIME RUPTURE STRENGTH HOOP TENSILE STRESS OF 30,000 P.S.I. MINIMUM.
- GALVANIZE CLAMPING DEVICE AND ALL STUD BOLTS, WASHERS AND NUTS ACCORDING TO AASHTO M232.
- ALL DIMENSIONS SHALL BE FIELD VERIFIED BY THE CONTRACTOR PRIOR TO ORDERING OF MATERIALS.
- * 3/8" Ø SELF DRILLING ANCHORS TO BE USED AT LOCATIONS DETERMINED BY ENGINEER. COST INCLUDED WITH DECK SLAB REPAIR OF THE TYPE SPECIFIED.
- COST OF EXISTING DECK DRAIN REMOVAL INCLUDED IN DECK SLAB REPAIR.

BILL OF MATERIALS

ITEM	UNIT	TOTAL
FLOOR DRAINS	EACH	12.0

MODEL: \$MODELNAME\$ FILE NAME: p:\altemcom.dwg I:\ms\gov\p\DOT\Documents\DOT - Offices\District 5\Projects\0520063\CADData\Structures\70D63-Struct\Plans.dgn

USER NAME = sherenjm	DESIGNED - JMS	REVISED -
PLOT SCALE = 40.0360 ' / in.	DRAWN -	REVISED -
PLOT DATE = 3/9/2020	CHECKED - JMS	REVISED -
	DATE - 061819	REVISED -

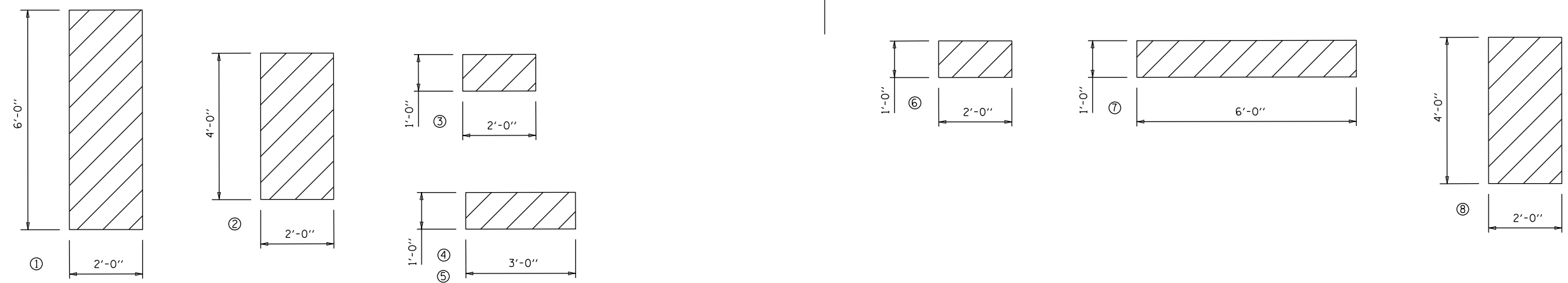
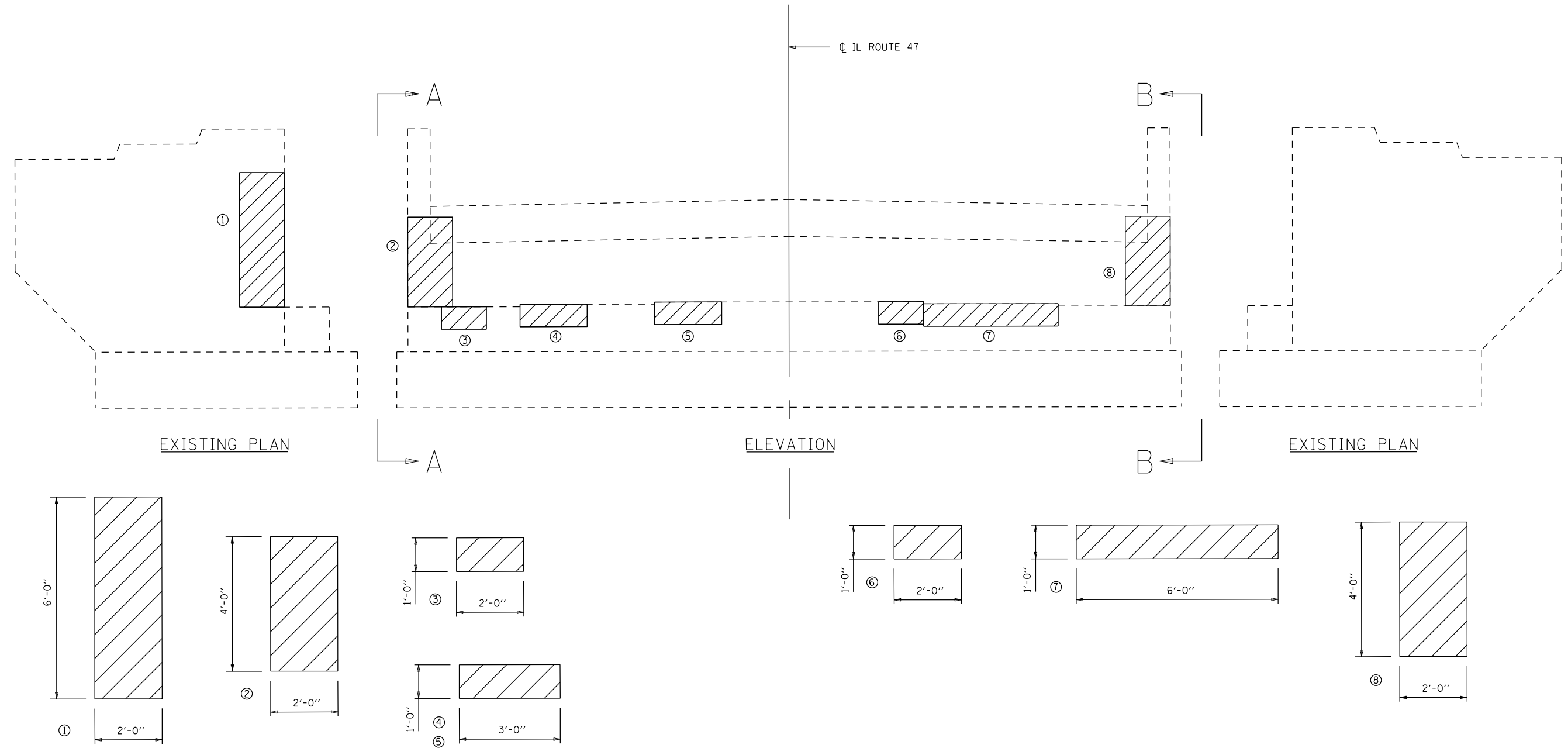
STATE OF ILLINOIS
DEPARTMENT OF TRANSPORTATION

DETAIL OF PATCHING AT DECK DRAINS
S.N. 010-0056

SCALE: NONE SHEET 13 OF 23 SHEETS STA. TO STA.

F.A.I. RTE. 72	SECTION (10-70)BR	COUNTY CHAMPAIGN	TOTAL SHEETS 33	SHEET NO. 20
CONTRACT NO. 70D63				ILLINOIS FED. AID PROJECT

DETAIL OF NORTH ABUTMENT (NO. 2 LOOKING NORTH)



BILL OF MATERIALS

ITEM	UNIT	TOTAL
STRUCTURAL REPAIR OF CONC. DEPTH = < 5"	SQ FT	44.0

MODEL: \$MODELNAME
 FILE NAME: p:\altemcom.edu\illinois.gov\PIV\DOT\Documents\DOT - Offices\District 5\Projects\0570D63\CADData\Structures\70D63-sh-StructurePlans.dgn

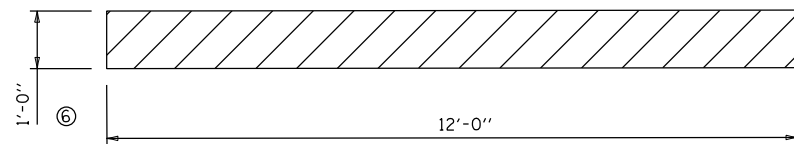
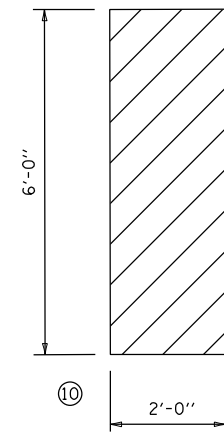
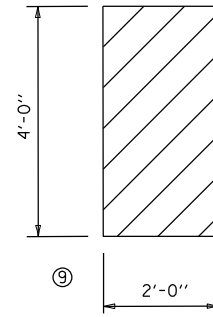
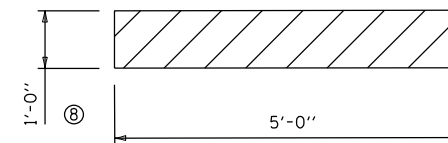
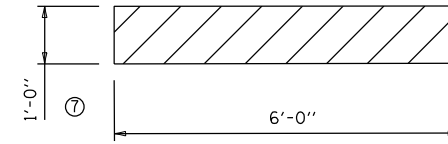
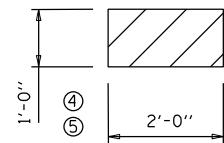
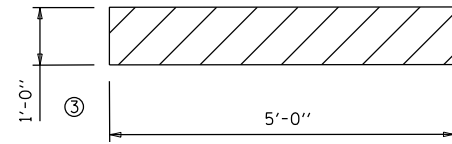
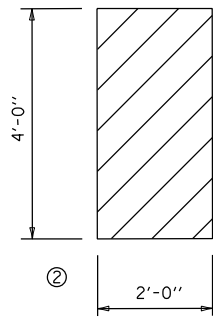
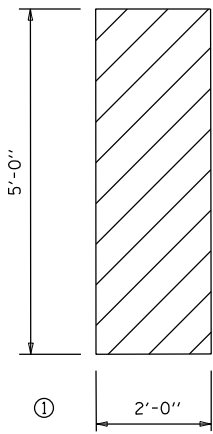
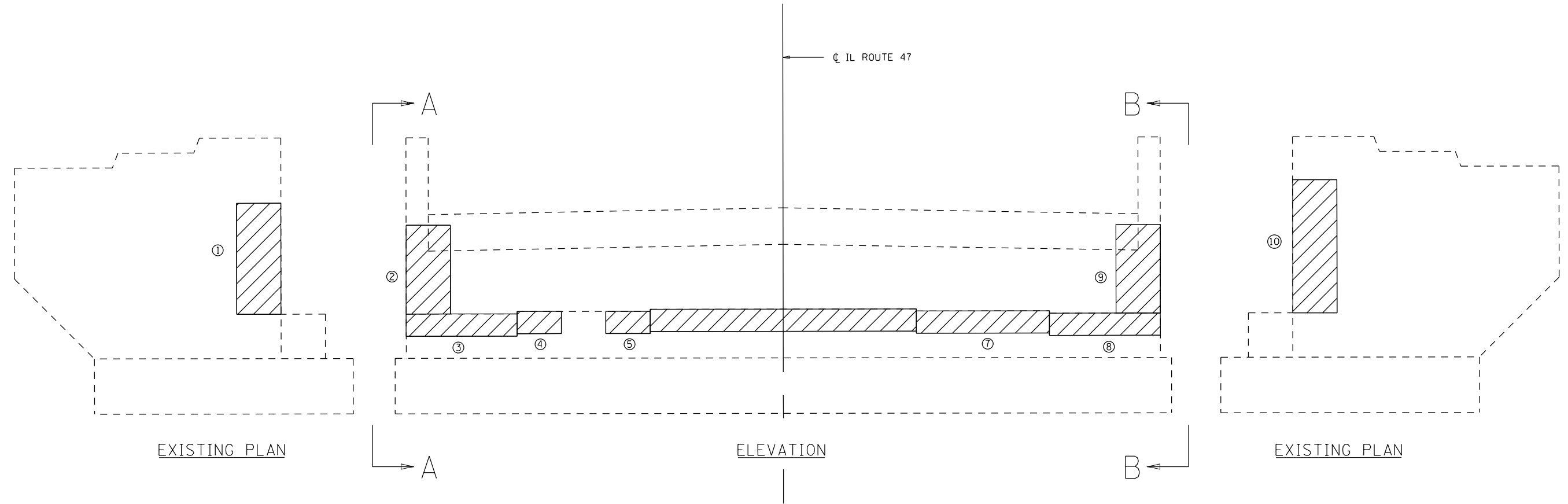
USER NAME = sherenjm	DESIGNED - JMS	REVISED -
PLOT SCALE = 40.0360' / in.	CHECKED - JMS	REVISED -
PLOT DATE = 3/9/2020	DATE - 061819	REVISED -

**STATE OF ILLINOIS
DEPARTMENT OF TRANSPORTATION**

DETAIL STRUCTURAL REPAIR OF CONCRETE (DEPTH EQUAL TO OR LESS THAN 5 INCHES) S.N. 010-0056			
SCALE: NONE	SHEET 14	OF 23 SHEETS	STA. TO STA.

F.A.I. RTE. 72	SECTION (10-70)BR	COUNTY CHAMPAIGN	TOTAL SHEETS 33	SHEET NO. 21
CONTRACT NO. 70D63				
ILLINOIS FED. AID PROJECT				

DETAIL OF SOUTH ABUTMENT (NO. 1 LOOKING SOUTH)



BILL OF MATERIALS

ITEM	UNIT	TOTAL
STRUCTURAL REPAIR OF CONC. =< 5"	SQ FT	70.0

MODEL: \$MODELNAME\$ FILE NAME: p:\data\mcom\edu\illinois.gov\PI\DOT\Documents\DOT - Offices\District 5\Projects\0570D63\CADData\Structures\70D63-Str-StructurePlans.dgn

USER NAME = sherenjm	DESIGNED - JMS	REVISED -
PLOT SCALE = 40.0360' / in.	CHECKED - JMS	REVISED -
PLOT DATE = 3/9/2020	DATE - 061819	REVISED -

**STATE OF ILLINOIS
DEPARTMENT OF TRANSPORTATION**

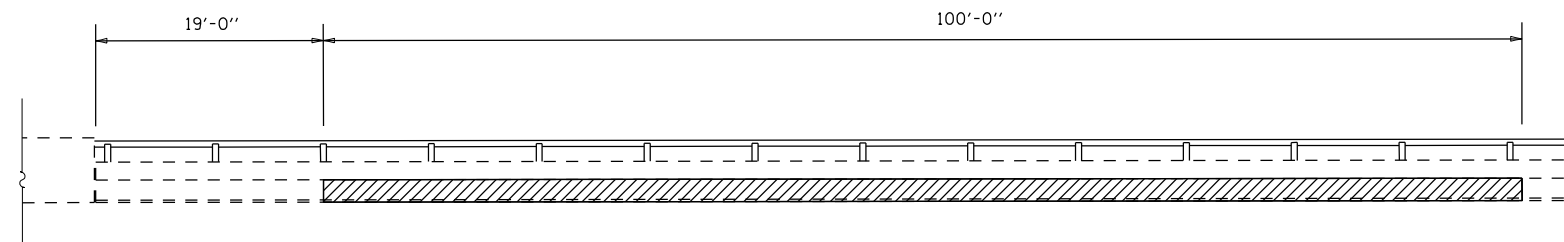
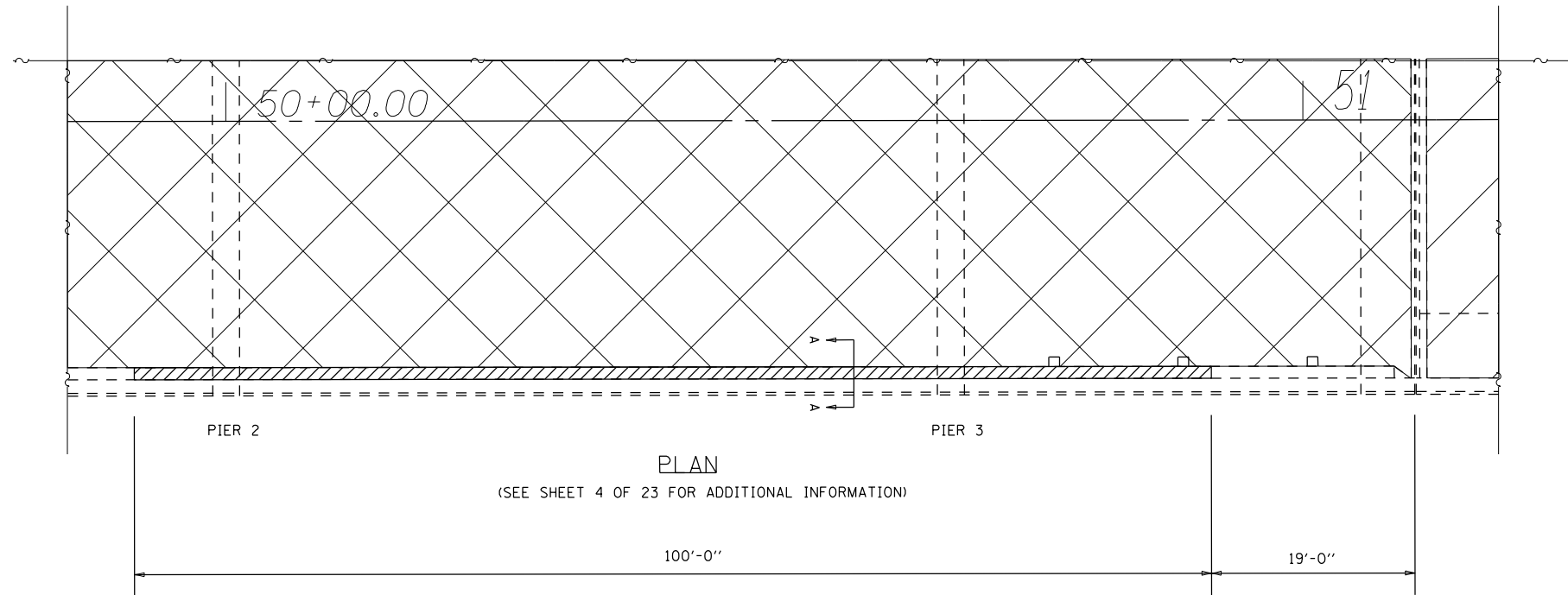
**DETAIL STRUCTURAL REPAIR OF CONCRETE
(DEPTH EQUAL TO OR LESS THAN 5 INCHES) S.N. 010-0056**

SCALE: NONE SHEET 15 OF 23 SHEETS STA. TO STA.

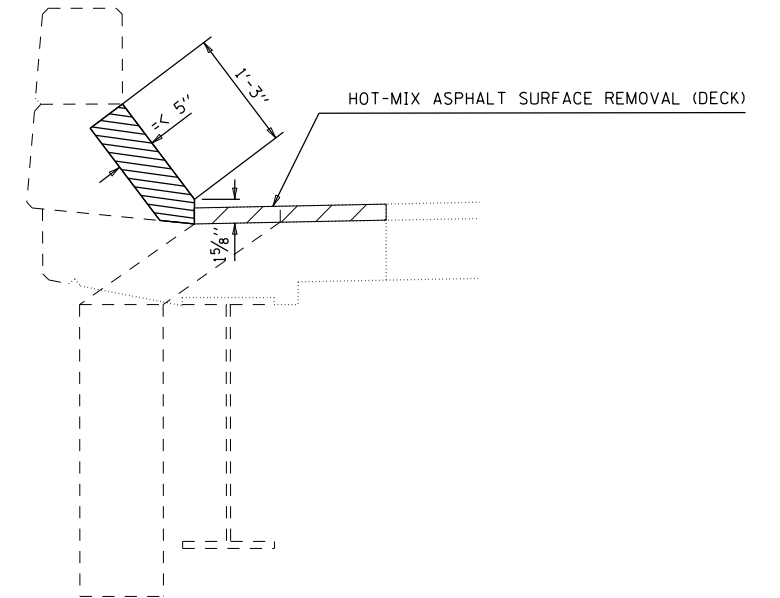
F.A.I. RTE. 72	SECTION (10-70)BR	COUNTY CHAMPAIGN	TOTAL SHEETS 33	SHEET NO. 22
ILLINOIS FED. AID PROJECT			CONTRACT NO. 70D63	



DETAIL OF EAST PARAPET WALL FACE



ELEVATION



SECTION A-A THRU PARAPET

BILL OF MATERIALS

ITEM	UNIT	TOTAL
STRUCTURAL REPAIR OF CONC. DEPTH = < 5"	SQ FT	125.0
PROTECTIVE COAT	SQ YD	14.0

MODEL: \$MODELNAME
 FILE NAME: p:\albertson.com.edu\illinois.gov\PI\DOT\Documents\DOT - Offices\District 5\Projects\0570063\CADData\Structures\70D63-Ht-StructurePlans.dgn

USER NAME = sherenjm	DESIGNED - JMS	REVISED -
PLOT SCALE = 40.0360' / in.	CHECKED - JMS	REVISED -
PLOT DATE = 3/9/2020	DATE - 061819	REVISED -

STATE OF ILLINOIS
DEPARTMENT OF TRANSPORTATION

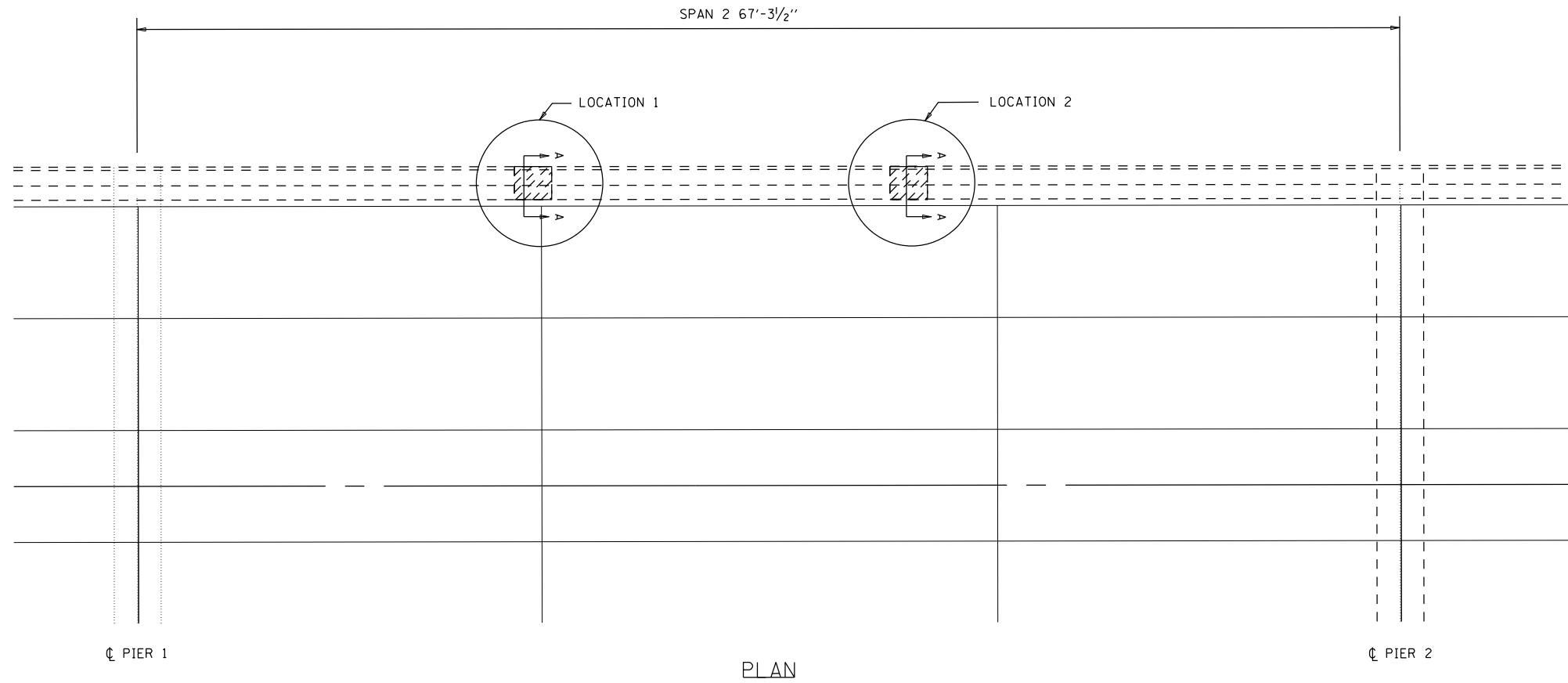
DETAIL STRUCTURAL REPAIR OF CONCRETE
(DEPTH EQUAL TO OR LESS THAN 5 INCHES) S.N. 010-0056

SCALE: NONE SHEET 16 OF 23 SHEETS STA. TO STA.

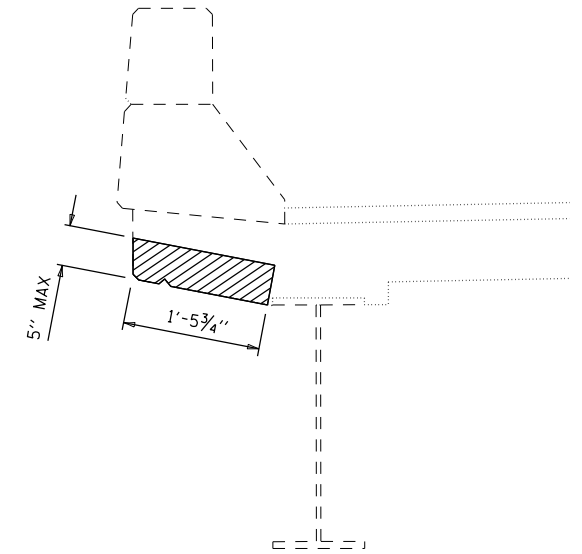
F.A.I. RTE.	SECTION	COUNTY	TOTAL SHEETS	SHEET NO.
72	(10-70)BR	CHAMPAIGN	33	23
CONTRACT NO. 70D63				
ILLINOIS FED. AID PROJECT				



DETAIL OF WEST HUB GUARD



PLAN



SECTION A-A THRU PARAPET

BILL OF MATERIALS

ITEM	UNIT	TOTAL
STRUCTURAL REPAIR OF CONC. DEPTH = < 5"	SQ FT	6.0

MODEL: \$MODELNAME
 FILE NAME: p:\alumni\com.edu.illinois.gov\PIV\DOT\Documents\DOT - Offices\District 5\Projects\0570063\CADData\Structures\70D63-H-StructurePlans.dgn

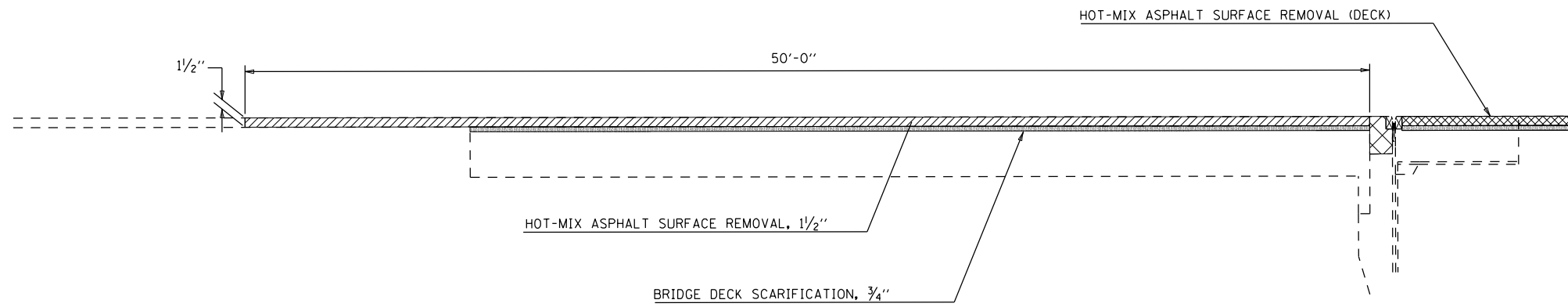
USER NAME = sherenjm	DESIGNED - JMS	REVISED -
PLOT SCALE = 40.0360' / in.	CHECKED - JMS	REVISED -
PLOT DATE = 3/9/2020	DATE - 061819	REVISED -

STATE OF ILLINOIS
DEPARTMENT OF TRANSPORTATION

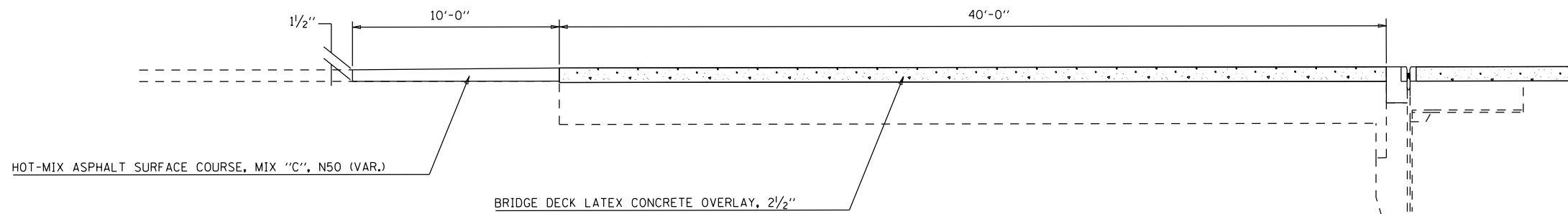
DETAIL STRUCTURAL REPAIR OF CONCRETE
(DEPTH EQUAL TO OR LESS THAN 5 INCHES) S.N. 010-0056

SCALE: NONE SHEET 17 OF 23 SHEETS STA. TO STA.

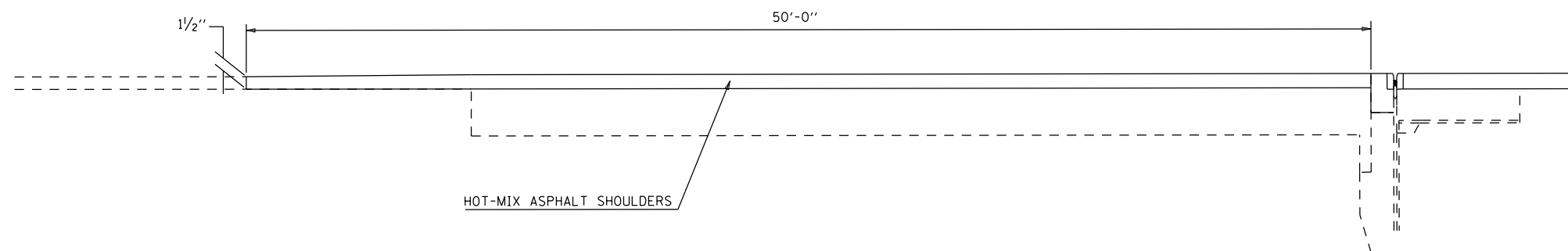
F.A.I. RTE.	SECTION	COUNTY	TOTAL SHEETS	SHEET NO.
72	(10-70)BR	CHAMPAIGN	33	24
CONTRACT NO. 70D63			ILLINOIS FED. AID PROJECT	



DETAIL OF REMOVAL AT APPROACH PAVEMENT



DETAIL OF PROPOSED WEARING SURFACE AT APPROACH PAVEMENT



DETAIL OF HOT-MIX ASPHALT SHOULDERS AT APPROACH PAVEMENT

MODEL: \$MODELNAME
FILE NAME: p:\alumni\com.edu.illinois.gov\PI\DOT\Documents\DOT - Offices\District 3\Projects\DS70D63\CADData\Structures\70D63-Ht-StructurePlans.dgn

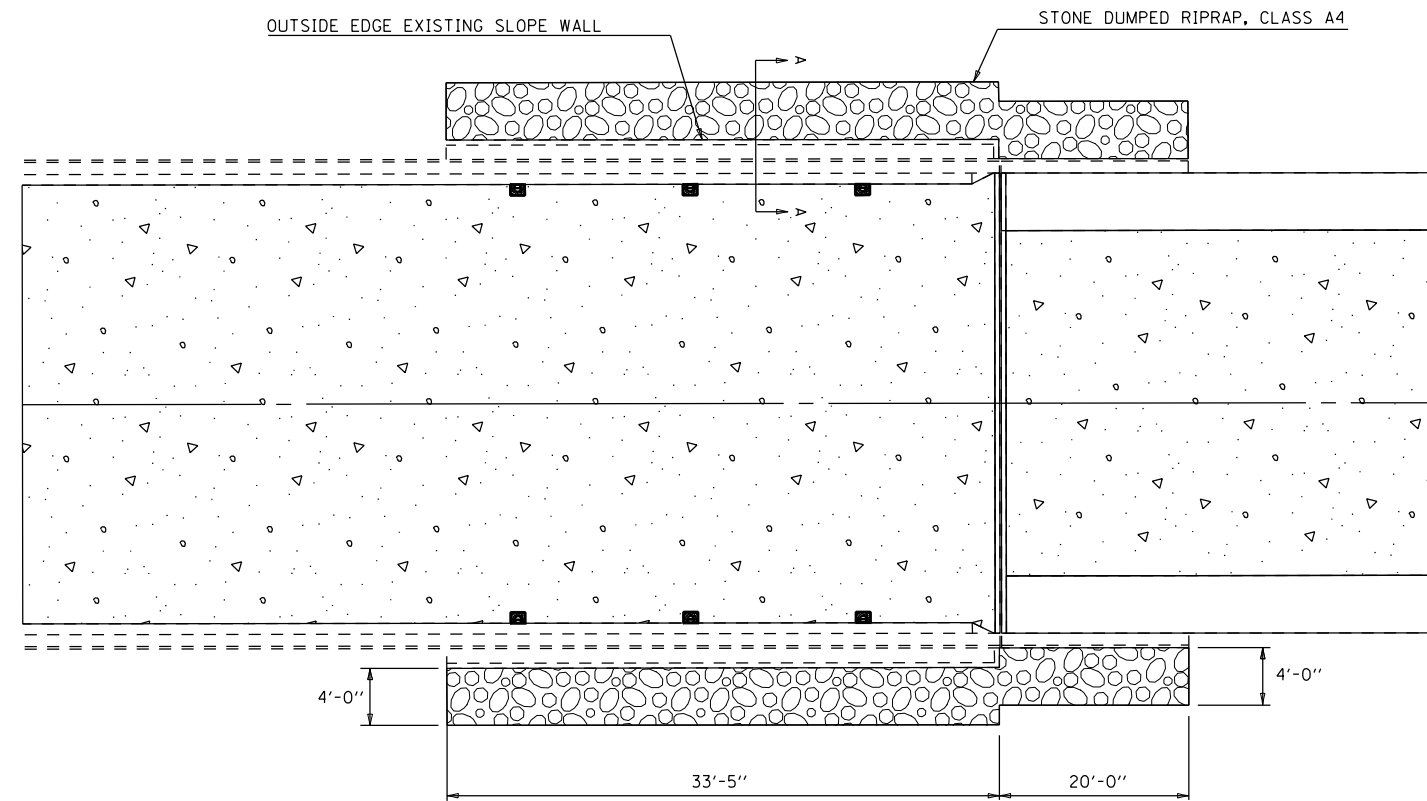
USER NAME = sherenjm	DESIGNED - JMS	REVISED -
PLOT SCALE = 40.0360' / in.	CHECKED - JMS	REVISED -
PLOT DATE = 3/9/2020	DATE - 061819	REVISED -

STATE OF ILLINOIS
DEPARTMENT OF TRANSPORTATION

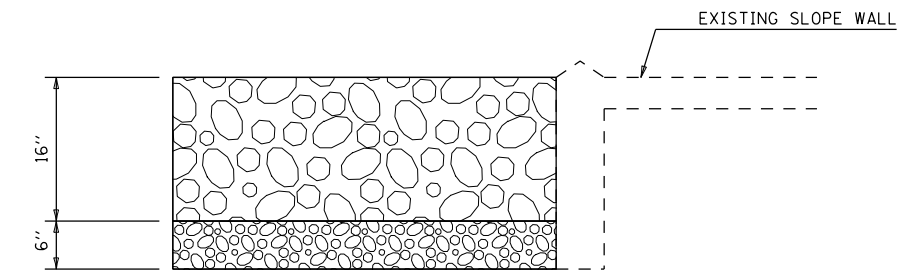
DETAIL HOT-MIX ASPHALT APPROACH PAVEMENT

SCALE: NONE SHEET 18 OF 23 SHEETS STA. TO STA.

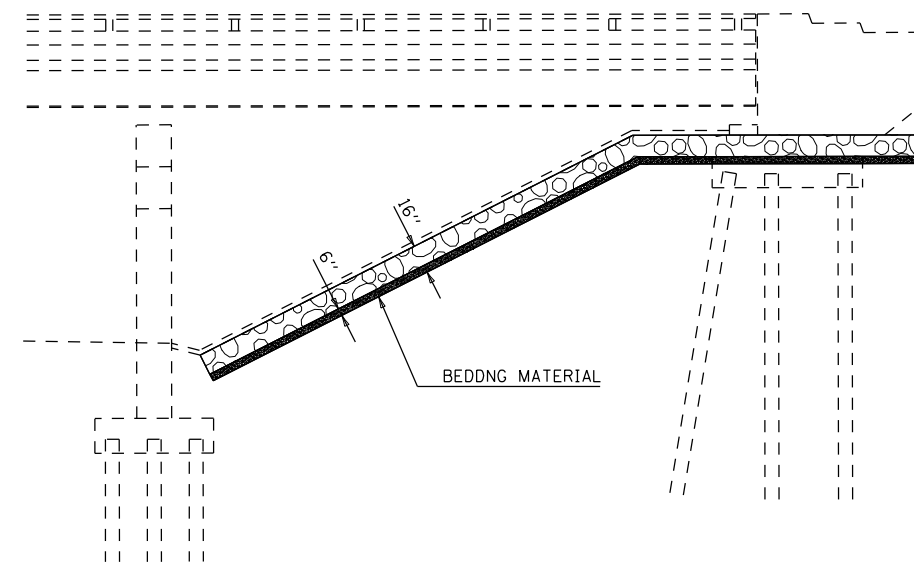
F.A.I. RTE.	SECTION	COUNTY	TOTAL SHEETS	SHEET NO.
72	(10-70)BR	CHAMPAIGN	33	25
CONTRACT NO. 70D63				
ILLINOIS FED. AID PROJECT				



PLAN AT ABUTMENT (TYPICAL)



SECTION A-A



ELEVATION AT ABUTMENT (TYPICAL)

BILL OF MATERIALS

ITEM	UNIT	TOTAL
STONE DUMPED RIPRAP, CLASS A4	SQ YD	96.0

MODEL: \$MODELNAME
FILE NAME: p:\jblmcom.edu.illinois.gov\PI\DOT\Documents\DOT - Offices\District 5\Projects\0570D63\CADData\Structures\70D63-sh-StructurePlans.dgn

USER NAME = sherenjm	DESIGNED - JMS	REVISED -
PLOT SCALE = 40.0360' / in.	CHECKED - JMS	REVISED -
PLOT DATE = 3/9/2020	DATE - 061819	REVISED -

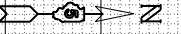
STATE OF ILLINOIS
DEPARTMENT OF TRANSPORTATION

DETAIL STONE DUMPED RIPRAP
S.N. 010-0056

SCALE: NONE SHEET 19 OF 23 SHEETS STA. TO STA.

F.A.I. RTE.	SECTION	COUNTY	TOTAL SHEETS	SHEET NO.
72	(10-70)BR	CHAMPAIGN	33	26
CONTRACT NO. 70D63				
ILLINOIS FED. AID PROJECT				

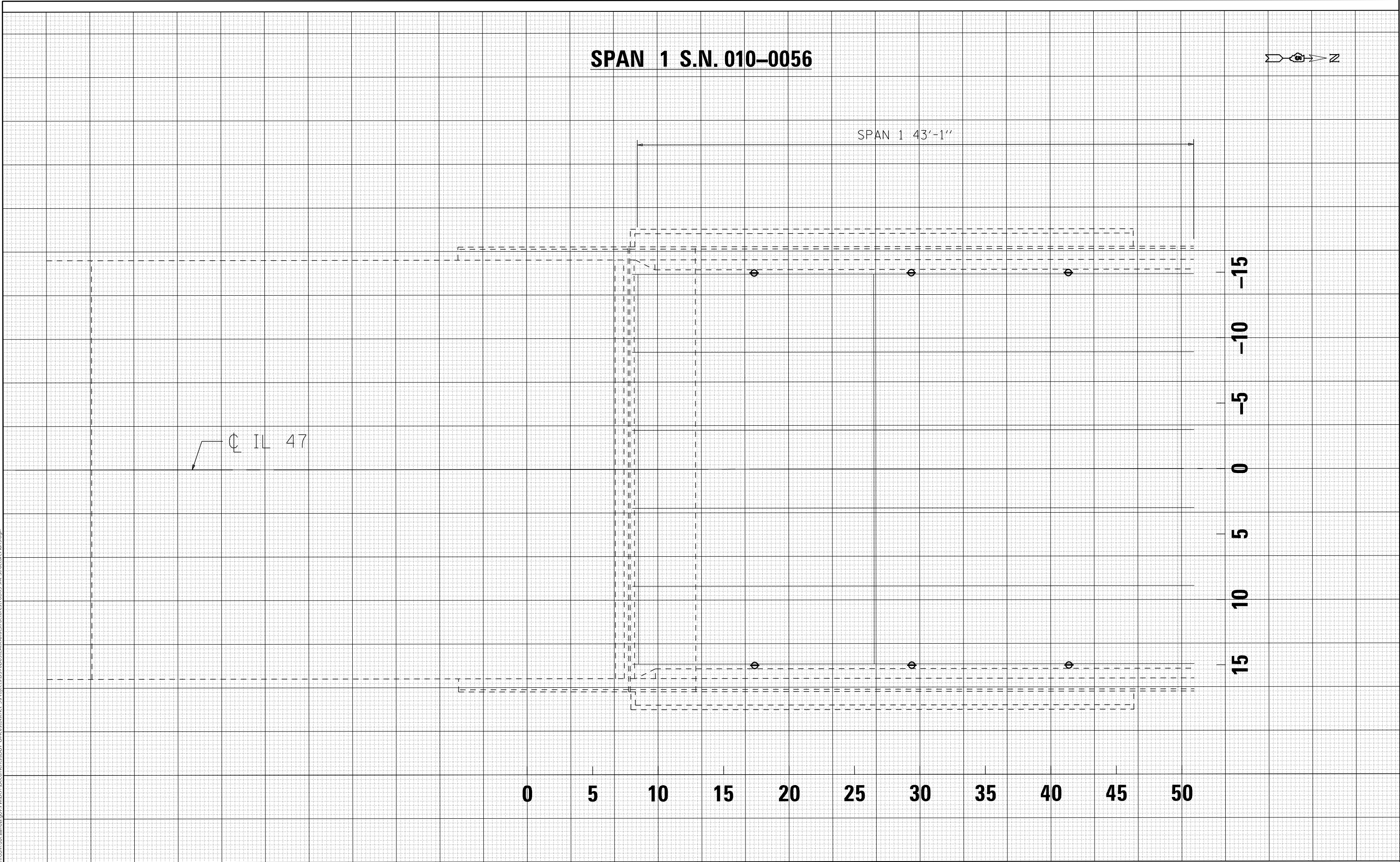
SPAN 1 S.N. 010-0056



DATE	BY	SURVEYED	PLOTTED
		TEMPLATE	AREAS CHECKED
FINAL SURVEY NO.	NOTE BOOK NO.	AREAS CHECKED	

DATE	BY	SURVEYED	PLOTTED
		TEMPLATE	AREAS CHECKED
ORIGINAL SURVEY NO.	NOTE BOOK NO.	AREAS CHECKED	

MODEL: SPODE\MAMES
 FILE NAME: p:\p1\l1\m\p1\illinois.gov\p1\DOT\Documents\DOT_Offices\Bretter_S\Projects\DS70D63\CAD\Drawn\Structures\70D63-SN-Structure\Plane.dgn



USER NAME = sherenjm
 PLOT SCALE = 40.0360' / in.
 PLOT DATE = 3/9/2020

DESIGNED -
 DRAWN -
 CHECKED -
 DATE -

REVISED -
 REVISED -
 REVISED -
 REVISED -

**STATE OF ILLINOIS
 DEPARTMENT OF TRANSPORTATION**

**AS-BUILT DETAIL OF DECK SLAB REPAIR (FULL DEPTH)
 S.N. 010-0056**

SCALE: 6 SHEET 20 OF 23 SHEETS STA. TO STA.

F.A.I. RTE. 72	SECTION (10-70)BR	COUNTY CHAMPAIGN	TOTAL SHEETS 33	SHEET NO. 27
				CONTRACT NO. 70D63
ILLINOIS FED. AID PROJECT				

SPAN 2 S.N. 010-0056

SPAN 2 67-3/2"

IL 47

DATE	BY	SURVEYED	PLOTTED	TEMPLATE	AREAS CHECKED
FINAL SURVEY NO.					

DATE	BY	SURVEYED	PLOTTED	TEMPLATE	AREAS CHECKED
ORIGINAL SURVEY NO.					

MODEL: S:\MODEL\NAMES
FILE NAME: p:\p1\l1\m\m\o\illinois\p\p\DOT\Documents\DOT_Offices\Bretet_S\Projects\DS70D63\CAD\Draw\Structures\70D63-SP-Structure\Plane.dgn

0 5 10 15 20 25 30 35 40 45 50 55 60 65

15 10 5 0 -5 -10 -15

USER NAME = shererjm	DESIGNED -	REVISED -
	DRAWN -	REVISED -
PLOT SCALE = 40.0360' / in.	CHECKED -	REVISED -
PLOT DATE = 3/9/2020	DATE -	REVISED -

STATE OF ILLINOIS
DEPARTMENT OF TRANSPORTATION

AS-BUILT DETAIL OF DECK SLAB REPAIR (FULL DEPTH)
S.N. 010-0056

SCALE: 6 SHEET 21 OF 23 SHEETS STA. TO STA.

F.A.I. RTE. 72	SECTION (10-70)BR	COUNTY CHAMPAIGN	TOTAL SHEETS 33	SHEET NO. 28
CONTRACT NO. 70D63				
ILLINOIS FED. AID PROJECT				

SPAN 3 S.N. 010-0056

SPAN 3 67'-3 1/2"

IL 47

DATE	
BY	
SURVEYED	
PLOTTED	
TEMPLATE	
AREAS	
AREAS CHECKED	
FINAL SURVEY	
NOTE BOOK	
NO.	

DATE	
BY	
SURVEYED	
PLOTTED	
TEMPLATE	
AREAS	
AREAS CHECKED	
ORIGINAL SURVEY	
NOTE BOOK	
NO.	

MODEL: S:\MODEL\NAMES
FILE NAME: p:\p1\l1\m1\m1.dwg
I:\Illinois\gov\PIV\DOT\Documents\DOT_Offices\BIBret\3\Projects\DS70D63\CAD\Draw\Structures\70D63-SP-Structure\Plane.dgn

0 5 10 15 20 25 30 35 40 45 50 55 60 65

-15
-10
-5
0
5
10
15

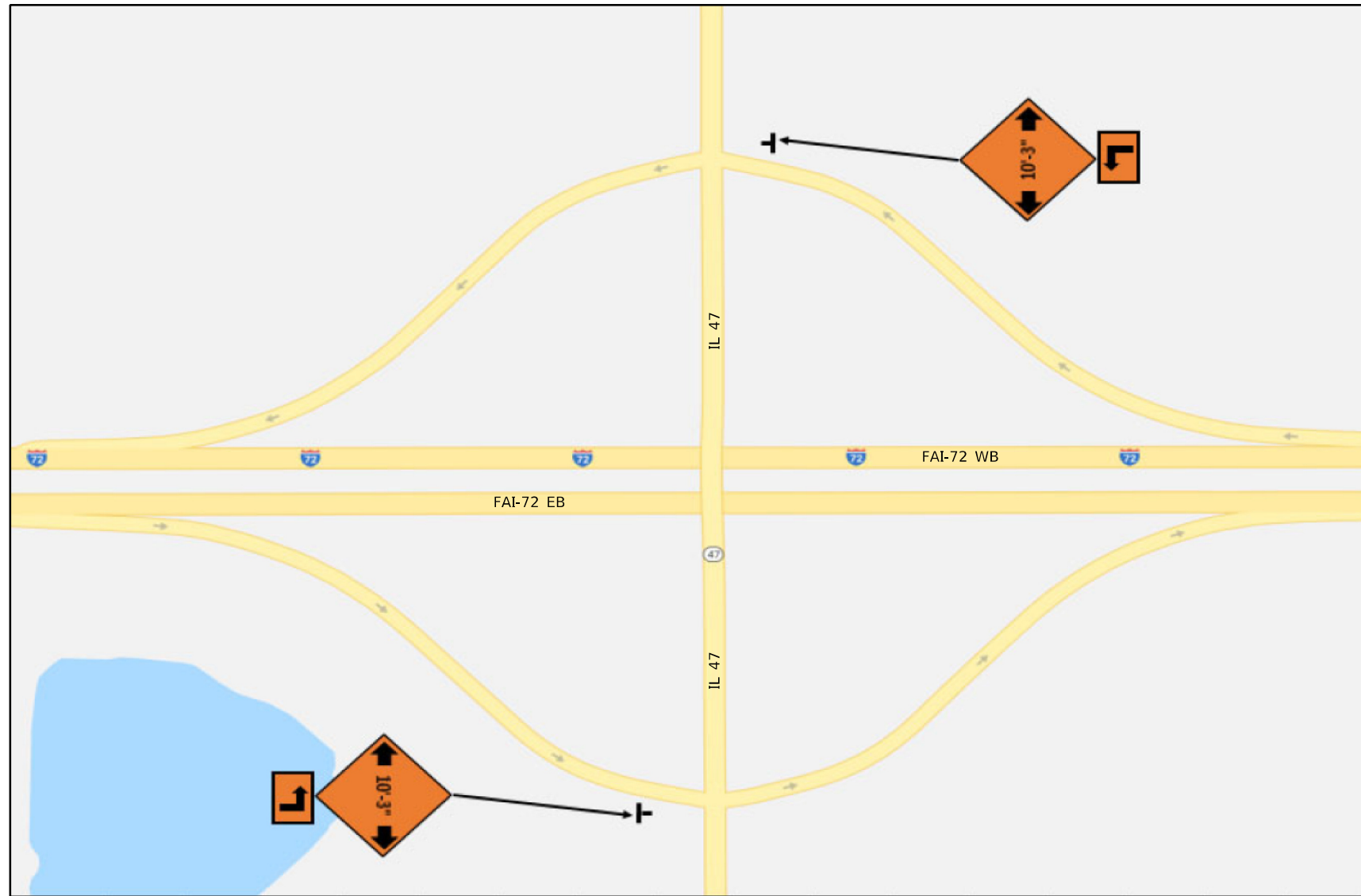
USER NAME = sherenjm	DESIGNED -	REVISED -
	DRAWN -	REVISED -
PLOT SCALE = 40.0360' / in.	CHECKED -	REVISED -
PLOT DATE = 3/9/2020	DATE -	REVISED -

**STATE OF ILLINOIS
DEPARTMENT OF TRANSPORTATION**

**AS-BUILT DETAIL OF DECK SLAB REPAIR (FULL DEPTH)
S.N. 010-0056**

SCALE: 6 SHEET 22 OF 23 SHEETS STA. TO STA.

F.A.I. RTE.	SECTION	COUNTY	TOTAL SHEETS	SHEET NO.
72	(10-70)BR	CHAMPAIGN	33	29
			CONTRACT NO. 70D63	
ILLINOIS FED. AID PROJECT				



MODEL: \\MODELS\MAPS
 FILE: Maps: p:\up\h\com.dal Illinois\p\WIDOT\Documents\DOT_Offices\Chartet_S\Projects\DE70063\CADD\InfoStructures\70063-shr-Design\Detail.dgn

USER NAME = shererjm	DESIGNED -	REVISED -
	DRAWN -	REVISED -
PLOT SCALE = 40.0000 ' / in.	CHECKED -	REVISED -
PLOT DATE = 3/9/2020	DATE -	REVISED -

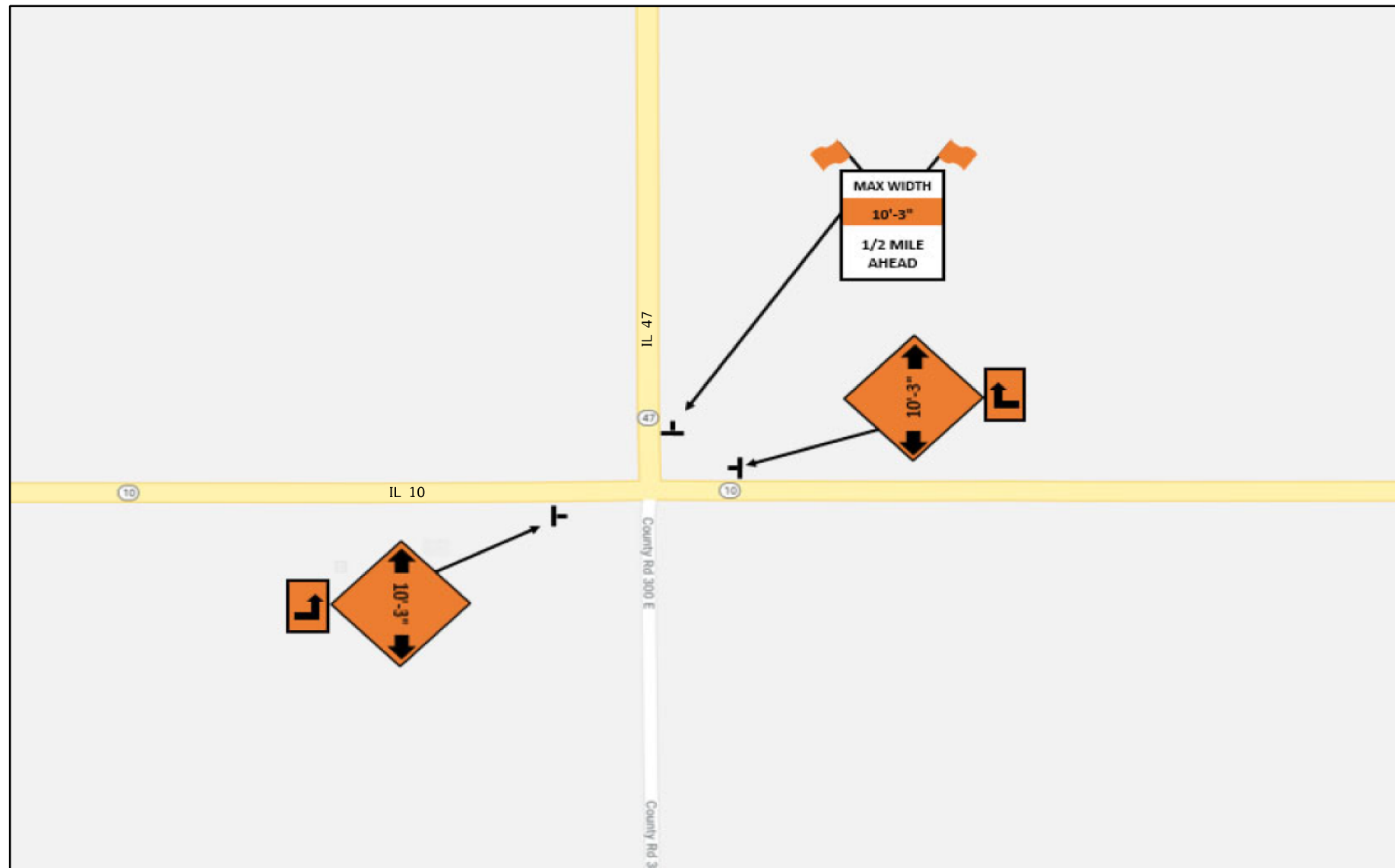
**STATE OF ILLINOIS
 DEPARTMENT OF TRANSPORTATION**

**DETAIL OF WIDTH RESTRICTION SIGNING
 S.N. 010-0056**

SCALE: SHEET 1 OF 3 SHEETS STA. TO STA.

F.A.I. RTE.	SECTION	COUNTY	TOTAL SHEETS	SHEET NO.
72	(10-70)BR	CHAMPAIGN	33	31
			CONTRACT NO. 70D63	
ILLINOIS FED. AID PROJECT				

MODEL: \\MODELS\MHFS
 FILE: \\models - pld\pdm\com.dwg Illinois\gis\PHWDOT\Documents\DOT_Offices\District 5\Projects\DE70063\CADD\AutoStructures\70063-shr-Design\Detail.dgn



USER NAME = shererjm	DESIGNED -	REVISED -
	DRAWN -	REVISED -
PLOT SCALE = 40.0000 ' / in.	CHECKED -	REVISED -
PLOT DATE = 3/9/2020	DATE -	REVISED -

**STATE OF ILLINOIS
 DEPARTMENT OF TRANSPORTATION**

**DETAIL OF WIDTH RESTRICTION SIGNING
 S.N. 010-0056**

SCALE: SHEET 2 OF 3 SHEETS STA. TO STA.

F.A.I. RTE.	SECTION	COUNTY	TOTAL SHEETS	SHEET NO.
72	(10-70)BR	CHAMPAIGN	33	32
			CONTRACT NO. 70D63	
ILLINOIS FED. AID PROJECT				

