

| SUMMARY OF QUANTITIES | | | TOTAL QUANTITIES | CONSTRUCTION TYPE CODE | |
|-----------------------|---|------------------|------------------|----------------------------------|----------------------------------|
| CODE NO | ITEM | UNIT | | 0005 80% FEDERAL 20% STATE | 0047 80% FEDERAL 20% STATE |
| * X7830070 | GROOVING FOR RECESSED PAVEMENT MARKING 5" | FOOT | 6471 | 6471 | |
| * X7830074 | GROOVING FOR RECESSED PAVEMENT MARKING 7" | FOOT | 200 | 200 | |
| * X7830076 | GROOVING FOR RECESSED PAVEMENT MARKING 9" | FOOT | 112 | 112 | |
| * X7830078 | GROOVING FOR RECESSED PAVEMENT MARKING 13" | FOOT | 1106 | 1106 | |
| * X7830090 | GROOVING FOR RECESSED PAVEMENT MARKING 25" | FOOT | 35 | 35 | |
| Z0016200 | DECK SLAB REPAIR (PARTIAL) | SQ YD | 38 | | 38 |
| Z0016202 | DECK SLAB REPAIR (PARTIAL) (SPECIAL) | SQ YD | 38 | | 38 |
| Z0033700 | LONGITUDINAL JOINT SEALANT | FOOT | 21220 | 21220 | |
| Z0049799 | PROTECTING OR RESETTING SURVEY MARKERS | EACH | 11 | 11 | |

| SUMMARY OF QUANTITIES | | | TOTAL QUANTITIES | CONSTRUCTION TYPE CODE | |
|-----------------------|------|------|------------------|----------------------------------|----------------------------------|
| CODE NO | ITEM | UNIT | | 0005 80% FEDERAL 20% STATE | 0047 80% FEDERAL 20% STATE |
| | | | | | |
| | | | | | |
| | | | | | |
| | | | | | |
| | | | | | |
| | | | | | |
| | | | | | |
| | | | | | |
| | | | | | |
| | | | | | |
| | | | | | |
| | | | | | |
| | | | | | |
| | | | | | |
| | | | | | |
| | | | | | |
| | | | | | |
| | | | | | |
| | | | | | |
| | | | | | |
| | | | | | |



* SPECIALTY ITEM

REV. 4-6-2020

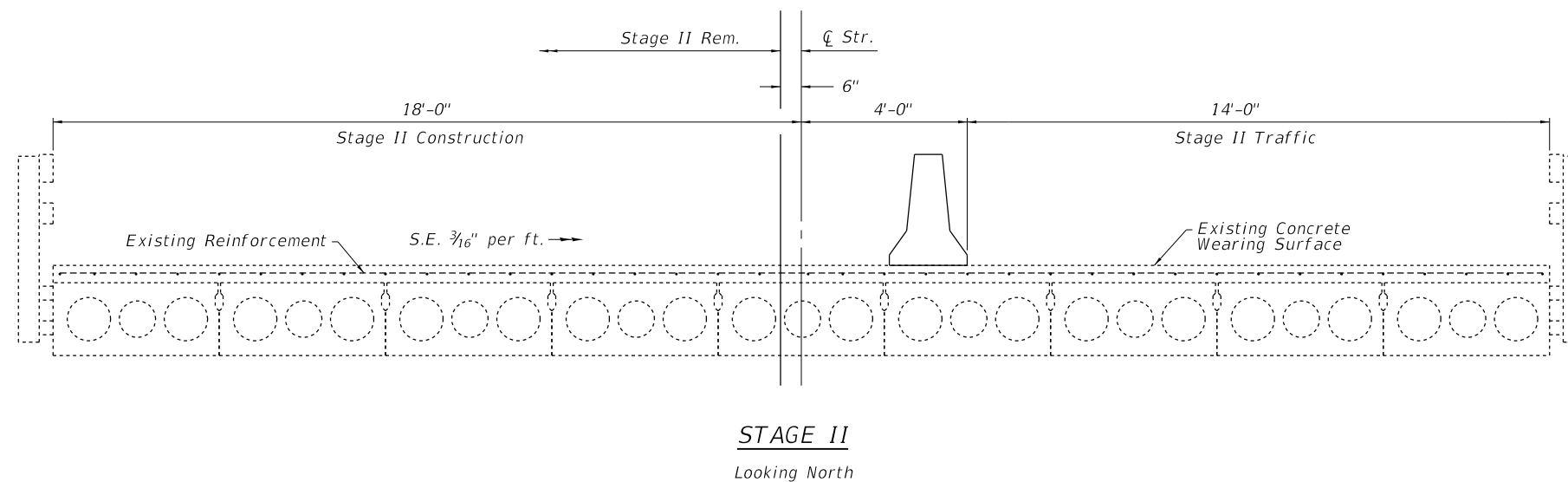
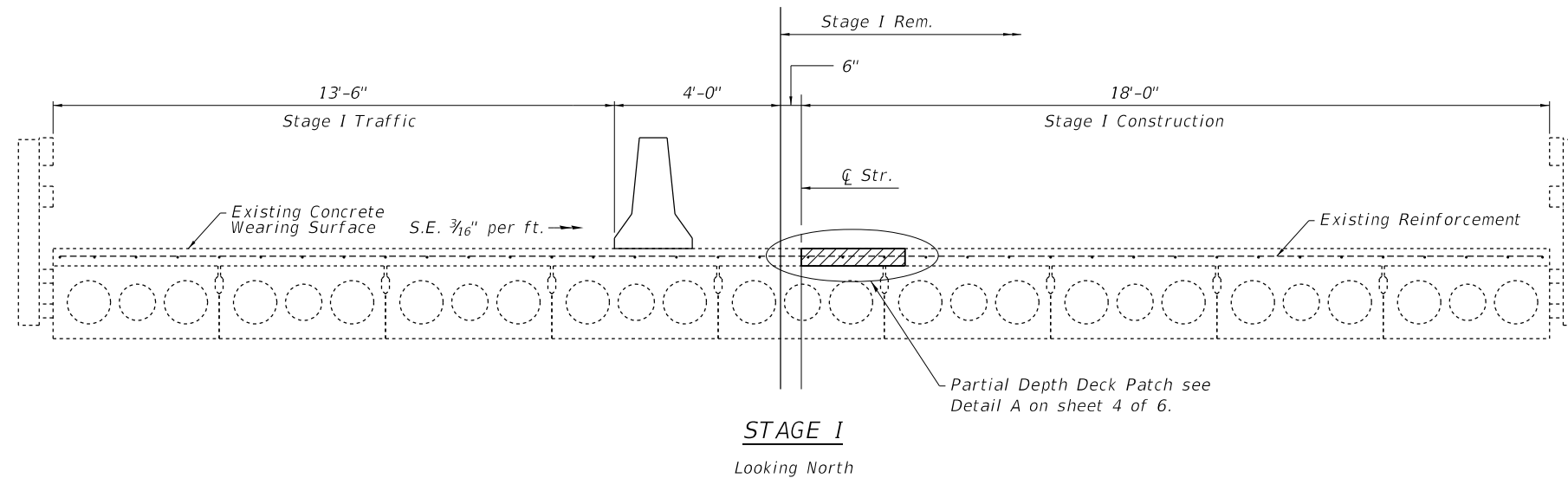
MODEL: Default
 FILE: MainE:pub\lhamrson.dwt:Illinois.spc:PWIDOT\Documents\DOT_Offices\District 7\Projects\74923\CADD\data\CAD\sheets\74923-sht-S006.dgn

| | | |
|------------------------------|------------------|-----------|
| USER NAME = steffenmk | DESIGNED - LMH | REVISED - |
| DRAWN - LMH | CHECKED - | REVISED - |
| PLOT SCALE = 100.0000' / in. | DATE - 1/30/2020 | REVISED - |

STATE OF ILLINOIS
DEPARTMENT OF TRANSPORTATION

| | | | |
|-----------------------|-------|-----------|------|
| SUMMARY OF QUANTITIES | | | |
| SCALE: NO SCALE | SHEET | OF SHEETS | STA. |
| TO STA. | | | |

| | | | | |
|---------------------------|------------------|---------|--------------|-----------|
| F.A.P. RTE. | SECTION | COUNTY | TOTAL SHEETS | SHEET NO. |
| 332 | 6Z,6,5,97-2 R5-2 | EDWARDS | 35 | 6 |
| CONTRACT NO. 74923 | | | | |
| ILLINOIS FED. AID PROJECT | | | | |



GENERAL NOTES

Plan dimensions and details relative to existing plans are subject to nominal construction variations. The Contractor shall field verify existing dimensions and details affecting new construction and make necessary approved adjustments prior to construction or ordering of materials. Such variations shall not be cause for additional compensation for a change in scope of the work, however, the Contractor will be paid for the quantity actually furnished at the unit price bid for the work.

Areas of deck repairs shown are estimated. The Engineer shall show actual locations of deck repairs on as-built plans.

Reinforcement Bars designated (E) shall be epoxy coated.

Existing reinforcement bars extending into the removal area shall be cleaned, straightened and incorporated into the new construction. Any reinforcement bars that are damaged during concrete removal operations shall be replaced with an approved bar splicer or anchorage system. Cost included with CONCRETE REMOVAL.

The contractor shall use extreme care during concrete removal so as not to damage PPC Deck Beams. Any beam damaged shall be repaired or replaced at the contractor's expense.

STRUCTURE BILL OF MATERIAL

| ITEM | UNIT | QUANTITY |
|----------------------------------|---------|----------|
| Concrete Removal | Cu. Yd. | 2.0 |
| Concrete Superstructure | Cu. Yd. | 2.0 |
| Reinforcement Bars, Epoxy Coated | Pound | 260 |
| Bar Splicers | Each | 8 |
| Deck Slab Repair (Partial) | Sq. Yd. | 38 |
| Protective Coat | Sq. Yd. | 14 |

REV. 4-6-2020

MODEL: Default
 FILE: \\nas01c.psu.edu\pub\baronson.d\at\illinois.gov\PROJECTS\DOT\Documents\DOT_Offices\Illinistct_7\Projects\74923\CAAD\Drawings\74923-struct\illinois.dgn

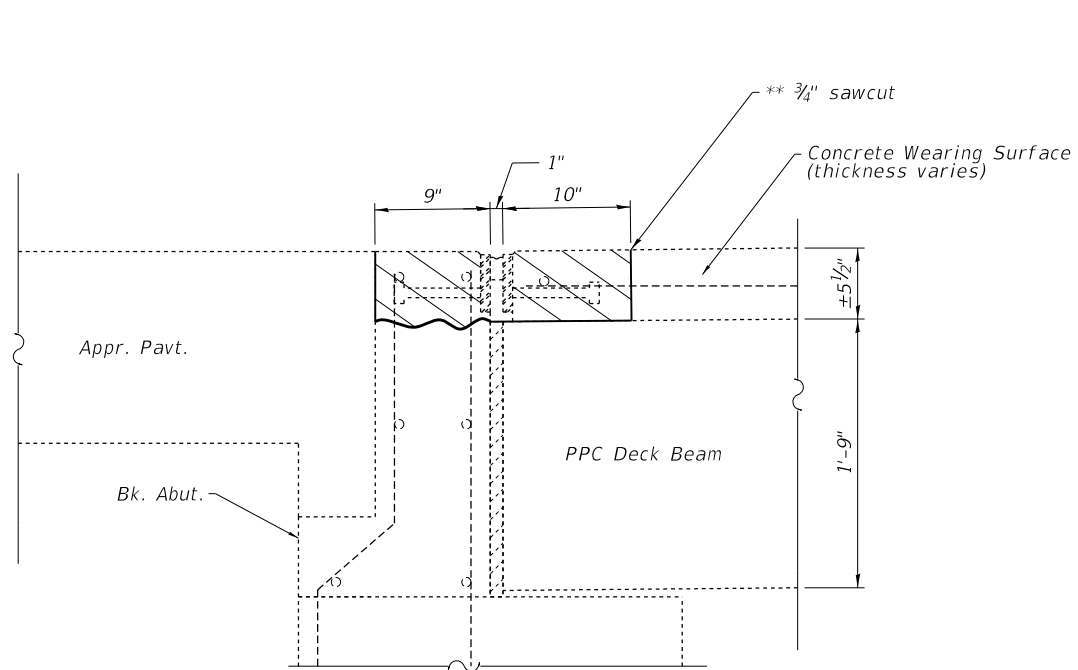
| | | |
|------------------------------|----------------------|------------------------|
| USER NAME = steffemk | DESIGNED - R. Walker | REVISED - VHV - 4/6/20 |
| PLOT SCALE = 100.0000' / in. | DRAWN - R. Walker | REVISED - |
| PLOT DATE = 1/30/2020 | CHECKED - D. Macklin | REVISED - |
| | DATE - 9/16/2019 | REVISED - |

**STATE OF ILLINOIS
DEPARTMENT OF TRANSPORTATION**

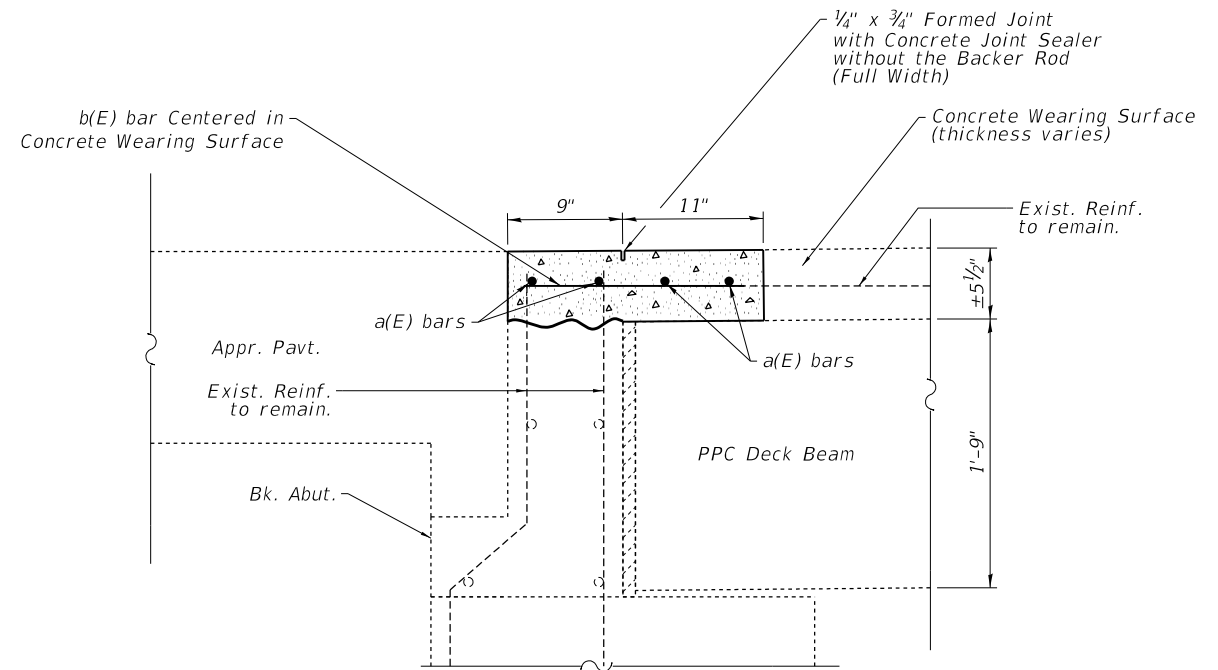
**STAGE CONSTRUCTION, GENERAL NOTES
& BILL OF MATERIAL**

SCALE: SHEET 2 OF 6 SHEETS STA. TO STA.

| | | | | |
|-------------|------------------|---------------------------|--------------------|-----------|
| F.A.P. RTE. | SECTION | COUNTY | TOTAL SHEETS | SHEET NO. |
| 332 | 6Z,6,5,97-2 R5-2 | EDWARDS | 35 | 25 |
| | | | CONTRACT NO. 74923 | |
| | | ILLINOIS FED. AID PROJECT | | |



SECTION A-A



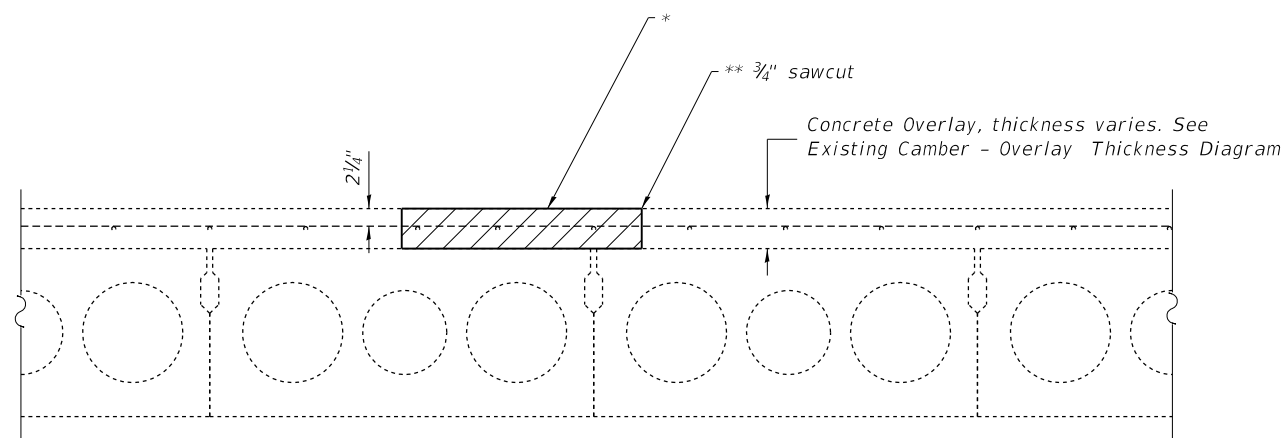
SECTION B-B

Notes:

Hatching indicates concrete removal.

* See sheet 5 of 6 for locations and dimensions.

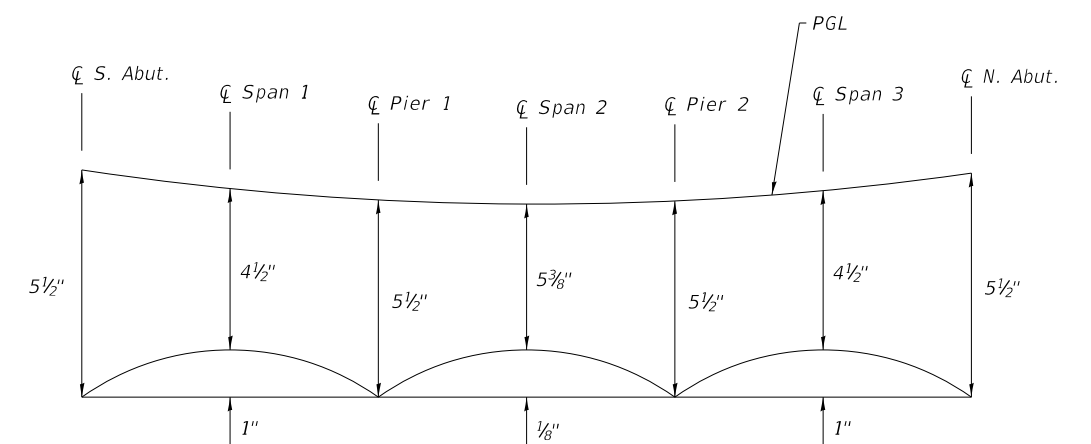
** The contractor shall not sawcut past the corners of the concrete patches. Any cuts extending beyond the corners of the patches shall be filled with Concrete Joint Sealer.



DETAIL A

The above detail is an example of patching the concrete wearing surface. Work will be paid for as Deck Slab Repair (Partial)-(Special). All patches shall be the full depth of the concrete overlay.

1 Contractor must exercise extreme care not to damage existing PPC Deck beam during concrete removal operations. Any damage to the PPC Deck beams must be repaired to the satisfaction of the Engineer at the Contractor's expense.



EXISTING CAMBER - OVERLAY THICKNESS DIAGRAM

Includes Dead Load Deflection of PPC Deck Beams and Concrete Wearing Surface

REV. 4-6-2020

MODEL: Default
FILE: h:\a\c\p\pub\baroncom.dwg\illinois\p\WIDOT\Documents\DOT_Offices\Illin\7\Projects\74923\CADD\DATA\CAD\Sheet\DOT74923-sht-draw.dwg

| | | |
|------------------------------|----------------------|----------------------|
| USER NAME = steffenmk | DESIGNED - R. Walker | REVISED - VHV-4/6/20 |
| | DRAWN - R. Walker | REVISED - |
| PLOT SCALE = 100.0000' / in. | CHECKED - D. Macklin | REVISED - |
| PLOT DATE = 1/30/2020 | DATE - 9/16/2019 | REVISED - |

STATE OF ILLINOIS
DEPARTMENT OF TRANSPORTATION

STRUCTURE REPAIR DETAILS
SN 024-0009

SCALE: SHEET 4 OF 6 SHEETS STA. TO STA.

| F.A.P. RTE. | SECTION | COUNTY | TOTAL SHEETS | SHEET NO. |
|---------------------------|------------------|---------|--------------|-----------|
| 332 | 6Z,6,5,97-2 RS-2 | EDWARDS | 35 | 27 |
| CONTRACT NO. 74923 | | | | |
| ILLINOIS FED. AID PROJECT | | | | |